

AS-BUILT REPAIR QUANTITY TABLE

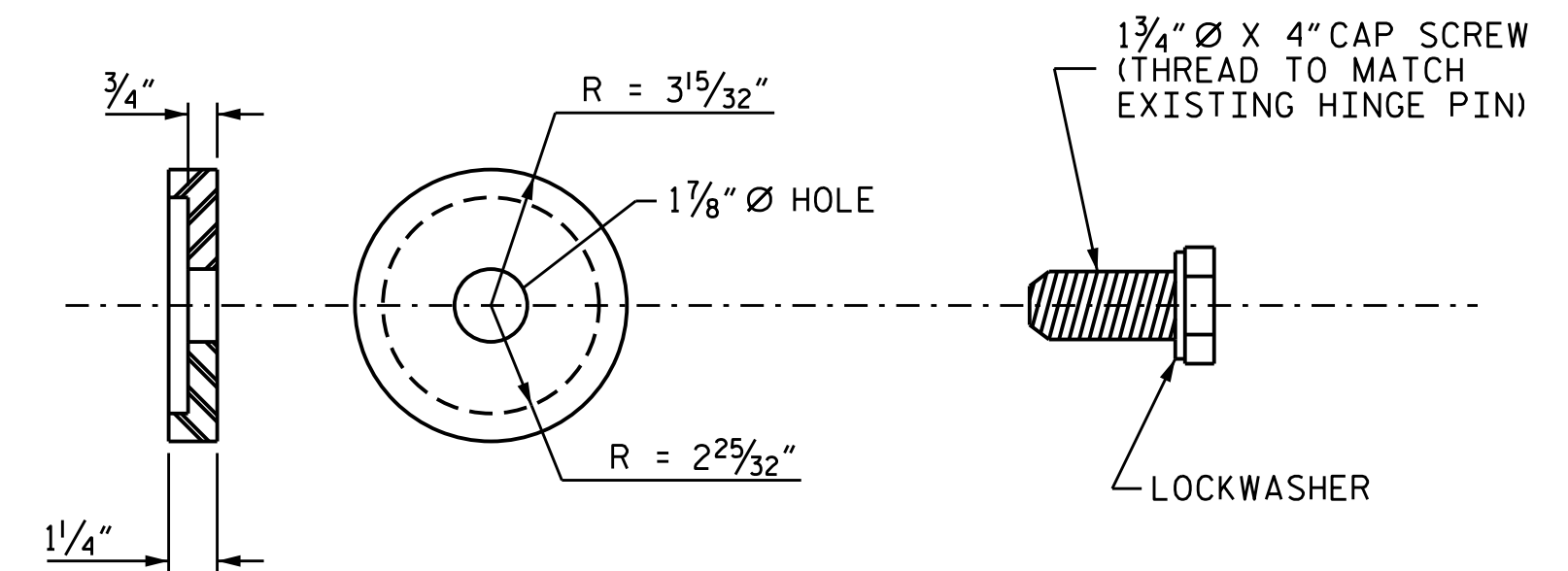
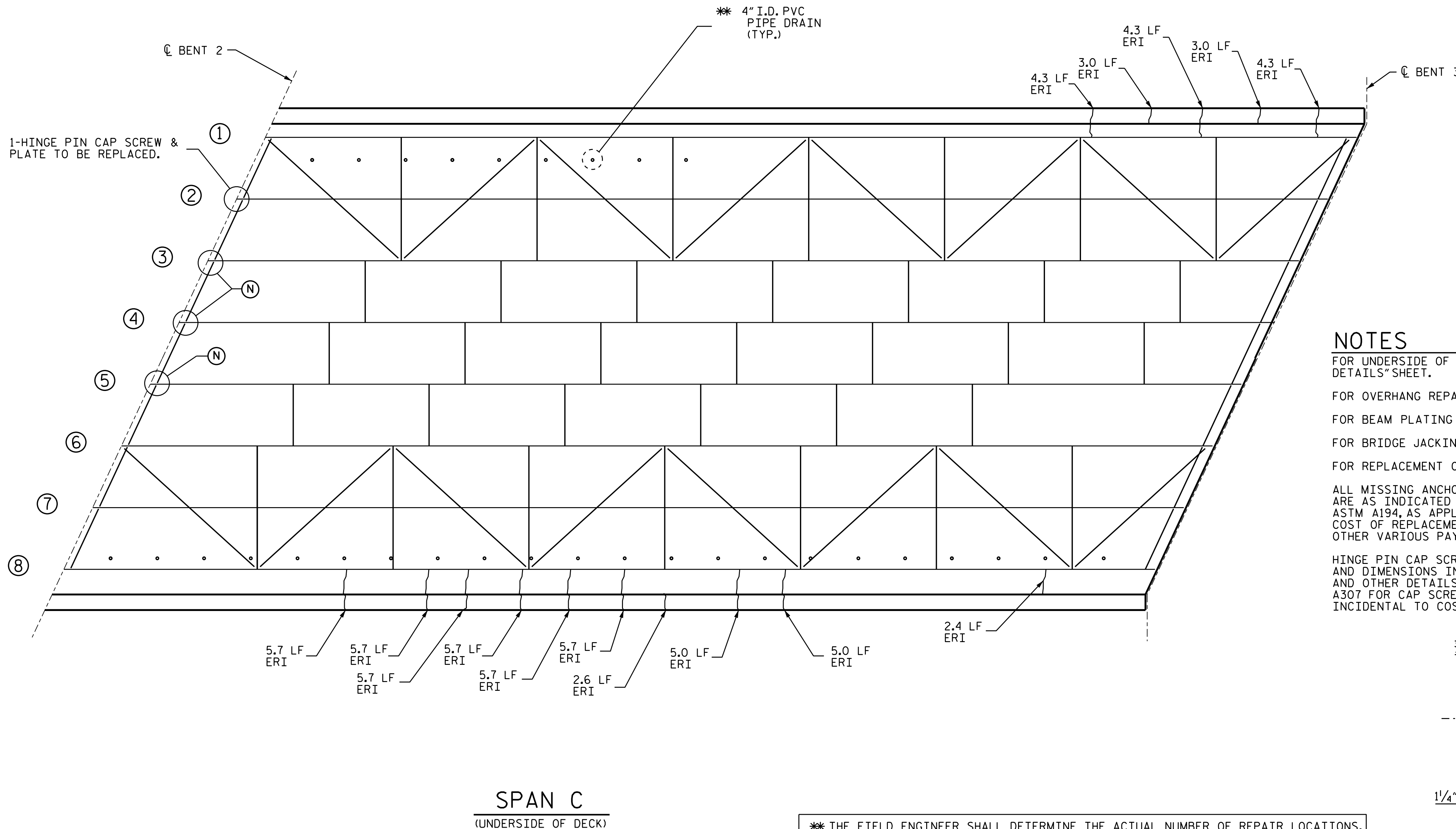
DECK UNDERSIDE REPAIRS - SPAN C

	ESTIMATE		ACTUAL	
	AREA SO. FT.	VOLUME CU. FT.	AREA SO. FT.	VOLUME CU. FT.
<b>SHOTCRETE REPAIRS</b>				
UNDERSIDE OF DECK	12.1	5.0		
CONCRETE DIAPHRAGM OVERHANG	0.0	0.0		
<b>CONCRETE REPAIRS</b>				
UNDERSIDE OF DECK	0.0	0.0		
CONCRETE DIAPHRAGM OVERHANG	0.0	0.0		
<b>EPOXY RESIN INJECTION</b>		LIN. FT.		LIN. FT.
UNDERSIDE OF DECK		0.0		
CONCRETE DIAPHRAGM OVERHANG		68.1		

VALUES IN CHART REPRESENT ESTIMATED REPAIR TOTALS AFTER REMOVAL OF UNSOUND CONCRETE, MINIMUM OF 1" BEHIND REBAR AND MINIMUM 2" CLEARANCE TO SAWCUT, SEE "OVERHANG, DIAPHRAGM AND BRIDGE RAIL REPAIR DETAILS" SHEET.

NOTES

- FOR UNDERSIDE OF DECK REPAIRS, SEE "OVERHANG, DIAPHRAGM AND BRIDGE RAIL REPAIR DETAILS" SHEET.
- FOR OVERHANG REPAIRS, SEE "OVERHANG, DIAPHRAGM AND BRIDGE RAIL REPAIR DETAILS" SHEET.
- FOR BEAM PLATING REPAIR, SEE "BEAM PLATING REPAIR DETAILS" SHEETS.
- FOR BRIDGE JACKING, SEE "JACKING DETAILS" SHEET.
- FOR REPLACEMENT OF HINGE PIN CAP SCREW AND WASHER, SEE SPECIAL PROVISIONS.
- ALL MISSING ANCHOR BOLT NUTS SHALL BE REPLACED. ANTICIPATED LOCATIONS AND QUANTITIES ARE AS INDICATED ON PLAN SHEETS. THE CONTRACTOR SHALL FIELD VERIFY. NUTS SHALL BE ASTM A194, AS APPLICABLE, OR ASTM A563 AND SIZE AND THREADS SHALL MATCH EXISTING. COST OF REPLACEMENT OF ANCHOR BOLT NUTS SHALL BE CONSIDERED INCIDENTAL TO COST OF OTHER VARIOUS PAY ITEMS.
- HINGE PIN CAP SCREW AND PLATE SHALL BE FABRICATED OR SUPPLIED TO MEET THE GEOMETRY AND DIMENSIONS INDICATED. THE CONTRACTOR SHALL FIELD VERIFY DIMENSIONS AND GEOMETRIES AND OTHER DETAILS. MATERIAL SHALL BE MINIMUM GRADE A36 STEEL FOR PLATE AND ASTM A307 FOR CAP SCREW. COST OF HINGE PIN CAP SCREW AND PLATE SHALL BE CONSIDERED INCIDENTAL TO COST OF OTHER VARIOUS PAY ITEMS.



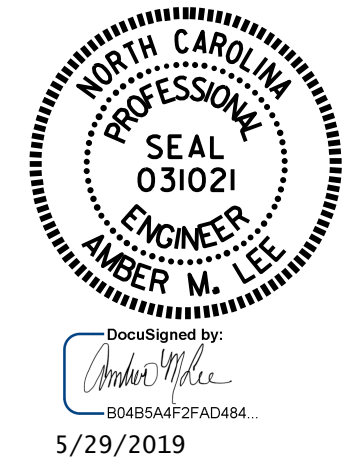
\* THE FIELD ENGINEER SHALL DETERMINE THE ACTUAL NUMBER OF REPAIR LOCATIONS. IF LOCATIONS NOTED DURING FIELD EVALUATION, ESTIMATE QUANTITY, 1.1 CF OF SHOTCRETE EACH LOCATION ADDED TO "UNDERSIDE OF DECK" IN QUANTITY TABLE.

SPAN C  
(UNDERSIDE OF DECK)

STEEL PLATES		STIFFENER		STEEL DIAPHRAGM		BRIDGE JACKING		ANCHOR BOLT NUT	
LBS.		LBS.		LBS.		EA.		EA.	
ESTIMATE	ACTUAL	ESTIMATE	ACTUAL	ESTIMATE	ACTUAL	ESTIMATE	ACTUAL	ESTIMATE	ACTUAL
0.0		0.0		0.0		0		4	

SPAN	BEAM	LOCATION	DIM "A"	DIM "B"	DIM "E"	DIM "F"

- SHOTCRETE REPAIR AREA
- ERI - EPOXY RESIN INJECTION
- (1) BEAM NUMBER
- (2) BEAM END REPAIR
- (P) PLATING REPAIR
- (S) STIFFENER REPAIR
- (C) CONNECTOR PLATE REPAIR
- (D) STEEL CROSSFRAME REPLACEMENT HORIZONTAL ST4 WF8.5
- (F) BOTTOM FLANGE REPAIR
- (N) ANCHOR BOLT NUT REPLACEMENT
- (K) STEEL ANGLE KEEPER ASSEMBLY



PROJECT NO. 15BPR.40  
BUNCOMBE COUNTY  
BRIDGE NO. 100705

SHEET 3 OF 7

STATE OF NORTH CAROLINA  
DEPARTMENT OF TRANSPORTATION  
RALEIGH

DECK UNDERSIDE REPAIRS  
SPAN C

REVISIONS						SHEET NO.
NO.	BY:	DATE:	NO.	BY:	DATE:	
1			3			S3-15
2			4			TOTAL SHEETS 36

DOCUMENT NOT CONSIDERED FINAL UNLESS ALL SIGNATURES COMPLETED

DRAWN BY : C.L. BRIGHT DATE : 01/2019  
CHECKED BY : A.M. LEE DATE : 03/2019