

NOTES

THE FOAM JOINTS SHALL MEET THE MANUFACTURER'S RECOMMENDATION.

THE UNCOMPRESSED FOAM JOINT SEAL WIDTH SHALL MEET THE MANUFACTURER'S RECOMMENDATION FOR THE SIZE OF OPENING ON THE PLANS, AND ACCOMMODATE THE MINIMUM EXPANSION SHOWN ON THE PLANS.

CONTRACTOR SHALL FIELD VERIFY THE EXISTING JOINT OPENING PRIOR TO ORDERING JOINT SEAL MATERIAL. IF ACTUAL JOINT OPENING VARIES FROM OPENING INDICATED IN DETAIL BY MORE THAN 1/4", NOTIFY ENGINEER.

THE INSTALLED FOAM JOINTS SHALL BE WATER TIGHT.

FOR FOAM JOINT SEALS FOR PRESERVATION, SEE SPECIAL PROVISIONS.

THE CONTRACTOR WILL NOT BE PERMITTED TO FORM THE JOINTS IN LIEU OF SAWING THE JOINT.

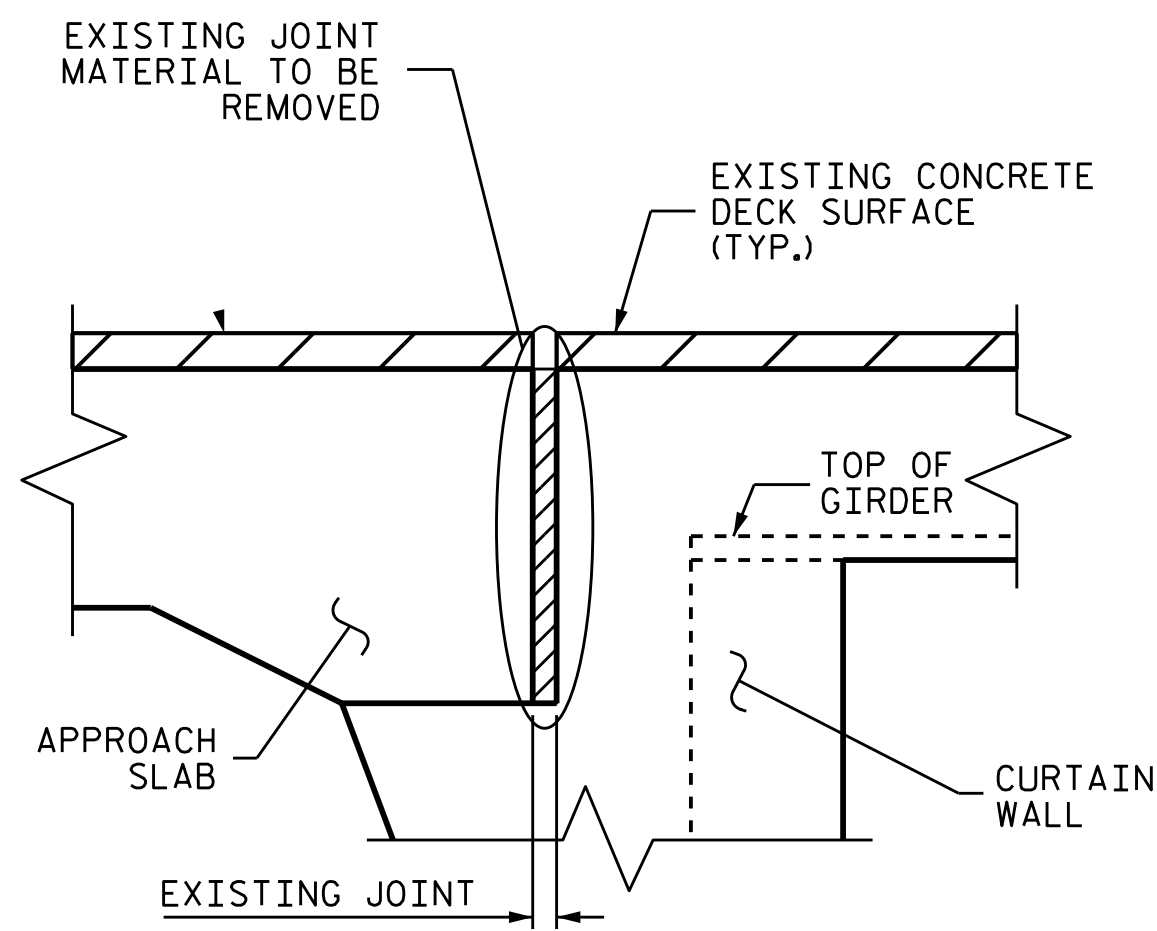
FOR POURABLE SILICONE JOINT SEALANT, SEE SPECIAL PROVISIONS.

CONTRACTOR SHALL FIELD VERIFY THE EXISTING JOINT OPENING PRIOR TO ORDERING THE BACKER ROD.

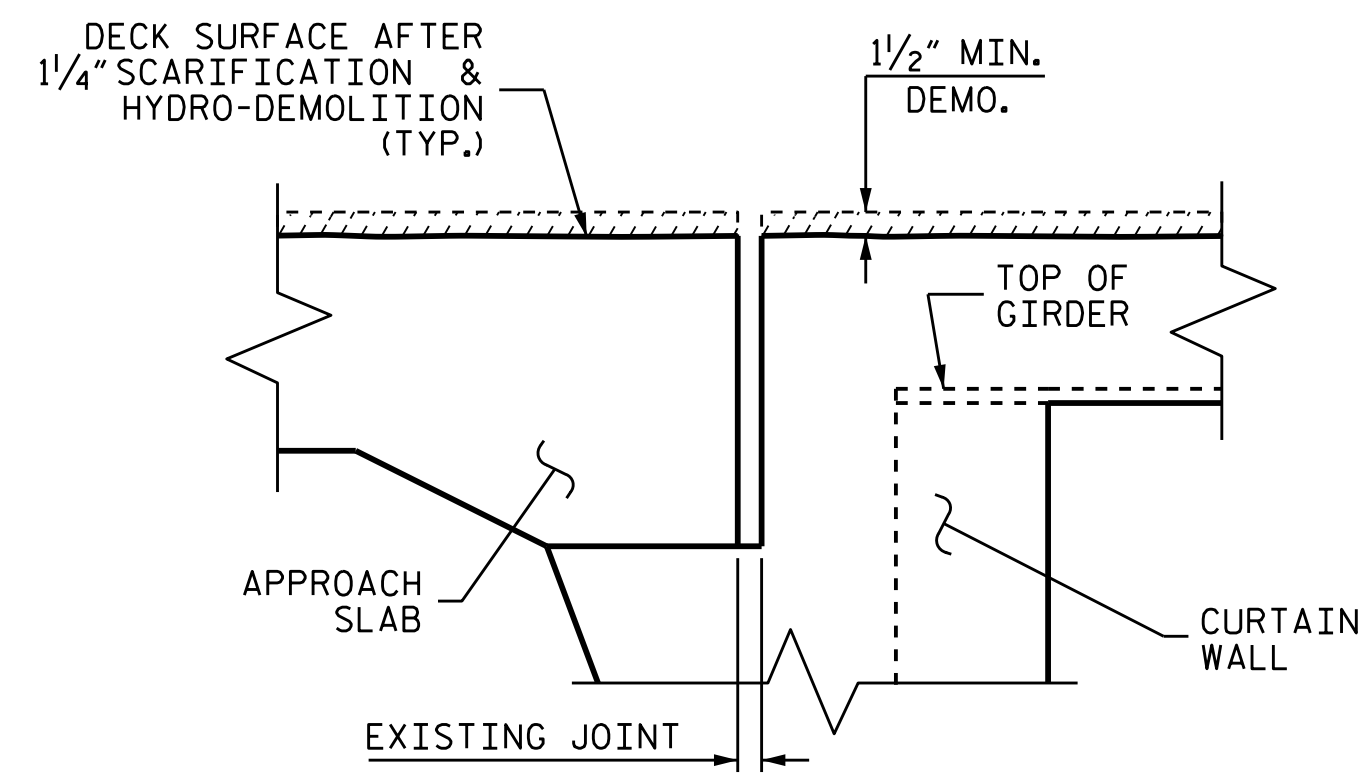
THE BACKER ROD SHALL MEET THE MANUFACTURER'S RECOMMENDATION FOR THE SIZE OF THE JOINT OPENING.

SAWED JOINT OPENING TABLE

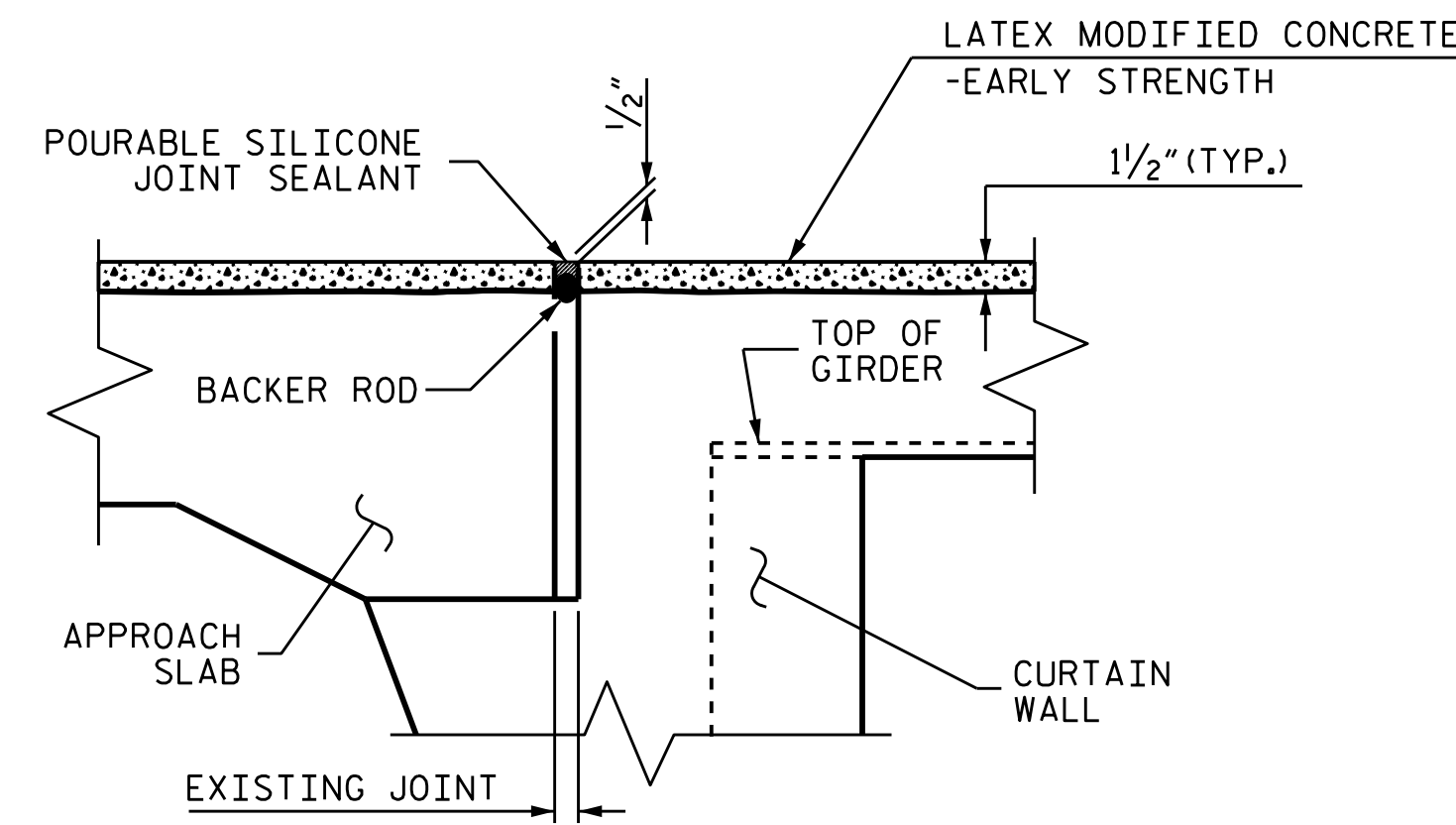
LOCATION	SAWED JT. OPENING (PERPENDICULAR TO JT.)		
	AT 45°	AT 60°	AT 90°
BENT 1	2 1/2"	2 5/8"	1 5/8"
BENT 2	1 5/8"	1 3/4"	1 1/8"



SECTION A-A
(EXISTING JOINT)



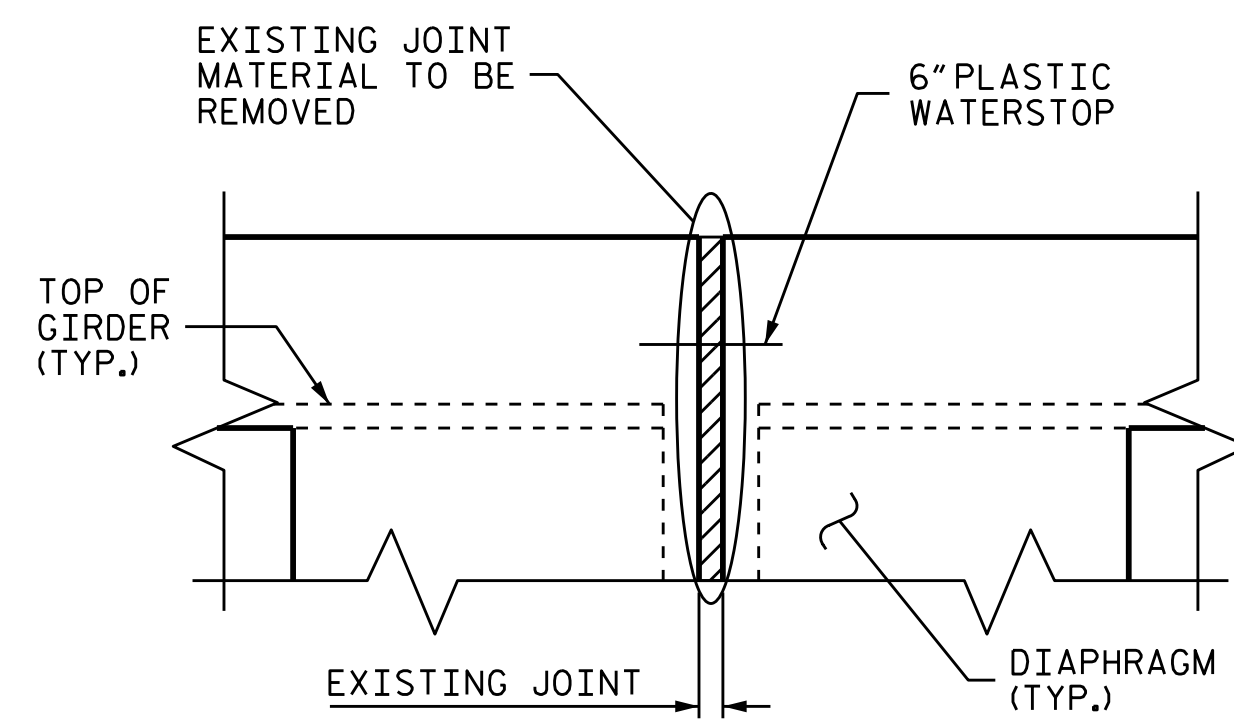
SECTION A-A
(MINIMUM EXISTING JOINT DEMOLITION)



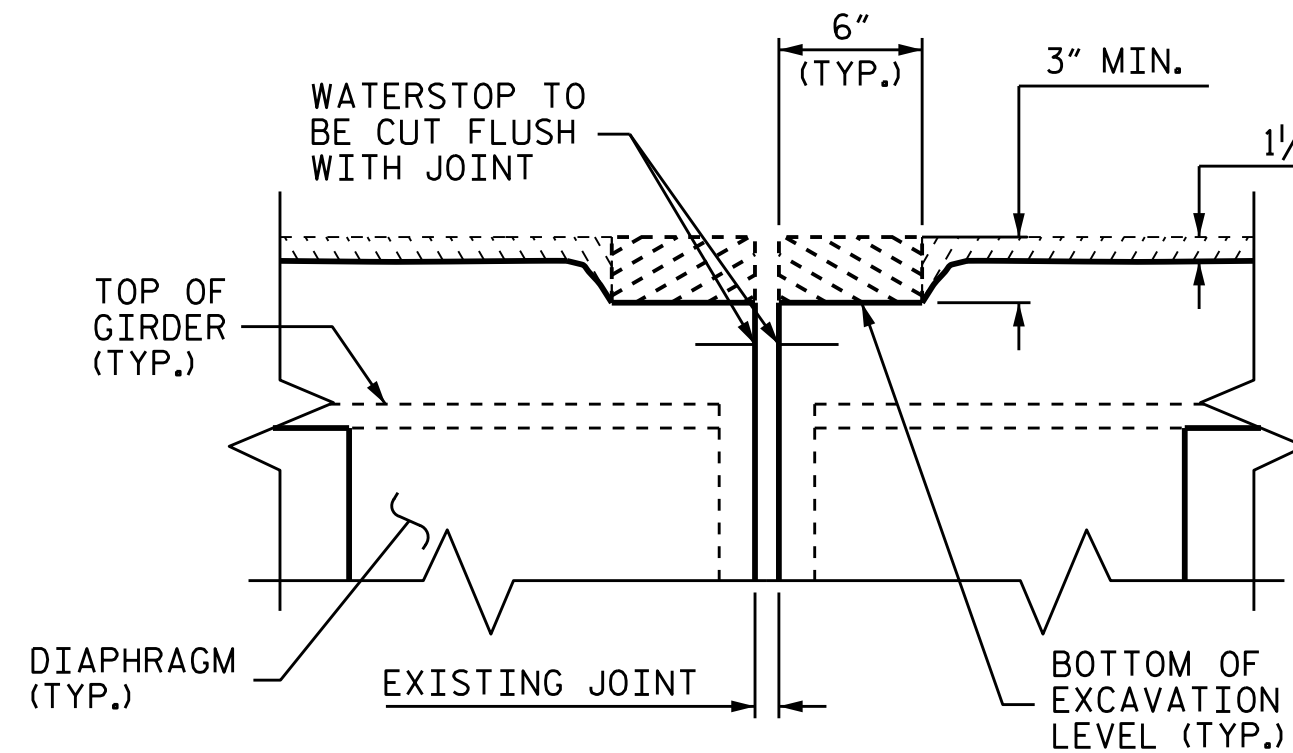
SECTION A-A
(PROPOSED JOINT)

IF THE EMBEDDED PORTION OF THE EXISTING PLASTIC WATERSTOP IS EXPOSED DURING REMOVAL OF UNSOUND CONCRETE, OR IF UNSOUND CONCRETE IS REMOVED WITHIN 2" OF THE WATERSTOP, THE ENTIRE CONCRETE DEPTH TO THE WATERSTOP SHALL BE REMOVED. IF SUCH EXCAVATION EXTENDS MORE THAN 2" BELOW THE BOTTOM OF THE PLANNED ELASTOMERIC CONCRETE HEADER, AS SHOWN, APPROVED REPAIR CONCRETE SHALL BE PLACED IN THE EXCAVATED AREA TO THE ELEVATION AT THE BOTTOM OF THE ELASTOMERIC CONCRETE.

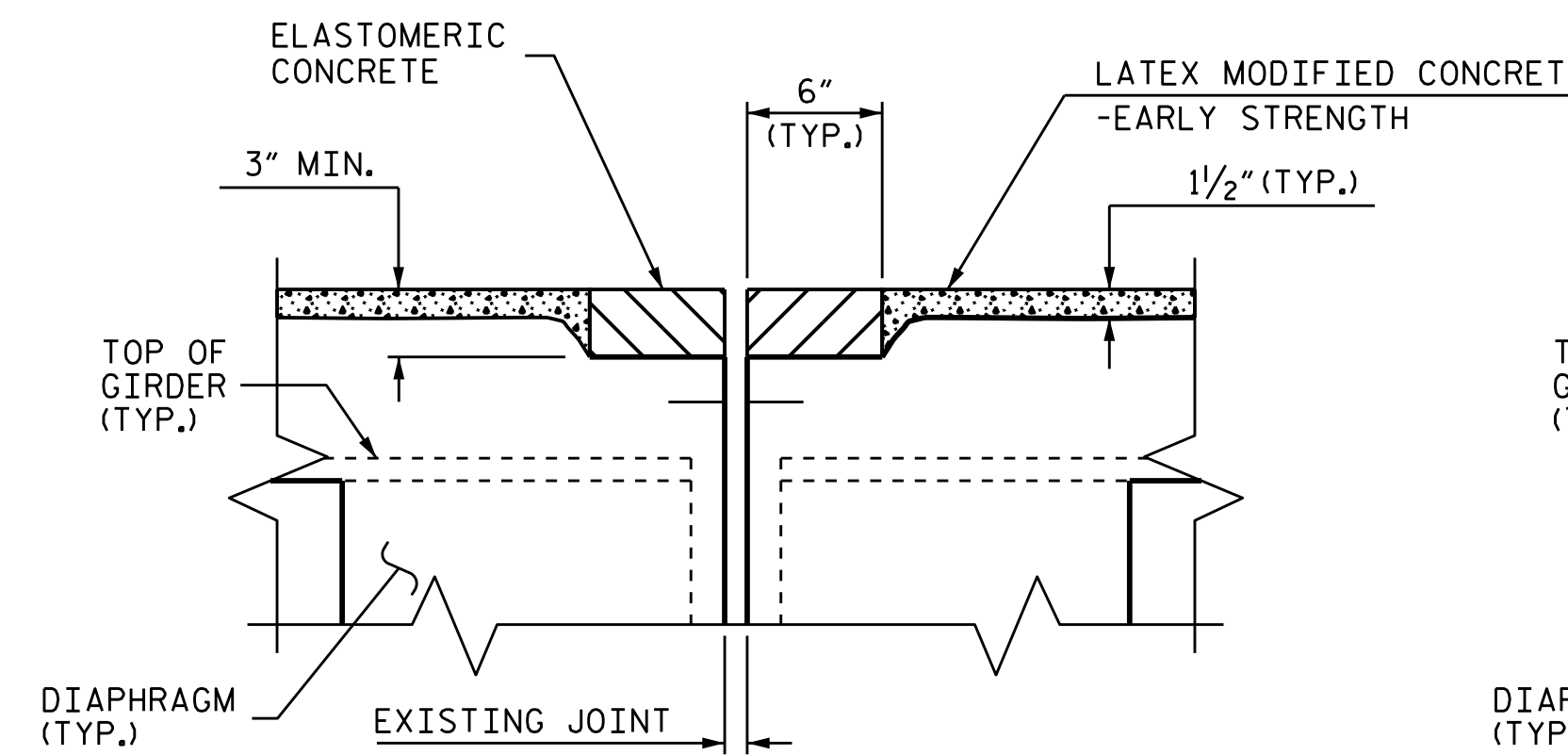
DEMOLISH BRIDGE JOINT AREA TO THE NECESSARY DEPTH, SUCH THAT ELASTOMERIC CONCRETE SHALL BE FOUNDED ON CONCRETE OR REPAIR CONCRETE SUBSTRATE, NOT LATEX MODIFIED CONCRETE.



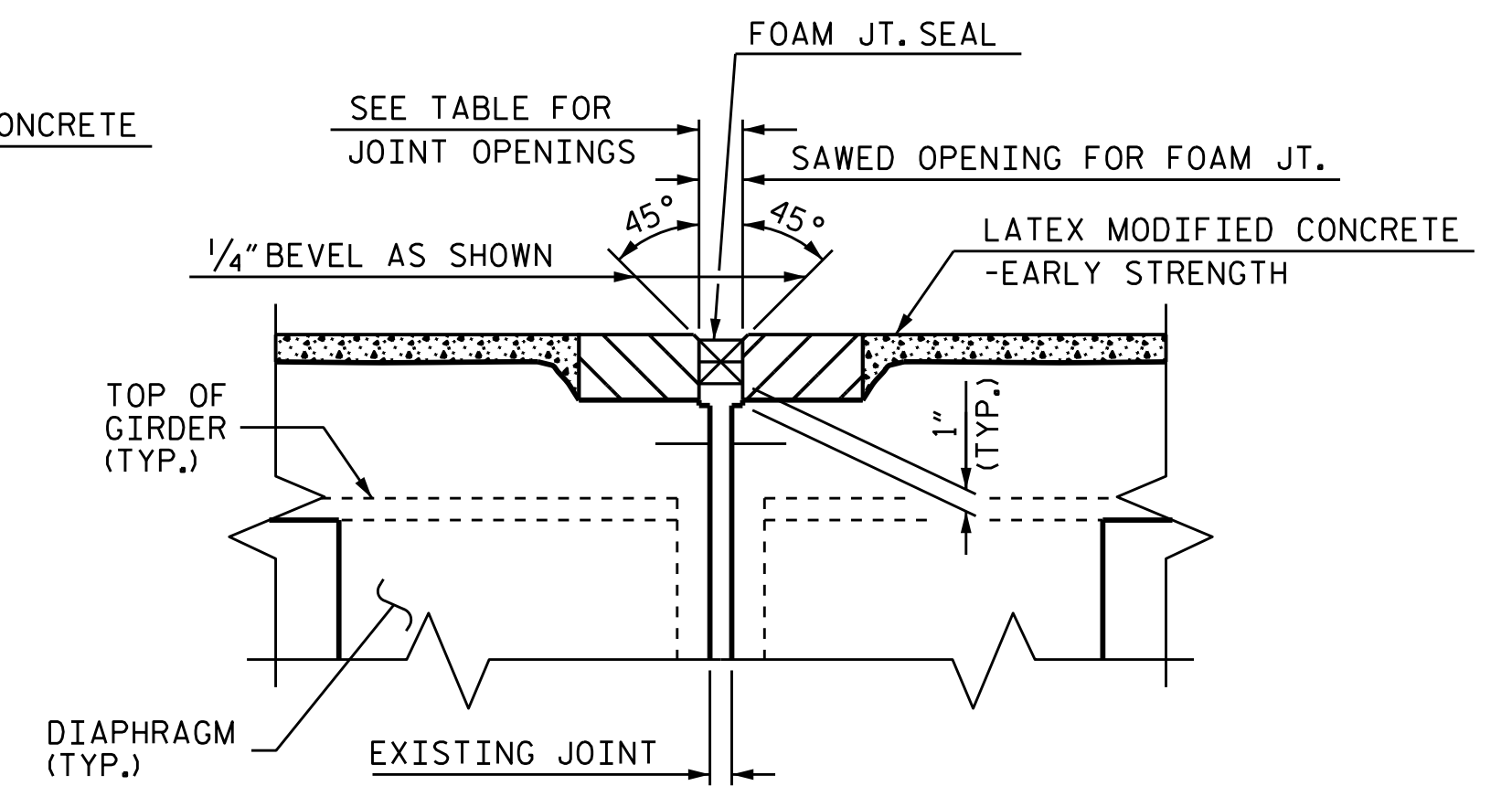
SECTION B-B
(EXISTING JOINT)



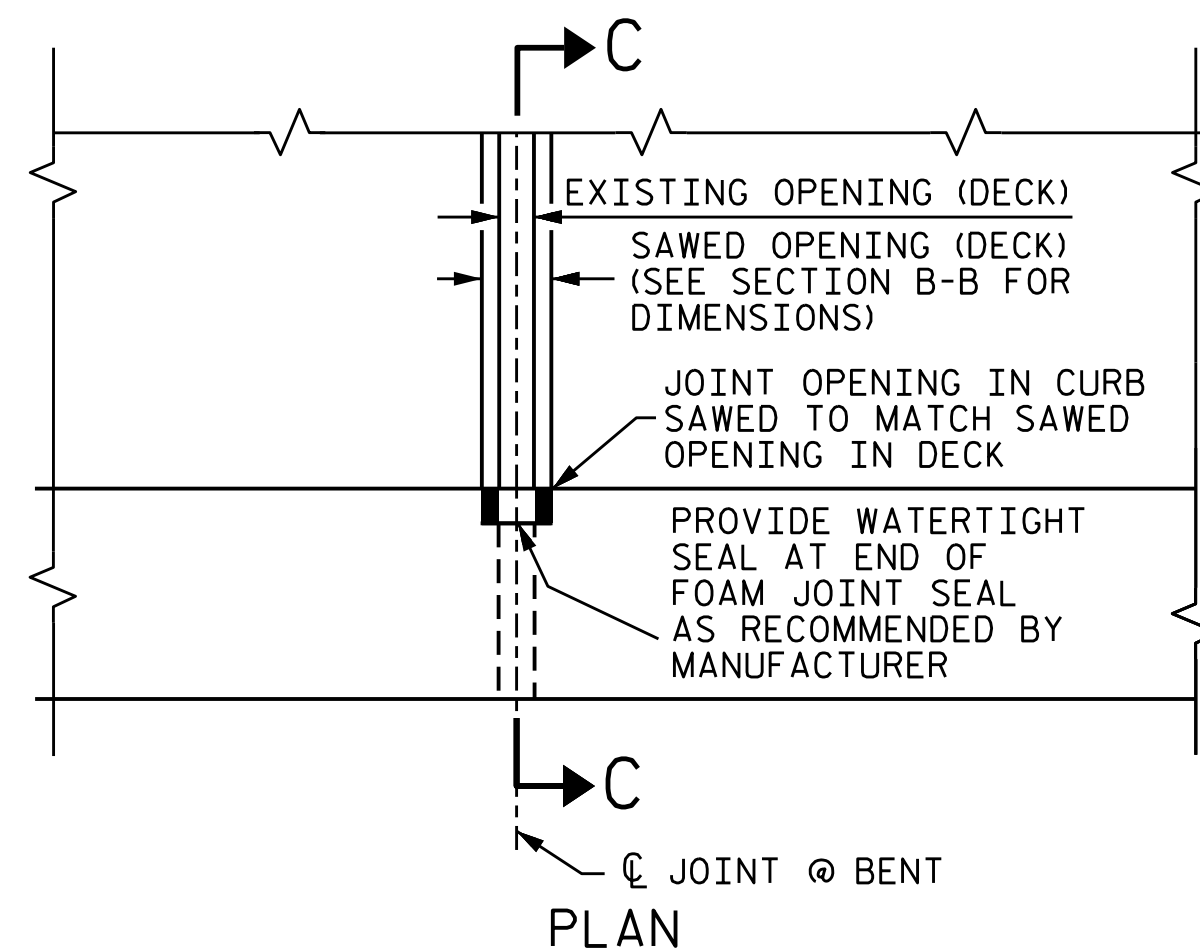
SECTION B-B
(MINIMUM EXISTING JOINT DEMOLITION)



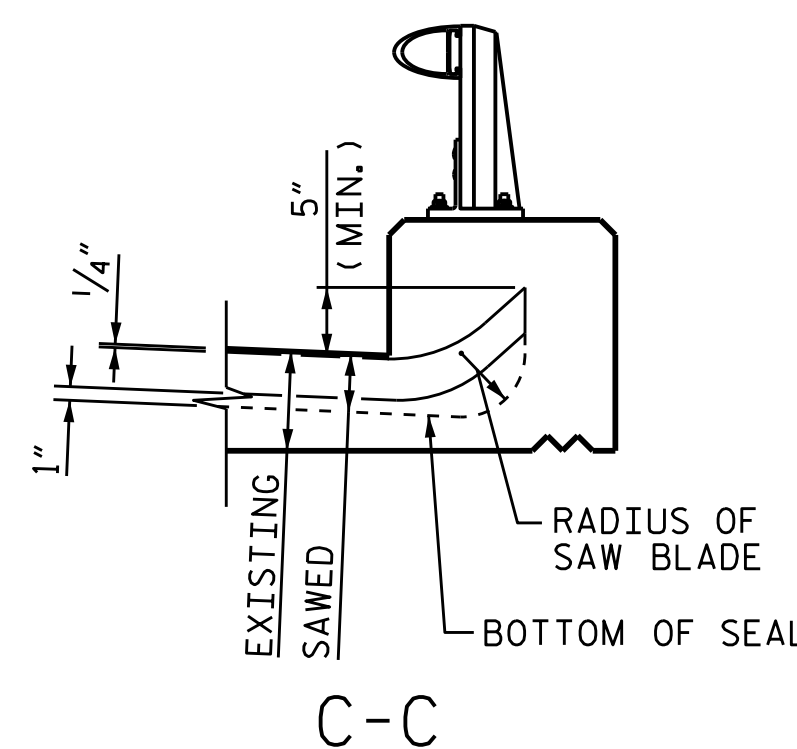
SECTION B-B
(PROPOSED JOINT PRE-SAWED)



SECTION B-B
(PROPOSED FOAM JOINT SEAL)



JOINT SEAL DETAILS



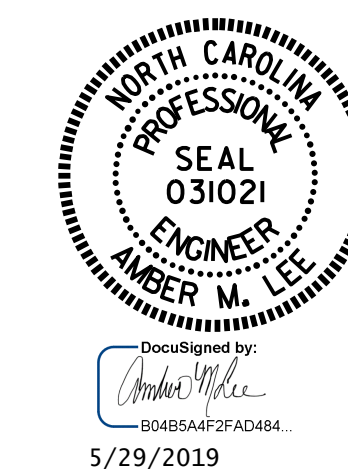
FOAM JOINT SEAL SHALL BE FACTORY FORMED OR CUT, HEAT WELDED AND TURNED UP PARALLEL TO FACE OF CURB.

ELASTOMERIC CONCRETE FOR PRESERVATION

LOCATION	ESTIMATED CU.FT.	ACTUAL CU.FT.
BENT 1	17.0	
BENT 2	17.0	
TOTAL	34.0	

JOINT REPAIR QUANTITY TABLE

	ESTIMATED LIN. FT.	ACTUAL LIN. FT.
FOAM JOINT SEALS FOR PRESERVATION	136.0	
POURABLE SILICONE JOINT SEALANT	156.0	



PROJECT NO. 15BPR.40
BUNCOMBE COUNTY
BRIDGE NO. 100495

STATE OF NORTH CAROLINA
DEPARTMENT OF TRANSPORTATION
RALEIGH

JOINT DETAILS

DRAWN BY: R.L. PUTEK DATE: 01/2019
CHECKED BY: AMBER LEE DATE: 01/2019

DOCUMENT NOT CONSIDERED FINAL UNLESS ALL SIGNATURES COMPLETED

REVISIONS						SHEET NO.
NO.	BY:	DATE:	NO.	BY:	DATE:	
1			3			S2-08
2			4			TOTAL SHEETS 14