



LOCATION SKETCH

INFORMATION INDICATED ON THE LOCATION SKETCH SHALL BE CONSIDERED GENERAL INFORMATION ONLY. THE CONTRACTOR SHALL CONFIRM, THROUGH OTHER SOURCES, SPECIFIC INFORMATION REGARDING BRIDGES, ROADWAYS, UTILITIES, THE SURROUNDING AREA, AND ANY OTHER ASPECTS THAT MAY BE NECESSARY TO PERFORM AND COMPLETE THE PROJECT.

BRIDGE COORDINATES

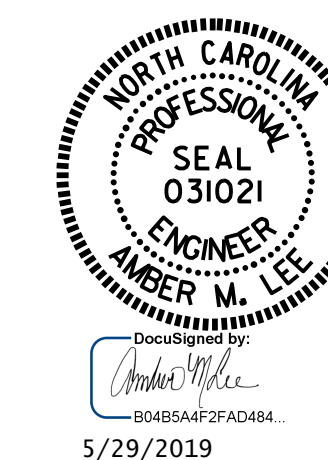
LAT: 35.619149
LONG: -82.287097

NOTES

- EXISTING DIMENSIONS AND BRIDGE CONDITION ARE FROM THE BEST INFORMATION AVAILABLE.
- THE CONTRACTOR SHALL FIELD VERIFY THE INFORMATION SHOWN ON THE PLANS AND NOTIFY THE ENGINEER IF ACTUAL DIMENSIONS AND CONDITIONS DIFFER.
- THE CONTRACTOR SHALL HAVE NO CLAIM WHATSOEVER AGAINST THE DEPARTMENT OF TRANSPORTATION FOR ANY DELAYS OR ADDITIONAL COST INCURRED BASED ON DIFFERENCES BETWEEN THAT SHOWN ON THE PLANS AND THE ACTUAL CONDITIONS AT THE PROJECT SITE.
- IT IS THE CONTRACTOR'S RESPONSIBILITY TO FOLLOW ALL STATE AND FEDERAL SAFETY REQUIREMENTS.
- WORK ON THE BRIDGES SHALL BE PERFORMED SO AS NOT TO ALLOW DEBRIS TO FALL BELOW. THE CONTRACTOR SHALL SUBMIT PLANS FOR CONSTRUCTION IN ACCORDANCE WITH ARTICLE 402-2 OF THE STANDARD SPECIFICATIONS AND THE PROJECT SPECIAL PROVISIONS.
- ANY DAMAGE TO EXISTING REINFORCING STEEL, DURING CONTRACTOR'S OPERATIONS, SHALL BE REPAIRED AS DIRECTED BY THE ENGINEER AND PERFORMED AT NO ADDITIONAL COST TO THE DEPARTMENT.
- PRIOR TO BEGINNING WORK, THE CONTRACTOR SHALL SUBMIT FOR REVIEW AND APPROVAL A COMPLETE SEQUENCE OF TASK FOR EACH OPERATION AFFECTING THE BRIDGE SURFACE AND/OR TRAFFIC.
- FOR SUBMITTAL OF WORKING DRAWINGS, SEE SPECIAL PROVISIONS.
- FOR FALSEWORK AND FORMWORK, SEE SPECIAL PROVISIONS.
- FOR CRANE SAFETY, SEE SPECIAL PROVISIONS.
- FOR GROUT FOR STRUCTURES, SEE SPECIAL PROVISIONS.
- FOR TRAFFIC CONTROL AND LIMITS OF PHASING OF CONSTRUCTION, SEE TRANSPORTATION MANAGEMENT PLANS.
- EXISTING JOINTS AND DECK DRAINS SHALL BE SEALED PRIOR TO BEGINNING SURFACE PREPARATION OF BRIDGE DECK.
- FOR SCARIFYING BRIDGE DECK, HYDRO-DEMOLITION OF BRIDGE DECK, AND CLASS II SURFACE PREPARATION, SEE OVERLAY SURFACE PREPARATION SPECIAL PROVISION.
- THE LMC CONTRACTOR SHALL PROVIDE A METHOD OF HANDLING UNEXPECTED BLOW THROUGH OF THE DECK DURING HYDRO-DEMOLITION.
- FOR PLACING AND FINISHING LATEX MODIFIED CONCRETE OVERLAY-EARLY STRENGTH (LMC-ES) AND LATEX MODIFIED CONCRETE-EARLY STRENGTH, SEE LATEX MODIFIED CONCRETE-EARLY STRENGTH SPECIAL PROVISIONS.
- LONGITUDINAL CONSTRUCTION JOINTS SHALL BE LOCATED ALONG THE CENTERLINE OR EDGE OF TRAVEL LANES.
- DURING CONSTRUCTION, BERMS OR APPROPRIATE MEASURES SHALL BE USED TO ENSURE HYDRO-DEMOLITION WATER DOES NOT MIGRATE INTO ACTIVE TRAVEL LANES.
- THE CONTRACTOR SHALL COLLECT, TREAT AND DISPOSE OF RUN-OFF WATER FROM THE HYDRO-DEMOLITION PROCESS, SEE OVERLAY SURFACE PREPARATION SPECIAL PROVISIONS.
- FOR BRIDGE JOINT DEMOLITION, SEE SPECIAL PROVISIONS.
- FOR CONCRETE FOR DECK REPAIRS, SEE SPECIAL PROVISIONS.
- FOR FOAM JOINT SEAL FOR PRESERVATION, SEE SPECIAL PROVISIONS.
- FOR EPOXY RESIN INJECTION, SEE SPECIAL PROVISIONS.
- FOR SHOTCRETE REPAIRS, SEE SPECIAL PROVISIONS.
- FOR CONCRETE REPAIRS, SEE SPECIAL PROVISIONS.
- FOR PAINTING EXISTING WEATHERING STEEL STRUCTURE, AREAS SPECIAL PROVISIONS.
- FOR PAINTING CONTAINMENT, POLLUTION CONTROL, AND CLEANING AND PAINTING EXISTING WEATHERING STEEL, SEE PAINTING EXISTING WEATHERING STEEL STRUCTURE SPECIAL PROVISIONS.
- FOR EPOXY COATING AND DEBRIS REMOVAL, SEE SPECIAL PROVISIONS.
- FOR BEAM REPAIR, SEE SPECIAL PROVISIONS.
- FOR BOLTED BEAM REPAIR, SEE SPECIAL PROVISIONS.
- FOR VOLUMETRIC MIXER, SEE SPECIAL PROVISIONS.
- FOR POURABLE SILICONE JOINT SEALANT, SEE SPECIAL PROVISIONS.
- FOR ELASTOMERIC CONCRETE FOR PRESERVATION, SEE SPECIAL PROVISIONS.
- FOR BRIDGE JACKING, SEE SPECIAL PROVISIONS.

PROJ. NO. 15BPR.40
BUNCOMBE COUNTY
 BRIDGE NO. 100495

SHEET 2 OF 2



STATE OF NORTH CAROLINA
 DEPARTMENT OF TRANSPORTATION
 RALEIGH
GENERAL DRAWING
 FOR BRIDGE ON
 SR 2531 (DUNSMORE AVENUE)
 OVER
 INTERSTATE 40

DRAWN BY : R.L.PUTEK DATE : 07/18
 CHECKED BY : A.M.LEE DATE : 08/18

DOCUMENT NOT CONSIDERED
 FINAL UNLESS ALL
 SIGNATURES COMPLETED

REVISIONS						SHEET NO.
NO.	BY:	DATE:	NO.	BY:	DATE:	S2-02
1			3			TOTAL SHEETS
2			4			14