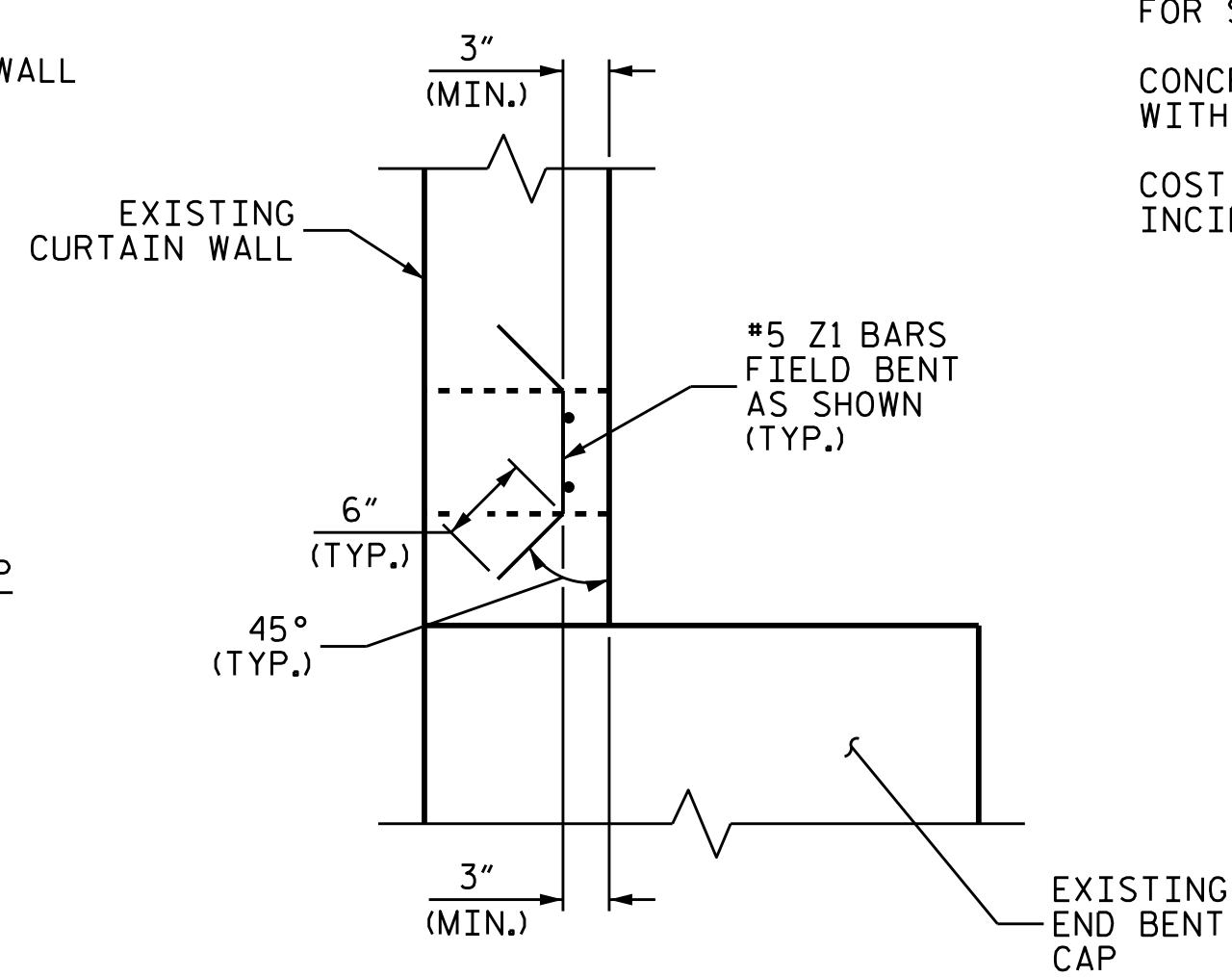
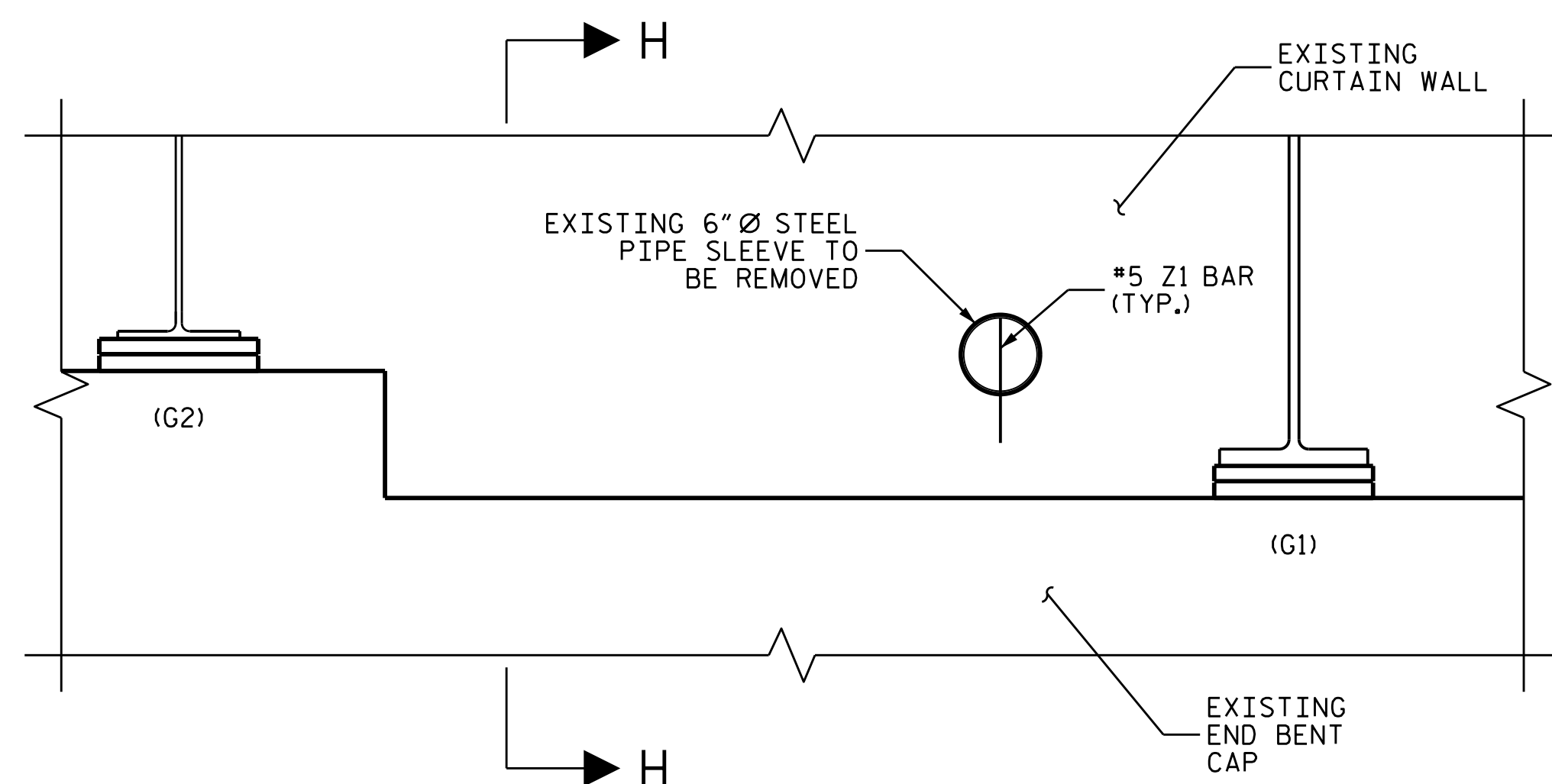


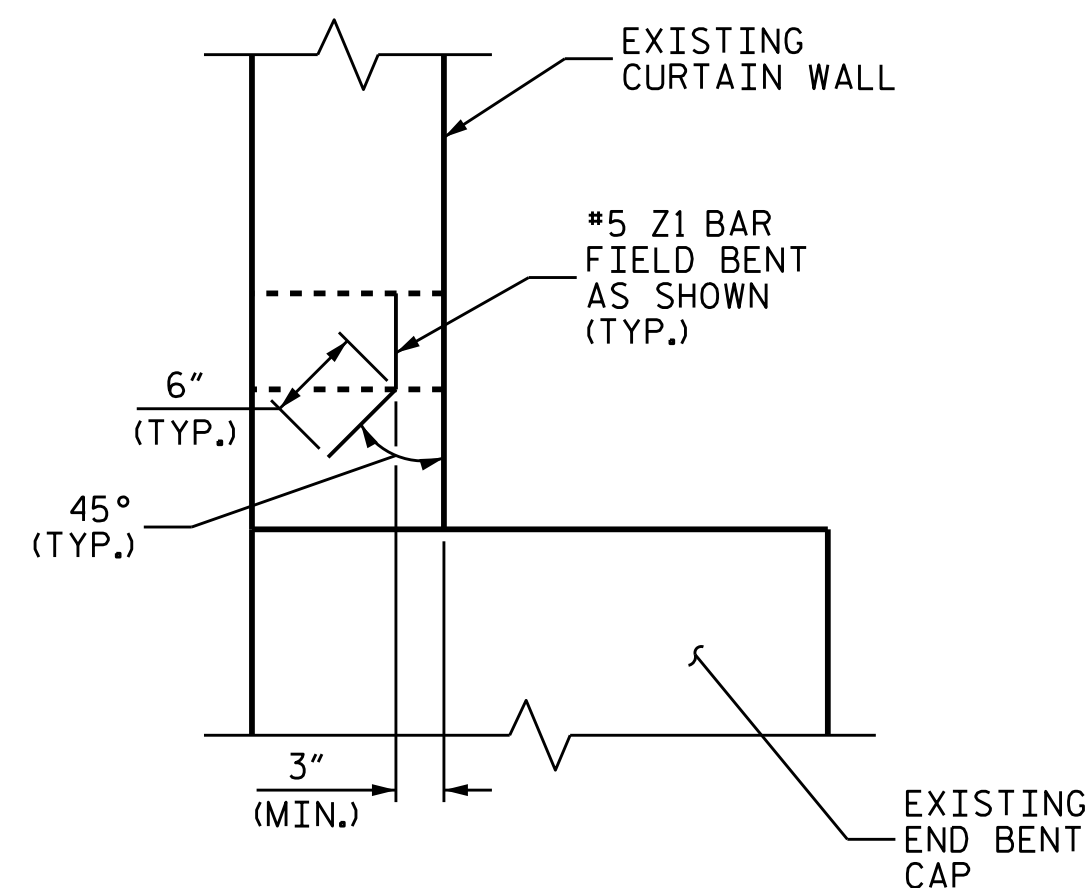
SEALING EXISTING 1/4" STEEL PIPE CONDUIT SLEEVE  
(BAY 8 @ END BENT 1 SHOWN, END BENT 2 SIMILAR)



SECTION G-G



SEALING EXISTING 6" Ø STEEL PIPE SLEEVE  
(BAY 1 @ END BENT 1 SHOWN, END BENT 2 SIMILAR)



SECTION H-H

NOTES

ALL DIMENSIONS AND LOCATIONS OF 1/4" STEEL PIPE CONDUIT SLEEVE, AND 6" Ø STEEL PIPE SLEEVE TAKEN FROM ORIGINAL PLANS.

SEE STANDARD SPECIFICATIONS FOR ADHESIVELY ANCHORED Z1 BARS. FIELD TESTING IS NOT REQUIRED FOR THESE BARS.

ALL #5 Z1 BARS TO BE EMBEDDED 6" @ 45° AND FIELD BENT PARALLEL TO FACE OF CURTAIN WALL.

AFTER INSTALLATION OF REINFORCING, CURTAIN WALL PENETRATIONS SHOWN SHALL BE REPAIRED WITH SHOTCRETE.

FOR SHOTCRETE REPAIR, SEE SPECIAL PROVISIONS.

CONCRETE REPAIRS MAY BE SUBSTITUTED IN LIEU OF SHOTCRETE REPAIRS WITH APPROVAL OF THE ENGINEER.

COST FOR REMOVAL OF EXISTING STEEL PIPE CONDUIT SLEEVE SHALL BE INCIDENTAL TO THE COSTS OF OTHER PAY ITEMS.

BILL OF MATERIAL

END BENT 1

BAR	NO.	SIZE	TYPE	LENGTH	WEIGHT
B1	2	6	STR	2'-10"	9
Z1	11	5	STR	1'-0"	11

REINFORCING STEEL	LBS.	20
SHOTCRETE REPAIR	CU. FT.	3.0

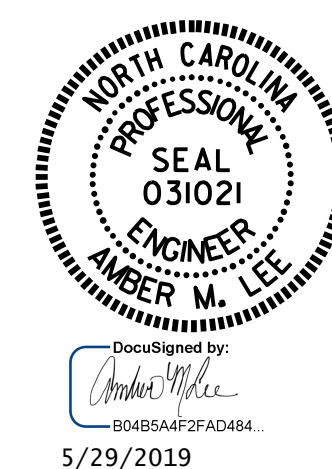
BILL OF MATERIAL

END BENT 2

BAR	NO.	SIZE	TYPE	LENGTH	WEIGHT
B1	2	6	STR	2'-10"	9
Z1	11	5	STR	1'-0"	11

REINFORCING STEEL	LBS.	20
SHOTCRETE REPAIR	CU. FT.	3.0

PROJECT NO. 15BPR.40  
BUNCOMBE COUNTY  
BRIDGE NO. 100481



STATE OF NORTH CAROLINA  
DEPARTMENT OF TRANSPORTATION  
RALEIGH

CURTAIN WALL REPAIR

DRAWN BY : R.L. PUTEK DATE : 01/2019  
CHECKED BY : T.M. SHERRILL DATE : 01/2019

DOCUMENT NOT CONSIDERED  
FINAL UNLESS ALL  
SIGNATURES COMPLETED

REVISIONS						SHEET NO.
NO.	BY:	DATE:	NO.	BY:	DATE:	S1-17
1			3			TOTAL SHEETS
2			4			18