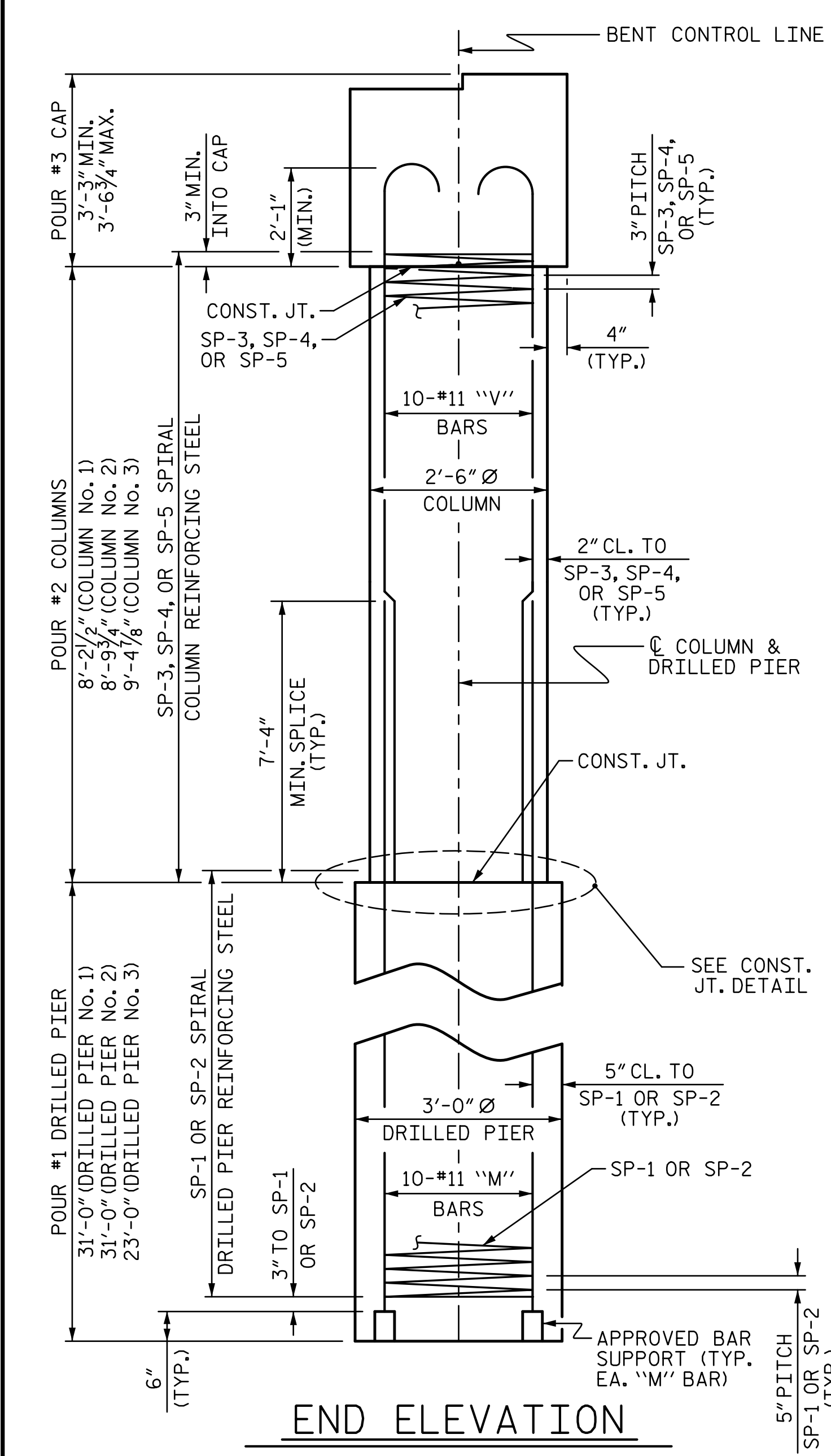
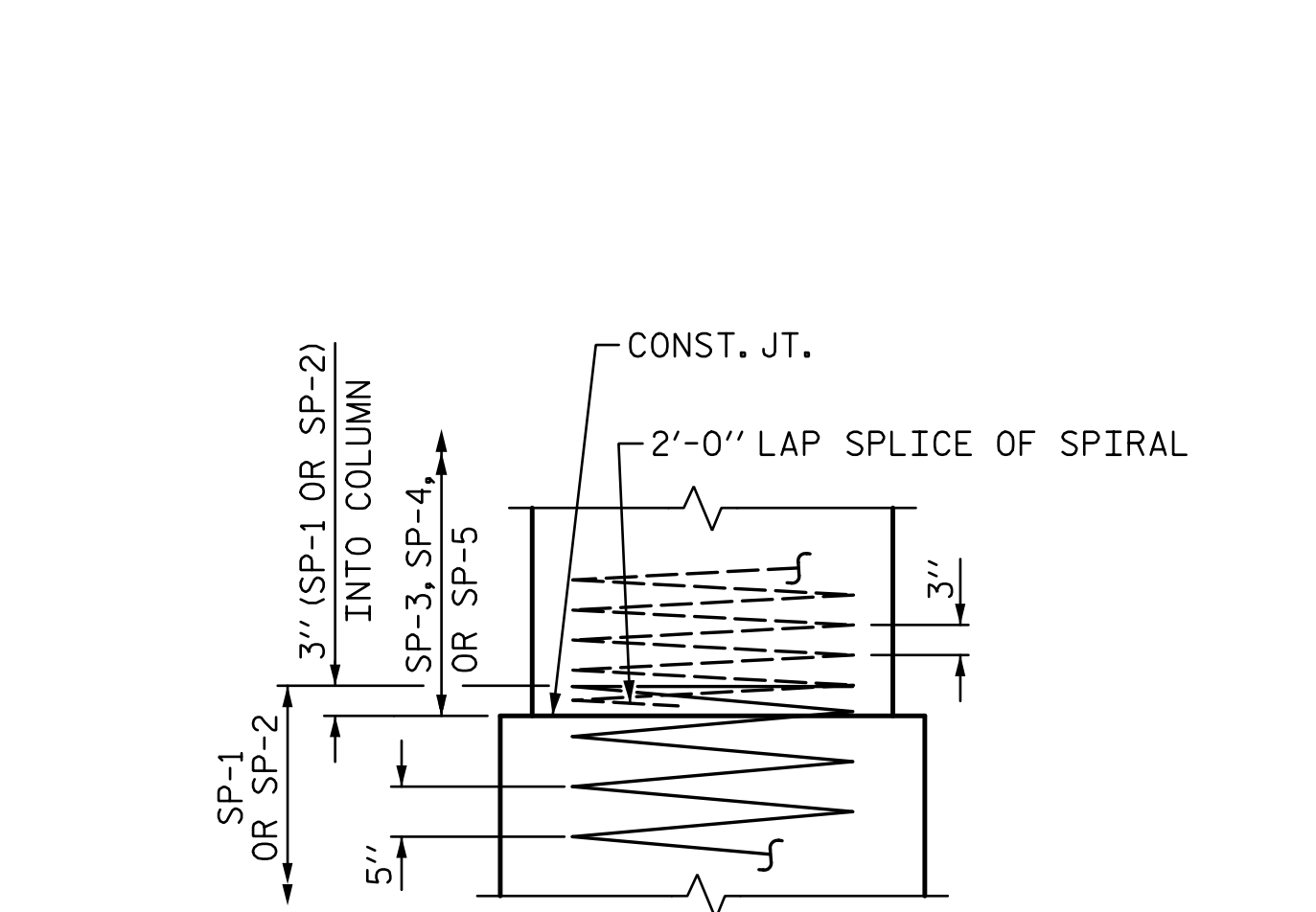


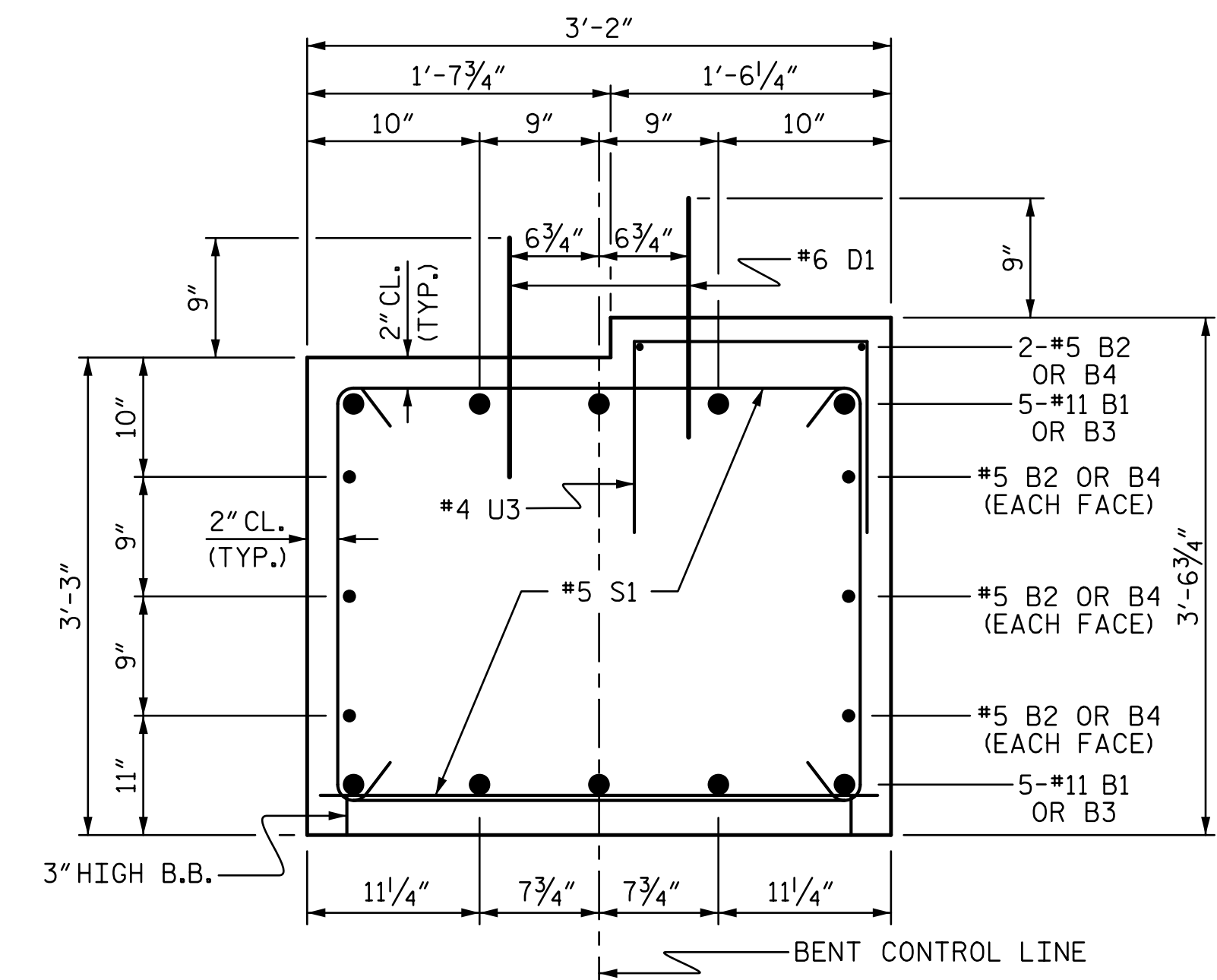
PLAN OF DRILLED PIERS & COLUMNS



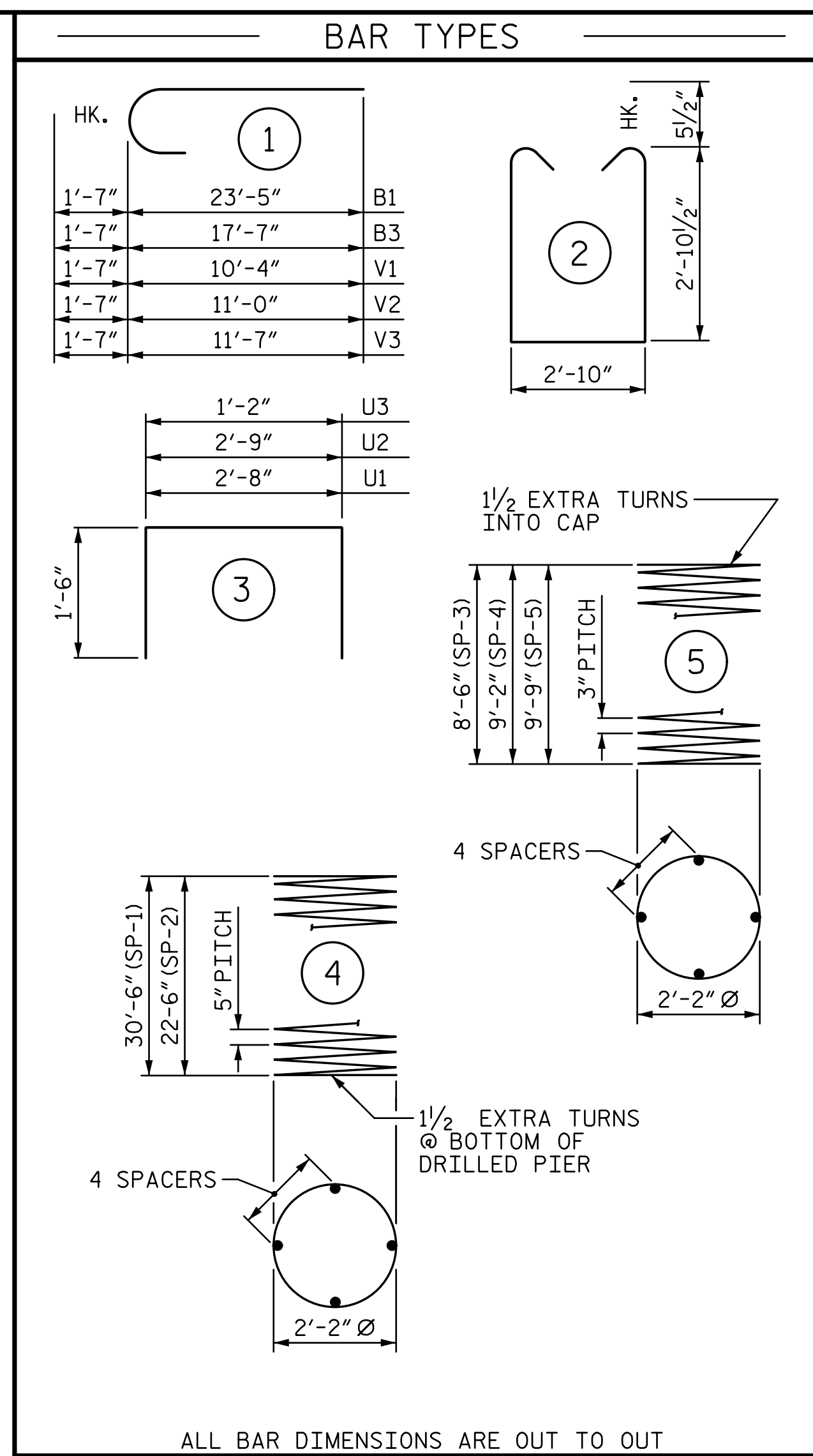
END ELEVATION



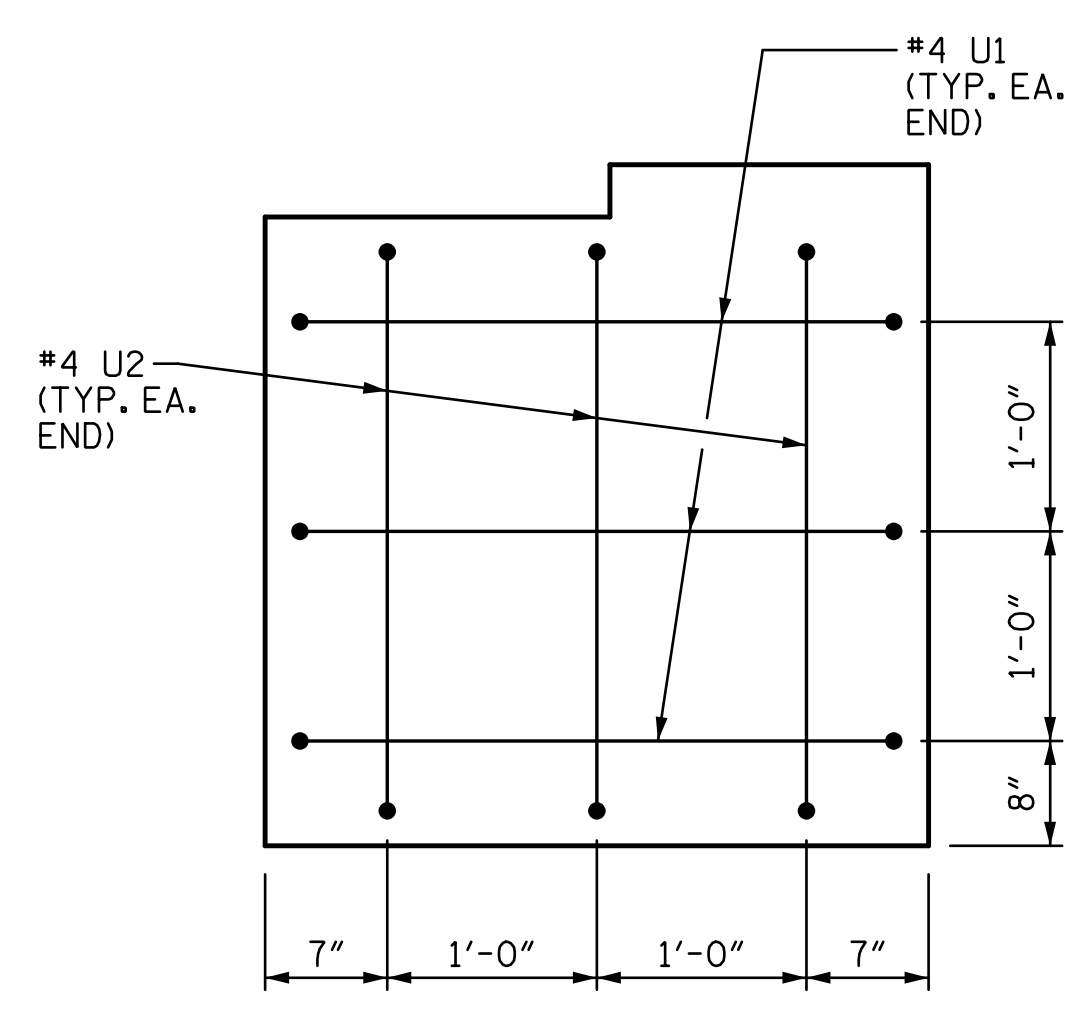
CONSTRUCTION JOINT DETAIL



SECTION THRU CAP

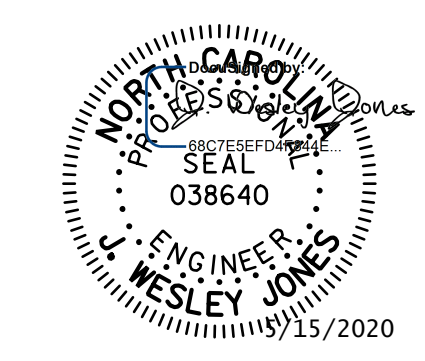


ALL BAR DIMENSIONS ARE OUT TO OUT



END OF CAP VIEW (TYPICAL BOTH ENDS)

BILL OF MATERIAL BENT 1 (STAGE 1)						BILL OF MATERIAL BENT 1 (STAGE 2)							
BAR	NO.	SIZE	TYPE	LENGTH	WEIGHT	BAR	NO.	SIZE	TYPE	LENGTH	WEIGHT		
B1	10	#11	1	25'-0"	1328	B3	10	#11	1	19'-2"	1018		
B2	8	#5	STR	23'-5"	195	B4	8	#5	STR	17'-7"	147		
D1	28	#6	STR	1'-6"	63	D1	24	#6	STR	1'-6"	54		
M1	20	#11	STR	40'-10"	4339	M2	10	#11	STR	32'-10"	1744		
S1	37	#5	2	9'-6"	367	S1	33	#5	2	9'-6"	327		
U1	3	#4	3	5'-8"	11	U1	3	#4	3	5'-8"	11		
U2	3	#4	3	5'-9"	12	U2	3	#4	3	5'-9"	12		
U3	23	#4	3	4'-2"	64	U3	19	#4	3	4'-2"	53		
V1	10	#11	1	11'-11"	633	V3	10	#11	1	13'-2"	700		
V2	10	#11	1	12'-7"	669								
REINFORCING STEEL						7,681 LBS.	REINFORCING STEEL						4,066 LBS.
SP-1	2	*	4	497'-3"	1037	SP-2	1	*	4	369'-6"	385		
SP-3	1	**	5	237'-2"	158	SP-5	1	**	5	270'-7"	181		
SP-4	1	**	5	255'-0"	170	SPIRAL COLUMN REINFORCING STEEL						1,365 LBS.	
SPIRAL COLUMN REINFORCING STEEL						1,365 LBS.	SPIRAL COLUMN REINFORCING STEEL						566 LBS.
* THE SP-1 SPIRAL REINFORCING STEEL SHALL BE W31 OR D-31 COLD DRAWN WIRE OR #5 PLAIN OR DEFORMED BAR						* THE SP-2 SPIRAL REINFORCING STEEL SHALL BE W31 OR D-31 COLD DRAWN WIRE OR #5 PLAIN OR DEFORMED BAR							
* THE SP-3 OR SP-4 SPIRAL REINFORCING STEEL SHALL BE W20 OR D-20 COLD DRAWN WIRE OR #4 PLAIN OR DEFORMED BAR						* THE SP-5 SPIRAL REINFORCING STEEL SHALL BE W20 OR D-20 COLD DRAWN WIRE OR #4 PLAIN OR DEFORMED BAR							
CLASS A CONCRETE BREAKDOWN (STAGE 1)						CLASS A CONCRETE BREAKDOWN (STAGE 2)							
POUR #2 (COLUMNS)						3.1 C.Y.	POUR #2 (COLUMNS)						1.7 C.Y.
POUR #3 (CAP)						9.0 C.Y.	POUR #3 (CAP)						7.5 C.Y.
TOTAL CLASS A CONCRETE						12.1 C.Y.	TOTAL CLASS A CONCRETE						9.2 C.Y.
DRILLED PIERS: (STAGE 1)						DRILLED PIERS: (STAGE 2)							
DRILLED PIER CONCRETE POUR #1 (DRILLED PIERS)						16.2 C.Y.	DRILLED PIER CONCRETE POUR #1 (DRILLED PIERS)						6.0 C.Y.
3'-0" DRILLED PIER NOT IN SOIL						32.0 LIN. FT.	3'-0" DRILLED PIER NOT IN SOIL						16.0 LIN. FT.
3'-0" DRILLED PIER IN SOIL						30.0 LIN. FT.	3'-0" DRILLED PIER IN SOIL						7.0 LIN. FT.
PERMANENT STEEL CASING FOR 3'-0" DRILLED PIER						15.0 LIN. FT.	PERMANENT STEEL CASING FOR 3'-0" DRILLED PIER						11.0 LIN. FT.
CSL TUBES						260.0 LIN. FT.	CSL TUBES						98.0 LIN. FT.



STV ENGINEERS, INC. 100
900 West Trade St., Suite 715
Charlotte, NC 28202
NC License Number F-0991

DOCUMENT NOT CONSIDERED FINAL UNLESS ALL SIGNATURES COMPLETED

PROJECT NO. BR-0126
WILKES COUNTY
STATION: 16+62.00 -L-
SHEET 2 OF 2

REVISIONS				SHEET NO.	
NO.	BY:	DATE:	NO.	BY:	DATE:
1			3		
2			4		

S-21
TOTAL SHEETS 23

5/14/2020 10:16:28 AM R:\Structures\ustation\Finals\401_041_BR-0126_SMU_B2_02L_960667.dgn Jones

DRAWN BY: LAH DATE: 11-19
CHECKED BY: JWJ DATE: 3-20
DESIGN ENGINEER OF RECORD: JWJ DATE: 5-20