

### ANCHOR ASSEMBLY NOTES

THE ANCHOR ASSEMBLY FOR PORTABLE CONCRETE BARRIER SHALL CONSIST OF THE FOLLOWING COMPONENTS :

- A. FERRULES SHALL BE MADE FROM STEEL MEETING THE REQUIREMENTS OF AASHTO M169, GRADE 12L14 AND SHALL HAVE A MINIMUM LENGTH OF THREADS OF 2 1/2".
- B. 2 - 7/8" Ø BOLTS WITH WASHERS, BOLTS SHALL CONFORM TO THE REQUIREMENTS OF ASTM A307. BOLTS AND WASHERS SHALL BE GALVANIZED. (AT THE CONTRACTOR'S OPTION, STAINLESS STEEL BOLTS AND WASHERS MAY BE USED AS AN ALTERNATE FOR THE 7/8" Ø GALVANIZED BOLTS AND WASHERS. THEY SHALL CONFORM TO OR EXCEED THE MECHANICAL REQUIREMENTS OF ASTM A307. THE USE OF THIS ALTERNATE SHALL BE APPROVED BY THE ENGINEER.)
- C. WIRE STRUTS SHOWN IN THE ANCHOR ASSEMBLY DETAIL ARE MINIMUM ALLOWABLE SIZE AND SHALL HAVE A MINIMUM TENSILE STRENGTH OF 100,000 P.S.I.

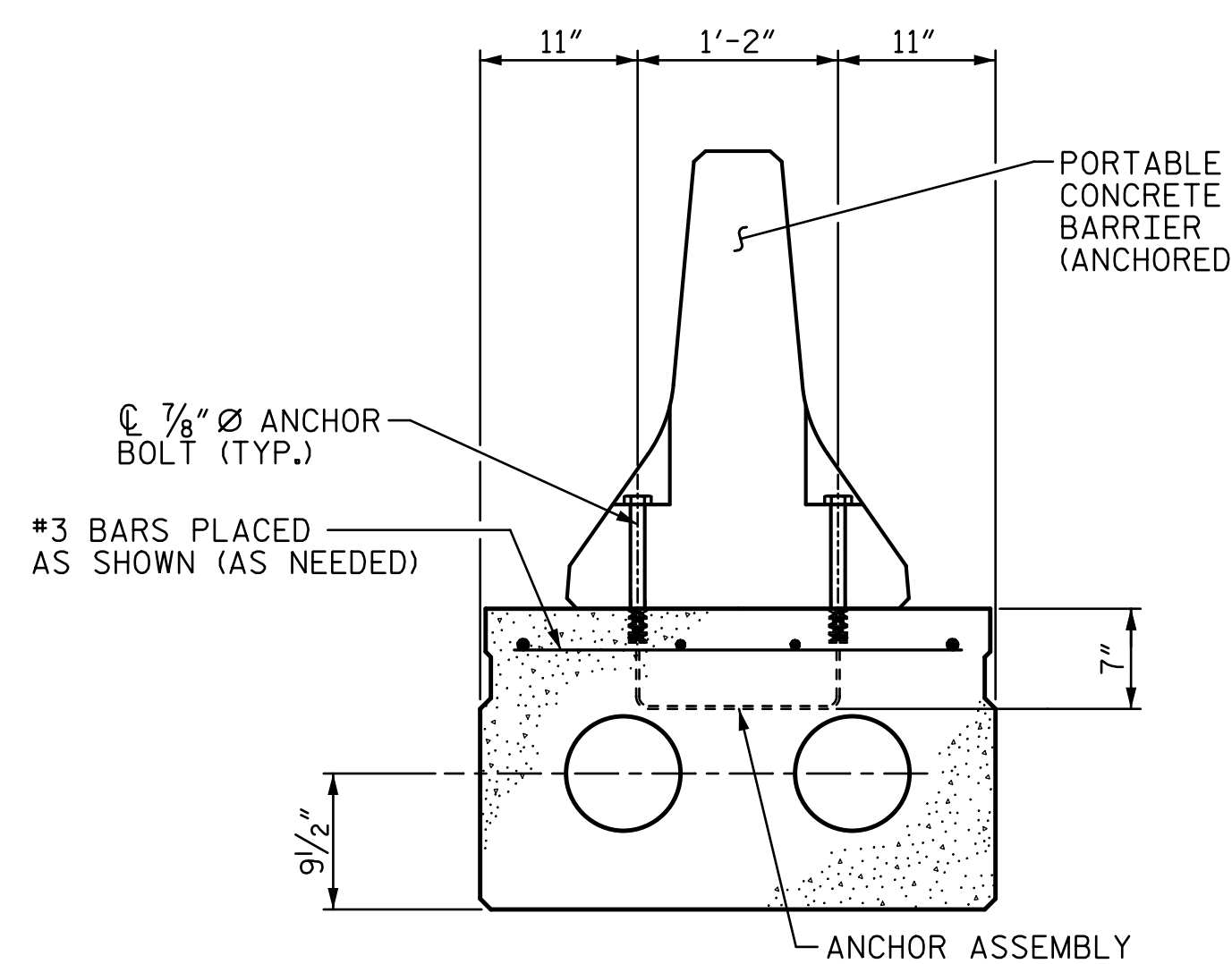
ANCHOR ASSEMBLY WITH BOLTS SHALL BE ASSEMBLED IN THE SHOP. BOLT THREADS MAY BE RECUT AS NECESSARY TO INSURE FIT.

THE COST OF THE ANCHOR ASSEMBLY COMPLETE IN PLACE SHALL BE INCLUDED IN THE UNIT CONTRACT PRICE BID FOR 3'-0" X 1'-9" PRESTRESSED CONCRETE CORED SLABS OR LUMP SUM FOR BRIDGE APPROACH SLABS.

FERRULES TO BE PLUGGED DURING CASTING OF CORED SLAB UNIT OR POURING OF APPROACH SLABS AS RECOMMENDED BY THE MANUFACTURER.

AT THE CONTRACTOR'S OPTION, FERRULES WITH OPEN OR CLOSED ENDS MAY BE USED.

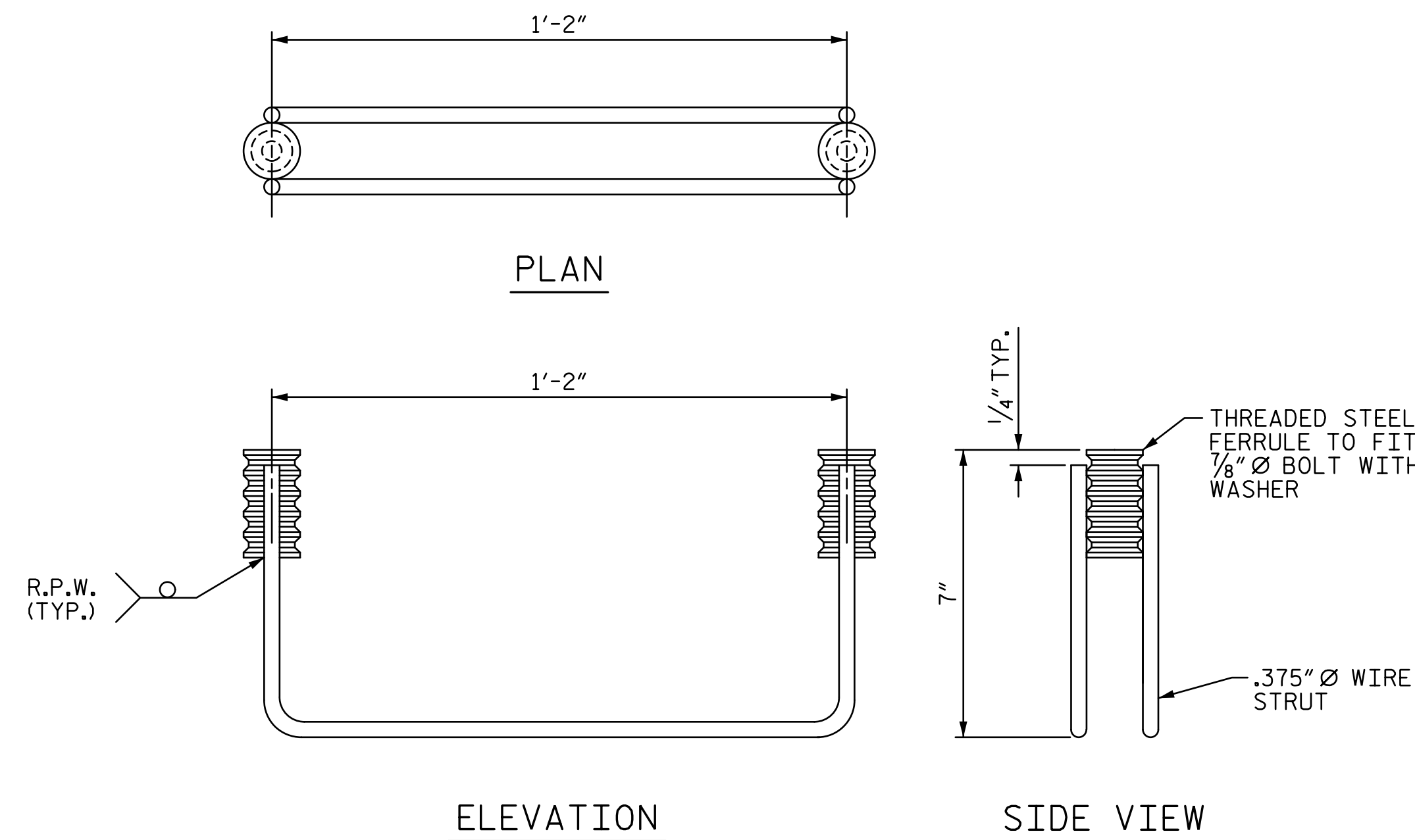
PAYMENT FOR PORTABLE CONCRETE BARRIER IS INCLUDED IN THE TRAFFIC CONTROL PLANS.



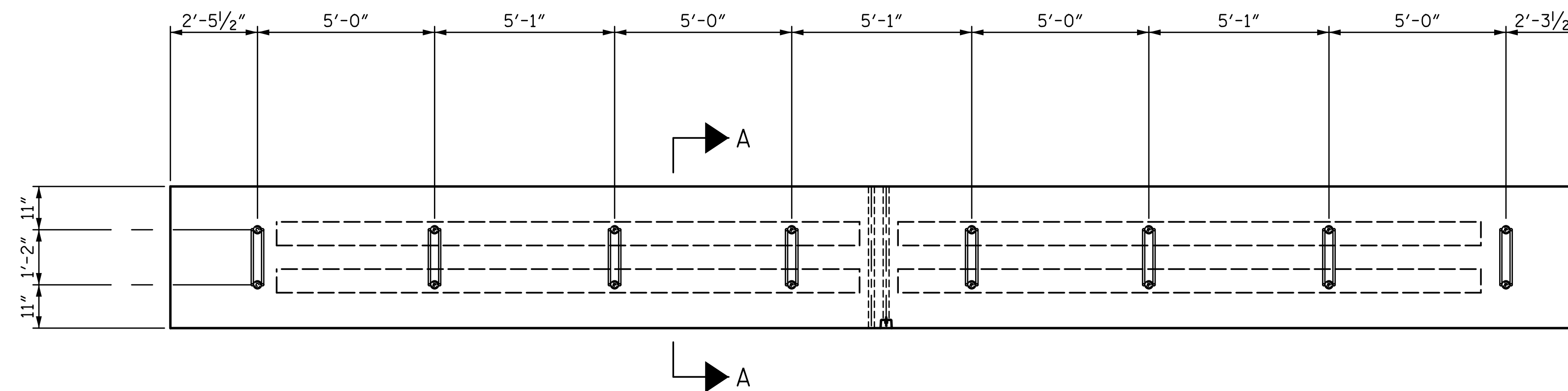
### SECTION A-A

(SHOWING PLACEMENT OF ANCHOR ASSEMBLIES)

NOTE: THE #3 BARS ARE INCIDENTAL AND THEIR COST SHALL BE INCLUDED IN THE PRICE BID FOR THE PRESTRESSED CONCRETE CORED SLAB.

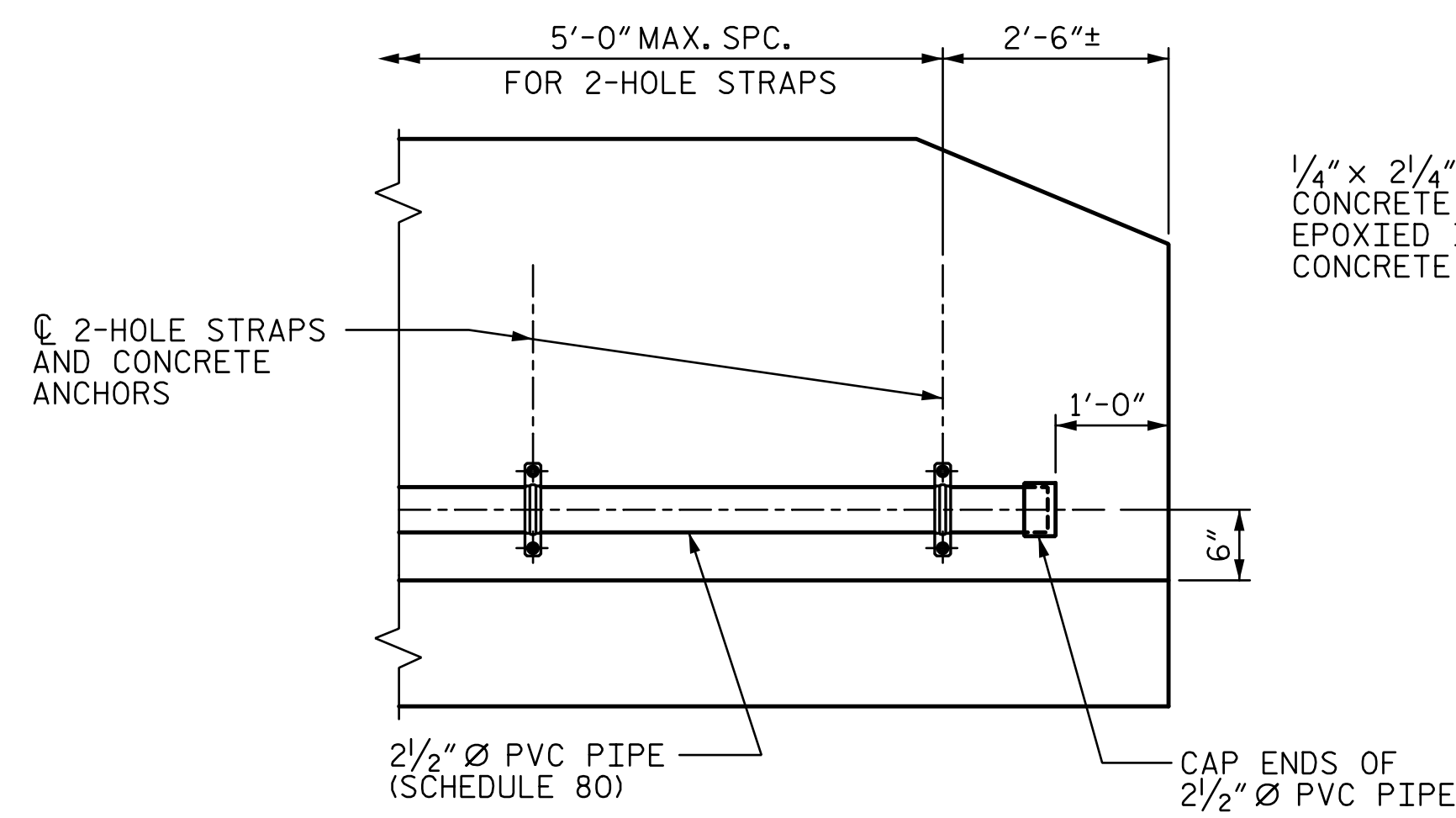


### ANCHOR ASSEMBLY FOR PORTABLE CONCRETE BARRIER



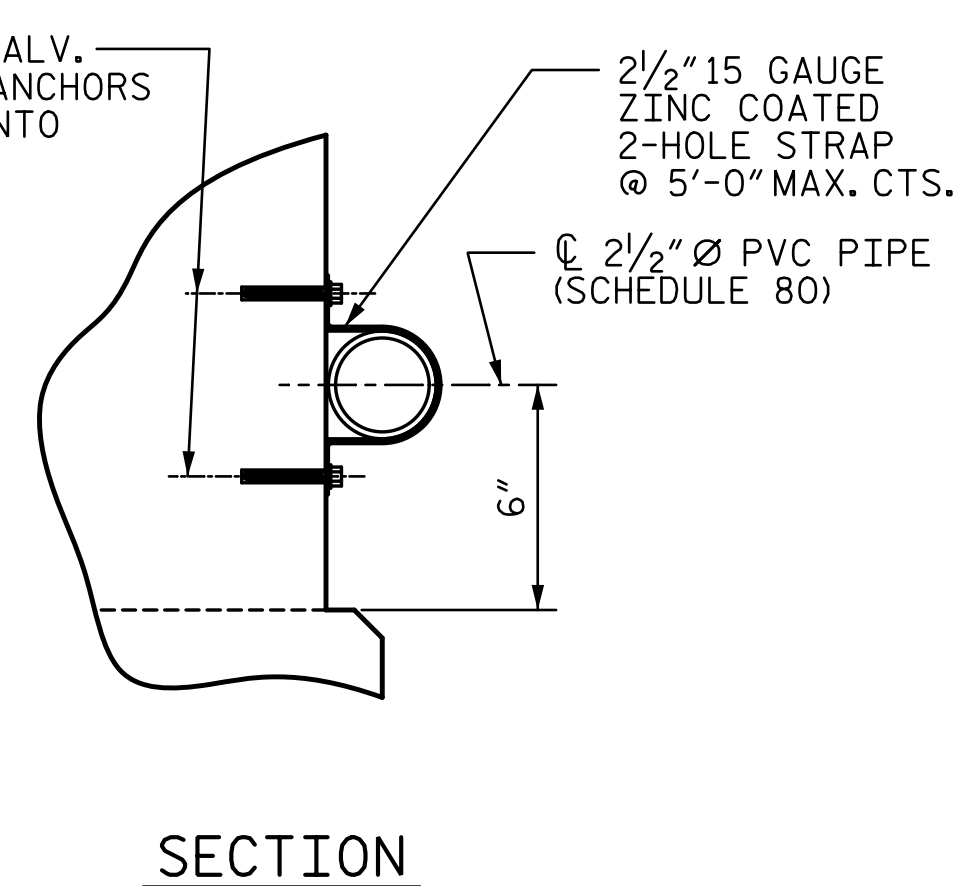
### PLAN OF CORED SLAB UNIT #7

SHOWING ANCHOR ASSEMBLY SPACING  
(8 ASSEMBLIES REQUIRED IN CORED SLAB UNIT)  
(2 ASSEMBLIES REQUIRED IN APPROACH SLAB AT END BENT 2.  
FOR LOCATIONS, SEE BRIDGE APPROACH SLAB SHEET.)



### FIBER OPTIC CONDUIT SYSTEM DETAILS

2 1/2" Ø SCHEDULE 80 PVC PIPE ATTACHED TO THE BACK OF BOTH RAILS FOR FUTURE FIBER OPTIC CABLE.



### SECTION

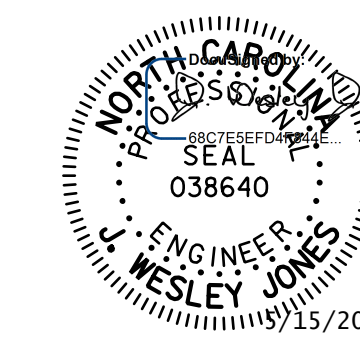
PROJECT NO. BR-0126

WILKES COUNTY

STATION: 16+62.00 -L-

SHEET 3 OF 4

STATE OF NORTH CAROLINA  
DEPARTMENT OF TRANSPORTATION  
RALEIGH  
3'-0" X 1'-9"  
PRESTRESSED CONCRETE  
CORED SLAB UNIT  
90° SKEW  
(SPAN B)



STV 100 YEARS STV ENGINEERS, INC.  
900 West Trade St., Suite 715  
Charlotte, NC 28202  
NC License Number F-0991

DOCUMENT NOT CONSIDERED  
FINAL UNLESS ALL  
SIGNATURES COMPLETED

REVISIONS				SHEET NO.
NO.	BY:	DATE:	NO.	DATE:
1			3	
2			4	

S-13  
TOTAL SHEETS 23

DRAWN BY : LEM DATE : 1-20  
CHECKED BY : JWJ DATE : 3-20  
DESIGN ENGINEER OF RECORD : JWJ DATE : 5-20

R:\Structures\ustation\Finals\40L\_025\_BR-0126\_SML\_CST\_013\_960667.dgn 5/14/2020 10:16:16 AM Jones