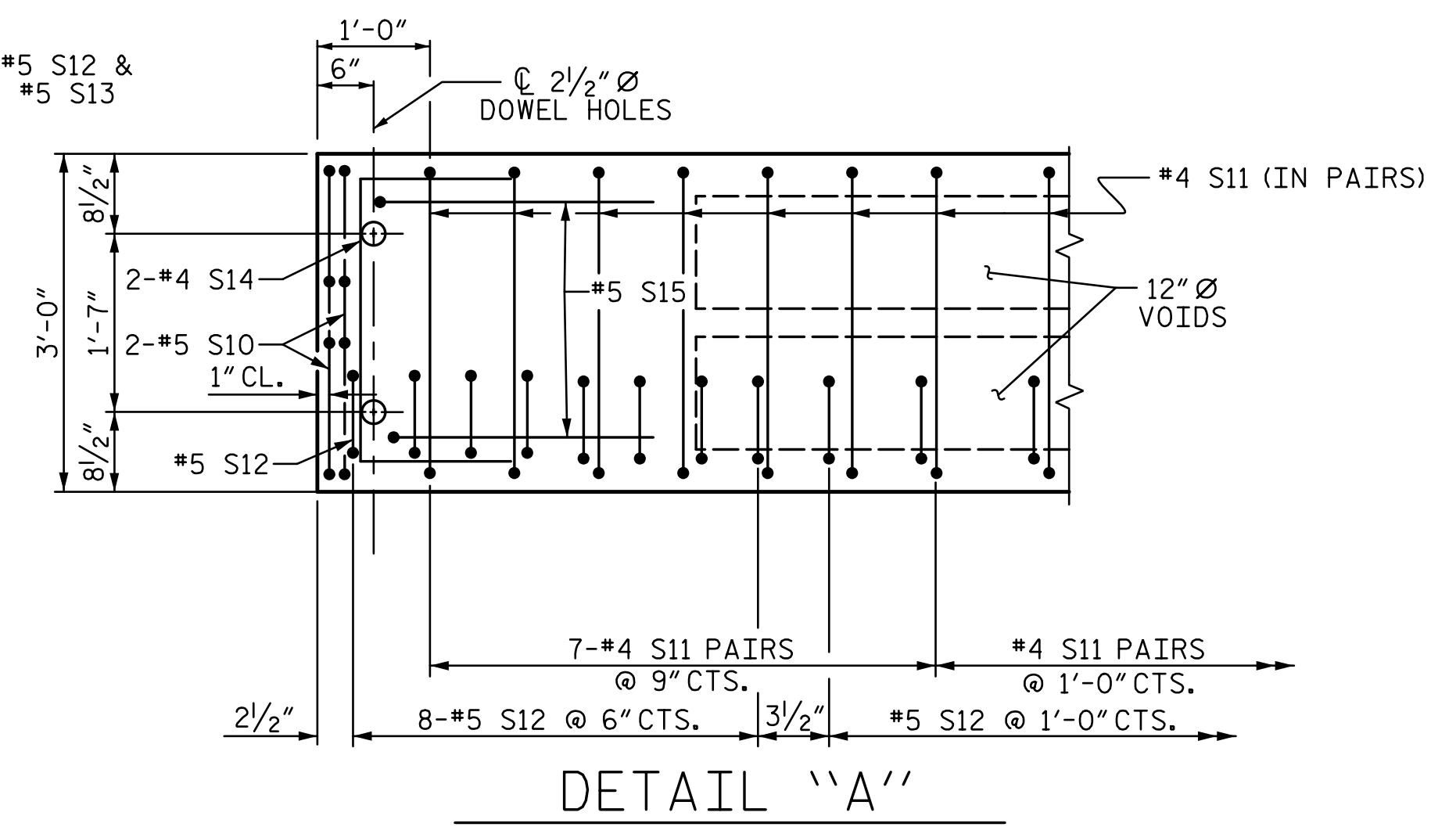
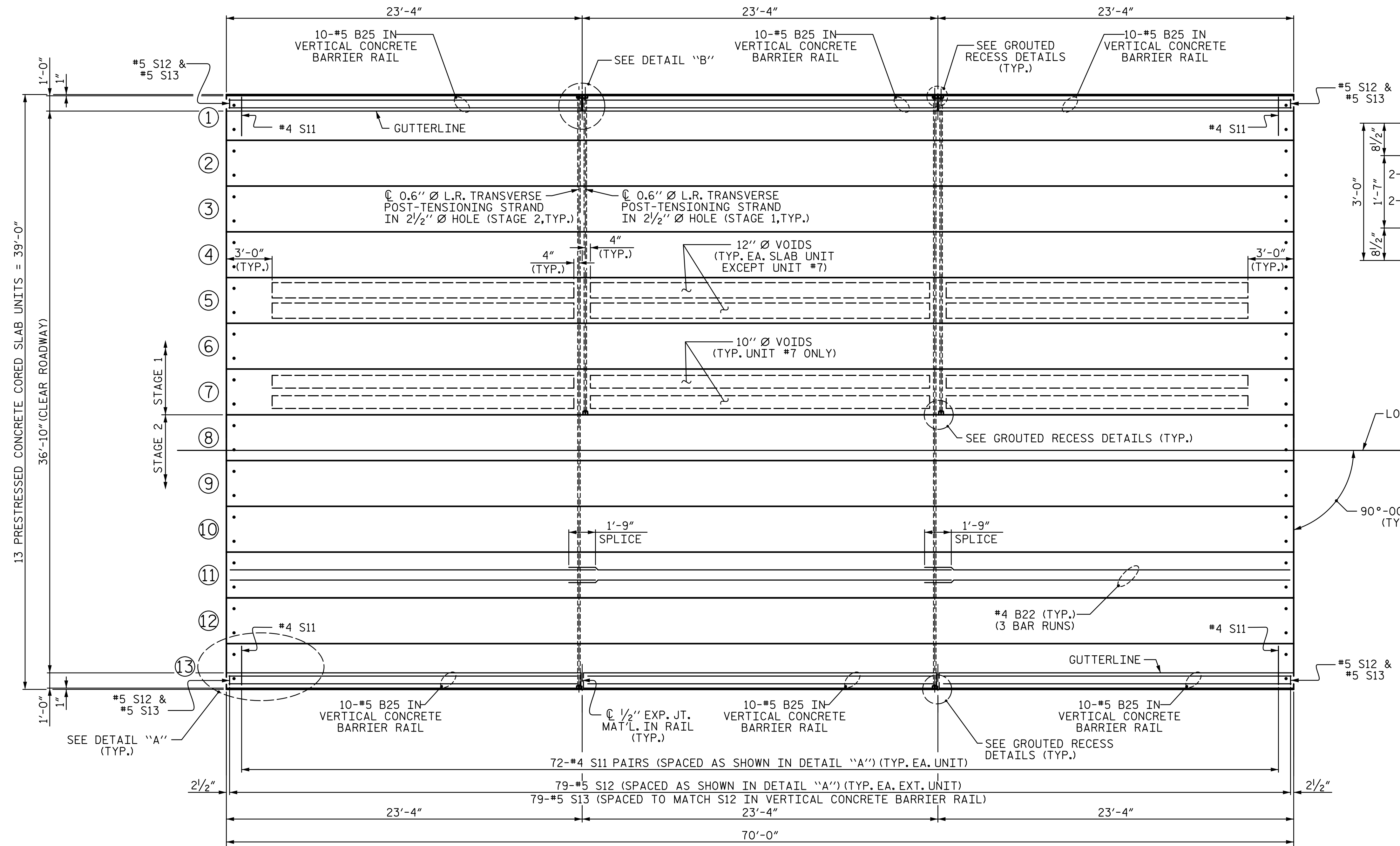
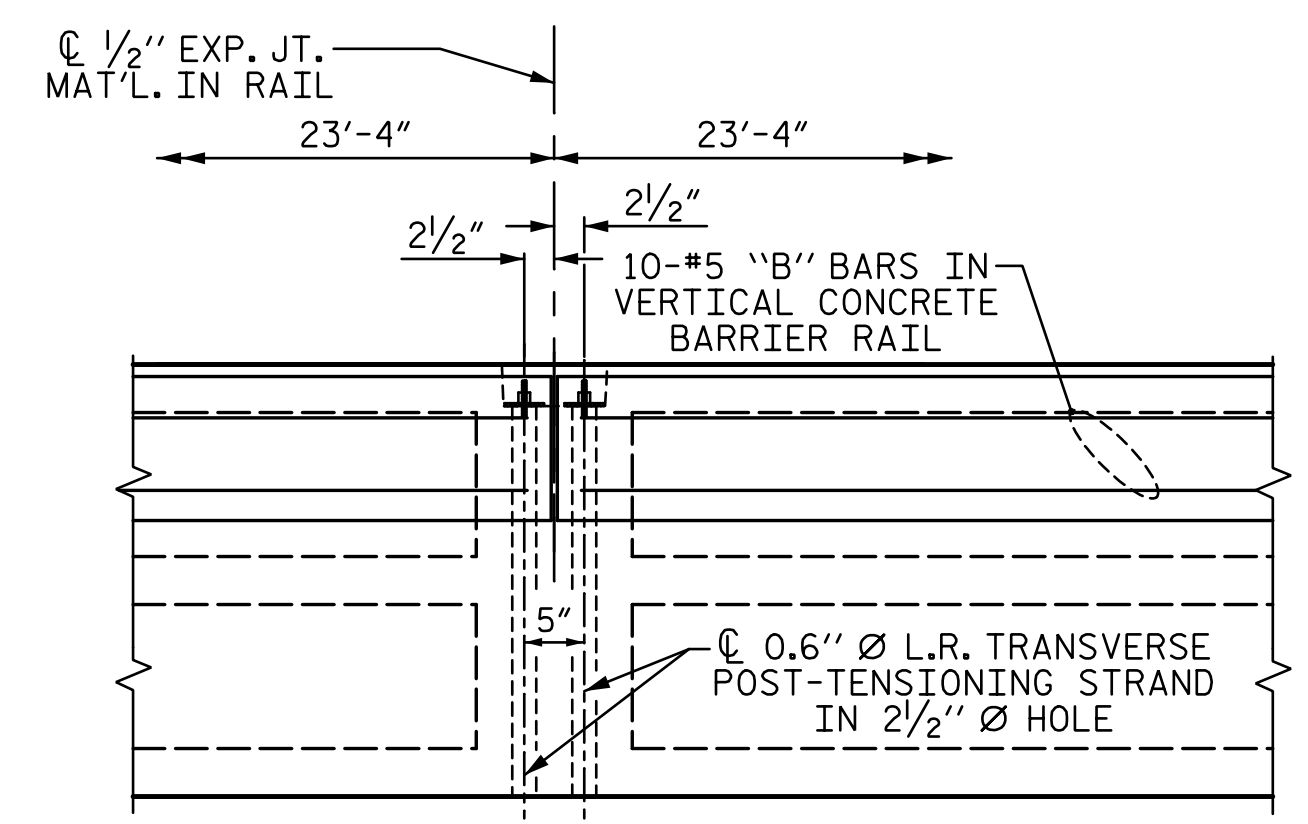


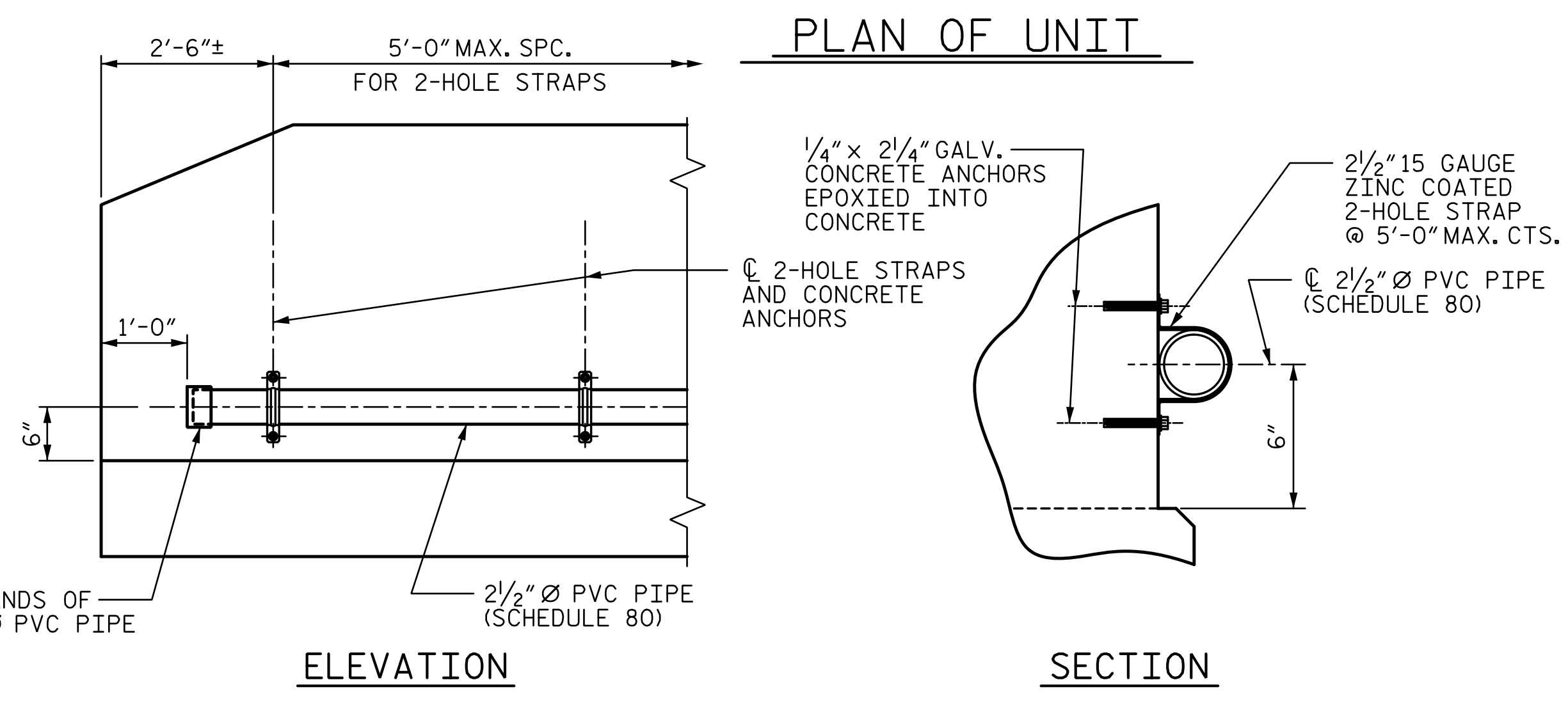
R:\Structures\ustation\Finals\4015_BR-0126_SMU_CS2_008_960667.dgn 5/14/2020 10:16:08 AM Jones



DETAIL "A"
(TYPICAL EACH END OF UNIT)
NOTE: EXTERIOR UNIT SHOWN - INTERIOR UNIT SIMILAR EXCEPT OMIT #5 S12 BARS.



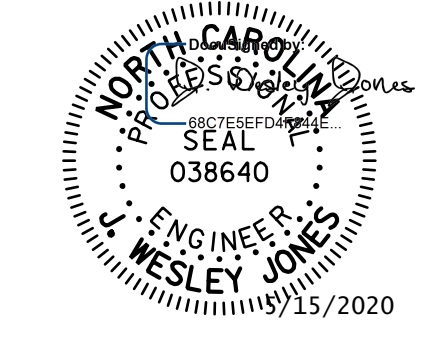
DETAIL "B"
#4 S11 BARS MAY BE SHIFTED AS NECESSARY TO MAINTAIN 1" CLEAR TO GROUDED RECESS AND 2 1/2" Ø TRANSVERSE POST-TENSIONING STRAND HOLES



FIBER OPTIC CONDUIT SYSTEM DETAILS

2 1/2" Ø SCHEDULE 80 PVC PIPE ATTACHED TO THE BACK OF BOTH RAILS FOR FUTURE FIBER OPTIC CABLE.

PROJECT NO. BR-0126
WILKES COUNTY
 STATION: 16+62.00 -L-
 SHEET 2 OF 4



STV ENGINEERS, INC.
 900 West Trade St., Suite 715
 Charlotte, NC 28202
 NC License Number F-0991

DOCUMENT NOT CONSIDERED FINAL UNLESS ALL SIGNATURES COMPLETED

STATE OF NORTH CAROLINA DEPARTMENT OF TRANSPORTATION RALEIGH					
PLAN OF 70' UNIT 36'-10" CLEAR ROADWAY 90° SKEW (SPAN A)					
REVISIONS					SHEET NO.
NO.	BY:	DATE:	NO.	BY:	DATE:
1			3		
2			4		
					S-8
					TOTAL SHEETS 23

DRAWN BY : LAH DATE : 11-19
 CHECKED BY : JWJ DATE : 3-20
 DESIGN ENGINEER OF RECORD : JWJ DATE : 5-20