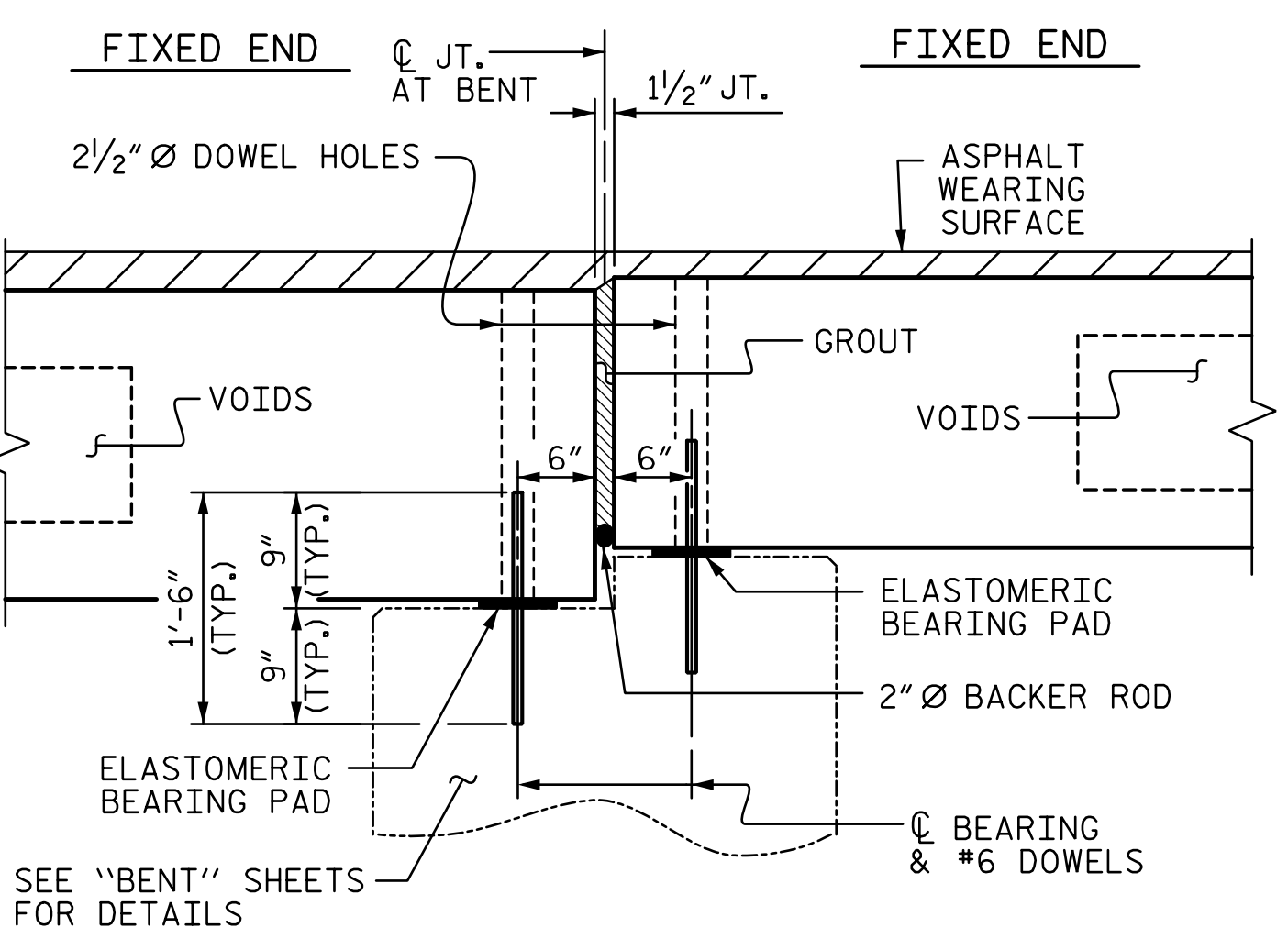
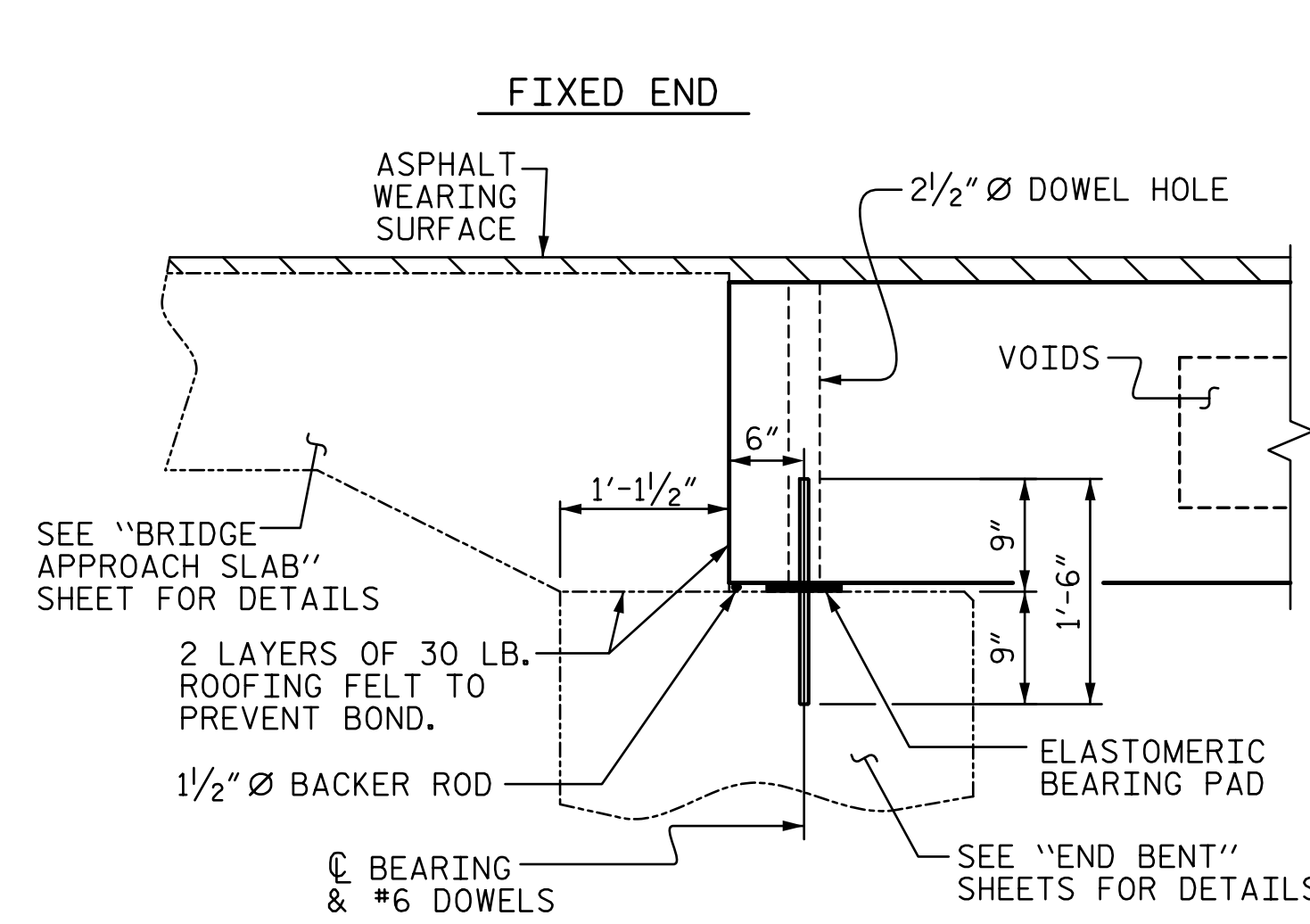


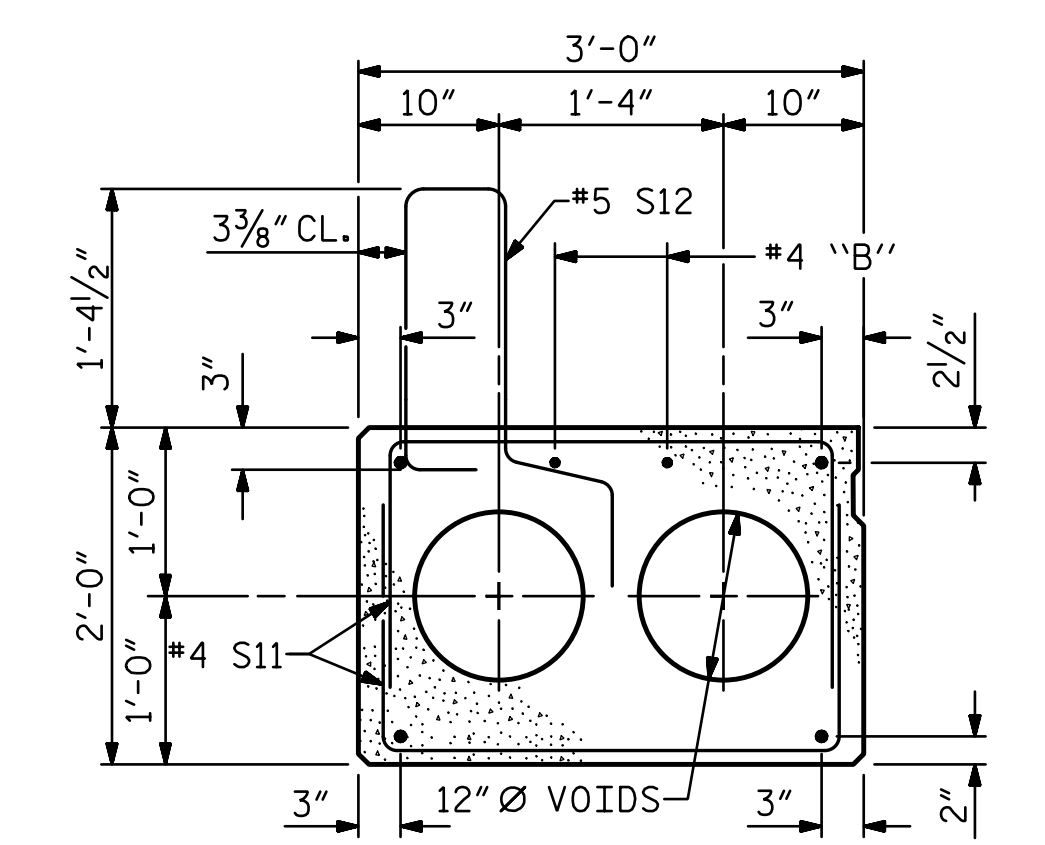
HALF SECTION AT INTERMEDIATE DIAPHRAGMS  
 TYPICAL SECTION  
 HALF SECTION THROUGH VOIDS

\* - THE MAXIMUM BARRIER RAIL HEIGHT AND ASPHALT THICKNESS IS SHOWN. THE HEIGHT OF THE BARRIER RAIL AND ASPHALT THICKNESS VARIES WHILE THE TOP OF THE BARRIER RAIL FOLLOWS THE PROFILE OF THE GUTTERLINE. FOR RAIL HEIGHT DETAILS AND ASPHALT THICKNESS, SEE THE "VERTICAL CONCRETE BARRIER RAIL SECTION" DETAIL.



SECTION AT END BENT 1

SECTION AT BENT

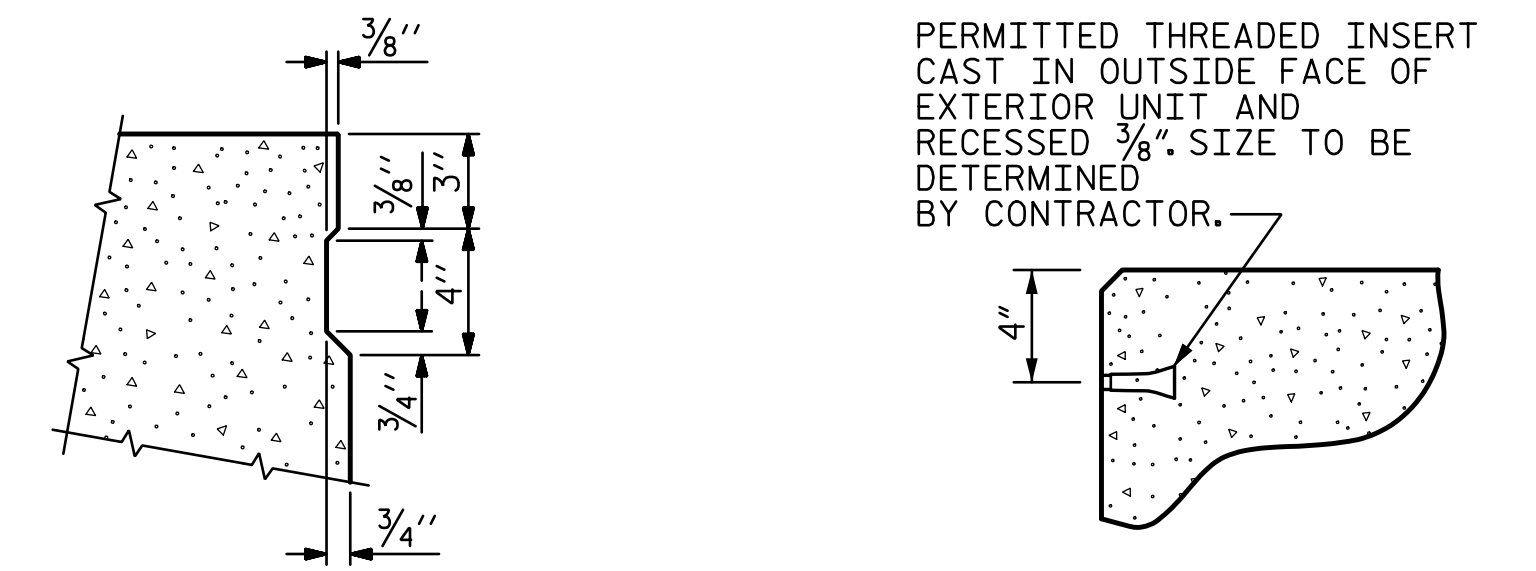


EXTERIOR SLAB SECTION  
 (FOR PRESTRESSED STRAND LAYOUT, SEE INTERIOR SLAB SECTION.)

- ◆ BOND SHALL BE BROKEN ON THESE STRANDS FOR A DISTANCE OF 10'-0" FROM END OF CORED SLAB UNIT. SEE STANDARD SPECIFICATIONS, ARTICLE 1078-7.
- ▲ BOND SHALL BE BROKEN ON THESE STRANDS FOR A DISTANCE OF 12'-0" FROM END OF CORED SLAB UNIT. SEE STANDARD SPECIFICATIONS, ARTICLE 1078-7.

DEBONDING LEGEND

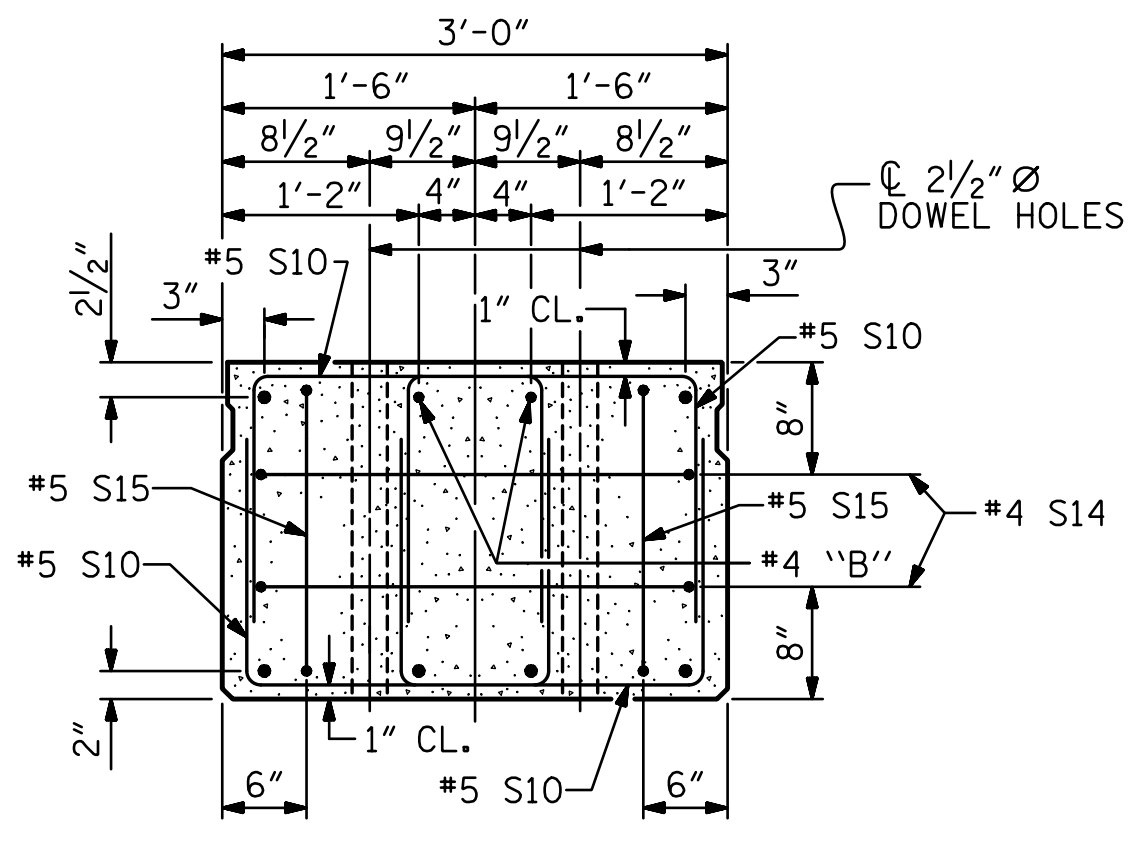
GROUPED RECESS AT END OF POST-TENSIONED STRAND CORED SLABS



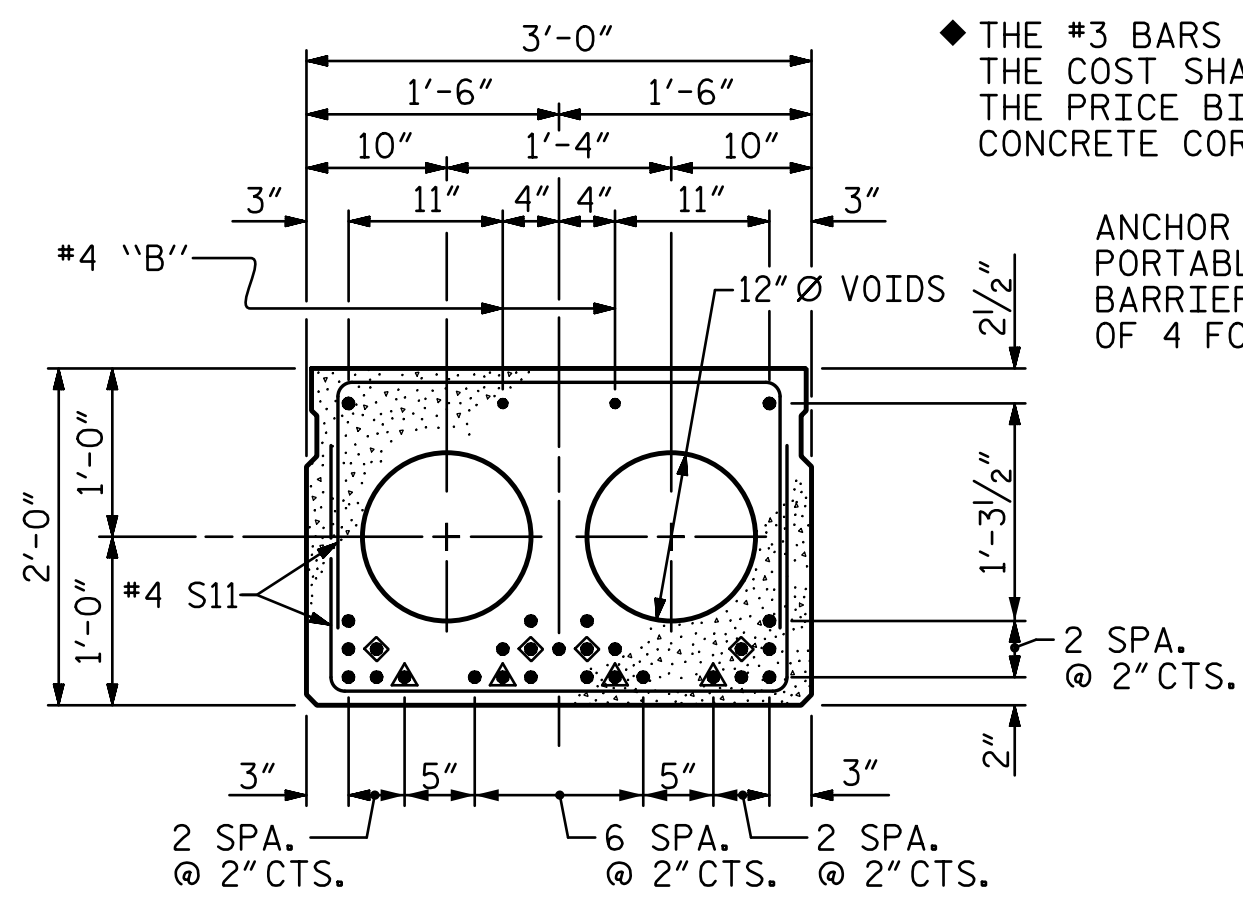
SHEAR KEY DETAIL

THREADED INSERT DETAIL

NOTE: OMIT SHEAR KEY ON OUTSIDE FACE OF EXTERIOR CORED SLABS.



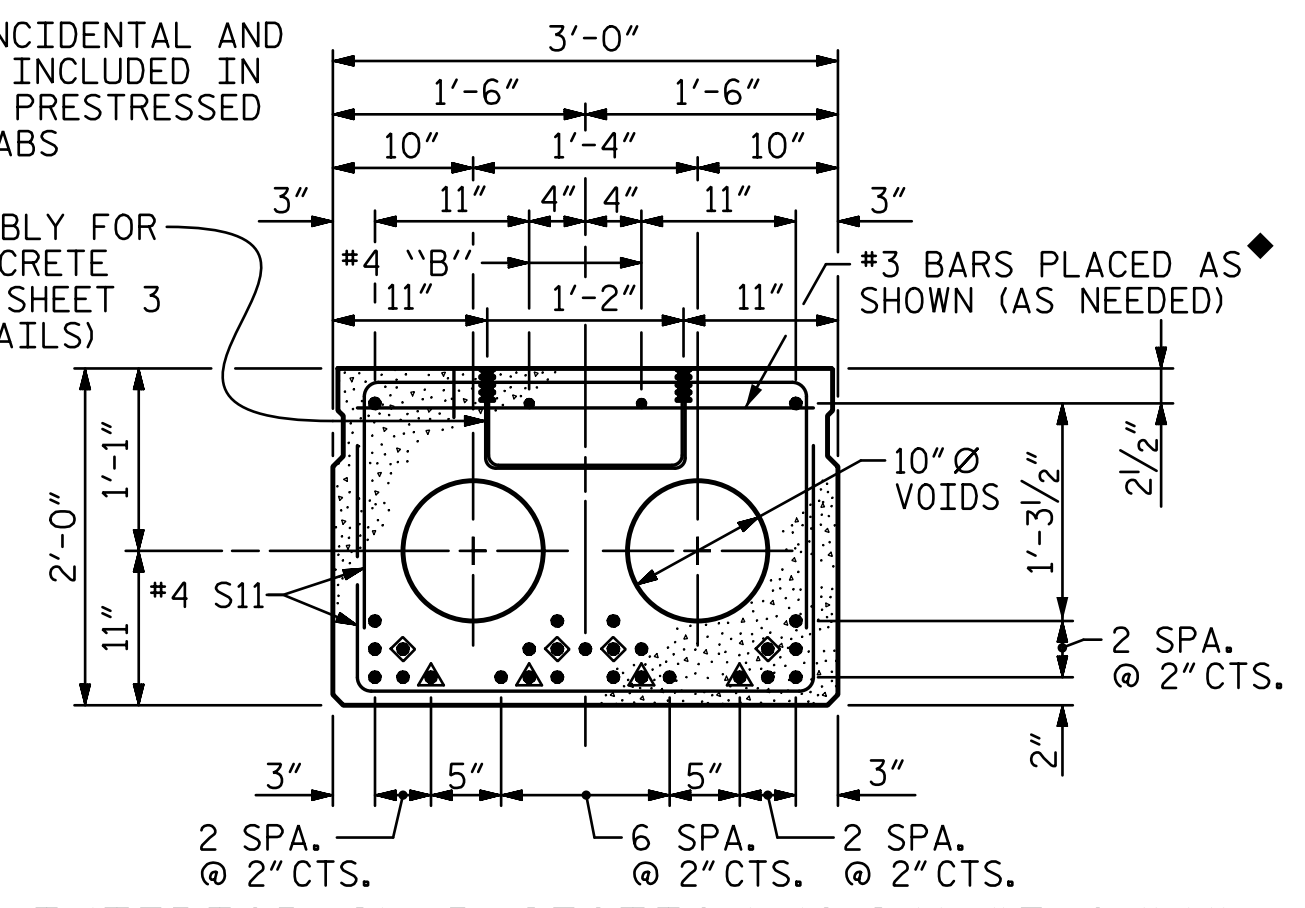
END ELEVATION



INTERIOR SLAB SECTION (EXCEPT C.S.U. #7)  
 (27 STRANDS REQUIRED)

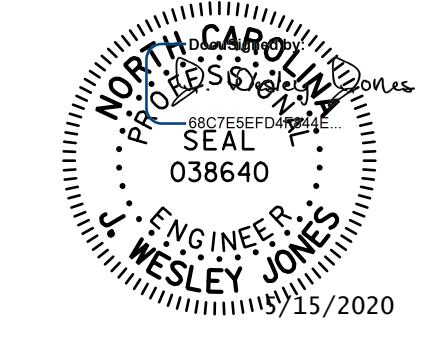
◆ THE #3 BARS ARE INCIDENTAL AND THE COST SHALL BE INCLUDED IN THE PRICE BID FOR PRESTRESSED CONCRETE CORED SLABS

ANCHOR ASSEMBLY FOR PORTABLE CONCRETE BARRIER (SEE SHEET 3 OF 4 FOR DETAILS)



INTERIOR SLAB SECTION (C.S.U. #7 ONLY)  
 (27 STRANDS REQUIRED)

0.6" Ø LOW RELAXATION STRAND LAYOUT



STV ENGINEERS, INC.  
 900 West Trade St., Suite 715  
 Charlotte, NC 28202  
 NC License Number F-0991

DOCUMENT NOT CONSIDERED FINAL UNLESS ALL SIGNATURES COMPLETED

PROJECT NO. BR-0126

WILKES COUNTY

STATION: 16+62.00 -L-

SHEET 1 OF 4

STATE OF NORTH CAROLINA  
 DEPARTMENT OF TRANSPORTATION  
 RALEIGH

3'-0" X 2'-0"  
 PRESTRESSED CONCRETE  
 CORED SLAB UNIT  
 (SPAN A)

| REVISIONS |     |       |     | SHEET NO. |
|-----------|-----|-------|-----|-----------|
| NO.       | BY: | DATE: | NO. | DATE:     |
| 1         |     |       | 3   |           |
| 2         |     |       | 4   |           |

TOTAL SHEETS: 23

R:\Structures\ustation\Finals\401.013.BR-0126\_SMU\_CSL.00T\_960667.dgn  
 10/6/20 AM  
 5/14/2020  
 Jones

DRAWN BY: LAH DATE: 11-19  
 CHECKED BY: JWJ DATE: 3-20  
 DESIGN ENGINEER OF RECORD: JWJ DATE: 5-20