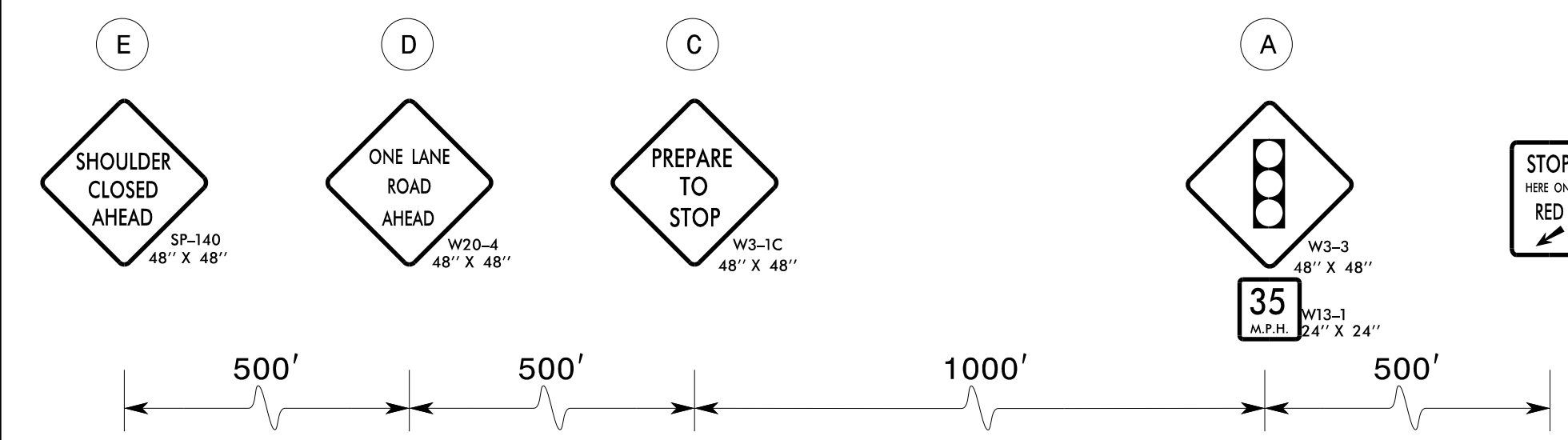
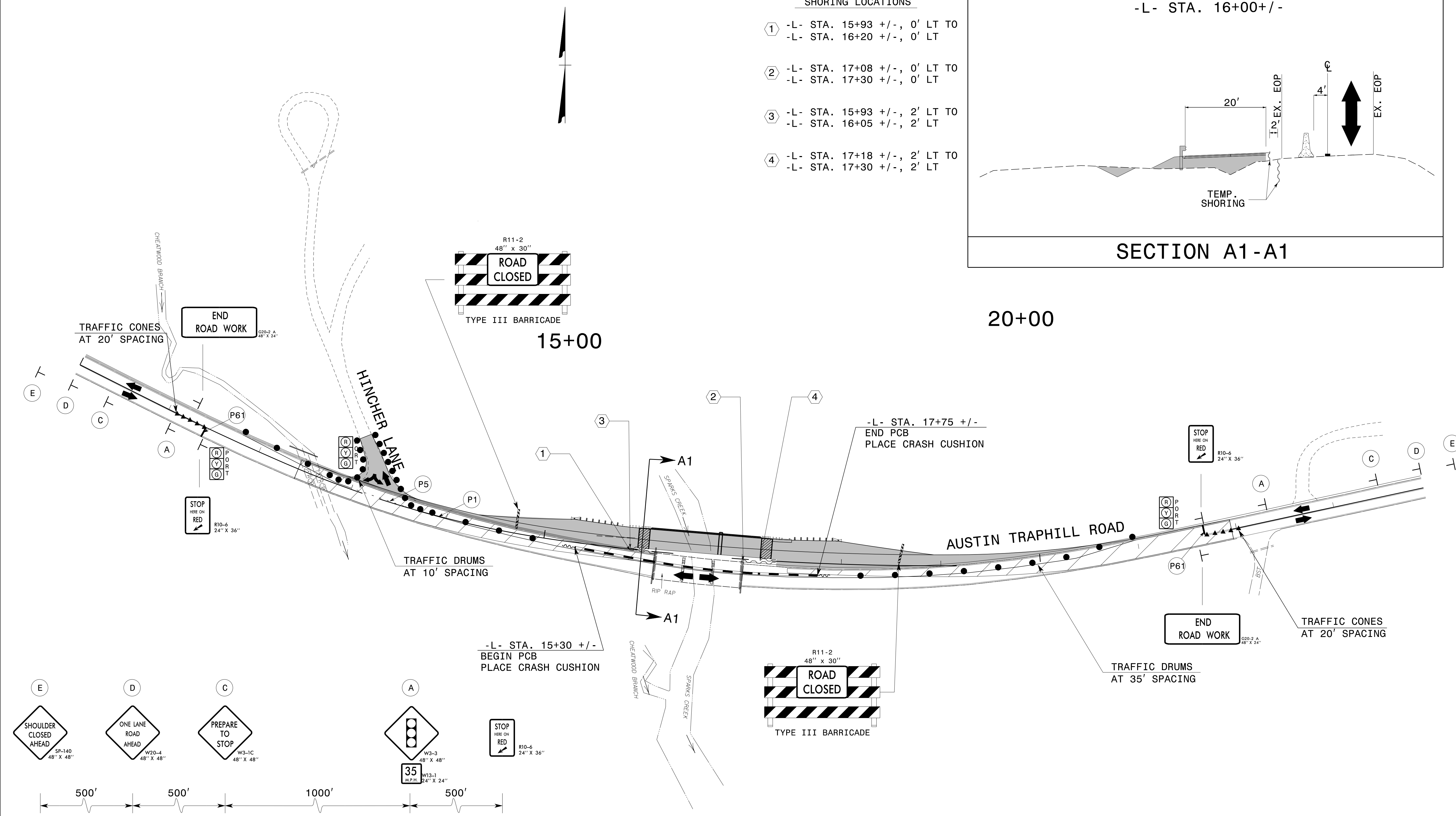
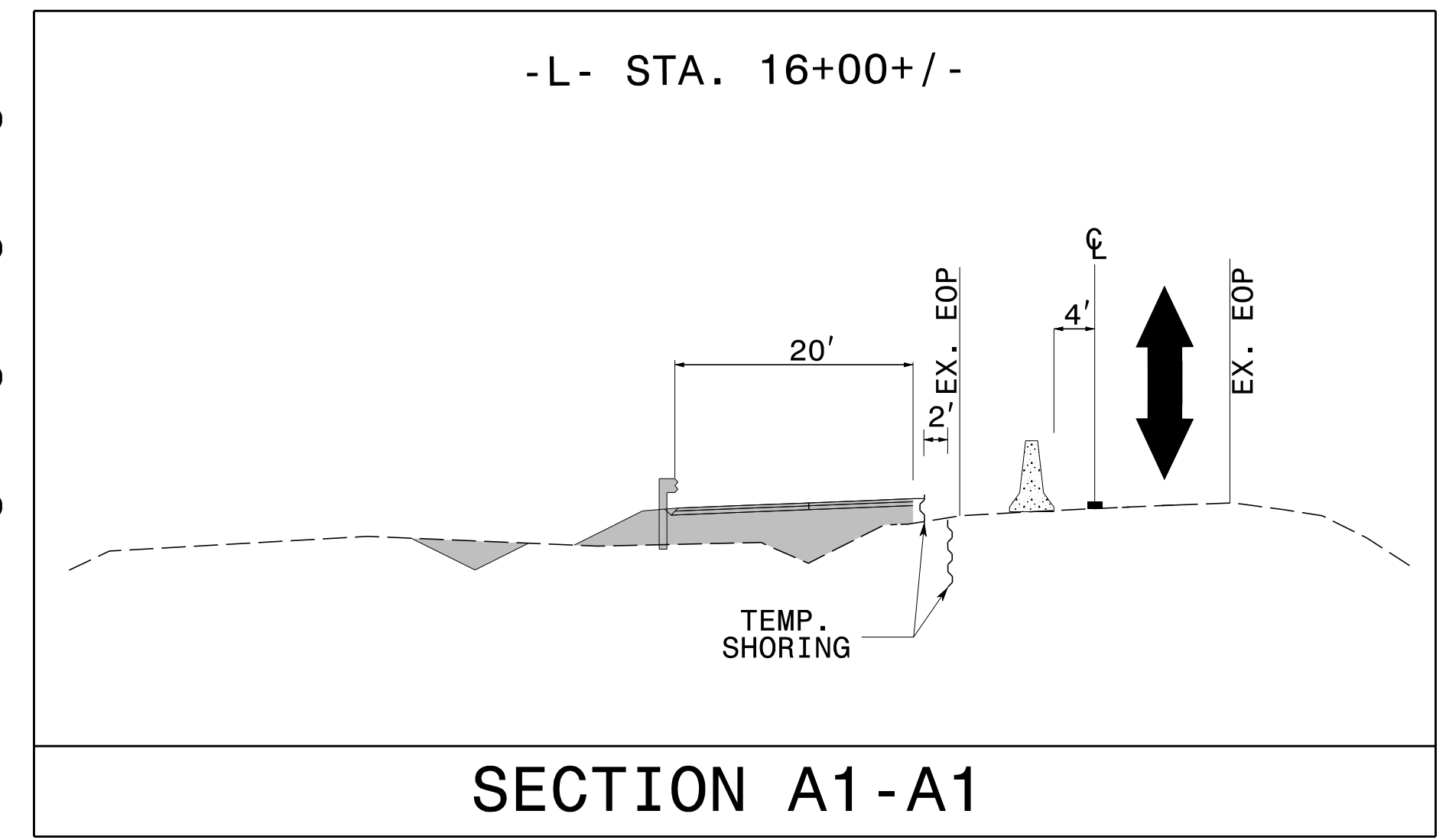


- SHORING LOCATIONS**
- ① -L- STA. 15+93 +/-, 0' LT TO
-L- STA. 16+20 +/-, 0' LT
 - ② -L- STA. 17+08 +/-, 0' LT TO
-L- STA. 17+30 +/-, 0' LT
 - ③ -L- STA. 15+93 +/-, 2' LT TO
-L- STA. 16+05 +/-, 2' LT
 - ④ -L- STA. 17+18 +/-, 2' LT TO
-L- STA. 17+30 +/-, 2' LT



NOTES:

MAINTAIN 30 FT TO 40 FT DISTANCE BETWEEN "STOP HERE ON RED" SIGN AND PORTABLE SIGNAL.

USE 3 CONES OR DRUMS TO DELINEATE DRIVEWAY AND PORTABLE SIGNAL DEVICES.

20+00

NOT TO SCALE

<p>APPROVED: <i>Kenneth C. Thornewell Jr., P.E.</i></p> <p>DATE: 5/12/2020</p> <p>SEAL</p> <p>DOCUMENT NOT CONSIDERED FINAL UNLESS ALL SIGNATURES COMPLETED</p>		<p>PHASE I DETAILS</p>
---	--	------------------------

5/11/2020
 \\dot\dfsroot\0\NSProj\Special\BR0126\TrafficControl\TC\BR-0126-TC-TMP-04.dgn
 User: jdbaver1