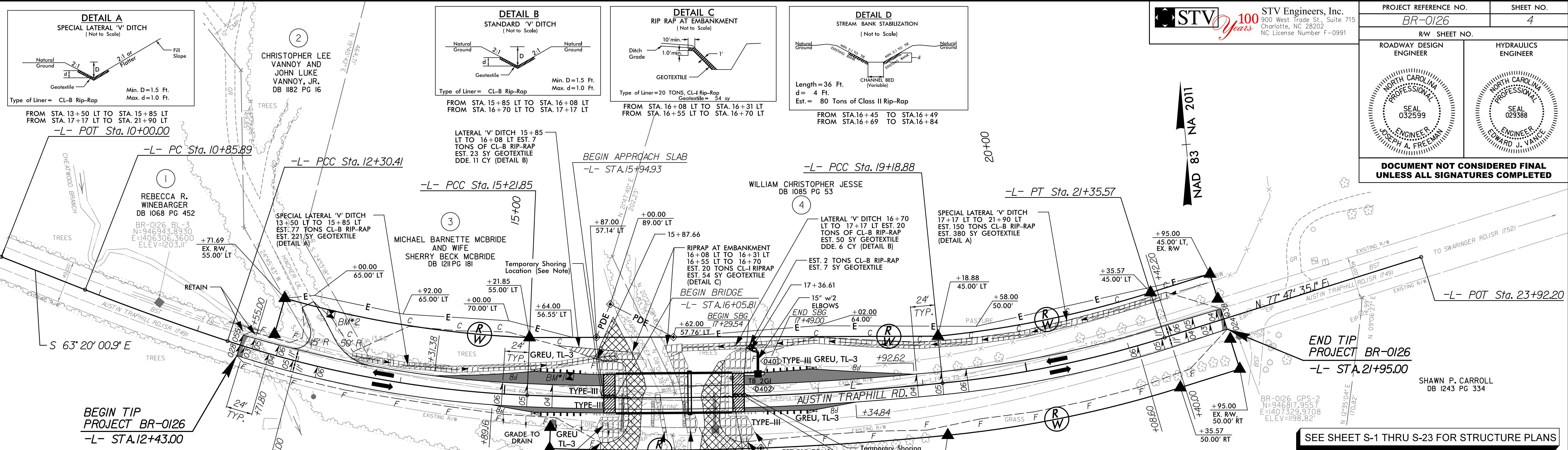


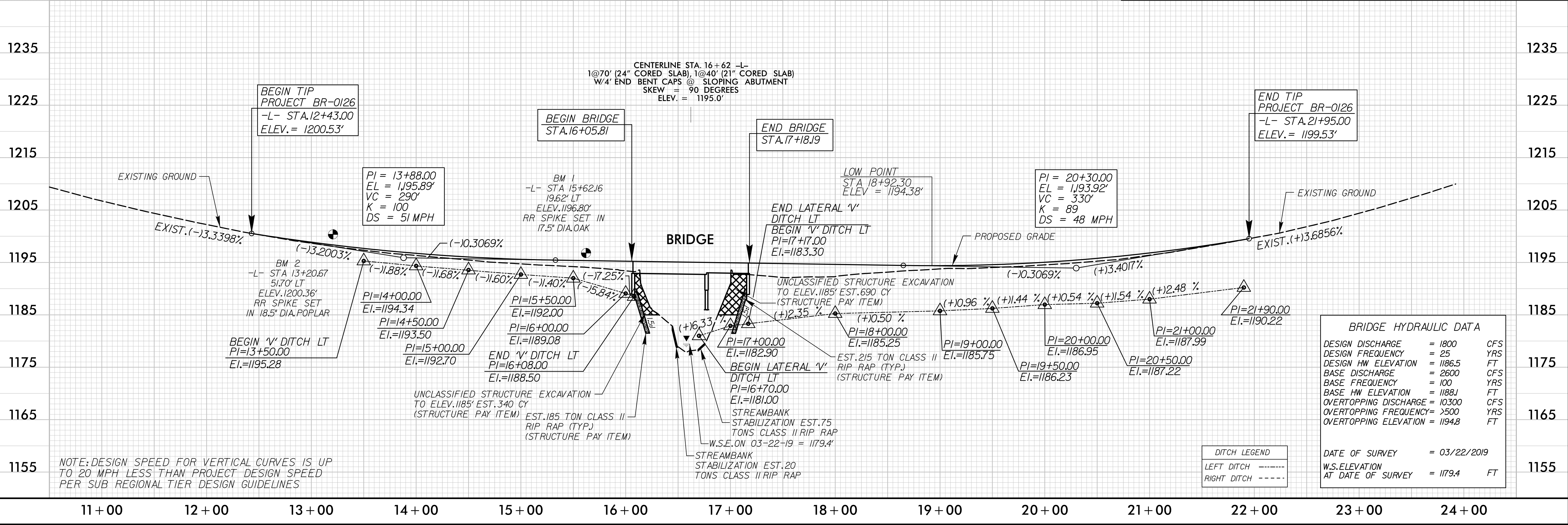
8/17/99



**NOTE: SHORING LOCATIONS**  
(See TMP Plans and 2G-1 for Shoring Details)

LOCATION#	BEGIN STA. & OFFSET	END STA. & OFFSET
No. 1	15+93' 0" LT	16+20' 0" LT
No. 2	17+08' 2" LT	17+30' 2" LT
No. 3	15+93' 2" LT	16+05' 2" LT
No. 4	17+18' 2" LT	17+30' 2" LT

PI Sta	PI Sta	PI Sta	PI Sta
11+58.17	13+77.05	17+20.70	20+27.61
$\Delta = 3' 18" 43.1" (LT)$	$\Delta = 15' 45" 11.5" (LT)$	$\Delta = 8' 05" 43.9" (LT)$	$\Delta = 11' 42" 45.5" (LT)$
$D = 2' 17" 30.6"$	$D = 5' 24' 18.9"$	$D = 2' 02" 20.4"$	$D = 5' 24' 18.9"$
$L = 144.51'$	$L = 291.44'$	$L = 397.04'$	$L = 216.69'$
$T = 72.28'$	$T = 146.65'$	$T = 198.85'$	$T = 108.72'$
$R = 2,500.00'$	$R = 1,060.00'$	$R = 2,810.00'$	$R = 1,060.00'$
$e = EXIST$	$e = 6\%$	$e = 4\%$	$e = 6\%$
$DS = EXIST$	$DS = 55 MPH$	$DS = 55 MPH$	$DS = 55 MPH$
	$RO = 144'$	$RO = 96'$	$RO = 144'$



**BRIDGE HYDRAULIC DATA**

DESIGN DISCHARGE	= 1800	CFS
DESIGN FREQUENCY	= 25	YRS
DESIGN HW ELEVATION	= 1186.5	FT
BASE DISCHARGE	= 2600	CFS
BASE FREQUENCY	= 100	YRS
BASE HW ELEVATION	= 1188.1	FT
OVERTOPPING DISCHARGE	= 10300	CFS
OVERTOPPING FREQUENCY	= 2500	YRS
OVERTOPPING ELEVATION	= 1194.8	FT

DATE OF SURVEY = 03/22/2019  
W.S. ELEVATION AT DATE OF SURVEY = 1179.4 FT

I:\2020\proj\BR-0126\PSH\BR-0126\_RDY\_PSH\_04.dgn