

PI = 17+20.00
 EL = 165.05
 VC = 158'

GRADE DATA -L-
 (-)0.3467% (+)0.5897%

HYDRAULIC DATA

DESIGN DISCHARGE = 500 C.F.S.
 FREQUENCY OF DESIGN FLOOD = 25 YRS.
 DESIGN HIGH WATER ELEVATION = 160.4
 DRAINAGE AREA = 2.2 SQ. MI.
 BASE DISCHARGE (Q10Q) = 700 C.F.S.
 BASE HIGH WATER ELEVATION = 160.8

OVERTOPPING FLOOD DATA

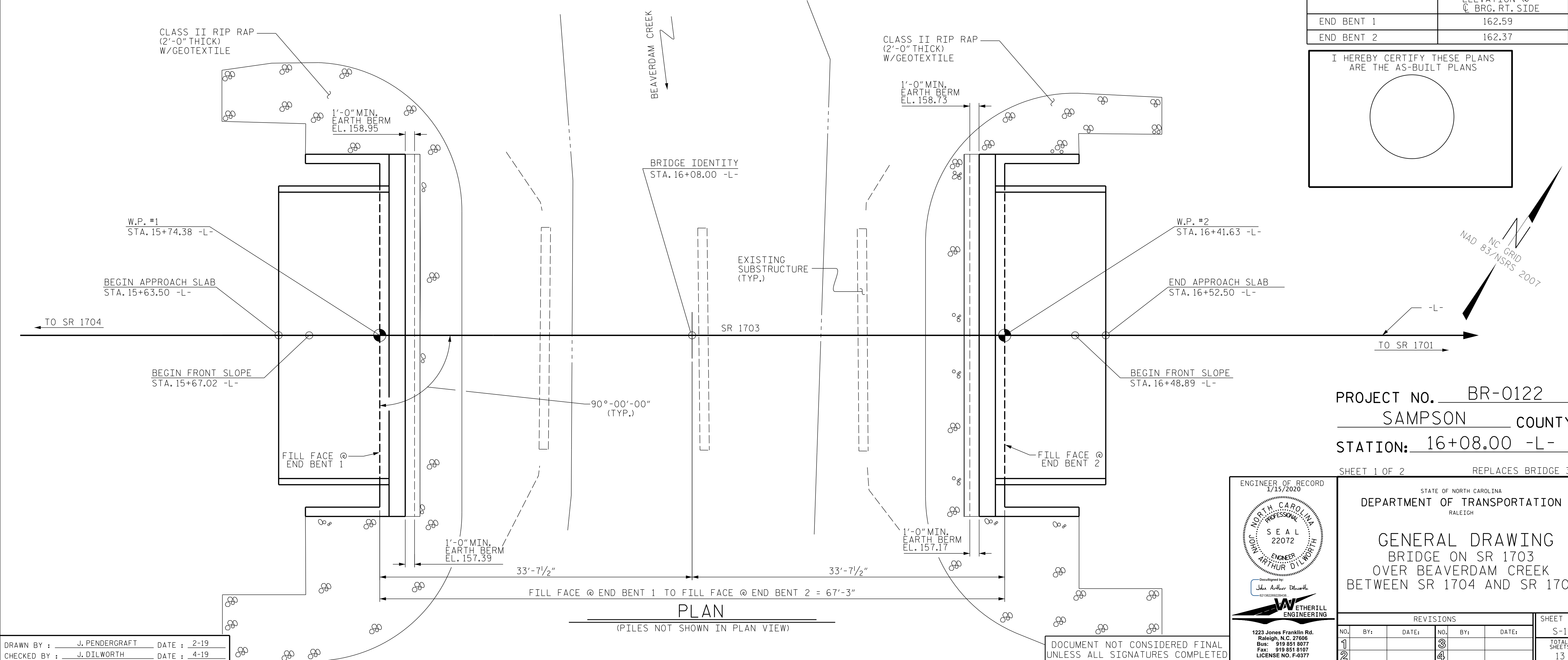
OVERTOPPING DISCHARGE = 900+ C.F.S.
 FREQUENCY OF OVERTOPPING FLOOD = 500+ YRS.
 OVERTOPPING FLOOD ELEVATION = 165.7 *

* OT OCCURS @ HIGH SIDE SUPER EL.
 -L- STA. 19+99.5, EL. = 165.7

LOW CHORD ELEVATIONS

	ELEVATION @ C. BRG. RT. SIDE
END BENT 1	162.59
END BENT 2	162.37

I HEREBY CERTIFY THESE PLANS ARE THE AS-BUILT PLANS



PROJECT NO. BR-0122
 SAMPSON COUNTY
 STATION: 16+08.00 -L-
 SHEET 1 OF 2 REPLACES BRIDGE 348

ENGINEER OF RECORD
 1/15/2020

NORTH CAROLINA PROFESSIONAL ENGINEER
 SEAL 22072
 JOHN ARTHUR DILWORTH

Designed by
 John Arthur Dilworth
 ETHERILL ENGINEERING

1223 Jones Franklin Rd.
 Raleigh, N.C. 27606
 Bus: 919 851 8077
 Fax: 919 851 8107
 LICENSE NO. F-0377

STATE OF NORTH CAROLINA
 DEPARTMENT OF TRANSPORTATION
 RALEIGH

**GENERAL DRAWING
 BRIDGE ON SR 1703
 OVER BEAVERDAM CREEK
 BETWEEN SR 1704 AND SR 1701**

REVISIONS						SHEET NO.
NO.	BY:	DATE:	NO.	BY:	DATE:	
1			3			TOTAL SHEETS
2			4			13

DRAWN BY: J. PENDERGRAFT DATE: 2-19
 CHECKED BY: J. DILWORTH DATE: 4-19

DOCUMENT NOT CONSIDERED FINAL
 UNLESS ALL SIGNATURES COMPLETED

P:\2019\19109\01_BR-0122_Structures\DWG\BR0122-SMJ_GDD.dgn
 1/15/2020 10:46:38 AM