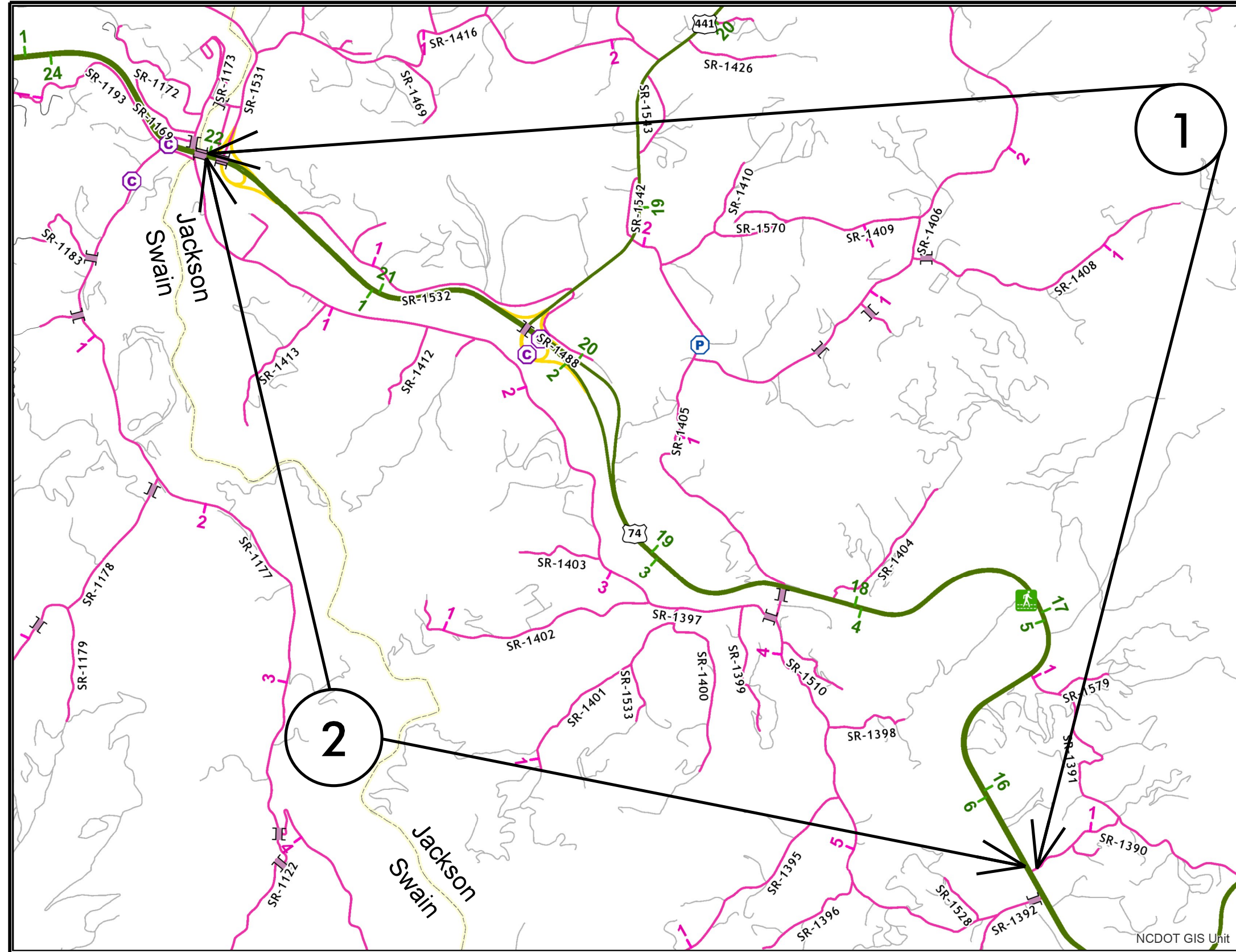


PROJECT REFERENCE NO.		SHEET NO.
2021CPT.14.06.10501		1
STATE PROJECT	F.A. PROJECT NO.	DESCRIPTION
2021CPT.14.06.10501		CONSTRUCTION

# JACKSON COUNTY

**TIP PROJECT: NA**

**CONTRACT:**



**MAP 1**



BEG

END

**MAP 2**



BEG

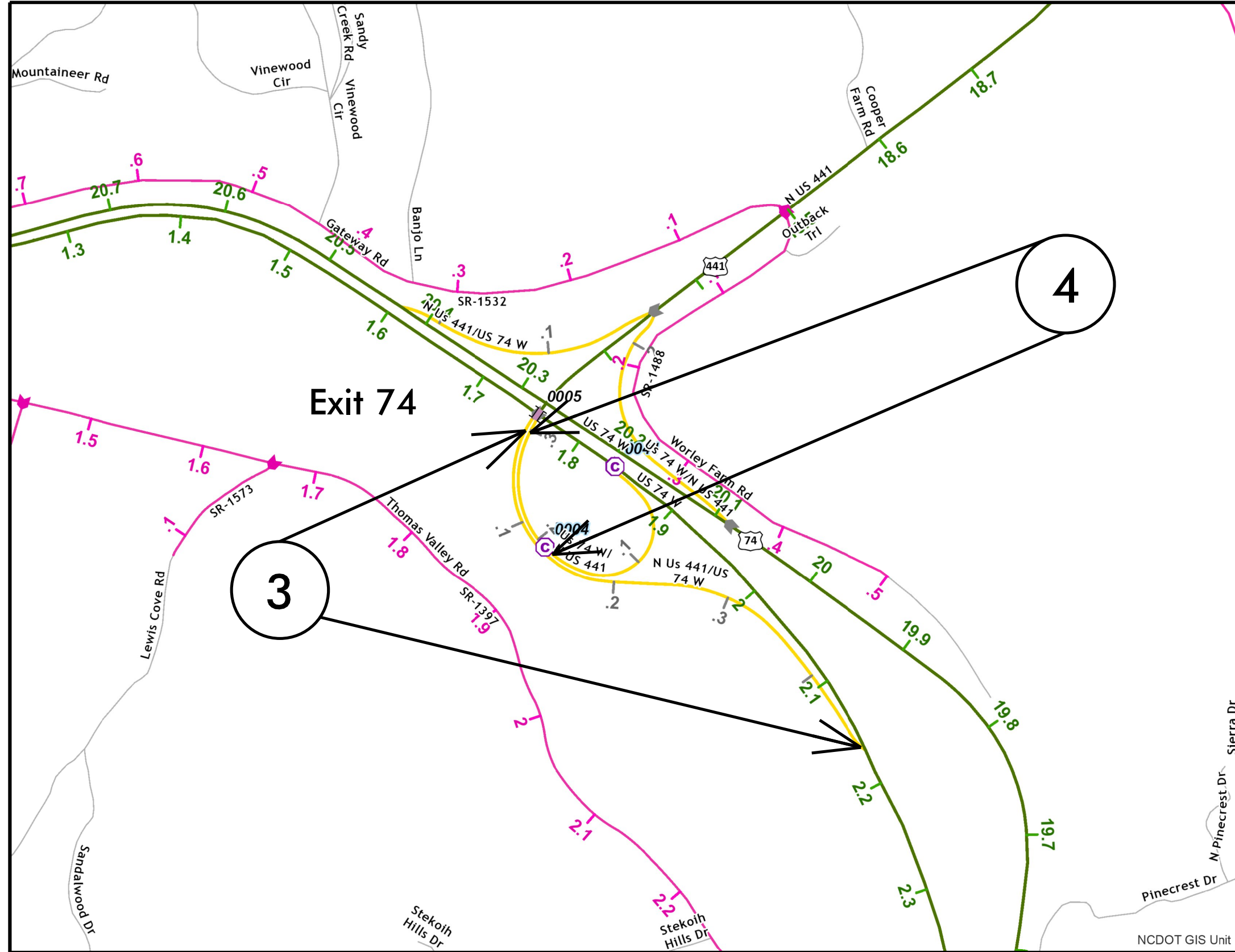
END

PROJECT REFERENCE NO.		SHEET NO.
2021CPT.14.06.10501		2
STATE PROJECT	F.A. PROJECT NO.	DESCRIPTION
2021CPT.14.06.10501		CONSTRUCTION

# JACKSON COUNTY

**TIP PROJECT: N/A**

**CONTRACT:**



**MAP 3**



**BEG**

**END**

**MAP 4**



**BEG**

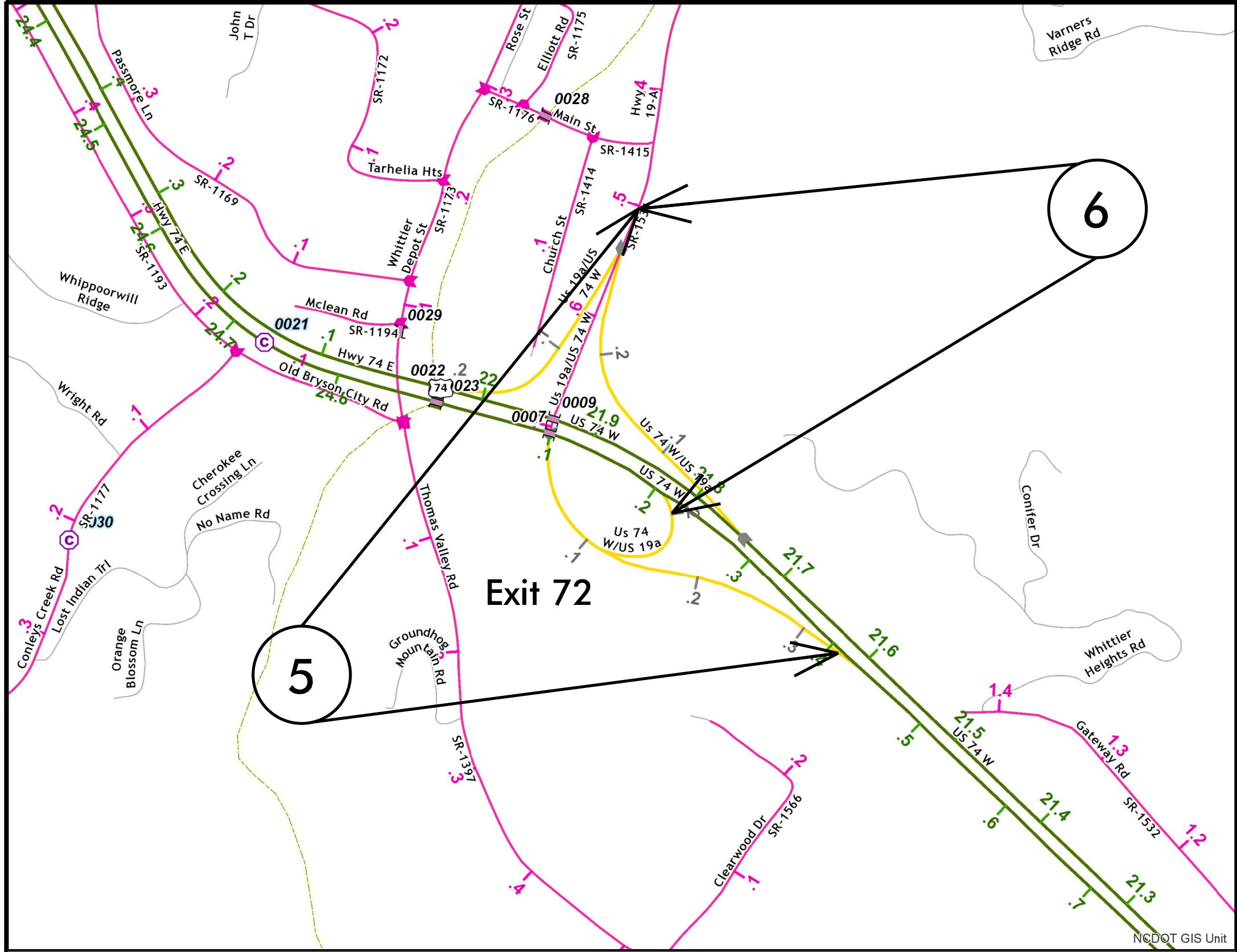
**END**

PROJECT REFERENCE NO.		SHEET NO.
2021CPT.14.06.10501		3
STATE PROJECT	F.A. PROJECT NO.	DESCRIPTION
2021CPT.14.06.10501		CONSTRUCTION

# JACKSON COUNTY

**TIP PROJECT: N/A**

**CONTRACT:**



MAP 5



BEG



END

MAP 6



BEG



END

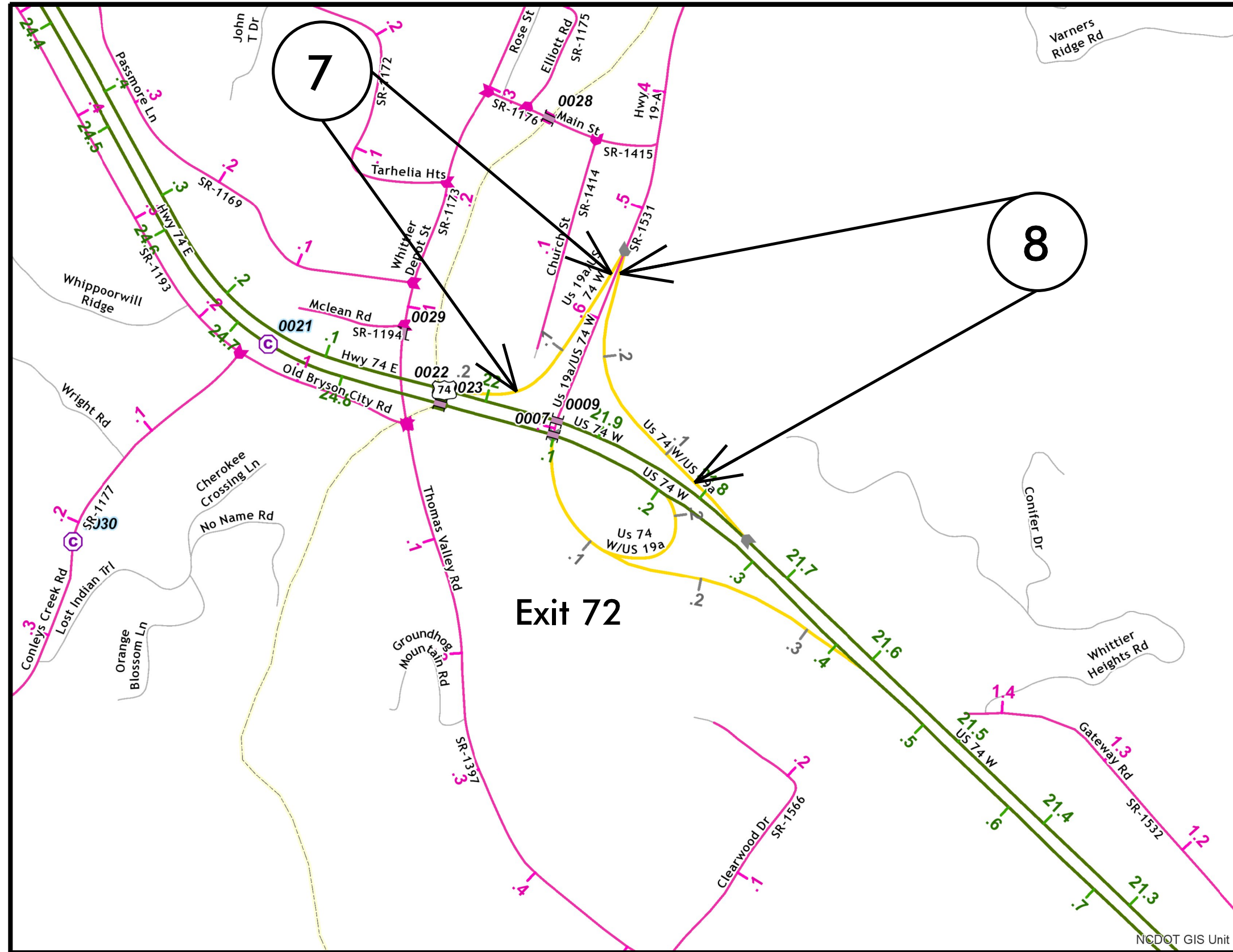
NCDOT GIS Unit

PROJECT REFERENCE NO.		SHEET NO.
2021CPT.14.06.10501		4
STATE PROJECT	F.A. PROJECT NO.	DESCRIPTION
2021CPT.14.06.10501		CONSTRUCTION

# JACKSON COUNTY

**TIP PROJECT: NA**

**CONTRACT:**



**MAP 7**



**BEG**



**END**

**MAP 8**



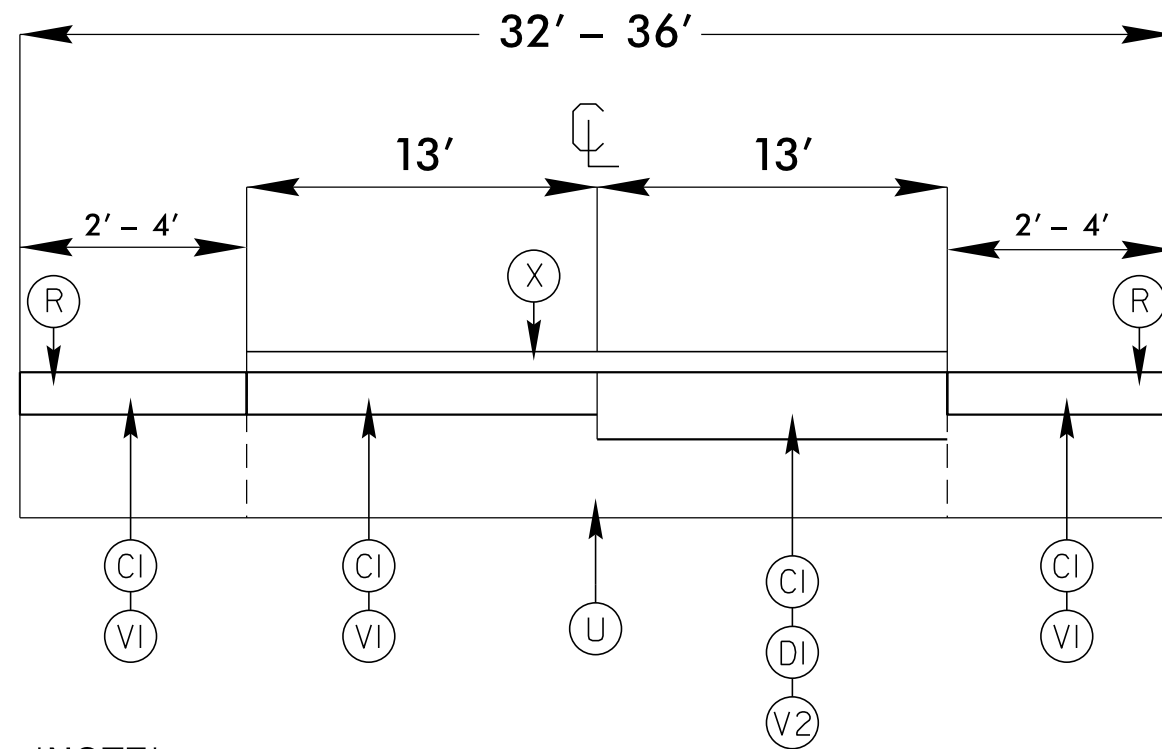
**BEG**



**END**

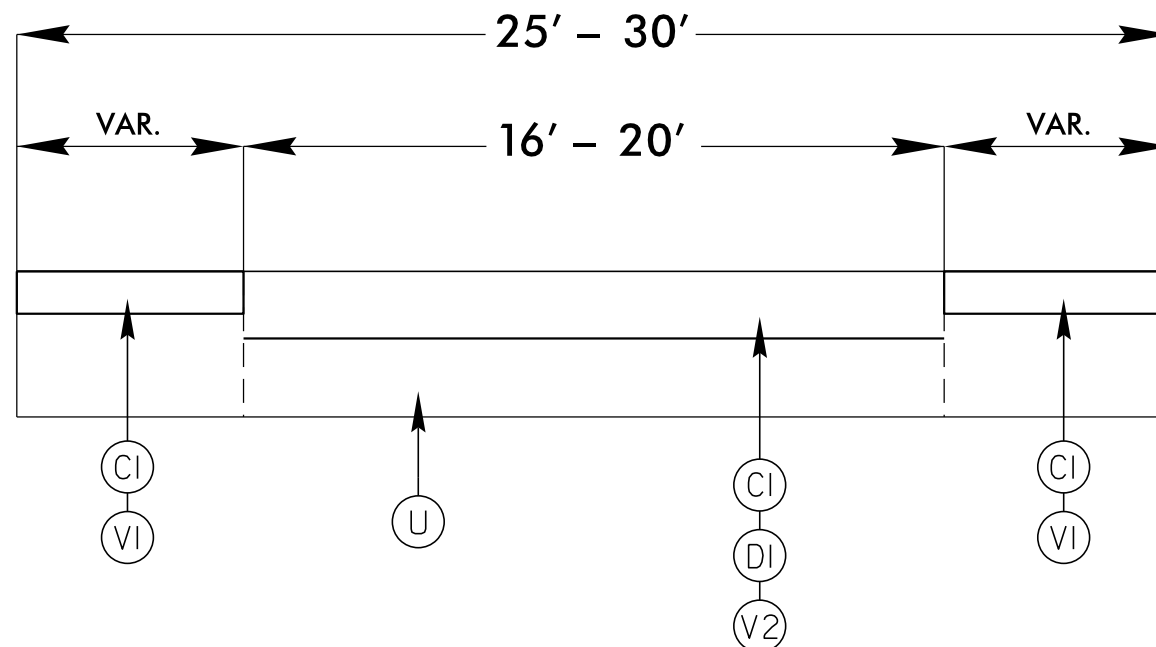
PROJECT REFERENCE NO.		SHEET NO.
2021CPT.14.06.10501		5
STATE PROJECT	F.A. PROJECT NO.	DESCRIPTION
2021CPT.14.06.10501		CONSTRUCTION

## TYPICAL 1



**\*NOTE\***  
QUANTITIES INCLUDE ACCELERATION / DECELERATION LANES.

## TYPICAL 2

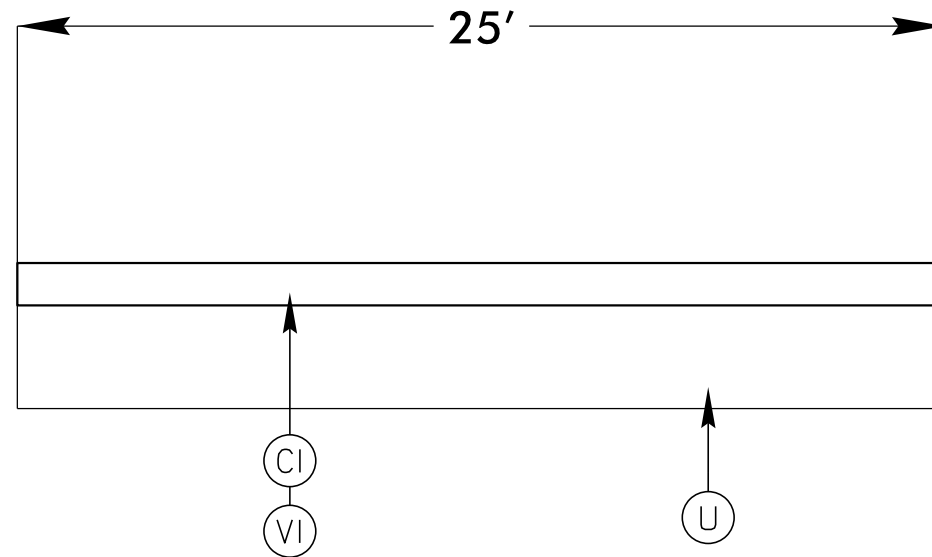


## SURFACING SCHEDULE

ITEM NO.	DESCRIPTION
C1	PROP. APPROX. 1 1/2" ASPHALT CONCRETE SURFACE COURSE, TYPE S9.5C, AT AN AVERAGE RATE OF 168 LBS. PER SQ. YD.
X	PROP. APPROX. 3/4" ASPHALT CONCRETE ULTRA THIN BOND WEAR COURSE, AT AN AVERAGE RATE OF 70 LBS. PER SQ. YD.
R	MILLED RUMBLE STRIPS
D1	PROP. APPROX. 2 1/2" ASPHALT CONCRETE INTERMEDIATE COURSE, TYPE I19.0C, AT AN AVERAGE RATE OF 285 LBS. PER SQ. YD.
U	EXISTING ASPHALT
V1	MILLED ASPHALT PAVEMENT 1 1/2" IN DEPTH IN DISTRESSED AREAS AS DIRECTED BY PROJECT ENGINEER.
V2	MILLED ASPHALT PAVEMENT 4" IN DEPTH IN DISTRESSED AREAS AS DIRECTED BY PROJECT ENGINEER.

PROJECT REFERENCE NO.		SHEET NO.
2021CPT.14.06.10501		6
STATE PROJECT	F.A. PROJECT NO.	DESCRIPTION
2021CPT.14.06.10501		CONSTRUCTION

### TYPICAL 3



### SURFACING SCHEDULE

ITEM NO.	DESCRIPTION
C1	PROP. APPROX. 1 1/2" ASPHALT CONCRETE SURFACE COURSE, TYPE S9.5C, AT AN AVERAGE RATE OF 168 LBS. PER SQ. YD.
X	PROP. APPROX. 3/4" ASPHALT CONCRETE ULTRA THIN BOND WEAR COURSE, AT AN AVERAGE RATE OF 70 LBS. PER SQ. YD.
R	MILLED RUMBLE STRIPS
D1	PROP. APPROX. 2 1/2" ASPHALT CONCRETE INTERMEDIATE COURSE, TYPE I19.0C, AT AN AVERAGE RATE OF 285 LBS. PER SQ. YD.
U	EXISTING ASPHALT
V1	MILLED ASPHALT PAVEMENT 1 1/2" IN DEPTH IN DISTRESSED AREAS AS DIRECTED BY PROJECT ENGINEER.
V2	MILLED ASPHALT PAVEMENT 4" IN DEPTH IN DISTRESSED AREAS AS DIRECTED BY PROJECT ENGINEER.

PROJECT NO.	SHEET NO.
2021CPT.14.06.10501	7

## SUMMARY OF QUANTITIES

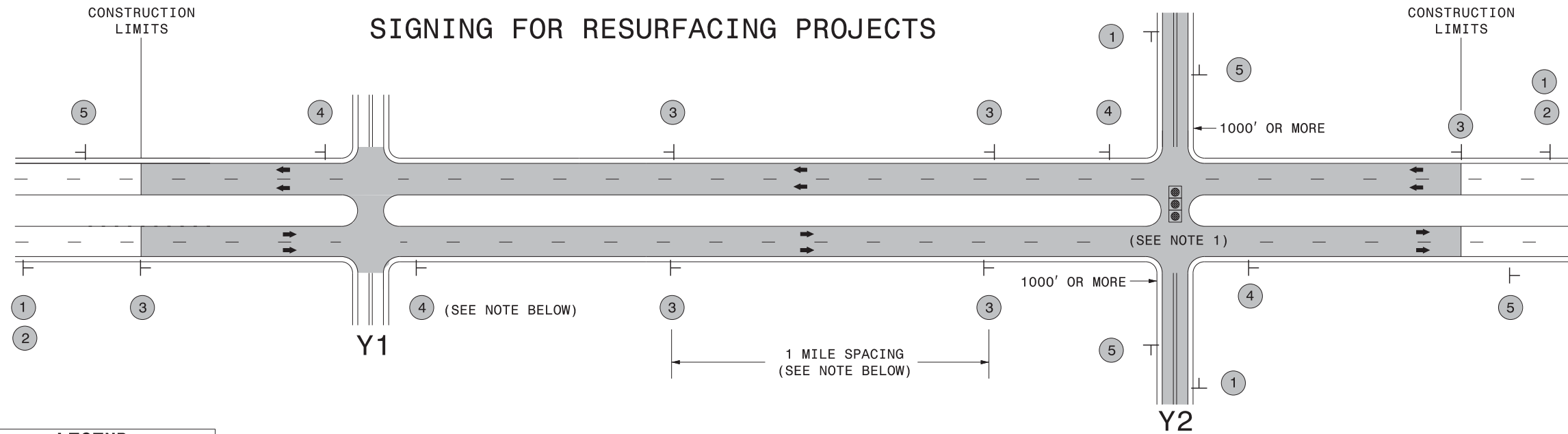
PROJECT NO	COUNTY	MAP NO	ROUTE	DESCRIPTION	TYP NO	LANES	LANE TYPE	FINAL SURFACE TESTING REQUIRED	WARM MIX ASPHALT REQUIRED	LENGTH	WIDTH	0996000000-N	1297000000-E		1503000000-E	1523000000-E	1575000000-E	1577000000-E	1704000000-E	1839140000-E	1840000000-E		
												PIPE CLEAN OUT	1½" MILLING	4" MILLING	INTERMEDIATE COURSE, I19.0C	SURFACE COURSE, S9.5C	ASPHALT BINDER FOR PLANT MIX	POLYMER MODIFIED ASPHALT BINDER FOR PLANT MIX	PATCHING EXISTING PAVEMENT	ULTRA-THIN BONDED WEARING COURSE	MILLED RUMBLE STRIPS (ASPHALT CEMENT CONCRETE)		
											EA	SY	SY	TONS	TONS	TONS	TONS	TONS	TONS	TON	LF		
2021CPT.14.06.10501.1	Jackson	1	US 74/441 WEST	FROM SR-1390 TO SWAIN LINE	1	2	MU	NO	NO	6.4	36	4.00	74,500	48,500	7,000	12,305	1,074	192		3,690	67,584		
<b>TOTAL FOR MAP NO. 1</b>											<b>4.00</b>	<b>74,500</b>	<b>48,500</b>	<b>7,000</b>	<b>12,305</b>	<b>1,074</b>	<b>192</b>		<b>3,690</b>	<b>67,584</b>			
2021CPT.14.06.10501.1	Jackson	2	US 74/441 EAST	FROM SWAIN TO SR-1390	1	2	MU	NO	NO	6.4	36		74,500	48,500	7,000	12,286	1,073	192		3,690	67,584		
<b>TOTAL FOR MAP NO. 2</b>												<b>74,500</b>	<b>48,500</b>	<b>7,000</b>	<b>12,286</b>	<b>1,073</b>	<b>192</b>		<b>3,690</b>	<b>67,584</b>			
2021CPT.14.06.10501.1	Jackson	3	RAMP MP 74	EXIT 74 FROM US 441 TO US 74 EAST	2	2		NO	NO	0.354	25		1,662	3,532	503	436	50						
<b>TOTAL FOR MAP NO. 3</b>												<b>0.354</b>		<b>1,662</b>	<b>3,532</b>	<b>503</b>	<b>436</b>	<b>50</b>					
2021CPT.14.06.10501.1	Jackson	4	RAMP MP 74	EXIT 74 FROM US 74 EAST TO US441 NORTH	3	2		NO	NO	0.104	25		1,525			128	8						
<b>TOTAL FOR MAP NO. 4</b>												<b>0.104</b>		<b>1,525</b>			<b>128</b>	<b>8</b>					
2021CPT.14.06.10501.1	Jackson	5	RAMP MP 72	EXIT 72 FROM SR-1531 TO US 74 EAST	2	2		NO	NO	0.54	27		2,533	5,383	767	718	80						
<b>TOTAL FOR MAP NO. 5</b>												<b>0.54</b>		<b>2,533</b>	<b>5,383</b>	<b>767</b>	<b>718</b>	<b>80</b>					
2021CPT.14.06.10501.1	Jackson	6	RAMP MP 72	EXIT 72 FROM US 74 EAST TO SR-1531	2	2		NO	NO	0.337	25		1,582	3,362	479	415	48		60				
<b>TOTAL FOR MAP NO. 6</b>												<b>0.337</b>		<b>1,582</b>	<b>3,362</b>	<b>479</b>	<b>415</b>	<b>48</b>		<b>60</b>			
2021CPT.14.06.10501.1	Jackson	7	RAMP MP 72	EXIT 72 FROM SR-1531 TO US 74 WEST	2	2		NO	NO	0.142	30		1,083	1,417	202	210	22						
<b>TOTAL FOR MAP NO. 7</b>												<b>0.142</b>		<b>1,083</b>	<b>1,417</b>	<b>202</b>	<b>210</b>	<b>22</b>					
2021CPT.14.06.10501.1	Jackson	8	RAMP MP 72	EXIT 72 FROM US 74 WEST TO SR-1531	2	2		NO	NO	0.256	28		1,200	2,550	363	353	39						
<b>TOTAL FOR MAP NO. 8</b>												<b>0.256</b>		<b>1,200</b>	<b>2,550</b>	<b>363</b>	<b>353</b>	<b>39</b>					
<b>TOTAL FOR PROJ NO. 2021CPT.14.06.10501.1</b>												<b>14.533</b>		<b>4.00</b>	<b>158,585</b>	<b>113,244</b>	<b>16,314</b>	<b>26,851</b>	<b>2,394</b>	<b>384</b>	<b>60</b>	<b>7,380</b>	<b>135,168</b>
<b>GRAND TOTAL</b>												<b>14.533</b>		<b>4.00</b>	<b>158,585</b>	<b>113,244</b>	<b>16,314</b>	<b>26,851</b>	<b>2,394</b>	<b>384</b>	<b>60</b>	<b>7,380</b>	<b>135,168</b>

PROJECT NO.	SHEET NO.
2021CPT.14.06.10501	8

**THERMOPLASTIC AND PAINT QUANTITIES**

PROJECT NO	COUNTY	MAP NO	ROUTE	DESCRIPTION	TYP NO	LANES	LANE TYPE	LENGTH	WIDTH	4413000000-E	4457000000-N	4695000000-E	4725000000-E			4810000000-E		4890000000-E		4895000000-N	
								MI	FT	SF	LS	LF	EA	EA	EA	LF	LF	LF	LF	EA	
2021CPT.14.06.10501.1	Jackson	1	US 74/441 WEST	FROM SR-1390 TO SWAIN LINE	1	2	MU	6.4	36	358	*	5,000	18	3		72,400	72,400	42,200	42,200	460	
<b>TOTAL FOR MAP NO. 1</b>								<b>6.4</b>		<b>358</b>	<b>1</b>	<b>5,000</b>	<b>18</b>	<b>3</b>		<b>72,400</b>	<b>72,400</b>	<b>42,200</b>	<b>42,200</b>	<b>460</b>	
2021CPT.14.06.10501.1	Jackson	2	US 74/441 EAST	FROM SWAIN TO SR-1390	1	2	MU	6.4	36	358			18	3		72,400	72,400	42,200	42,200	460	
<b>TOTAL FOR MAP NO. 2</b>								<b>6.4</b>		<b>358</b>			<b>18</b>	<b>3</b>		<b>72,400</b>	<b>72,400</b>	<b>42,200</b>	<b>42,200</b>	<b>460</b>	
2021CPT.14.06.10501.1	Jackson	3	RAMP MP 74	EXIT 74 FROM US 441 TO US 74 EAST	2	2		0.354	25	32								1,869	1,869	12	
<b>TOTAL FOR MAP NO. 3</b>								<b>0.354</b>		<b>32</b>									<b>1,869</b>	<b>1,869</b>	<b>12</b>
2021CPT.14.06.10501.1	Jackson	4	RAMP MP 74	EXIT 74 FROM US 74 EAST TO US441 NORTH	3	2		0.104	25	16					1			550	550	12	
<b>TOTAL FOR MAP NO. 4</b>								<b>0.104</b>		<b>16</b>				<b>1</b>			<b>550</b>	<b>550</b>	<b>12</b>		
2021CPT.14.06.10501.1	Jackson	5	RAMP MP 72	EXIT 72 FROM SR-1531 TO US 74 EAST	2	2		0.54	27	32								2,581	2,581	12	
<b>TOTAL FOR MAP NO. 5</b>								<b>0.54</b>		<b>32</b>								<b>2,581</b>	<b>2,581</b>	<b>12</b>	
2021CPT.14.06.10501.1	Jackson	6	RAMP MP 72	EXIT 72 FROM US 74 EAST TO SR-1531	2	2		0.337	25	16					1			1,780	1,780	12	
<b>TOTAL FOR MAP NO. 6</b>								<b>0.337</b>		<b>16</b>				<b>1</b>			<b>1,780</b>	<b>1,780</b>	<b>12</b>		
2021CPT.14.06.10501.1	Jackson	7	RAMP MP 72	EXIT 72 FROM SR-1531 TO US 74 WEST	2	2		0.142	30	32								750	750	12	
<b>TOTAL FOR MAP NO. 7</b>								<b>0.142</b>		<b>32</b>									<b>750</b>	<b>750</b>	<b>12</b>
2021CPT.14.06.10501.1	Jackson	8	RAMP MP 72	EXIT 72 FROM US 74 WEST TO SR-1531	2	2		0.256	28	16					1			1,350	1,350	12	
<b>TOTAL FOR MAP NO. 8</b>								<b>0.256</b>		<b>16</b>				<b>1</b>			<b>1,350</b>	<b>1,350</b>	<b>12</b>		
<b>TOTAL FOR PROJ NO. 2021CPT.14.06.10501.1</b>								<b>14.533</b>		<b>860</b>	<b>1</b>	<b>5,000</b>	<b>36</b>	<b>6</b>	<b>3</b>	<b>144,800</b>	<b>144,800</b>	<b>93,280</b>	<b>93,280</b>	<b>992</b>	
													<b>45</b>			<b>289,600</b>		<b>186,560</b>			
<b>GRAND TOTAL</b>								<b>14.533</b>		<b>860</b>	<b>1</b>	<b>5,000</b>	<b>36</b>	<b>6</b>	<b>3</b>	<b>144,800</b>	<b>144,800</b>	<b>93,280</b>	<b>93,280</b>	<b>992</b>	
													<b>45</b>			<b>289,600</b>		<b>186,560</b>			





LEGEND	
┆	STATIONARY SIGN
←	DIRECTION OF TRAFFIC FLOW

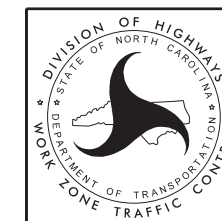
### MAINLINE (-L-) SIGNING

### -Y- LINE SIGNING

SIGNING NOTES AND PLACEMENT PER DIRECTION	MAINLINE (-L-) SIGNING		-Y- LINE SIGNING	
	1	 W20-1 48" X 48"	PLACE 1000' PRIOR TO BEGINNING OF CONSTRUCTION LIMITS. ONLY USED ON -Y- LINES IF RESURFACING LIMITS EXTEND 1000' ALONG -Y- LINE.	<p>NO REQUIRED STATIONARY SIGNING FOR THE FOLLOWING -Y- LINE CONDITIONS:</p> <ol style="list-style-type: none"> <li>1) LESS THAN 1000' OF RESURFACING ALONG -Y- LINE</li> <li>2) SUBDIVISION ROADS</li> <li>3) DEAD END ROADS</li> </ol> <p>WHEN PAVING/CONSTRUCTION ACTIVITIES PROCEED ACROSS AN UNSIGNED -Y- LINE, ADVANCE WARNING PORTABLE SIGNS SHALL BE USED ALONG THE -Y- LINE AS SHOWN BELOW. REMOVE UPON COMPLETION OF WORK.</p> <div style="display: flex; justify-content: space-around;"> <div>             W20-1            48" X 48"         </div> <div>             W20-7 A            48" X 48"         </div> </div> <p>PLACED 500' IN ADVANCE OF FLAGGER. PLACED 250' IN ADVANCE OF FLAGGER.</p>
	2	 W7-3aP 24" X 18"	#2 SIGN ONLY USED WHEN RESURFACING LIMITS ARE 2 OR MORE MILES IN LENGTH. ROUND UP TO NEXT WHOLE NUMBER. (NO FRACTIONAL OR DECIMAL NUMBERS)	
	3	 SP 13107 48" X 48"	PLACE INITIALLY AT THE CONSTRUCTION LIMITS AND SPACED 1 MILE APART THEREAFTER. IF NO -Y- LINES EXIST, PLACE 2ND SET 1/2 MILE FROM THE CONSTRUCTION LIMITS AND THEN SPACE 1 MILE THEREAFTER.	
	4	 SP 13106 48" X 48"	THESE ARE FOR -Y- LINES THAT ARE "THROUGH" ROADWAYS. DEAD END AND SUBDIVISION ROADS ARE NOT "THROUGH" ROADWAYS. INSTALL 500' +/- FROM EACH -Y- LINE APPROACH AS SHOWN ABOVE. FOR MULTIPLE -Y- LINES THAT ARE SEPARATED BY 0.25 MILES OR LESS, TREAT AS A SINGLE UNIT AND INSTALL WITHIN 500' OF EACH APPROACH. A MAXIMUM OF 2 SIGN SETS PER MILE. DO NOT INSTALL WHEN -Y- LINES ARE WITHIN 0.5 MILES FROM "END ROAD WORK" SIGN.	
5	 G20-2 A 48" X 24"	PLACE 500' FOLLOWING THE END OF CONSTRUCTION LIMITS.		

#### NOTES:

- 1) MAY USE LAW ENFORCEMENT TO CONTROL TRAFFIC AT SIGNALIZED INTERSECTIONS AS DIRECTED BY THE ENGINEER. PROVIDE PORTABLE "ROAD WORK AHEAD" (W20-1) SIGNS 500' IN ADVANCE ALONG BOTH APPROACHES FROM THE SIDE STREETS WHEN PAVING PROCEEDS THROUGH THE INTERSECTION.



RESURFACING  
ADVANCE WARNING SIGNS  
FOR RURAL AND SUBURBAN  
MULTI-LANE ROADWAYS  
W/ SHOULDER SECTIONS