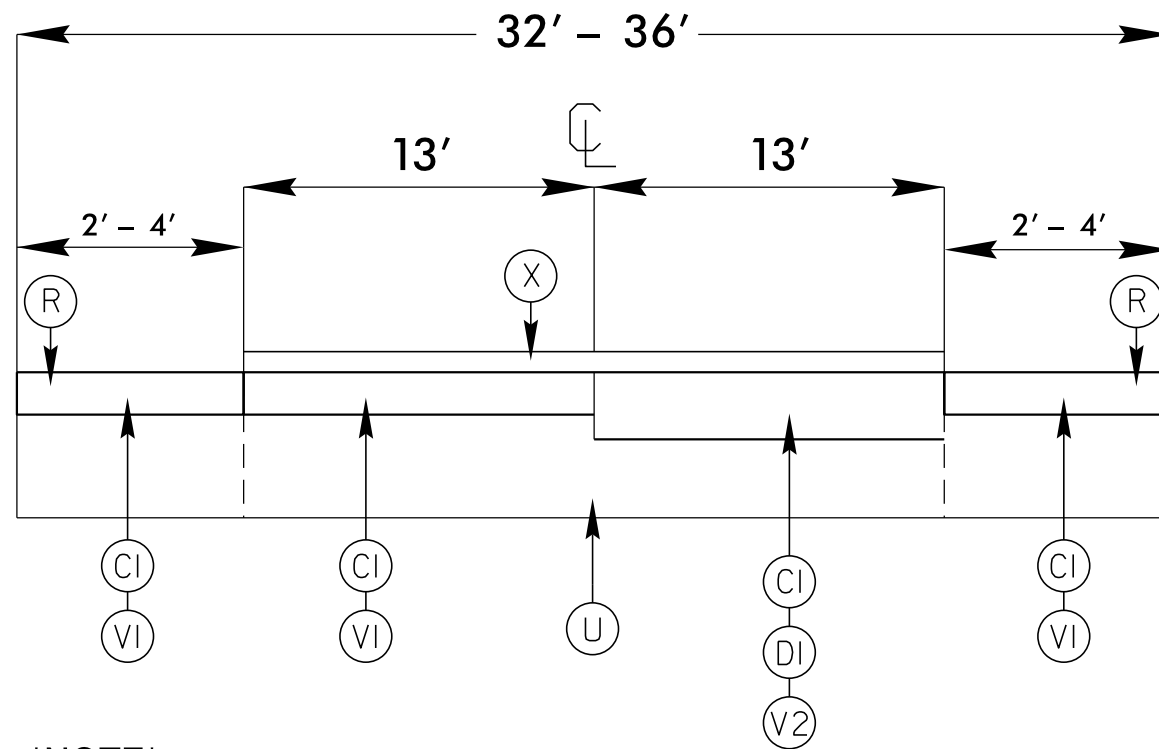
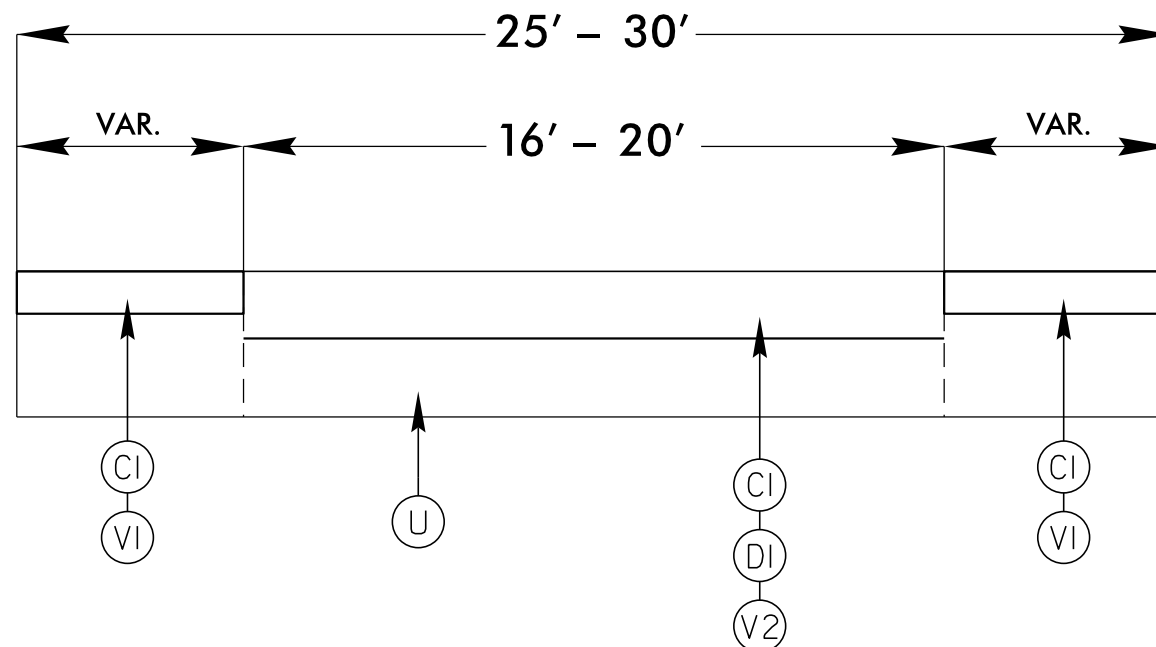


TYPICAL 1



NOTE
QUANTITIES INCLUDE ACCELERATION / DECELERATION LANES.

TYPICAL 2



SURFACING SCHEDULE

ITEM NO.	DESCRIPTION
C1	PROP. APPROX. 1 1/2" ASPHALT CONCRETE SURFACE COURSE, TYPE S9.5C, AT AN AVERAGE RATE OF 168 LBS. PER SQ. YD.
X	PROP. APPROX. 3/4" ASPHALT CONCRETE ULTRA THIN BOND WEAR COURSE, AT AN AVERAGE RATE OF 70 LBS. PER SQ. YD.
R	MILLED RUMBLE STRIPS
D1	PROP. APPROX. 2 1/2" ASPHALT CONCRETE INTERMEDIATE COURSE, TYPE I19.0C, AT AN AVERAGE RATE OF 285 LBS. PER SQ. YD.
U	EXISTING ASPHALT
V1	MILLED ASPHALT PAVEMENT 1 1/2" IN DEPTH IN DISTRESSED AREAS AS DIRECTED BY PROJECT ENGINEER.
V2	MILLED ASPHALT PAVEMENT 4" IN DEPTH IN DISTRESSED AREAS AS DIRECTED BY PROJECT ENGINEER.