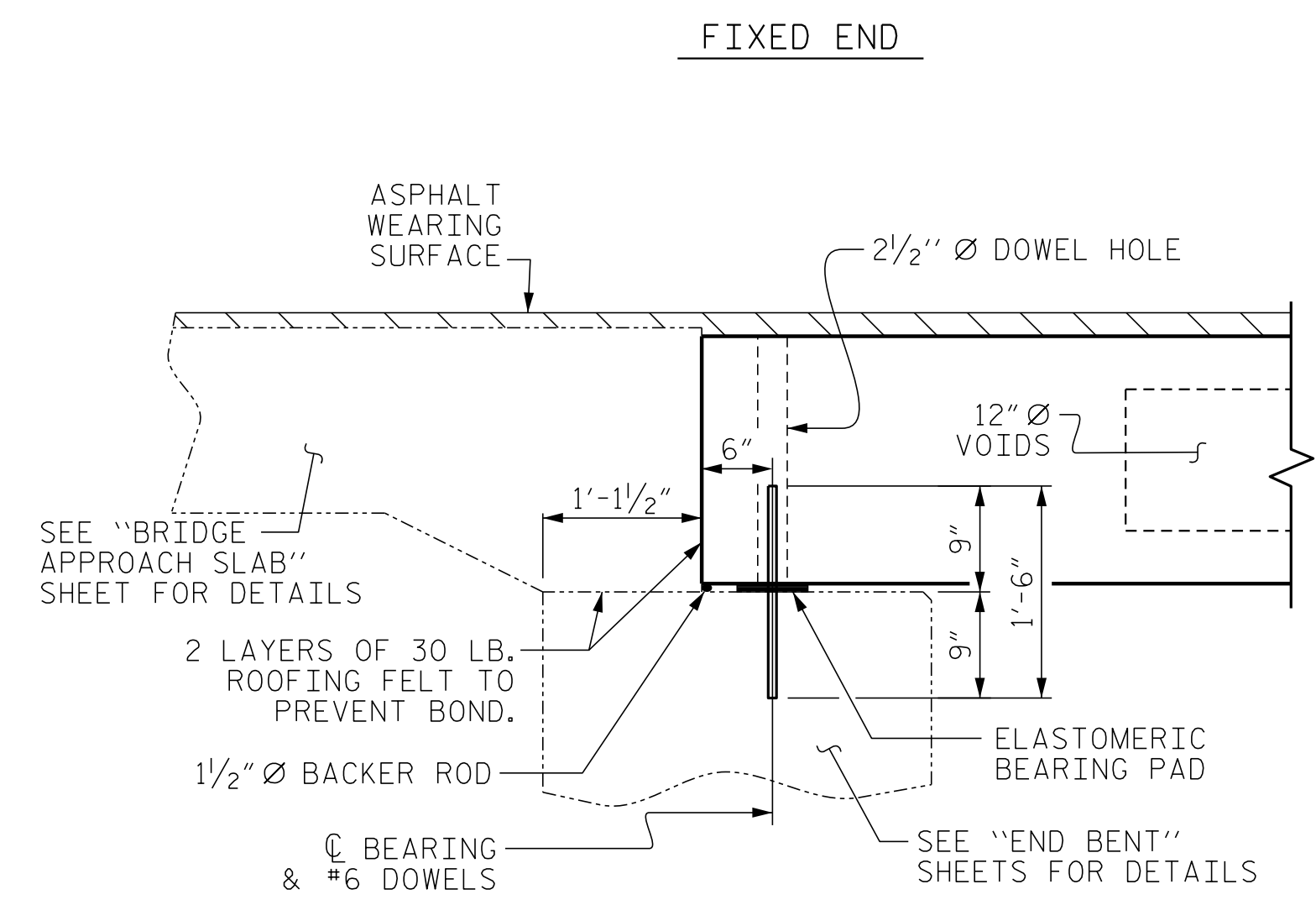
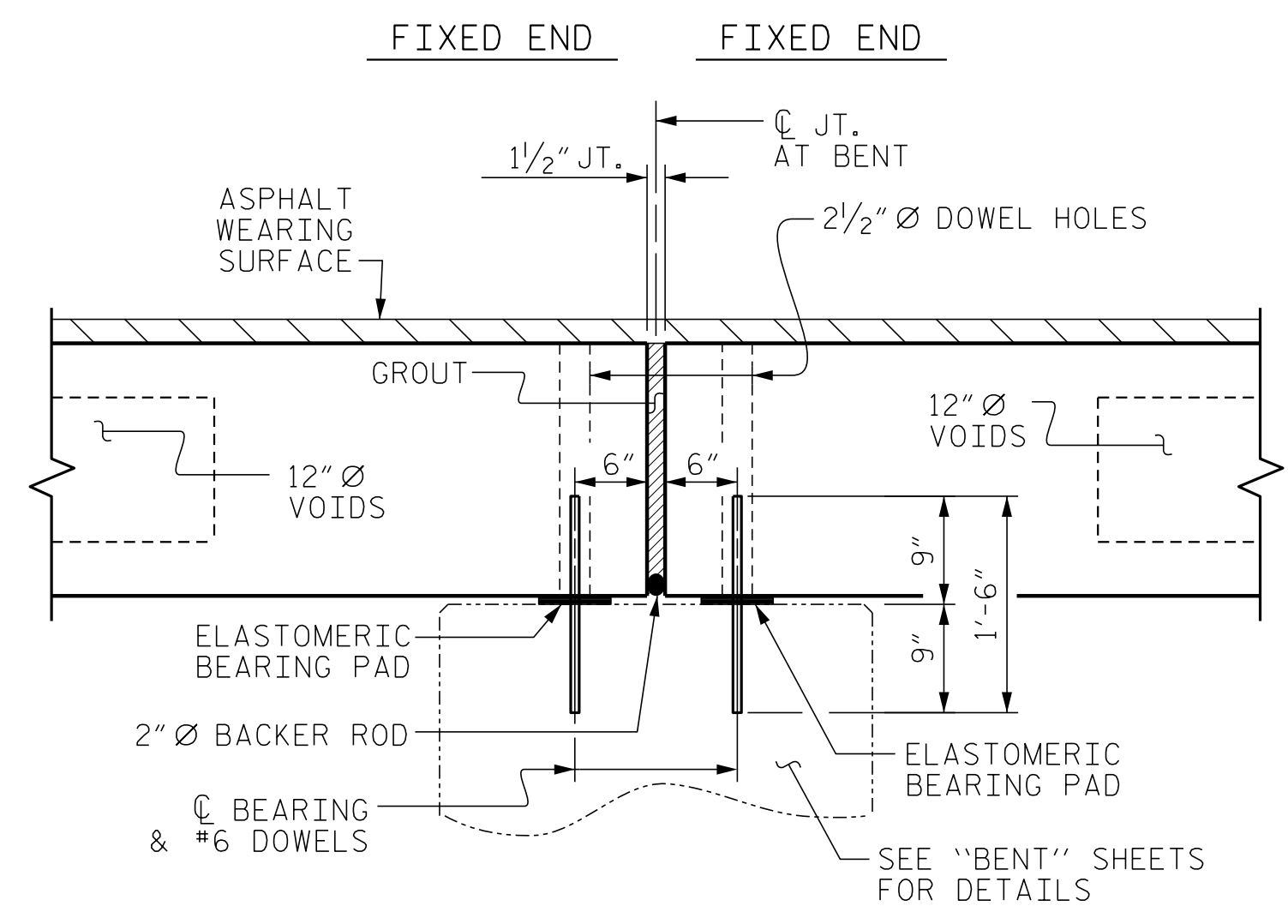


HALF SECTION AT INTERMEDIATE DIAPHRAGMS  
 HALF SECTION THROUGH VOIDS  
**TYPICAL SECTION**

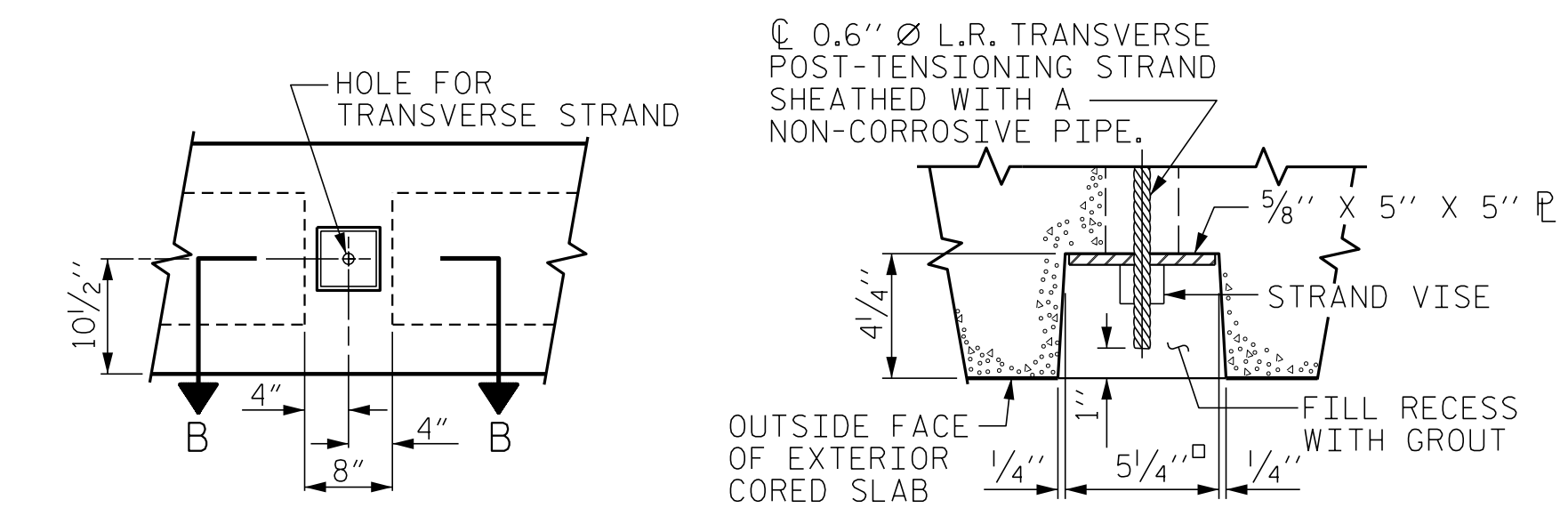
\* - THE MAXIMUM BARRIER RAIL HEIGHT AND ASPHALT THICKNESS IS SHOWN. THE HEIGHT OF THE BARRIER RAIL AND ASPHALT THICKNESS VARIES WHILE THE TOP OF THE BARRIER RAIL FOLLOWS THE PROFILE OF THE GUTTERLINE. FOR RAIL HEIGHT DETAILS AND ASPHALT THICKNESS SEE THE "VERTICAL CONCRETE BARRIER RAIL SECTION" DETAIL.



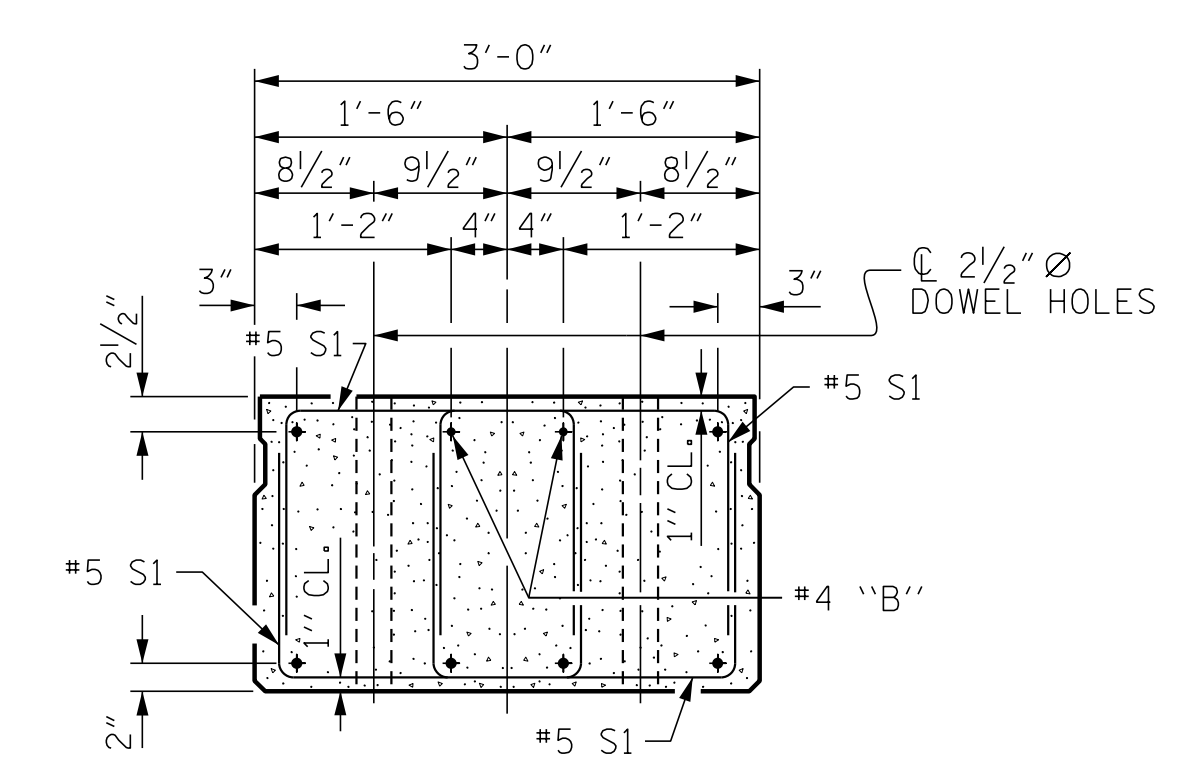
**SECTION AT END BENT**



**SECTION AT BENT**

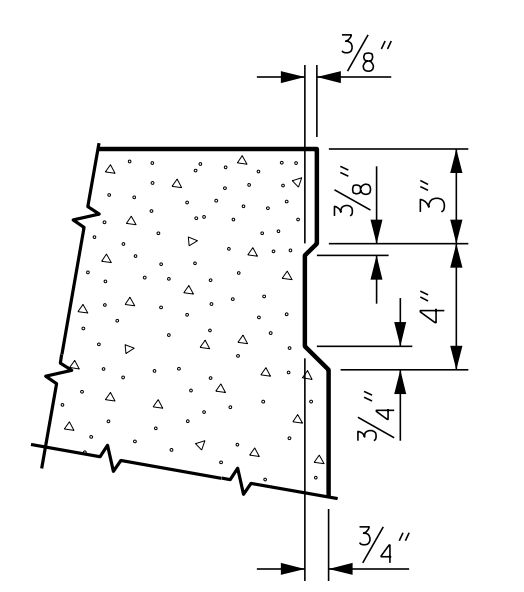


**GROUTED RECESS AT END OF POST-TENSIONED STRAND OF CORED SLABS**



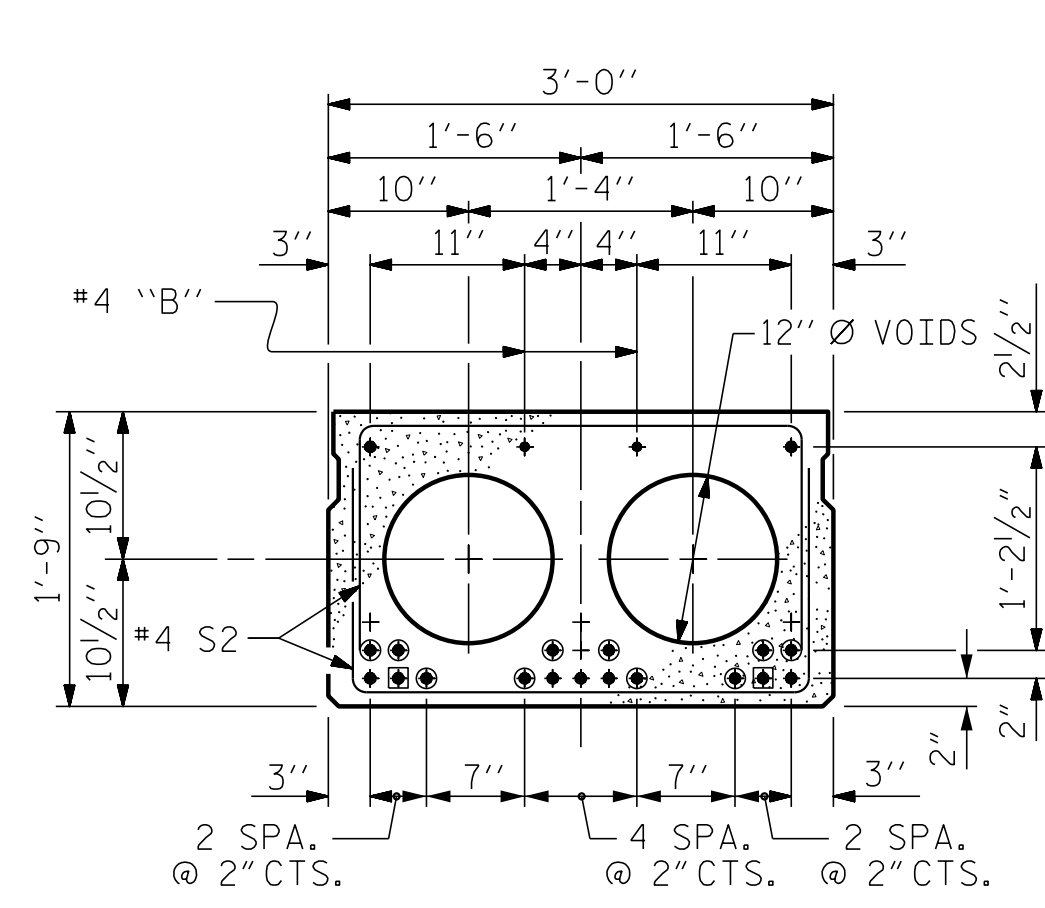
**END ELEVATION**

SHOWING PLACEMENT OF DOUBLE STIRRUPS AND LOCATION OF DOWEL HOLES. (STRAND LAYOUT NOT SHOWN.) INTERIOR SLAB UNIT SHOWN-EXTERIOR SLAB UNIT SIMILAR EXCEPT SHEAR KEY LOCATION.

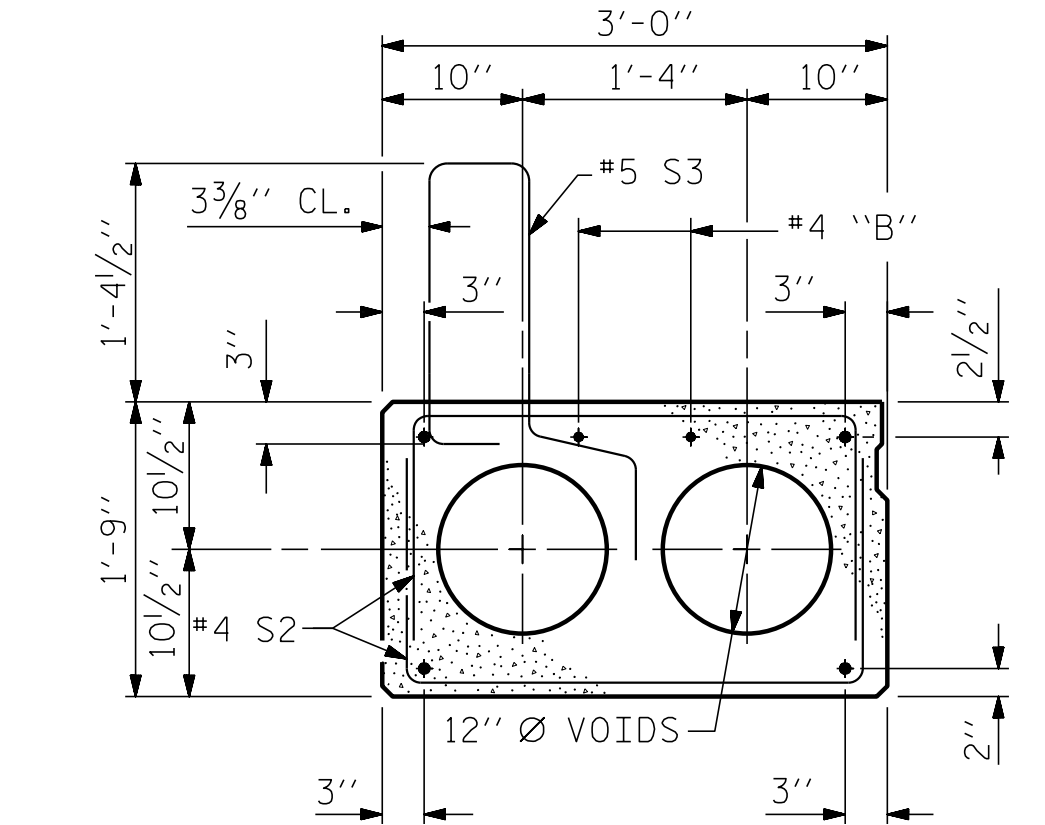


**SHEAR KEY DETAIL**

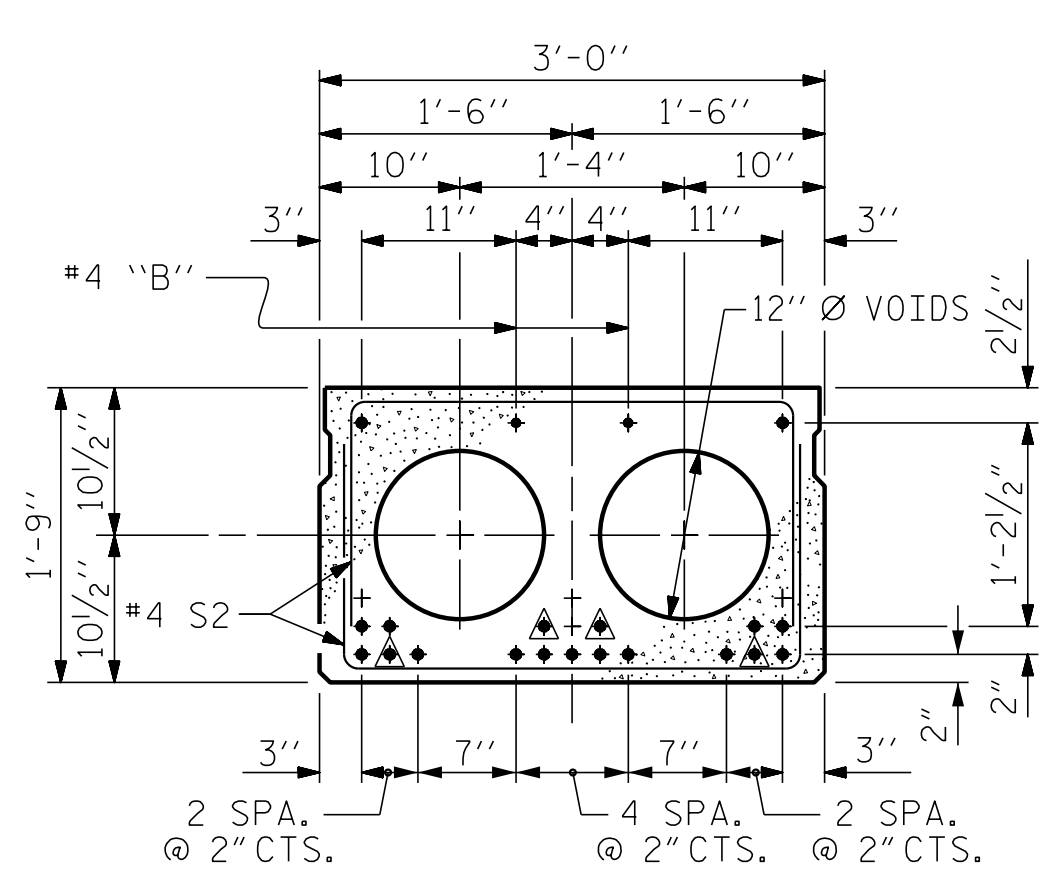
NOTE: OMIT SHEAR KEY ON OUTSIDE FACE OF EXTERIOR CORED SLABS.



**INTERIOR SLAB SECTION (35' UNIT)**  
(9 STRANDS REQUIRED)



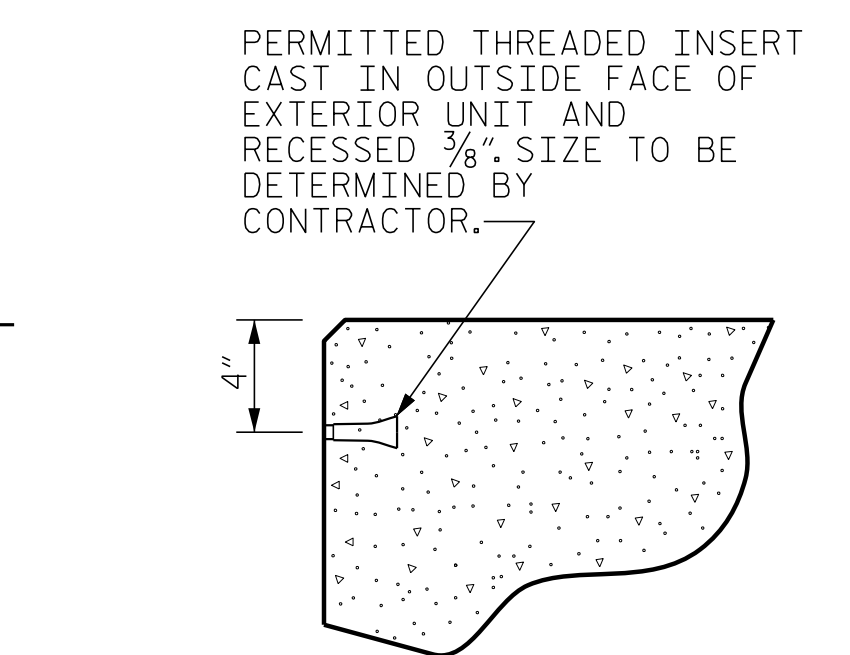
**EXT. SLAB SECTION**  
(FOR PRESTRESSED STRAND LAYOUT, SEE INTERIOR SLAB SECTION.)



**INTERIOR SLAB SECTION (55' UNIT)**  
(19 STRANDS REQUIRED)

**0.6" Ø LOW RELAXATION STRAND LAYOUT**

- DEBONDING LEGEND**
- ▲ BOND SHALL BE BROKEN ON THESE STRANDS FOR A DISTANCE OF 6'-0" FROM END OF CORED SLAB UNIT. SEE STANDARD SPECIFICATIONS, ARTICLE 1078-7.
  - BOND SHALL BE BROKEN ON THESE STRANDS FOR A DISTANCE OF 2'-0" FROM END OF CORED SLAB UNIT. SEE STANDARD SPECIFICATIONS, ARTICLE 1078-7.
  - OPTIONAL FULL LENGTH DEBONDED STRANDS. THESE STRANDS ARE NOT REQUIRED. IF THE FABRICATOR CHOOSES TO INCLUDE THESE STRANDS IN THE CORED SLAB UNIT, THE STRANDS SHALL BE DEBONDED FOR THE FULL LENGTH OF THE UNIT AT NO ADDITIONAL COST. SEE STANDARD SPECIFICATIONS, ARTICLE 1078-7.



**THREADED INSERT DETAIL**

PROJECT NO. BR-0113  
 HALIFAX COUNTY  
 STATION: 16+10.00 -L-  
 SHEET 1 OF 5

ENGINEER OF RECORD  
 4/29/2020  
  
 ENGINEER ARTHUR DILLWORTH  
 1223 Jones Franklin Rd.  
 Raleigh, N.C. 27606  
 Bus: 919 851 8077  
 Fax: 919 851 8107  
 LICENSE NO. F-0377

STATE OF NORTH CAROLINA DEPARTMENT OF TRANSPORTATION RALEIGH					
STANDARD 3'-0" X 1'-9" PRESTRESSED CONCRETE CORED SLAB UNIT 90° SKEW					
REVISIONS					
NO.	BY:	DATE:	NO.	BY:	DATE:
1			3		
2			4		
SHEET NO.					S-5
TOTAL SHEETS					18

ASSEMBLED BY : J. PENDERGRAFT	DATE : 3-19
CHECKED BY : J. DILWORTH	DATE : 8-19
DRAWN BY : DGE	5/09
CHECKED BY : BCH	6/09
REV. 9/14	MAA/TMG

DOCUMENT NOT CONSIDERED FINAL UNLESS ALL SIGNATURES COMPLETED

P:\2019\19106.01 BR-0113\Structures\03\NB\BR0113\_SMU\_T.S.dgn  
 10/2/2019 8:24:07 AM