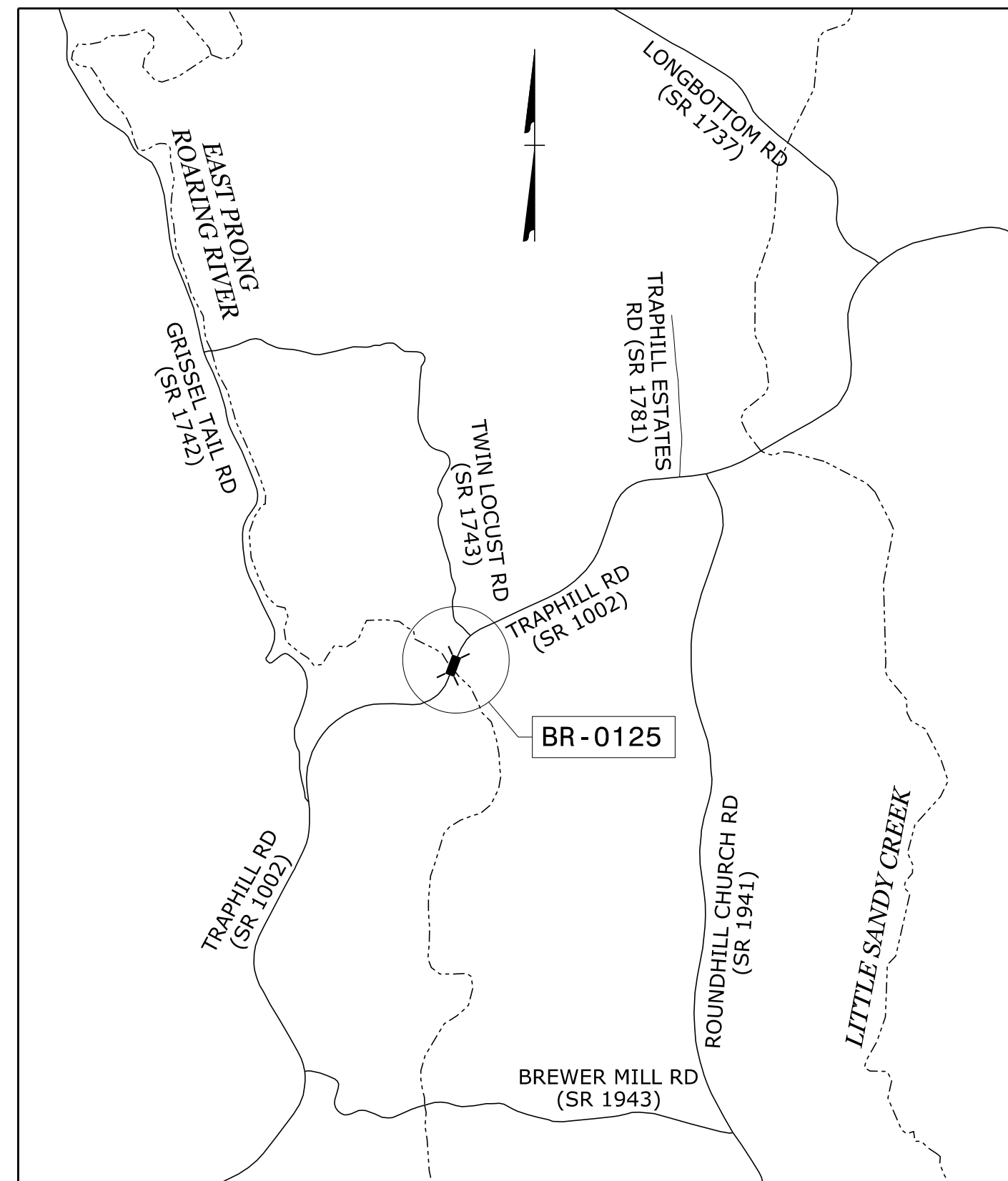
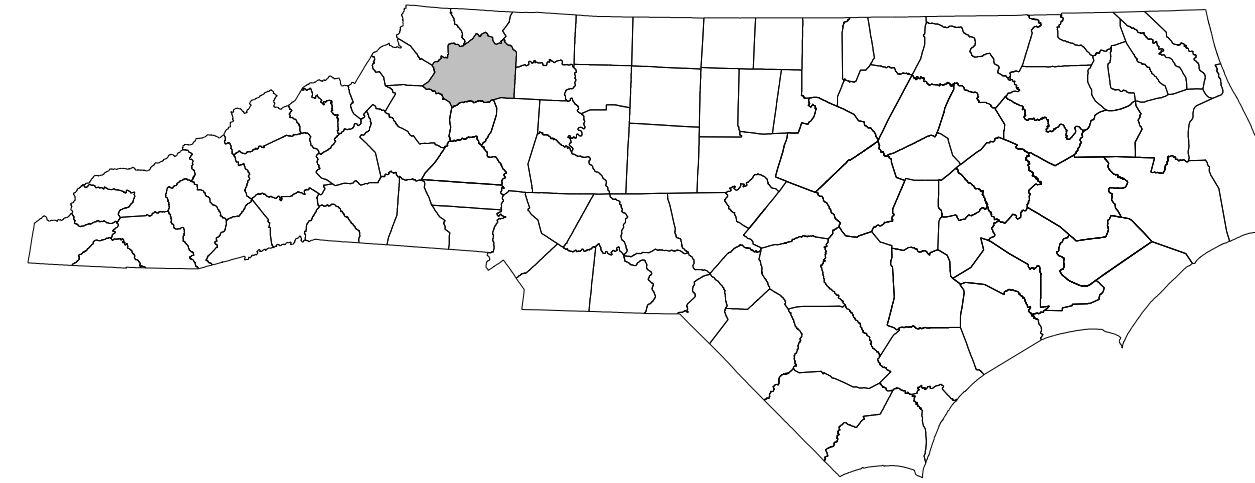


STATE OF NORTH CAROLINA  
DIVISION OF HIGHWAYS

**TRANSPORTATION MANAGEMENT PLAN**

**WILKES COUNTY**



LOCATION - BRIDGE NO 663 OVER EAST PRONG ROARING RIVER ON SR 1002 (TRAPHILL RD)

TYPE OF WORK - GRADING, DRAINAGE, PAVING AND STRUCTURE

**INDEX OF SHEETS**

SHEET NO.	TITLE
TMP-1	TITLE SHEET, VICINITY MAP, AND INDEX OF SHEETS
TMP-1A	LIST OF APPLICABLE ROADWAY STANDARD DRAWINGS, LEGEND AND MANAGEMENT STRATEGIES
TMP-1B	GENERAL NOTES & LOCAL NOTE
TMP-2	OFF SITE DETOUR ROUTE
TMP-3	TEMPORARY TRAFFIC CONTROL PHASING
TMP-4	TEMPORARY TRAFFIC CONTROL STEP 2 DETAIL
TMP-5	TEMPORARY TRAFFIC CONTROL STEPS 3 & 4 DETAIL
TMP-6	TEMPORARY TRAFFIC CONTROL STEPS 5 THRU 7 DETAIL

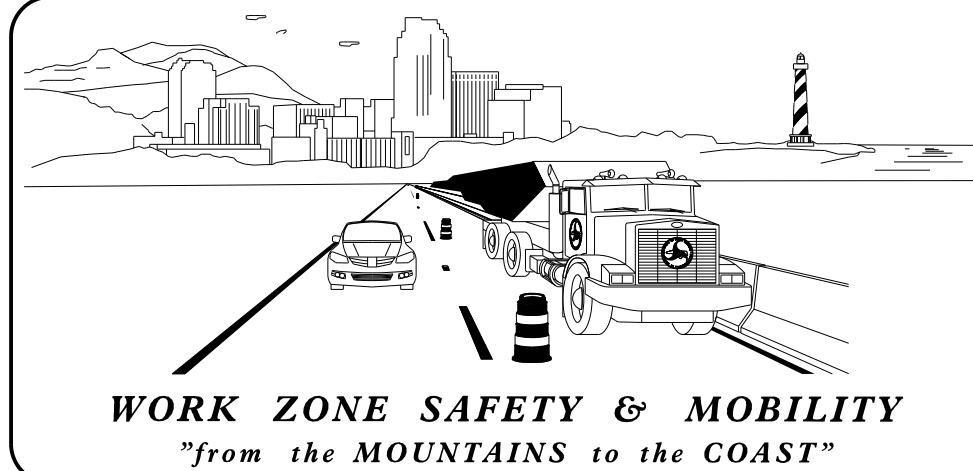
SHEET NO.

TMP-1

**BR-0125**

**TIP PROJECT:**

4/7/2020 S:\TMU\WZTC\DesignGroup2\062508\Richardson\BR0125\BR0125\_TC\_TMP01\_tsh.dgn User:derichardson



**PLANS PREPARED BY:**  
D. E. RICHARDSON  
NCDOT/WZTC

**NCDOT CONTACTS:**  
K. C. THORNEWELL, PE  
PROJECT ENGINEER  
M. H. STEELMAN  
PROJECT DESIGN ENGINEER



**DOCUMENT NOT CONSIDERED FINAL UNLESS ALL SIGNATURES COMPLETED**

APPROVED: *Kenneth C. Thornevell Jr., P.E.*  
1E991EF27373405

DATE: 11/5/2020

SEAL



# ROADWAY STANDARD DRAWINGS

THE FOLLOWING ROADWAY STANDARDS AS SHOWN IN "ROADWAY STANDARD DRAWINGS" - N.C. DEPARTMENT OF TRANSPORTATION - RALEIGH, N.C., DATED JANUARY 2018 ARE APPLICABLE TO THIS PROJECT AND BY REFERENCE HEREBY ARE CONSIDERED A PART OF THESE PLANS:

STD. NO.	TITLE
1101.01	WORK ZONE WARNING SIGNS
1101.02	TEMPORARY LANE CLOSURES
1101.03	TEMPORARY ROAD CLOSURES
1101.04	TEMPORARY SHOULDER CLOSURES
1101.05	WORK ZONE VEHICLE ACCESSES
1101.06	WARNING SIGNS FOR BLASTING ZONES
1101.11	TRAFFIC CONTROL DESIGN TABLES
1110.01	STATIONARY WORK ZONE SIGNS
1110.02	PORTABLE WORK ZONE SIGNS
1115.01	FLASHING ARROW BOARDS
1130.01	DRUMS
1135.01	CONES
1145.01	BARRICADES
1150.01	FLAGGING DEVICES
1160.01	TEMPORARY CRASH CUSHION
1165.01	TRUCK MOUNTED ATTENUATOR
1170.01	PORTABLE CONCRETE BARRIER
1180.01	SKINNY - DRUMS
1205.01	PAVEMENT MARKINGS - LINE TYPES AND OFFSETS
1205.02	PAVEMENT MARKINGS - TWO LANE AND MULTILANE ROADWAYS
1205.03	PAVEMENT MARKINGS - EXITS AND ENTRANCE RAMP
1205.04	PAVEMENT MARKINGS - INTERSECTIONS
1205.05	PAVEMENT MARKINGS - TURN LANES
1205.06	PAVEMENT MARKINGS - LANE DROPS
1205.07	PAVEMENT MARKINGS - PEDESTRIAN CROSSWALKS
1205.08	PAVEMENT MARKINGS - SYMBOLS AND WORD MESSAGES
1205.09	PAVEMENT MARKINGS - PAINTED ISLANDS
1205.10	PAVEMENT MARKINGS - SCHOOL AREAS
1205.11	PAVEMENT MARKINGS - RAILROAD CROSSINGS
1205.12	PAVEMENT MARKINGS - BRIDGES
1205.13	PAVEMENT MARKINGS - LANE REDUCTIONS
1205.14	PAVEMENT MARKINGS - ROUNDABOUTS
1205.15	PAVEMENT MARKINGS - SUPERSTREETS
1250.01	RAISED PAVEMENT MARKERS - INSTALLATION SPACING
1251.01	RAISED PAVEMENT MARKERS - (PERMANENT AND TEMPORARY)
1261.01	GUARDRAIL AND BARRIER DELINEATORS - INSTALLATION SPACING
1261.02	GUARDRAIL AND BARRIER DELINEATORS - TYPES AND MOUNTING
1262.01	GUARDRAIL END DELINEATION
1264.01	OBJECT MARKERS - TYPES
1264.02	OBJECT MARKERS - INSTALLATION

# LEGEND

## GENERAL

- DIRECTION OF TRAFFIC FLOW
- DIRECTION OF PEDESTRIAN TRAFFIC FLOW
- EXIST. PVMT.
- NORTH ARROW
- PROPOSED PVMT.
- TEMP. SHORING (LOCATION PURPOSES ONLY)
- WORK AREA
- REMOVAL

## SIGNALS

- EXISTING
- PROPOSED
- TEMPORARY

## PAVEMENT MARKINGS

- EXISTING LINES
- TEMPORARY LINES

## TRAFFIC CONTROL DEVICES

- BARRICADE (TYPE III)
- CONE
- DRUM
- SKINNY DRUM
- TUBULAR MARKER
- TEMPORARY CRASH CUSHION
- FLASHING ARROW BOARD
- FLAGGER
- LAW ENFORCEMENT
- TRUCK MOUNTED ATTENUATOR (TMA)
- CHANGEABLE MESSAGE SIGN

## TEMPORARY SIGNING

- PORTABLE SIGN
- STATIONARY SIGN
- STATIONARY OR PORTABLE SIGN

## PAVEMENT MARKERS

- CRYSTAL/CRYSTAL
- CRYSTAL/RED
- YELLOW/YELLOW

## PAVEMENT MARKING SYMBOLS

- PAVEMENT MARKING SYMBOLS

## TEMPORARY PAVEMENT MARKING

4" PAINT

- PA WHITE EDGELINE
- PI YELLOW DOUBLE CENTERLINE

# MANAGEMENT STRATEGIES

- USING FLAGGERS, CONSTRUCT AS MUCH AS POSSIBLE
- DETOUR TRAFFIC FOR A WEEKEND

APPROVED: <i>Kenneth C. Thornevell, Jr., P.E.</i> DATE: 11/5/2020			ROADWAY STANDARD DRAWINGS, LEGEND AND MANAGEMENT STRATEGIES
<b>DOCUMENT NOT CONSIDERED FINAL UNLESS ALL SIGNATURES COMPLETED</b>			

## GENERAL NOTES

CHANGES MAY BE REQUIRED WHEN PHYSICAL DIMENSIONS IN THE DETAIL DRAWINGS, STANDARD DETAILS, AND ROADWAY DETAILS ARE NOT ATTAINABLE TO MEET FIELD CONDITIONS OR RESULT IN DUPLICATE OR UNDESIRE OVERLAPPING OF DEVICES. MODIFICATION MAY INCLUDE: MOVING, SUPPLEMENTING, COVERING, OR REMOVAL OF DEVICES AS DIRECTED BY THE ENGINEER.

THE FOLLOWING GENERAL NOTES APPLY AT ALL TIMES FOR THE DURATION OF THE CONSTRUCTION PROJECT EXCEPT WHEN OTHERWISE NOTED IN THE PLAN OR DIRECTED BY THE ENGINEER.

### TIME RESTRICIONS FOR BLASTING OPERATIONS

- A) STOPPING TRAFFIC WILL ONLY BE ALLOWED FOR BLASTING OPERATIONS FOR A MAXIMUM OF FIFTEEN (15) MINUTES. DO NOT STOP TRAFFIC DURING THE FOLLOWING TIME RESTRICTIONS:

SR-1002	MONDAY THROUGH FRIDAY 6:00 AM TO 8:00 AM 2:30 PM TO 4:30 PM
---------	---

- B) DO NOT CONDUCT ANY HAULING OPERATIONS AGAINST THE FLOW OF TRAFFIC OF AN OPEN TRAVELWAY UNLESS THE HAULING OPERATION IS PROTECTED BY BARRIER OR GUARDRAIL OR AS DIRECTED BY THE ENGINEER.

### LANE AND SHOULDER CLOSURE REQUIREMENTS

- C) REMOVE LANE CLOSURE DEVICES FROM THE LANE WHEN WORK IS NOT BEING PERFORMED BEHIND THE LANE CLOSURE OR WHEN A LANE CLOSURE IS NO LONGER NEEDED OR AS DIRECTED BY THE ENGINEER.

- D) WHEN PERSONNEL AND/OR EQUIPMENT ARE WORKING WITHIN 15 FT OF AN OPEN TRAVEL LANE, CLOSE THE NEAREST OPEN SHOULDER USING ROADWAY STANDARD DRAWING NO. 1101.04 UNLESS THE WORK AREA IS PROTECTED BY BARRIER OR GUARDRAIL OR A LANE CLOSURE IS INSTALLED.

- E) WHEN PERSONNEL AND/OR EQUIPMENT ARE WORKING ON THE SHOULDER ADJACENT TO AN UNDIVIDED FACILITY AND WITHIN 5 FT OF AN OPEN TRAVEL LANE, CLOSE THE NEAREST OPEN TRAVEL LANE USING ROADWAY STANDARD DRAWING NO. 1101.02 UNLESS THE WORK AREA IS PROTECTED BY BARRIER OR GUARDRAIL.

WHEN PERSONNEL AND/OR EQUIPMENT ARE WORKING ON THE SHOULDER ADJACENT TO A DIVIDED FACILITY AND WITHIN 10 FT OF AN OPEN TRAVEL LANE, CLOSE THE NEAREST OPEN TRAVEL LANE USING ROADWAY STANDARD DRAWING NO. 1101.02 UNLESS THE WORK AREA IS PROTECTED BY BARRIER OR GUARDRAIL.

- F) WHEN PERSONNEL AND/OR EQUIPMENT ARE WORKING WITHIN A LANE OF TRAVEL OF AN UNDIVIDED OR DIVIDED FACILITY, CLOSE THE LANE ACCORDING TO THE TRAFFIC CONTROL PLANS, ROADWAY STANDARD DRAWINGS, OR AS DIRECTED BY THE ENGINEER. CONDUCT THE WORK SO THAT ALL PERSONNEL AND/OR EQUIPMENT REMAIN WITHIN THE CLOSED TRAVEL LANE.

### PAVEMENT EDGE DROP OFF REQUIREMENTS

- G) BACKFILL AT A 6:1 SLOPE UP TO THE EDGE AND ELEVATION OF EXISTING PAVEMENT IN AREAS ADJACENT TO AN OPENED TRAVEL LANE THAT HAS AN EDGE OF PAVEMENT DROP-OFF AS FOLLOWS:

BACKFILL DROP-OFFS THAT EXCEED 2 INCHES ON ROADWAYS WITH POSTED SPEED LIMITS OF 45 MPH OR GREATER.

BACKFILL DROP-OFFS THAT EXCEED 3 INCHES ON ROADWAYS WITH POSTED SPEED LIMITS LESS THAN 45 MPH.

BACKFILL WITH SUITABLE COMPACTED MATERIAL, AS APPROVED BY THE ENGINEER, AT NO EXPENSE TO THE DEPARTMENT.

- H) DO NOT EXCEED A DIFFERENCE OF 2 INCHES IN ELEVATION BETWEEN OPEN LANES OF TRAFFIC FOR NOMINAL LIFTS OF 1.5 INCHES. INSTALL ADVANCE WARNING "UNEVEN LANES" SIGNS (W8-11) 500 FT IN ADVANCE AND A MINIMUM OF EVERY HALF MILE THROUGHOUT THE UNEVEN AREA.

### TRAFFIC PATTERN ALTERATIONS

- I) NOTIFY THE ENGINEER THIRTY (30) CALENDAR DAYS PRIOR TO ANY TRAFFIC PATTERN ALTERATION.

### SIGNING

- J) INSTALL ADVANCE WORK ZONE WARNING SIGNS WHEN WORK IS WITHIN 40 FT FROM THE EDGE OF TRAVEL LANE AND NO MORE THAN THREE (3) DAYS PRIOR TO THE BEGINNING OF CONSTRUCTION.

- K) PROVIDE SIGNING AND DEVICES REQUIRED TO CLOSE THE ROAD ACCORDING TO THE ROADWAY STANDARD DRAWINGS AND TRAFFIC CONTROL PLANS.

PROVIDE SIGNING REQUIRED FOR THE OFF-SITE DETOUR ROUTE AS SHOWN IN THE TRAFFIC CONTROL PLANS.

- L) COVER OR REMOVE ALL SIGNS AND DEVICES REQUIRED TO CLOSE THE ROAD WHEN ROAD CLOSURE IS NOT IN OPERATION.

COVER OR REMOVE ALL SIGNS REQUIRED FOR THE OFF-SITE DETOUR WHEN THE DETOUR IS NOT IN OPERATION.

- M) ENSURE ALL NECESSARY SIGNING IS IN PLACE PRIOR TO ALTERING ANY TRAFFIC PATTERN.

- N) INSTALL BLACK ON ORANGE "DIP" SIGNS (W8-2) AND/OR "BUMP" SIGNS (W8-1) 500 FT IN ADVANCE OF THE UNEVEN AREA, OR AS DIRECTED BY THE ENGINEER.

### TRAFFIC CONTROL DEVICES

- O) PLACE TYPE III BARRICADES, WITH "ROAD CLOSED" SIGN R11-2 ATTACHED, OF SUFFICIENT LENGTH TO CLOSE ENTIRE ROADWAY.

### PAVEMENT MARKINGS AND MARKERS

- P) INSTALL TEMPORARY PAVEMENT MARKINGS AND TEMPORARY PAVEMENT MARKERS ON INTERIM LAYERS OF PAVEMENT AS FOLLOWS:

ROAD NAME	MARKING	MARKER
-L- TRAPHILL RD	PAINT	NONE
-Y- TWIN LOCUST RD	PAINT	NONE

- Q) PLACE ONE APPLICATION OF PAINT FOR TEMPORARY TRAFFIC PATTERNS. PLACE A SECOND APPLICATION OF PAINT SIX (6) MONTHS AFTER THE INITIAL APPLICATION AND EVERY SIX MONTHS AS DIRECTED BY THE ENGINEER.

- R) TIE PROPOSED PAVEMENT MARKING LINES TO EXISTING PAVEMENT MARKING LINES.

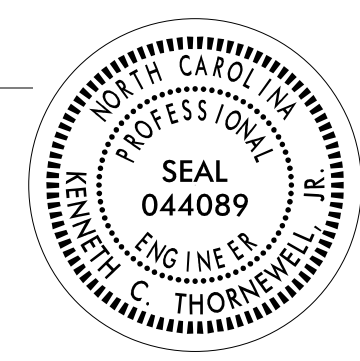

- S) REMOVE/REPLACE ANY CONFLICTING/DAMAGED PAVEMENT MARKINGS AND MARKERS BY THE END OF EACH DAY'S OPERATION.

### MISCELLANEOUS

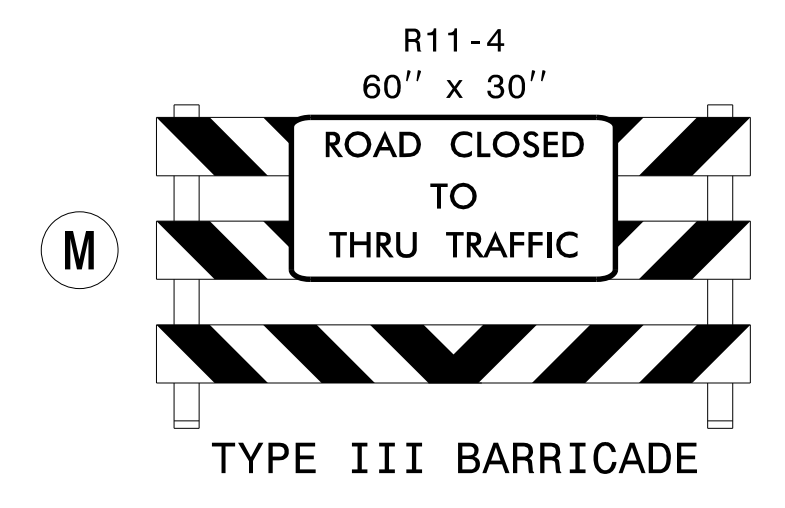
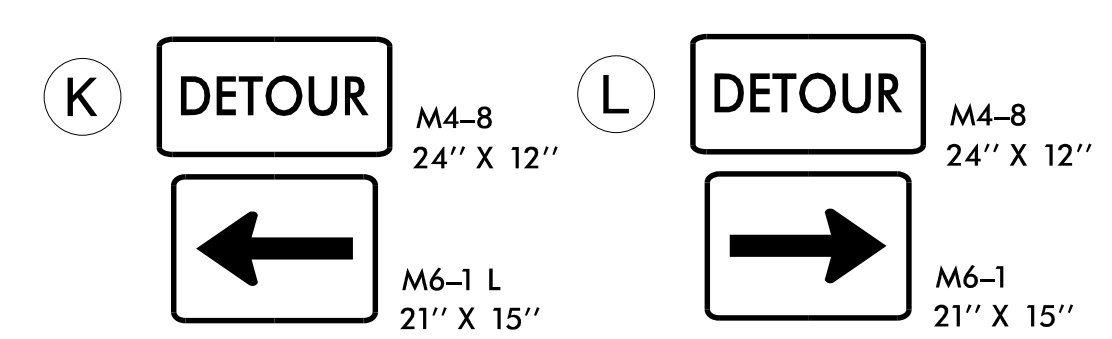
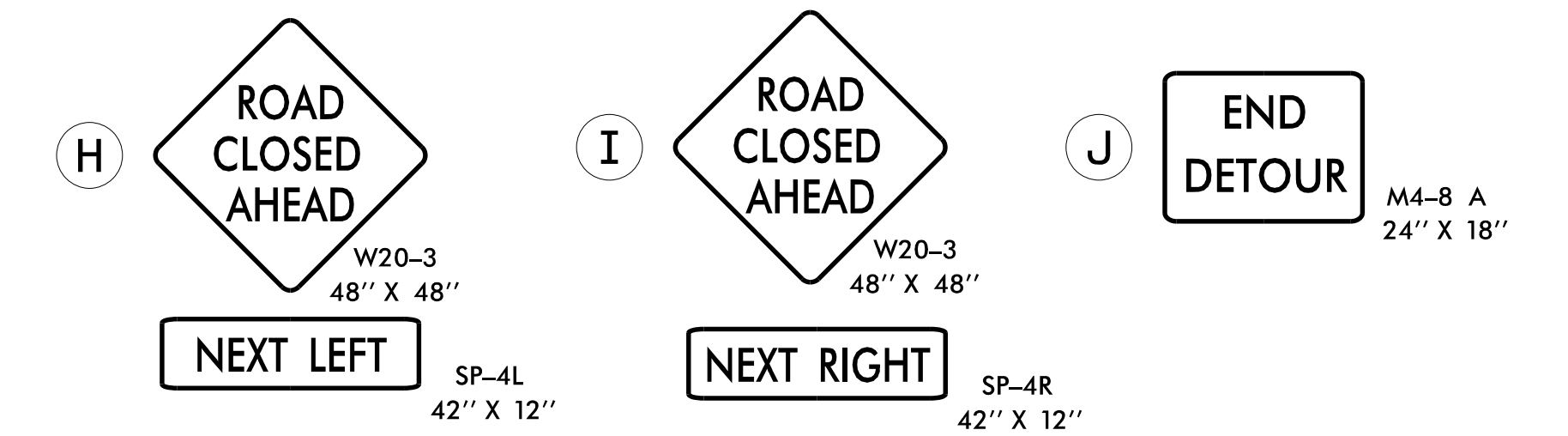
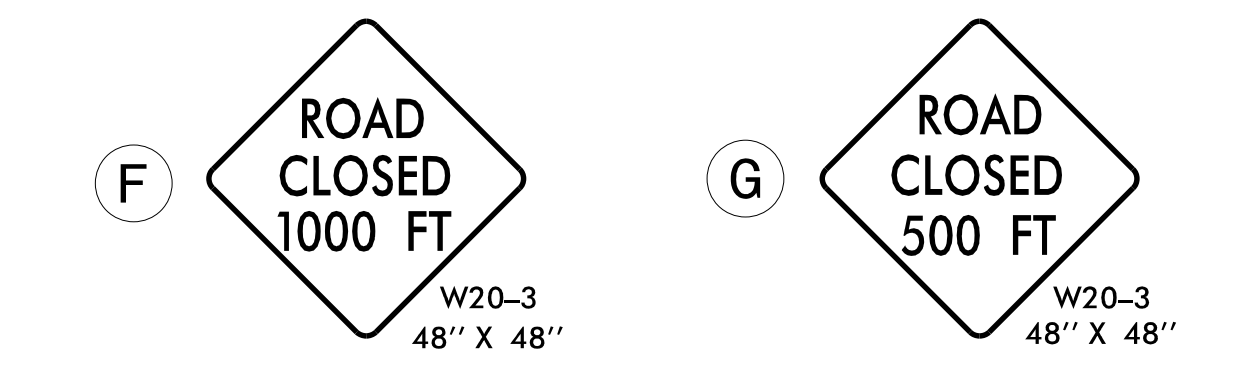
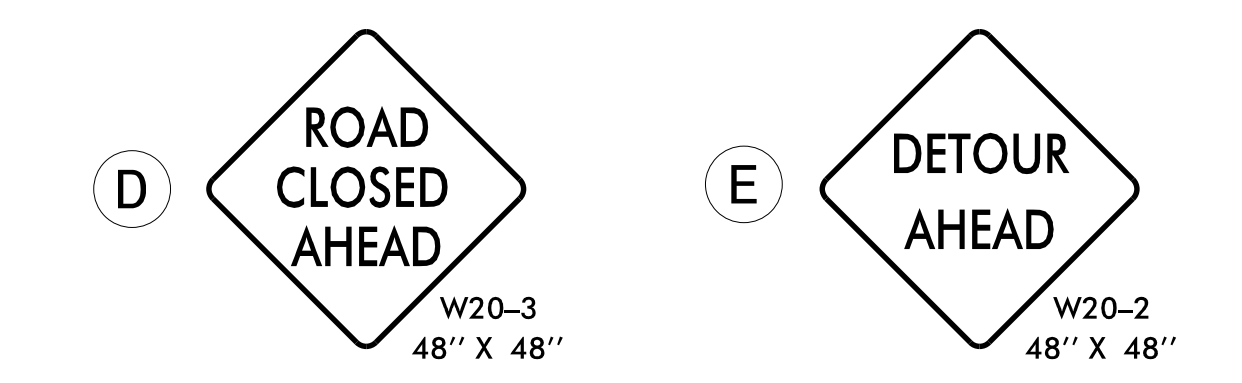
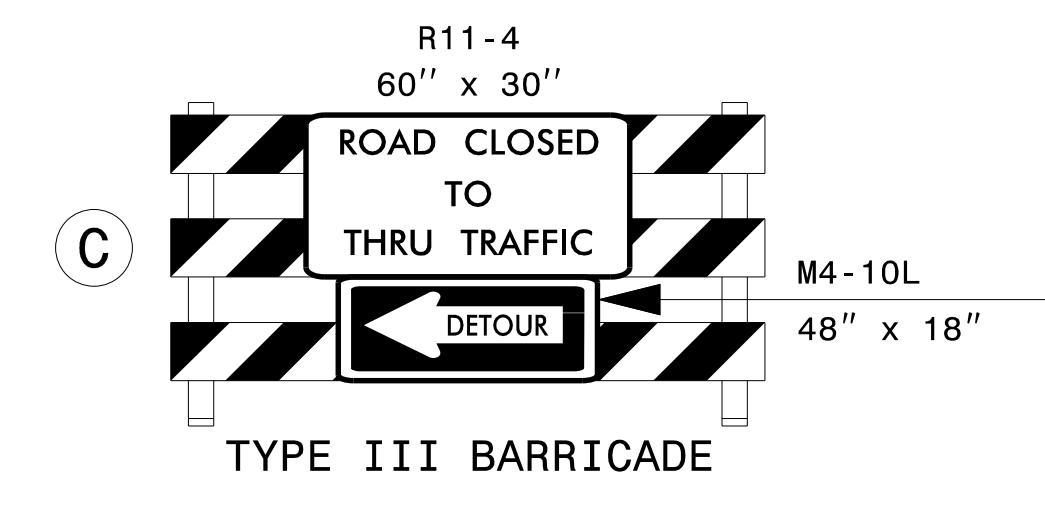
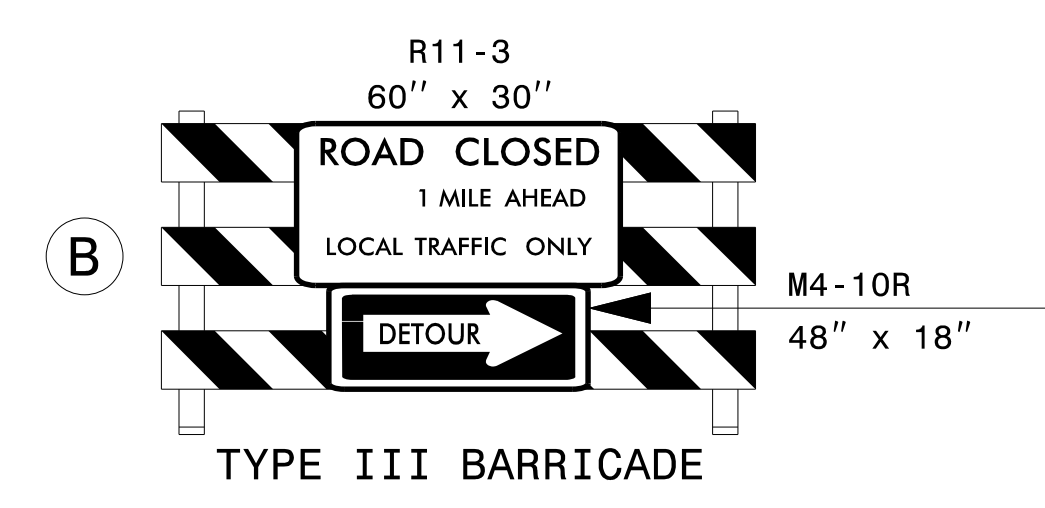
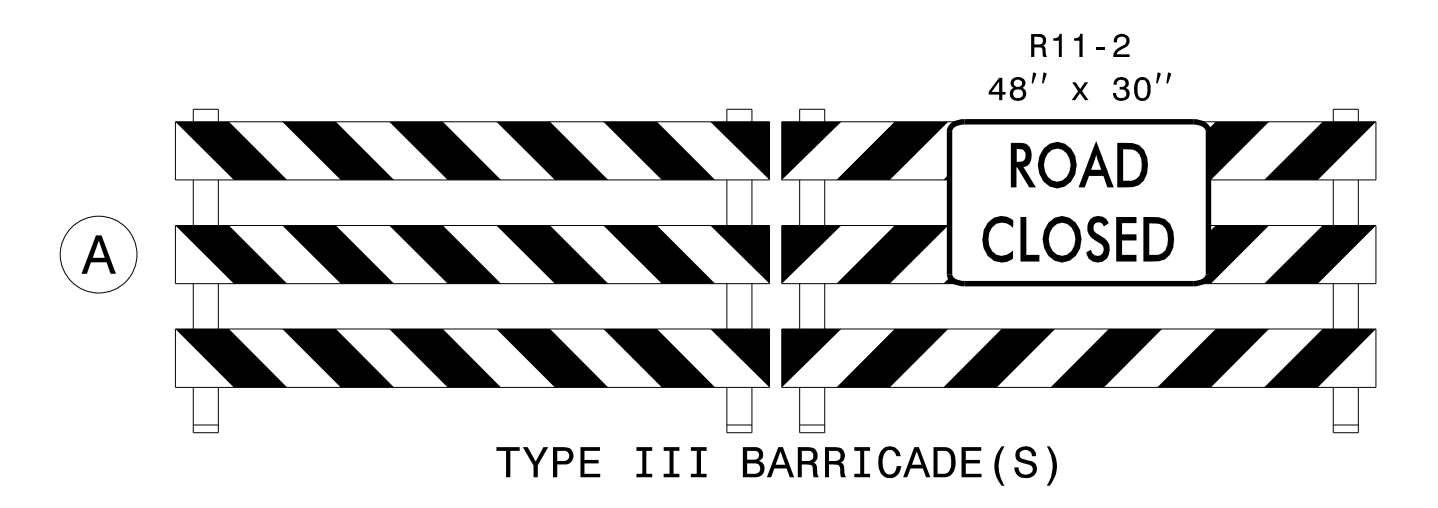
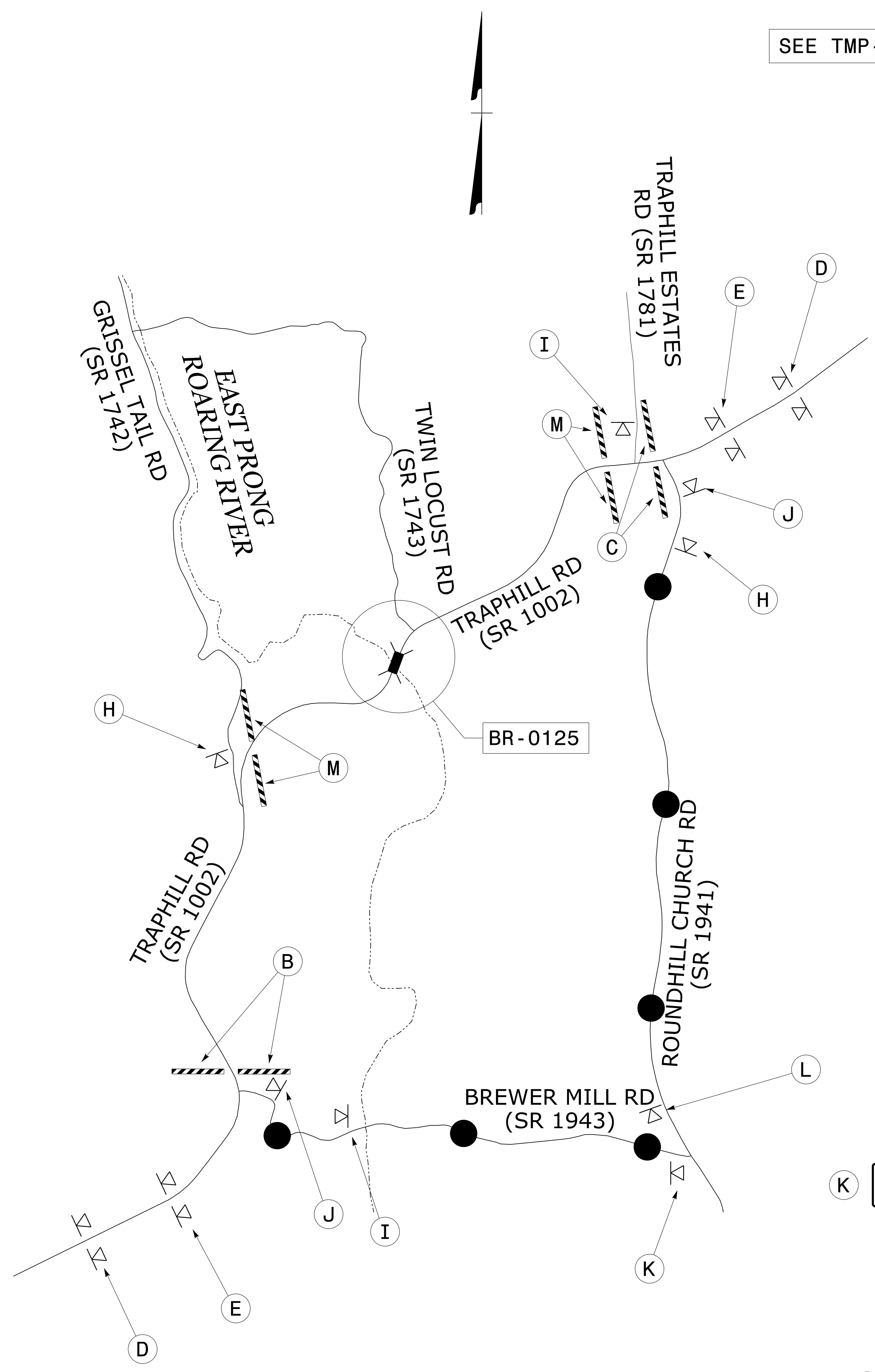
- T) IN THE EVENT A TIE-IN CANNOT BE MADE IN ONE DAY'S TIME, BRING THE TIE-IN AREA TO AN APPROPRIATE ROADWAY ELEVATION AS DETERMINED BY THE ENGINEER. PLACE BLACK ON ORANGE "LOOSE GRAVEL" SIGNS (W8-7) AND BLACK ON ORANGE "PAVEMENT ENDS" SIGNS (W8-3) 500 FT AND 1000 FT RESPECTIVELY IN ADVANCE OF THE UNEVEN AREAS. USE DRUMS TO DELINEATE THE EDGE OF ROADWAY ALONG UNPAVED AREAS.

## LOCAL NOTE

- 1 - NCDOT SHOULD COORDINATE WITH WILKES COUNTY SCHOOLS (ERIC BARKER, 336-667-1126) AND WILKES COUNTY EMERGENCY SERVICES (TIMOTHY PENNINGTON, 336-651-7363) AT LEAST ONE MONTH PRIOR TO CONSTRUCTION.

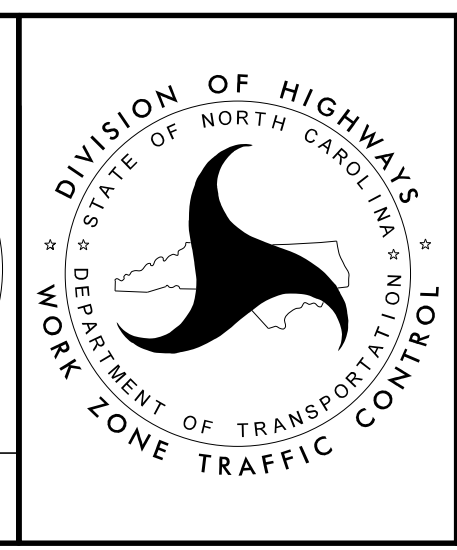
APPROVED: <i>Kenneth C. Thornevell Jr., P.E.</i> <small>1E991EF273F3405</small> DATE: 11/5/2020  <div style="text-align: center;">SEAL</div>		
<b>GENERAL NOTES AND LOCAL NOTE</b>		
<b>DOCUMENT NOT CONSIDERED FINAL UNLESS ALL SIGNATURES COMPLETED</b>		

SEE TMP-5 FOR ADDITIONAL SIGNAGE



APPROVED: *Kenneth C. Thornwell Jr., P.E.*  
 DATE: 11/5/2020

SEAL  
 044089  
 KENNETH C. THORNWELL JR.  
 PROFESSIONAL ENGINEER



OFF SITE DETOUR ROUTE

4/7/2020  
 S:\TMU\WZTC\DesignGroup2\062508\Richardson\BR0125\TC\_TMP02\_detour.dgn  
 User:derichardson

## PHASING

STEP 1 - INSTALL WORK ZONE ADVANCE WARNING SIGNS. SEE RSD 1101.01.

STEP 2 - USING RSD 1101.02, SHEET 1 OF 14 WHERE NECESSARY, CONSTRUCT -L- FROM 10+35+/- TO 19+00+/- UP TO, BUT NOT INCLUDING, THE FINAL LAYER OF SURFACE COURSE INCLUDING PROPOSED BRIDGE. SEE ROADWAY PLANS. SEE TMP-2. FOR BLASTING OPERATIONS, REFER TO GENERAL NOTES FOR BLASTING TIME RESTRICTIONS AND MAXIMUM ROAD STOPPAGE TIME.

WORK IN A CONTINUOUS MANNER TO COMPLETE THE WORK DESCRIBED IN STEPS 3 THRU 6 AND SHOWN ON TMP-5 FROM FRIDAY AT 6:00 PM TO THE FOLLOWING MONDAY AT 6:00 AM. SEE ICT AND LIQUIDATED DAMAGES.

STEP 3 - INSTALL ROAD CLOSURE AND DETOUR ROUTE SIGNS. SEE TMP-2, TMP-5, AND RSD 1101.03, SHEETS 1 OF 9.

- CLOSE TRAPHILL RD AND TWIN LOCUST RD AS SHOWN ON TMP-2 AND TMP-5 AND DETOUR TRAFFIC.

STEP 4 - AWAY FROM TRAFFIC, CONSTRUCT -L- FROM 19+00+/- TO 22+30+/- AND -Y- STA 10+15+/- TO 11+68+/- UP TO, BUT NOT INCLUDING, THE FINAL LAYER OF SURFACE COURSE. SEE TMP-5.

STEP 5 - AWAY FROM TRAFFIC, INSTALL TEMPORARY MARKINGS IN FINAL PATTERN. SEE TMP-6.

STEP 6 - RE-OPEN TRAPHILL RD AND TWIN LOCUST RD TO NEW TRAFFIC PATTERN AS SHOWN ON TMP-6.

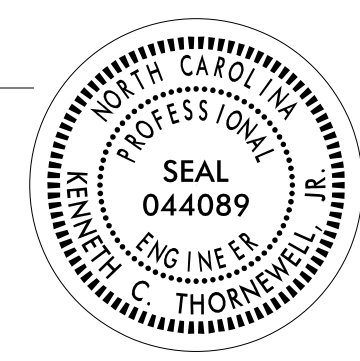

STEP 7 - USING RSD 1101.02, SHEET 1 OF 14, CONSTRUCT -L- FROM 10+35+/- TO 12+36+/- UP TO, BUT NOT INCLUDING, THE FINAL LAYER OF SURFACE COURSE. INSTALL TEMPORARY MARKINGS IN FINAL PATTERN.

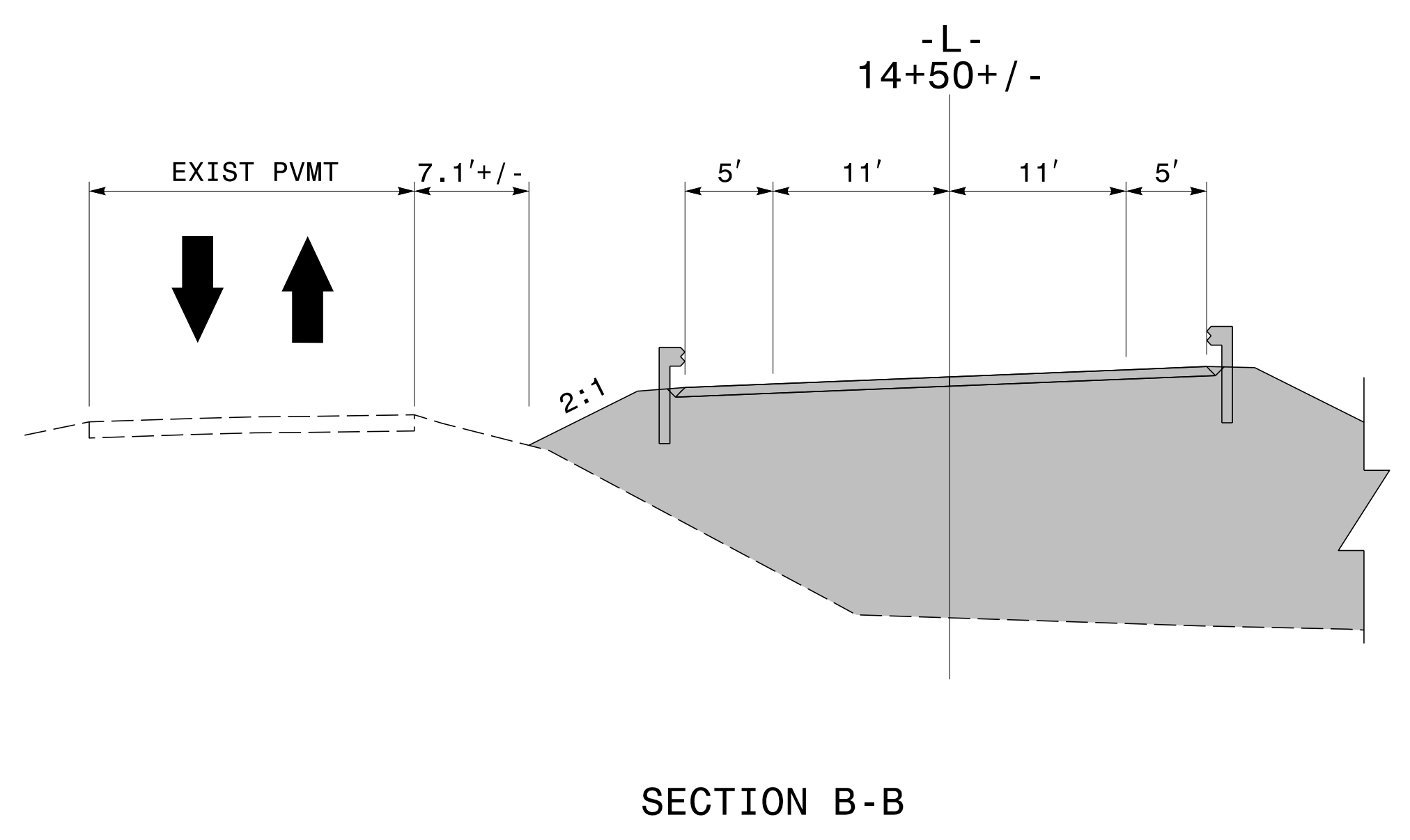
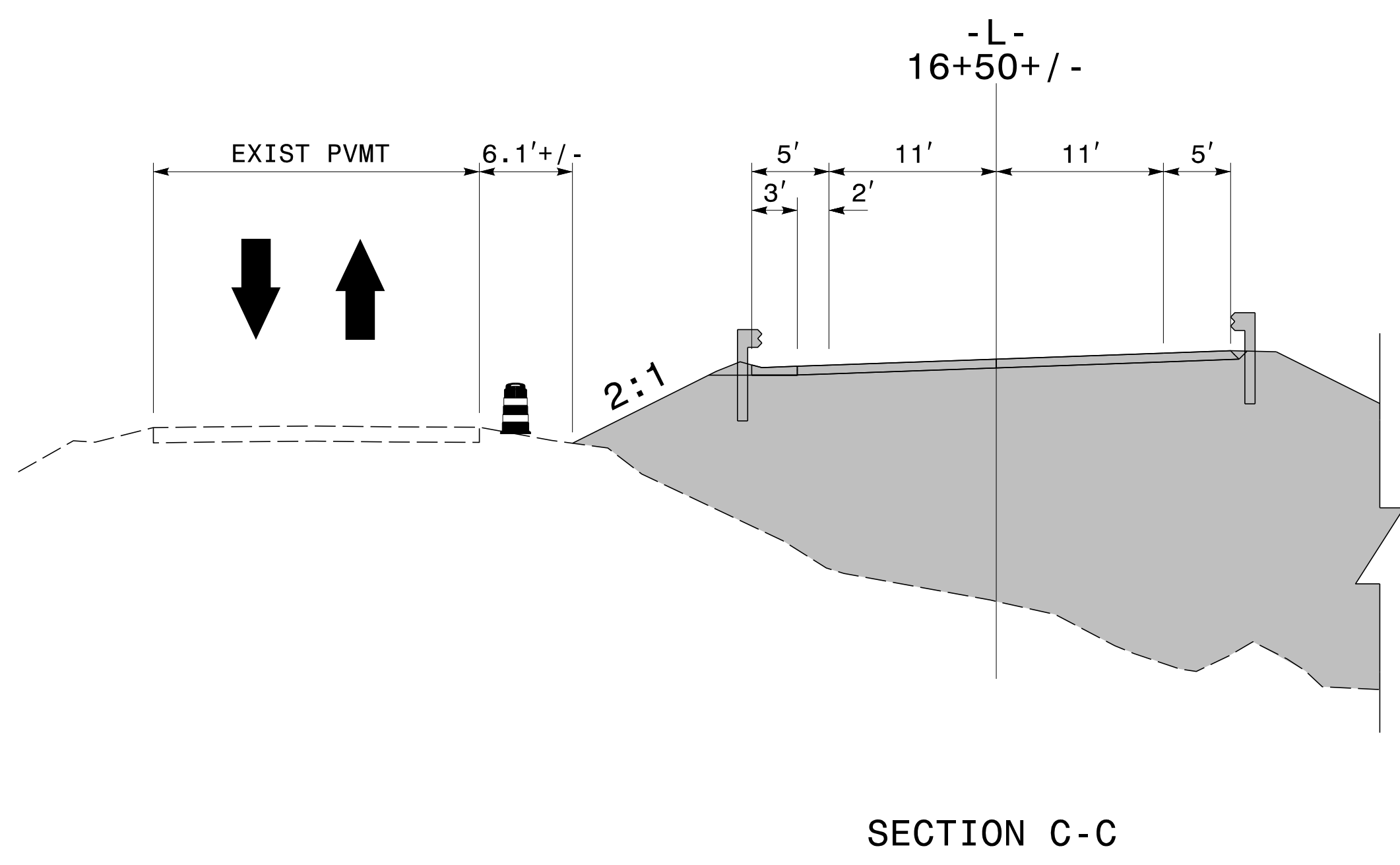
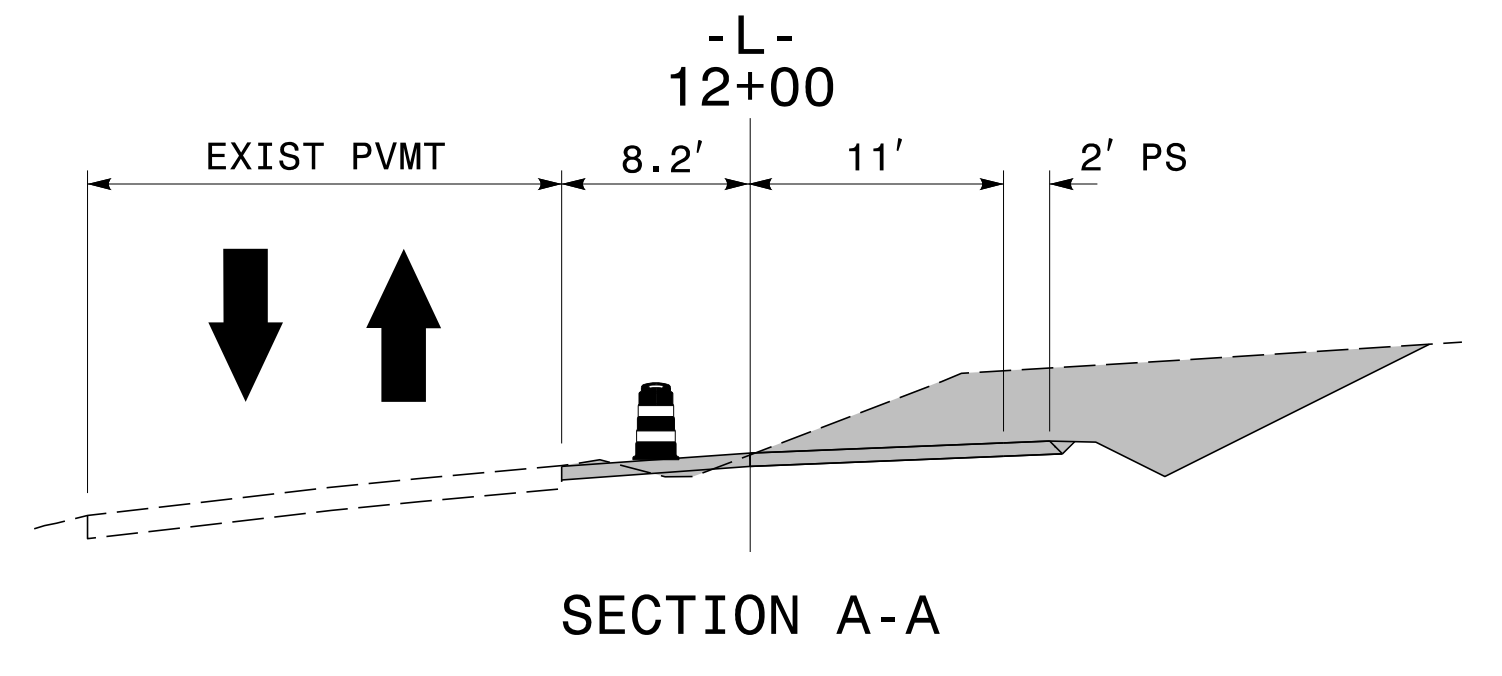
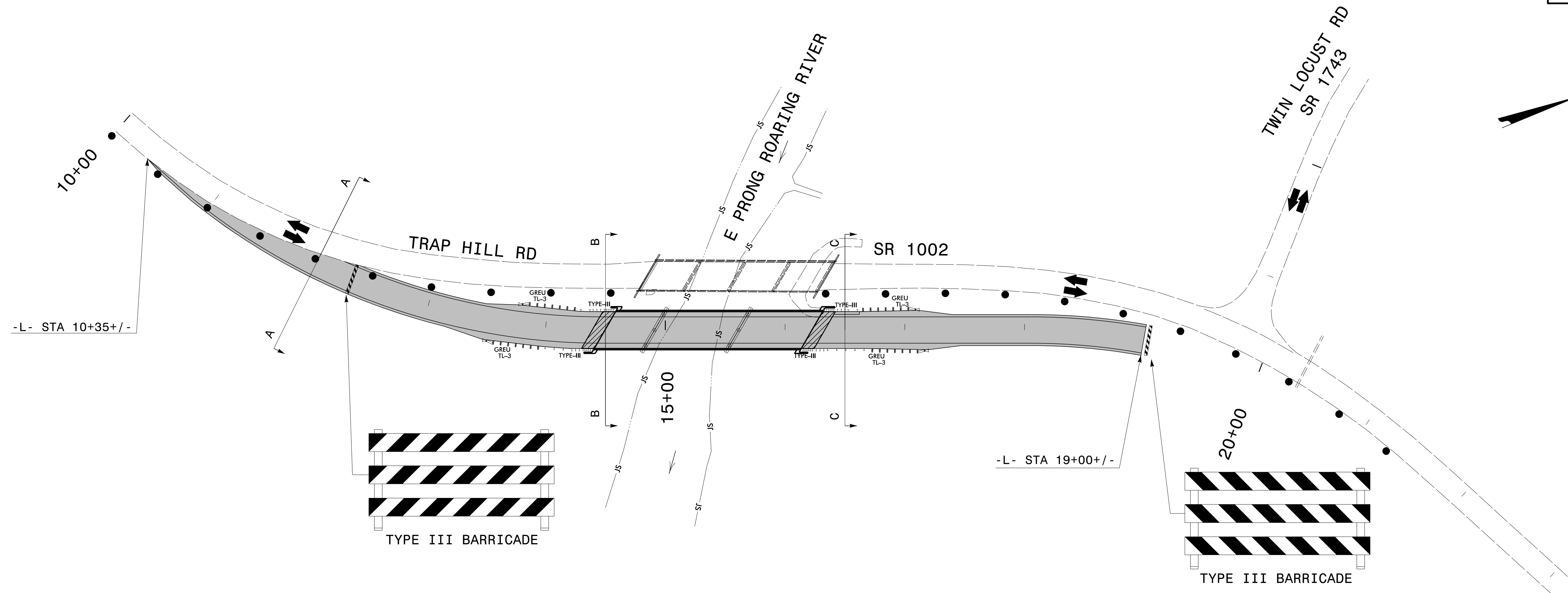
- USING RSD 1101.02, SHEET 1 OF 14 WHERE NECESSARY, REMOVE OLD BRIDGE AND APPROACHES AND COMPLETE ALL SIDE SLOPES AND PROPOSED DRAINAGE. SEE ROADWAY PLANS.

STEP 8 - USING RSD 1101.02, SHEET 1 OF 14, INSTALL THE FINAL LAYER OF SURFACE COURSE.

STEP 9 - USING RSD 1101.02, SHEET 1 OF 14, INSTALL THE FINAL PAVEMENT MARKINGS.

9/21/2020  
S:\TMU\WZTC\DesignGroup2\062508\Richardson\BR0125\BR0125\_TC\_TMP03\_phasing.dgn  
User: jdbeaver1

APPROVED: <i>Kenneth C. Thornwell Jr., P.E.</i> <small>1E991EF27373405</small> DATE: 11/5/2020  <div style="text-align: center;">             SEAL         </div>		<h3>TEMPORARY TRAFFIC CONTROL PHASING</h3>
<b>DOCUMENT NOT CONSIDERED FINAL UNLESS ALL SIGNATURES COMPLETED</b>		



APPROVED: *Kenneth C. Thornwell Jr., P.E.*  
1E991EF27373405

DATE: 11/5/2020

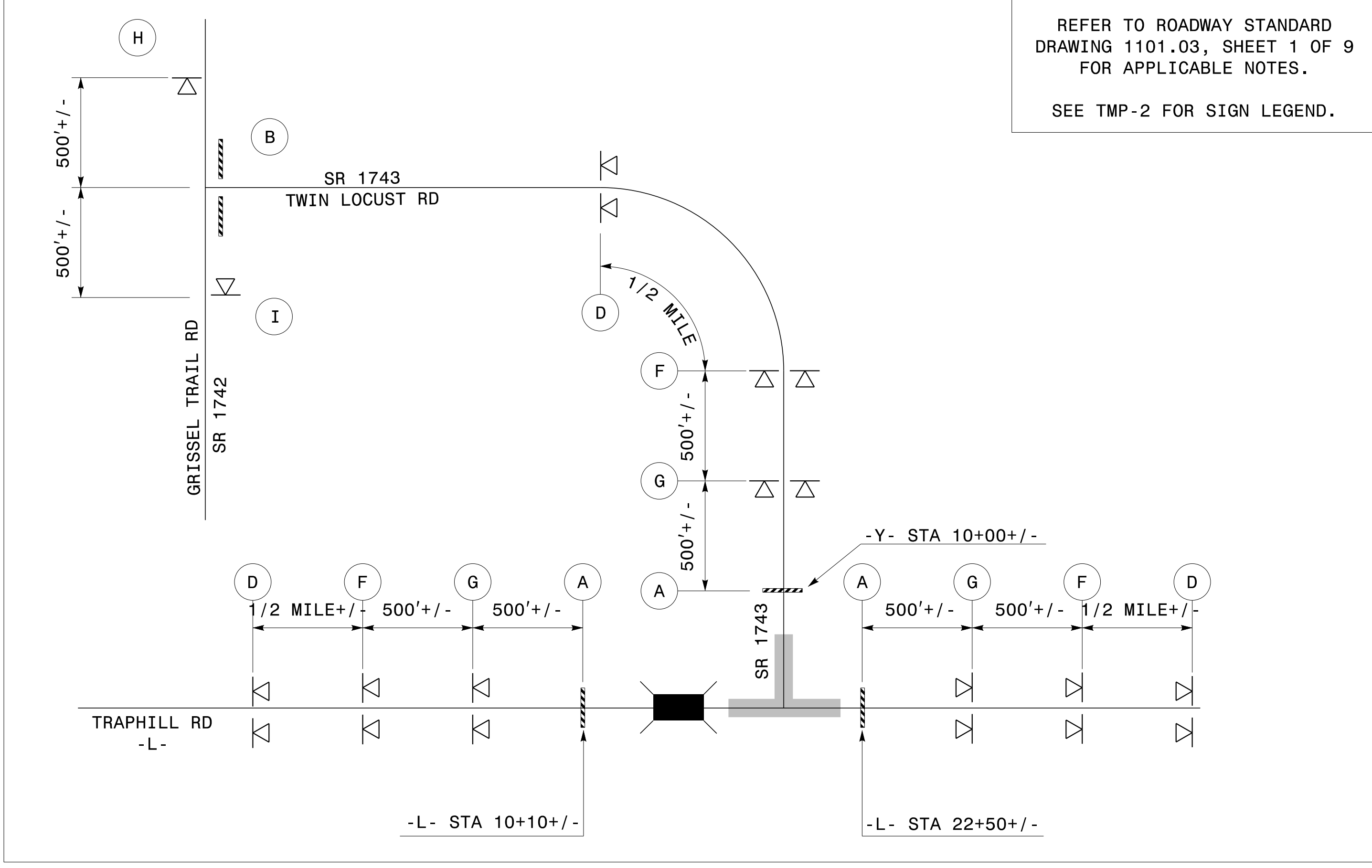
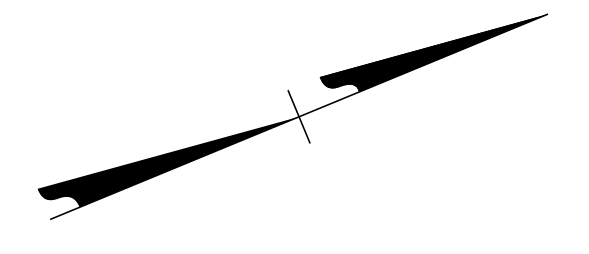
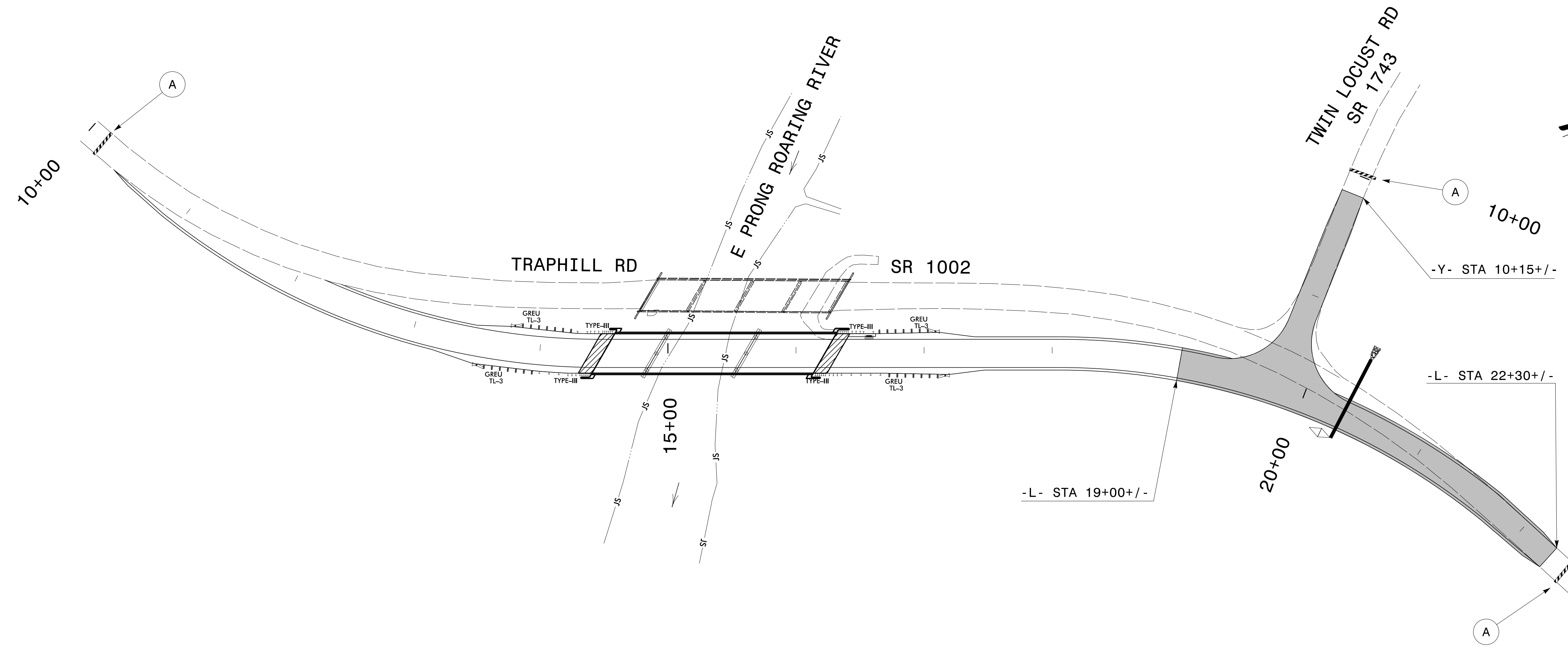
**SEAL**  
 044089  
 ENGINEER  
 KENNETH C. THORNWELL JR., P.E.



STEP 2

4/7/2020  
 S:\TMU\WZTC\DesignGroup2\062508\Richardson\BR0125\TC\_TMP04\_step 2.dgn  
 User:derichardson

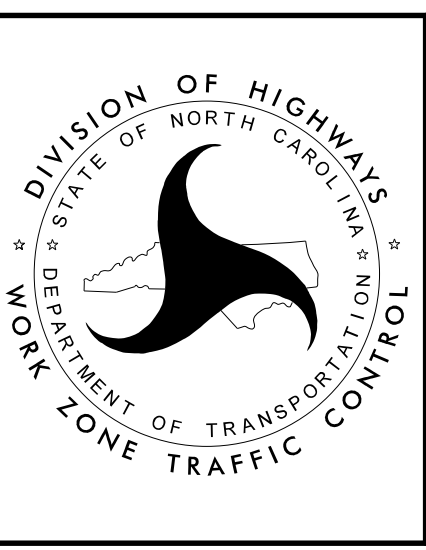
DOCUMENT NOT CONSIDERED FINAL  
 UNLESS ALL SIGNATURES COMPLETED



REFER TO ROADWAY STANDARD  
DRAWING 1101.03, SHEET 1 OF 9  
FOR APPLICABLE NOTES.  
SEE TMP-2 FOR SIGN LEGEND.

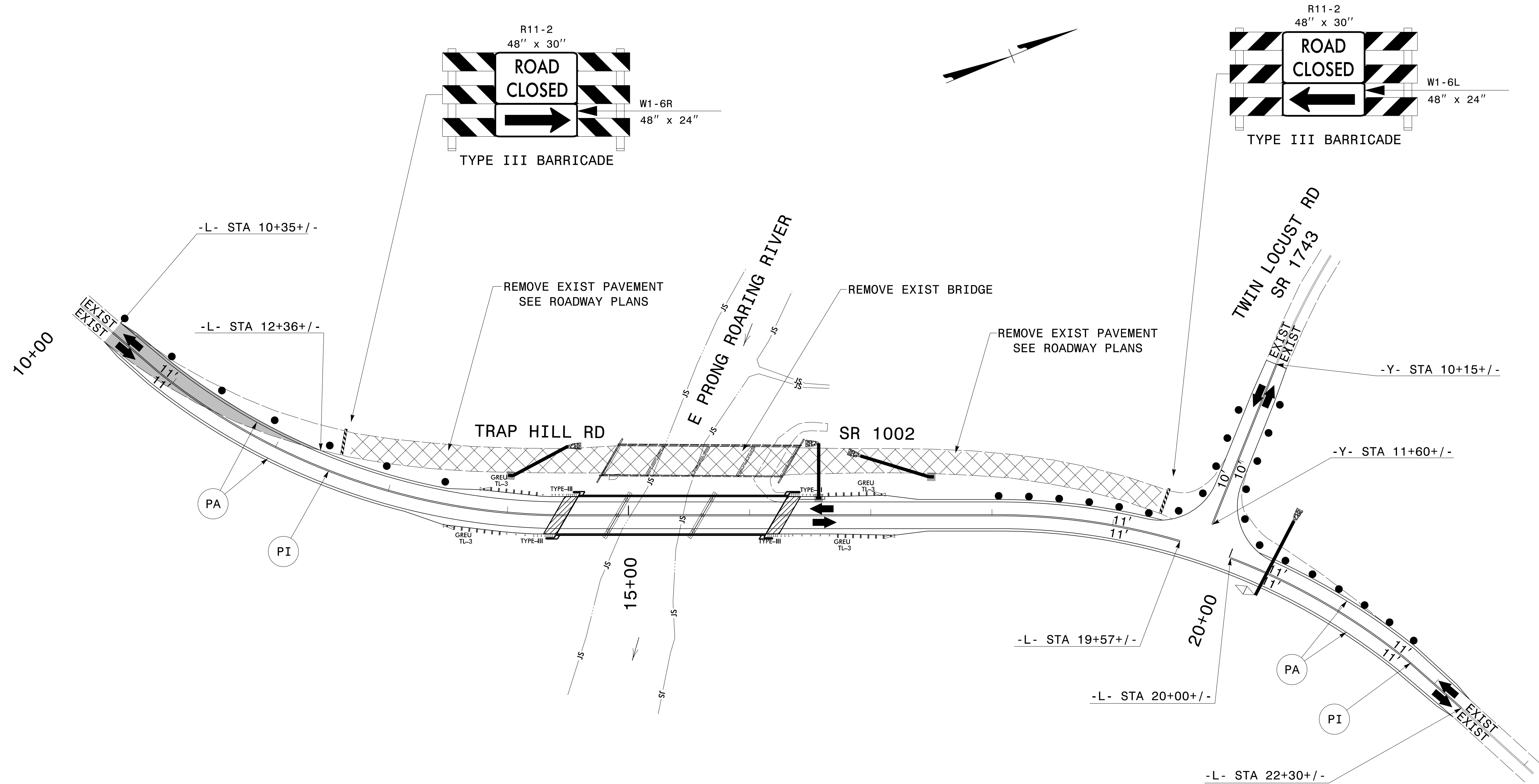
APPROVED: *Kenneth C. Hornswell Jr., P.E.*  
DATE: 11/5/2020

**DOCUMENT NOT CONSIDERED FINAL  
UNLESS ALL SIGNATURES COMPLETED**



**STEPS 3 & 4**

4/7/2020  
S:\TMU\WZTC\DesignGroup2\062508\Richardson\BR0125\BR0125\_TC\_TMP05\_steps\_3&4.dgn  
User:derichardson

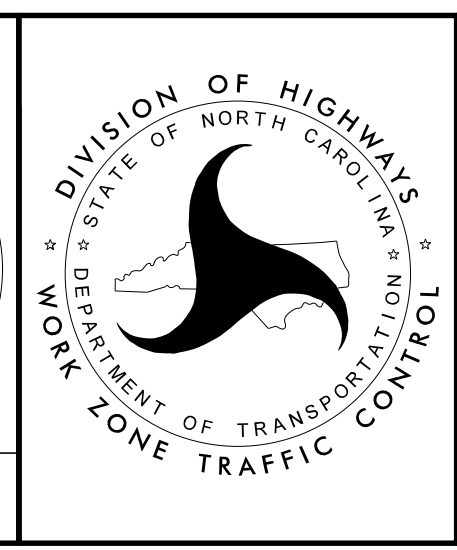


4/7/2020  
 S:\TMU\WZTC\DesignGroup2\062508\Richardson\BR0125\BR0125\_TC\_TMP06\_steps 5-7.dgn  
 User: dcrichardson

APPROVED: *Kenneth C. Thornwell Jr., P.E.*  
1E997EF27373405

DATE: 11/5/2020

**DOCUMENT NOT CONSIDERED FINAL  
UNLESS ALL SIGNATURES COMPLETED**



STEPS 5 THRU 7