

COMPUTED BY: ABJ DATE: 01/07/20
 CHECKED BY: JPM DATE: 01/08/20

STATE OF NORTH CAROLINA
 DIVISION OF HIGHWAYS

PROJECT REFERENCE NO. BR-0118	SHEET NO. X-1A
PREPARED IN THE OFFICE OF: KCA NC FIRM LICENSE No: C-1506 301 Fayetteville St., Suite 1500 Raleigh, NC 27601 (919)862-7839 KISINGER CAMPO & ASSOCIATES	
DOCUMENT NOT CONSIDERED FINAL UNLESS ALL SIGNATURES COMPLETED	

CROSS-SECTION SUMMARY

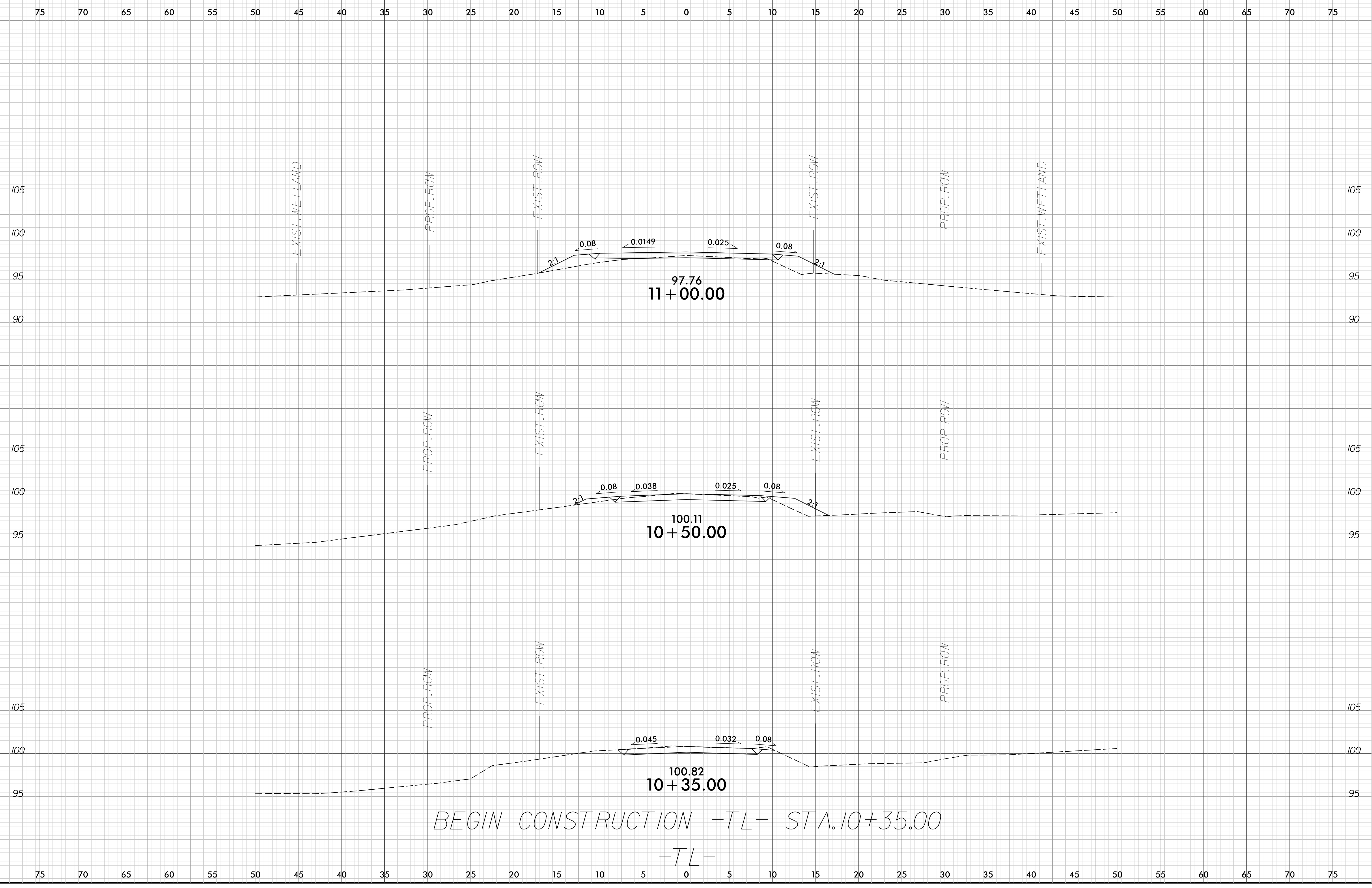
Station	Uncl. Exc.	Undercut	Embt	Station	Uncl. Exc.	Undercut	Embt
-L-	(cu. yd.)	(cu. yd.)	(cu. yd.)	TL-	(cu. yd.)	(cu. yd.)	(cu. yd.)
10+35.00	0		0	10+35.00	0		0
10+50.00	0		3	10+50.00	0		3
11+00.00	0		31	11+00.00	0		22
11+50.00	2		29	11+50.00	0		37
12+00.00	2		24	12+00.00	0		67
12+50.00	0		71	12+50.00	0		126
13+00.00	0		142	13+00.00	0		282
13+50.00	28		122	13+50.00	0		397
13+56.24	7		5	13+68.59	0		63
14+28.49	0		0	14+28.59	0		0
14+50.00	21		24	14+50.00	0		77
15+00.00	31		112	15+00.00	0		253
15+50.00	9		107	15+50.00	0		203
16+00.00	0		47	16+00.00	0		111
16+50.00	2		6	16+50.00	0		42
17+00.00	5		5	17+00.00	0		7
17+50.00	11		3	17+09.22	0		1
18+00.00	25		1				
18+50.00	47		0				
19+00.00	43		0				
19+12.43	5		0				

Note: Approximate quantities only. Unclassified Excavation, Borrow, Fine Grading, Clearing and Grubbing, will be paid for at the contract lump sum price for "Grading."

Note: Embankment column does not include backfill for undercut.

6/23/16

0 2.5 5	PROJ. REFERENCE NO.	SHEET NO.
	BR-0118	X-1

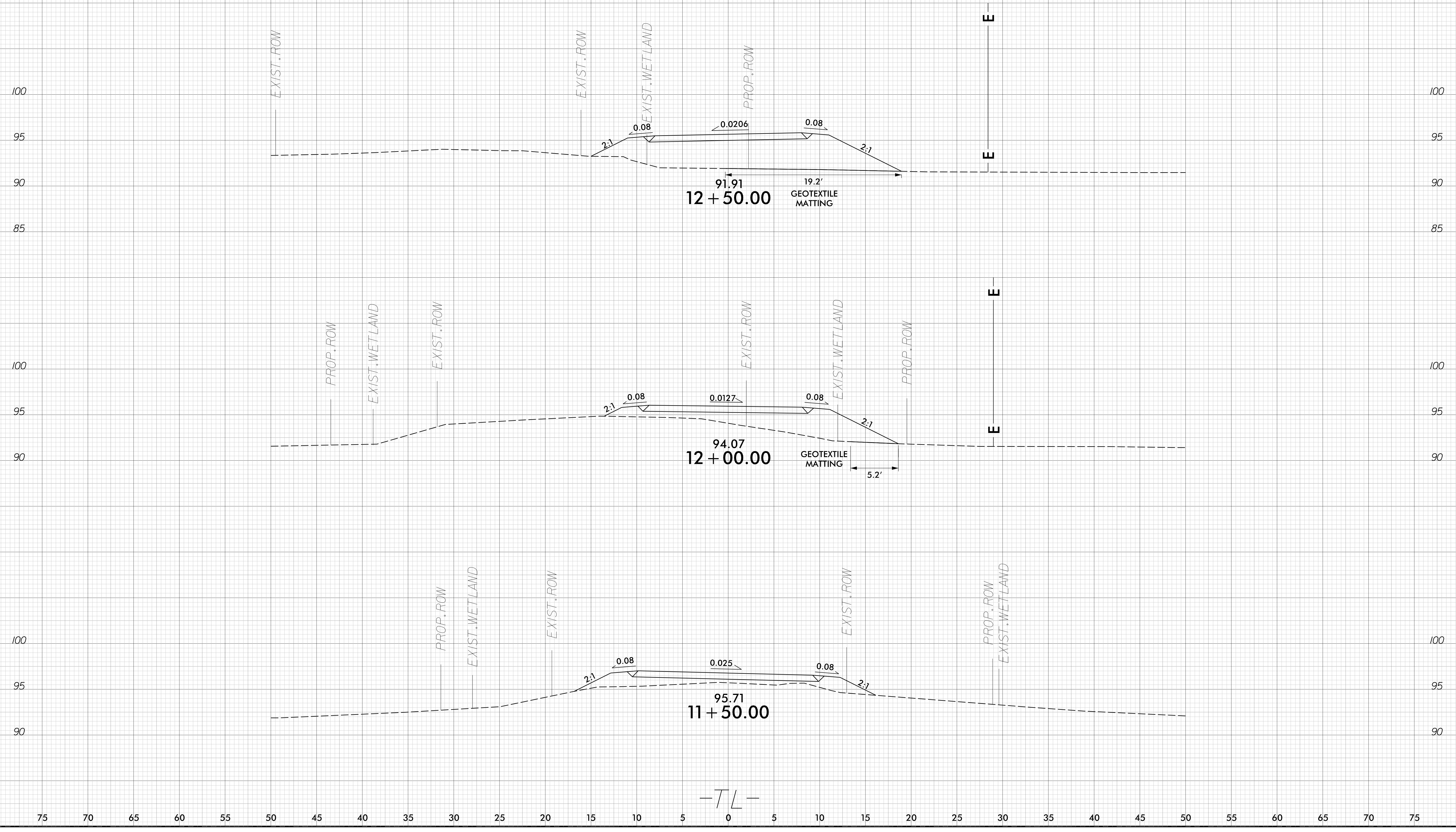


04-MAR-2020 15:36
BR-0118 Pdy-Api.dgn
Idebone

6/23/16

0 2.5 5	PROJ. REFERENCE NO.	SHEET NO.
█ █ █ █ █	BR-0118	X-2

75 70 65 60 55 50 45 40 35 30 25 20 15 10 5 0 5 10 15 20 25 30 35 40 45 50 55 60 65 70 75

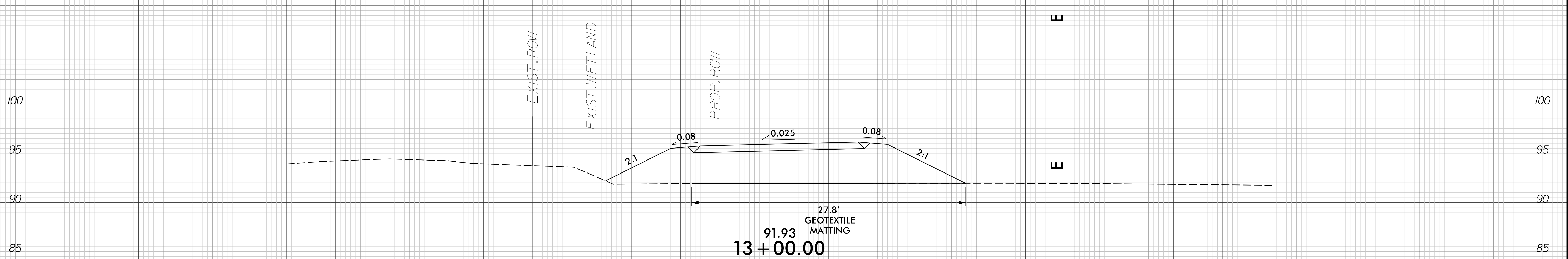
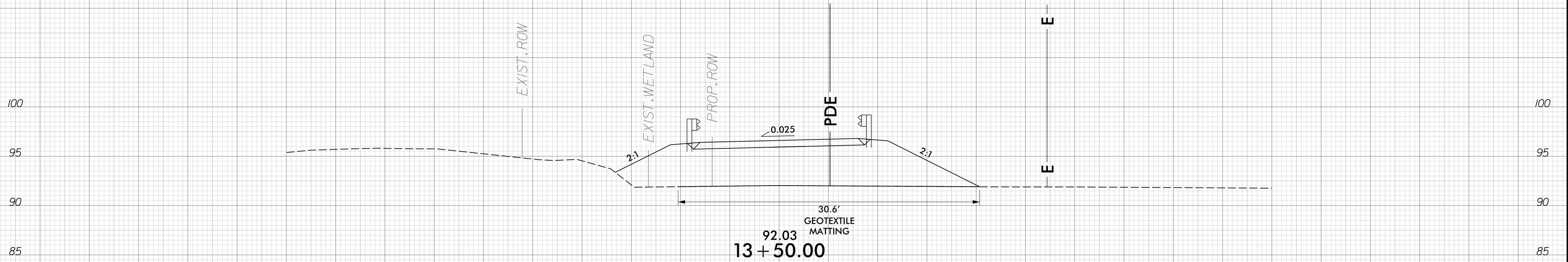


-T/L-

04-MAR-2020 15:36
BR-0118 Proj-App.dgn
idebone

75 70 65 60 55 50 45 40 35 30 25 20 15 10 5 0 5 10 15 20 25 30 35 40 45 50 55 60 65 70 75

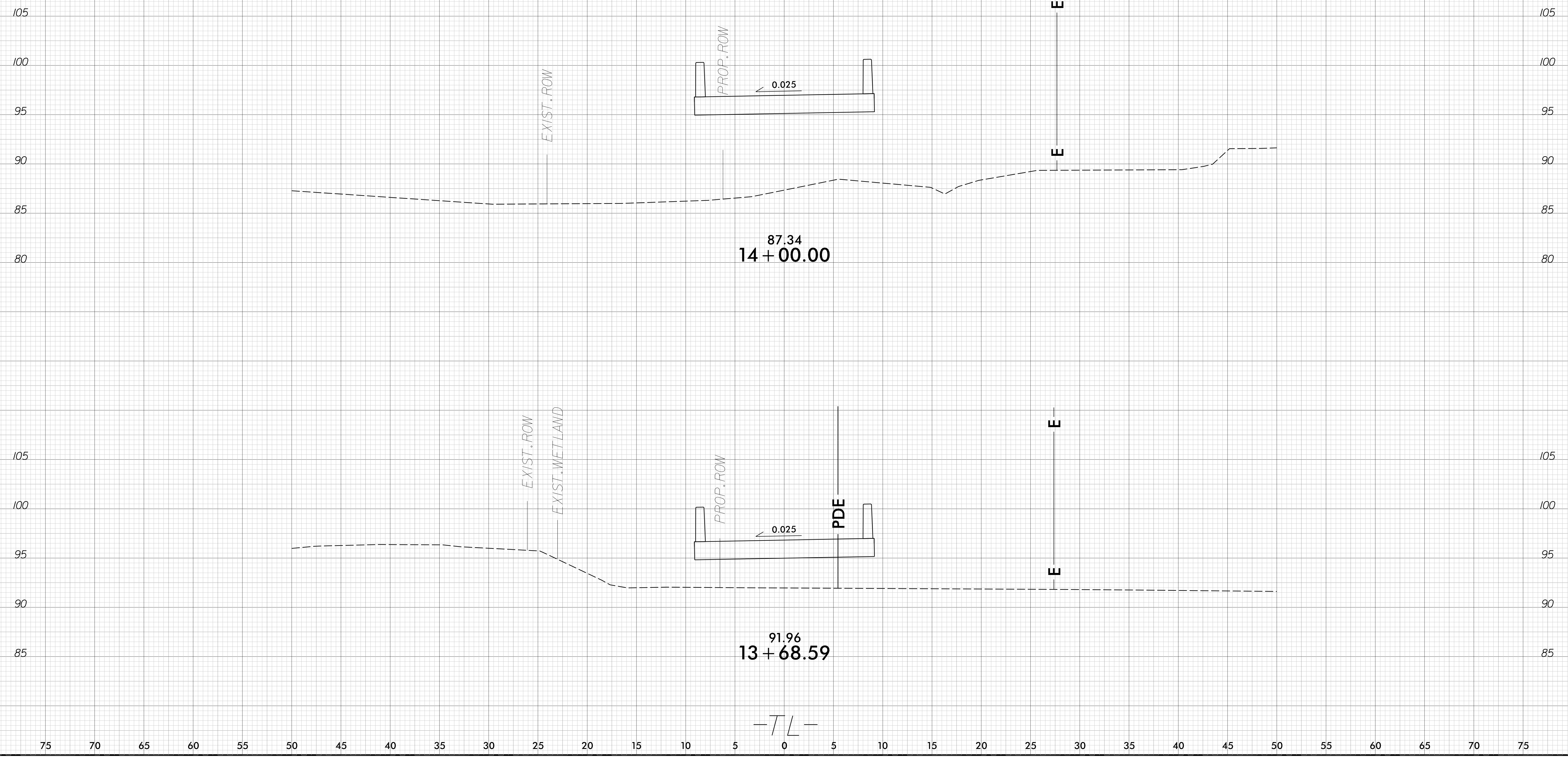
BEGIN BRIDGE -TL- STA. 13+68.59



-TL-

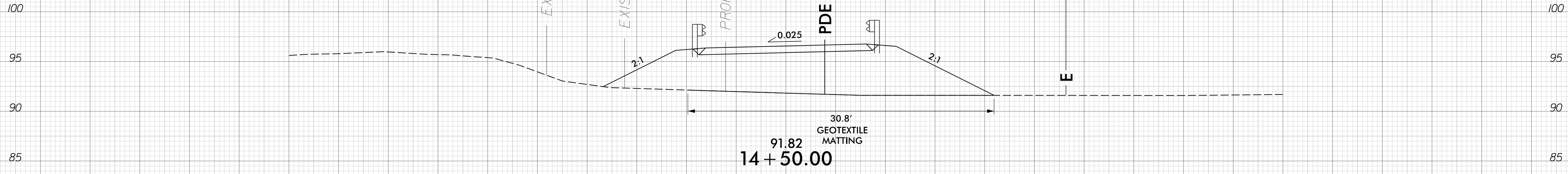
75 70 65 60 55 50 45 40 35 30 25 20 15 10 5 0 5 10 15 20 25 30 35 40 45 50 55 60 65 70 75

75 70 65 60 55 50 45 40 35 30 25 20 15 10 5 0 5 10 15 20 25 30 35 40 45 50 55 60 65 70 75

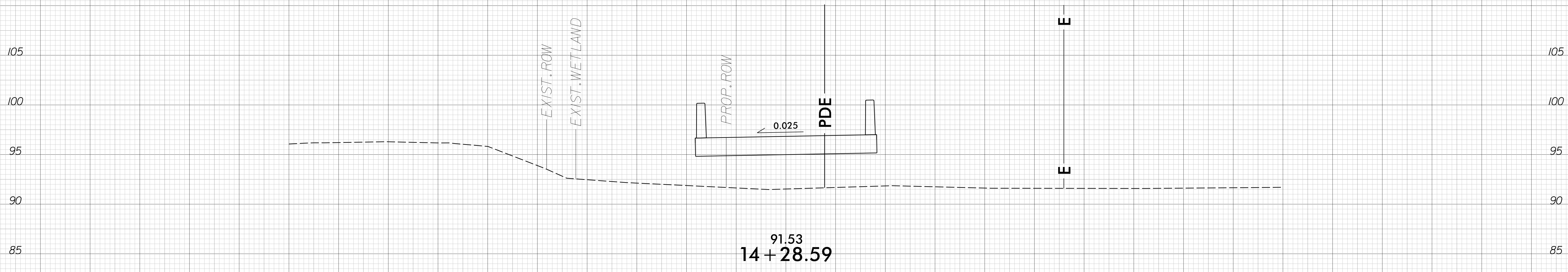


75 70 65 60 55 50 45 40 35 30 25 20 15 10 5 0 5 10 15 20 25 30 35 40 45 50 55 60 65 70 75

75 70 65 60 55 50 45 40 35 30 25 20 15 10 5 0 5 10 15 20 25 30 35 40 45 50 55 60 65 70 75

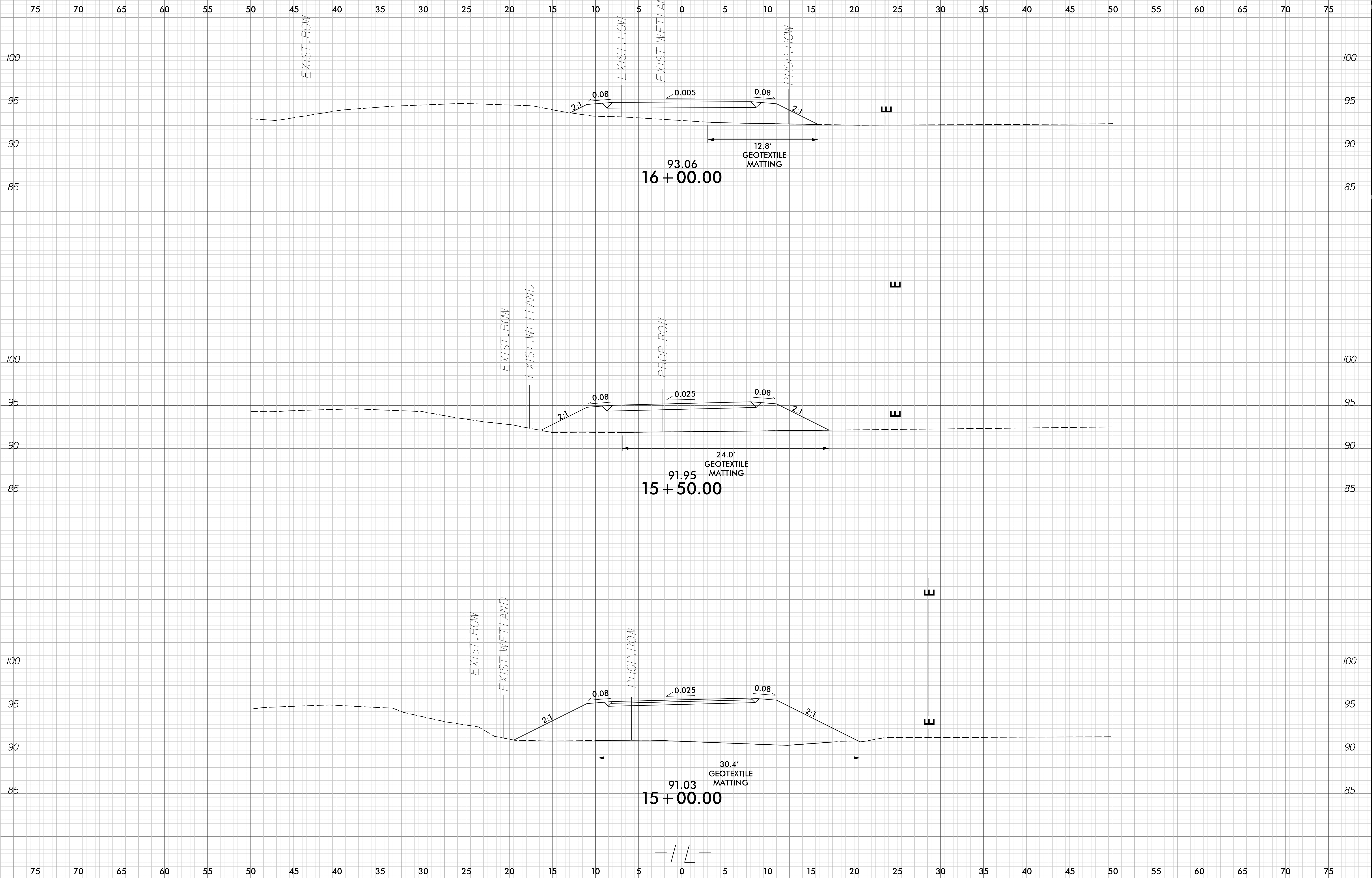


END BRIDGE -TL- STA. 14+28.59



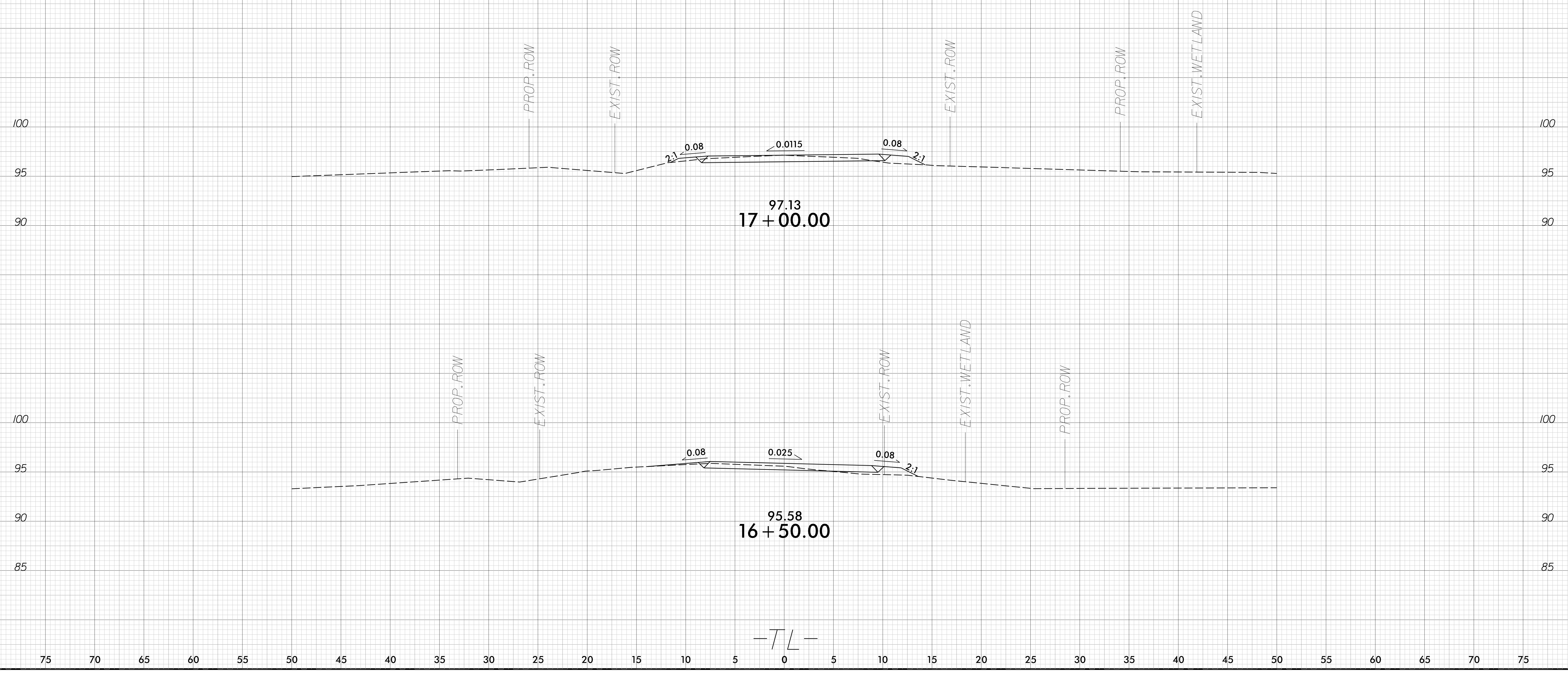
-TL-

75 70 65 60 55 50 45 40 35 30 25 20 15 10 5 0 5 10 15 20 25 30 35 40 45 50 55 60 65 70 75

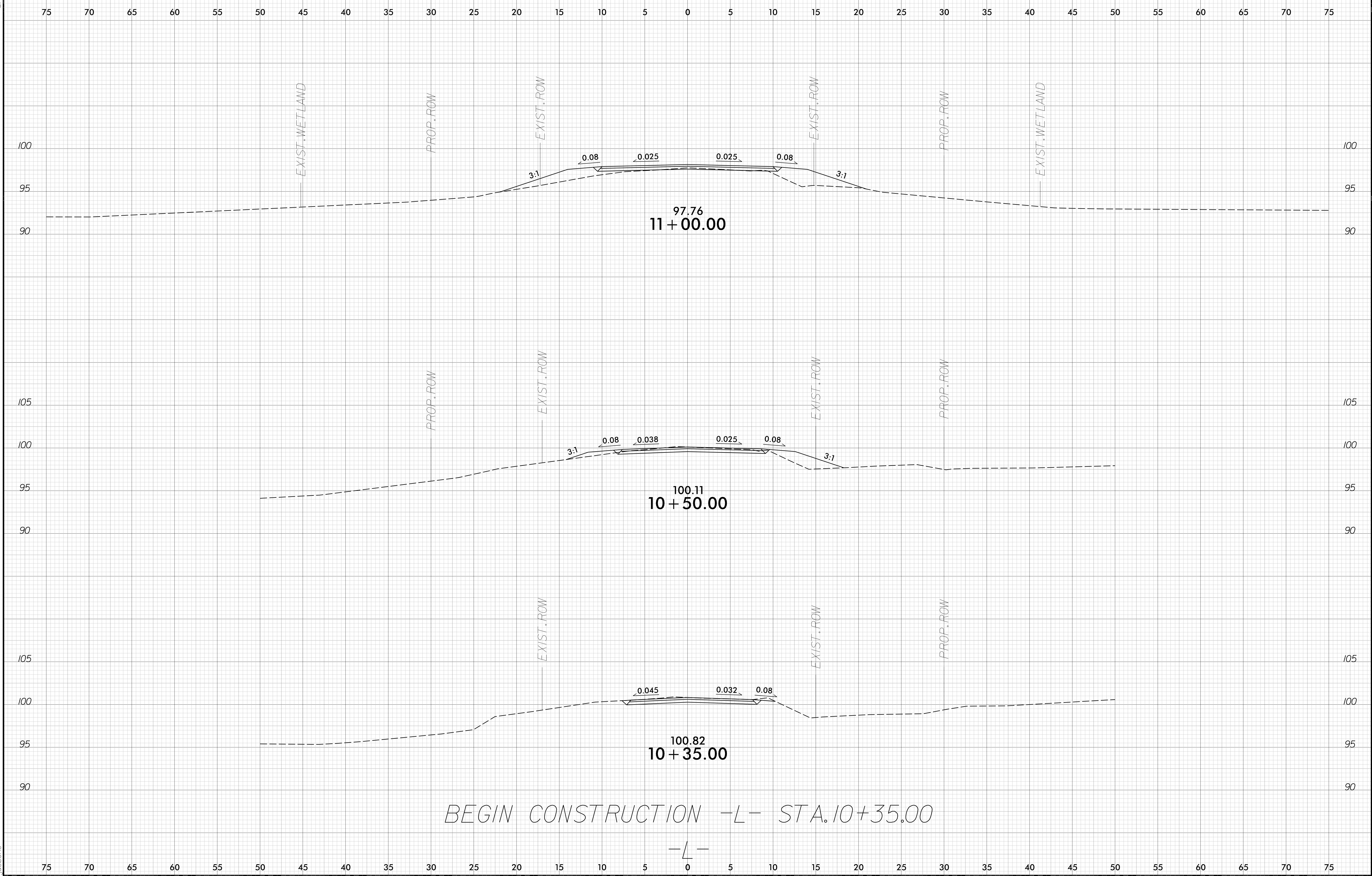


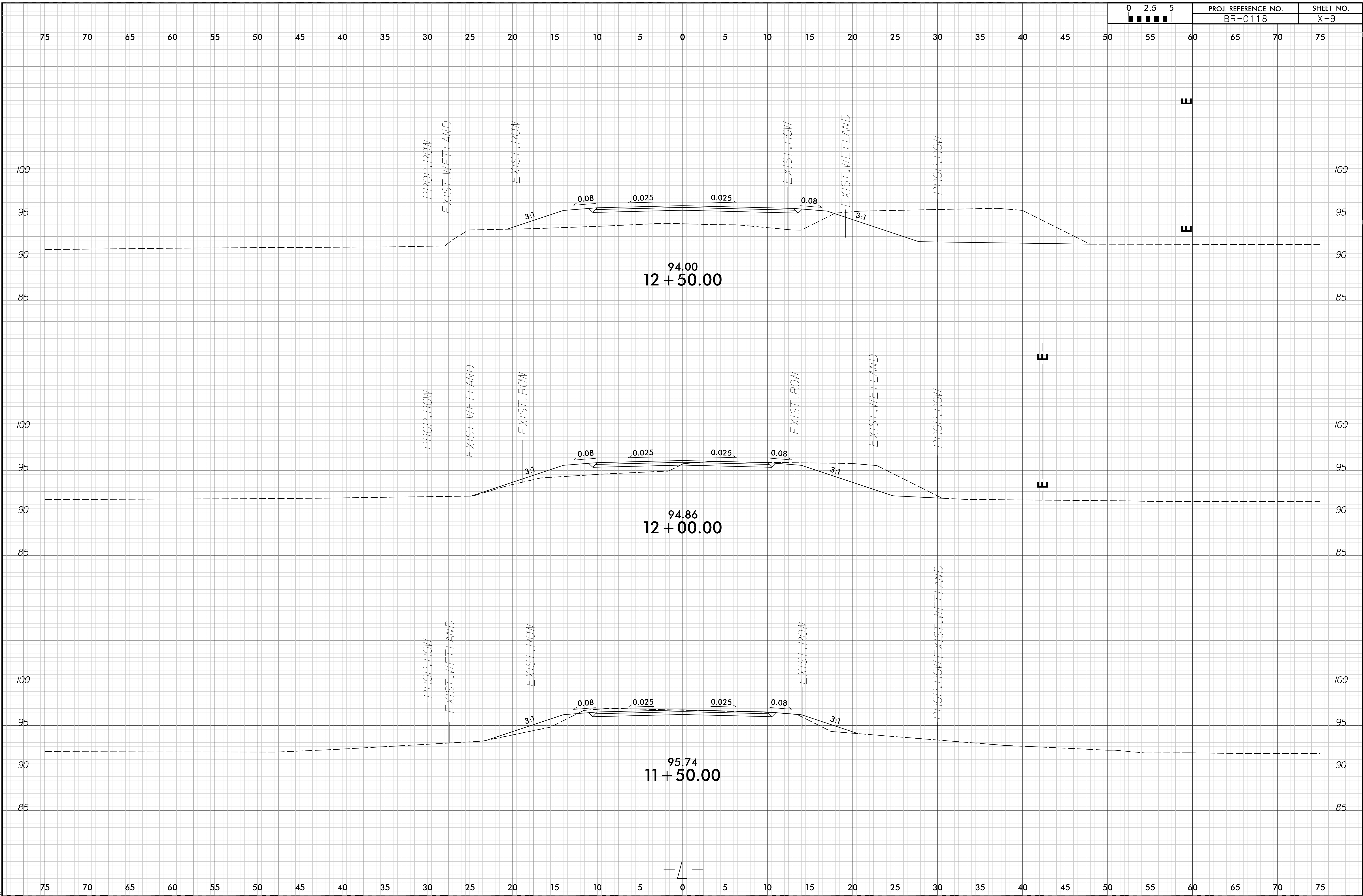
75 70 65 60 55 50 45 40 35 30 25 20 15 10 5 0 5 10 15 20 25 30 35 40 45 50 55 60 65 70 75

END CONSTRUCTION -TL- STA. 17+09.22



75 70 65 60 55 50 45 40 35 30 25 20 15 10 5 0 5 10 15 20 25 30 35 40 45 50 55 60 65 70 75



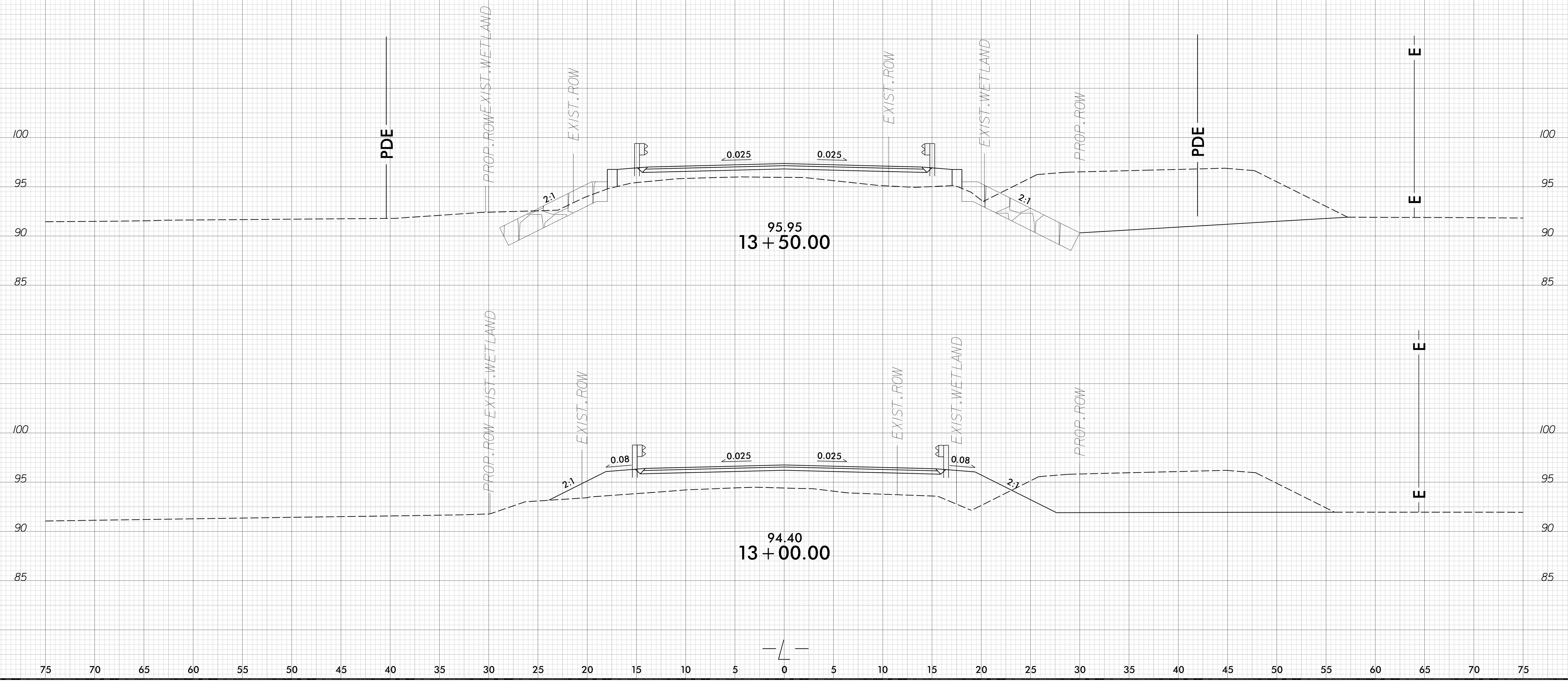


6/23/16

0 2.5 5	PROJ. REFERENCE NO.	SHEET NO.
■■■■■	BR-0118	X-10

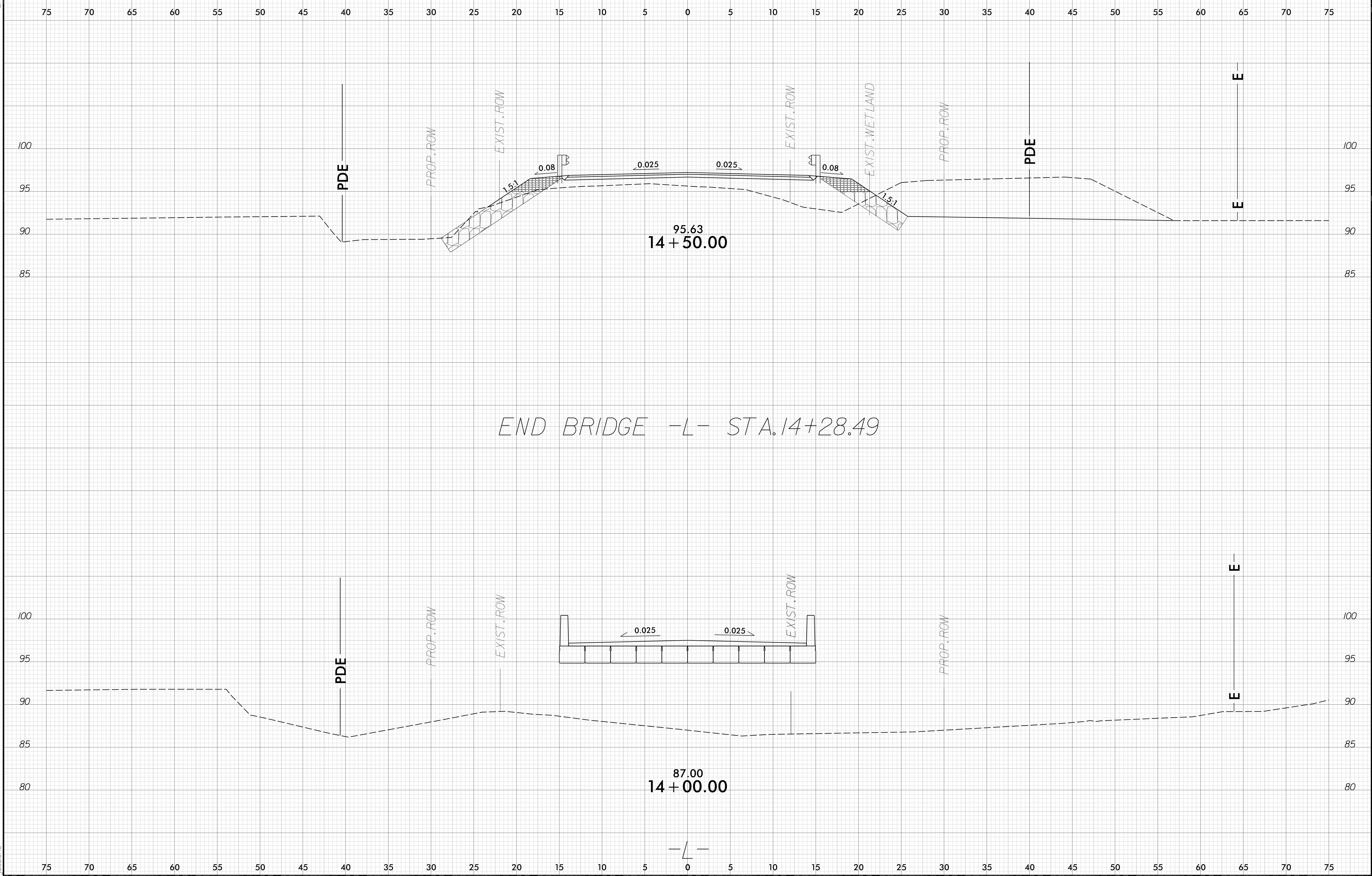
75 70 65 60 55 50 45 40 35 30 25 20 15 10 5 0 5 10 15 20 25 30 35 40 45 50 55 60 65 70 75

BEGIN BRIDGE -L- STA. 13+56.24



04-MAR-2020 15:36
BR-0118 Proj-App.dgn
ldebone

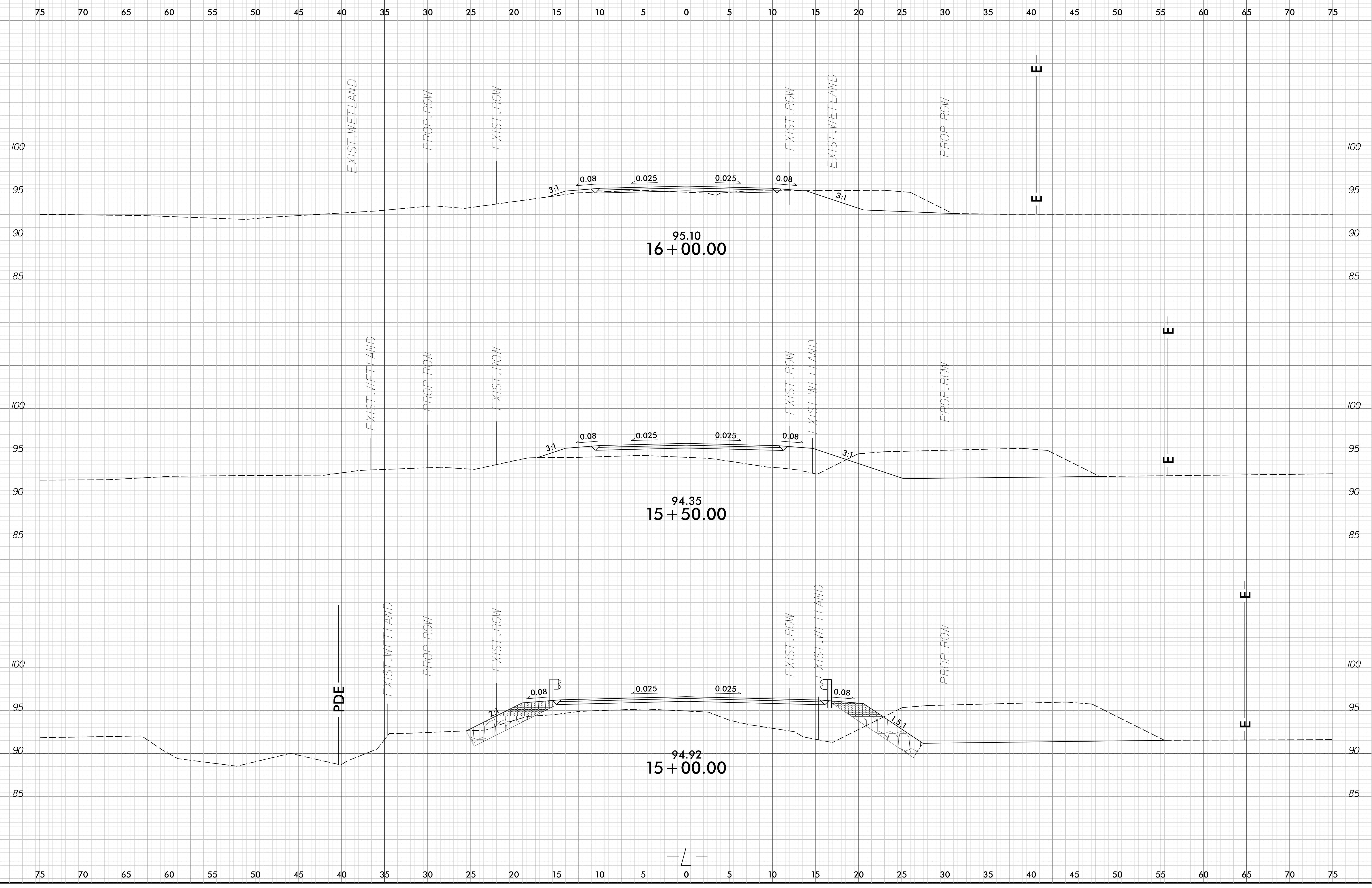
75 70 65 60 55 50 45 40 35 30 25 20 15 10 5 0 5 10 15 20 25 30 35 40 45 50 55 60 65 70 75



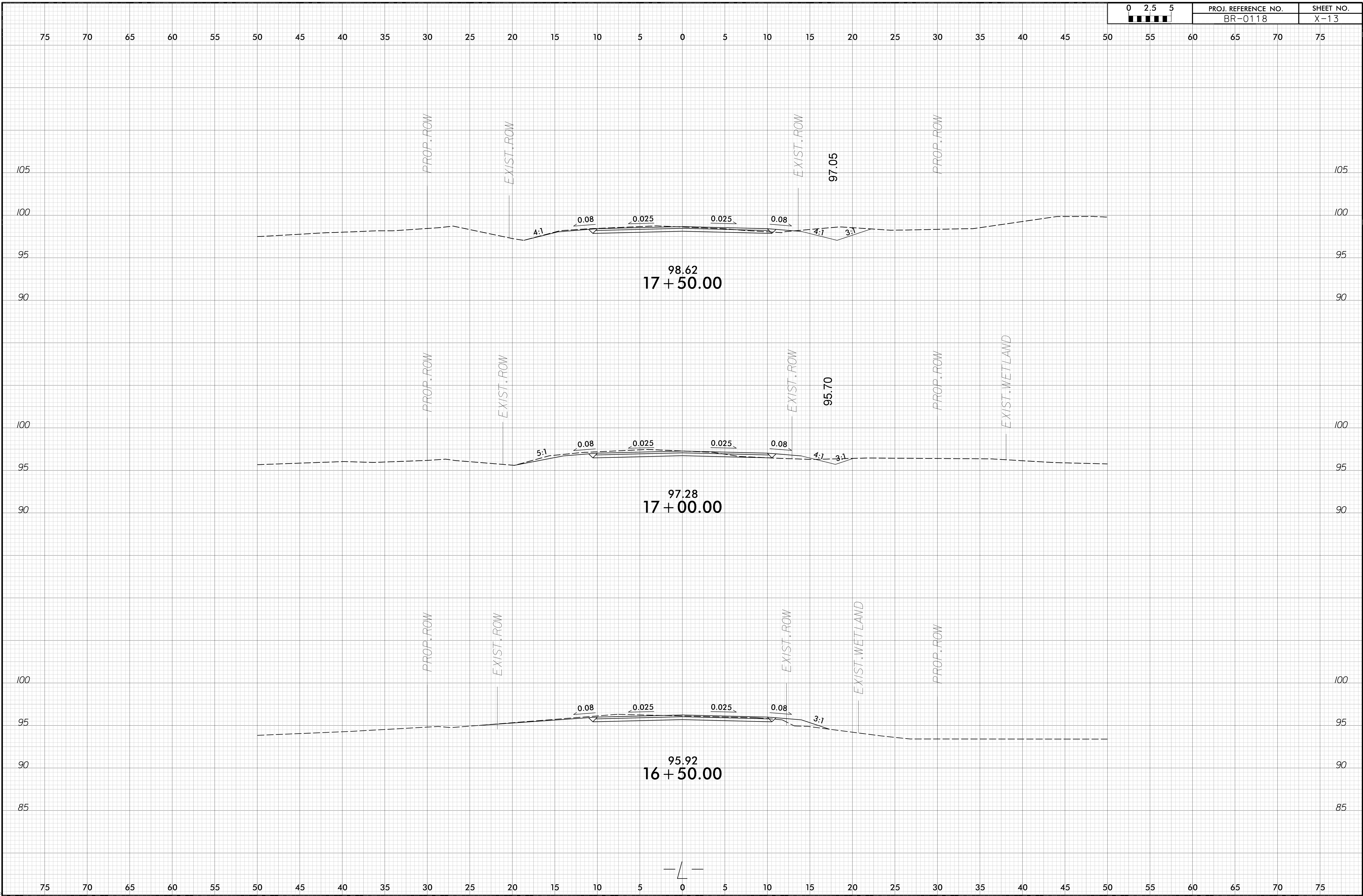
END BRIDGE -L- STA. 14+28.49

6/23/16

0 2.5 5	PROJ. REFERENCE NO.	SHEET NO.
	BR-0118	X-12

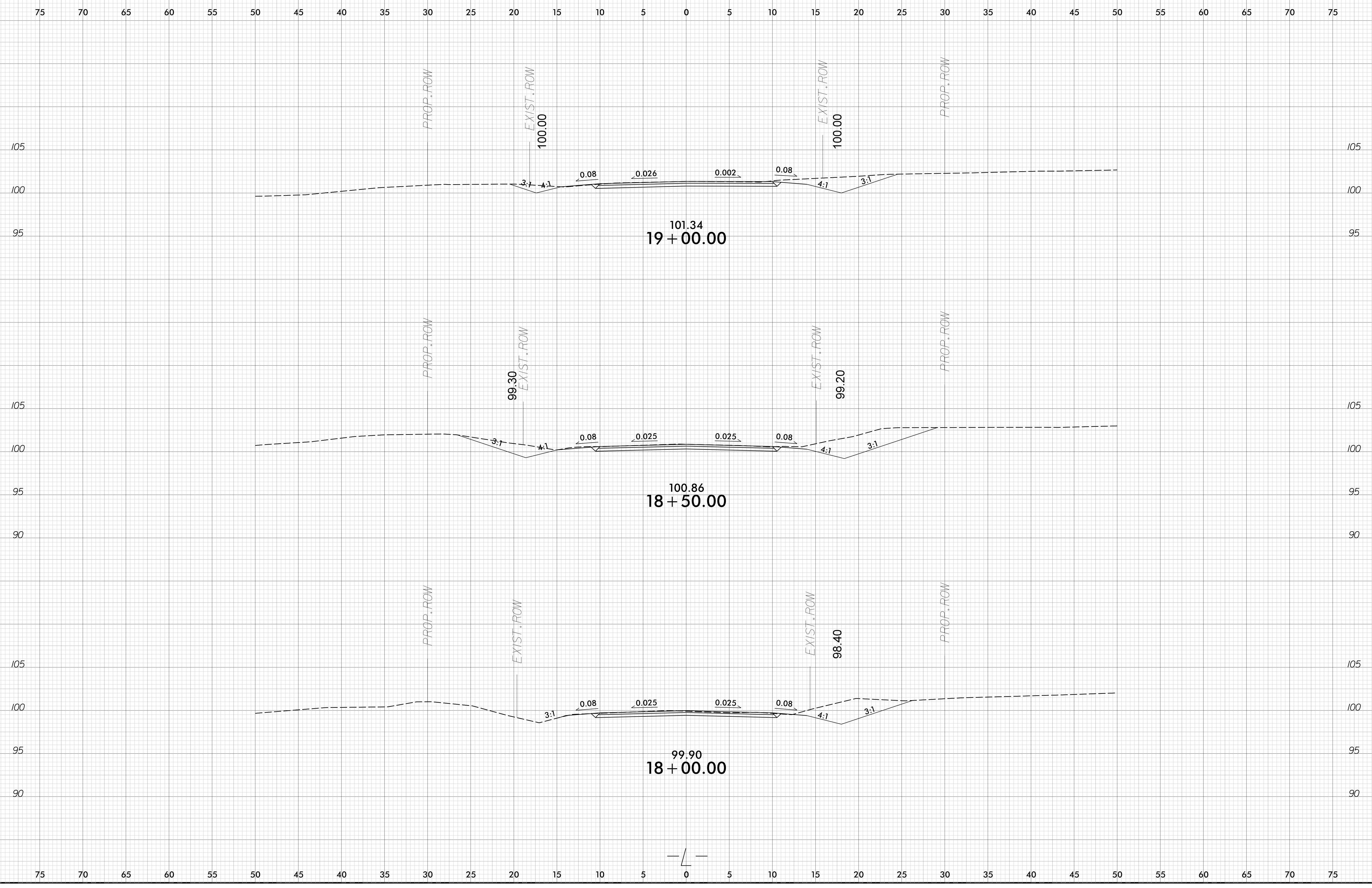


04-MAR-2020 15:36
BR-0118 Proj-App.dgn
idebone



6/23/16

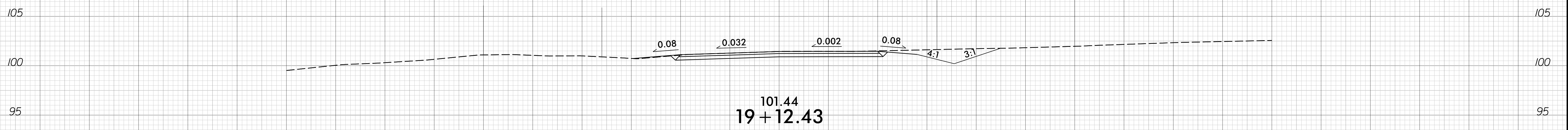
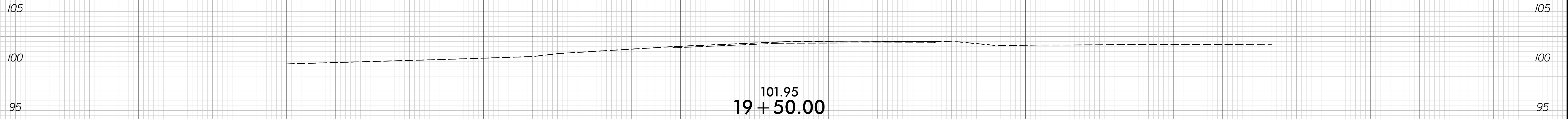
0 2.5 5	PROJ. REFERENCE NO.	SHEET NO.
	BR-0118	X-14



04-MAR-2020 15:36
BR-0118 Proj-App.dgn
debone

75 70 65 60 55 50 45 40 35 30 25 20 15 10 5 0 5 10 15 20 25 30 35 40 45 50 55 60 65 70 75

END MILLING & RESURFACING
-L- STA. 19+65.61



END CONSTRUCTION -L- STA. 19+12.43
BEGIN MILLING & RESURFACING

-L-

75 70 65 60 55 50 45 40 35 30 25 20 15 10 5 0 5 10 15 20 25 30 35 40 45 50 55 60 65 70 75