

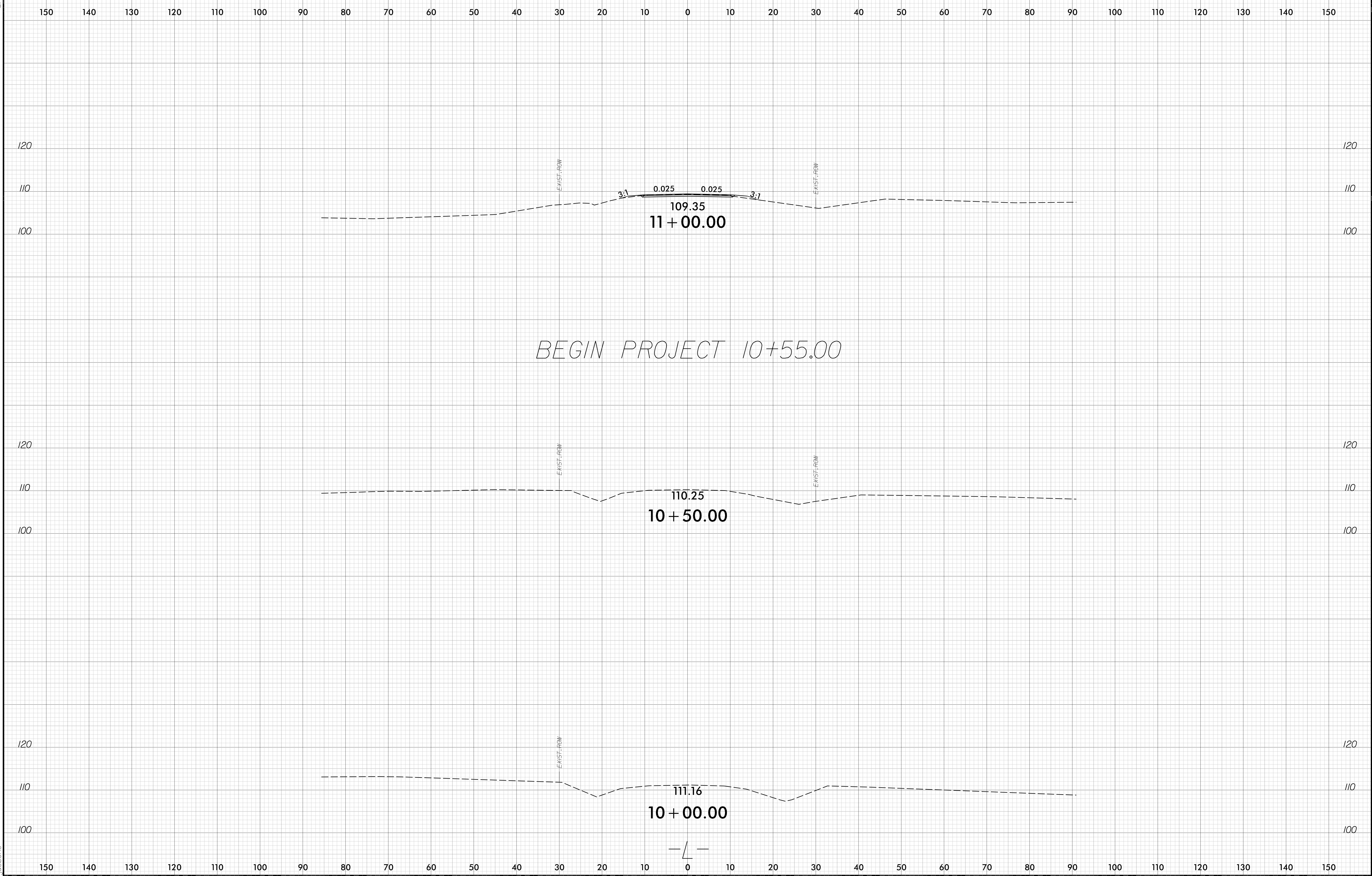
STATE OF NORTH CAROLINA
 DIVISION OF HIGHWAYS

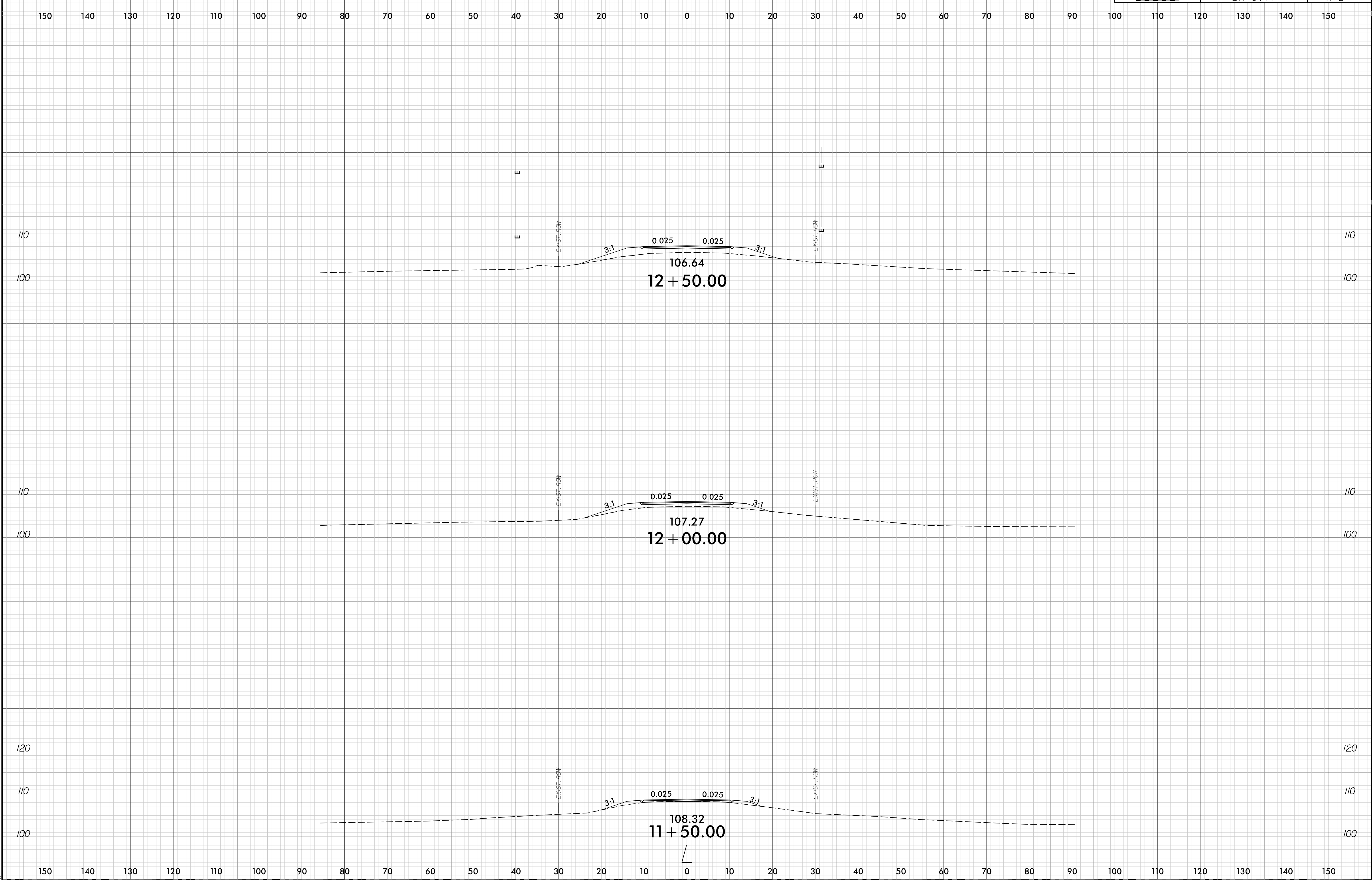
CROSS-SECTION SUMMARY

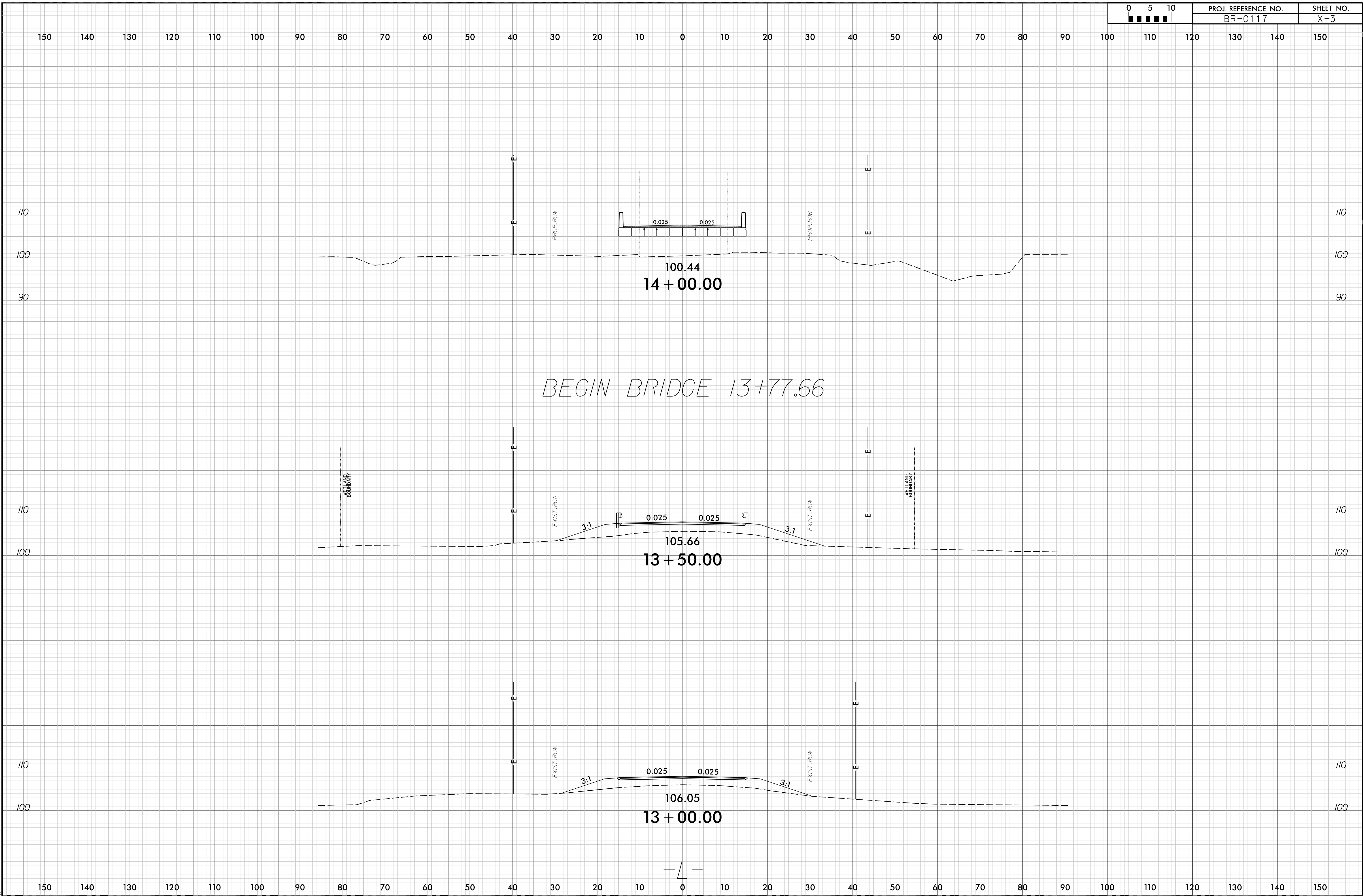
Station	Uncl. Exc.	Embt
-L-	(cu. yd.)	(cu. yd.)
10+00.00	0	0
10+50.00	0	0
10+55.00	0	0
11+00.00	0	3
11+50.00	0	11
12+00.00	0	38
12+50.00	0	77
13+00.00	0	131
13+50.00	0	188
13+77.66	0	116
14+75.03	0	0
15+00.00	0	95
15+50.00	0	160
16+00.00	5	89
16+50.00	12	33
17+00.00	9	13
17+50.00	4	4
17+55.00	0	0

Note: Approximate quantities only. Unclassified Excavation, Borrow Excavation, Fine Grading, Clearing and Grubbing, and Removal of Existing Pavement will be paid for at the contract lump sum price for "Grading."

Note: Embankment column does not include backfill for undercut.

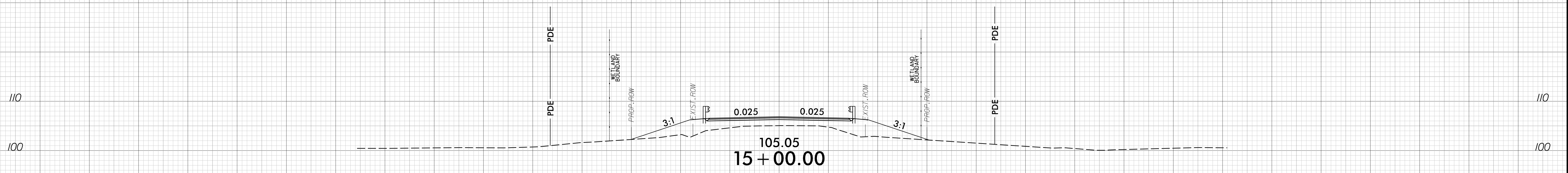
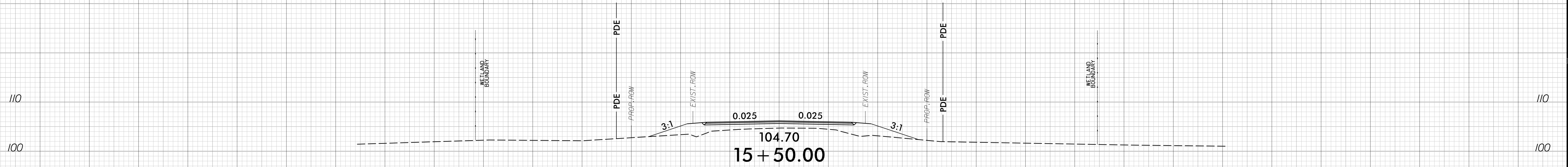




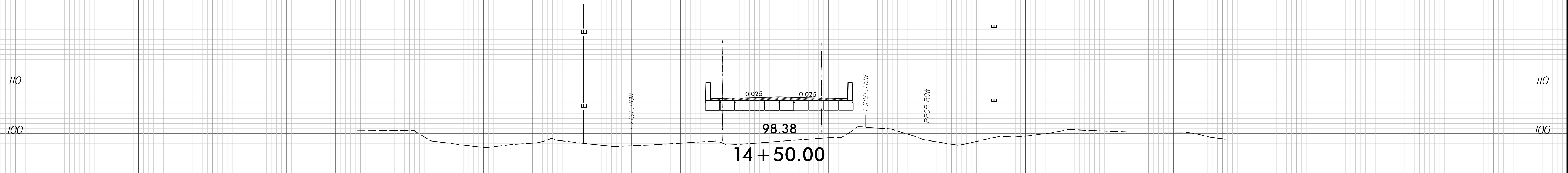


6/23/16

150 140 130 120 110 100 90 80 70 60 50 40 30 20 10 0 10 20 30 40 50 60 70 80 90 100 110 120 130 140 150



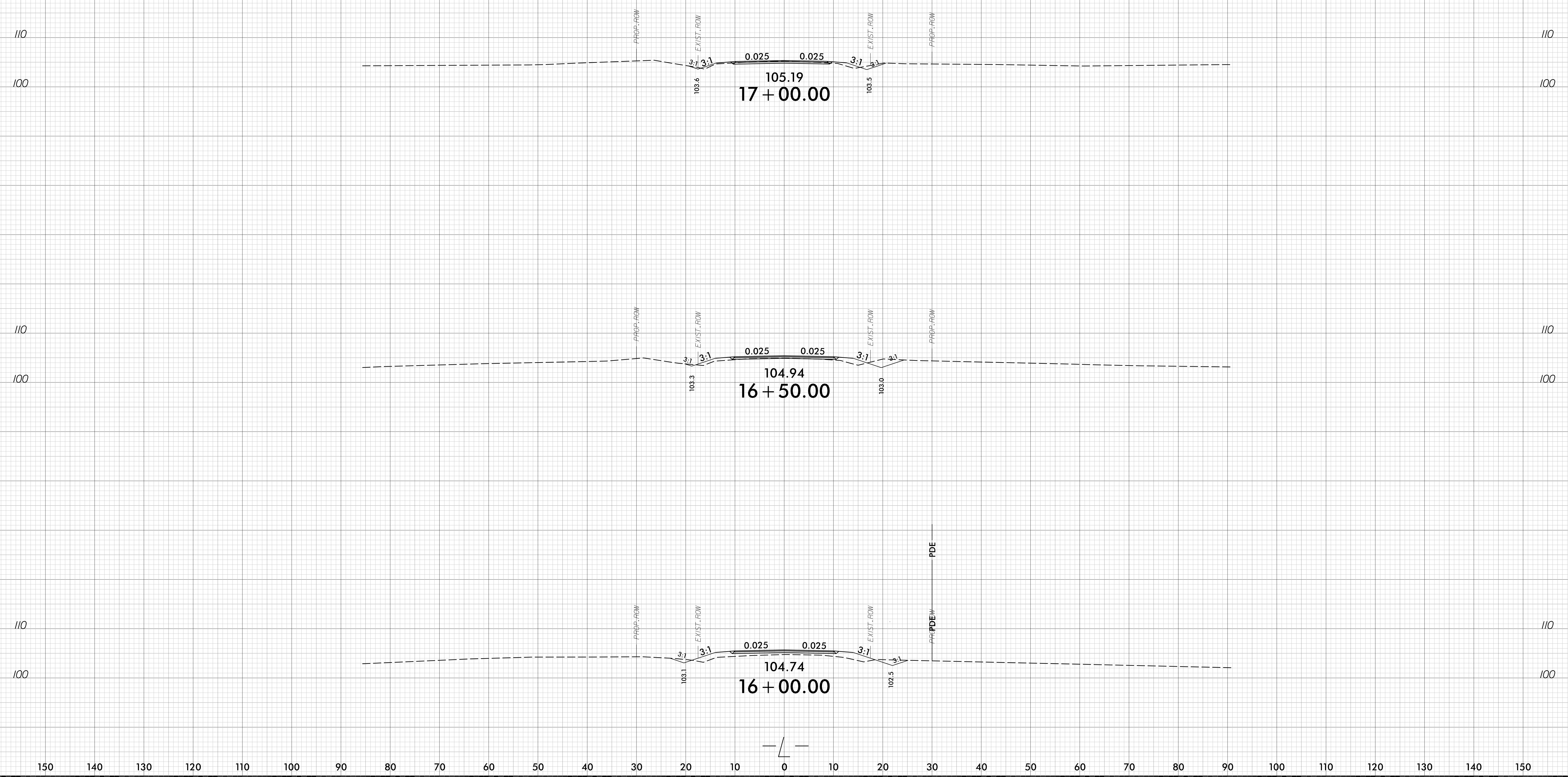
END BRIDGE 14+75.03



150 140 130 120 110 100 90 80 70 60 50 40 30 20 10 0 10 20 30 40 50 60 70 80 90 100 110 120 130 140 150

19-FEB-2020 05:12
BR-0117 Proj-App.dgn
idebone

150 140 130 120 110 100 90 80 70 60 50 40 30 20 10 0 10 20 30 40 50 60 70 80 90 100 110 120 130 140 150



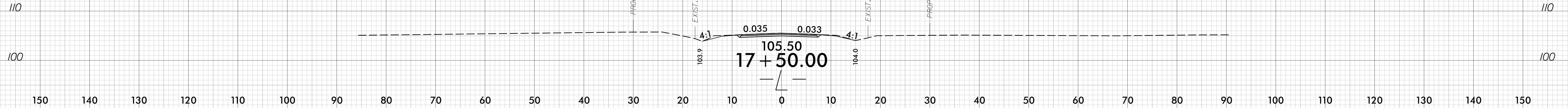
150 140 130 120 110 100 90 80 70 60 50 40 30 20 10 0 10 20 30 40 50 60 70 80 90 100 110 120 130 140 150

6/23/16

0 5 10	PROJ. REFERENCE NO.	SHEET NO.
■■■■■	BR-0117	X-6

150 140 130 120 110 100 90 80 70 60 50 40 30 20 10 0 10 20 30 40 50 60 70 80 90 100 110 120 130 140 150

END PROJECT 17+55.00



19-FEB-2020 05:12
BR-0117 Proj-AP1.dgn
idebone