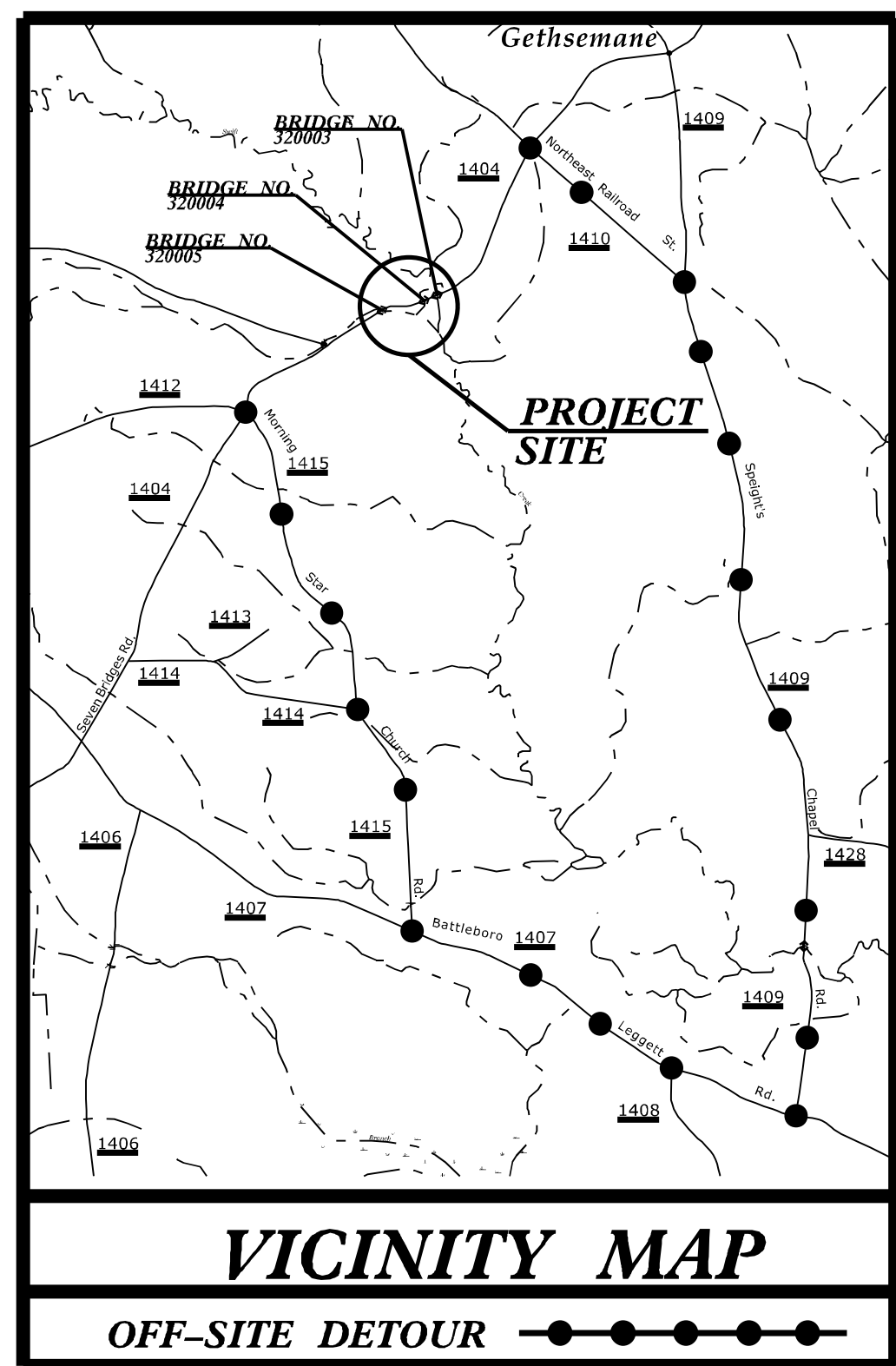


TIP PROJECT: BR-0111

See Sheet 1-A For Index of Sheets
See Sheet 1-B For Conventional Symbols
See Sheet 1C-1 TO 1C-2 For Survey Control Sheets



STATE OF NORTH CAROLINA DIVISION OF HIGHWAYS

PLAN FOR PROPOSED HIGHWAY EROSION CONTROL

EDGECOMBE COUNTY

**LOCATION: BRIDGE NO. 320003, 320004, AND 320004 OVER SWIFT CREEK
ON SR 1404 (SEVEN BRIDGES RD.)**

TYPE OF WORK: GRADING, DRAINAGE, PAVING & STRUCTURE

STATE	STATE PROJECT REFERENCE NO.	SHEET NO.	TOTAL SHEETS
N.C.	BR-0111	EC-1	
STATE PROJ. NO.	F.A. PROJ. NO.	DESCRIPTION	

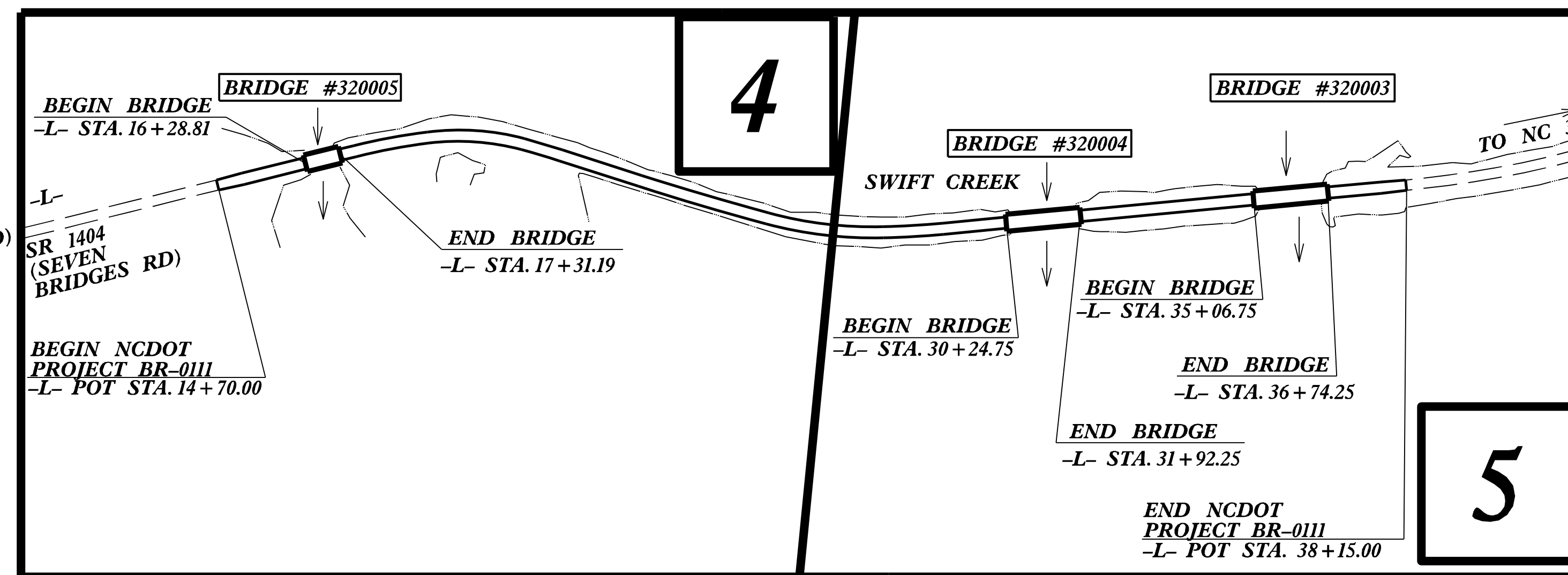
EROSION AND SEDIMENT CONTROL MEASURES

Sed. #	Description	Symbol
1630.03	Temporary Silt Ditch	
1630.05	Temporary Diversion	
1605.01	Temporary Silt Fence	
1606.01	Special Sediment Control Fence	
1622.01	Temporary Berms and Slope Drains	
1630.02	Silt Basin Type B	
1633.01	Temporary Rock Silt Check Type-A	
	Temporary Rock Silt Check Type-A with Matting and Polyacrylamide (PAM)	
1633.02	Temporary Rock Silt Check Type-B	
	Wattle/Coir Fiber Wattle	
	Wattle/Coir Fiber Wattle with Polyacrylamide (PAM)	
1634.01	Temporary Rock Sediment Dam Type-A	
1634.02	Temporary Rock Sediment Dam Type-B	
1635.01	Rock Pipe Inlet Sediment Trap Type-A	
1635.02	Rock Pipe Inlet Sediment Trap Type-B	
1630.04	Stilling Basin	
1630.06	Special Stilling Basin	
	Rock Inlet Sediment Trap:	
1632.01	Type A	
1632.02	Type B	
1632.03	Type C	
	Skimmer Basin	
	Tiered Skimmer Basin	
	Infiltration Basin	

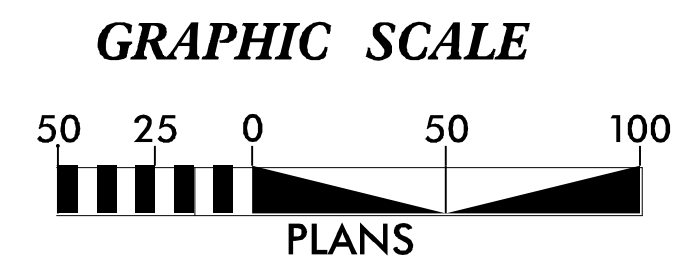
THIS PROJECT CONTAINS EROSION CONTROL PLANS FOR CLEARING AND GRUBBING PHASE OF CONSTRUCTION.

ENVIRONMENTALLY SENSITIVE AREA(S) EXIST ON THIS PROJECT
Refer To E. C. Special Provisions for Special Considerations.

THIS PROJECT HAS BEEN DESIGNED TO SENSITIVE WATERSHED STANDARDS.



NOTE:
DESIGN EXCEPTION REQUIRED FOR THE HORIZONTAL CURVE RADIUS AND HORIZONTAL STOPPING SIGHT DISTANCE



THESE EROSION AND SEDIMENT CONTROL PLANS COMPLY WITH THE APPLICABLE REGULATIONS SET FORTH BY THE NCG-010000 GENERAL CONSTRUCTION PERMIT EFFECTIVE APRIL 1, 2019 AND ISSUED BY THE NORTH CAROLINA DEPARTMENT OF ENVIRONMENTAL QUALITY DIVISION OF WATER RESOURCES.

1223 Jones Franklin Rd.
Raleigh, N.C. 27606
License No. F-0377
Bus: 919 851 8077
Fax: 919 851 8107

TRANSPORTATION PLANNING/DESIGN - BRIDGE/STRUCTURE DESIGN
CIVIL/SITE DESIGN - GIS/GPS - CONSTRUCTION OBSERVATION

Designed by:

FORREST BROOKS, EI **4039**

NAME LEVEL III CERTIFICATION NO.

Roadway Standard Drawings

The following roadway english standards as appear in "Roadway Standard Drawings"- Roadway Design Unit - N. C. Department of Transportation - Raleigh, N. C., dated January 2018 and the latest revision thereto are applicable to this project and by reference hereby are considered a part of these plans.

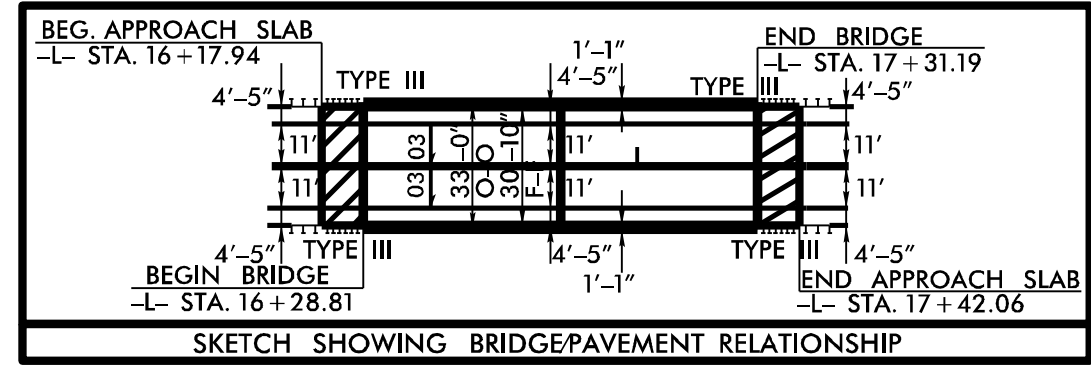
1604.01 Railroad Erosion Control Detail	1632.01 Rock Inlet Sediment Trap Type A
1605.01 Temporary Silt Fence	1632.02 Rock Inlet Sediment Trap Type B
1606.01 Special Sediment Control Fence	1632.03 Rock Inlet Sediment Trap Type C
1607.01 Gravel Construction Entrance	1633.01 Temporary Rock Silt Check Type A
1622.01 Temporary Berms and Slope Drains	1633.02 Temporary Rock Silt Check Type B
1630.01 Riser Basin	1634.01 Temporary Rock Sediment Dam Type A
1630.02 Silt Basin Type B	1634.02 Temporary Rock Sediment Dam Type B
1630.03 Temporary Silt Ditch	1635.01 Rock Pipe Inlet Sediment Trap Type A
1630.04 Stilling Basin	1635.02 Rock Pipe Inlet Sediment Trap Type B
1630.05 Temporary Diversion	1640.01 Coir Fiber Baffle
1630.06 Special Stilling Basin	1645.01 Temporary Stream Crossing
1631.01 Matting Installation	

DIVISION OF HIGHWAYS
STATE OF NORTH CAROLINA

PROJECT REFERENCE NO.	SHEET NO.
<i>BR-0111</i>	<i>EC-2</i>
ROADWAY DESIGN ENGINEER	HYDRAULICS ENGINEER

SOIL STABILIZATION TIMEFRAMES

<i>SITE DESCRIPTION</i>	<i>STABILIZATION TIME</i>	<i>TIMEFRAME EXCEPTIONS</i>
PERIMETER DIKES, SWALES, DITCHES AND SLOPES	7 DAYS	NONE
HIGH QUALITY WATER (HOW) ZONES	7 DAYS	NONE
SLOPES STEEPER THAN 3:1	7 DAYS	IF SLOPES ARE 10' OR LESS IN LENGTH AND ARE NOT STEEPER THAN 2:1, 14 DAYS ARE ALLOWED.
SLOPES 3:1 OR FLATTER	14 DAYS	7 DAYS FOR SLOPES GREATER THAN 50' IN LENGTH.
ALL OTHER AREAS WITH SLOPES FLATTER THAN 4:1	14 DAYS	NONE, EXCEPT FOR PERIMETERS AND HOW ZONES.



CLEARING AND GRUBBING
EROSION CONTROL FOR
CONSTRUCTION SHEET 4

NOTE:
PLACE TEMPORARY ROCK SEDIMENT DAMS TYPE - B
AND TEMPORARY ROCK SILT CHECKS TYPE - A AT
DRAINAGE OUTLETS.

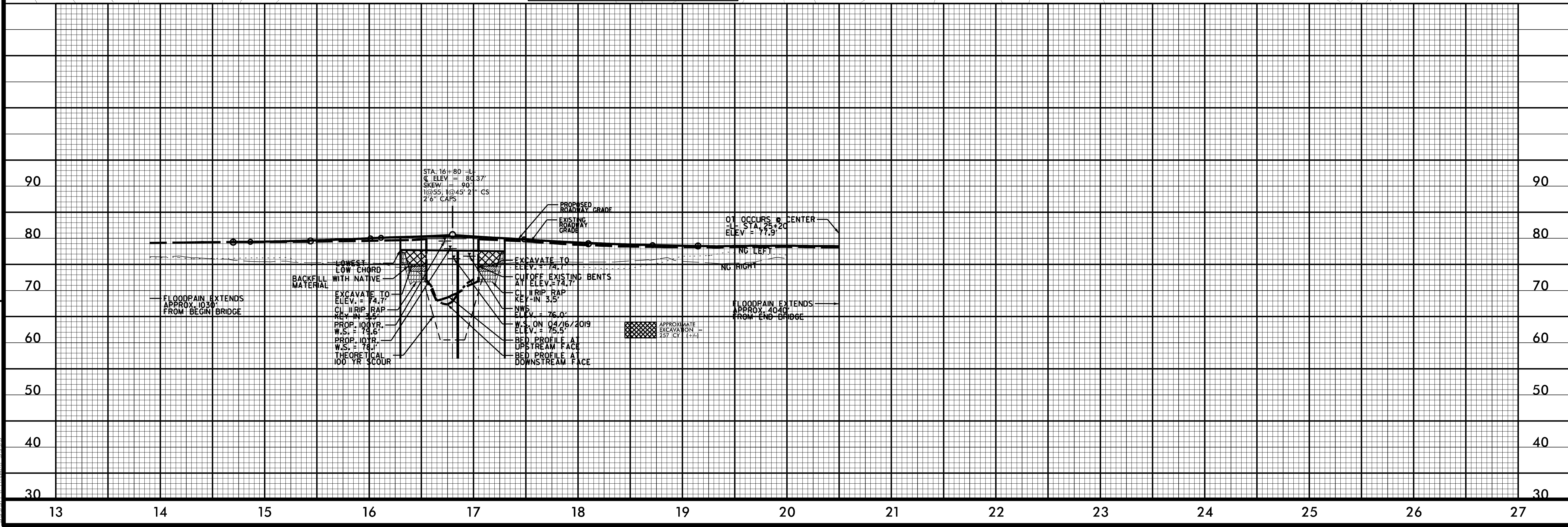
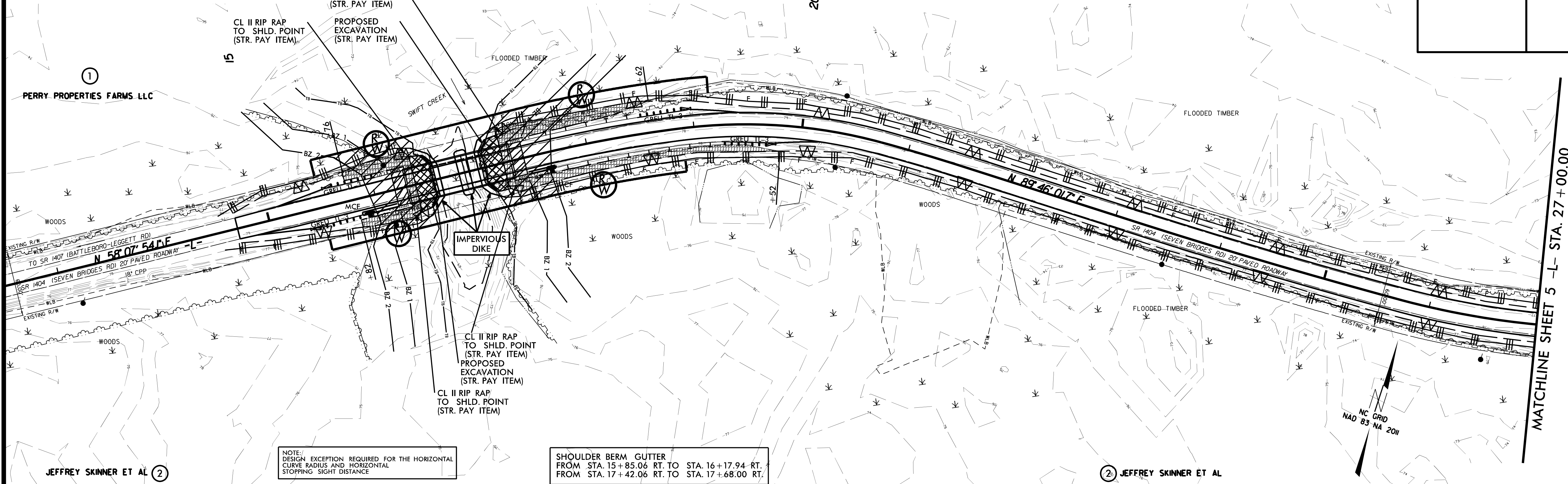
 ENVIRONMENTALLY SENSITIVE AREA
SEE PROJECT SPECIAL PROVISIONS

W ETHERILL ENGINEERING
1223 Jones Franklin Rd.
Raleigh, N.C. 27606
License No. F-0377
Bus: 919 851 8077
Fax: 919 851 8107

TRANSPORTATION PLANNING/DESIGN - BRIDGE/STRUCTURE DESIGN
CIVIL/SITE DESIGN - GIS/GPS - CONSTRUCTION OBSERVATION

RY PROPERTIES FARMS LLC

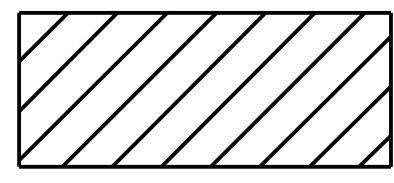
PROJECT REFERENCE NO. BR-0111	SHEET NO. EC-03/CONST.04
R/W SHEET NO.	
ROADWAY DESIGN ENGINEER	HYDRAULICS ENGINEER



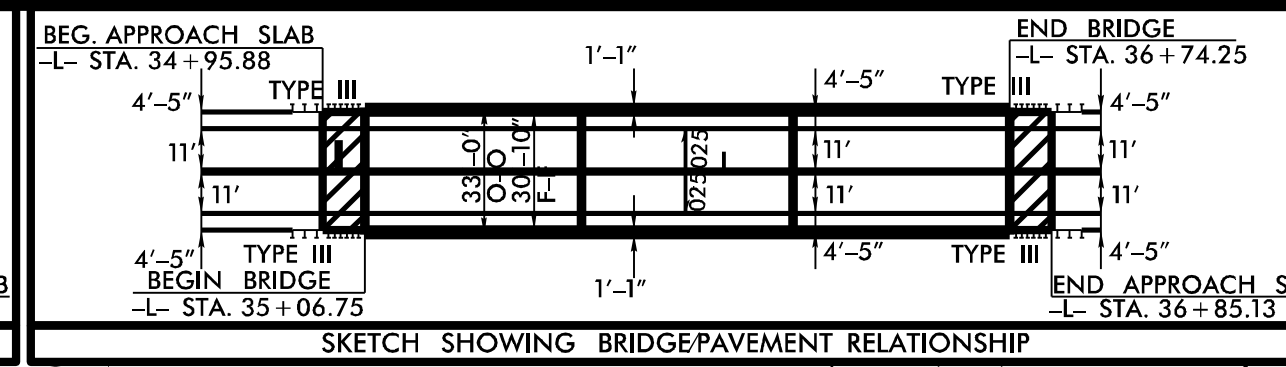
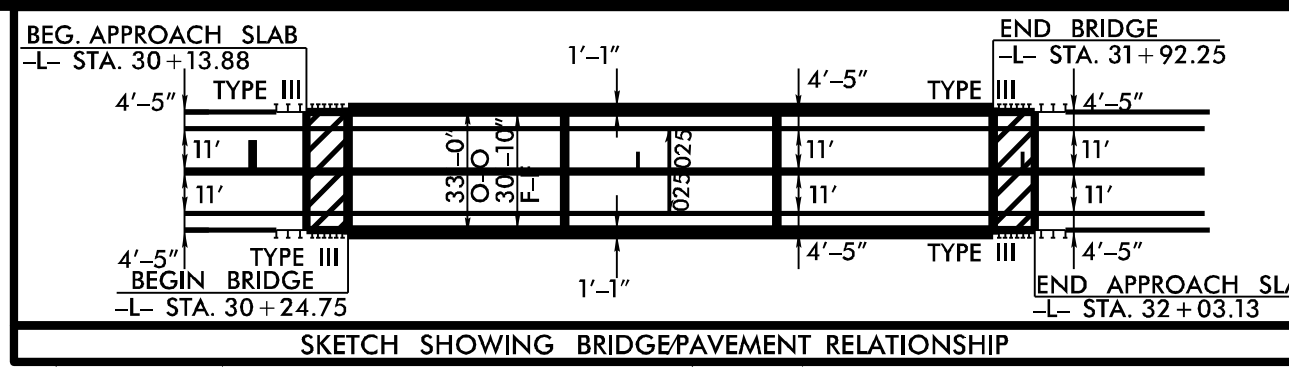
REVISIONS

SYSTEMS ENGINEERING
DONALDSON
ELECTRICAL

8/17/20



ENVIRONMENTALLY SENSITIVE AREA
SEE PROJECT SPECIAL PROVISIONS

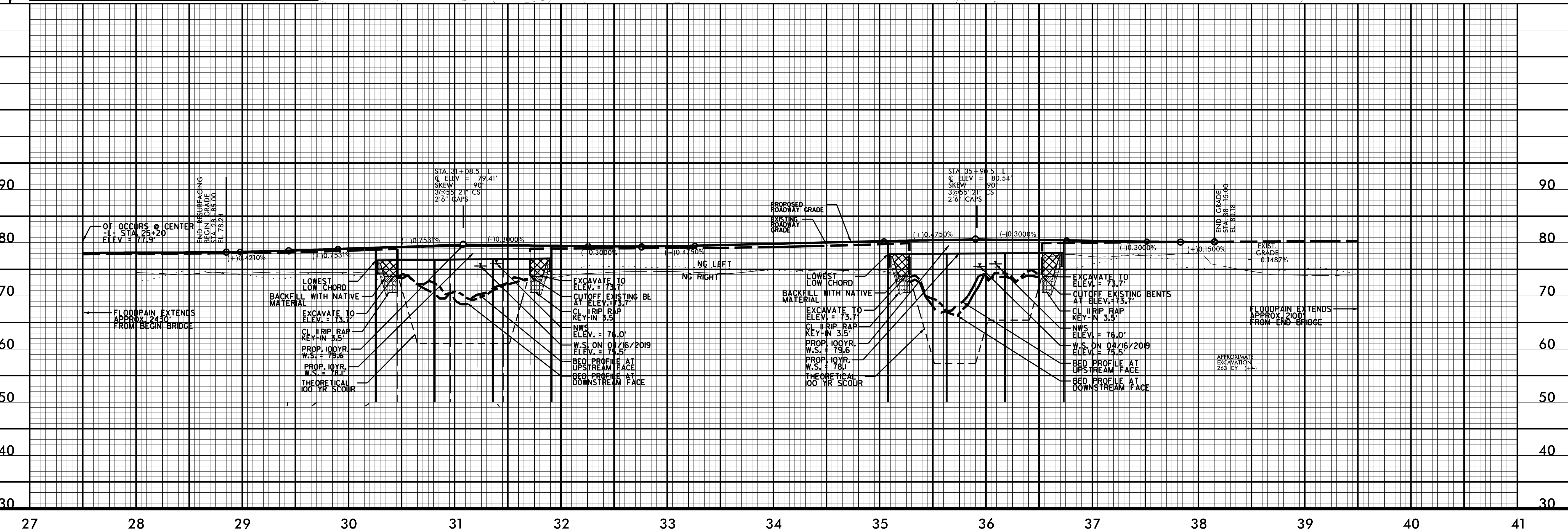
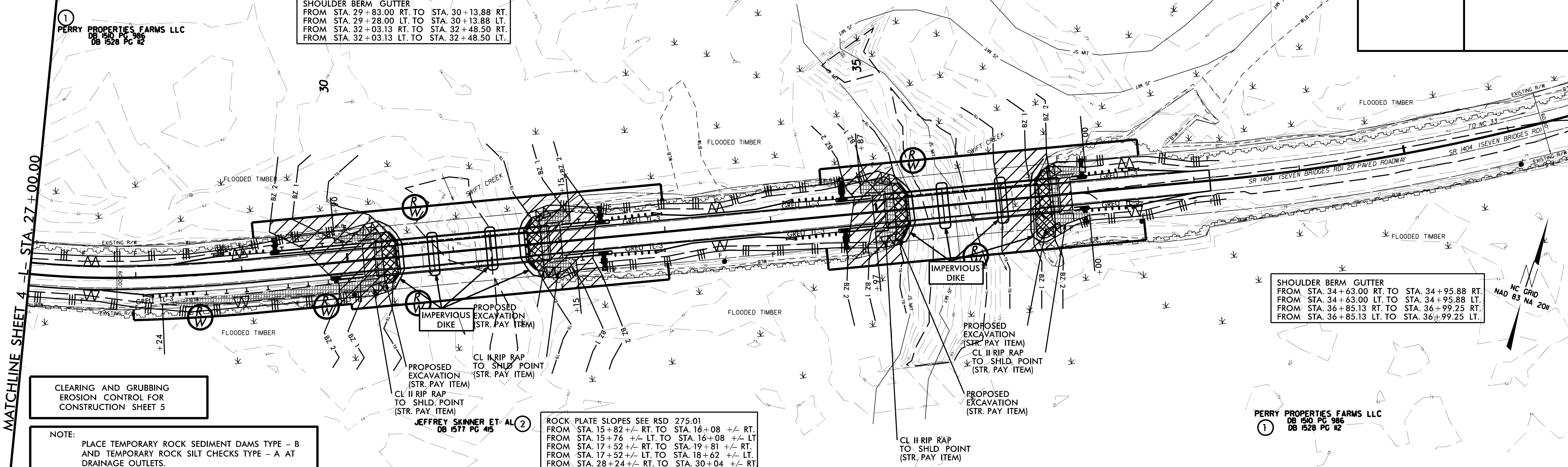


ETHERILL ENGINEERING
1223 Jones Franklin Rd.
Raleigh, N.C. 27606
License No. F-0377
Bus: 919 851 8077
Fax: 919 851 8107

PERRY PROPERTIES FARMS LLC
DB 150 PG 986
DB 152 PG 12

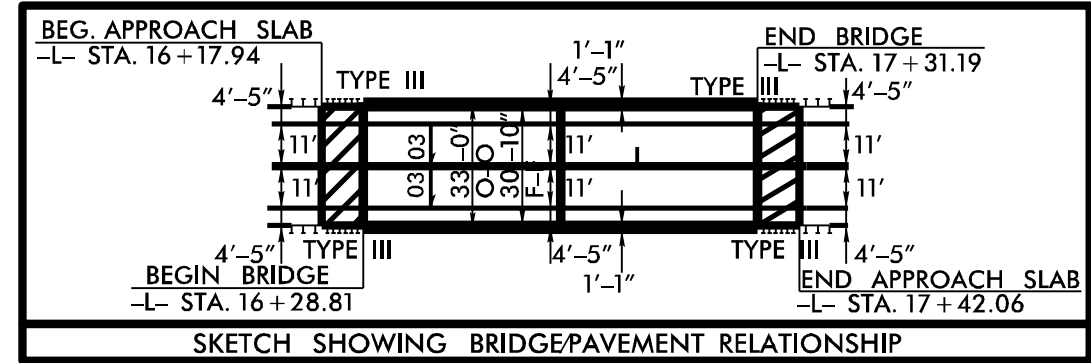
TRANSPORTATION PLANNING/DESIGN - BRIDGE/STRUCTURE DESIGN
CIVIL/SITE DESIGN - GIS/GPS - CONSTRUCTION OBSERVATION

PROJECT REFERENCE NO. BR-0111	SHEET NO. EC-04/CONST.05
R/W SHEET NO.	
ROADWAY DESIGN ENGINEER	HYDRAULICS ENGINEER



REVISIONS

SYSTEMS
8/17/20

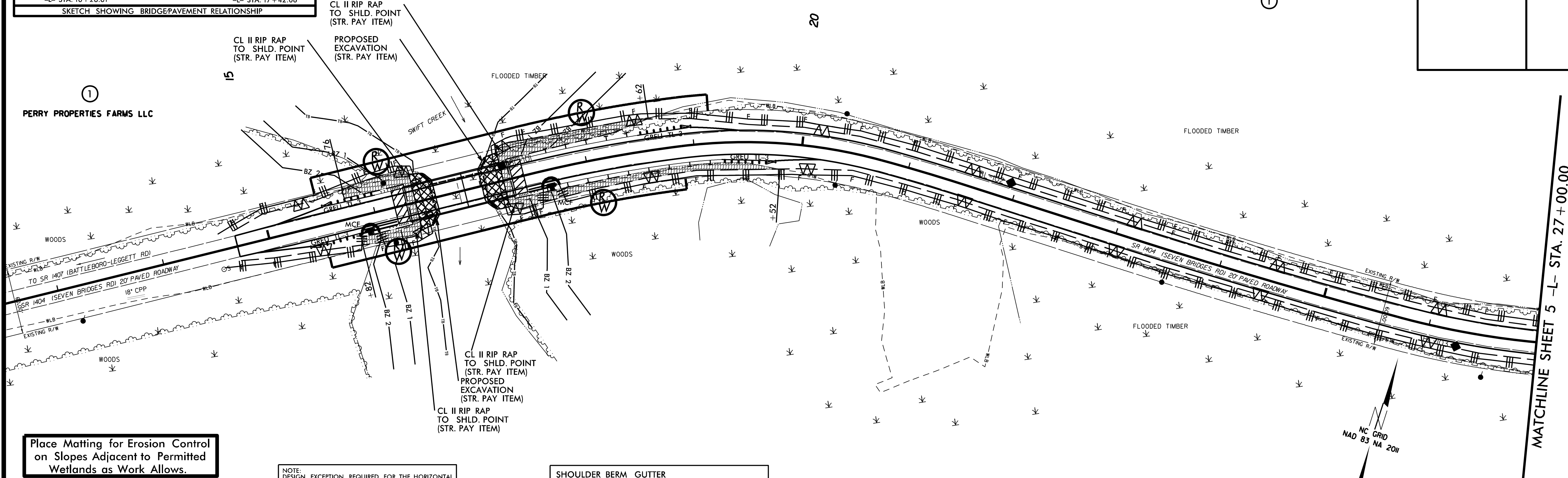


ROCK PLATE SLOPES SEE RSD 275.01
 FROM STA. 15+82 +/- RT. TO STA. 16+08 +/- RT.
 FROM STA. 15+76 +/- LT. TO STA. 16+08 +/- LT.
 FROM STA. 17+52 +/- RT. TO STA. 19+81 +/- RT.
 FROM STA. 17+52 +/- LT. TO STA. 18+62 +/- LT.
 FROM STA. 28+24 +/- RT. TO STA. 30+04 +/- RT.

ETHERILL ENGINEERING
 1223 Jones Franklin Rd.
 Raleigh, N.C. 27606
 License No. F-0377
 Bus: 919 851 8077
 Fax: 919 851 8107

PROJECT REFERENCE NO. BR-0111	SHEET NO. EC-05/CONST.04
R/W SHEET NO.	
ROADWAY DESIGN ENGINEER	HYDRAULICS ENGINEER

PERRY PROPERTIES FARMS LLC



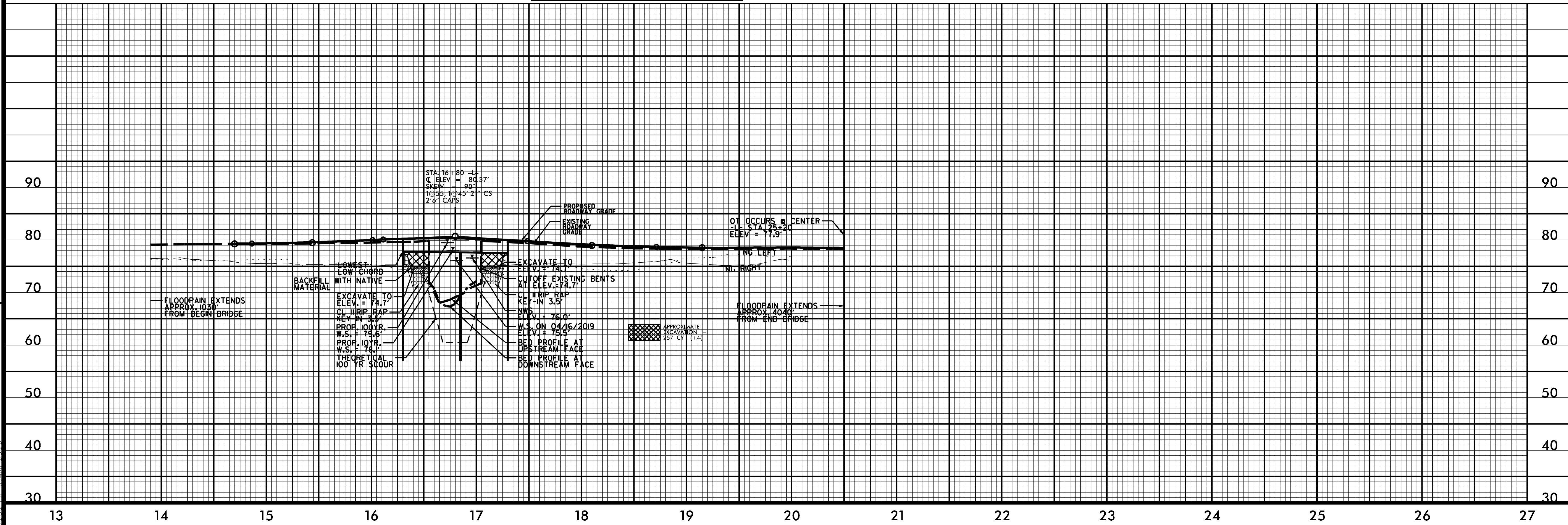
Place Matting for Erosion Control on Slopes Adjacent to Permitted Wetlands as Work Allows.

NOTE: DESIGN EXCEPTION REQUIRED FOR THE HORIZONTAL CURVE RADIUS AND HORIZONTAL STOPPING SIGHT DISTANCE

SHOULDER BERM GUTTER
 FROM STA. 15+85.06 RT. TO STA. 16+17.94 RT.
 FROM STA. 17+42.06 RT. TO STA. 17+68.00 RT.

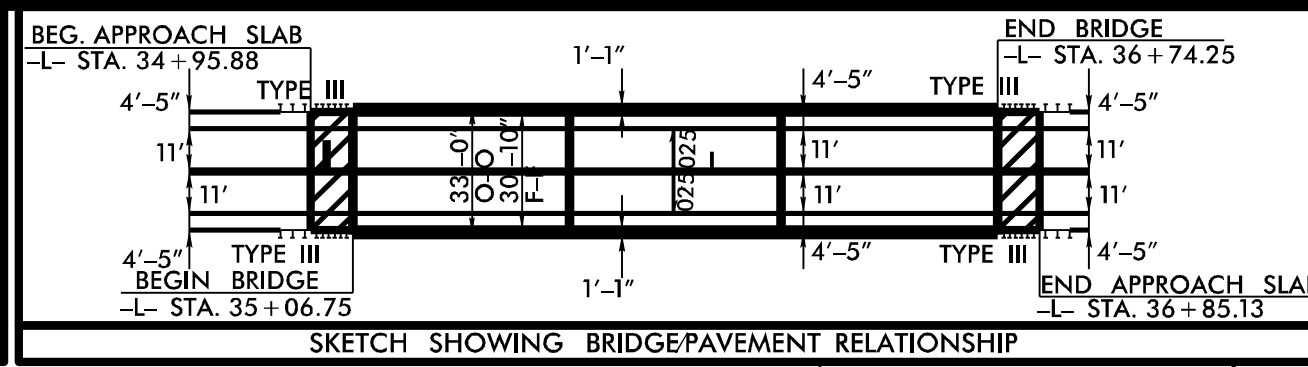
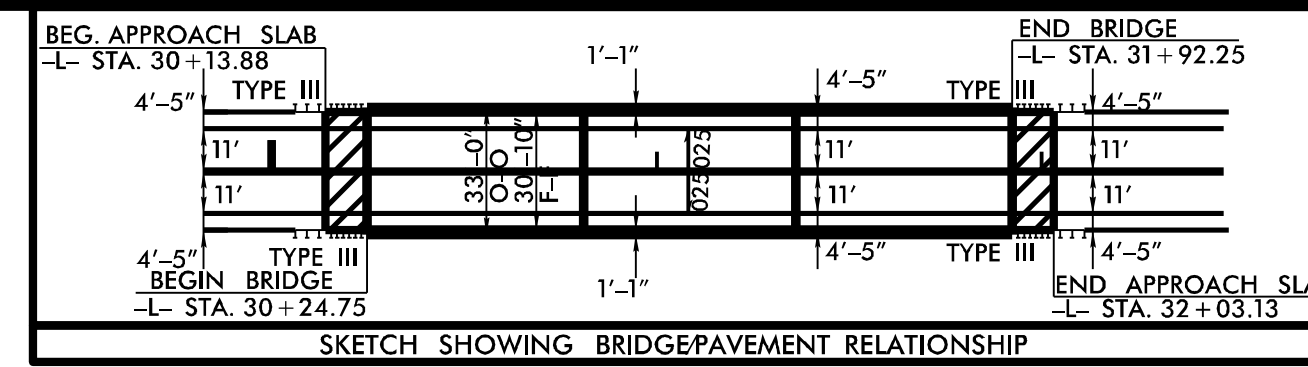
JEFFREY SKINNER ET AL

REVISIONS



SYSTEMS
 8/17/19

8/17/20

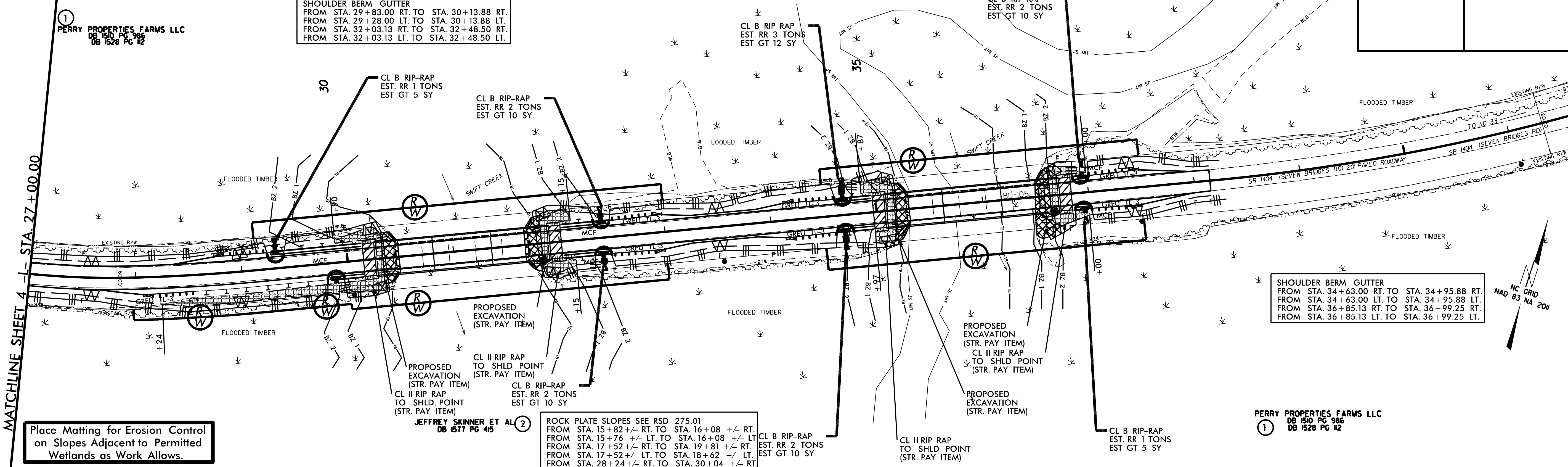


ETHERILL ENGINEERING
 TRANSPORTATION PLANNING/DESIGN - BRIDGE/STRUCTURE DESIGN
 CIVIL/SITE DESIGN - GIS/GPS - CONSTRUCTION OBSERVATION

PERRY PROPERTIES FARMS LLC
 DB 150 PG 986
 DB 1528 PG 12

PROJECT REFERENCE NO. BR-0111	SHEET NO. EC-06/CONST.05
R/W SHEET NO.	
ROADWAY DESIGN ENGINEER	HYDRAULICS ENGINEER

SHOULDER BERM GUTTER
 FROM STA. 29+83.00 RT. TO STA. 30+13.88 RT.
 FROM STA. 29+28.00 LT. TO STA. 30+13.88 LT.
 FROM STA. 32+03.13 RT. TO STA. 32+48.50 RT.
 FROM STA. 32+03.13 LT. TO STA. 32+48.50 LT.



Place Matting for Erosion Control on Slopes Adjacent to Permitted Wetlands as Work Allows.

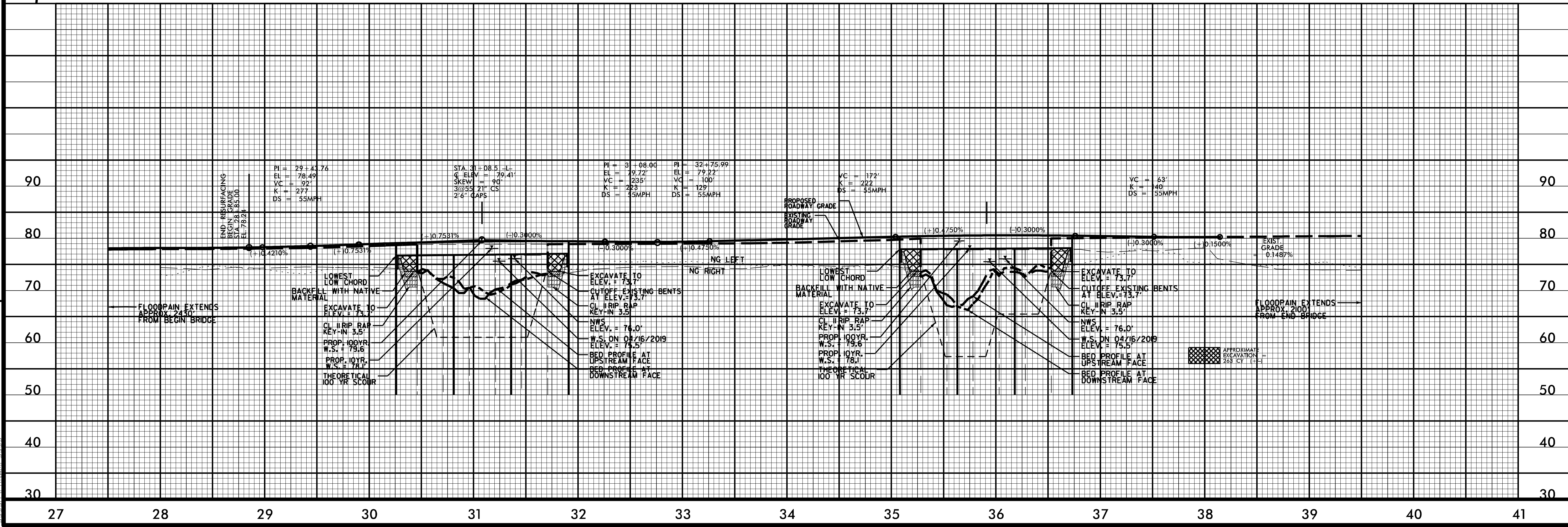
JEFFREY SKINNER ET AL
 DB 1577 PG 45

ROCK PLATE SLOPES SEE RSD 275.01
 FROM STA. 15+82 +/- RT. TO STA. 16+08 +/- RT.
 FROM STA. 15+76 +/- LT. TO STA. 16+08 +/- LT.
 FROM STA. 17+52 +/- RT. TO STA. 19+81 +/- RT.
 FROM STA. 17+52 +/- LT. TO STA. 18+62 +/- LT.
 FROM STA. 28+24 +/- RT. TO STA. 30+04 +/- RT.

SHOULDER BERM GUTTER
 FROM STA. 34+63.00 RT. TO STA. 34+95.88 RT.
 FROM STA. 34+63.00 LT. TO STA. 34+95.88 LT.
 FROM STA. 36+85.13 RT. TO STA. 36+99.25 RT.
 FROM STA. 36+85.13 LT. TO STA. 36+99.25 LT.

PERRY PROPERTIES FARMS LLC
 DB 150 PG 986
 DB 1528 PG 12

REVISIONS



SYSTEMS TIME: 6/28/2020 10:40:00 AM
 USER: JEFFREY SKINNER
 PROJECT: BR-0111