


See Sheet 1A For Index of Sheets
 See Sheet 1B For Conventional Symbols
 See Sheet RW01 TO RW05 For Survey Control Sheets

STATE OF NORTH CAROLINA
 DIVISION OF HIGHWAYS

EDGECOMBE COUNTY

**LOCATION: BRIDGE NO. 320003, 320004, AND 320005 OVER SWIFT CREEK
 ON SR 1404 (SEVEN BRIDGES RD.)**

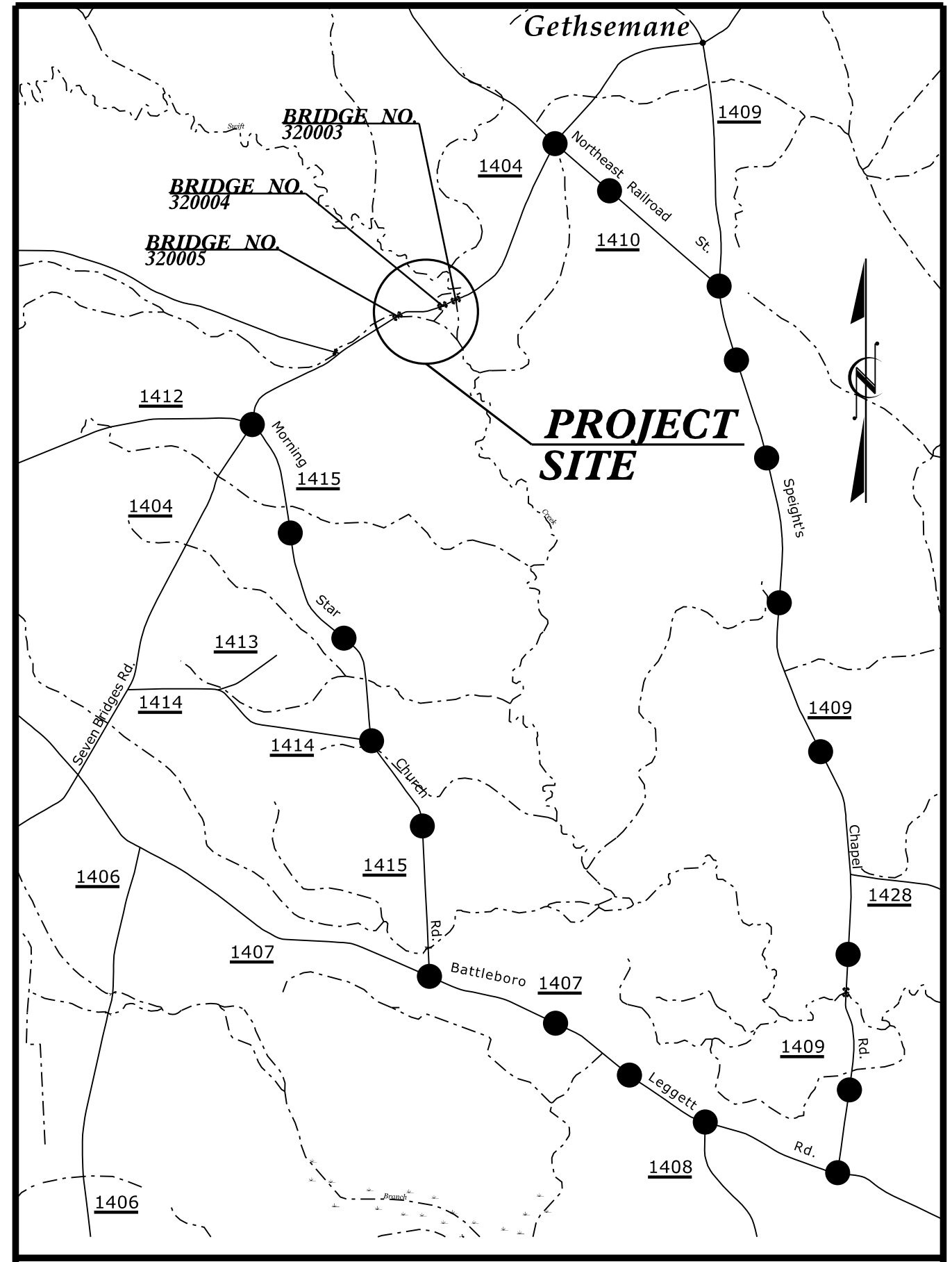
TYPE OF WORK: GRADING, DRAINAGE, PAVING & STRUCTURES

STATE	STATE PROJECT REFERENCE NO.	SHEET NO.	TOTAL SHEETS
N.C.	BR-0111	1	
STATE PROJ. NO.	F.A. PROJ. NO.	DESCRIPTION	
48820.1.1		PE	
48820.2.1		ROW, UTIL.	
48820.3.1	2020001	CONST.	
			
1223 Jones Franklin Rd. Raleigh, N.C. 27606 License No. F-0377 Bus: 919 851 8077 Fax: 919 851 8107			
TRANSPORTATION PLANNING/DESIGN - BRIDGE/STRUCTURE DESIGN CIVIL/SITE DESIGN - GIS/GPS - CONSTRUCTION OBSERVATION			

BRIDGE #320003
BRIDGE #320004
BRIDGE #320005

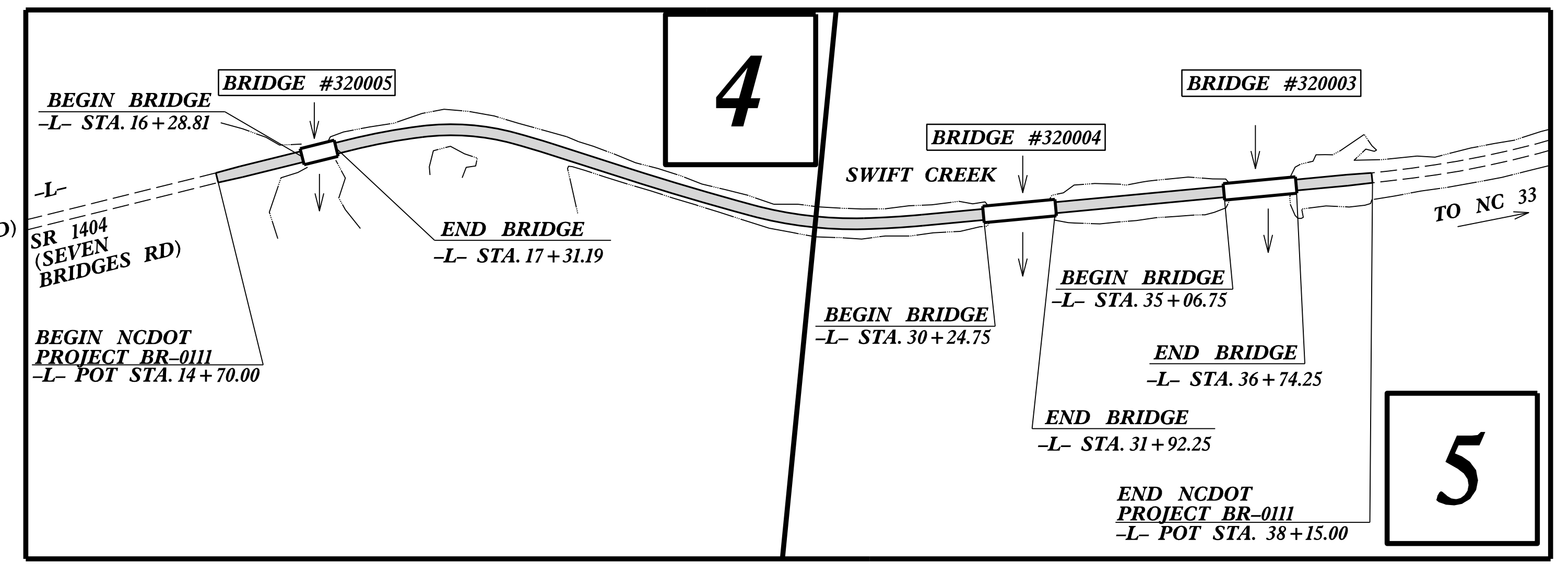
PROJECT: BR-0111

CONTRACT: C204528



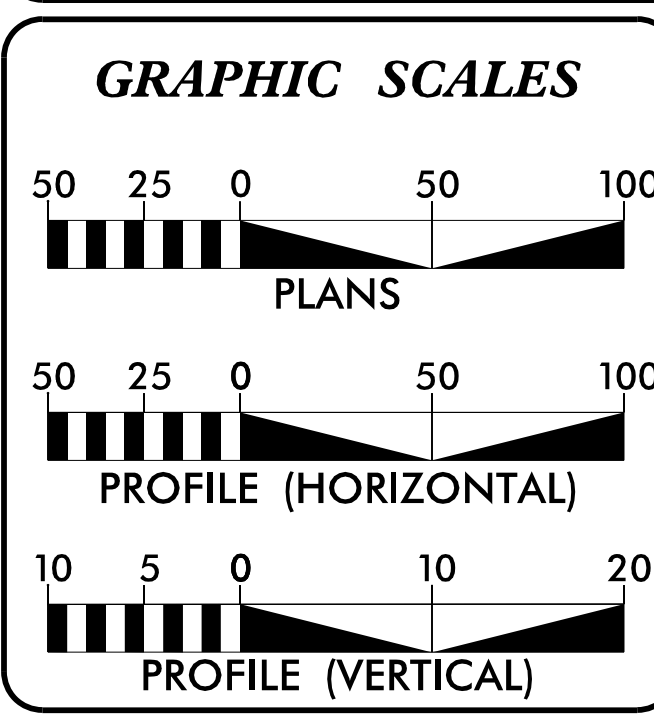
VICINITY MAP

OFF-SITE DETOUR ●●●●●



NOTE:
 DESIGN EXCEPTION REQUIRED FOR THE HORIZONTAL
 CURVE RADIUS AND HORIZONTAL
 STOPPING SIGHT DISTANCE

DOCUMENT NOT CONSIDERED FINAL
 UNLESS ALL SIGNATURES COMPLETED



DESIGN DATA

ADT 2020 = 700
 ADT 2040 = 822

T = 6 % *
 V = 55 MPH

* (TTST = 3% +
 DUAL = 3%)
 FUNC CLASS =
 MINOR COLLECTOR
 SUBREGIONAL TIER

PROJECT LENGTH

LENGTH ROADWAY PROJECT BR-0111 =	0.361 MILES
LENGTH STRUCTURE PROJECT BR-0111 =	0.083 MILES
TOTAL LENGTH PROJECT BR-0111 =	0.444 MILES

NCDOT CONTACT: **DAVID STUTTS, PE**
 PROJECT ENGINEER - PEP/PROGRAM MGT.

Prepared for:
DIVISION OF HIGHWAYS
STRUCTURES MANAGEMENT UNIT
 1000 BIRCH RIDGE DRIVE RALEIGH NC, 27610

2018 STANDARD SPECIFICATIONS

RIGHT OF WAY DATE: EDWARD G. WETHERILL, PE
 PROJECT ENGINEER
 OCTOBER 23, 2019

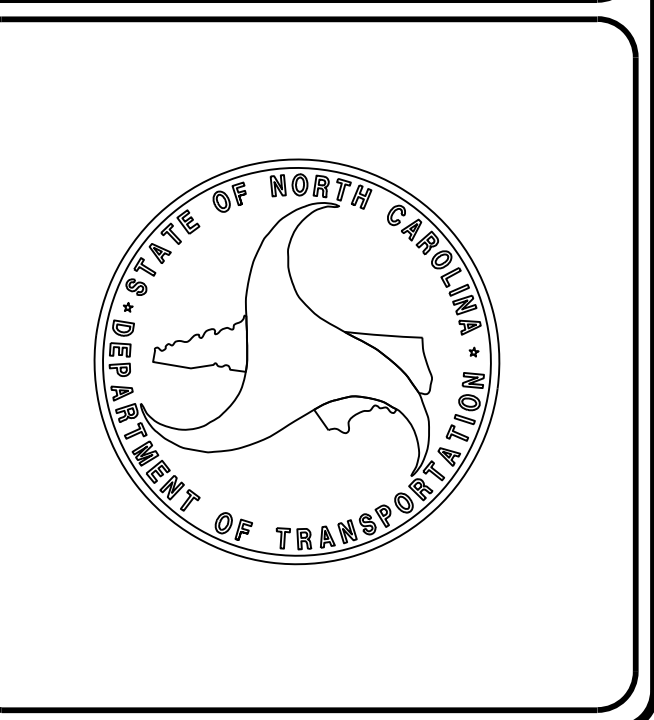
LETTING DATE: GREG S. PURVIS, PE
 PROJECT DESIGN ENGINEER
 NOVEMBER 17, 2020


HYDRAULICS ENGINEER
 9/28/2020 | 09:22:17 EDT

ROADWAY DESIGN ENGINEER
 9/28/2020 | 09:22:17 EDT

SEAL 044561
 SEAL 022999

SIGNATURE: _____
 SIGNATURE: _____



PROJECT REFERENCE NO.	SHEET NO.
BR-0111	1-A
RW SHEET NO.	
ROADWAY DESIGN ENGINEER 2/17/2020	
	
<p>DOCUMENT NOT CONSIDERED FINAL UNLESS ALL SIGNATURES COMPLETED</p>	

GENERAL NOTES

GENERAL NOTES: 2018 SPECIFICATIONS
EFFECTIVE: 01-16-2018
REVISED:

GRADING AND SURFACING OR RESURFACING AND WIDENING:

THE GRADE LINES SHOWN DENOTE THE FINISHED ELEVATION OF THE PROPOSED SURFACING AT GRADE POINTS SHOWN ON THE TYPICAL SECTIONS. WHERE NO GRADE LINES ARE SHOWN, THE PROFILES SHOWN DENOTE THE TOP ELEVATION OF THE EXISTING PAVEMENT ALONG THE CENTER LINE OF SURVEY ON WHICH THE PROPOSED RESURFACING WILL BE PLACED. GRADE LINES MAY BE ADJUSTED BY THE ENGINEER IN ORDER TO SECURE A PROPER TIE-IN.

CLEARING:

CLEARING ON THIS PROJECT SHALL BE PERFORMED TO THE LIMITS ESTABLISHED BY

SUPERELEVATION:

ALL CURVES ON THIS PROJECT SHALL BE SUPERELEVATED IN ACCORDANCE WITH STD. NO. 225.04 USING THE RATE OF SUPERELEVATION AND RUNOFF SHOWN ON THE PLANS. SUPERELEVATION IS TO BE REVOLVED ABOUT THE GRADE POINTS SHOWN ON THE TYPICAL SECTIONS.

SHOULDER CONSTRUCTION:

ASPHALT, EARTH, AND CONCRETE SHOULDER CONSTRUCTION ON THE HIGH SIDE OF SUPERELEVATED CURVES SHALL BE IN ACCORDANCE WITH STD. NO. 560.01

SUBSURFACE DRAINS:

SUBSURFACE DRAINS SHALL BE CONSTRUCTED IN ACCORDANCE WITH STD. NO. 815.02 AT LOCATIONS DIRECTED BY THE ENGINEER.

GUARDRAIL:

THE GUARDRAIL LOCATIONS SHOWN ON THE PLANS MAY BE ADJUSTED DURING CONSTRUCTION AS DIRECTED BY THE ENGINEER. THE CONTRACTOR SHOULD CONSULT WITH THE ENGINEER PRIOR TO ORDERING GUARDRAIL MATERIAL.

TEMPORARY SHORING:

SHORING REQUIRED FOR THE MAINTENANCE OF TRAFFIC WILL BE PAID FOR AS "EXTRA WORK" IN ACCORDANCE WITH SECTION 104-7.

SUBSURFACE PLANS:

NO SUBSURFACE PLANS ARE AVAILABLE ON THIS PROJECT. THE CONTRACTOR SHOULD MAKE HIS OWN INVESTIGATION AS TO THE SUBSURFACE CONDITIONS.

END BENTS:

THE ENGINEER SHALL CHECK THE STRUCTURE END BENT PLANS, DETAILS, AND CROSS-SECTION PRIOR TO SETTING OF THE SLOPE STAKES FOR THE EMBANKMENT OR EXCAVATION APPROACHING A BRIDGE.

UTILITIES:

UTILITY OWNERS ON THIS PROJECT ARE
COMMUNICATION - SUDDENLINK
POWER - EDGEcombe-MARTIN CO. EMC
ANY RELOCATION OF EXISTING UTILITIES WILL BE ACCOMPLISHED BY OTHERS.

RIGHT-OF-WAY MARKERS:

ALL RIGHT-OF-WAY MARKERS ON THIS PROJECT SHALL BE PLACED BY OTHERS.

2018 ROADWAY ENGLISH STANDARD DRAWINGS

EFF. 01-16-2018
REV.

2018 ROADWAY ENGLISH STANDARD DRAWINGS

The following Roadway Standards as appear in "Roadway Standard Drawings" Highway Design Branch - N. C. Department of Transportation - Raleigh, N. C., Dated January, 2018 are applicable to this project and by reference hereby are considered a part of these plans:

STD.NO.	TITLE
DIVISION 2 - EARTHWORK	
200.03	Method of Clearing - Method III
225.02	Guide for Grading Subgrade - Secondary and Local
225.04	Method of Obtaining Superelevation - Two Lane Pavement
275.01	Rock Plating
DIVISION 4 - MAJOR STRUCTURES	
422.02	Bridge Approach Fills - Type II Modified Approach Fill
DIVISION 5 - SUBGRADE, BASES AND SHOULDERS	
560.01	Method of Shoulder Construction - High Side of Superelevated Curve - Method I
DIVISION 8 - INCIDENTALS	
815.02	Subsurface Drain
846.01	Concrete Curb, Gutter and Curb & Gutter
862.01	Guardrail Placement
862.02	Guardrail Installation
862.03	Structure Anchor Units
876.02	Guide for Rip Rap at Pipe Outlets

INDEX OF SHEETS

SHEET NUMBER	SHEET
1	TITLE SHEET
1A	INDEX OF SHEETS, GENERAL NOTES, AND LIST OF STANDARD DRAWINGS
1B	CONVENTIONAL SYMBOLS
2A-1 THRU 2A-2	TYPICAL SECTIONS, PAVEMENT SCHEDULE, & MISCELLANEOUS DETAILS
2C-1	DETAIL OF MODIFIED CONCRETE FLUME
2C-2	DETAIL FOR TYPE III STRUCTURE ANCHOR UNIT
2C-3	DETAIL FOR GUARDRAIL INSTALLATION
3B-1	SUMMARY OF DRAINAGE QUANTITIES, GUARDRAIL SUMMARY, EARTHWORK SUMMARY, PAVEMENT REMOVAL SUMMARY, AND SHOULDER BERM GUTTER SUMMARY
3G-1	SUMMARY OF SUBSURFACE DRAINAGE AND ROCK PLATING
3P-1	PARCEL INDEX SHEET
4 THRU 5	PLAN AND PROFILE SHEETS
RW01 THRU RW05	RIGHT OF WAY SHEETS, SURVEY CONTROL SHEETS, PROPOSED ALIGNMENT CONTROL SHEET AND PROPOSED EASEMENT CONTROL SHEET
TMP-1 THRU TMP-4	TRANSPORTATION MANAGEMENT PLAN
PMP-1 THRU PMP-2	PAVEMENT MARKING PLAN
EC-1 THRU EC-6	EROSION CONTROL PLANS
RF-1	REFORESTATION PLAN
UO-1 THRU UO-3	UTILITIES BY OTHERS PLANS
X-1A	CROSS SECTION SUMMARY SHEET
X-1 THRU X-11	CROSS SECTIONS
S01-1 THRU S01-18	STRUCTURE PLANS (STR. NO. 320005)
S02-1 THRU S02-17	STRUCTURE PLANS (STR. NO. 320004)
S03-1 THRU S03-17	STRUCTURE PLANS (STR. NO. 320003)

STATE OF NORTH CAROLINA, DIVISION OF HIGHWAYS CONVENTIONAL PLAN SHEET SYMBOLS

BOUNDARIES AND PROPERTY:

State Line	-----
County Line	-----
Township Line	-----
City Line	-----
Reservation Line	-----
Property Line	-----
Existing Iron Pin	○ EP
Computed Property Corner	-----
Property Monument	□ ECM
Parcel/Sequence Number	①23
Existing Fence Line	-x-x-x-
Proposed Woven Wire Fence	○
Proposed Chain Link Fence	□
Proposed Barbed Wire Fence	◇
Existing Wetland Boundary	---WLB---
Proposed Wetland Boundary	WLB
Existing Endangered Animal Boundary	---EAB---
Existing Endangered Plant Boundary	---EPB---
Existing Historic Property Boundary	---HPB---
Known Contamination Area: Soil	☠ S ☠
Potential Contamination Area: Soil	☠ S ☠
Known Contamination Area: Water	☠ W ☠
Potential Contamination Area: Water	☠ W ☠
Contaminated Site: Known or Potential	☠ ?

BUILDINGS AND OTHER CULTURE:

Gas Pump Vent or U/G Tank Cap	○
Sign	○ S
Well	○ W
Small Mine	✕
Foundation	□
Area Outline	□
Cemetery	□
Building	□
School	□
Church	□
Dam	▬

HYDROLOGY:

Stream or Body of Water	-----
Hydro, Pool or Reservoir	□
Jurisdictional Stream	---JS---
Buffer Zone 1	---BZ 1---
Buffer Zone 2	---BZ 2---
Flow Arrow	←
Disappearing Stream	→
Spring	○
Wetland	▽
Proposed Lateral, Tail, Head Ditch	▬
False Sump	▽

RAILROADS:

Standard Gauge	-----
RR Signal Milepost	○ MILEPOST 35
Switch	□ SWITCH
RR Abandoned	-----
RR Dismantled	-----

RIGHT OF WAY & PROJECT CONTROL:

Secondary Horiz and Vert Control Point	◆
Primary Horiz Control Point	○
Primary Horiz and Vert Control Point	◆
Exist Permanent Easement Pin and Cap	◇
New Permanent Easement Pin and Cap	◆
Vertical Benchmark	⊠
Existing Right of Way Marker	△
Existing Right of Way Line	-----
New Right of Way Line	○ R W
New Right of Way Line with Pin and Cap	○ R W ◆
New Right of Way Line with Concrete or Granite R/W Marker	○ R W ◆
New Control of Access Line with Concrete C/A Marker	○ C/A
Existing Control of Access	○ C/A
New Control of Access	○ C/A
Existing Easement Line	---E---
New Temporary Construction Easement	---E---
New Temporary Drainage Easement	---TDE---
New Permanent Drainage Easement	---PDE---
New Permanent Drainage / Utility Easement	---DUE---
New Permanent Utility Easement	---PUE---
New Temporary Utility Easement	---TUE---
New Aerial Utility Easement	---AUE---

ROADS AND RELATED FEATURES:

Existing Edge of Pavement	-----
Existing Curb	-----
Proposed Slope Stakes Cut	---C---
Proposed Slope Stakes Fill	---F---
Proposed Curb Ramp	---CR---
Existing Metal Guardrail	---T---
Proposed Guardrail	---T---
Existing Cable Guiderail	---T---
Proposed Cable Guiderail	---T---
Equality Symbol	⊕
Pavement Removal	▨

VEGETATION:

Single Tree	☼
Single Shrub	☼

Note: Not to Scale *S.U.E. = Subsurface Utility Engineering

Hedge	-----
Woods Line	-----
Orchard	☼ ☼ ☼ ☼
Vineyard	□ Vineyard

EXISTING STRUCTURES:

MAJOR:	
Bridge, Tunnel or Box Culvert	CONC
Bridge Wing Wall, Head Wall and End Wall	CONC WW
MINOR:	
Head and End Wall	CONC HW
Pipe Culvert	-----
Footbridge	-----
Drainage Box: Catch Basin, DI or JB	□ CB
Paved Ditch Gutter	-----
Storm Sewer Manhole	⊙
Storm Sewer	---S---

UTILITIES:

POWER:	
Existing Power Pole	●
Proposed Power Pole	○
Existing Joint Use Pole	●
Proposed Joint Use Pole	○
Power Manhole	⊙
Power Line Tower	⊠
Power Transformer	⊠
U/G Power Cable Hand Hole	○
H-Frame Pole	●
U/G Power Line LOS B (S.U.E.*)	---P---
U/G Power Line LOS C (S.U.E.*)	---P---
U/G Power Line LOS D (S.U.E.*)	---P---

TELEPHONE:

Existing Telephone Pole	●
Proposed Telephone Pole	○
Telephone Manhole	⊙
Telephone Pedestal	⊠
Telephone Cell Tower	⊠
U/G Telephone Cable Hand Hole	○
U/G Telephone Cable LOS B (S.U.E.*)	---T---
U/G Telephone Cable LOS C (S.U.E.*)	---T---
U/G Telephone Cable LOS D (S.U.E.*)	---T---
U/G Telephone Conduit LOS B (S.U.E.*)	---TC---
U/G Telephone Conduit LOS C (S.U.E.*)	---TC---
U/G Telephone Conduit LOS D (S.U.E.*)	---TC---
U/G Fiber Optics Cable LOS B (S.U.E.*)	---T FO---
U/G Fiber Optics Cable LOS C (S.U.E.*)	---T FO---
U/G Fiber Optics Cable LOS D (S.U.E.*)	---T FO---

WATER:

Water Manhole	⊙
Water Meter	○
Water Valve	⊗
Water Hydrant	⊕
U/G Water Line LOS B (S.U.E.*)	---W---
U/G Water Line LOS C (S.U.E.*)	---W---
U/G Water Line LOS D (S.U.E.*)	---W---
Above Ground Water Line	---A/G Water---

TV:

TV Pedestal	□
TV Tower	⊗
U/G TV Cable Hand Hole	○
U/G TV Cable LOS B (S.U.E.*)	---TV---
U/G TV Cable LOS C (S.U.E.*)	---TV---
U/G TV Cable LOS D (S.U.E.*)	---TV---
U/G Fiber Optic Cable LOS B (S.U.E.*)	---TV FO---
U/G Fiber Optic Cable LOS C (S.U.E.*)	---TV FO---
U/G Fiber Optic Cable LOS D (S.U.E.*)	---TV FO---

GAS:

Gas Valve	◇
Gas Meter	⊕
U/G Gas Line LOS B (S.U.E.*)	---G---
U/G Gas Line LOS C (S.U.E.*)	---G---
U/G Gas Line LOS D (S.U.E.*)	---G---
Above Ground Gas Line	---A/G Gas---

SANITARY SEWER:

Sanitary Sewer Manhole	⊙
Sanitary Sewer Cleanout	⊕
U/G Sanitary Sewer Line	---SS---
Above Ground Sanitary Sewer	---A/G Sanitary Sewer---
SS Forced Main Line LOS B (S.U.E.*)	---FSS---
SS Forced Main Line LOS C (S.U.E.*)	---FSS---
SS Forced Main Line LOS D (S.U.E.*)	---FSS---

MISCELLANEOUS:

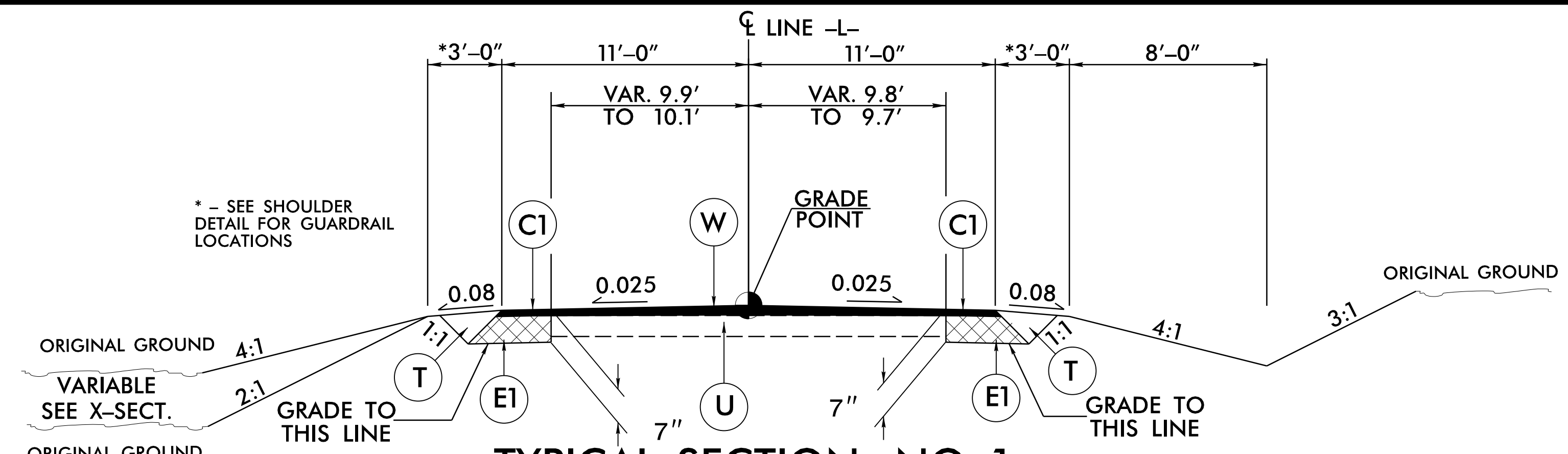
Utility Pole	●
Utility Pole with Base	□
Utility Located Object	○
Utility Traffic Signal Box	⊠
Utility Unknown U/G Line LOS B (S.U.E.*)	---ZUTL---
U/G Tank; Water, Gas, Oil	□
Underground Storage Tank, Approx. Loc.	⊠
A/G Tank; Water, Gas, Oil	□
Geoenvironmental Boring	⊕
U/G Test Hole LOS A (S.U.E.*)	⊕
Abandoned According to Utility Records	AATUR
End of Information	E.O.I.

12/2/2016

6/2/20

FINAL PAVEMENT SCHEDULE	
C1	PROP. APPROX. 3" ASPHALT CONCRETE SURFACE COURSE, TYPE S9.5B, AT AN AVERAGE RATE OF 165 LBS. PER SQ. YD. IN EACH OF TWO LAYERS.
C2	PROP. VAR. DEPTH ASPHALT CONCRETE SURFACE COURSE, TYPE S9.5B, AT AN AVERAGE RATE OF 110 LBS. PER SQ. YD. PER 1" DEPTH. TO BE PLACED IN LAYERS NOT TO EXCEED 1 1/2" IN DEPTH.
E1	PROP. APPROX. 4" ASPHALT CONCRETE BASE COURSE, TYPE B25.0C, AT AN AVERAGE RATE OF 456 LBS. PER SQ. YD.
E2	PROP. VAR. DEPTH ASPHALT CONCRETE BASE COURSE, TYPE B25.0C, AT AN AVERAGE RATE OF 114 LBS. PER SQ. YD. PER 1" DEPTH. TO BE PLACED IN LAYERS NOT LESS THAN 3" IN DEPTH OR GREATER THAN 5 1/2" IN DEPTH.
R1	SHOULDER BERM GUTTER
T	EARTH MATERIAL.
U	EXISTING PAVEMENT.
V	MILLING BITUMINOUS PAVEMENT. (SEE MILLING DETAIL)
W	VARIABLE DEPTH ASPHALT PAVEMENT (SEE WEDGING DETAIL)

NOTE: PAVEMENT EDGE SLOPES ARE 1:1 UNLESS SHOWN OTHERWISE.



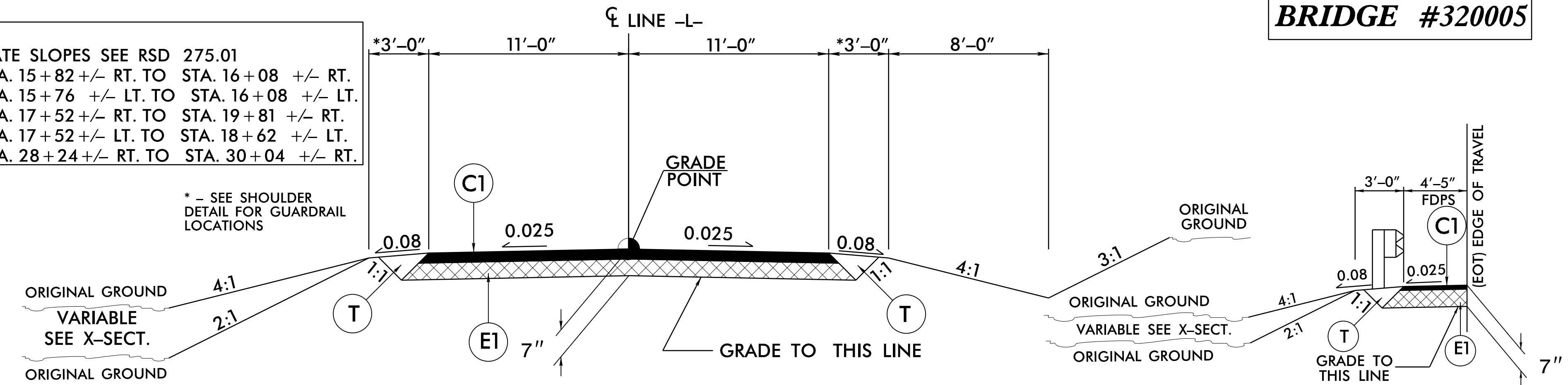
TYPICAL SECTION NO. 1

USE TYPICAL SECTION NO. 1 AS FOLLOWS:
 -L- STA. 14+70.00 TO -L- STA. 15+78.81
 -L- STA. 17+81.19 TO -L- STA. 19+15.00
 -L- STA. 28+85.00 TO -L- STA. 29+74.75
 -L- STA. 32+42.25 TO -L- STA. 34+56.75**
 -L- STA. 37+24.25 TO -L- STA. 38+15.00

** - 2' PAVED SHOULDER/4' TOTAL SHOULDER FROM -L- STA. 33+24.71 TO -L- STA. 33+86.79 SEE CROSS SECTIONS

NOTE:
 ROCK PLATE SLOPES SEE RSD 275.01
 FROM STA. 15+82 +/- RT. TO STA. 16+08 +/- RT.
 FROM STA. 15+76 +/- LT. TO STA. 16+08 +/- LT.
 FROM STA. 17+52 +/- RT. TO STA. 19+81 +/- RT.
 FROM STA. 17+52 +/- LT. TO STA. 18+62 +/- LT.
 FROM STA. 28+24 +/- RT. TO STA. 30+04 +/- RT.

* - SEE SHOULDER DETAIL FOR GUARDRAIL LOCATIONS

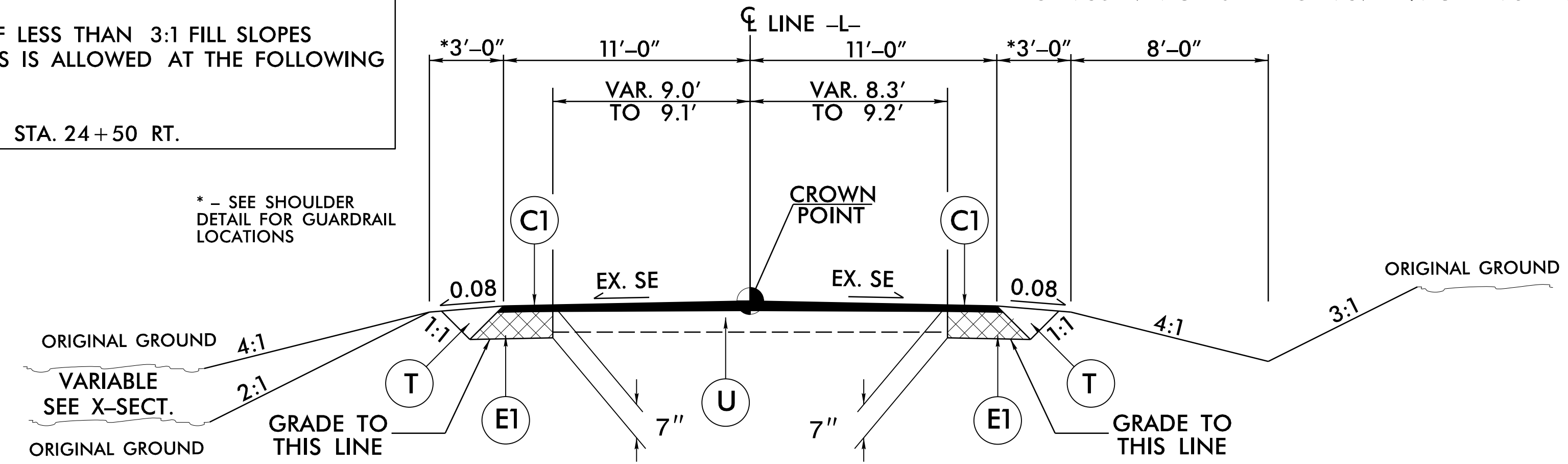


TYPICAL SECTION NO. 2

USE TYPICAL SECTION NO. 2 AS FOLLOWS:
 -L- STA. 15+78.81 TO -L- STA. 16+28.81 (BEGIN BRIDGE)
 -L- STA. 17+31.19 (END BRIDGE) TO -L- STA. 17+81.19
 -L- STA. 29+74.75 TO -L- STA. 30+24.75 (BEGIN BRIDGE)
 -L- STA. 31+92.25 (END BRIDGE) TO -L- STA. 32+42.25
 -L- STA. 34+56.75 TO -L- STA. 35+06.75 (BEGIN BRIDGE)
 -L- STA. 36+74.25 (END BRIDGE) TO -L- STA. 37+24.25

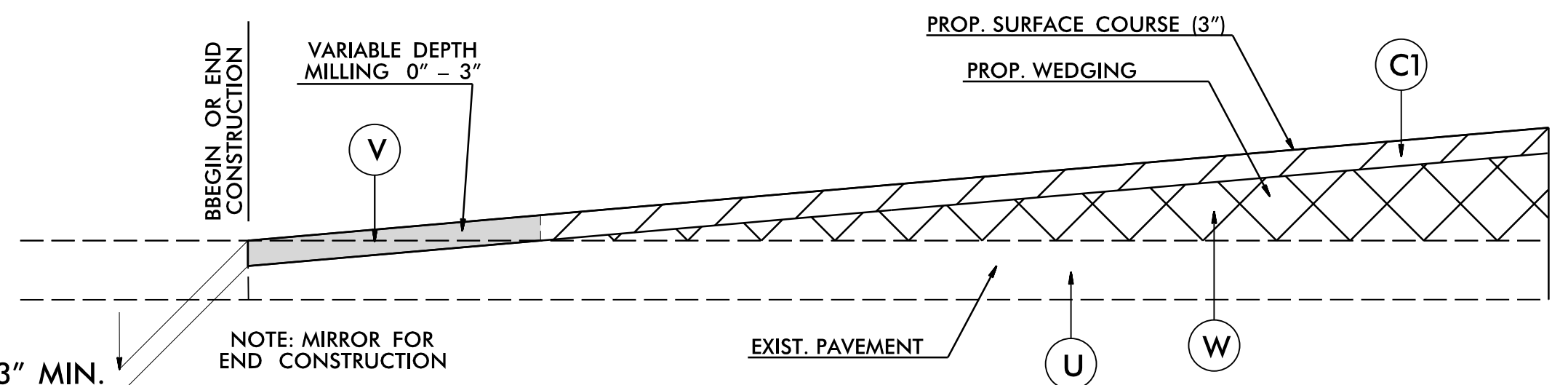
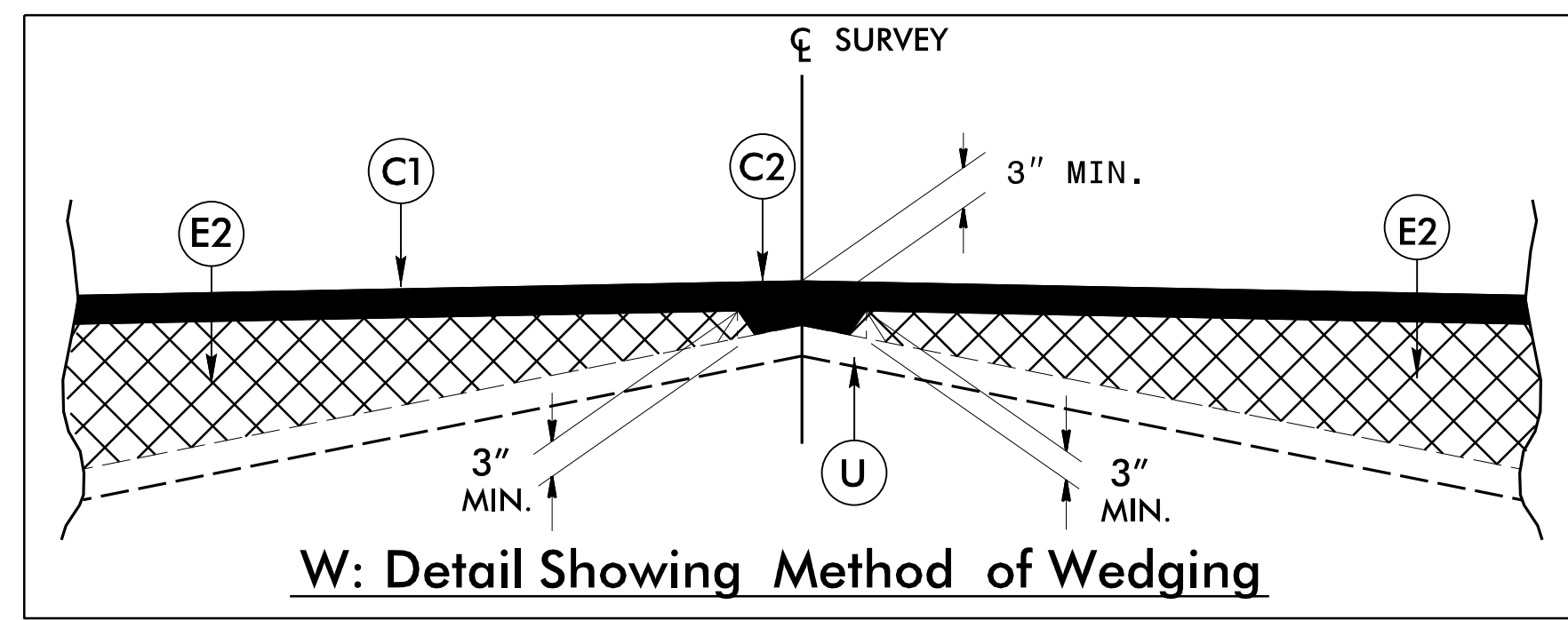
NOTE:
 UTILIZATION OF LESS THAN 3:1 FILL SLOPES FOR SLIVER FILLS IS ALLOWED AT THE FOLLOWING LOCATIONS:
 STA. 21+00 RT.
 STA. 22+50 TO STA. 24+50 RT.

* - SEE SHOULDER DETAIL FOR GUARDRAIL LOCATIONS



TYPICAL SECTION NO. 3

USE TYPICAL SECTION NO. 3 AS FOLLOWS:
 -L- STA. 19+15.00 TO -L- STA. 28+85.00

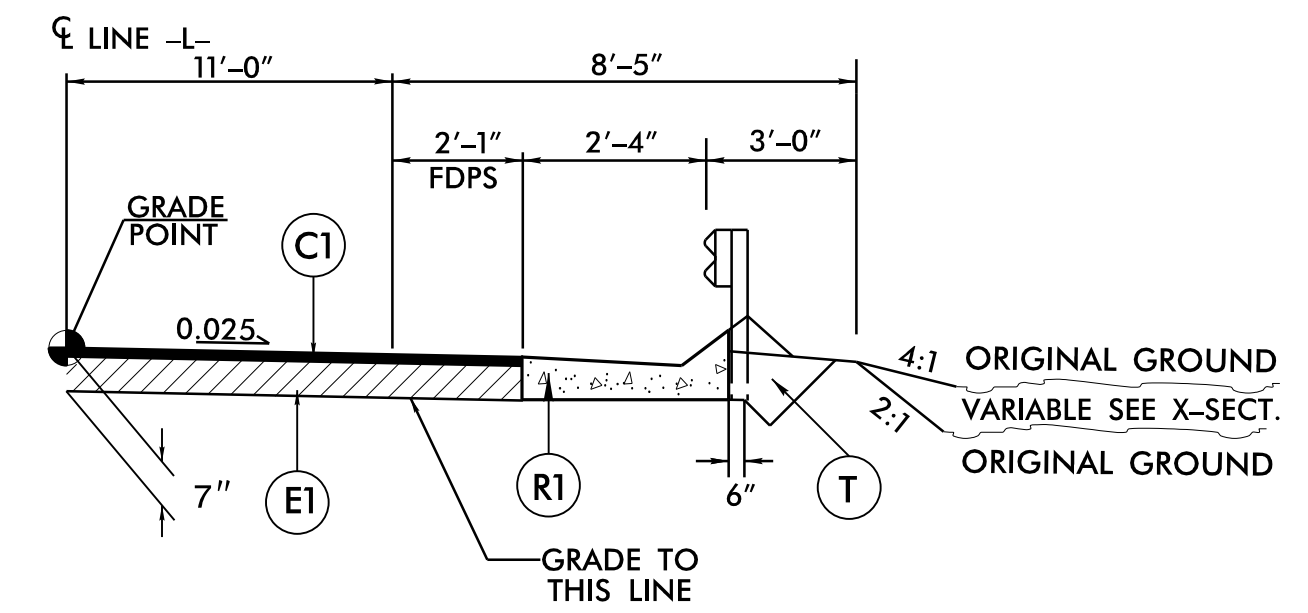


INCIDENTAL MILLING DETAIL

-L- STA. 14+70.00 TO -L- STA. 15+45.00
 -L- STA. 37+40.00 TO -L- STA. 38+15.00

SHOULDER BERM GUTTER DETAIL

USE SHOULDER BERM GUTTER DETAIL IN CONJUNCTION WITH TYPICAL SECTIONS NO. 1 & 2:
 -L- STA. 15+85.06 RT. TO STA. 16+17.94 RT.
 -L- STA. 17+42.06 RT. TO STA. 17+68.00 RT.
 -L- STA. 29+83.00 RT. TO STA. 30+13.88 RT.
 -L- STA. 29+89.00 LT. TO STA. 30+13.88 LT.
 -L- STA. 32+03.13 RT. TO STA. 32+48.50 RT.
 -L- STA. 32+03.13 LT. TO STA. 32+48.50 LT.
 -L- STA. 34+63.00 RT. TO STA. 34+95.88 RT.
 -L- STA. 34+63.00 LT. TO STA. 34+95.88 LT.
 -L- STA. 36+85.13 RT. TO STA. 36+99.25 RT.
 -L- STA. 36+85.13 LT. TO STA. 36+99.25 LT.



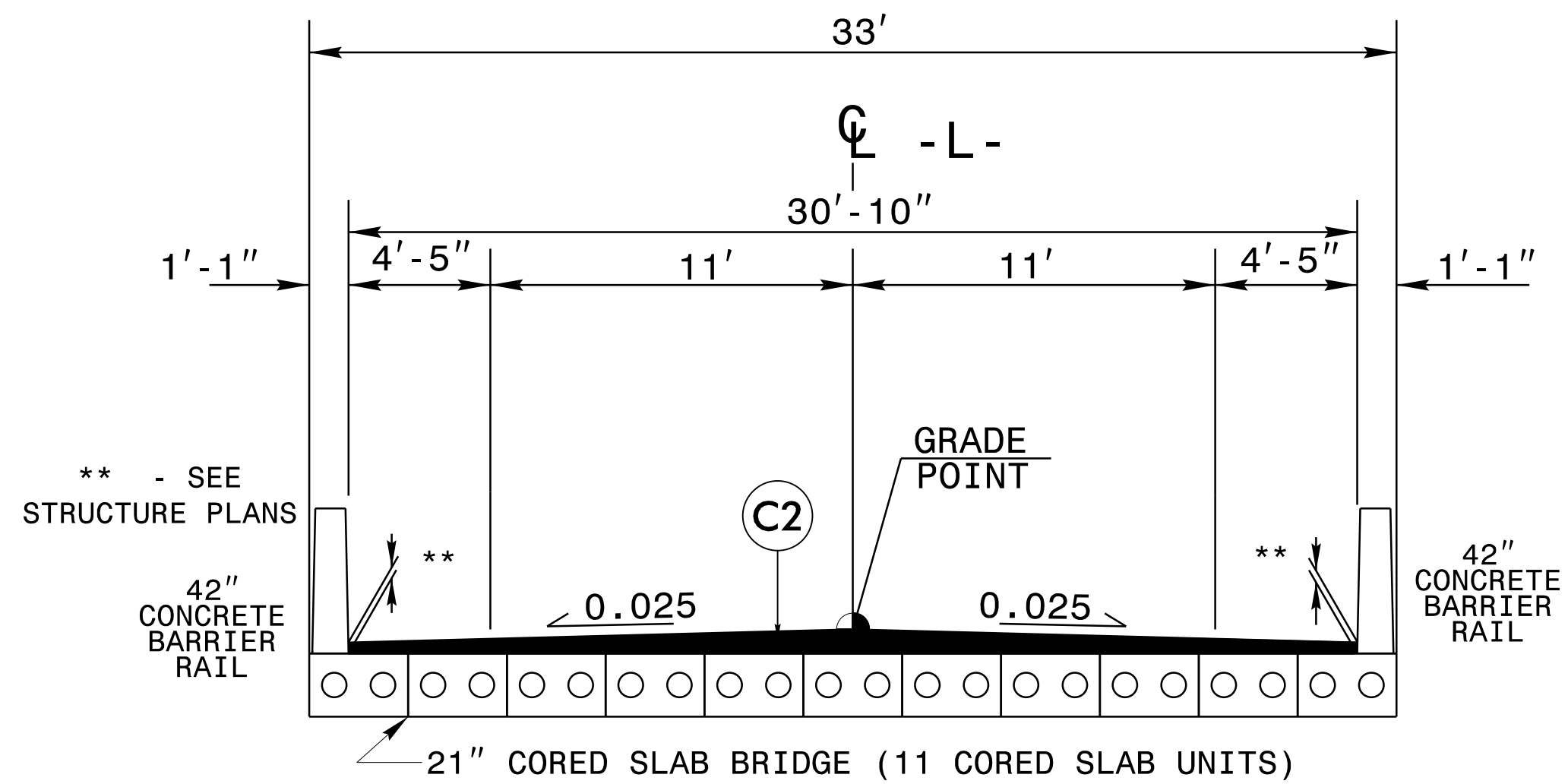
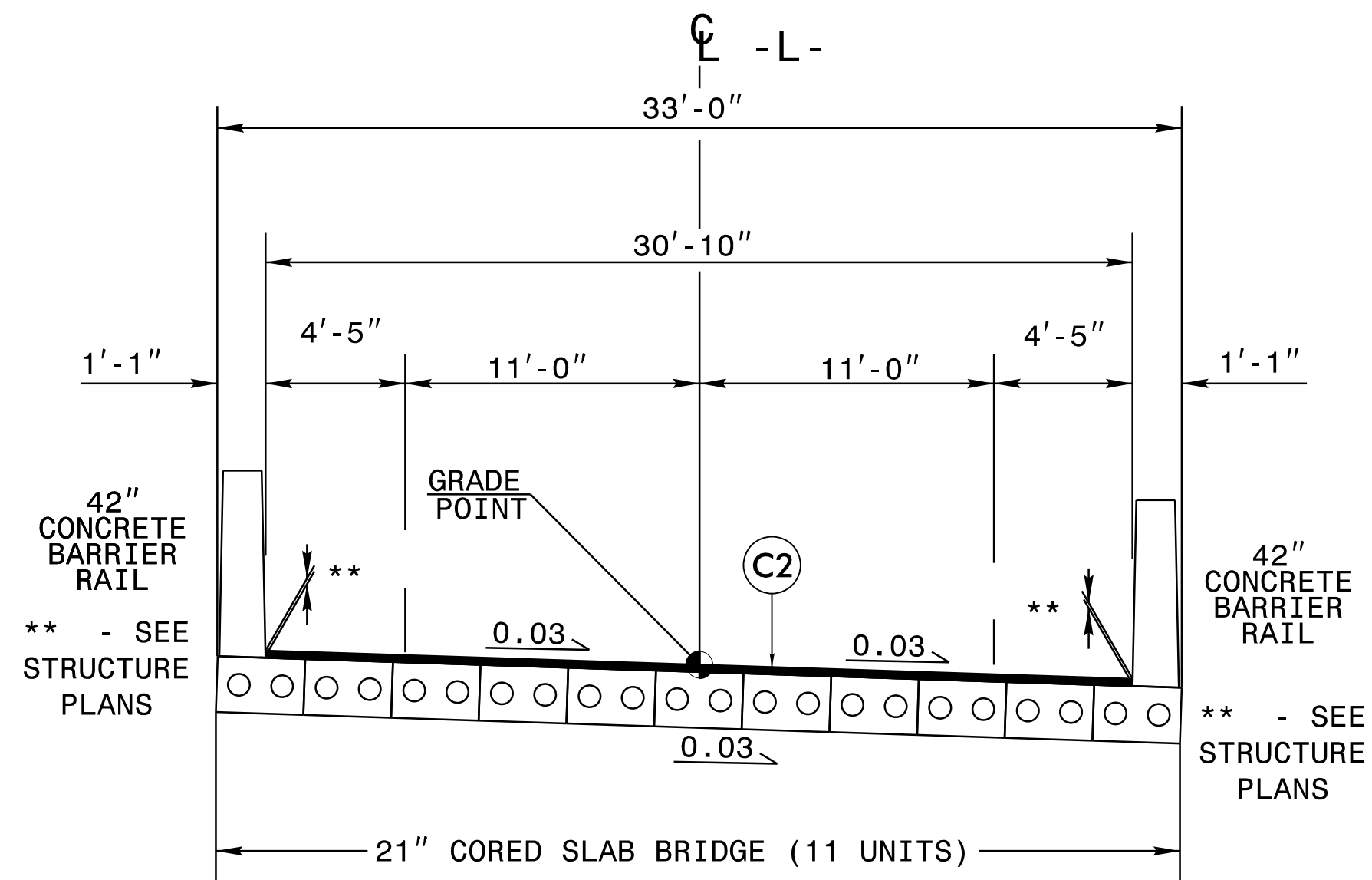
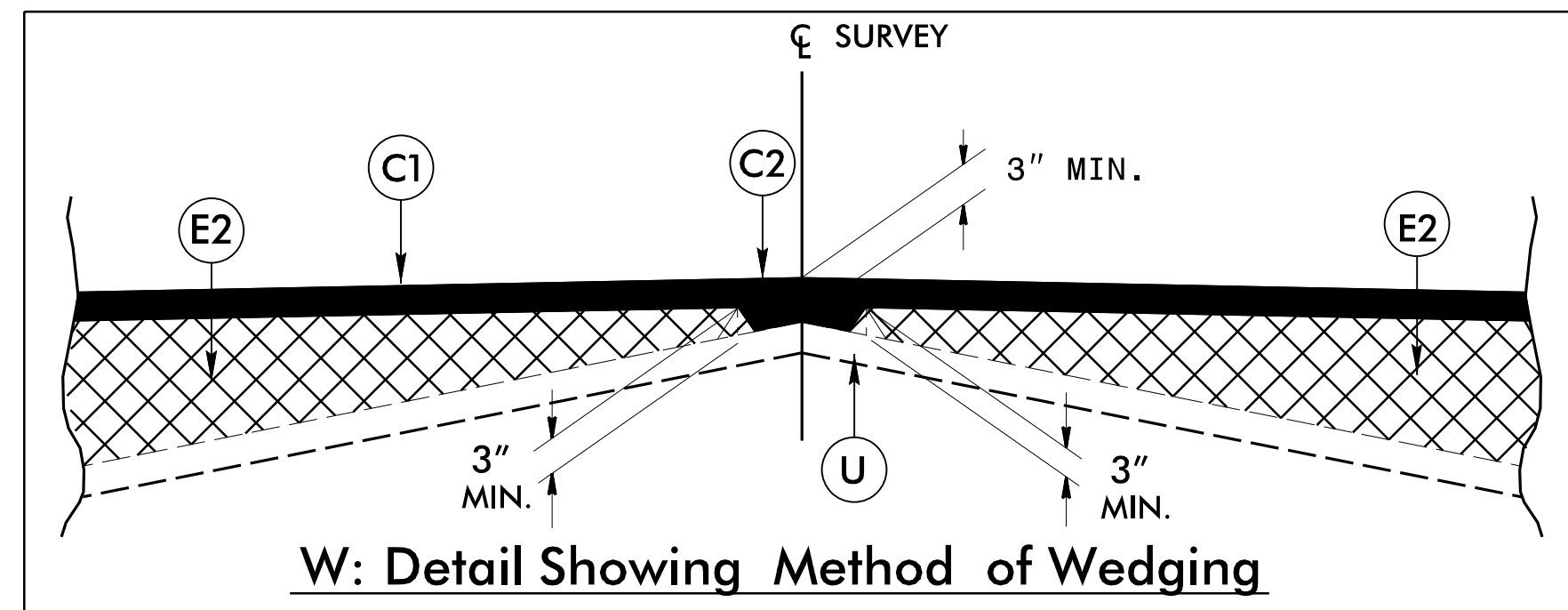
PROJECT REFERENCE NO. <i>BR-0111</i>	SHEET NO. <i>2A-1</i>
ROADWAY DESIGN ENGINEER 1/7/2020 <i>SEAL 022999</i>	PAVEMENT DESIGN ENGINEER 1/7/2020 <i>SEAL 22896</i>
<i>Eric S. Purvis</i>	<i>Clark S. Morrison</i>
 1223 Jones Franklin Rd. Raleigh, N.C. 27606 License No. 5-0377 Bus: 919 851 8077 Fax: 919 851 8107	
TRANSPORTATION PLANNING/DESIGN - BRIDGE/STRUCTURE DESIGN CIVIL/SITE DESIGN - GIS/GPS - CONSTRUCTION OBSERVATION	
DOCUMENT NOT CONSIDERED FINAL UNLESS ALL SIGNATURES COMPLETED	

BRIDGE #320003
BRIDGE #320004
BRIDGE #320005

I:\7\2020\BR-0111\Relay-typr.dgn

FINAL PAVEMENT SCHEDULE	
C1	PROP. APPROX. 3" ASPHALT CONCRETE SURFACE COURSE, TYPE S9.5B, AT AN AVERAGE RATE OF 165 LBS. PER SQ. YD. IN EACH OF TWO LAYERS.
C2	PROP. VAR. DEPTH ASPHALT CONCRETE SURFACE COURSE, TYPE S9.5B, AT AN AVERAGE RATE OF 110 LBS. PER SQ. YD. PER 1" DEPTH. TO BE PLACED IN LAYERS NOT TO EXCEED 1 1/2" IN DEPTH.
E1	PROP. APPROX. 4" ASPHALT CONCRETE BASE COURSE, TYPE B25.0C, AT AN AVERAGE RATE OF 456 LBS. PER SQ. YD.
E2	PROP. VAR. DEPTH ASPHALT CONCRETE BASE COURSE, TYPE B25.0C, AT AN AVERAGE RATE OF 114 LBS. PER SQ. YD. PER 1" DEPTH. TO BE PLACED IN LAYERS NOT LESS THAN 3" IN DEPTH OR GREATER THAN 5 1/2" IN DEPTH.
R1	SHOULDER BERM GUTTER
T	EARTH MATERIAL.
U	EXISTING PAVEMENT.
V	MILLING BITUMINOUS PAVEMENT. (SEE MILLING DETAIL)
W	VARIABLE DEPTH ASPHALT PAVEMENT (SEE WEDGING DETAIL)

NOTE: PAVEMENT EDGE SLOPES ARE 1:1 UNLESS SHOWN OTHERWISE.



PROJECT REFERENCE NO. <i>BR-0111</i>	SHEET NO. <i>2A-2</i>
ROADWAY DESIGN ENGINEER 1/7/2020 	PAVEMENT DESIGN ENGINEER 1/7/2020
TRANSPORTATION PLANNING/DESIGN - BRIDGE/STRUCTURE DESIGN CIVIL/SITE DESIGN - GIS/GPS - CONSTRUCTION OBSERVATION	
DOCUMENT NOT CONSIDERED FINAL UNLESS ALL SIGNATURES COMPLETED	

BRIDGE #320003
BRIDGE #320004
BRIDGE #320005

STATE OF NORTH CAROLINA DEPT. OF TRANSPORTATION DIVISION OF HIGHWAYS RALEIGH, N.C.

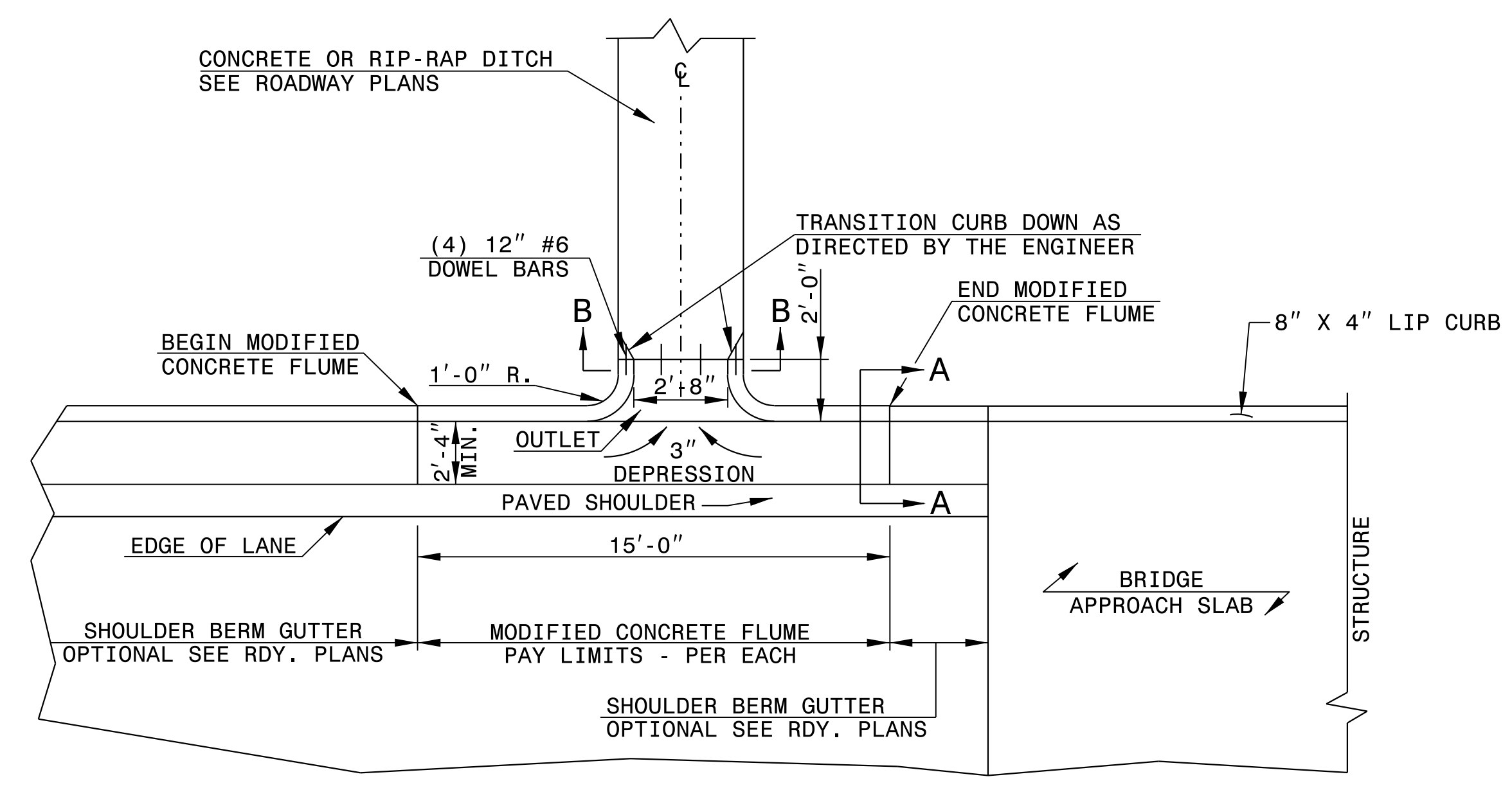
ENGLISH DETAIL DRAWING FOR MODIFIED CONCRETE FLUME WITH CONCRETE OR RIP-RAP DITCH

SHEET 1 OF 1 MODFLMDTCH

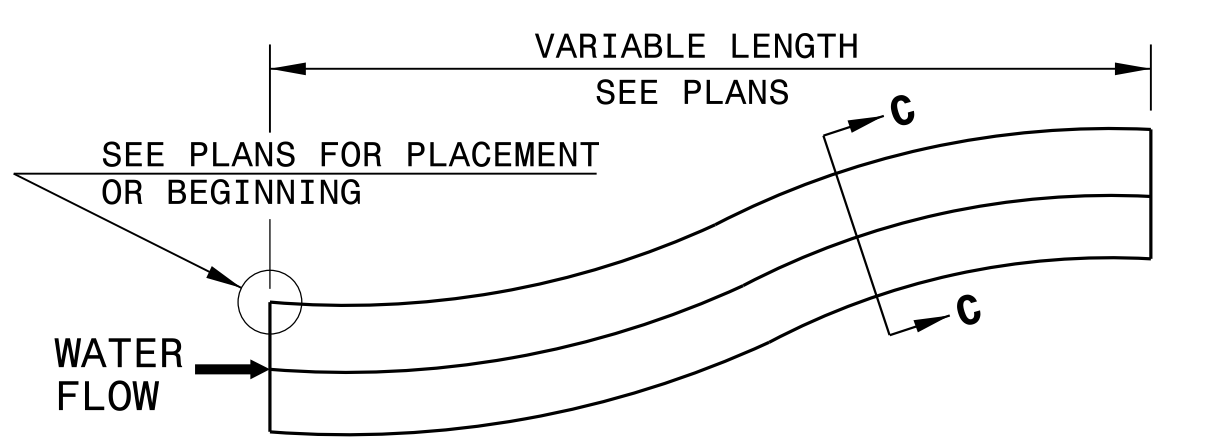
STATE OF NORTH CAROLINA DEPT. OF TRANSPORTATION DIVISION OF HIGHWAYS RALEIGH, N.C.

ENGLISH DETAIL DRAWING FOR MODIFIED CONCRETE FLUME WITH CONCRETE OR RIP-RAP DITCH

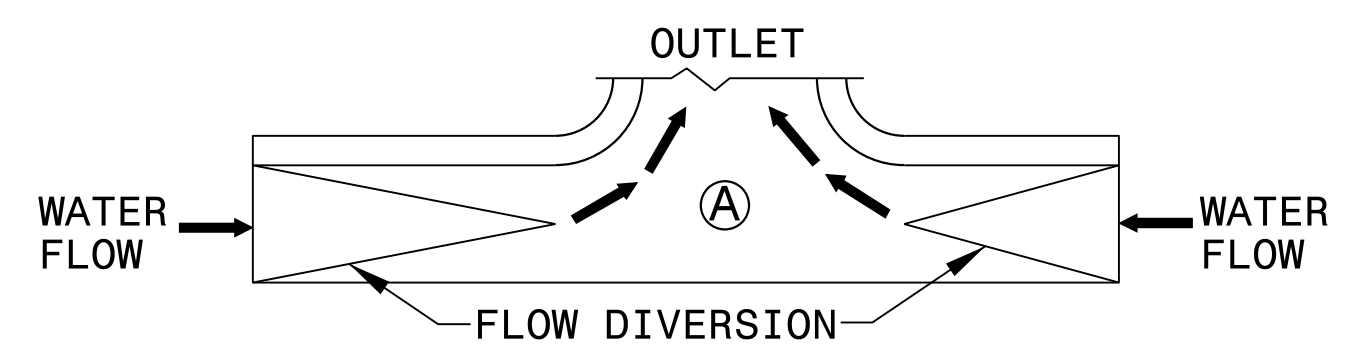
SHEET 1 OF 1 MODFLMDTCH



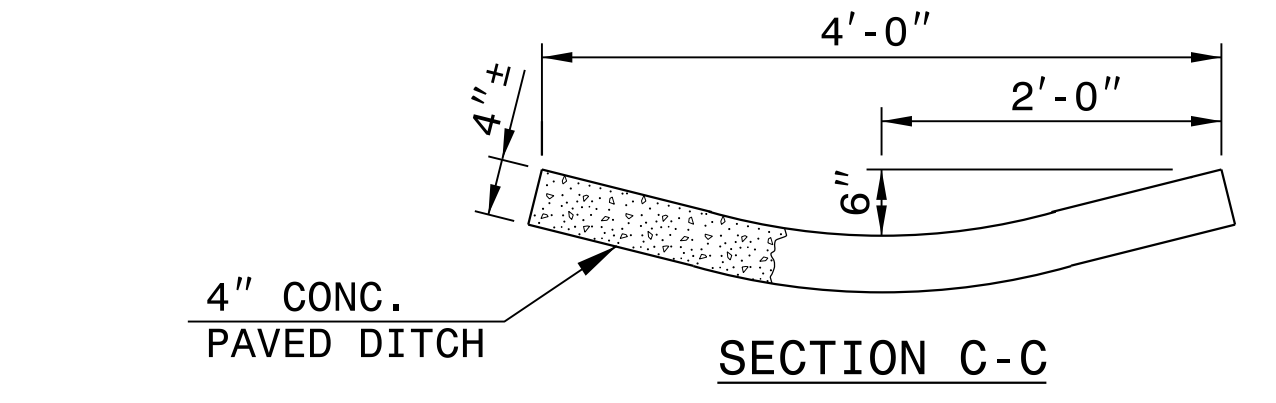
PLAN VIEW



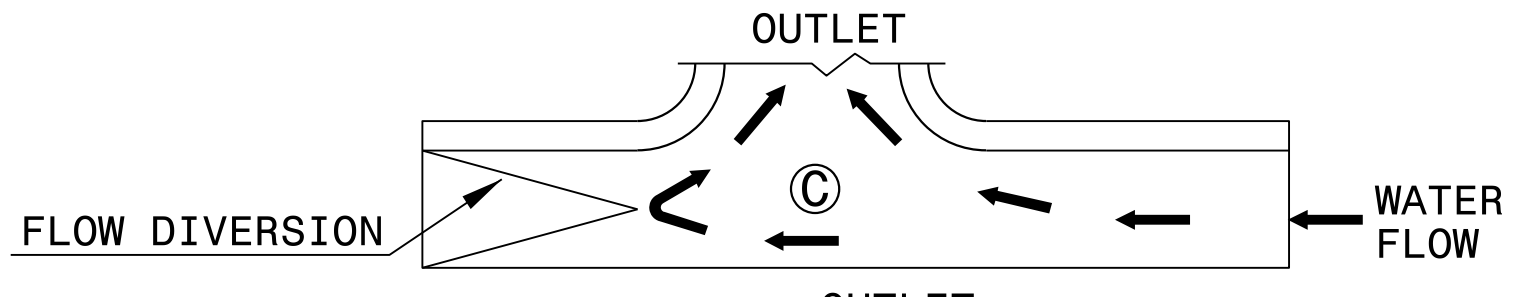
DOWNGRADE OR SAG



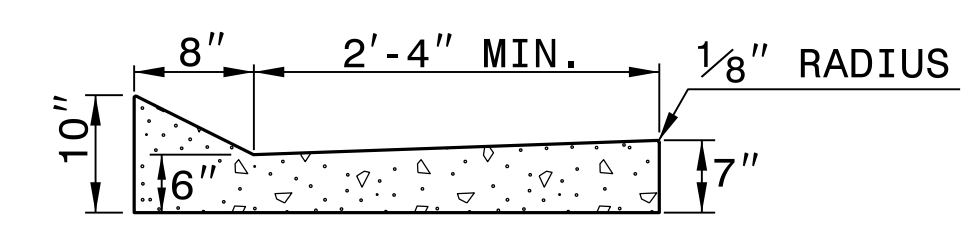
SAG



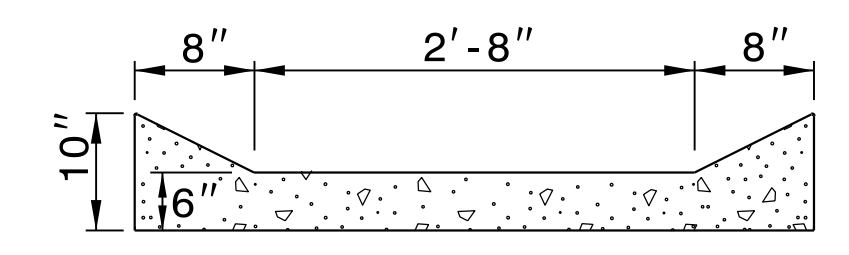
SECTION C-C



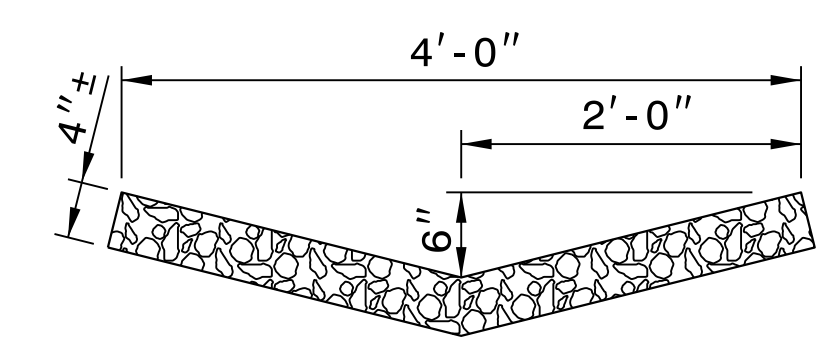
DOWN GRADE



SECTION A-A



SECTION B-B



RIP-RAP LINED DITCH

NOTES:

- CONSTRUCT MODIFIED CONCRETE FLUME AND SHOULDER BERM GUTTER IN ACCORDANCE WITH THIS DETAIL.
- CONSTRUCT CONCRETE DITCH IN ACCORDANCE WITH STD. DWG. NO. 850.01.
- CONSTRUCT RIP RAP LINED DITCH IN ACCORDANCE WITH THIS DETAIL, IF CALLED FOR IN PLANS.
- CONCRETE OR RIP RAP LINED DITCH SHALL BE THE TYPE AND LENGTH SPECIFIED BY THE ROADWAY PLANS. THE DITCH SHALL TERMINATE AS SHOWN ON THE PLANS. IF NO TERMINATION IS INDICATED PLACE RIP-RAP AT THE END OF THE DITCH AS INDICATED BY STD. DWG. 876.02 FOR AN 18" PIPE. TRANSITIONS FROM THE DITCH TO TERMINATION SHALL BE AS DIRECTED BY THE ENGINEER.
- MODIFICATIONS SHALL BE AS DICTATED BY SITE CONDITIONS AND DIRECTED BY THE ENGINEER.

DOCUMENT NOT CONSIDERED FINAL UNLESS ALL SIGNATURES COMPLETED

CONTRACT STANDARDS AND DEVELOPMENT UNIT Office 919-707-6950 FAX 919-250-4119

SEE PLATE FOR TITLE

ORIGINAL BY: E.E. Ward DATE: Apr. 2002
MODIFIED BY: J.S. Howerton DATE: October 2017
CHECKED BY: DATE:
FILE SPEC.: w:\details\stand\modifiedflume.dgn



18-QCT-2017 1417 J.S. Howerton Contracting Services, Inc. 1 CS0-232955 Details Viewcard\usr\details\stand\modifiedflume.dgn

I4-DEC-2017 10:36
 S:\Contracts\Projects\Special Details\Standard Drawings\Division 8\0862d0301.dgn
 Jhowerton AT: USD-292595

STATE OF NORTH CAROLINA DEPT. OF TRANSPORTATION DIVISION OF HIGHWAYS RALEIGH, N.C.	ROADWAY DETAIL DRAWING FOR STRUCTURE ANCHOR UNITS GUARDRAIL ANCHOR UNIT, TYPE III FOR ATTACHMENT TO RAIL ON BRIDGE	SHEET 1 OF 7 862D03
<div style="display: flex; justify-content: space-between;"> <div style="width: 45%;"> </div> <div style="width: 50%;"> <p>NOTE:</p> <ul style="list-style-type: none"> **POST NOT REQUIRED FOR SKEW ANGLES GREATER THAN 150° OR LESS THAN 30° UNLESS OTHERWISE DIRECTED BY THE ENGINEER. *THE DISTANCE FROM END OF BRIDGE RAIL TO CENTER LINE OF THE FIRST POST SHOULD BE 11½" IF CONCRETE BACKWALL IS NOT PRESENT. -SHOULDER BERM GUTTER MUST BE INSTALLED TO THE LIMITS 8" x 4" LIP CURB IS SHOWN IF ANCHOR UNIT IS NOT ADJACENT TO AN APPROACH SLAB. -MEASURE GUARDRAIL HEIGHT FROM THE TOP OF ADJACENT SURFACE (SHOULDER, BERM, OR GUTTER). -LAP JOINTS IN THE DIRECTION OF TRAFFIC FLOW. -SEE SHEET 3 FOR POST SECTIONS 1 THRU 9. </div> </div>		
GUARDRAIL ANCHOR UNIT, TYPE III FOR ATTACHMENT TO RAIL ON BRIDGE		

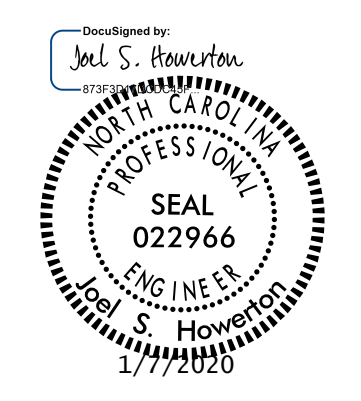
STATE OF NORTH CAROLINA DEPT. OF TRANSPORTATION DIVISION OF HIGHWAYS RALEIGH, N.C.	ROADWAY DETAIL DRAWING FOR STRUCTURE ANCHOR UNITS GUARDRAIL ANCHOR UNIT, TYPE III FOR ATTACHMENT TO RAIL ON BRIDGE - SUB REGIONAL TIER	SHEET 2 OF 7 862D03
<div style="display: flex; justify-content: space-between;"> <div style="width: 45%;"> </div> <div style="width: 50%;"> <p>NOTE:</p> <ul style="list-style-type: none"> **POST NOT REQUIRED FOR SKEW ANGLES GREATER THAN 150° OR LESS THAN 30° UNLESS OTHERWISE DIRECTED BY THE ENGINEER. *THE DISTANCE FROM END OF BRIDGE RAIL TO CENTER LINE OF THE FIRST POST SHOULD BE 11½" IF CONCRETE BACKWALL IS NOT PRESENT. -SHOULDER BERM GUTTER MUST BE INSTALLED TO THE LIMITS 8" x 4" LIP CURB IS SHOWN IF ANCHOR UNIT IS NOT ADJACENT TO AN APPROACH SLAB. -MEASURE GUARDRAIL HEIGHT FROM THE TOP OF ADJACENT SURFACE (SHOULDER, BERM, OR GUTTER). -LAP JOINTS IN THE DIRECTION OF TRAFFIC FLOW. -SEE SHEET 3 FOR POST SECTIONS 1 THRU 9. </div> </div>		
GUARDRAIL ANCHOR UNIT, TYPE III FOR ATTACHMENT TO RAIL ON BRIDGE - SUB REGIONAL TIER		

DOCUMENT NOT CONSIDERED FINAL
UNLESS ALL SIGNATURES COMPLETED

**CONTRACT STANDARDS
AND DEVELOPMENT UNIT**
Office 919-707-6950 FAX 919-250-4119

SEE TITLE BLOCK

ORIGINAL BY: J HOWERTON	DATE: 06-22-12
MODIFIED BY:	DATE:
CHECKED BY:	DATE:
FILE SPEC.:	



STATE OF NORTH CAROLINA
DEPT. OF TRANSPORTATION
DIVISION OF HIGHWAYS
RALEIGH, N.C.

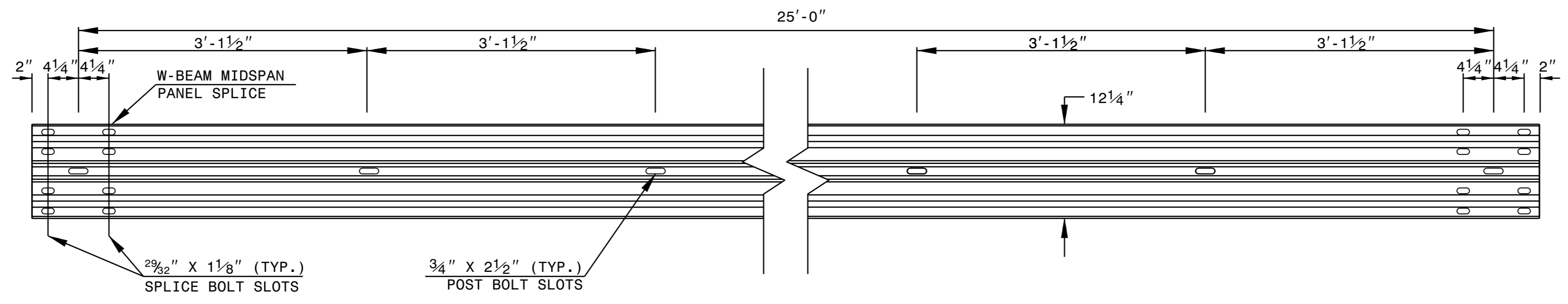
ROADWAY DETAIL DRAWING FOR
GUARDRAIL INSTALLATION

SHEET 6 OF 8
862D02

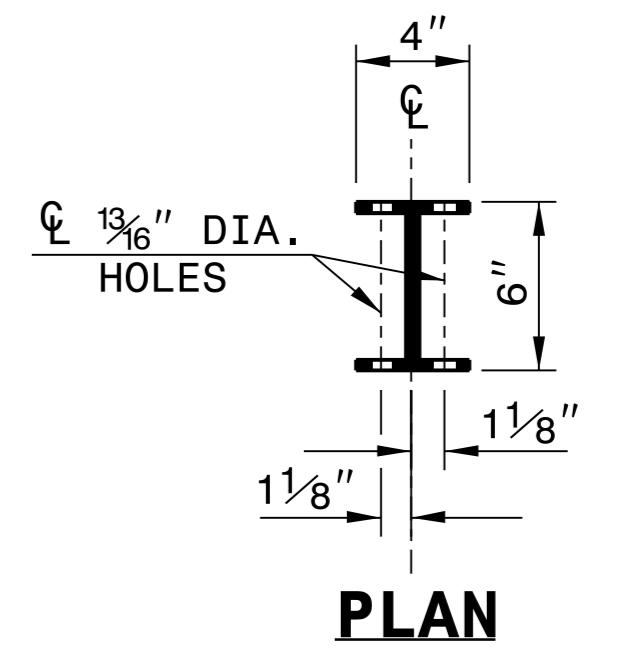
STATE OF NORTH CAROLINA
DEPT. OF TRANSPORTATION
DIVISION OF HIGHWAYS
RALEIGH, N.C.

ROADWAY DETAIL DRAWING FOR
GUARDRAIL INSTALLATION

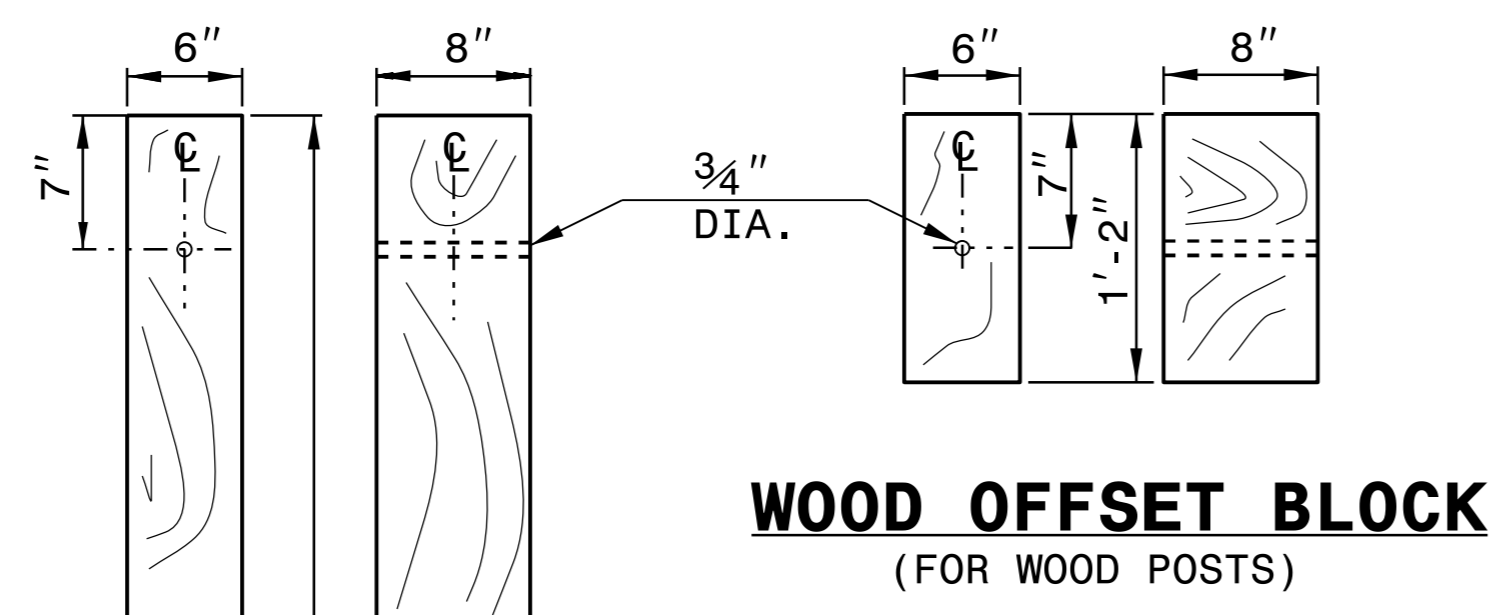
SHEET 6 OF 8
862D02



STANDARD W-BEAM GUARDRAIL



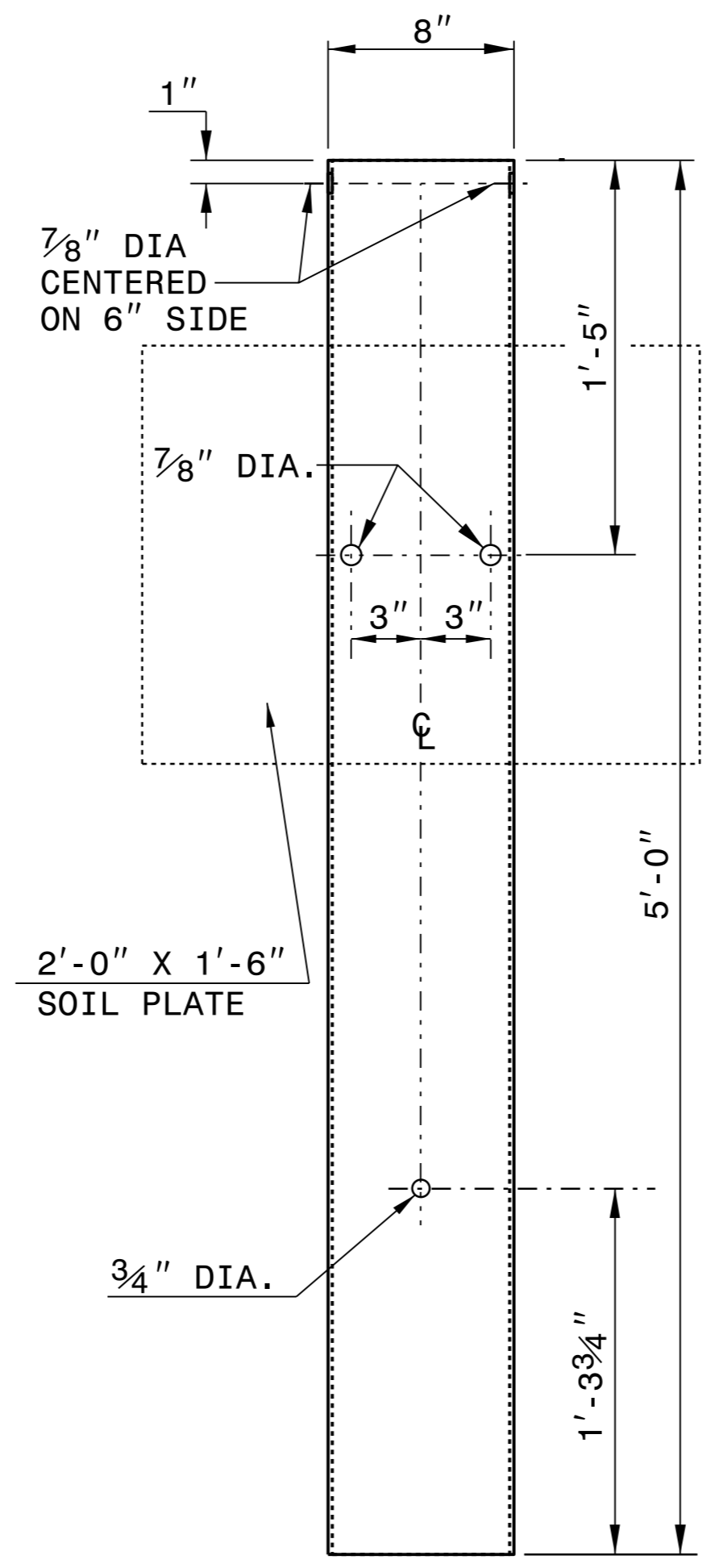
PLAN



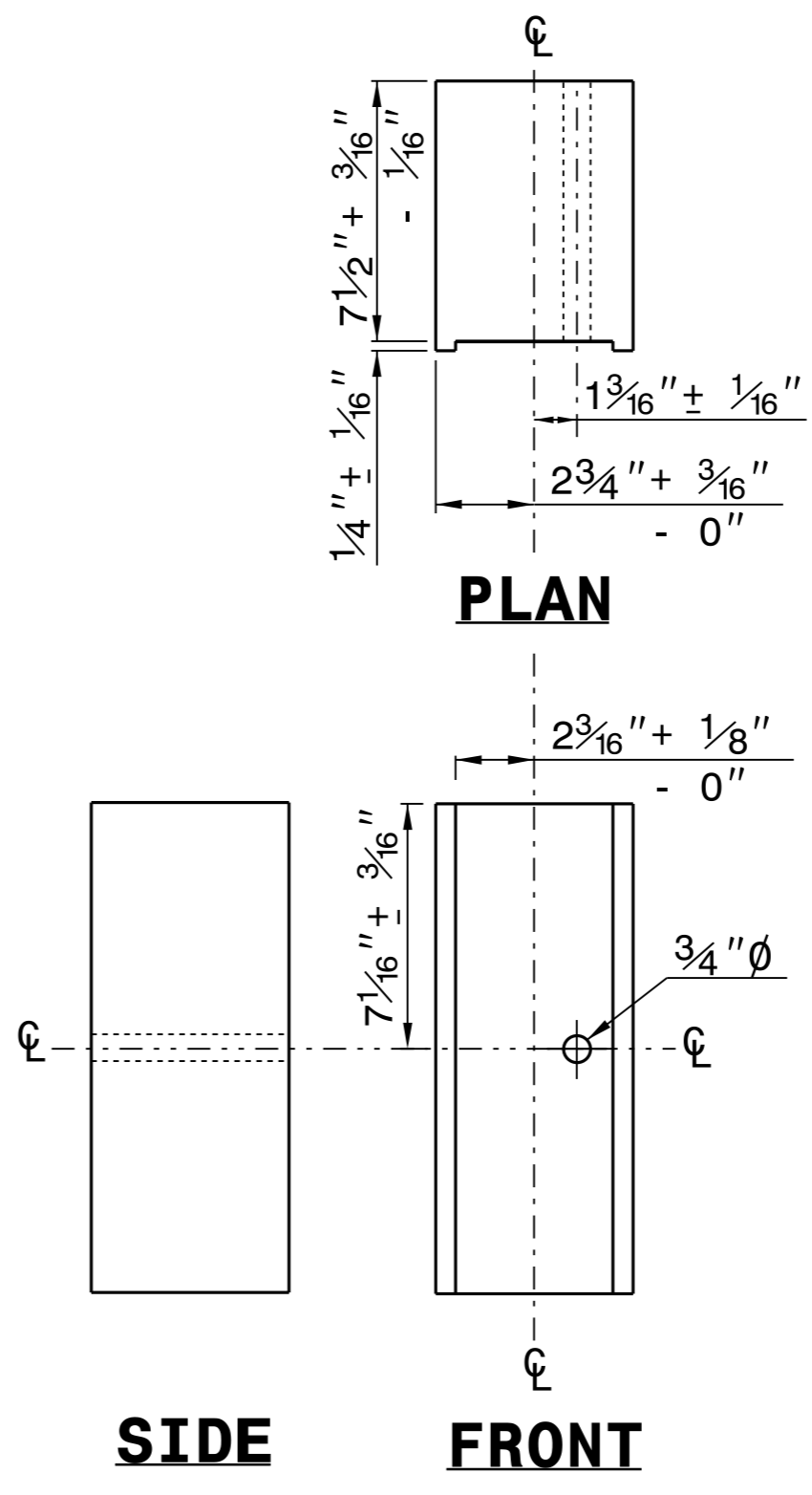
**WOOD OFFSET BLOCK
(FOR WOOD POSTS)**

**STANDARD
LINE POST**

**SHORT WOOD
BREAKAWAY POST**



**STEEL TUBE
TS 6"x8"x0.1875"**

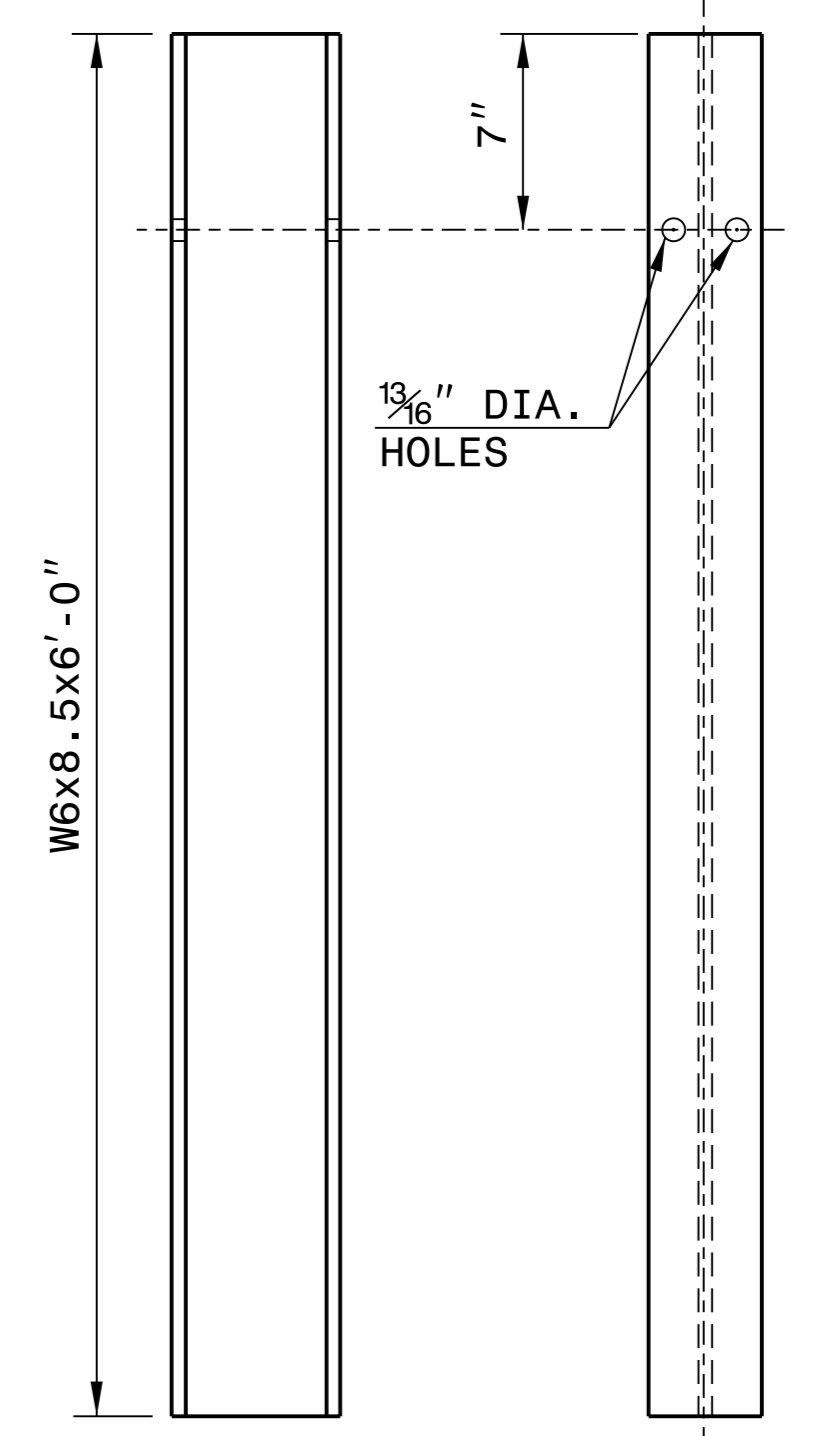


PLAN

SIDE

FRONT

**ROUTED
OFFSET BLOCK**



SIDE

FRONT

"W6" STEEL POST

SYSTEM PARTS



**CONTRACTS STANDARDS
AND DEVELOPMENT UNIT**
Office 919-707-6950 FAX 919-250-4119

SEE TITLE BLOCK

ORIGINAL BY: J. HOWERTON DATE: 3-7-2018
MODIFIED BY: DATE: _____
CHECKED BY: DATE: _____
FILE SPEC.: _____

12/06/07

COMPUTED BY: SLK DATE: 01/08/19
CHECKED BY: GSP DATE: 01/08/19

SUMMARY OF EARTHWORK

Table with columns: STATION, STATION, UNCL. EXCAV. (CY), EMBANK. (CY), BORROW (CY), WASTE (CY). Includes subtotals and grand totals for excavation, embankment, and borrow.

UNDERCUT EXCAVATION = 300 CY
GEOTEXTILE SOIL STABILIZATION = 300 SY
SELECT GRANULAR MATERIAL = 300 CY

Approximate quantities only. Unclassified excavation, borrow excavation, fine grading, clearing and grubbing, and removal of existing pavement will be paid for at the lump sum price for "Grading".

NOTE: Earthwork quantities are calculated by the Roadway Engineer. These earthwork quantities are based in part on subsurface data provided by the Geotechnical Engineering Unit.

STATE OF NORTH CAROLINA
DIVISION OF HIGHWAYS

ASPHALT PAVEMENT REMOVAL SUMMARY

Table with columns: SURVEY LINE, STATION, STATION, LOCATION LT/RT/CL, YD'. Shows asphalt removal quantities for various stations.

SHOULDER BERM GUTTER SUMMARY

Table with columns: SURVEY LINE, STATION, STATION, LOCATION, LENGTH. Shows shoulder berm gutter quantities for various stations.

BRIDGE #320003
BRIDGE #320004
BRIDGE #320005

PROJECT REFERENCE NO. BR-0111 SHEET NO. 3B-1
DOCUMENT NOT CONSIDERED FINAL UNLESS ALL SIGNATURES COMPLETED
WETHERILL ENGINEERING
TRANSPORTATION PLANNING/DESIGN - BRIDGE/STRUCTURE DESIGN
CIVIL/SITE DESIGN - GIS/GPS - CONSTRUCTION OBSERVATION

SUB-REGIONAL & REGIONAL LIST OF PIPES, ENDWALLS, ETC. (FOR PIPES 48" & UNDER)

NOTE: Invert Elevations are for Bid Purposes only and shall not be used for project construction stakeout. See "Standard Specifications For Roads and Structures, Section 300-5".

Large table listing pipes, endwalls, and structures. Columns include Station, Location, Structure No., Top Elevation, Invert Elevation, Slope Critical, Drainage Pipe, C.S. Pipe, R.C. Pipe (Class III/IV), Endwalls, Frame, Grates, and Hood, Concrete Transitional Section, and Remarks.

"N" = DISTANCE FROM EDGE OF LANE TO FACE OF GUARDRAIL.
TOTAL SHOULDER WIDTH = DISTANCE FROM EDGE OF TRAVEL LANE TO SHOULDER BREAK POINT.
FLARE LENGTH = DISTANCE FROM LAST SECTION OF PARALLEL GUARDRAIL TO END OF GUARDRAIL.

GUARDRAIL SUMMARY

Table summarizing guardrail data. Columns include Survey Line, Beg. Sta., End Sta., Location, Length, Warrant Point, Flare Length, W, Anchors, Impact Attenuator, Single Faced Guardrail, Remove Existing Guardrail, and Remove and Stockpile Existing Guardrail.

12/14/2009 BR-0111_Rdy_sum.dgn

COMPUTED BY: Thein Tun Zan DATE: 10-21-2019
 CHECKED BY: James Batts DATE: 10-21-2019

(12-17-19)

PROJECT NO.	SHEET NO.
BR-0111	3G-1

**STATE OF NORTH CAROLINA
 DIVISION OF HIGHWAYS**

SUMMARY OF SUBSURFACE DRAINAGE

LINE	Station	Station	Location LT/RT/CL	Drain Type* UD/BD/SD	LF
CONTINGENCY				SD	200
				TOTAL LF:	200

*UD = Underdrain
 *BD = Blind Drain
 *SD = Subsurface Drain

SUMMARY OF ROCK PLATING

LINE	Beginning Slope (H:V)	Approx. Station	Ending Slope (H:V)	Approx. Station	Location LT/RT	Rock Plating Detail No. 1/2/3/4	Riprap Class* 1/2/B	Rock Plating SY
L	2:1	15+82	2:1	16+08	RT	1	*	25
L	2:1	15+76	2:1	16+08	LT	1	*	40
L	2:1	17+52	2:1	19+81	RT	1	*	90
L	2:1	17+52	2:1	18+62	LT	1	*	125
L	2:1	28+24	2:1	30+04	RT	1	*	160
							TOTAL SY:	440

*Use Class 1, 2 or B riprap if riprap class is not shown for rock plating location.



1223 Jones Franklin Rd.
Raleigh, N.C. 27606
License No. F-0377
Bus: 919 851 8077
Fax: 919 851 8107

PROJECT REFERENCE NO. **BR-0111** SHEET NO. **4**

RW SHEET NO.

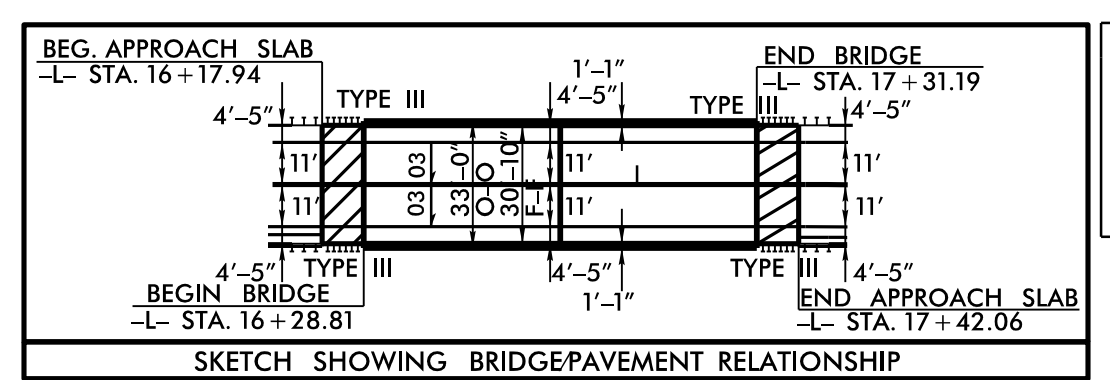
ROADWAY DESIGN ENGINEER 1/14/2020
HYDRAULICS ENGINEER 1/14/2020

PROFESSIONAL SEAL 022999
PROFESSIONAL SEAL 044561

CONSTRUCTION OBSERVATION

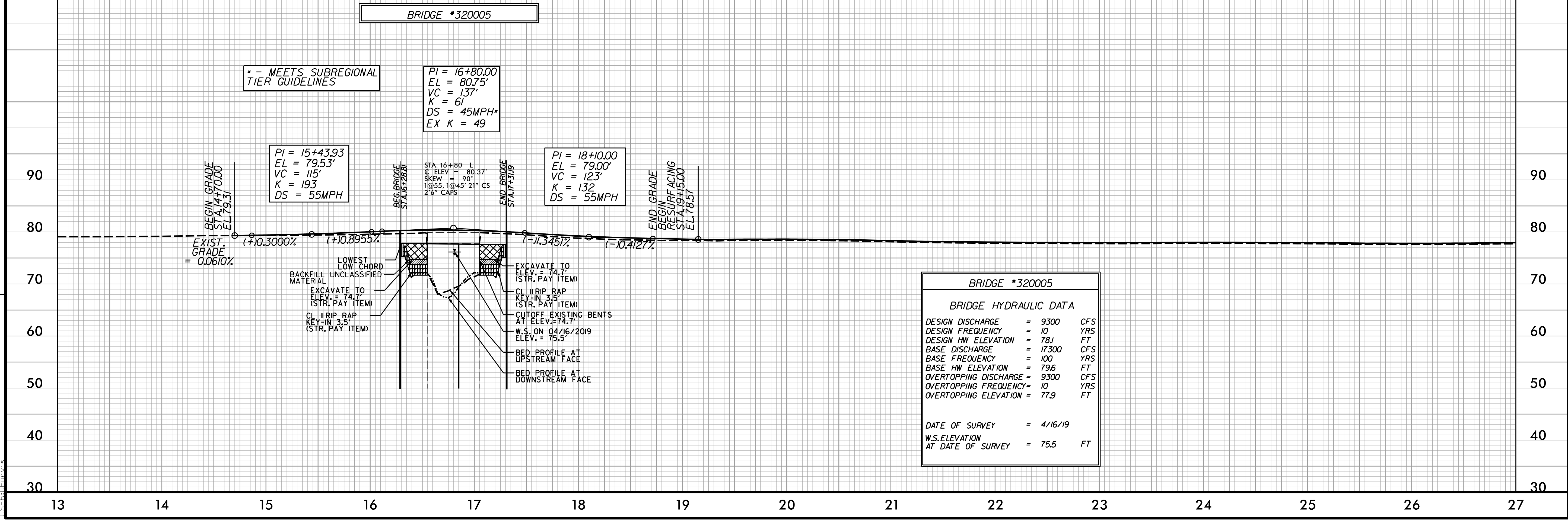
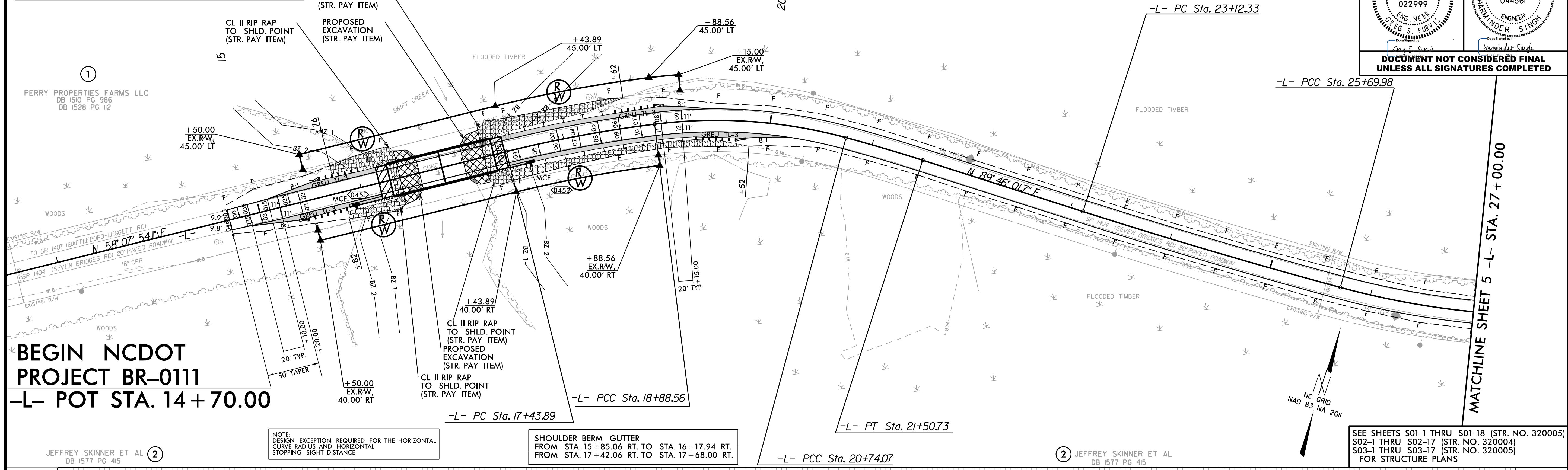
PERRY PROPERTIES FARMS LLC
DB 1510 PG 986
DB 1528 PG 112

DOCUMENT NOT CONSIDERED FINAL
UNLESS ALL SIGNATURES COMPLETED



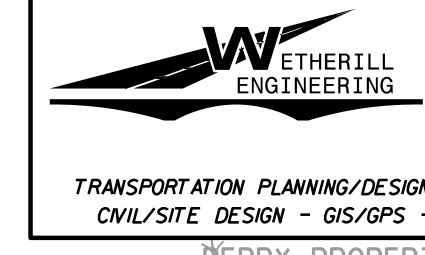
ROCK PLATE SLOPES SEE RSD 275.01

FROM STA. 15+82 +/- RT. TO STA. 16+08 +/- RT.	PI Sta 18+16.31	PI Sta 19+82.50	PI Sta 21+12.40	PI Sta 24+41.8	PI Sta 26+84.33
FROM STA. 15+76 +/- LT. TO STA. 16+08 +/- LT.	$\Delta = 6' 47' 36.7''$ (RT)	$\Delta = 22' 14' 28.0''$ (RT)	$\Delta = 2' 36' 03.0''$ (RT)	$\Delta = 2' 36' 54.5''$ (LT)	$\Delta = 16' 38' 43.9''$ (LT)
FROM STA. 17+52 +/- RT. TO STA. 19+81 +/- RT.	$D = 4' 41' 44.3''$	$D = 11' 59' 22.7''$	$D = 3' 23' 33.3''$	$D = 1' 00' 53.9''$	$D = 7' 19' 48.1''$
FROM STA. 17+52 +/- LT. TO STA. 18+62 +/- LT.	$L = 144.68'$	$L = 185.50'$	$L = 76.66'$	$L = 257.65'$	$L = 227.09'$
FROM STA. 28+24 +/- RT. TO STA. 30+04 +/- RT.	$T = 72.42'$	$T = 93.93'$	$T = 38.34'$	$T = 128.85'$	$T = 114.35'$
	$R = 1,220.19'$	$R = 477.88'$	$R = 1,688.85'$	$R = 5,644.99'$	$R = 781.66'$
	$DS = 55$ MPH	$DS = 35$ MPH	$DS = 55$ MPH	$DS = 55$ MPH	$DS = 45$ MPH
	$SE = SEE$ PLANS	$SE = EXIST.$	$SE = EXIST.$	$SE = EXIST.$	$SE = EXIST.$



REVISIONS

1/7/2020
11:51:00 AM
1111_rdu_psh_4.dgn



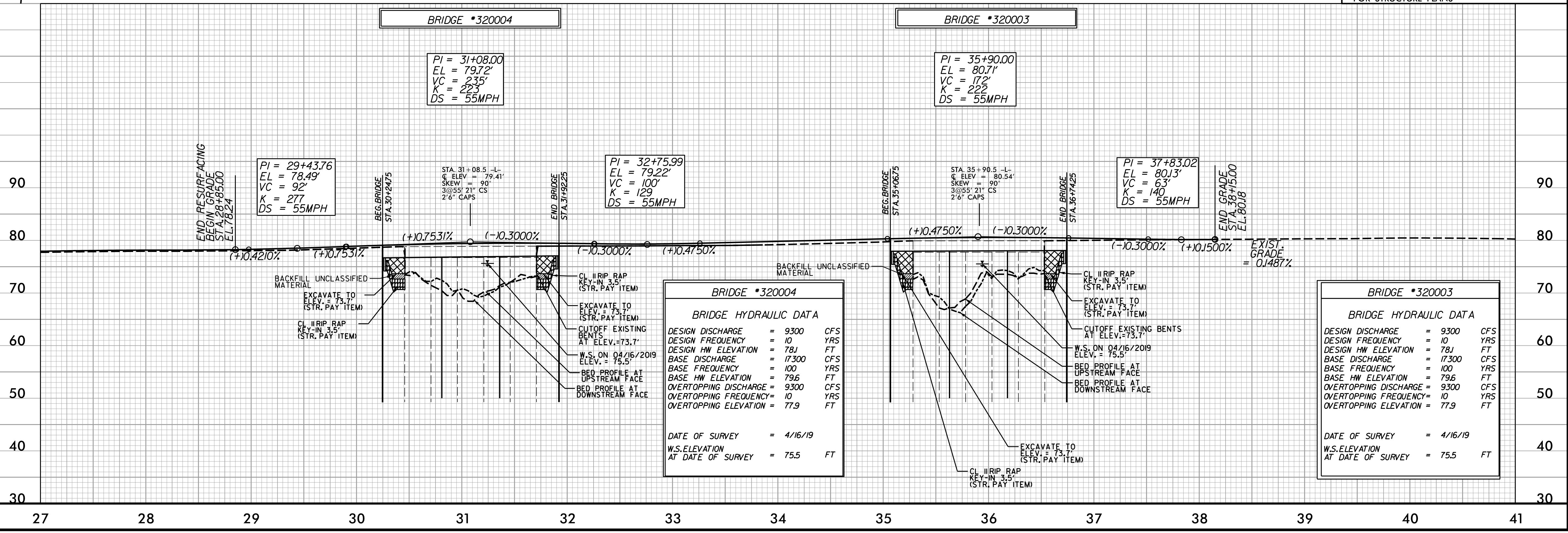
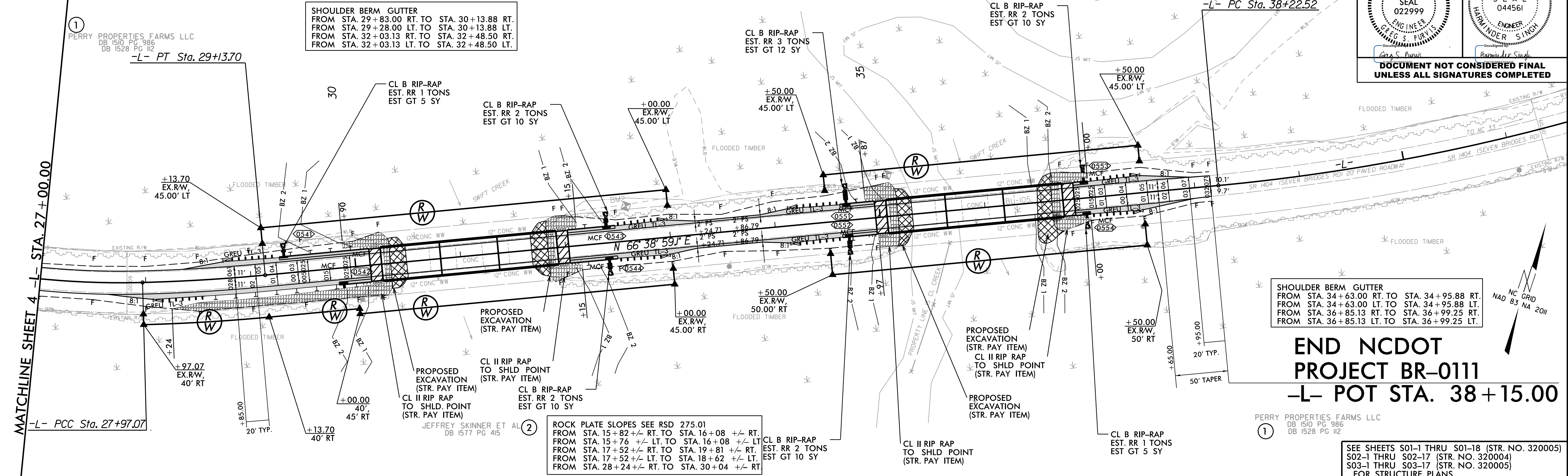
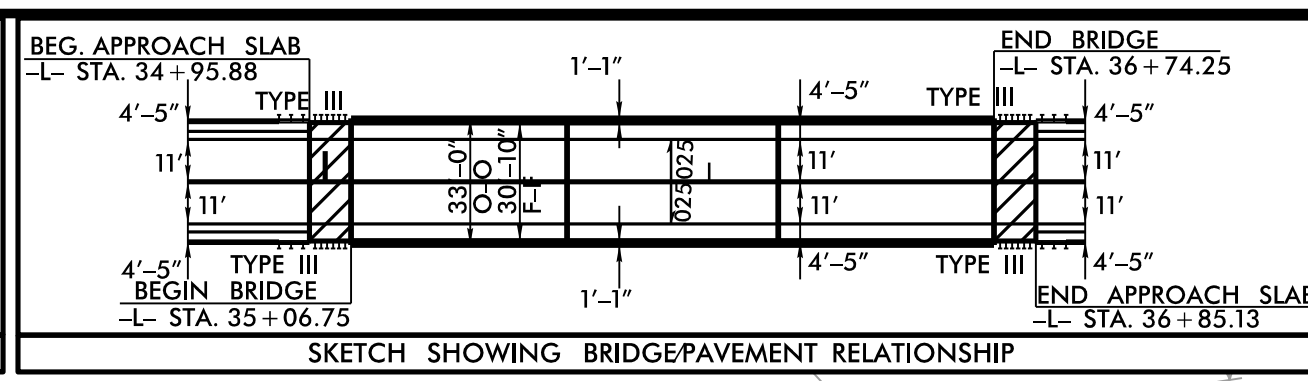
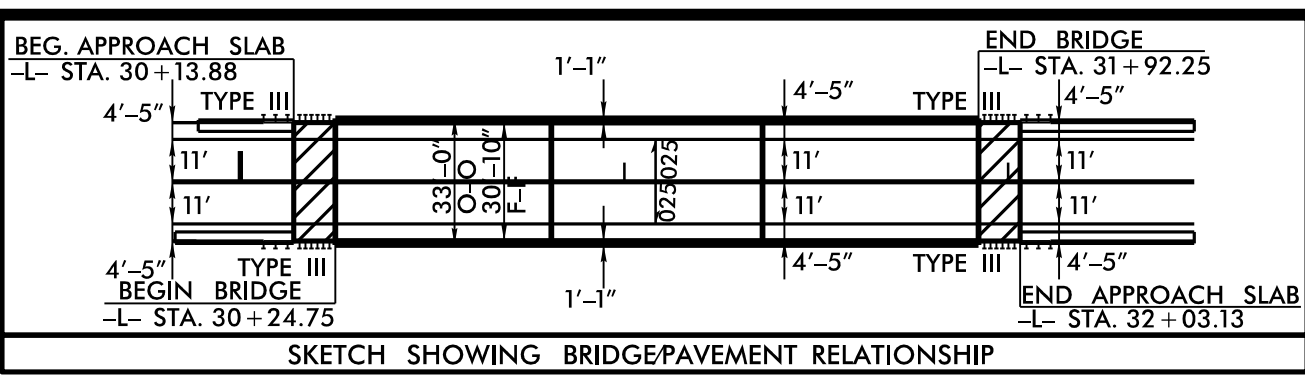
1223 Jones Franklin Rd.
Raleigh, N.C. 27606
License No. F-0377
Bus: 919 851 8077
Fax: 919 851 8107

PROJECT REFERENCE NO. BR-011	SHEET NO. 5
RW SHEET NO.	HYDRAULICS ENGINEER 1/13/2020
ROADWAY DESIGN ENGINEER 1/14/2020	SEAL 022999
	SEAL 044561
<p>DOCUMENT NOT CONSIDERED FINAL UNLESS ALL SIGNATURES COMPLETED</p>	

PI Sta 26+84.33 Δ = 16° 38' 43.9" (LT)
D = 7' 19" 48.1"
L = 227.09'
T = 114.35'
R = 781.66'
DS = 45 MPH
SE = EXIST.

PI Sta 28+55.41 Δ = 3° 51' 24.2" (LT)
D = 3' 18" 24.2"
L = 116.63'
T = 58.34'
R = 1732.71'
DS = 55 MPH
SE = SEE PLANS

PI Sta 40+26.90 Δ = 11° 58' 28.9" (LT)
D = 2' 56" 24.9"
L = 407.27'
T = 204.38'
R = 1948.67'



REVISIONS

1/7/2020
11:58:11 AM
1111_rdu_psh_5.dgn