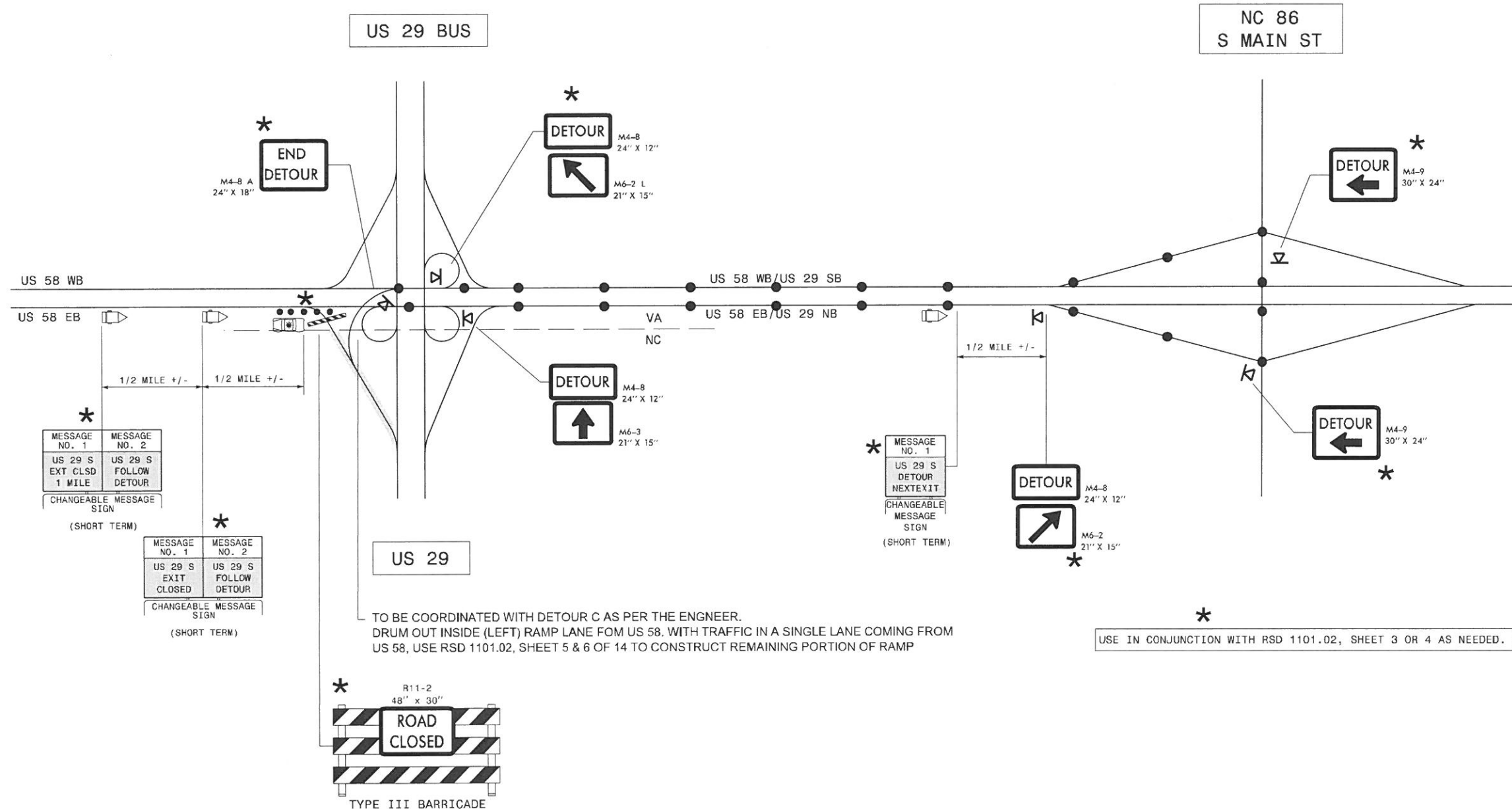


* TO BE COORDINATED WITH VDOT



* USE IN CONJUNCTION WITH RSD 1101.02, SHEET 3 OR 4 AS NEEDED.

GENERAL NOTES

1. THIS DRAWING IS INTENDED FOR USE DURING SHORT TERM CLOSURE OF US 58 EB RAMP TO US 29 SB.
2. RAMP CLOSURE SHALL BE APPROVED BY THE ENGINEER.
3. IF RAMP CLOSURE RESTRICTIONS APPLY, SEE SPECIAL PROVISION, "INTERMEDIATE CONTRACT TIMES AND LIQUIDATED DAMAGES".

LAW ENFORCEMENT

DETOUR ROUTE