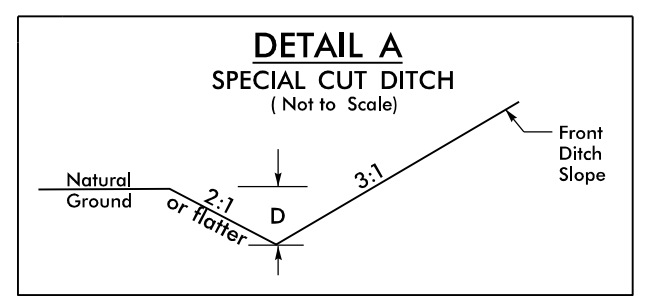
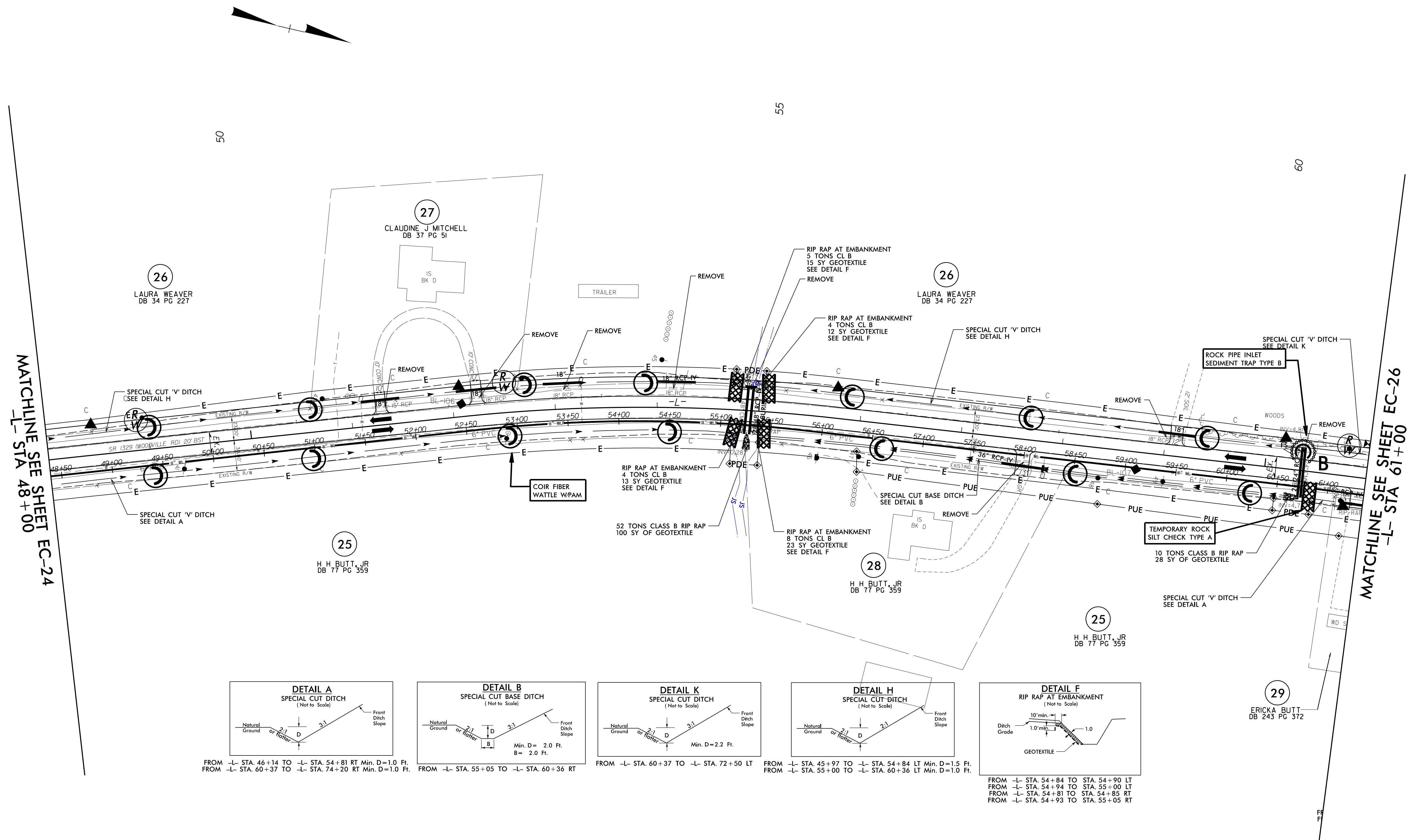
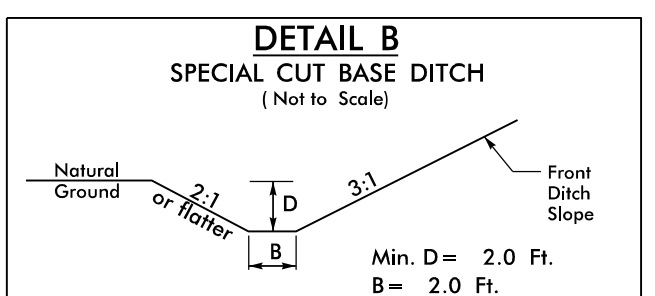


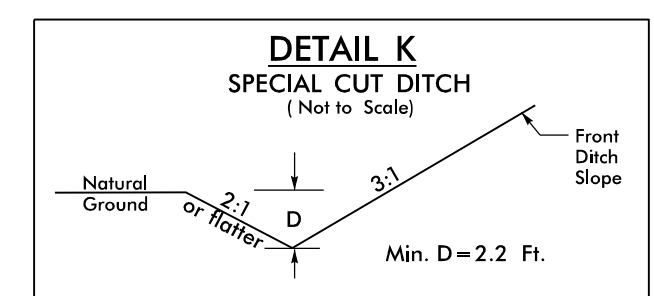
5/14/99
 I:\DEC-2016\19-035\19-035-740\Hydr-aulics\CADD\PSH\E&S\AR5740_rdy_PSH_25.dgn
 \$\$\$\$SUSAN RICHARDS\$\$\$\$



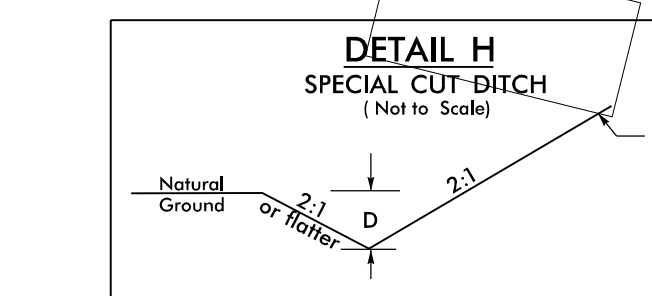
FROM -L- STA. 46+14 TO -L- STA. 54+81 RT. Min. D=1.0 Ft.
FROM -L- STA. 60+37 TO -L- STA. 74+20 RT. Min. D=1.0 Ft.



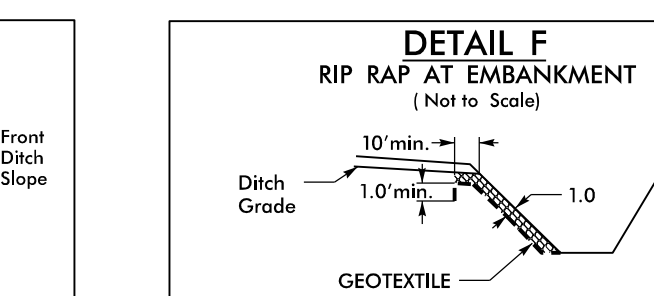
FROM -L- STA. 55+05 TO -L- STA. 60+36 RT.
Min. D = 2.0 Ft.
B = 2.0 Ft.



FROM -L- STA. 60+37 TO -L- STA. 72+50 LT.
Min. D = 2.2 Ft.



FROM -L- STA. 45+97 TO -L- STA. 54+84 LT. Min. D=1.5 Ft.
FROM -L- STA. 55+00 TO -L- STA. 60+36 LT. Min. D=1.0 Ft.



FROM -L- STA. 54+84 TO STA. 54+90 LT.
FROM -L- STA. 54+94 TO STA. 55+00 LT.
FROM -L- STA. 54+81 TO STA. 54+85 RT.
FROM -L- STA. 54+93 TO STA. 55+05 RT.

INSTALL MATTING FOR EROSION CONTROL IN THE PROPOSED DITCH LINE.