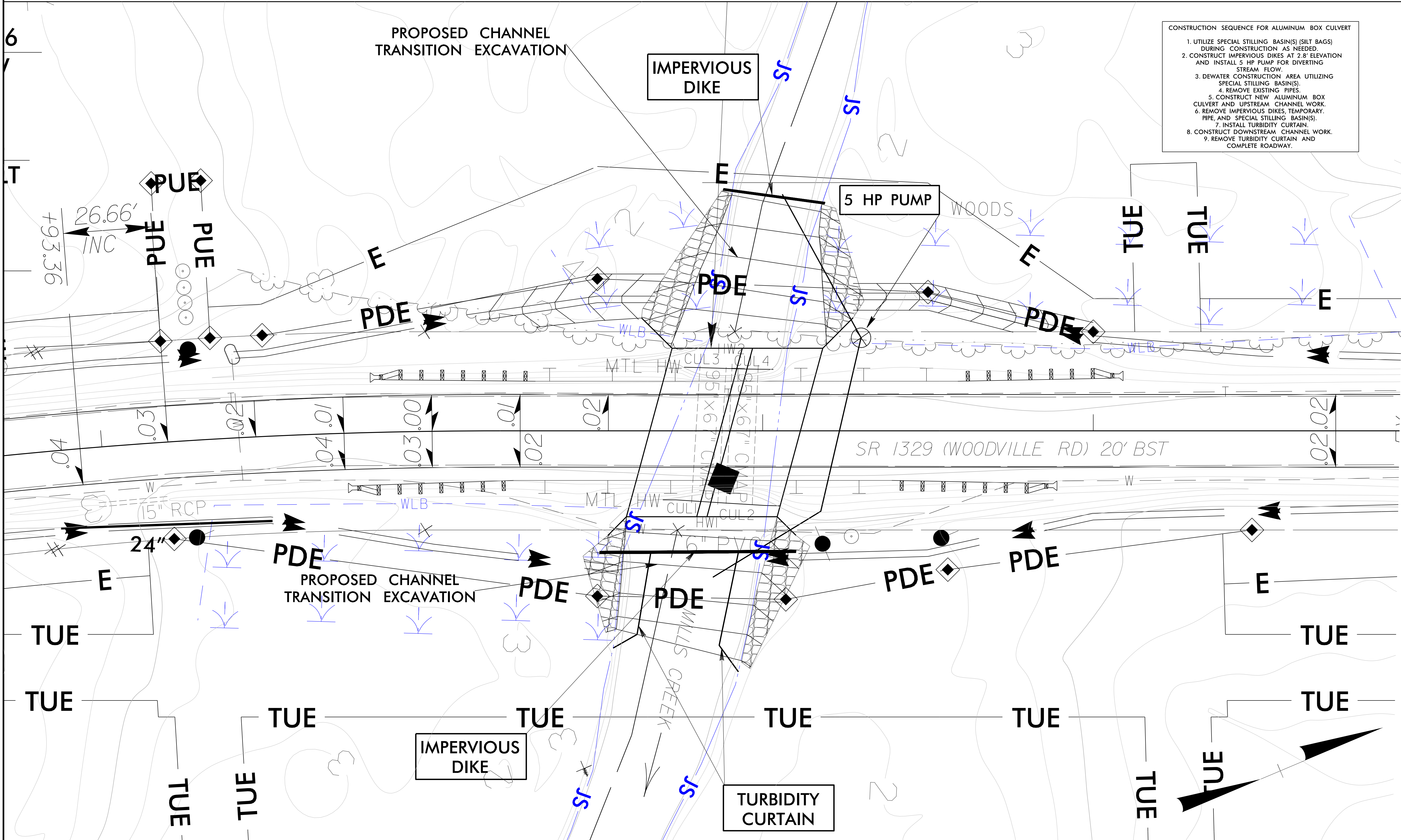


CULVERT CONSTRUCTION SEQUENCE STA. 132+88.62 -L-



- CONSTRUCTION SEQUENCE FOR ALUMINUM BOX CULVERT**
1. UTILIZE SPECIAL STILLING BASIN(S) (SILT BAGS) DURING CONSTRUCTION AS NEEDED.
 2. CONSTRUCT IMPERVIOUS DIKES AT 2.8' ELEVATION AND INSTALL 5 HP PUMP FOR DIVERTING STREAM FLOW.
 3. DEWATER CONSTRUCTION AREA UTILIZING SPECIAL STILLING BASIN(S).
 4. REMOVE EXISTING PIPES.
 5. CONSTRUCT NEW ALUMINUM BOX CULVERT AND UPSTREAM CHANNEL WORK.
 6. REMOVE IMPERVIOUS DIKES, TEMPORARY PIPE, AND SPECIAL STILLING BASIN(S).
 7. INSTALL TURBIDITY CURTAIN.
 8. CONSTRUCT DOWNSTREAM CHANNEL WORK.
 9. REMOVE TURBIDITY CURTAIN AND COMPLETE ROADWAY.