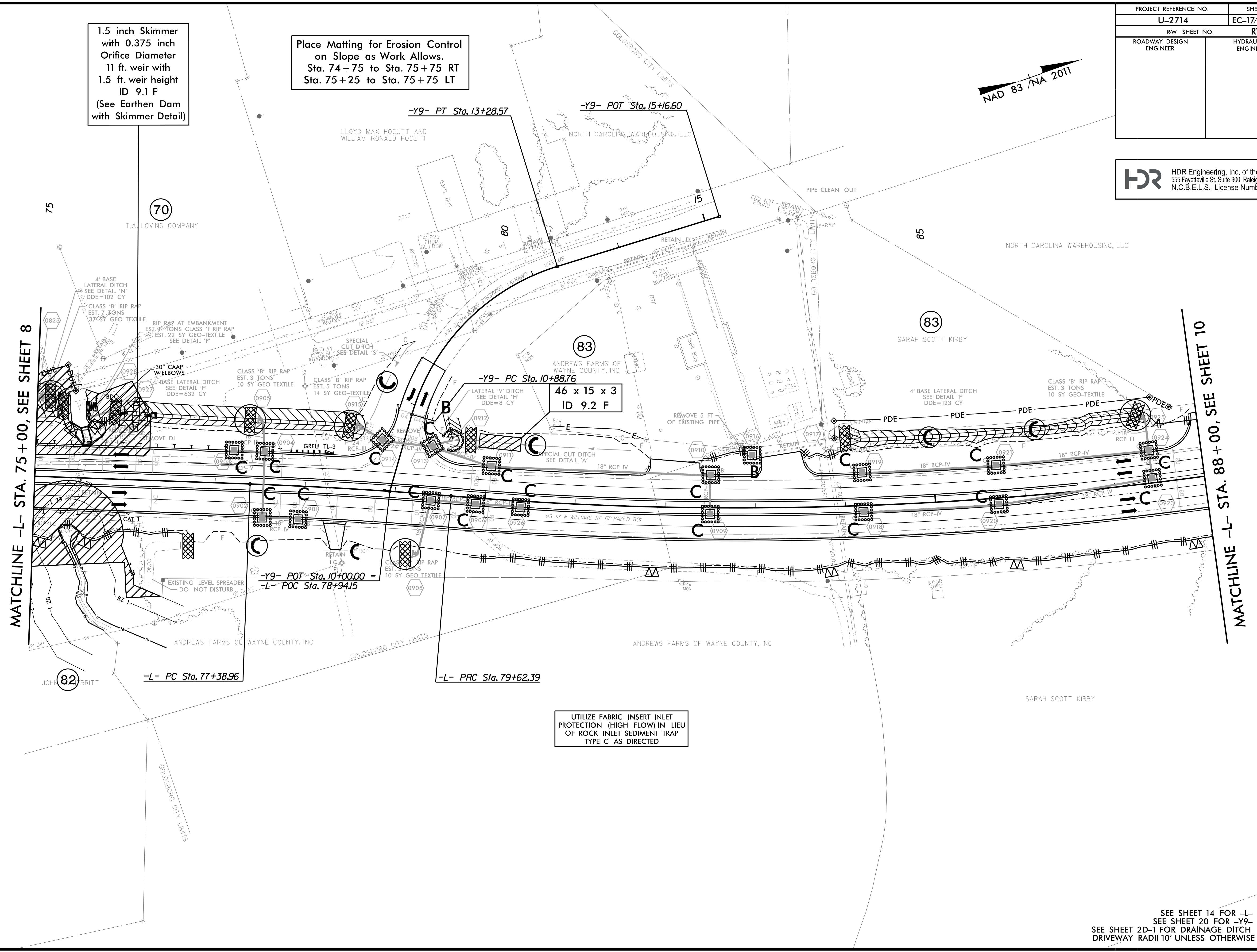
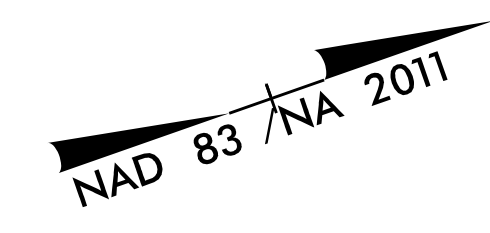


PLOT DRIVER: NCDOT_color_eng_50.plt
 USER: MDIEHL
 FILE: North_Carolina_Dept_of_Transportation\NCDOT_Infrastructure\Erosion_Control\U2714_EC_PSH.dgn
 PENTABLE: NCDOT_EC_FINAL_BW.tbl
 TIME: 5:08:12 PM
 DATE: 12/10/2019
 REVISIONS

PROJECT REFERENCE NO.	SHEET NO.
U-2714	EC-17/CONST.9
R/W SHEET NO.	RW-9
ROADWAY DESIGN ENGINEER	HYDRAULICS ENGINEER

HDR HDR Engineering, Inc. of the Carolinas
 555 Fayetteville St. Suite 900 Raleigh, N.C. 27601
 N.C.B.E.L.S. License Number: F-0116



1.5 inch Skimmer
 with 0.375 inch
 Orifice Diameter
 11 ft. weir with
 1.5 ft. weir height
 ID 9.1 F
 (See Earthen Dam
 with Skimmer Detail)

Place Matting for Erosion Control
 on Slope as Work Allows.
 Sta. 74+75 to Sta. 75+75 RT
 Sta. 75+25 to Sta. 75+75 LT

46 x 15 x 3
 ID 9.2 F

UTILIZE FABRIC INSERT INLET
 PROTECTION (HIGH FLOW) IN LIEU
 OF ROCK INLET SEDIMENT TRAP
 TYPE C AS DIRECTED

MATCHLINE -L- STA. 75+00, SEE SHEET 8

MATCHLINE -L- STA. 88+00, SEE SHEET 10

SEE SHEET 14 FOR -L- PROFILE
 SEE SHEET 20 FOR -Y9- PROFILE
 SEE SHEET 2D-1 FOR DRAINAGE DITCH DETAILS
 DRIVEWAY RADII 10' UNLESS OTHERWISE NOTED