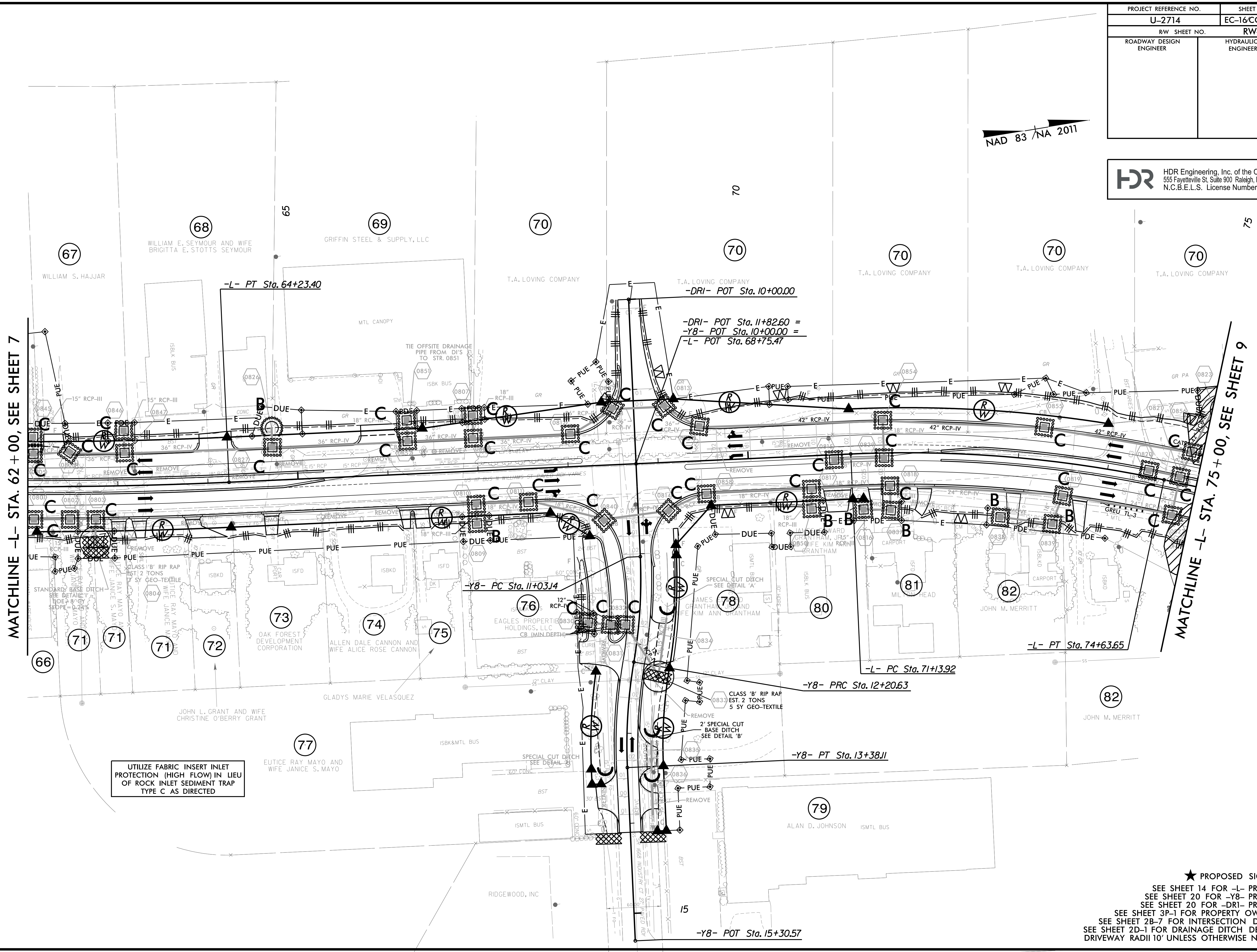
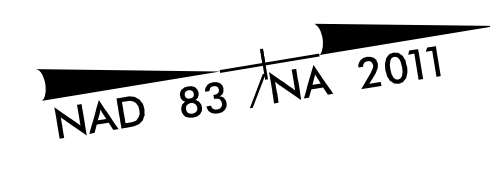


PROJECT REFERENCE NO.	SHEET NO.
U-2714	EC-16/CONST.8
R/W SHEET NO.	RW-8
ROADWAY DESIGN ENGINEER	HYDRAULICS ENGINEER

**HDR** HDR Engineering, Inc. of the Carolinas  
 555 Fayetteville St. Suite 900 Raleigh, N.C. 27601  
 N.C.B.E.L.S. License Number: F-0116



MATCHLINE -L- STA. 62 + 00, SEE SHEET 7

MATCHLINE -L- STA. 75 + 00, SEE SHEET 9

-DRI- POT Sta. 11+82.60 =  
 -Y8- POT Sta. 10+00.00 =  
 -L- POT Sta. 68+75.47

-Y8- PC Sta. 11+03.14

-L- PC Sta. 71+13.92

-Y8- PRC Sta. 12+20.63

-Y8- PT Sta. 13+38.11

-L- PT Sta. 74+63.65

-Y8- POT Sta. 15+30.57

UTILIZE FABRIC INSERT INLET  
 PROTECTION (HIGH FLOW) IN LIEU  
 OF ROCK INLET SEDIMENT TRAP  
 TYPE C AS DIRECTED

★ PROPOSED SIGNAL  
 SEE SHEET 14 FOR -L- PROFILE  
 SEE SHEET 20 FOR -Y8- PROFILE  
 SEE SHEET 20 FOR -DRI- PROFILE  
 SEE SHEET 3P-1 FOR PROPERTY OWNERS  
 SEE SHEET 2B-7 FOR INTERSECTION DETAIL  
 SEE SHEET 2D-1 FOR DRAINAGE DITCH DETAILS  
 DRIVEWAY RADII 10' UNLESS OTHERWISE NOTED

PLOT DRIVER: NCDOT\_color\_eng\_50.plt  
 USER: MDIEHL  
 DATE: 12/10/2019  
 TIME: 5:08:00 PM  
 FILE: North\_Carolina\_Dept\_of\_Transportation\NCDOT\Western\_Div\Or-Coll\M\_NCDOT-U2714\_US117.cad\_CAD\_BIM\6.2\_Work\_In\_Progress\U-2714\_NCDOT\_File\_Structure\Erosion\_Control\U2714\_EC\_PSH.dgn

REVISIONS