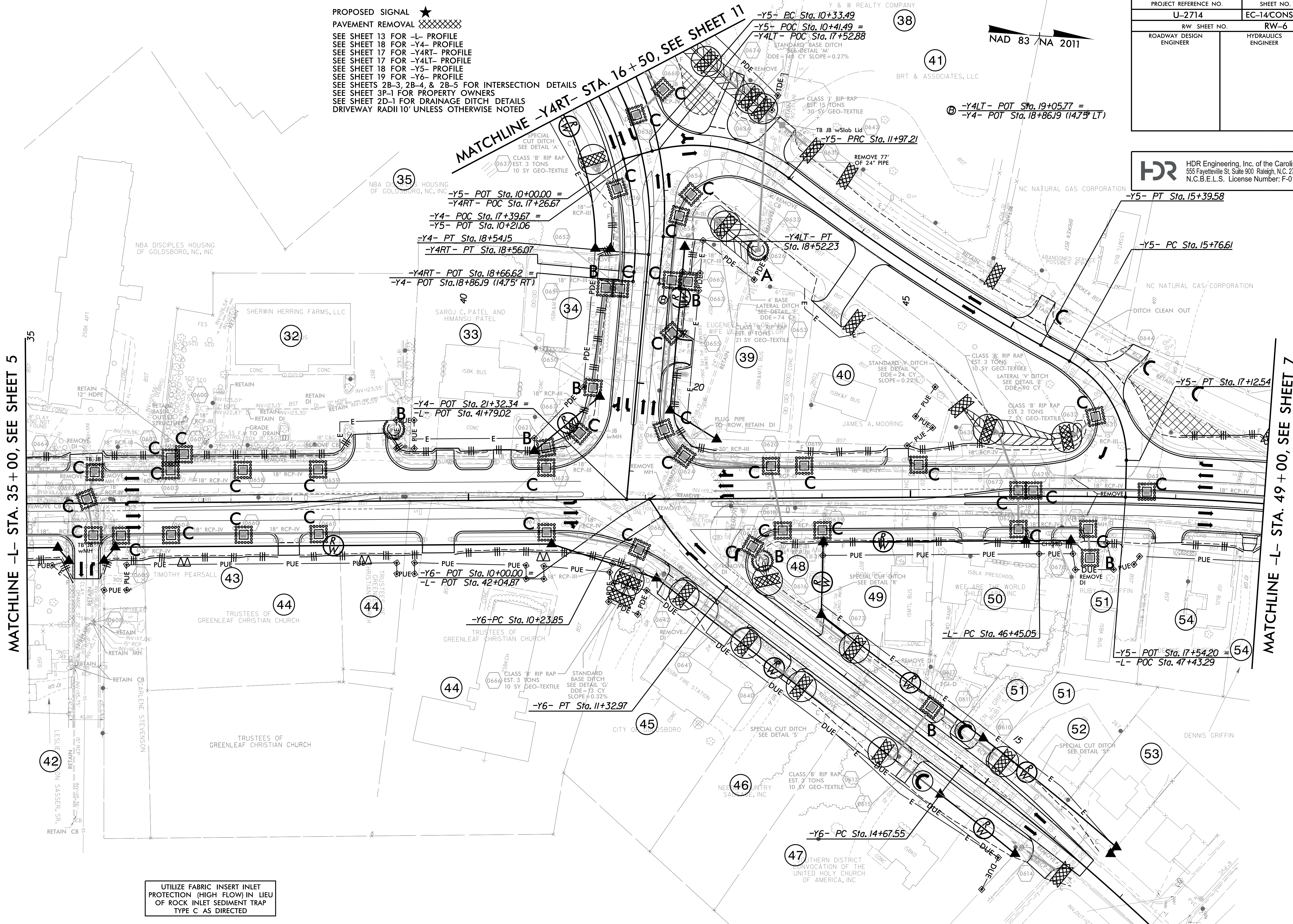


PROPOSED SIGNAL ★  
 PAVEMENT REMOVAL XXXXXXXX  
 SEE SHEET 13 FOR -L- PROFILE  
 SEE SHEET 18 FOR -Y4- PROFILE  
 SEE SHEET 17 FOR -Y4RT- PROFILE  
 SEE SHEET 17 FOR -Y4LT- PROFILE  
 SEE SHEET 18 FOR -Y5- PROFILE  
 SEE SHEET 19 FOR -Y6- PROFILE  
 SEE SHEETS 2B-3, 2B-4, & 2B-5 FOR INTERSECTION DETAILS  
 SEE SHEET 3P-1 FOR PROPERTY OWNERS  
 SEE SHEET 2D-1 FOR DRAINAGE DITCH DETAILS  
 DRIVEWAY RADII 10' UNLESS OTHERWISE NOTED

PROJECT REFERENCE NO.	SHEET NO.
U-2714	EC-14/CONST.6
RW SHEET NO.	RW-6
ROADWAY DESIGN ENGINEER	HYDRAULICS ENGINEER

**HDR** HDR Engineering, Inc. of the Carolinas  
 555 Fayetteville St. Suite 900 Raleigh, N.C. 27601  
 N.C.B.E.L.S. License Number: F-0116

NAD 83 / NA 2011



UTILIZE FABRIC INSERT INLET PROTECTION (HIGH FLOW) IN LIEU OF ROCK INLET SEDIMENT TRAP TYPE C AS DIRECTED

PLOT DRIVER: NCDOT\_color\_eng\_50.plt  
 USER: MDIEHL  
 PENTABLE: NCDOT\_EC\_FINAL\_BW.tbl  
 TIME: 5:07:35 PM  
 DATE: 12/10/2019  
 FILE: North\_Carolina\_Dept\_of\_Transportation\NCDOT\_Western\_Div\_Or-Coll\_M\_NCDOT-U2714\_US117.cad\_CAD\_BIM\_v2.Work\_In\_Progress\U-2714\_EC\_PSH.dgn

REVISIONS