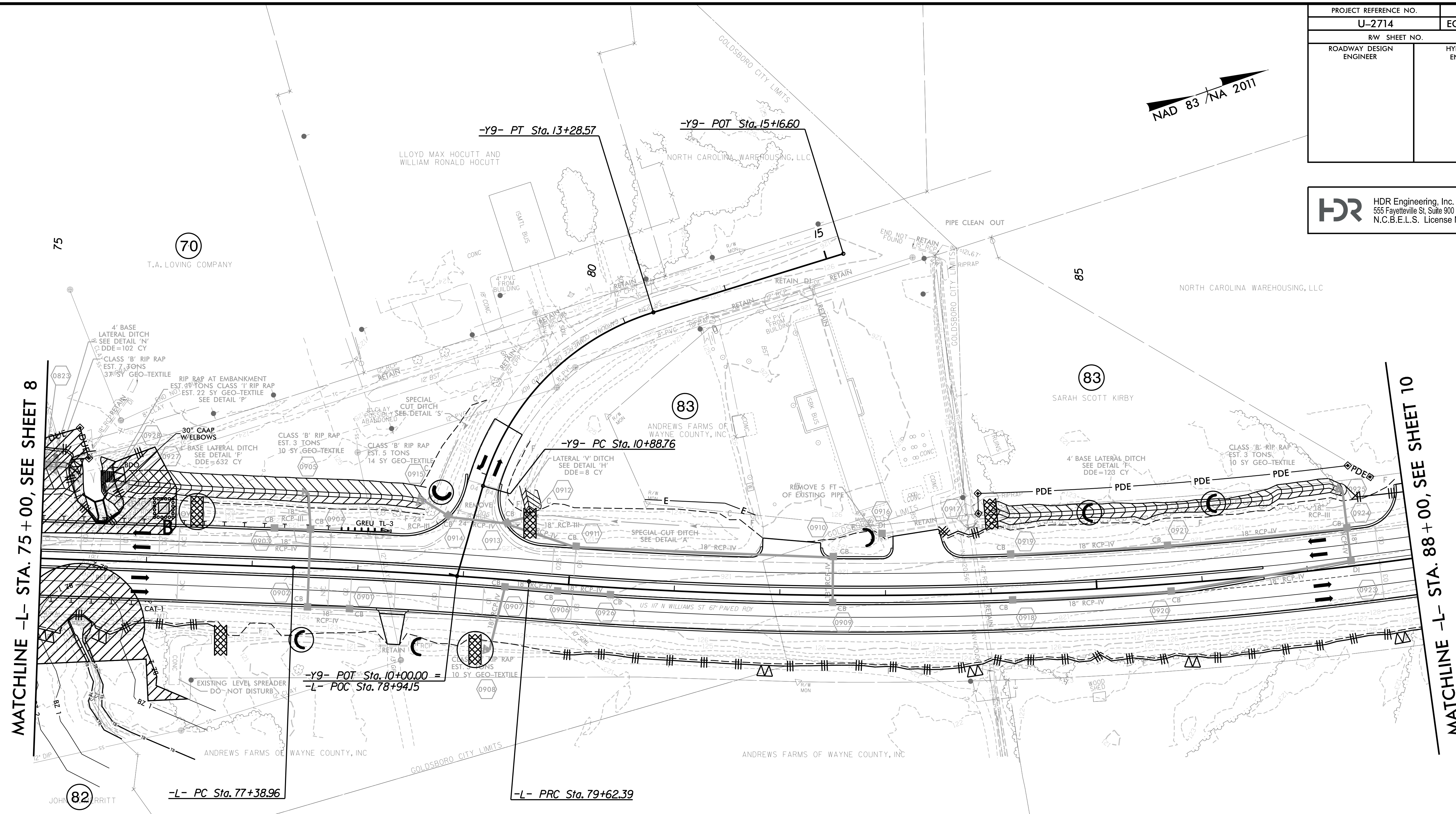
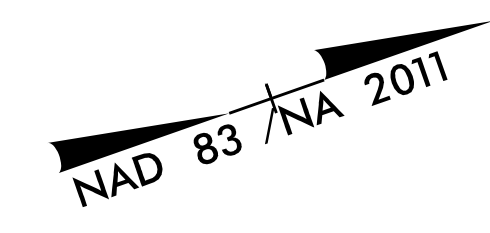


PROJECT REFERENCE NO.	SHEET NO.
U-2714	EC-9/CONST.9
RW SHEET NO.	RW-9
ROADWAY DESIGN ENGINEER	HYDRAULICS ENGINEER

HDR HDR Engineering, Inc. of the Carolinas
 555 Fayetteville St. Suite 900 Raleigh, N.C. 27601
 N.C.B.E.L.S. License Number: F-0116



MATCHLINE -L- STA. 75 + 00, SEE SHEET 8

MATCHLINE -L- STA. 88 + 00, SEE SHEET 10

ENVIRONMENTALLY SENSITIVE AREA
SEE PROJECT SPECIAL PROVISIONS

UTILIZE FABRIC INSERT INLET PROTECTION (HIGH FLOW) IN LIEU OF ROCK INLET SEDIMENT TRAP TYPE C AS DIRECTED

CLEARING AND GRUBBING EROSION CONTROL FOR CONSTRUCTION SHEET 9

NOTE:
PLACE TEMPORARY ROCK SEDIMENT DAMS TYPE - B AND TEMPORARY ROCK SILT CHECKS TYPE - A AT DRAINAGE OUTLETS.

NOTE:
PERIMETER EROSION CONTROL MEASURES SHALL BE INSTALLED DURING CLEARING AND GRUBBING PHASE.

SEE SHEET 14 FOR -L- PROFILE
 SEE SHEET 20 FOR -Y9- PROFILE
 SEE SHEET 2D-1 FOR DRAINAGE DITCH DETAILS
 DRIVEWAY RADII 10' UNLESS OTHERWISE NOTED

PLOT DRIVER: NCDOT_color_eng_50.plt
 USER: MDIEHL
 DATE: 12/10/2019
 TIME: 5:05:38 PM
 FILE: North_Carolina_Dept_of_Transportation\NCDOT_Infrastructure\U2714_US117.cad\BIM\6.2.Work_In_Progress\U2714.NCDOT_File_Structure\Erosion_Control\U2714_EC_PSH.dgn

REVISIONS