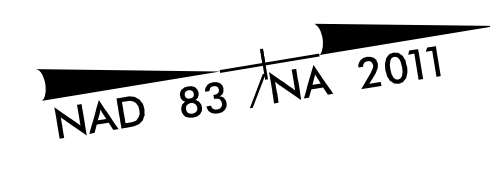


| | |
|-------------------------|---------------------|
| PROJECT REFERENCE NO. | SHEET NO. |
| U-2714 | EC-8/CONST.8 |
| R/W SHEET NO. | RW-8 |
| ROADWAY DESIGN ENGINEER | HYDRAULICS ENGINEER |

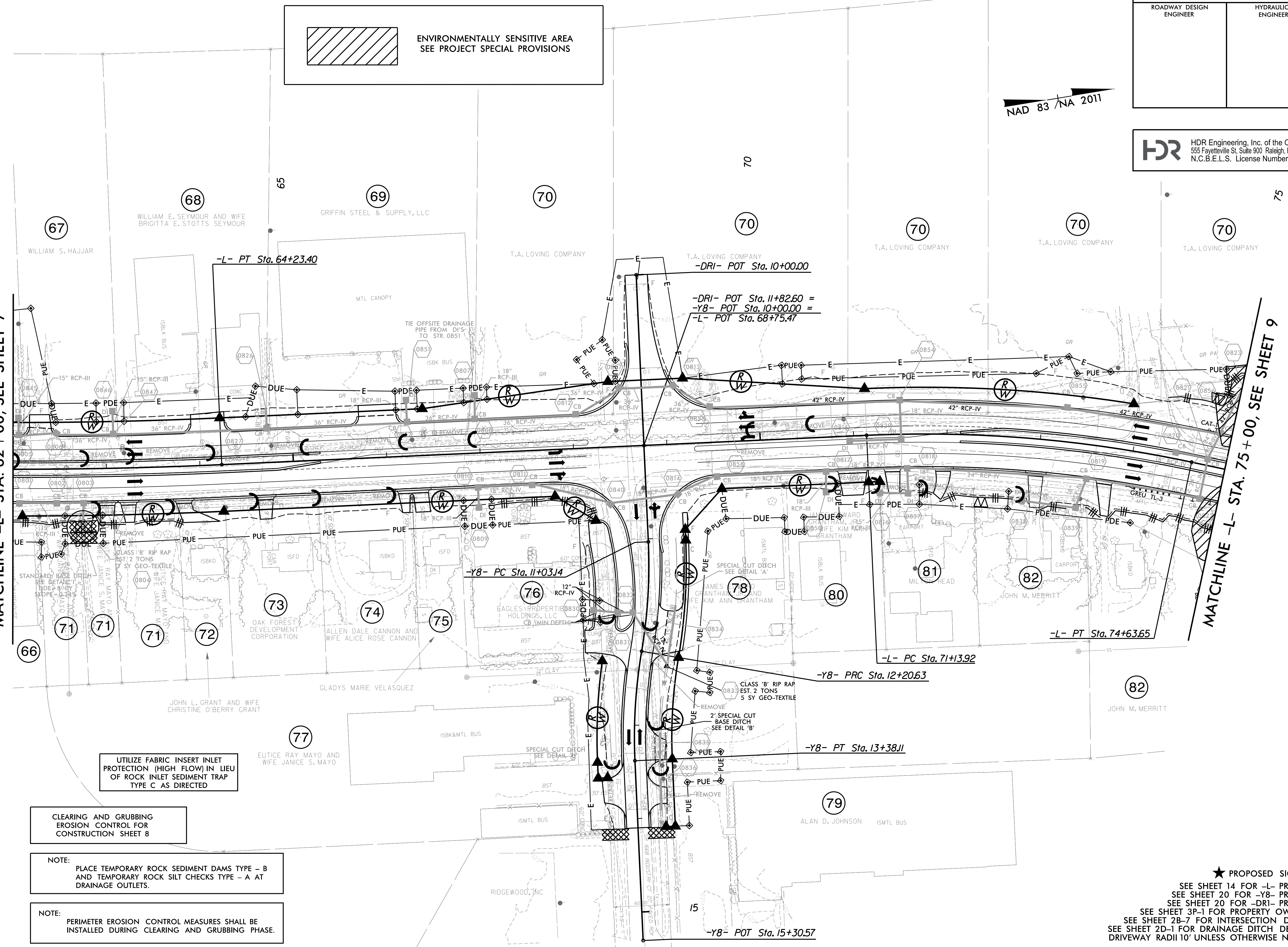
HDR HDR Engineering, Inc. of the Carolinas
 555 Fayetteville St. Suite 900 Raleigh, N.C. 27601
 N.C.B.E.L.S. License Number: F-0116



 ENVIRONMENTALLY SENSITIVE AREA
 SEE PROJECT SPECIAL PROVISIONS

MATCHLINE -L- STA. 62+00, SEE SHEET 7

MATCHLINE -L- STA. 75+00, SEE SHEET 9



CLEARING AND GRUBBING
 EROSION CONTROL FOR
 CONSTRUCTION SHEET 8

NOTE:
 PLACE TEMPORARY ROCK SEDIMENT DAMS TYPE - B
 AND TEMPORARY ROCK SILT CHECKS TYPE - A AT
 DRAINAGE OUTLETS.

NOTE:
 PERIMETER EROSION CONTROL MEASURES SHALL BE
 INSTALLED DURING CLEARING AND GRUBBING PHASE.

UTILIZE FABRIC INSERT INLET
 PROTECTION (HIGH FLOW) IN LIEU
 OF ROCK INLET SEDIMENT TRAP
 TYPE C AS DIRECTED

-DRI- POT Sta. 11+82.60 =
 -Y8- POT Sta. 10+00.00 =
 -L- POT Sta. 68+75.47

-Y8- PC Sta. 11+03.14

-L- PC Sta. 71+13.92

-Y8- PRC Sta. 12+20.63

-Y8- PT Sta. 13+38.11

-L- PT Sta. 74+63.65

-Y8- POT Sta. 15+30.57

PLOT DRIVER: NCDOT_color_eng_50.plt
 USER: MDIEHL
 DATE: 12/10/2019
 TIME: 5:05:35 PM
 FILE: North_Carolina_Dept_of_Transportation\NCDOT\Western_Div\Or-Coll\M_NCDOT-U2714_US117.cad\BIM\6.2_Work_In_Progress\U-2714_EC_PSH.dgn

REVISIONS

★ PROPOSED SIGNAL
 SEE SHEET 14 FOR -L- PROFILE
 SEE SHEET 20 FOR -Y8- PROFILE
 SEE SHEET 20 FOR -DRI- PROFILE
 SEE SHEET 3P-1 FOR PROPERTY OWNERS
 SEE SHEET 2B-7 FOR INTERSECTION DETAIL
 SEE SHEET 2D-1 FOR DRAINAGE DITCH DETAILS
 DRIVEWAY RADII 10' UNLESS OTHERWISE NOTED