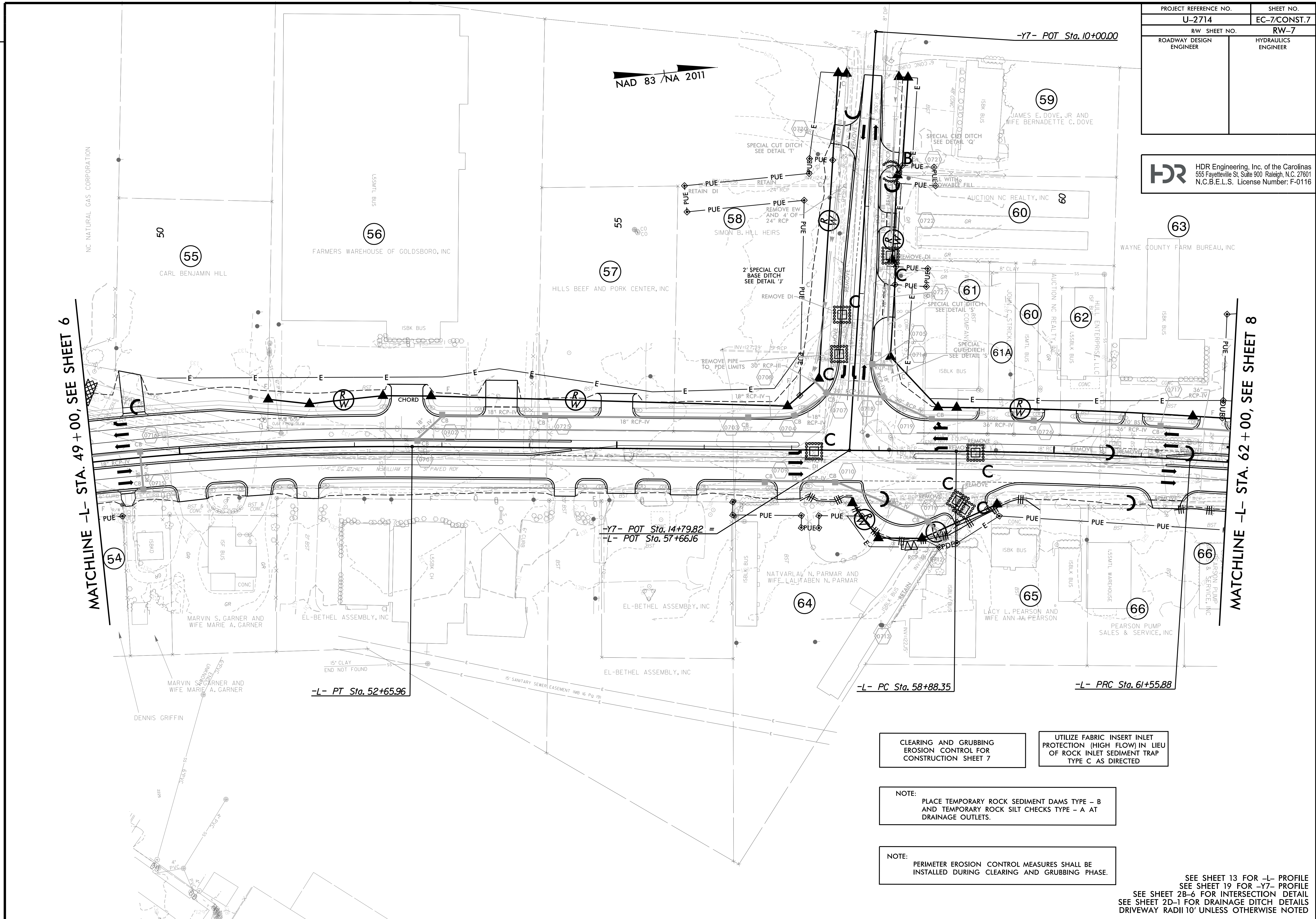


PLOT DRIVER: NCDOT_color_eng_50.plt
 USER: MDIEHL
 DATE: 12/10/2019
 PENTABLE: NCDOT_EC_C&G_BW.tbl
 TIME: 5:05:32 PM
 FILE: North_Carolina_Dept_of_Transportation\NCDOT_Western_Div_Or_Coll_M_NCDOT-U2714_US117.cad_CAD_BIM.v6.2_Work_In_Progress\U-2714_NCDOT_File_Structure\Erosion_Control\U2714_EC_PSH.dgn

REVISIONS

PROJECT REFERENCE NO.	SHEET NO.
U-2714	EC-7/CONST.7
RW SHEET NO.	RW-7
ROADWAY DESIGN ENGINEER	HYDRAULICS ENGINEER

HDR HDR Engineering, Inc. of the Carolinas
 555 Fayetteville St. Suite 900 Raleigh, N.C. 27601
 N.C.B.E.L.S. License Number: F-0116



MATCHLINE -L- STA. 49 + 00, SEE SHEET 6

MATCHLINE -L- STA. 62 + 00, SEE SHEET 8

CLEARING AND GRUBBING
 EROSION CONTROL FOR
 CONSTRUCTION SHEET 7

UTILIZE FABRIC INSERT INLET
 PROTECTION (HIGH FLOW) IN LIEU
 OF ROCK INLET SEDIMENT TRAP
 TYPE C AS DIRECTED

NOTE:
 PLACE TEMPORARY ROCK SEDIMENT DAMS TYPE - B
 AND TEMPORARY ROCK SILT CHECKS TYPE - A AT
 DRAINAGE OUTLETS.

NOTE:
 PERIMETER EROSION CONTROL MEASURES SHALL BE
 INSTALLED DURING CLEARING AND GRUBBING PHASE.

SEE SHEET 13 FOR -L- PROFILE
 SEE SHEET 19 FOR -Y7- PROFILE
 SEE SHEET 2B-6 FOR INTERSECTION DETAIL
 SEE SHEET 2D-1 FOR DRAINAGE DITCH DETAILS
 DRIVEWAY RADII 10' UNLESS OTHERWISE NOTED