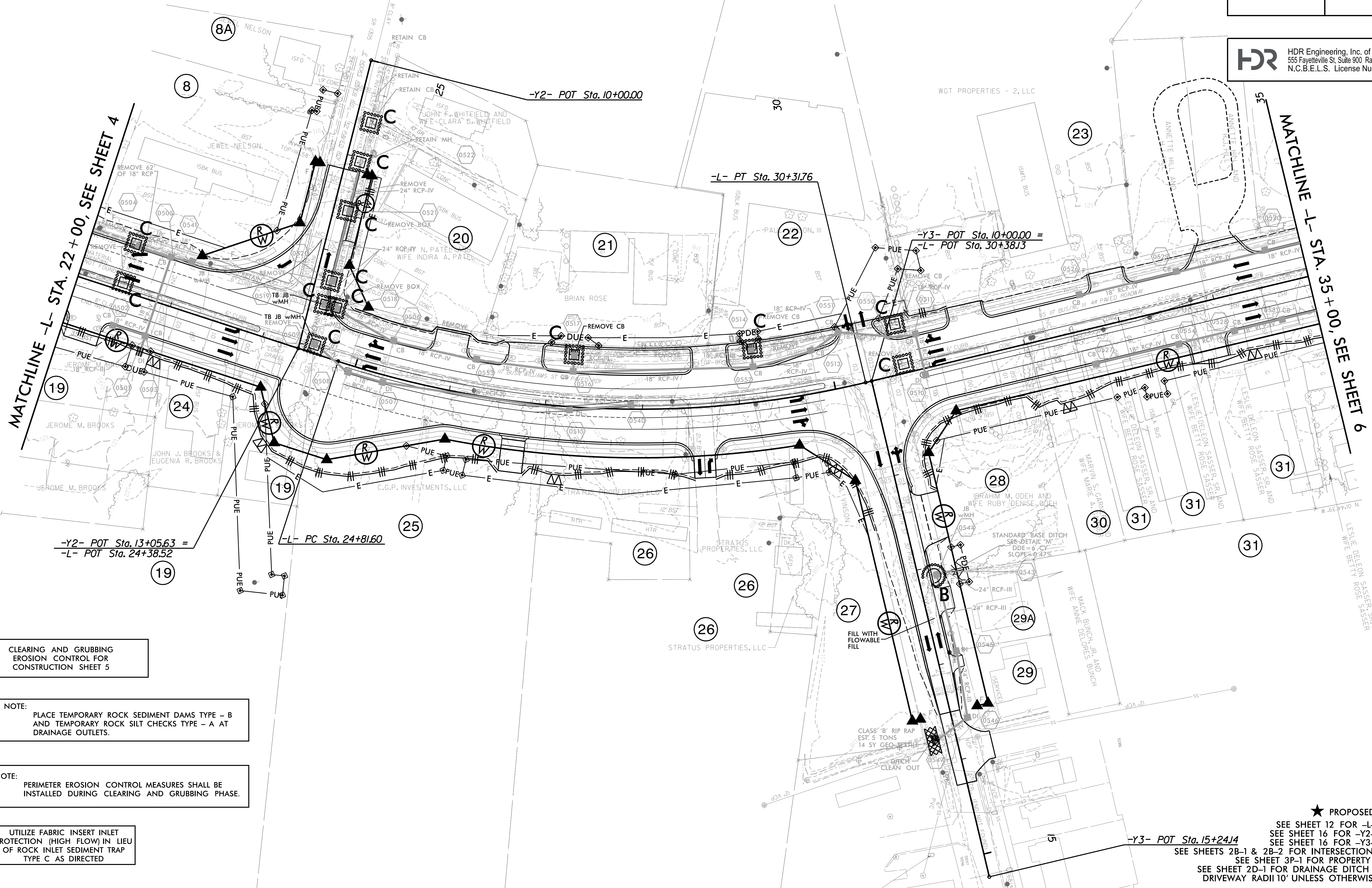


PROJECT REFERENCE NO.	SHEET NO.
U-2714	EC-5/CONST.5
RW SHEET NO.	RW-5
ROADWAY DESIGN ENGINEER	HYDRAULICS ENGINEER

HDR HDR Engineering, Inc. of the Carolinas
 555 Fayetteville St. Suite 900 Raleigh, N.C. 27601
 N.C.B.E.L.S. License Number: F-0116

NAD 83 / NA 2011



CLEARING AND GRUBBING
 EROSION CONTROL FOR
 CONSTRUCTION SHEET 5

NOTE:
 PLACE TEMPORARY ROCK SEDIMENT DAMS TYPE - B
 AND TEMPORARY ROCK SILT CHECKS TYPE - A AT
 DRAINAGE OUTLETS.

NOTE:
 PERIMETER EROSION CONTROL MEASURES SHALL BE
 INSTALLED DURING CLEARING AND GRUBBING PHASE.

UTILIZE FABRIC INSERT INLET
 PROTECTION (HIGH FLOW) IN LIEU
 OF ROCK INLET SEDIMENT TRAP
 TYPE C AS DIRECTED

★ PROPOSED SIGNAL
 SEE SHEET 12 FOR -L- PROFILE
 SEE SHEET 16 FOR -Y2- PROFILE
 SEE SHEET 16 FOR -Y3- PROFILE
 SEE SHEETS 2B-1 & 2B-2 FOR INTERSECTION DETAILS
 SEE SHEET 3P-1 FOR PROPERTY OWNERS
 SEE SHEET 2D-1 FOR DRAINAGE DITCH DETAILS
 DRIVEWAY RADII 10' UNLESS OTHERWISE NOTED

PLOT DRIVER: NCDOT_ec_color_eng_50.plt
 USER: MDIEHL
 DATE: 12/10/2019
 TIME: 5:05:26 PM
 FILE: North_Carolina_Dept_of_Transportation\NCDOT_Western_Div_Or-Coll_M_NCDOT-U2714_US117.cad_CAD_BIM_v6.2_Work_In_Progress\U-2714_EC_PSH.dgn

REVISIONS