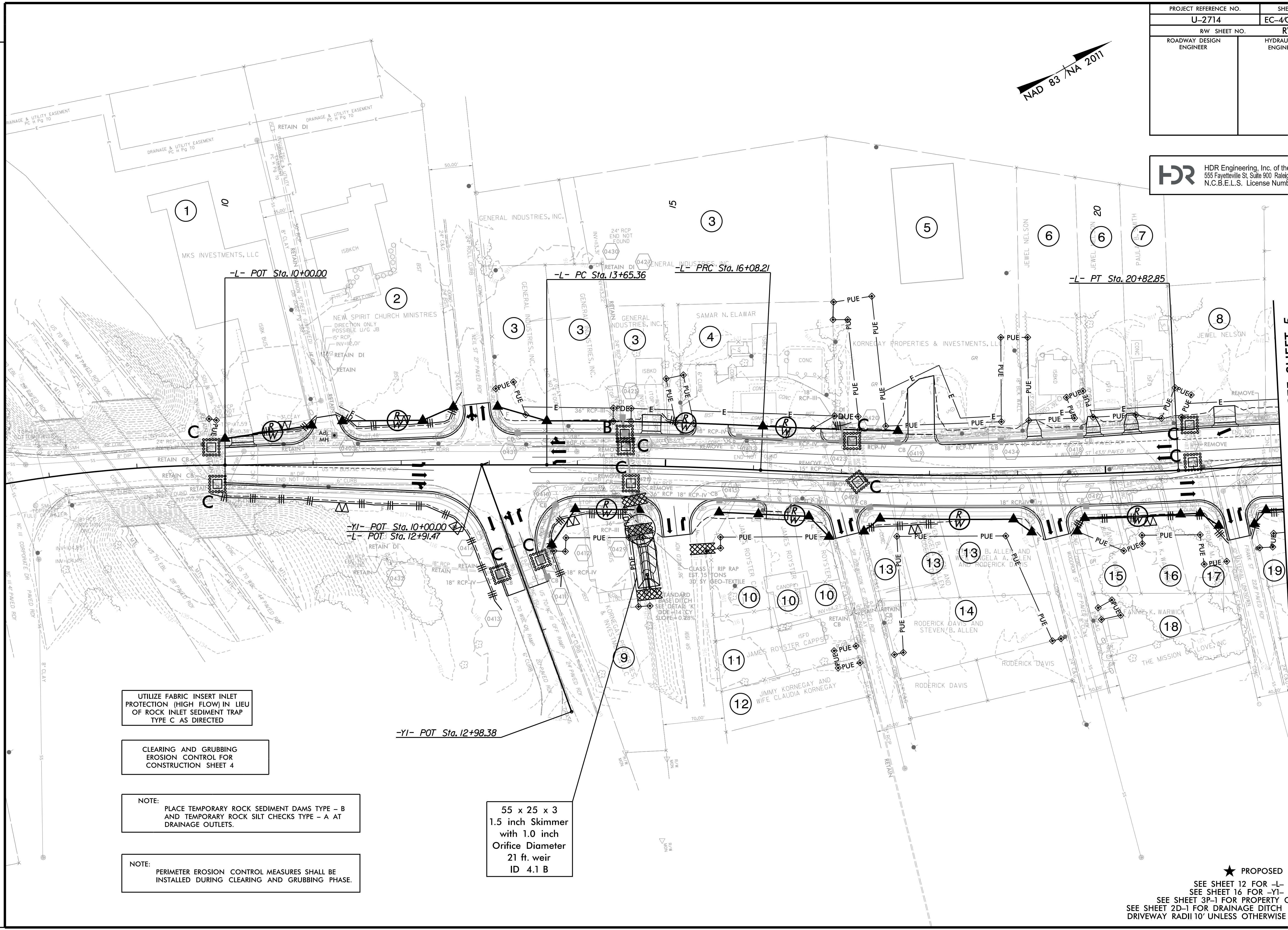
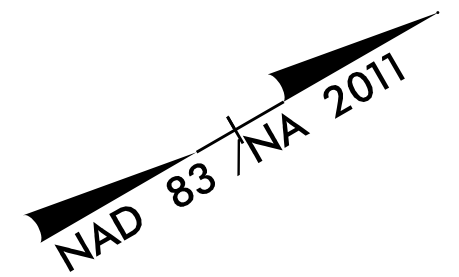


PROJECT REFERENCE NO.	SHEET NO.
U-2714	EC-4CONST.4
RW SHEET NO.	RW-4
ROADWAY DESIGN ENGINEER	HYDRAULICS ENGINEER

HDR HDR Engineering, Inc. of the Carolinas
 555 Fayetteville St. Suite 900 Raleigh, N.C. 27601
 N.C.B.E.L.S. License Number: F-0116



UTILIZE FABRIC INSERT INLET PROTECTION (HIGH FLOW) IN LIEU OF ROCK INLET SEDIMENT TRAP TYPE C AS DIRECTED

CLEARING AND GRUBBING EROSION CONTROL FOR CONSTRUCTION SHEET 4

NOTE:
 PLACE TEMPORARY ROCK SEDIMENT DAMS TYPE - B AND TEMPORARY ROCK SILT CHECKS TYPE - A AT DRAINAGE OUTLETS.

NOTE:
 PERIMETER EROSION CONTROL MEASURES SHALL BE INSTALLED DURING CLEARING AND GRUBBING PHASE.

55 x 25 x 3
 1.5 inch Skimmer
 with 1.0 inch
 Orifice Diameter
 21 ft. weir
 ID 4.1 B

MATCHLINE -L- STA. 22 + 00, SEE SHEET 5

★ PROPOSED SIGNAL
 SEE SHEET 12 FOR -L- PROFILE
 SEE SHEET 16 FOR -Y1- PROFILE
 SEE SHEET 3P-1 FOR PROPERTY OWNERS
 SEE SHEET 2D-1 FOR DRAINAGE DITCH DETAILS
 DRIVEWAY RADII 10' UNLESS OTHERWISE NOTED

PLOT DRIVER: NCDOT_color_eng_50.plt
 USER: MDIEHL
 DATE: 12/10/2019
 TIME: 5:05:23 PM
 FILE: North_Carolina_Dept_of_Transportation\NCDOT_Western_Div_Or-Coll_M_NCDOT-U2714_US117.cad_BIM.v6.2_Work_In_Progress\U-2714_EC_PSH.dgn

REVISIONS