

09/08/99

TIP PROJECT: U-2581BA

CONTRACT: C204371

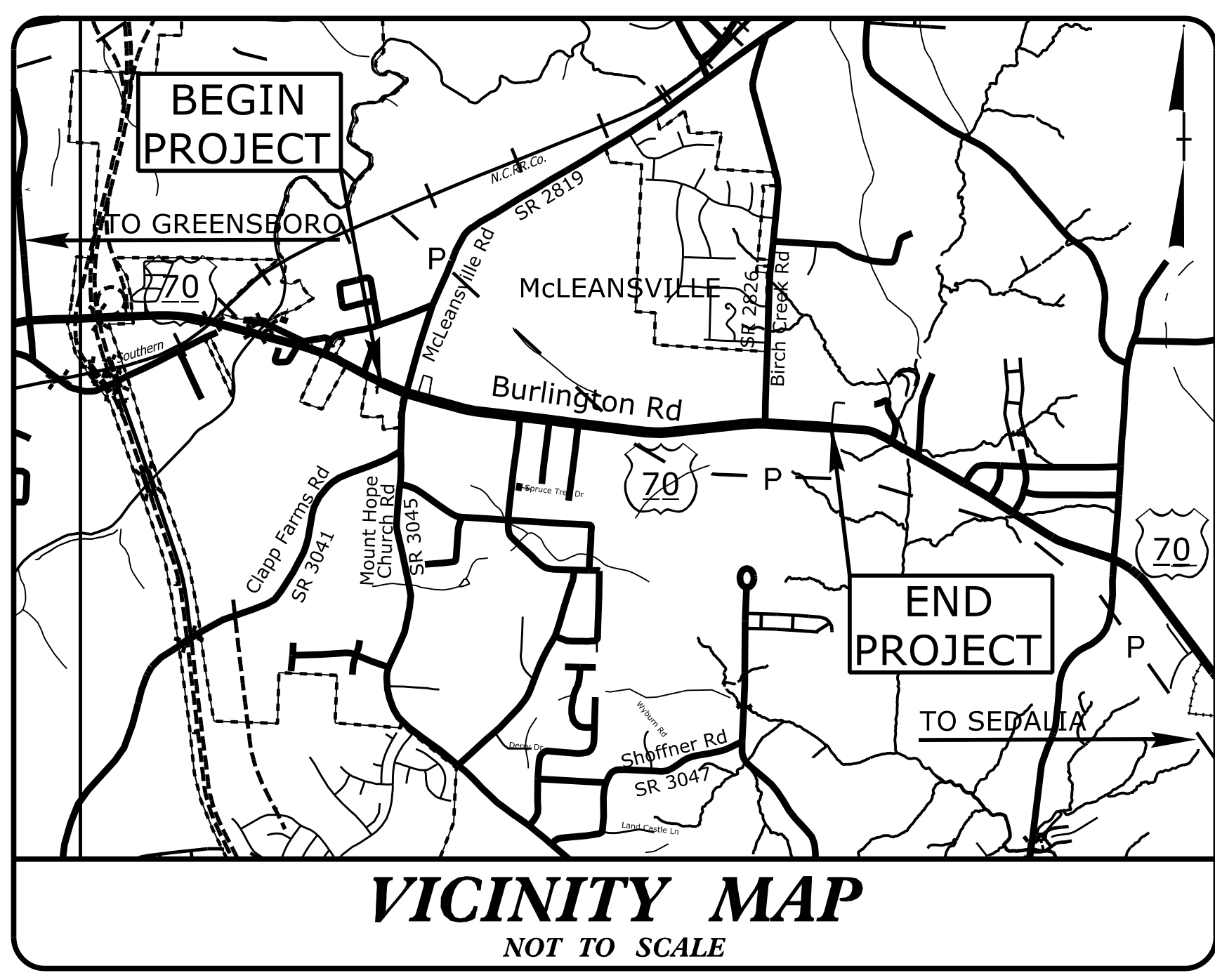
STATE OF NORTH CAROLINA DIVISION OF HIGHWAYS

T.I.P. NO.	SHEET NO.
U-2581BA	UO-1

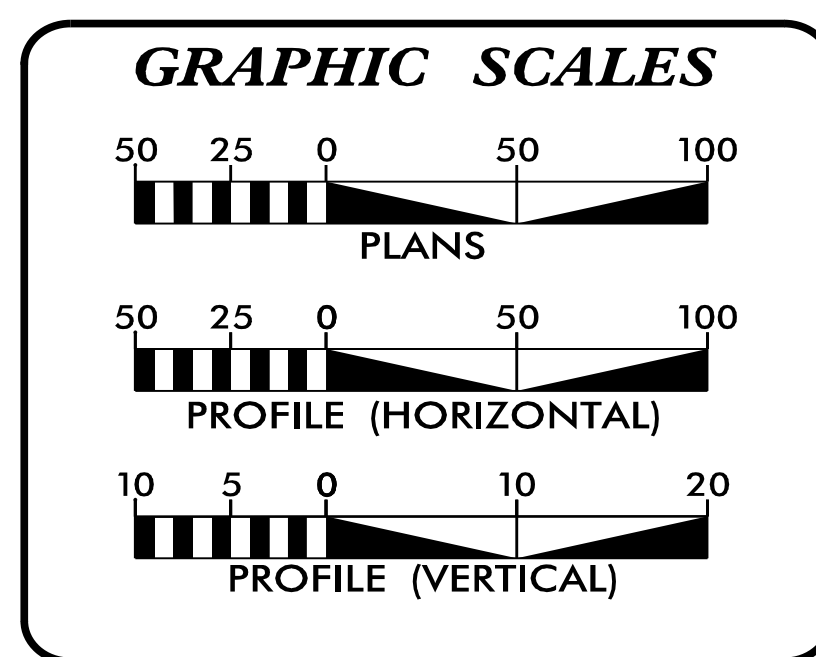
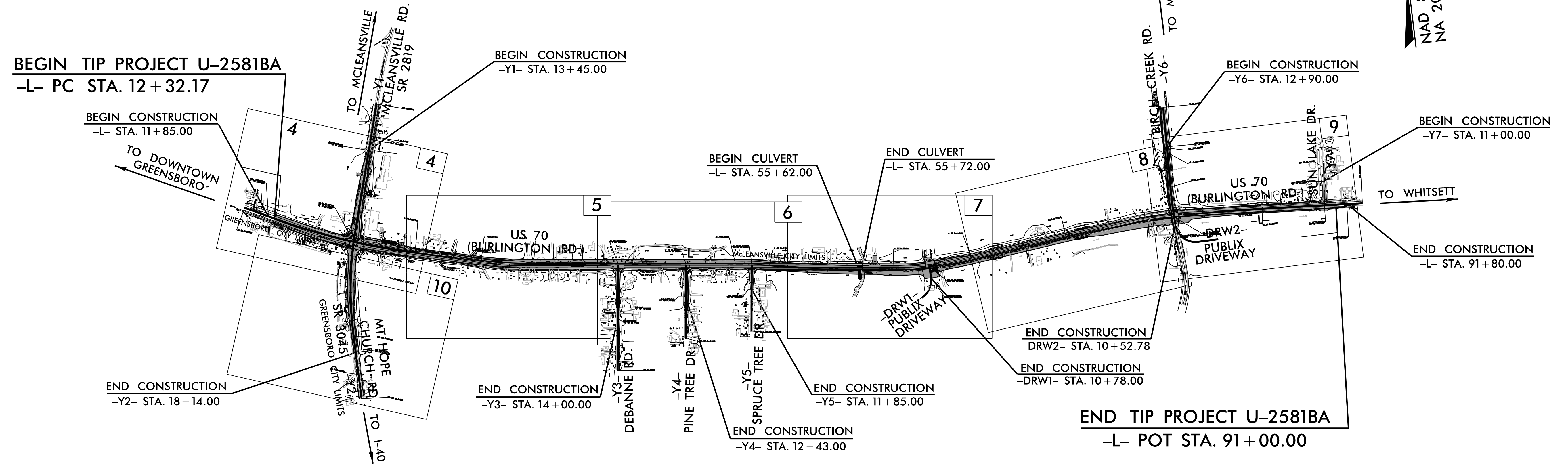
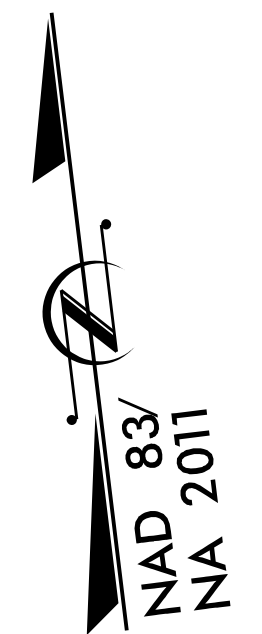
NOTE:
ALL UTILITY WORK SHOWN ON THIS SHEET WILL BE DONE BY OTHERS. NO PAYMENT WILL BE MADE TO THE CONTRACTOR FOR UTILITY WORK SHOWN ON THIS SHEET.

UTILITIES BY OTHERS PLANS GUILFORD COUNTY

LOCATION: US 70 (BURLINGTON ROAD) FROM WEST OF SR 3045 (MT. HOPE CHURCH ROAD) / SR 2819 (MCLEANSVILLE ROAD) TO JUST EAST OF SR 2826 (BIRCH CREEK ROAD)
TYPE OF WORK: POWER (DISTRIBUTION) COMMUNICATIONS



- ☆ EXISTING SIGNALS TO BE MODIFIED
- ★ PROPOSED SIGNAL



SHEET NO.:	DESCRIPTION:
UO-1	TITLE SHEET
UO-02 THRU UO-08	UBO PLAN SHEETS

- UTILITY OWNERS WITH CONFLICTS
- (A) POWER (DISTRIBUTION) - DUKE ENERGY
 - (B) COMMUNICATIONS - AT&T (TRANSMISSION)
 - (C) COMMUNICATIONS - AT&T (DISTRIBUTION)
 - (D) COMMUNICATIONS - SPECTRUM
 - (E) COMMUNICATIONS - CENTURYLINK
 - (F) COMMUNICATIONS - VERIZON

PREPARED IN THE OFFICE OF:

SO-DEEP | SAM NC

SO-DEEP | SAM NC, Inc.
A SAM COMPANY
2800-154 Sumner Boulevard, Raleigh, NC 27616 Tel 919-878-7466

Freddie Bum UTILITY PROJECT MANAGER
Chris Travis PROJECT UTILITY COORDINATOR

DIVISION OF HIGHWAYS
DIVISION 07
DIV ADDRESS
PO Box 14996
1584 Yanceyville Street
Greensboro, 27415-4996

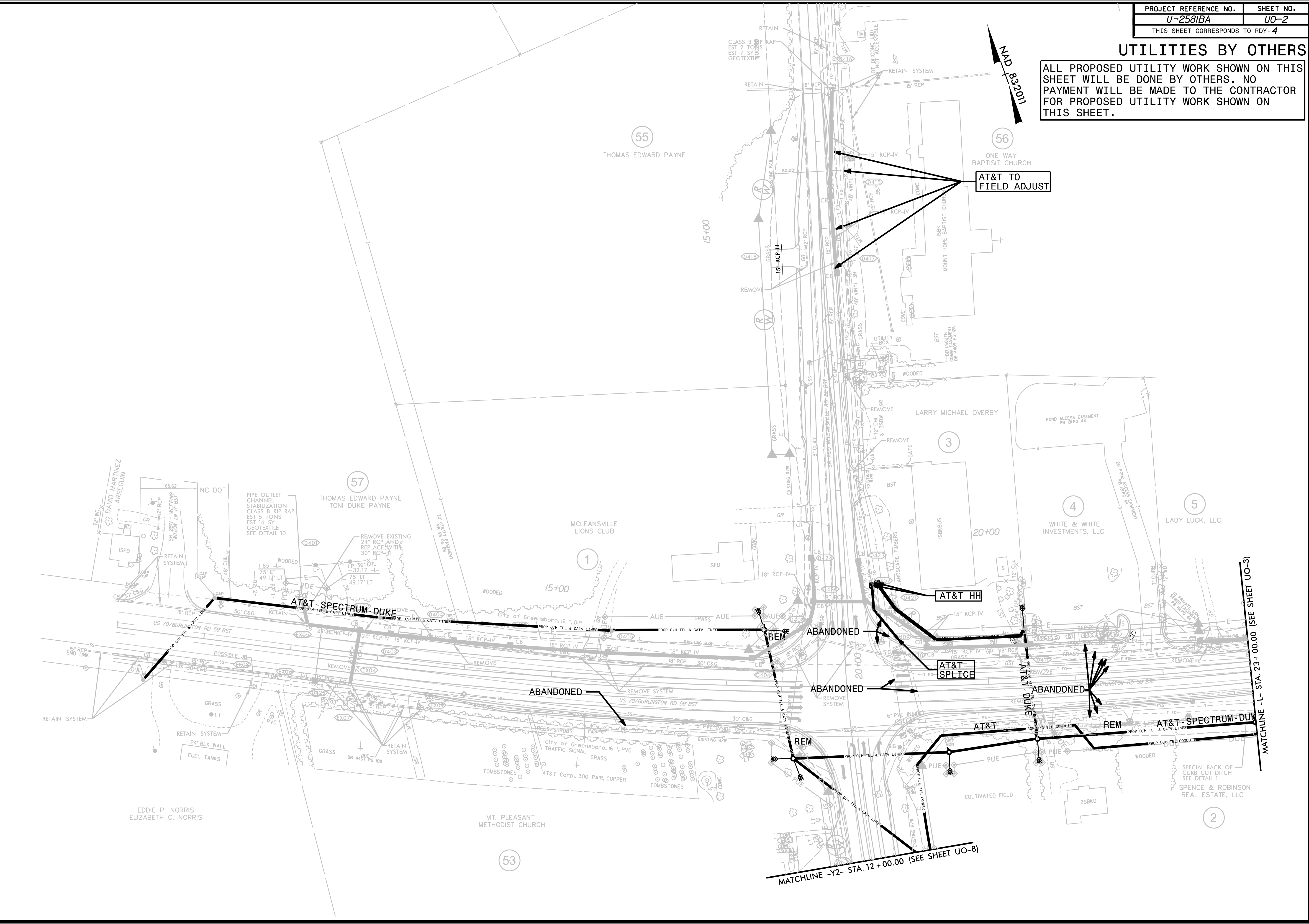
Don Langley DIVISION CONTACT #1
Alexander Foster DIVISION CONTACT #2
Bryan Key DIVISION CONTACT #3

\$\$\$\$\$ SYSTEM \$\$\$\$\$\$
\$\$\$\$\$ DDN \$\$\$\$\$\$
\$\$\$\$\$ USERNAME \$\$\$\$\$\$

UTILITIES BY OTHERS

ALL PROPOSED UTILITY WORK SHOWN ON THIS SHEET WILL BE DONE BY OTHERS. NO PAYMENT WILL BE MADE TO THE CONTRACTOR FOR PROPOSED UTILITY WORK SHOWN ON THIS SHEET.

5/14/99
 69
68
67
66
65
64
63
62
61
60
59
58
57
56
55
54
53
52
51
50
49
48
47
46
45
44
43
42
41
40
39
38
37
36
35
34
33
32
31
30
29
28
27
26
25
24
23
22
21
20
19
18
17
16
15
14
13
12
11
10
9
8
7
6
5
4
3
2
1



AT&T TO FIELD ADJUST

AT&T HH

AT&T SPLICER

ABANDONED

ABANDONED

ABANDONED

ABANDONED

MATCHLINE -Y2- STA. 12+00.00 (SEE SHEET UO-8)

MATCHLINE -L- STA. 23+00.00 (SEE SHEET UO-3)

55
THOMAS EDWARD PAYNE

56
ONE WAY BAPTIST CHURCH

57
THOMAS EDWARD PAYNE
TONI DUKE PAYNE

1
MCLEANSVILLE LIONS CLUB

3
LARRY MICHAEL OVERBY

4
WHITE & WHITE INVESTMENTS, LLC

5
LADY LUCK, LLC

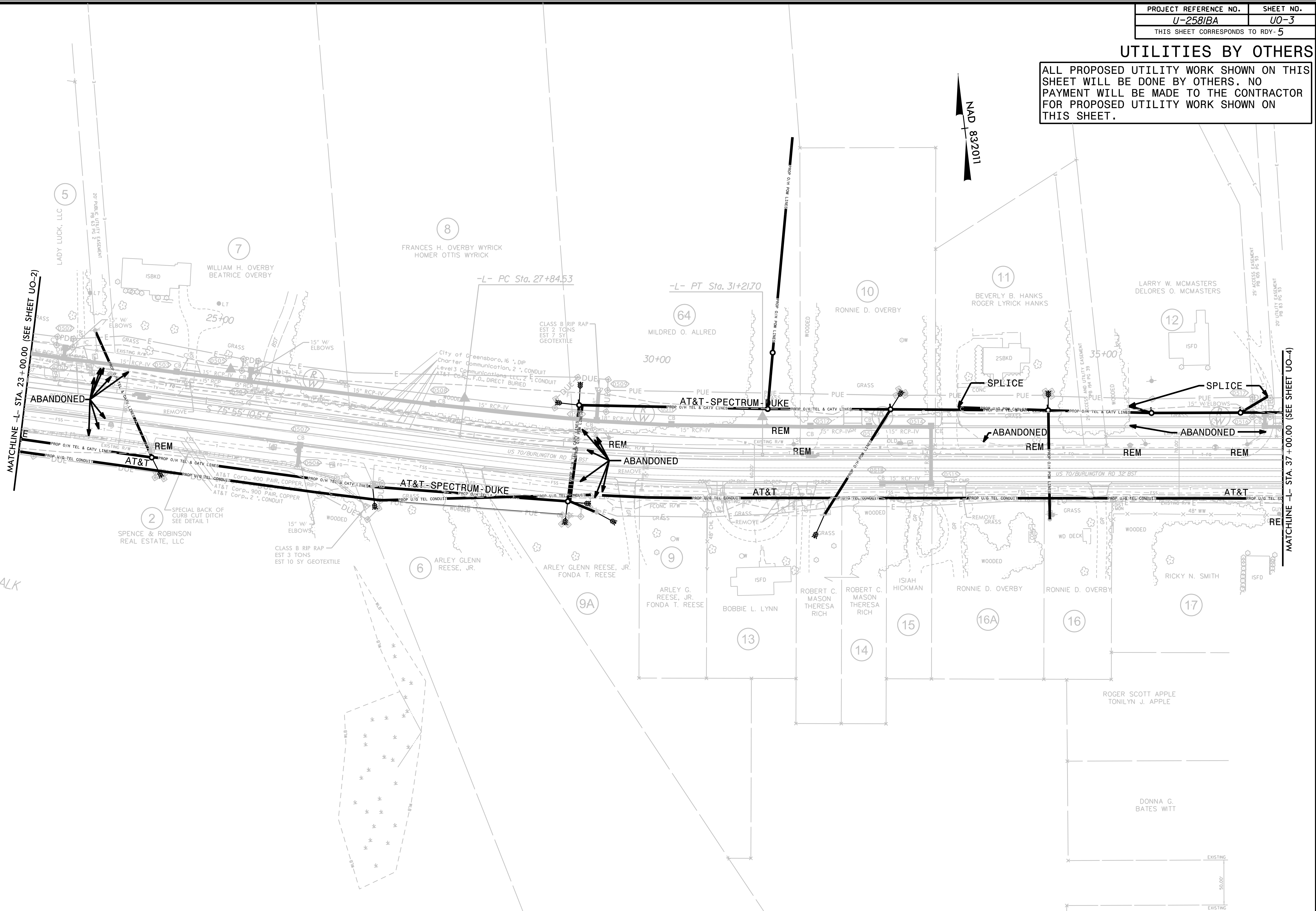
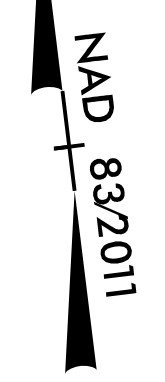
53
MT. PLEASANT METHODIST CHURCH

EDDIE P. NORRIS
ELIZABETH C. NORRIS

2
SPENCE & ROBINSON REAL ESTATE, LLC

UTILITIES BY OTHERS

ALL PROPOSED UTILITY WORK SHOWN ON THIS SHEET WILL BE DONE BY OTHERS. NO PAYMENT WILL BE MADE TO THE CONTRACTOR FOR PROPOSED UTILITY WORK SHOWN ON THIS SHEET.



REVISIONS

MATCHLINE -L- STA. 23+00.00 (SEE SHEET UO-2)

MATCHLINE -L- STA. 37+00.00 (SEE SHEET UO-4)

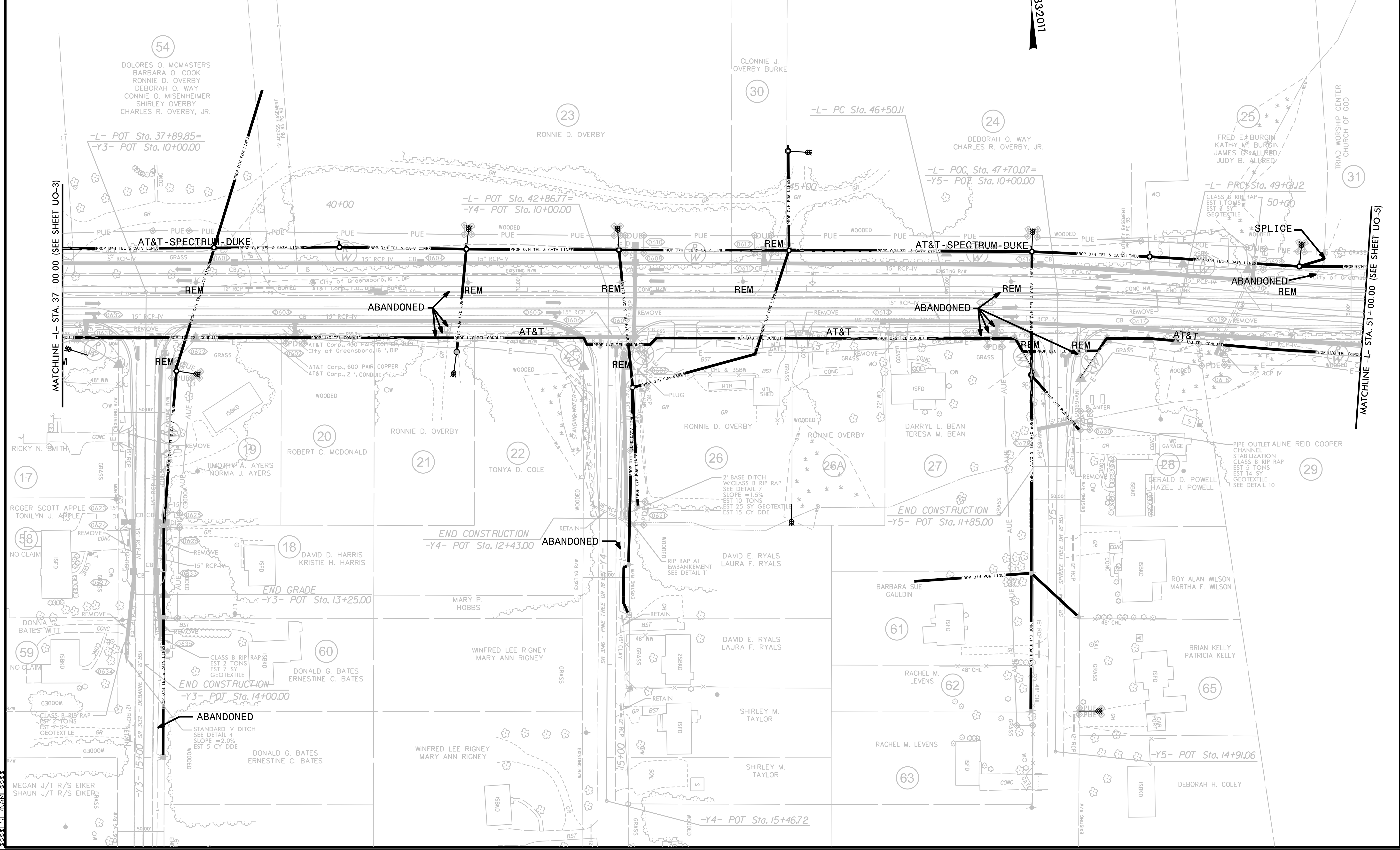
FOR -L- PROFILE SEE SHEET II

5/14/99
 1
 2
 3
 4
 5
 6
 7
 8
 9
 10
 11
 12
 13
 14
 15
 16
 17
 18
 19
 20
 21
 22
 23
 24
 25
 26
 27
 28
 29
 30
 31
 32
 33
 34
 35
 36
 37
 38
 39
 40
 41
 42
 43
 44
 45
 46
 47
 48
 49
 50
 51
 52
 53
 54
 55
 56
 57
 58
 59
 60
 61
 62
 63
 64
 65
 66
 67
 68
 69
 70
 71
 72
 73
 74
 75
 76
 77
 78
 79
 80
 81
 82
 83
 84
 85
 86
 87
 88
 89
 90
 91
 92
 93
 94
 95
 96
 97
 98
 99
 100

UTILITIES BY OTHERS

ALL PROPOSED UTILITY WORK SHOWN ON THIS SHEET WILL BE DONE BY OTHERS. NO PAYMENT WILL BE MADE TO THE CONTRACTOR FOR PROPOSED UTILITY WORK SHOWN ON THIS SHEET.

5/14/99



CONTRACTOR'S RESPONSIBILITY FOR VERIFYING THE LOCATION AND DEPTH OF ALL UTILITIES SHOWN ON THIS SHEET. THE CONTRACTOR SHALL BE RESPONSIBLE FOR OBTAINING ALL NECESSARY PERMITS AND FOR PROTECTING ALL UTILITIES NOT SHOWN ON THIS SHEET.

