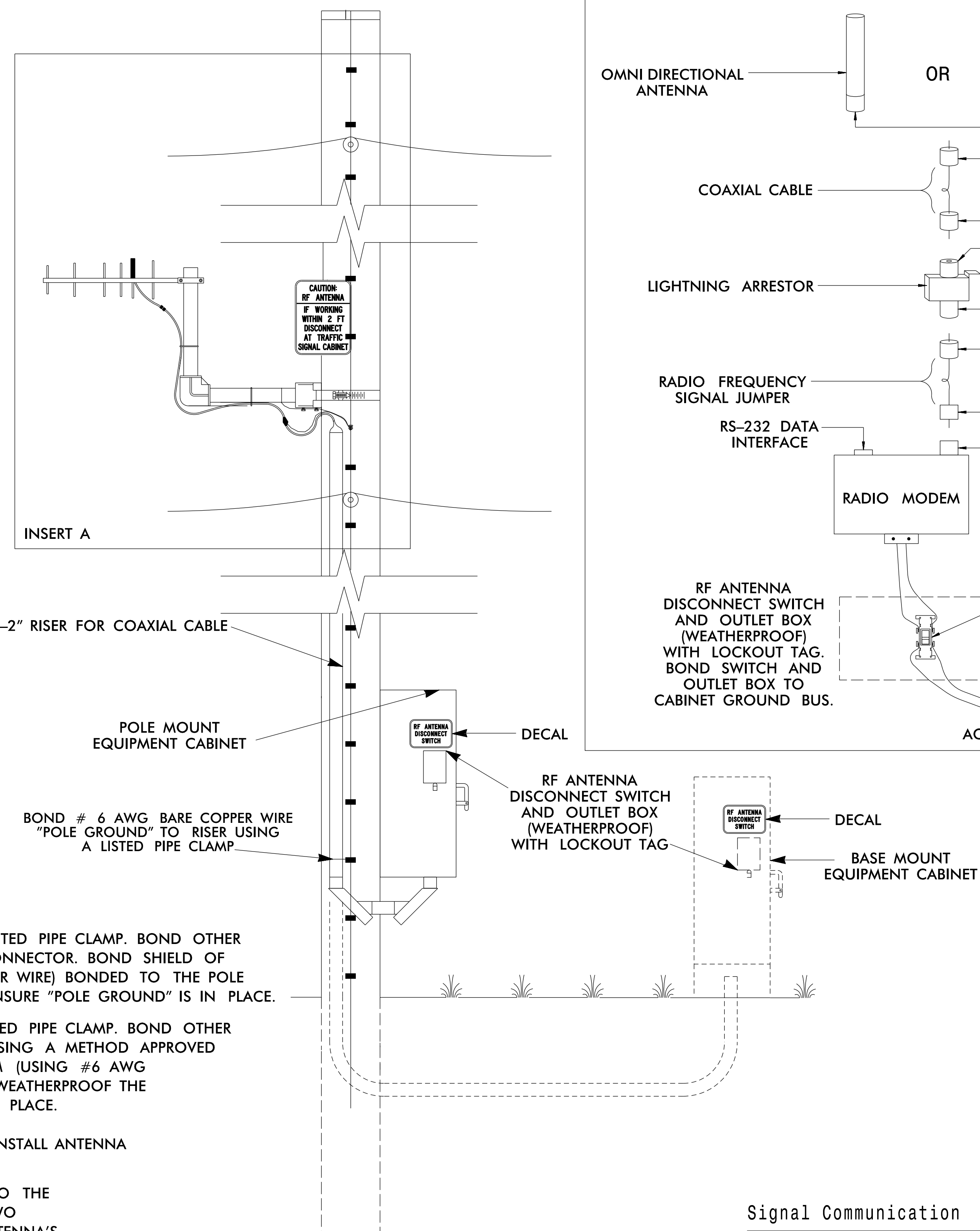


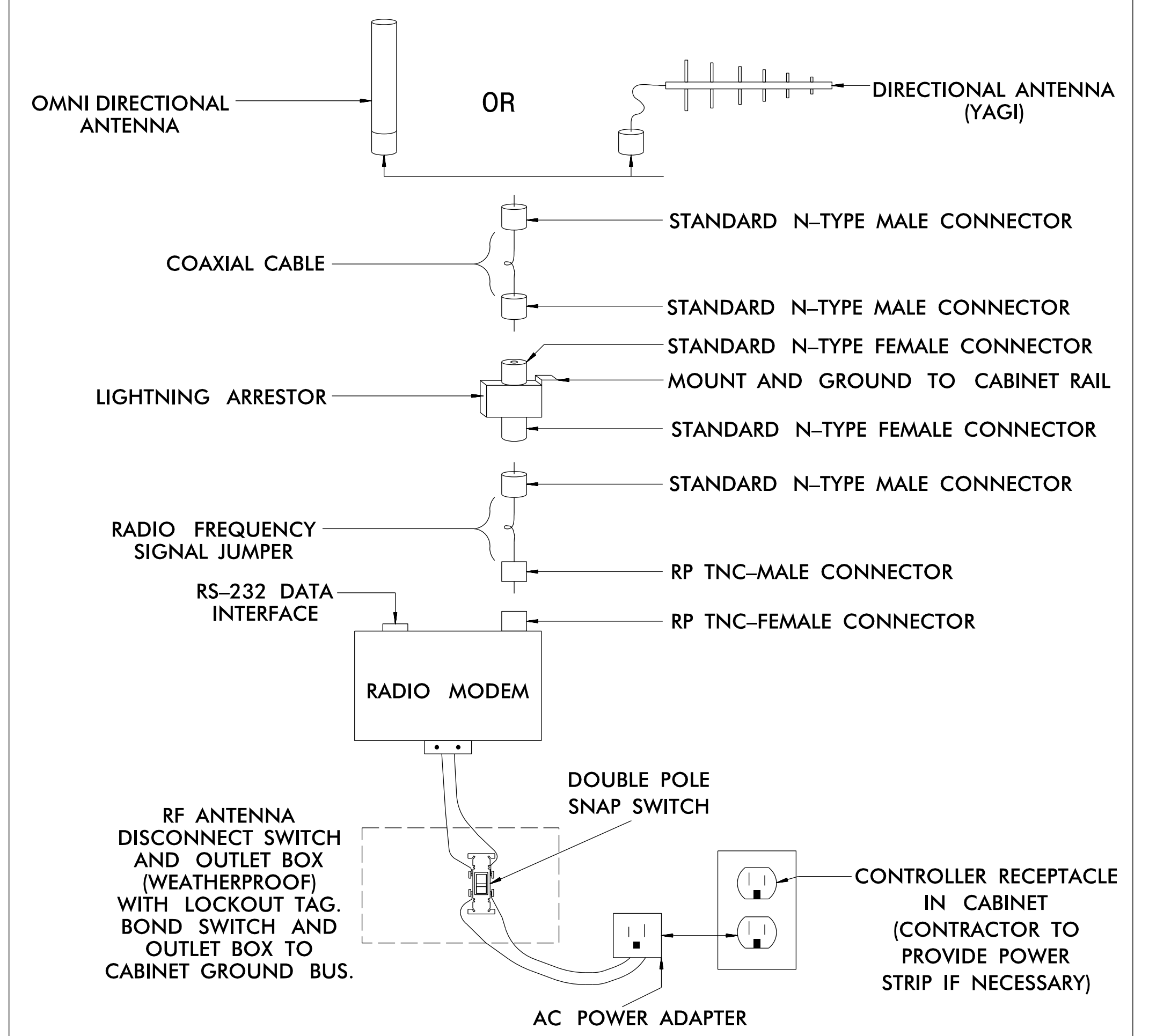
INSERT A

NOTES

- WOOD POLE — BOND # 6 AWG SOLID BARE COPPER WIRE TO ANTENNA SUPPORT USING LISTED PIPE CLAMP. BOND OTHER END OF # 6 AWG SOLID BARE COPPER WIRE TO THE POLE GROUND USING A SPLIT BOLT CONNECTOR. BOND SHIELD OF COAXIAL CABLE WITH AN APPROVED GROUNDING SYSTEM (USING #6 AWG STRANDED COPPER WIRE) BONDED TO THE POLE GROUND. WEATHERPROOF THE CONNECTION ONCE THE GROUNDING SYSTEM IS INSTALLED. ENSURE "POLE GROUND" IS IN PLACE.
 METAL POLE — BOND # 6 AWG SOLID BARE COPPER WIRE TO ANTENNA SUPPORT USING LISTED PIPE CLAMP. BOND OTHER END OF # 6 AWG SOLID BARE COPPER WIRE TO THE POLE OR EXISTING SYSTEM GROUND USING A METHOD APPROVED BY THE ENGINEER. BOND SHIELD OF COAXIAL CABLE WITH AN APPROVED GROUNDING SYSTEM (USING #6 AWG STRANDED COPPER WIRE) BONDED TO THE POLE BY A METHOD APPROVED BY THE ENGINEER. WEATHERPROOF THE CONNECTION ONCE THE GROUNDING SYSTEM IS INSTALLED. ENSURE "SYSTEM GROUND" IS IN PLACE.
- YAGI ANTENNA SHOWN IN VERTICAL POLARIZATION POSITION FOR CLARIFICATION. TYPICALLY INSTALL ANTENNA IN HORIZONTAL POLARIZATION POSITION.
- TO CONSERVE VERTICAL SPACING ON THE POLE (JOINT-USE OR SIGNAL POLE) WITH REGARDS TO THE SURROUNDING UTILITIES, INSTALL THE ANTENNA MOUNTING HARDWARE USING ONE OF THE TWO METHODS LISTED BELOW: (ENSURE THAT THE MOUNTING METHOD DOES NOT DEGRADE THE ANTENNA'S SIGNAL INTEGRITY)
 - ROTATE THE VERTICAL SUPPORT ARM 90 DEGREES SUCH THAT THE ANTENNA IS AT THE SAME HEIGHT AS THE HORIZONTAL SUPPORT ARM.
 - ELIMINATE THE VERTICAL SUPPORT ARM AND MOUNT THE ANTENNA TO THE HORIZONTAL SUPPORT ARM.
 - ANTENNA, ANTENNA SUPPORT ARM, AND SIGN TO MAINTAIN A 40" SEPARATION FROM NEUTRAL /POWER AND 12" FROM OTHER UTILITIES.
- INSTALL AN END CAP TO SEAL THE EXPOSED END OF THE MOUNTING PIPE.



ANTENNA AND COAXIAL CABLE CONNECTION SCHEMATIC



Signal Communication

Prepared for the Offices of: 750 N. Greenfield Pkwy, Garner, NC 27529	US 70 (Burlington Rd) Wireless Radio Antenna Typical Details		DOCUMENT NOT CONSIDERED FINAL UNLESS ALL SIGNATURES COMPLETED SEAL SEAL 033108 JIANXIN MA 9/9/2019
	Division 7 Guilford County Greensboro PLAN DATE: September 2019 REVIEWED BY: M. Stygles PREPARED BY: J. Ma REVIEWED BY:	REVISIONS INIT. DATE	