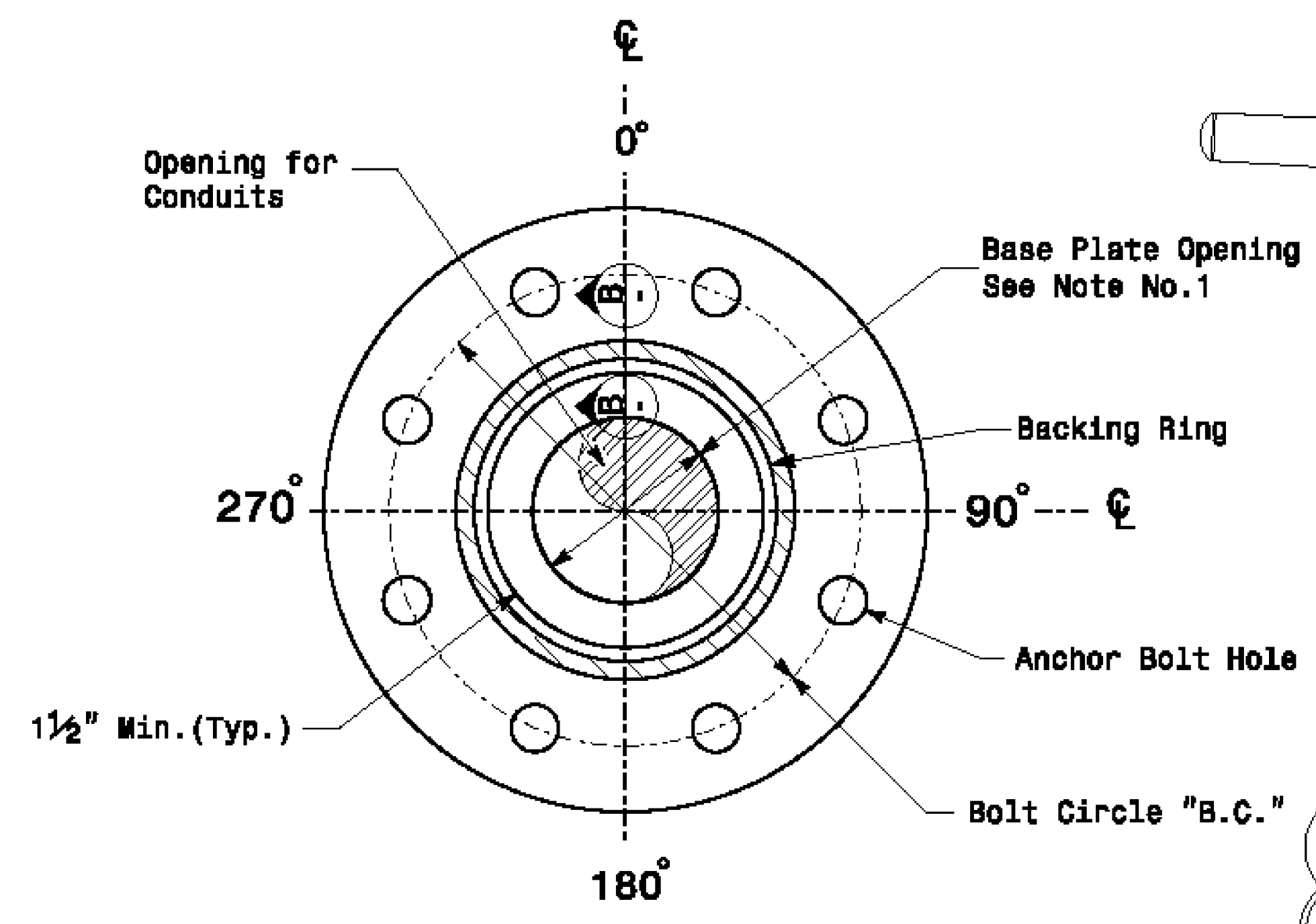
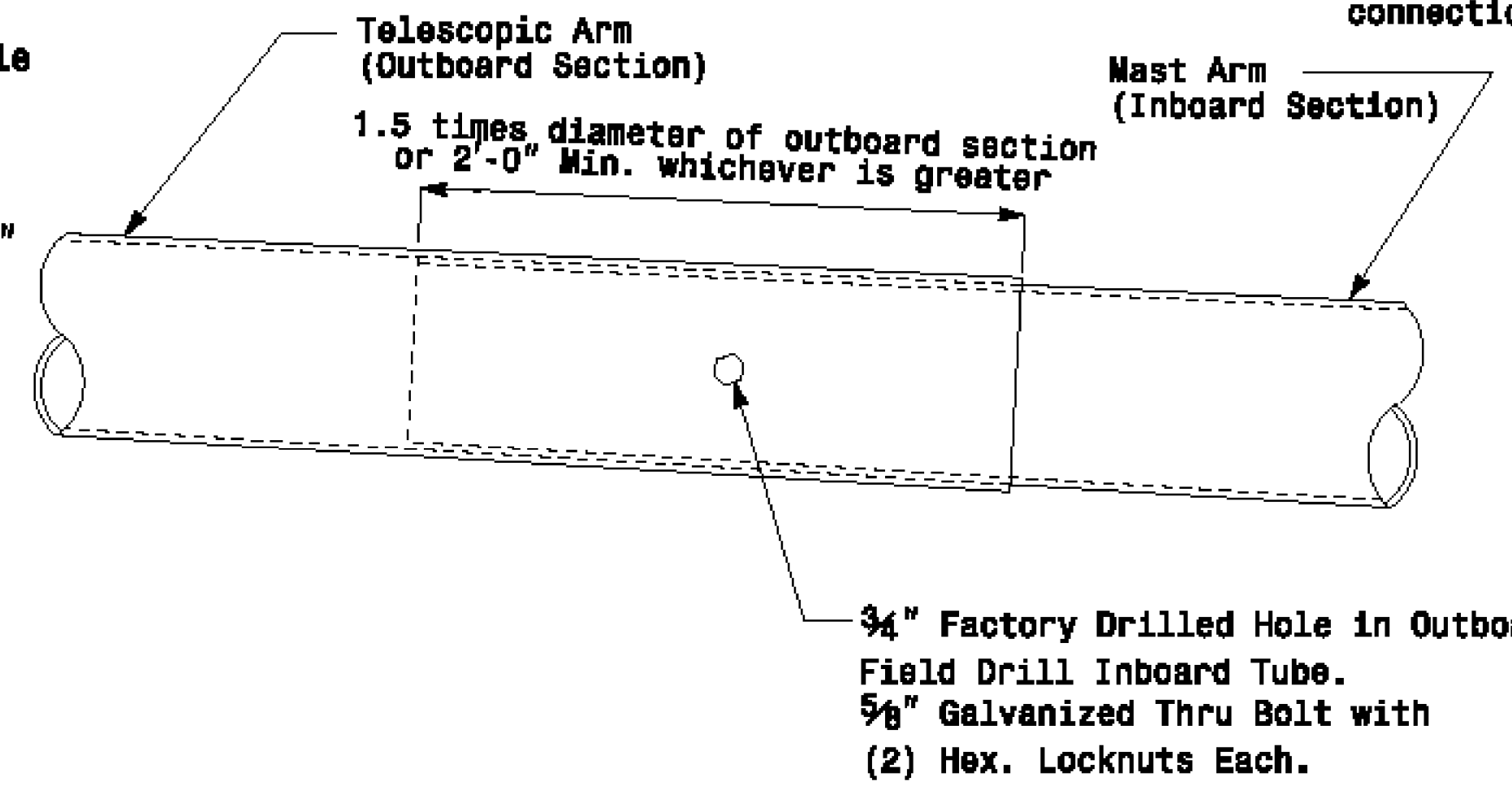
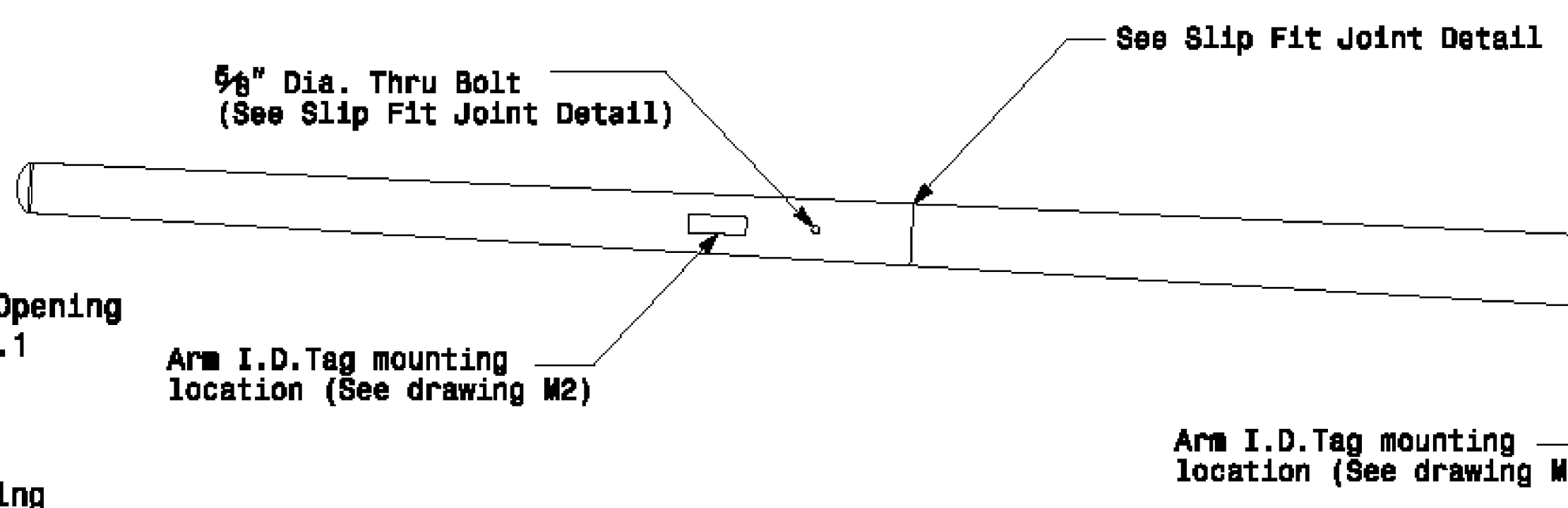


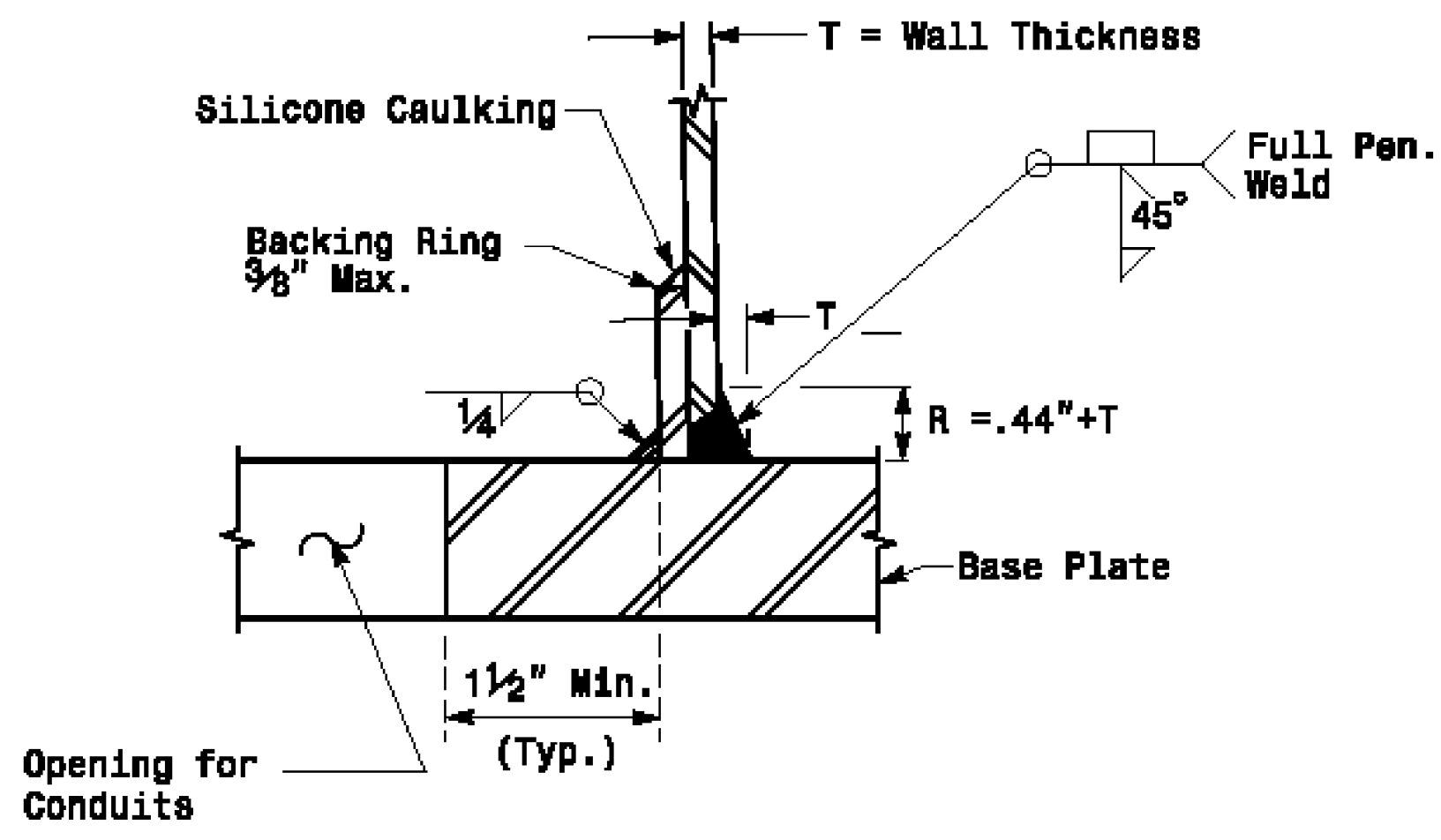
Note:
 1. Opening in pole base plate shall be equal to pole base inside diameter minus 3 1/2" but shall not be less than 8 1/2".



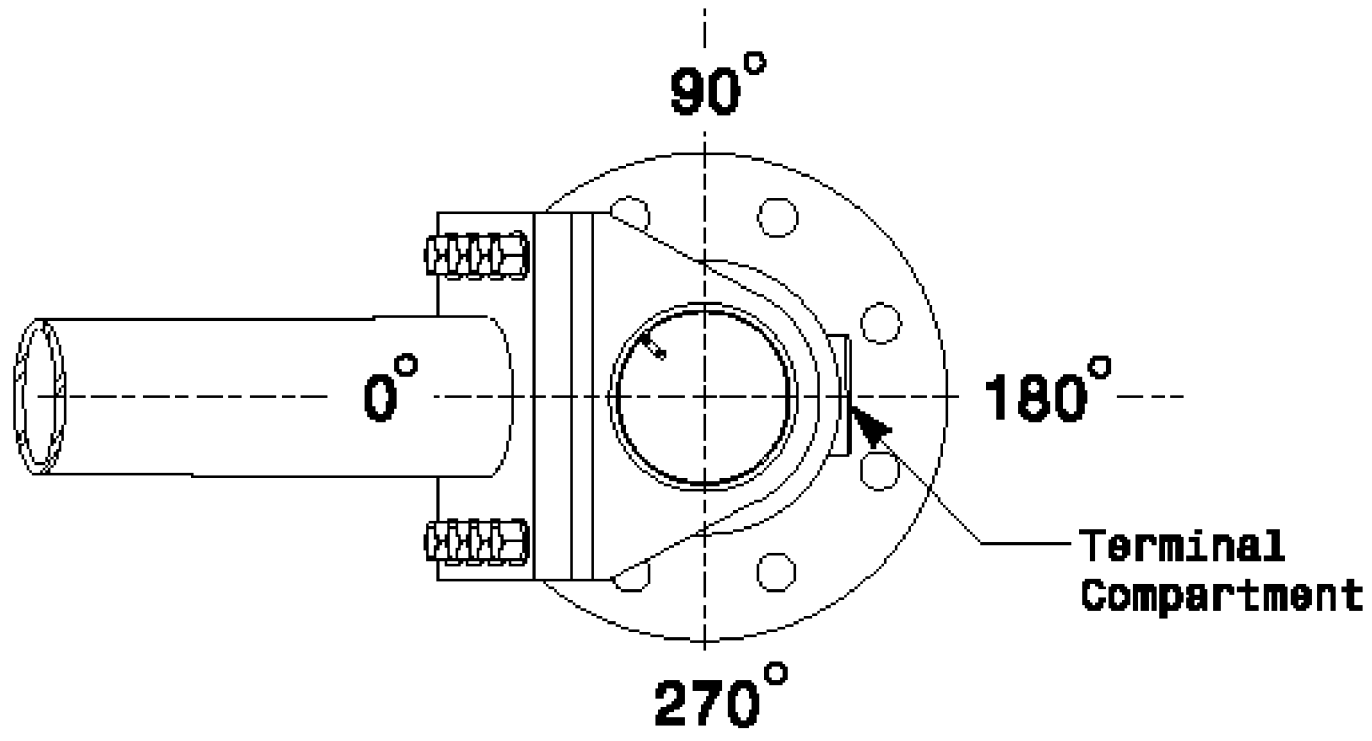
Section A-A
Pole Base Plate Details



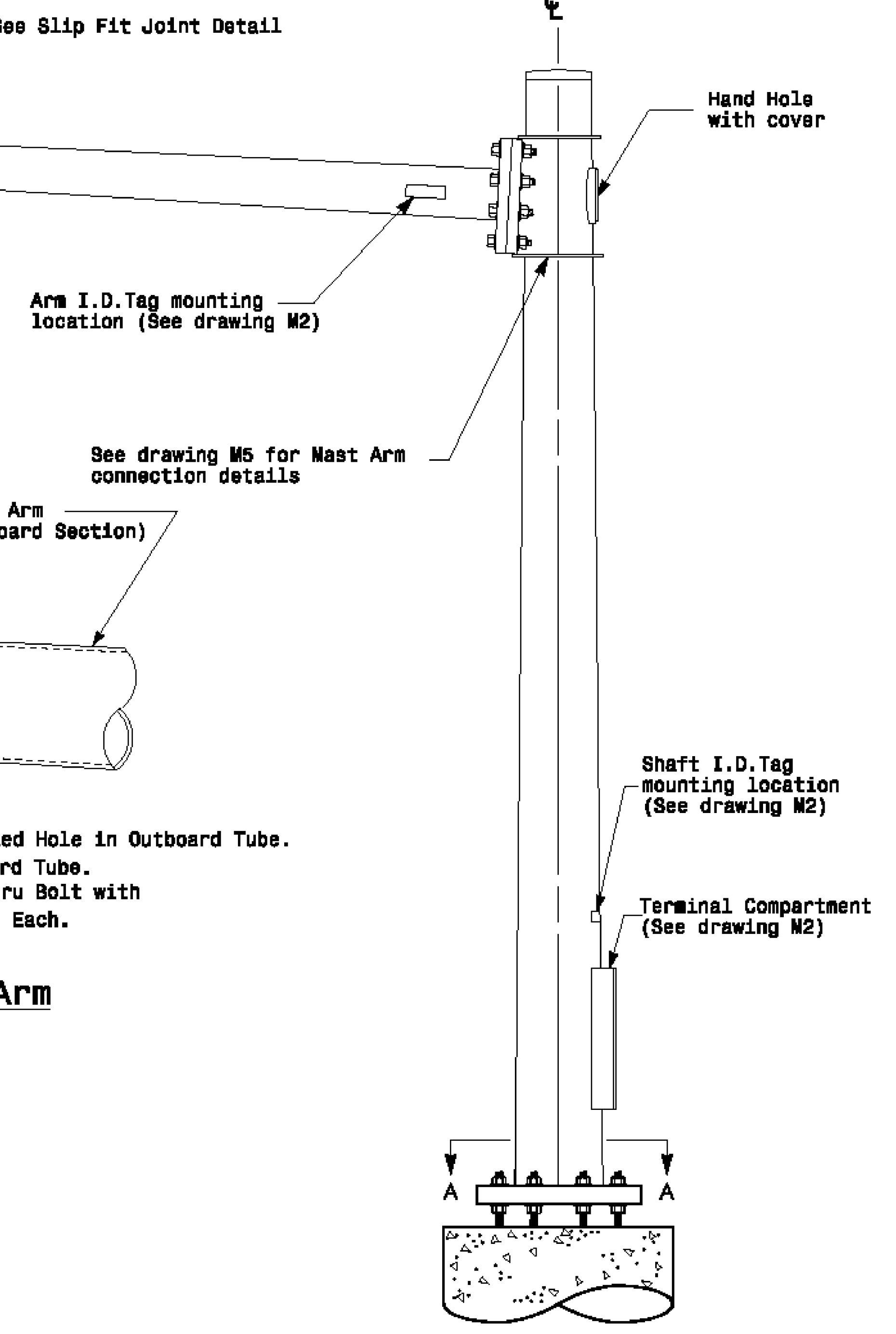
Slip Fit Joint Detail for Mast Arm



Section B-B
 (Pole Attachment to Base Plate)
Full-Penetration Groove Weld Detail




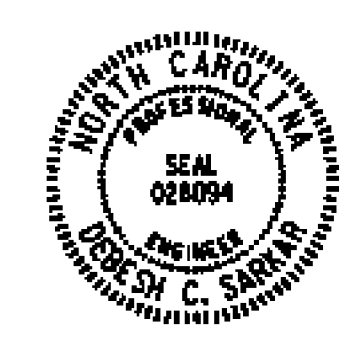
Mast Arm Radial Orientation



Mast Arm Pole

Fabrication Details - Mast Arm Poles

11-067-2017-0833
 5/4/18G0415 5100 15451001 Design Section Eastern Region\Sheet\2017\014 510_M4_Std. Fabrication Detail\Mast Arm Poles.dgn

 Prepared in the Office of: 730 N. Greenfield Pkwy, Cary, NC 27513	Typical Fabrication Details For Mast Arm Poles		SEAL  SEAL 028094 JOSEPH C. SARKAR ENGINEER
	PLAN DATE: OCTOBER 2017 DESIGNED BY: K.C. DURIGON PREPARED BY: N. BITTING REVISIONS:	REVIEWED BY: D.C. BARKAR INIT. DATE	
SCALE 0 NA NONE	DATE		