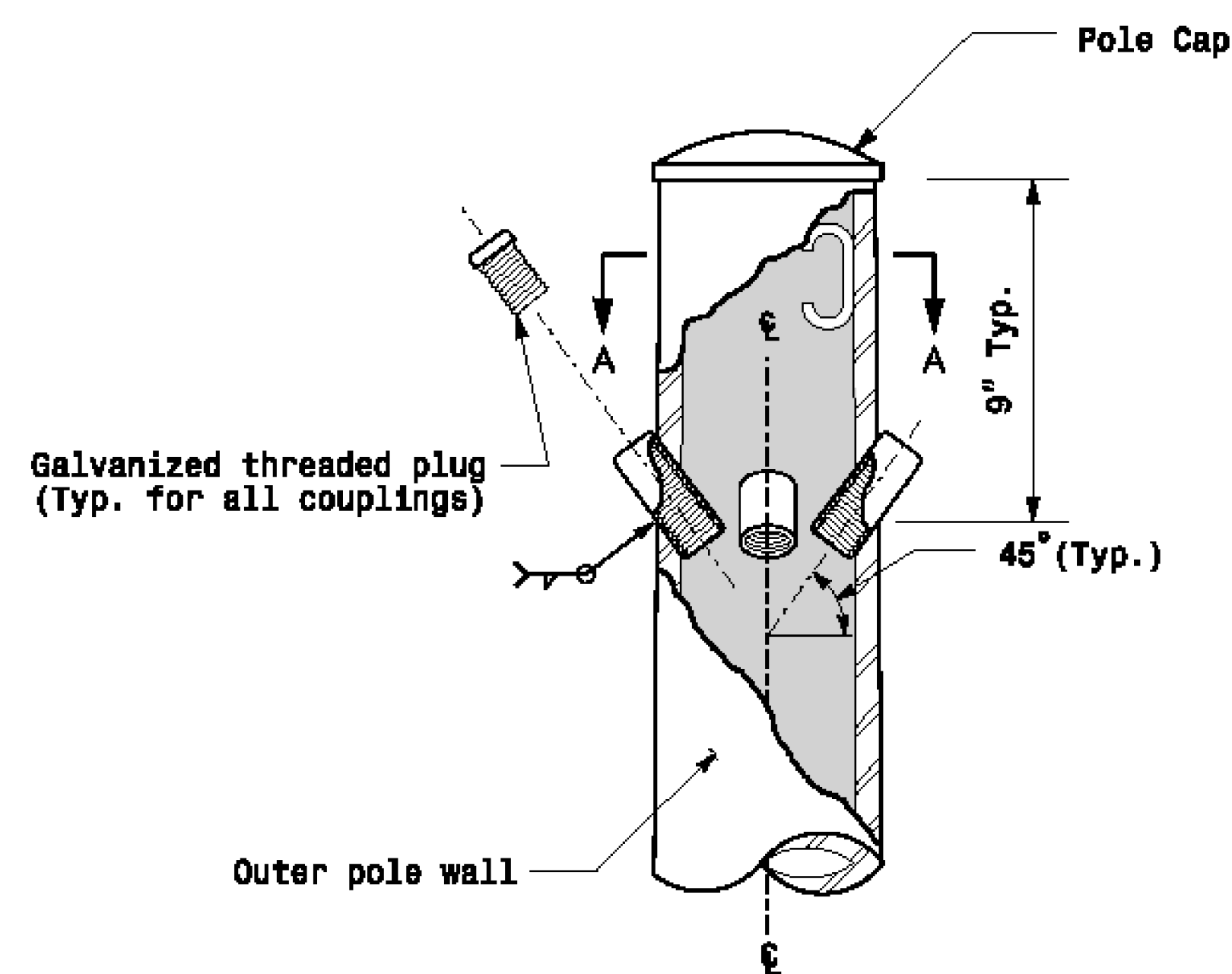
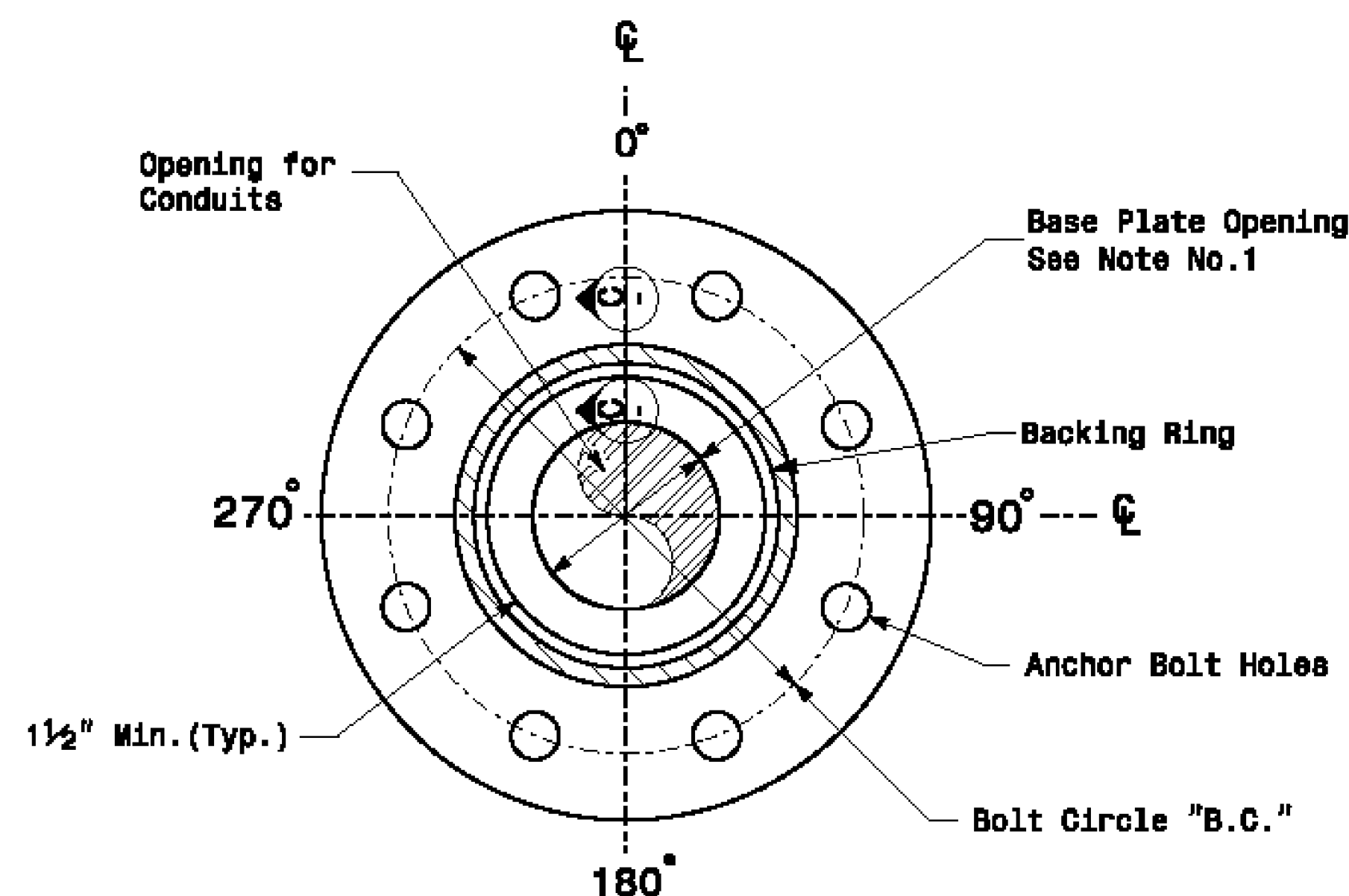


Note:  
1. Opening in pole base plate shall be equal to pole base inside diameter minus 3 1/2" but shall not be less than 8 1/2".

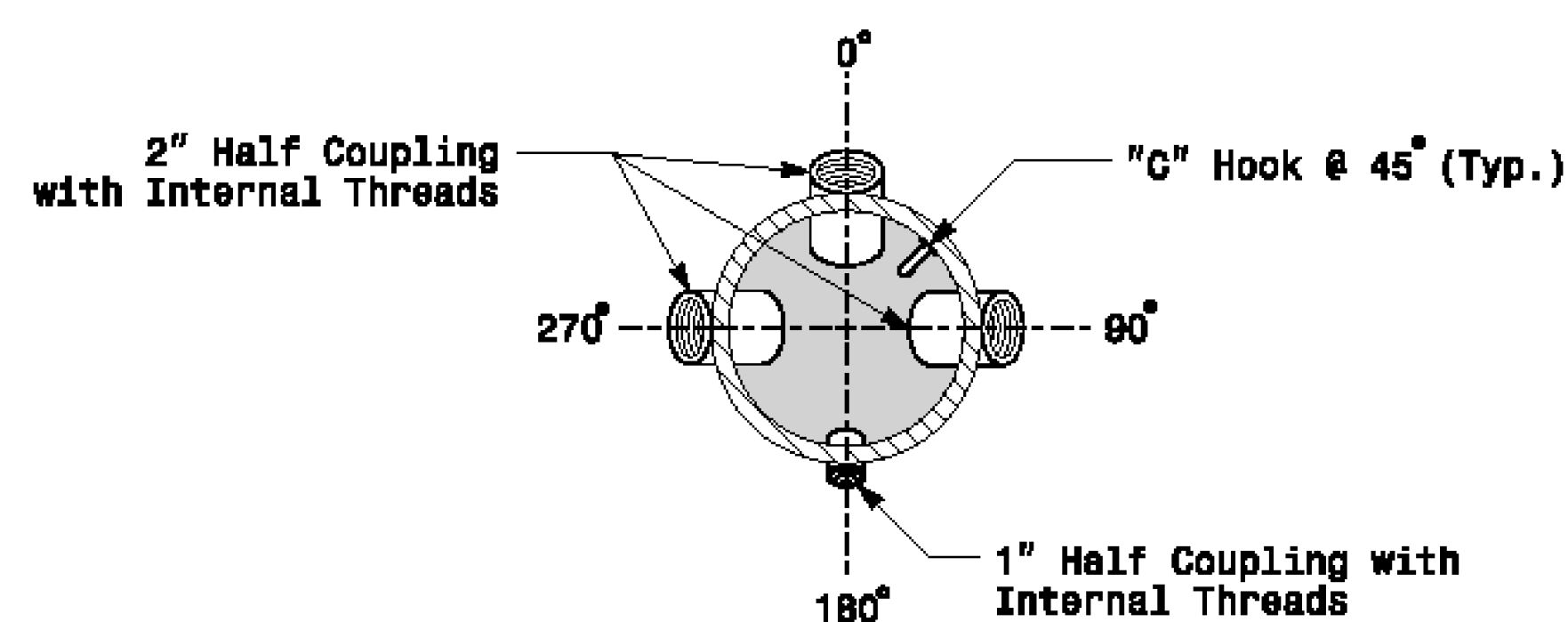


**Cable Entrances at Top of Pole**

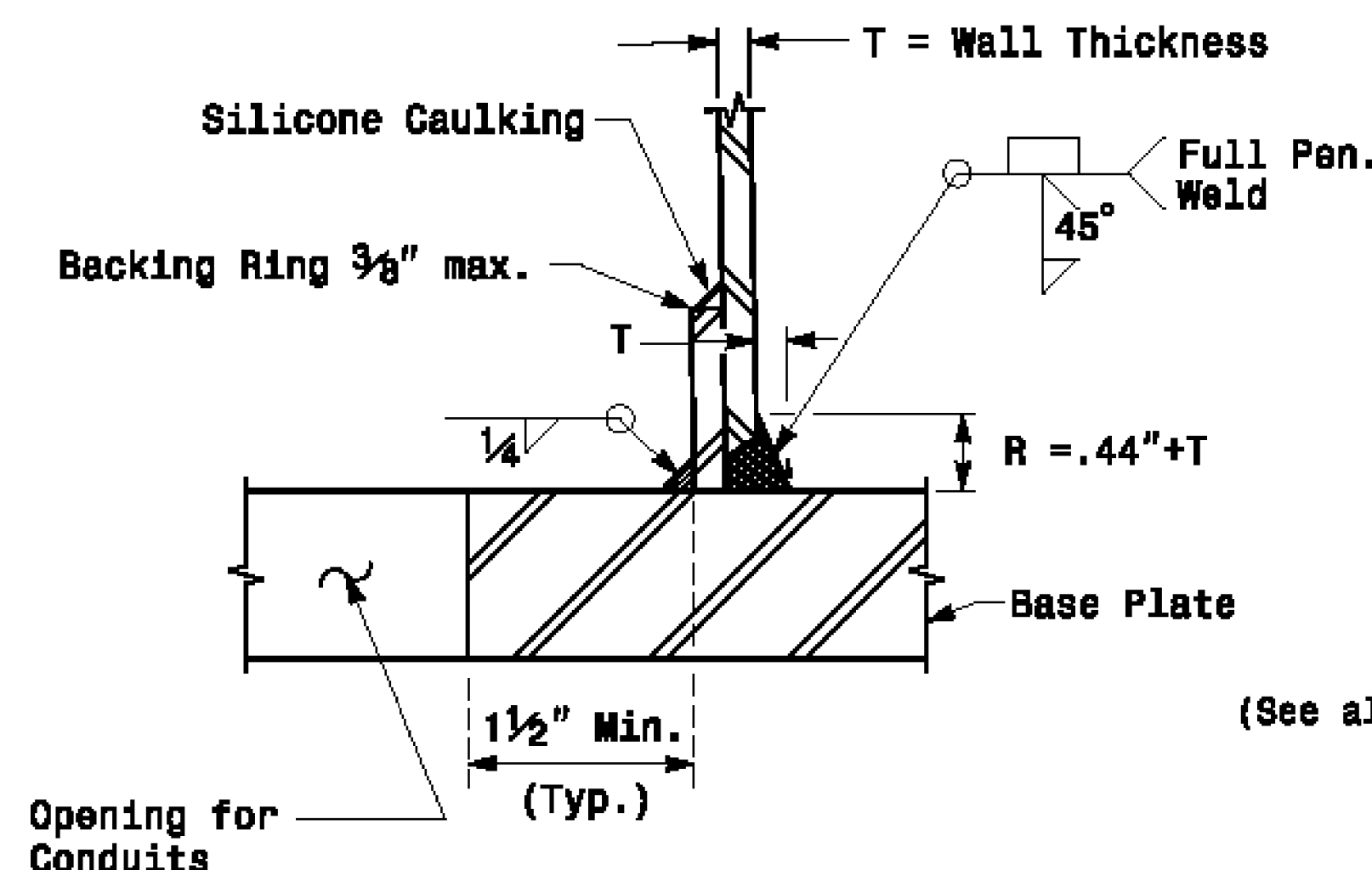


**Section B-B  
Pole Base Plate Details  
(8 and 12 Bolt Pattern)**

2 Cable Clamps designed for variable attachment heights from 1'-6" to 5'-0" below the top of the pole.



**Section A-A  
Radial Orientation for Factory Installed  
Accessories at Top of Pole**

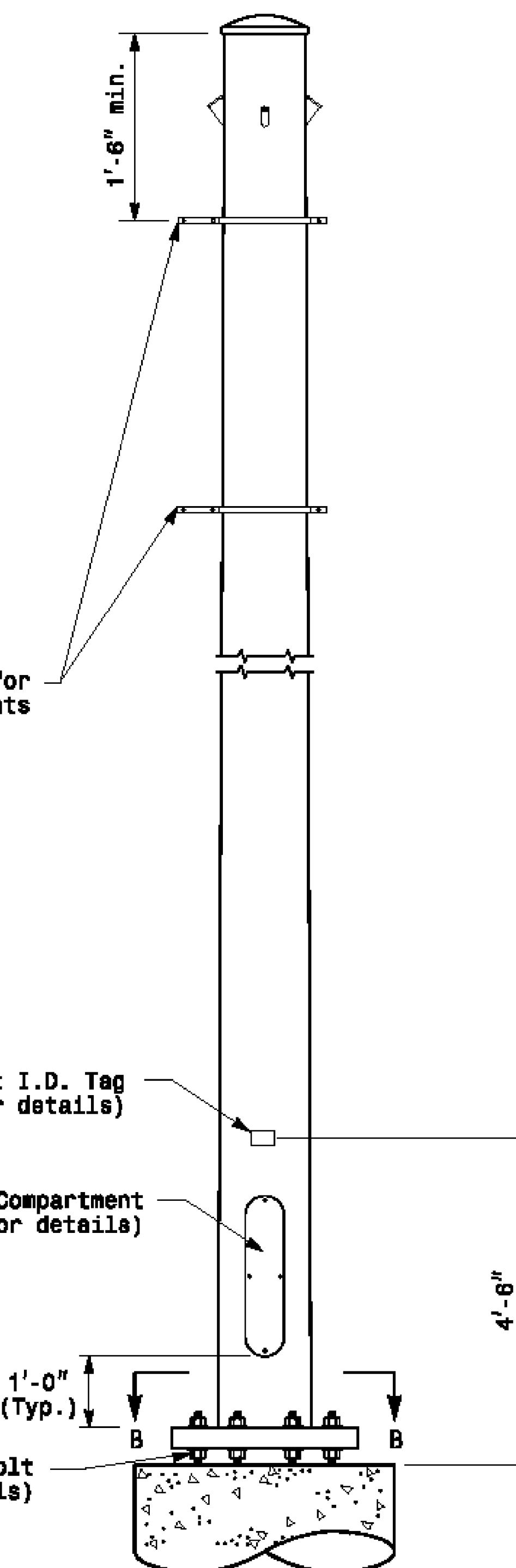


**Section C-C  
(Pole Attachment to Base Plate)  
Full-Penetration  
Groove Weld Detail**

Shaft I.D. Tag (See drawing M2 for details)

Terminal Compartment (See drawing M2 for details)

Anchor Bolt (See also drawing M2 for details)



**Monotube Strain Pole**

Prepared in the Office of:

750 S. Salisbury Street, Raleigh, NC 27609

SCALE: NONE

Typical Fabrication Details For Strain Poles			
PLAN DATE:	OCTOBER 2017	DESIGNED BY:	K. C. DURIGON
PREPARED BY:	N. BITTING	REVIEWED BY:	D. C. BARKAR
REVISIONS		INIT.	DATE

SEAL

Designed by: *D. C. BARKAR*

DATE: 10/11/2017

**Fabrication Details - Strain Poles**

11-067-2017-0825  
S:\15624\15 Strain Poles\15 Strain Poles\15 Strain Poles Detail\15 Strain Poles.dgn  
11/11/2017 10:11:15 AM