

STATE OF NORTH CAROLINA  
DIVISION OF HIGHWAYS

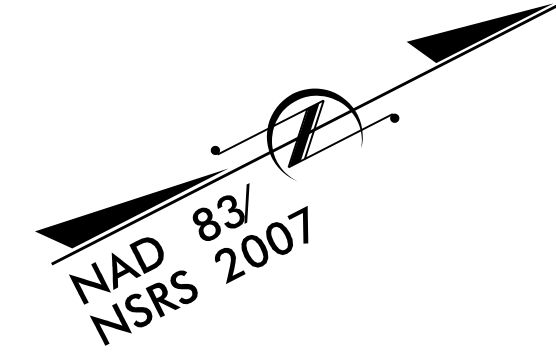
**UTILITIES BY OTHERS PLANS  
ASHE COUNTY**

**LOCATION: US 221 FROM US221 BYPASS TO  
US 221 BUSINESS/NC 88 IN JEFFERSON**

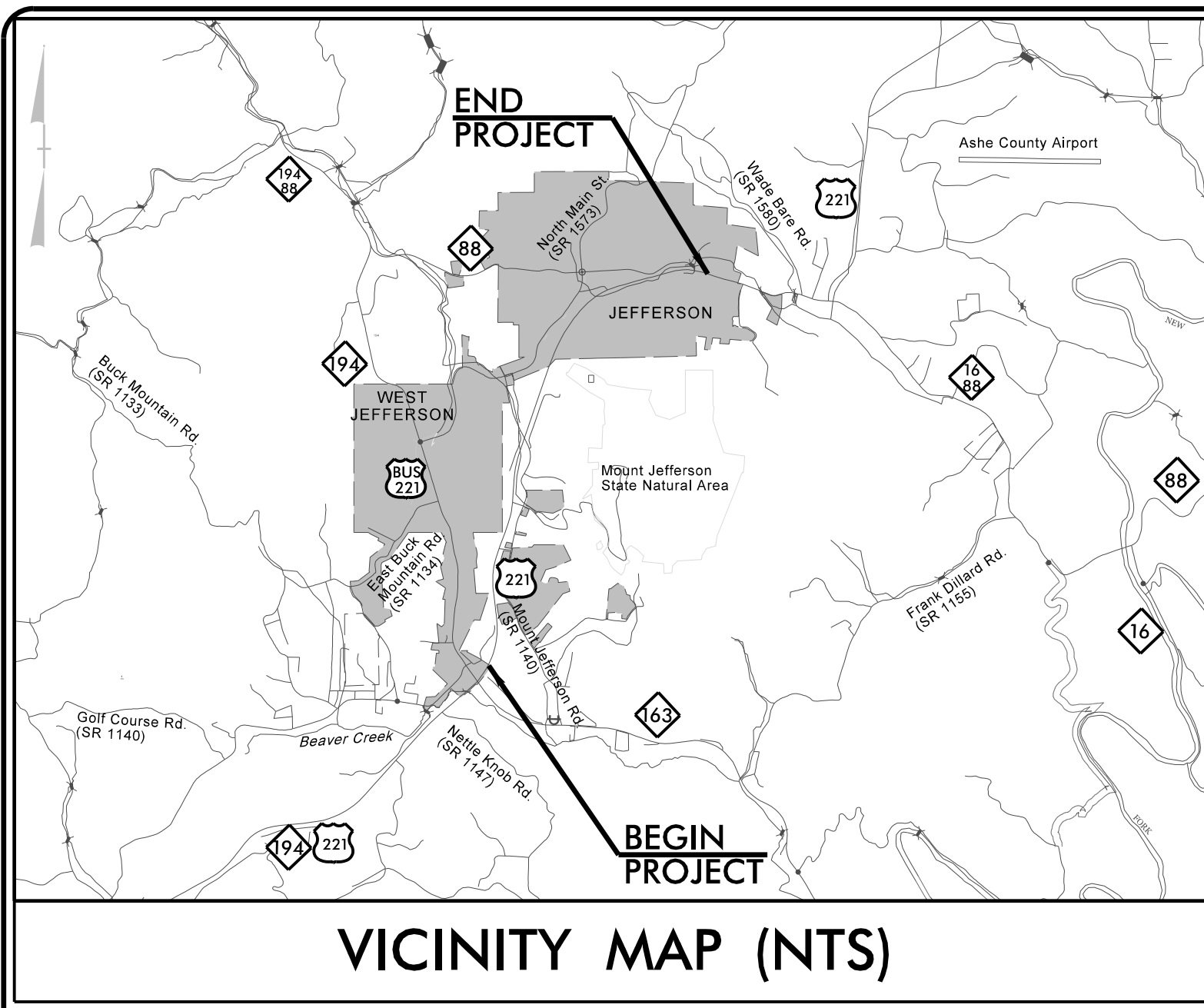
**TYPE OF WORK: RELOCATION OF POWER, GAS AND COMM**

T.I.P. NO.	SHEET NO.
R-2915E	UO-1

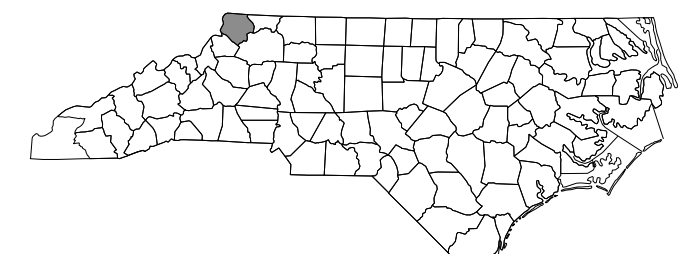
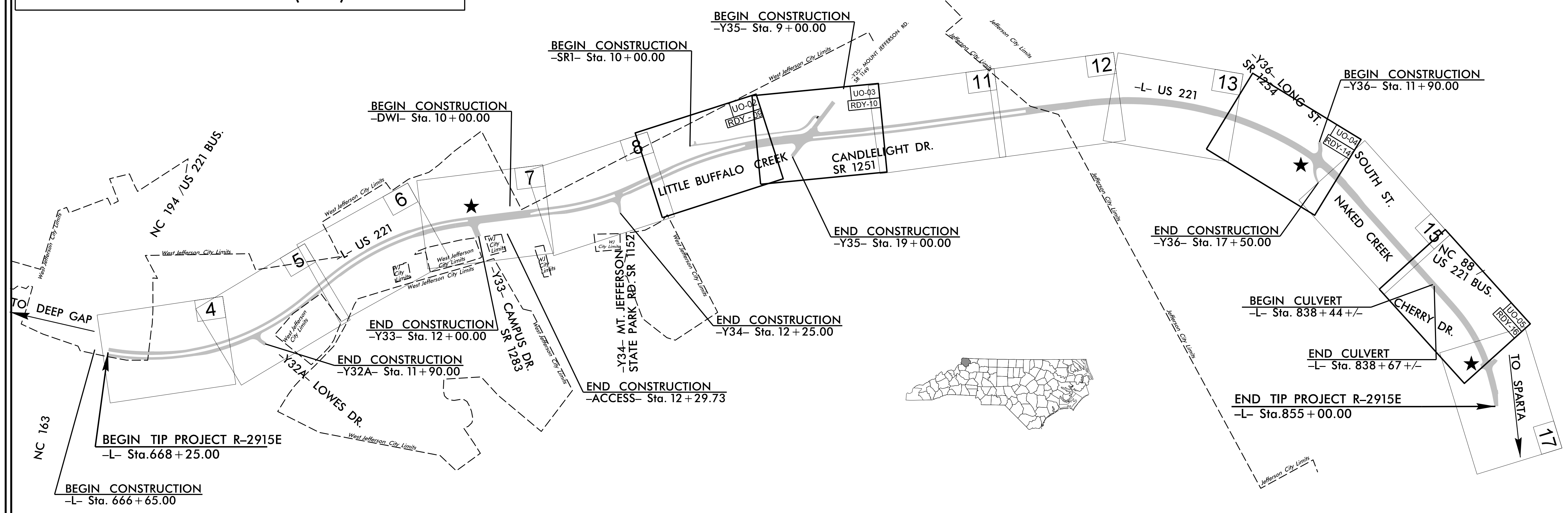
**NOTE:**  
ALL UTILITY WORK SHOWN ON THIS SHEET WILL BE DONE BY OTHERS. NO PAYMENT WILL BE MADE TO THE CONTRACTOR FOR UTILITY WORK SHOWN ON THIS SHEET.



**TIP PROJECT: R-2915E**



**VICINITY MAP (NTS)**



**C204356**

<b>INDEX OF SHEETS</b>	
<u>SHEET NO.:</u>	<u>DESCRIPTION:</u>
UO-1	TITLE SHEET
UO-02 THRU UO-05	UBO PLAN SHEETS

<b>UTILITY OWNERS WITH CONFLICTS</b>
(A) POWER - BLUE RIDGE ENERGY
(B) COMMUNICATIONS - CENTURYLINK
(C) COMMUNICATIONS - SKYLINE TELEPHONE
(D) GAS - FRONTIER NATURAL GAS

PREPARED IN THE OFFICE OF:

**Weston & Sampson**  
WSE of North Carolina, PC

598 East Chatham Street Suite 137  
Cary, NC 27511  
Phone: 919.297.0220 Fax: 919.297.0221  
NC License: C-4847

**ROBIN SOBHA** UTILITY PROJECT COORDINATOR  
**SUSAN HUFFMAN** PROJECT UTILITY MANAGER

**DIVISION OF HIGHWAYS  
DIVISION II**

DIV ADDRESS  
801 STATESVILLE RD  
NORTH WILKESBORO, NC 28659

**JOE LAWS, P.E.**  
DIVISION PROGRAM MANAGER

I:\14\2020\wse\03\local\Projects\NC\Carry\oldServer\Engineer\J085\0659\093\VR-2915E\Utilities\UCo\UBO\UBO DGN Plan Sheets\290\_00\UBO\UBO R2915E-UT-RDY\TS\_U001\_TSH.dgn 3:22:31 PM

### UTILITIES BY OTHERS

**NOTE:**  
ALL PROPOSED UTILITY WORK SHOWN ON THIS SHEET WILL BE DONE BY OTHERS. NO PAYMENT WILL BE MADE TO THE CONTRACTOR FOR PROPOSED UTILITY WORK SHOWN ON THIS SHEET.

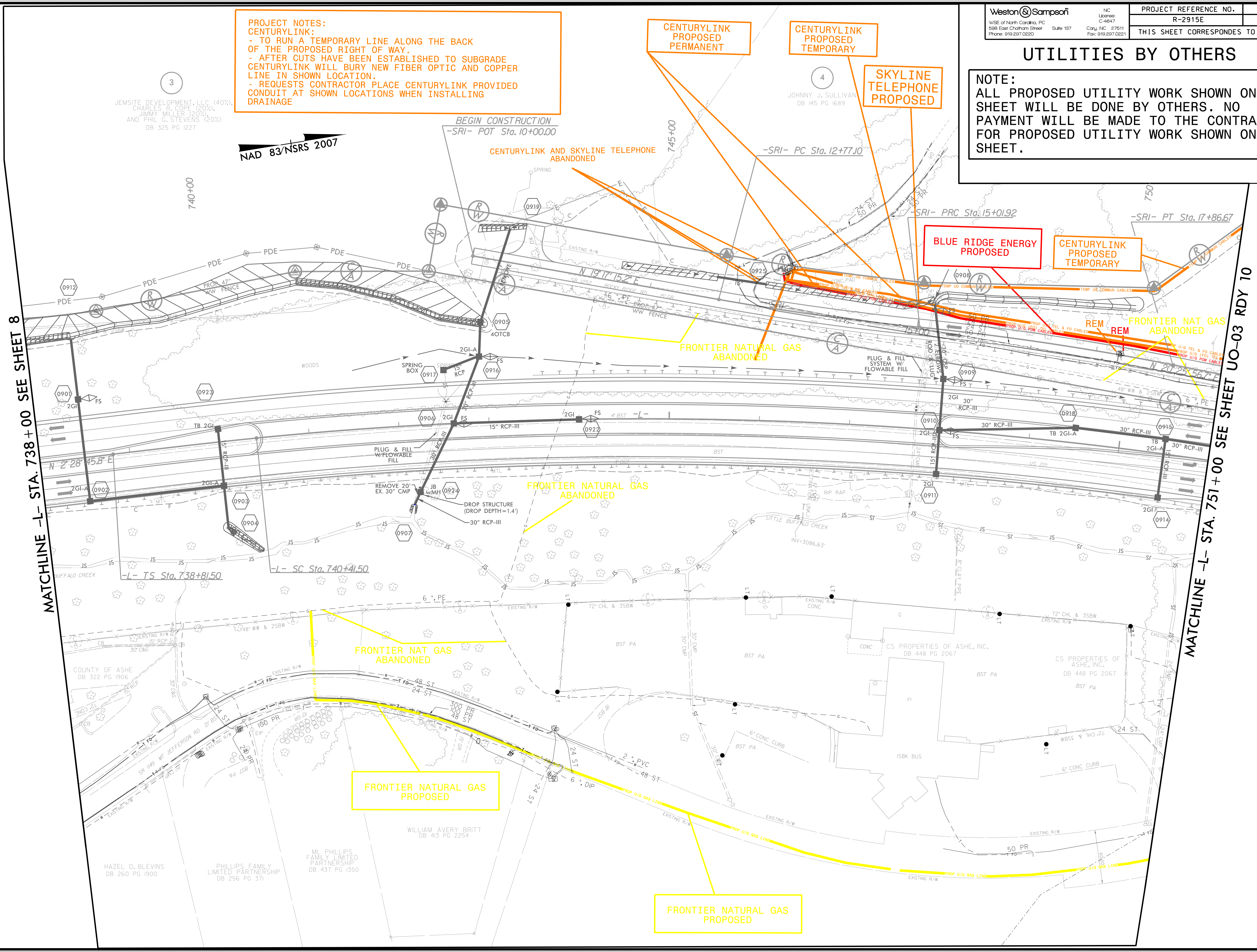
**PROJECT NOTES:**  
CENTURYLINK:  
- TO RUN A TEMPORARY LINE ALONG THE BACK OF THE PROPOSED RIGHT OF WAY.  
- AFTER CUTS HAVE BEEN ESTABLISHED TO SUBGRADE CENTURYLINK WILL BURY NEW FIBER OPTIC AND COPPER LINE IN SHOWN LOCATION.  
- REQUESTS CONTRACTOR PLACE CENTURYLINK PROVIDED CONDUIT AT SHOWN LOCATIONS WHEN INSTALLING DRAINAGE

**CENTURYLINK PROPOSED PERMANENT**  
**CENTURYLINK PROPOSED TEMPORARY**  
**SKYLINE TELEPHONE PROPOSED**

**BLUE RIDGE ENERGY PROPOSED**  
**CENTURYLINK PROPOSED TEMPORARY**

**FRONTIER NAT GAS ABANDONED**  
**FRONTIER NAT GAS ABANDONED**  
**FRONTIER NAT GAS ABANDONED**  
**FRONTIER NAT GAS PROPOSED**

**FRONTIER NAT GAS PROPOSED**



NAD 83/NSRS 2007

MATCHLINE -L- STA. 738 + 00 SEE SHEET 8

MATCHLINE -L- STA. 751 + 00 SEE SHEET UO-03 RDY 10

I:\10\2020\local\WSE\Projects\NC\CorridorServer\Engineer\Jobs\6659\093\RDY-2915E\Utilities\UoCoor\UO-02\UO-02.dgn  
 8/17/2020 10:53:26 AM





