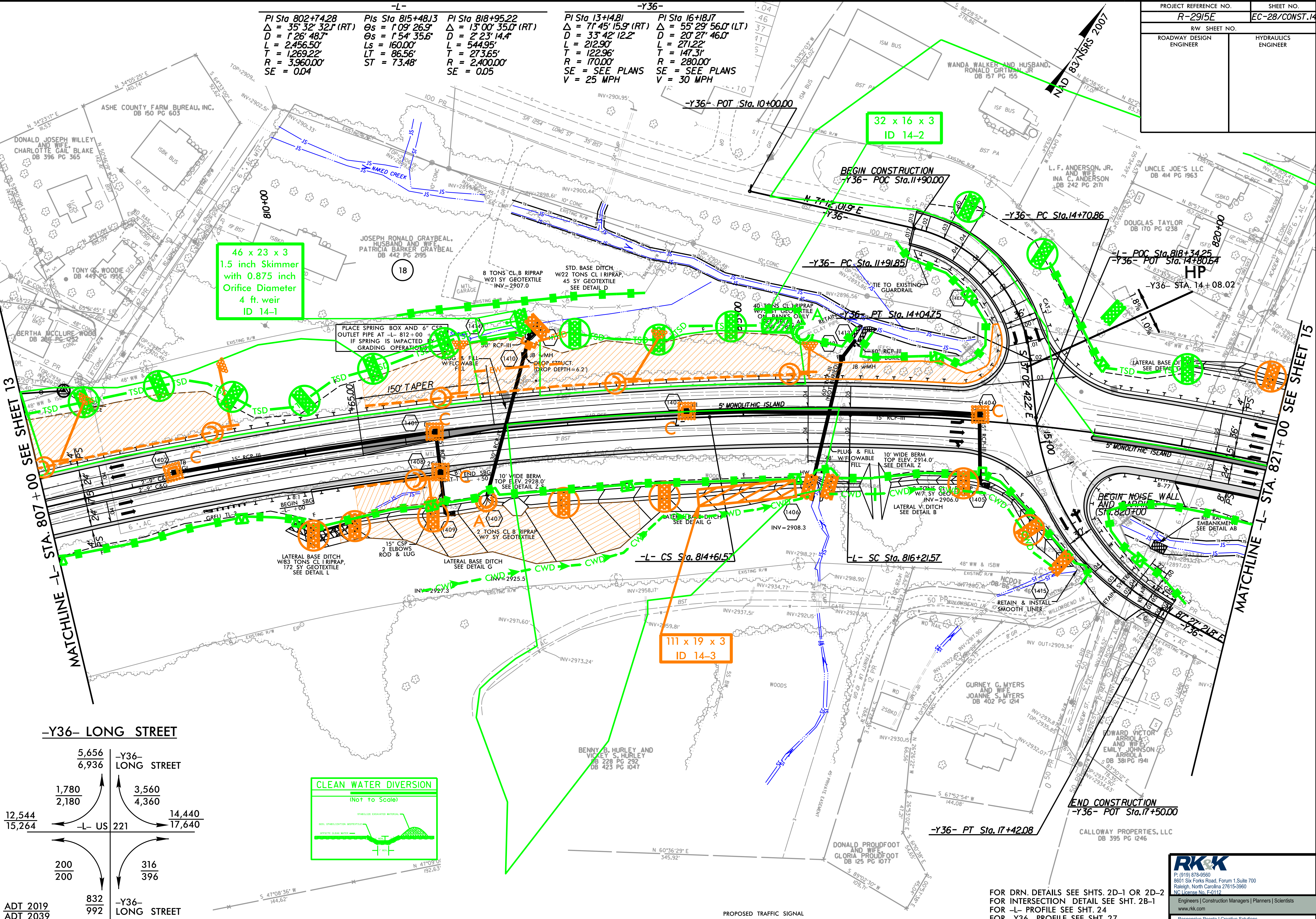


PROJECT REFERENCE NO.	SHEET NO.
R-2915E	EC-28/CONST.14
RW SHEET NO.	HYDRAULICS ENGINEER
ROADWAY DESIGN ENGINEER	

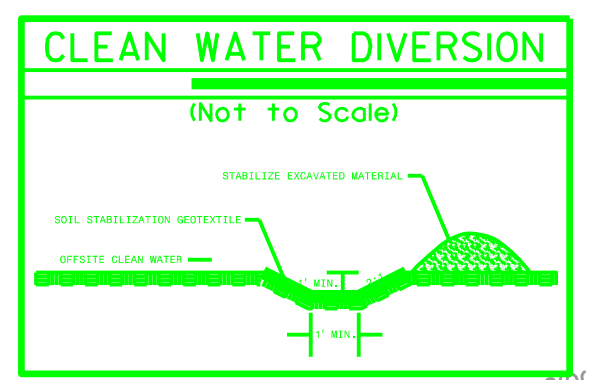
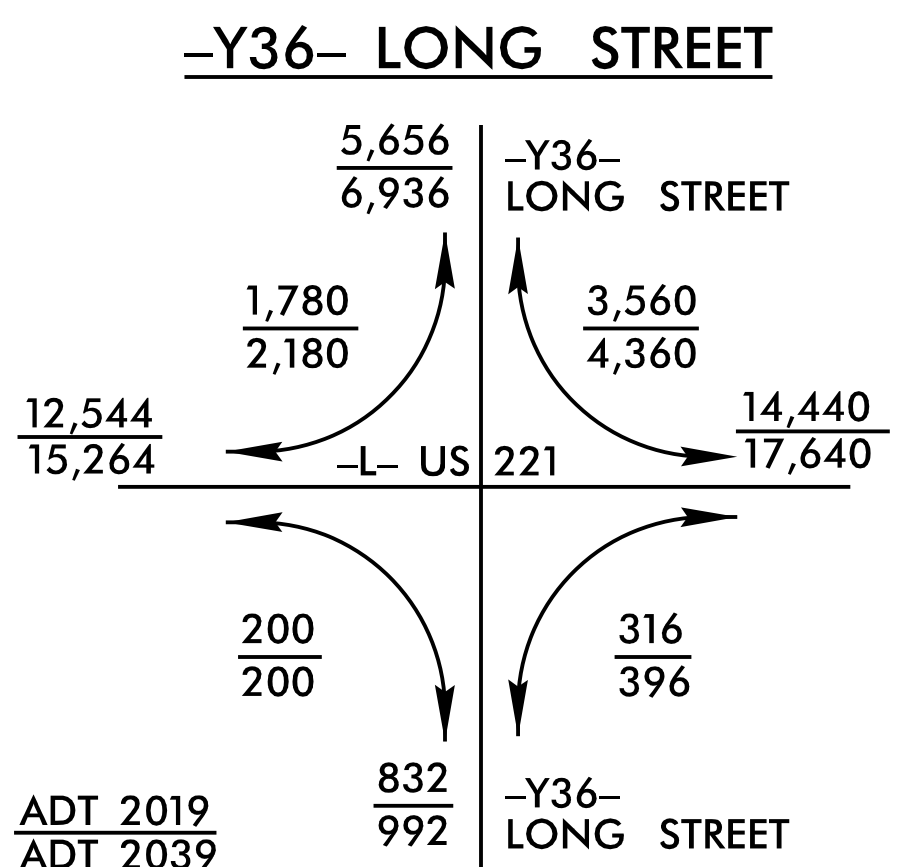
PI Sta 802+74.28 $\Delta = 35^{\circ} 32' 32.1''$ (RT) $D = 1^{\circ} 26' 48.7''$ $L = 2,456.50'$ $T = 1,269.22'$ $R = 3,960.00'$ $SE = 0.04$	PIs Sta 815+48.13 $\Theta_s = 1^{\circ} 09' 26.9''$ $\Theta_s = 1^{\circ} 54' 35.6''$ $L_s = 160.00'$ $LT = 86.56'$ $ST = 73.48'$	PI Sta 818+95.22 $\Delta = 13^{\circ} 00' 35.0''$ (RT) $D = 2^{\circ} 23' 14.4''$ $L = 544.95'$ $T = 273.65'$ $R = 2,400.00'$ $SE = 0.05$	PI Sta 13+14.81 $\Delta = 71^{\circ} 45' 15.9''$ (RT) $D = 33^{\circ} 42' 12.2''$ $L = 212.90'$ $R = 122.96'$ $V = 25$ MPH	PI Sta 16+18.17 $\Delta = 55^{\circ} 29' 56.0''$ (LT) $D = 20^{\circ} 27' 46.0''$ $L = 271.22'$ $T = 147.31'$ $R = 280.00'$ $V = 30$ MPH
--	---	--	--	---



46 x 23 x 3
1.5 inch Skimmer
with 0.875 inch
Orifice Diameter
4 ft. weir
ID 14-1

32 x 16 x 3
ID 14-2

111 x 19 x 3
ID 14-3



END CONSTRUCTION
-Y36- POT Sta. 17+50.00

RK&K
P: (919) 378-9550
8601 Six Forks Road, Forum 1, Suite 700
Raleigh, North Carolina 27615-3960
NC License No. F-0112

Engineers | Construction Managers | Planners | Scientists
www.rk.com
Responsive People | Creative Solutions

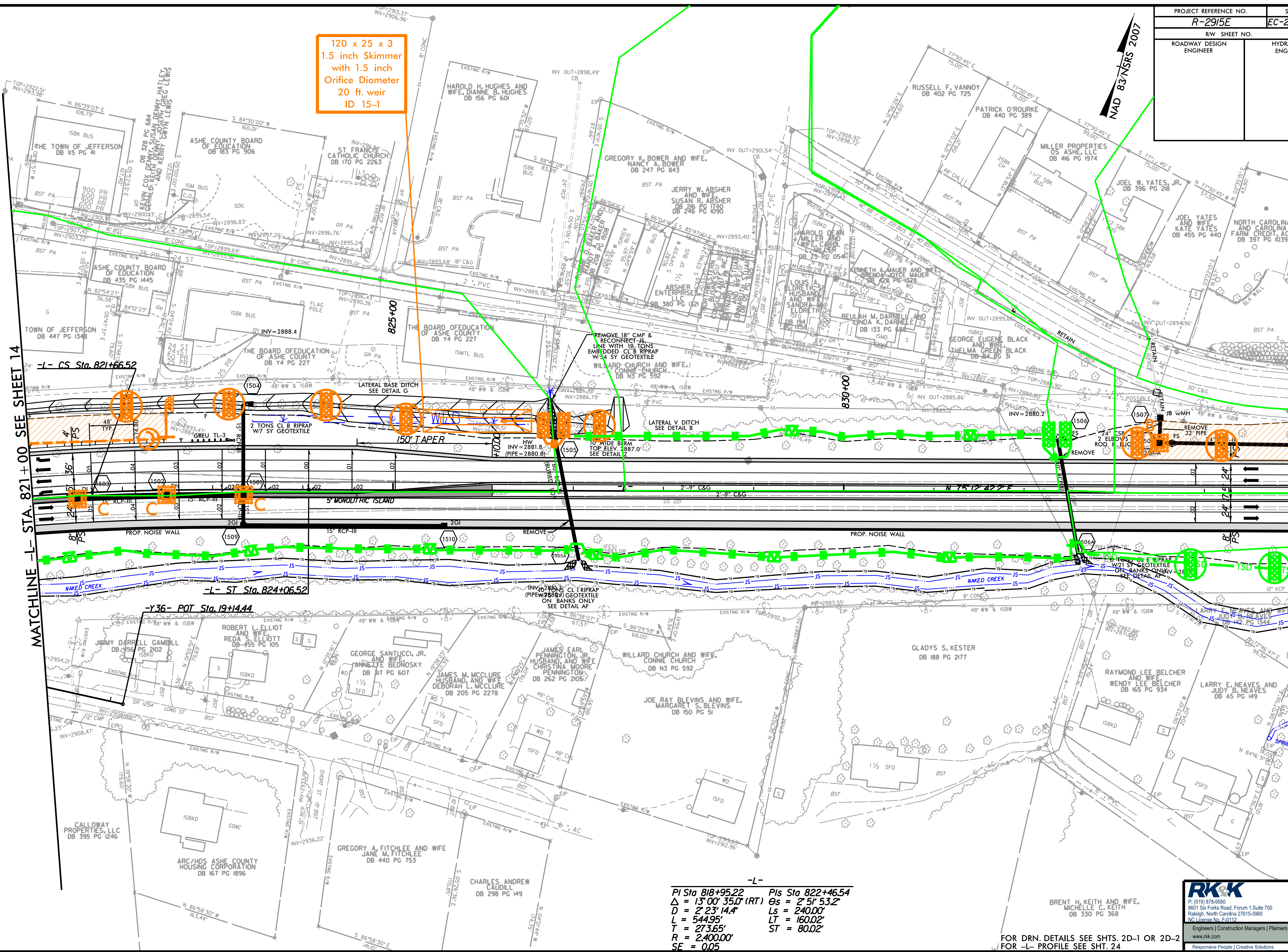
FOR DRN. DETAILS SEE SHTS. 2D-1 OR 2D-2
FOR INTERSECTION DETAIL SEE SHT. 2B-1
FOR -L- PROFILE SEE SHT. 24
FOR -Y36- PROFILE SEE SHT. 27

8/17/19
C:\Users\psh\OneDrive\Documents\Projects\2915E\HYD_EC_28.psh28.dgn

PROJECT REFERENCE NO.	SHEET NO.
R-2915E	EC-29/CONST.15
RW SHEET NO.	HYDRAULICS ENGINEER
ROADWAY DESIGN ENGINEER	

120 x 25 x 3
1.5 inch Skimmer
with 1.5 inch
Orifice Diameter
20 ft. weir
ID 15-1

NAD 83 NSRS 2007



MATCHLINE -L- STA. 821+00 SEE SHEET 14

MATCHLINE -L- STA. 835+00 SEE SHEET 16

-L- CS Sta. 821+66.52

-L- ST Sta. 824+06.52

-Y36- POT Sta. 19+14.44

-L-
 PI Sta 818+95.22 PI Sta 822+46.54
 $\Delta = 13^{\circ}00'35.0''$ (RT) $\Delta s = 2^{\circ}51'53.2''$
 $D = 2^{\circ}23'14.4''$ $Ls = 240.00'$
 $L = 544.95'$ $LT = 160.02'$
 $T = 273.65'$ $ST = 80.02'$
 $R = 2,400.00'$
 $SE = 0.05$

FOR DRN. DETAILS SEE SHTS. 2D-1 OR 2D-2
 FOR -L- PROFILE SEE SHT. 24

RK&K
 P: (919) 378-9550
 8601 Six Forks Road, Forum 1, Suite 700
 Raleigh, North Carolina 27615-3960
 NC License No. F-0112
 Engineers | Construction Managers | Planners | Scientists
 www.rk.com
 Responsive People | Creative Solutions

8/17/19
 R:\Projects\2019\2915E\Hydraulics\CADD\PSH\Erosion Control\1R-2915E-HYD_EC_psh29.dgn

