

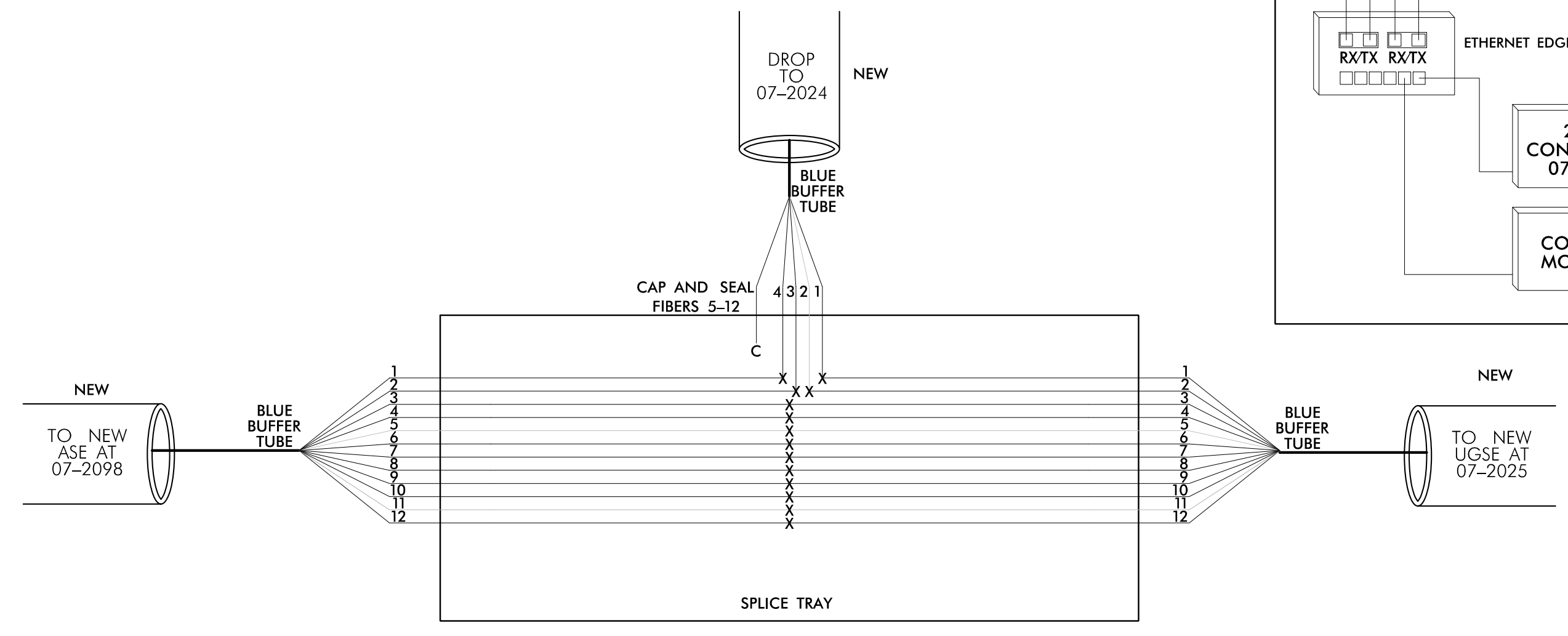
NEW UNDERGROUND SPlice ENCLOSURE
 SR 1007 (MEBANE OASK ROAD)
 AT
 I-40 WB /I-85 SB RAMPS
 SIG. INV. # 07-2024

COLOR CODE
 TIA/EIA 598-A

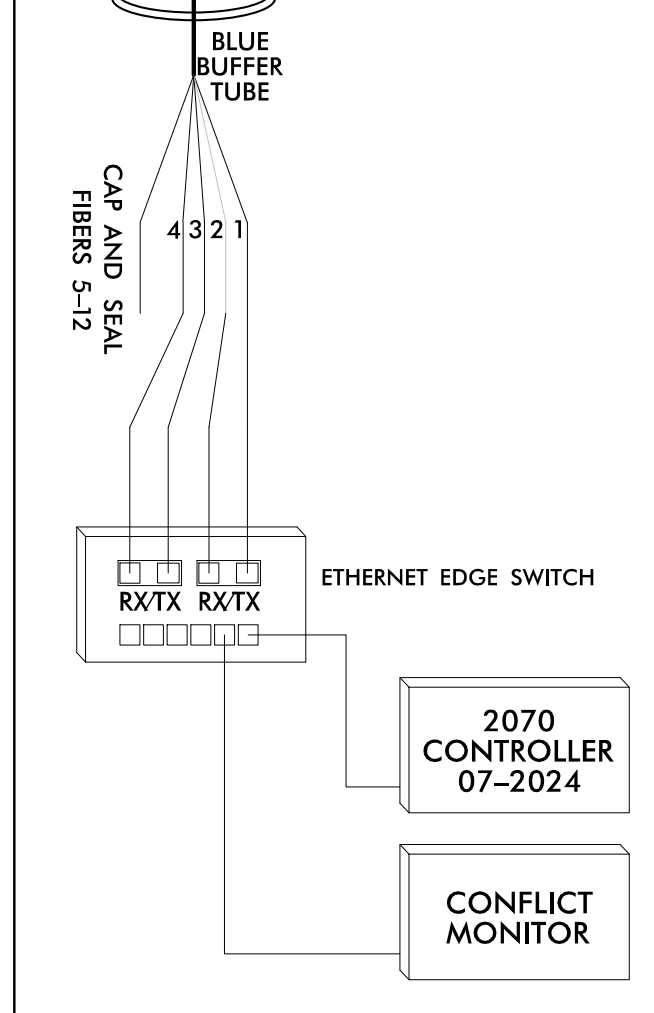
(1) BLUE	(7) RED
(2) ORANGE	(8) BLACK
(3) GREEN	(9) YELLOW
(4) BROWN	(10) VIOLET
(5) SLATE	(11) ROSE
(6) WHITE	(12) AQUA

NOTES:
 UNUSED FIBERS LEFT COILED AND STORED IN SPlice TRAY.
 UNUSED BUFFER TUBES LEFT COILED AND STORED IN SPlice TRAY.

LEGEND
 X = FUSION SPlice
 C = CAP IN TRAY



CONTROLLER CABINET
 SIG. INV. # 07-2024



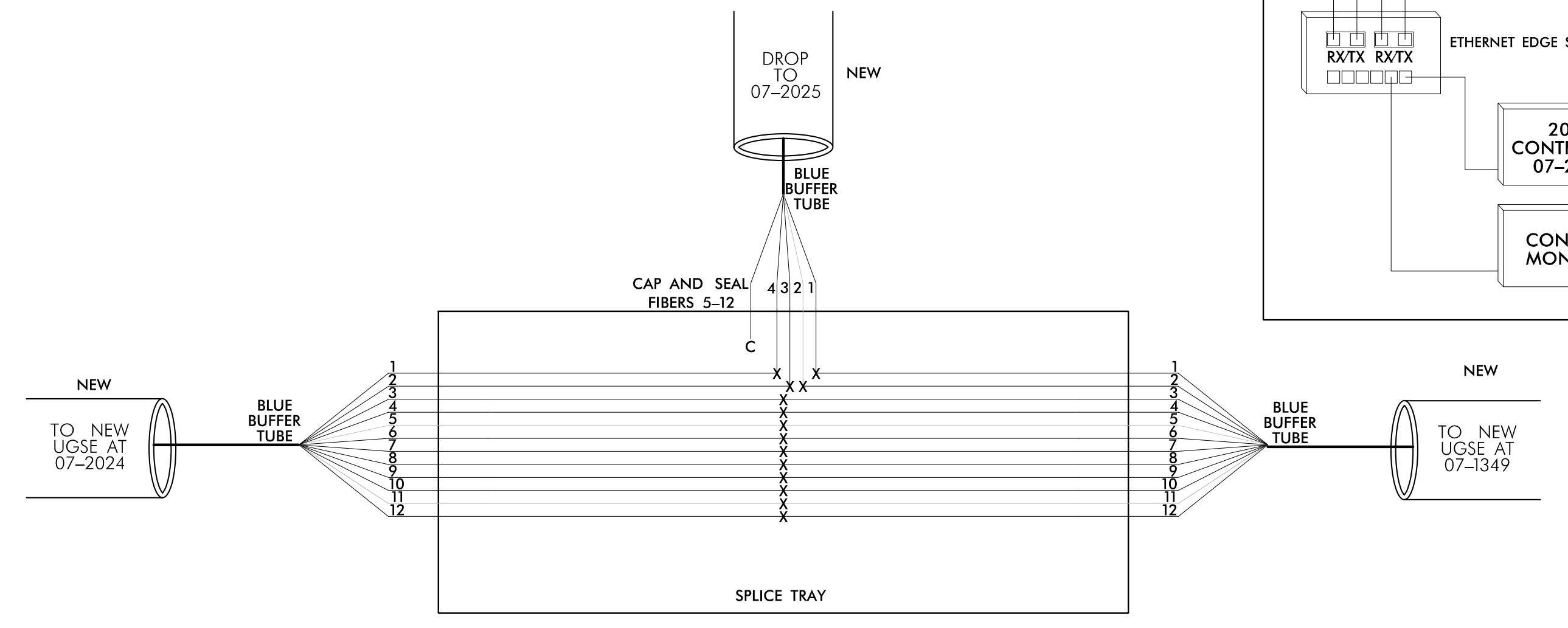
NEW UNDERGROUND SPlice ENCLOSURE
 SR 1007 (MEBANE OASK ROAD)
 AT
 I-40 EB /I-85 NB RAMPS
 SIG. INV. # 07-2025

COLOR CODE
 TIA/EIA 598-A

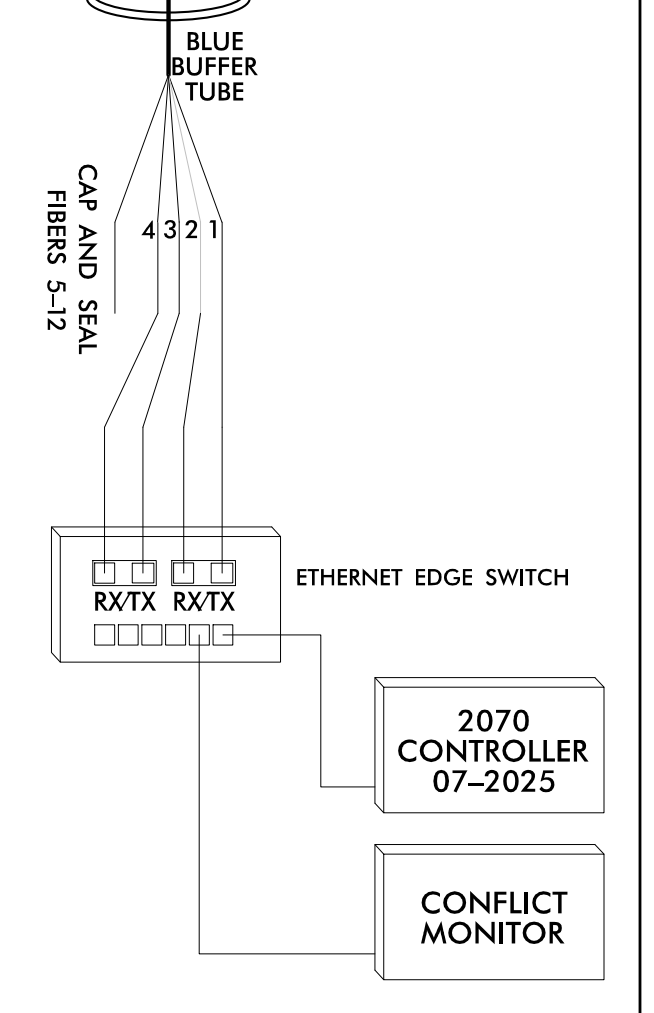
(1) BLUE	(7) RED
(2) ORANGE	(8) BLACK
(3) GREEN	(9) YELLOW
(4) BROWN	(10) VIOLET
(5) SLATE	(11) ROSE
(6) WHITE	(12) AQUA

NOTES:
 UNUSED FIBERS LEFT COILED AND STORED IN SPlice TRAY.
 UNUSED BUFFER TUBES LEFT COILED AND STORED IN SPlice TRAY.

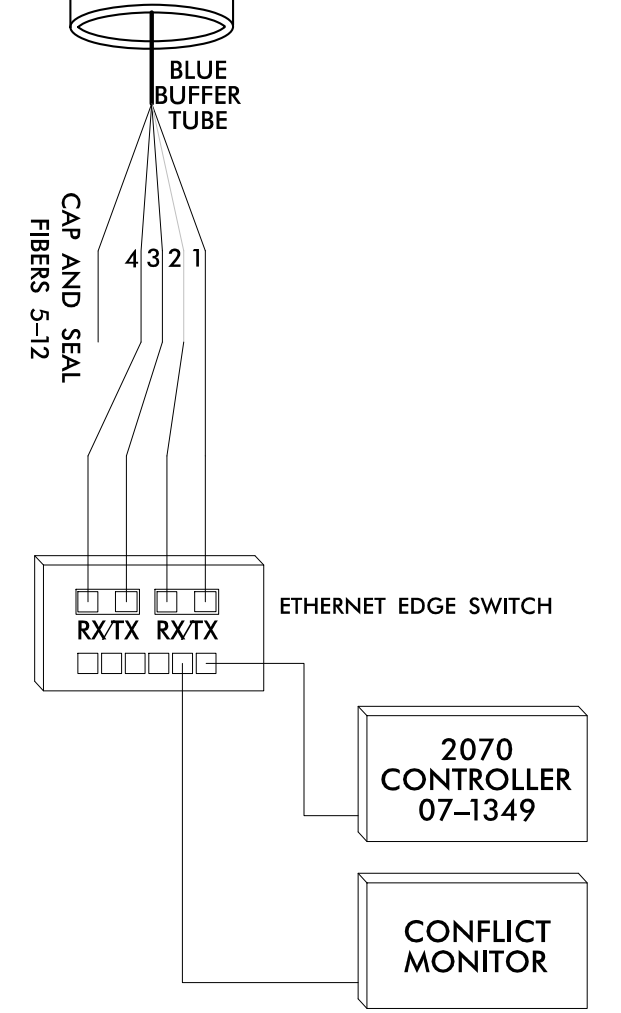
LEGEND
 X = FUSION SPlice
 C = CAP IN TRAY



CONTROLLER CABINET
 SIG. INV. # 07-2025



CONTROLLER CABINET
 SIG. INV. # 07-1349



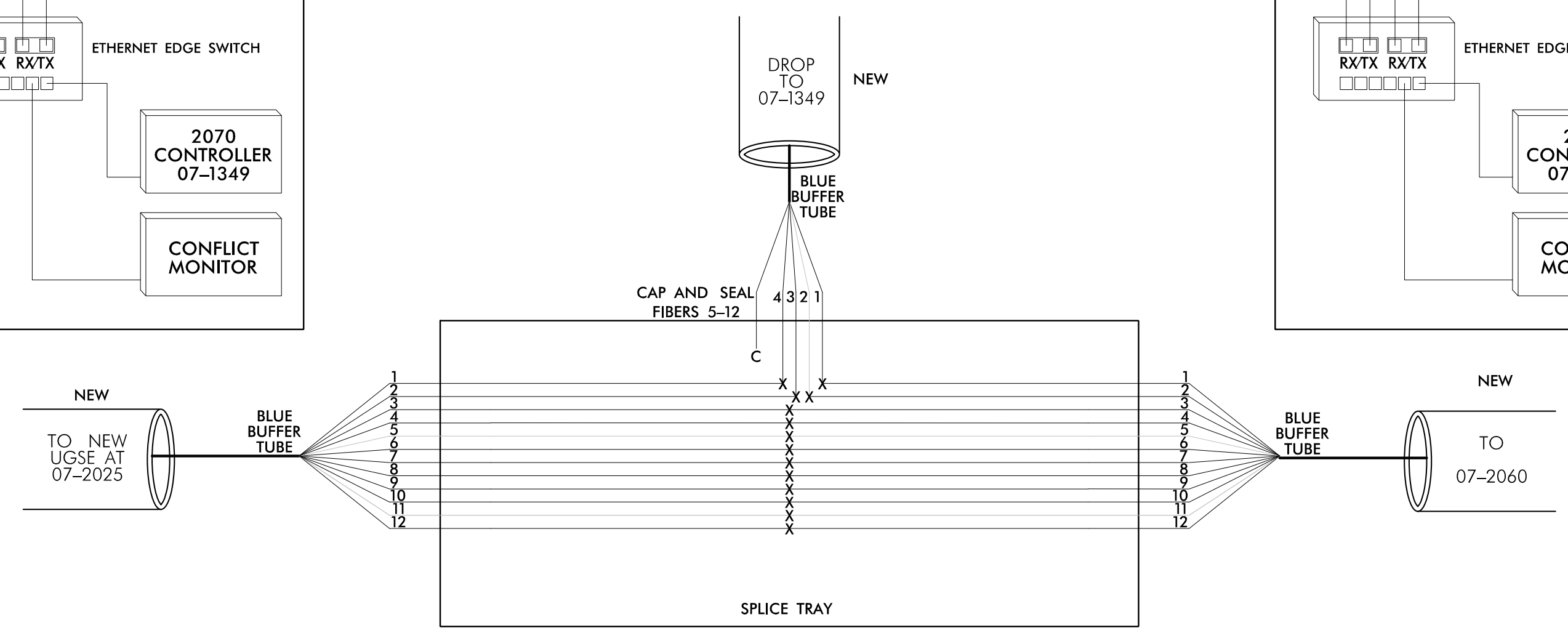
NEW UNDERGROUND SPlice ENCLOSURE
 SR 1007 (MEBANE OASK ROAD) AT
 SR 2186 (BRUNDAGE LANE) /
 SR 2210 (FOREST OAKS LANE)
 SIG. INV. # 07-1349

COLOR CODE
 TIA/EIA 598-A

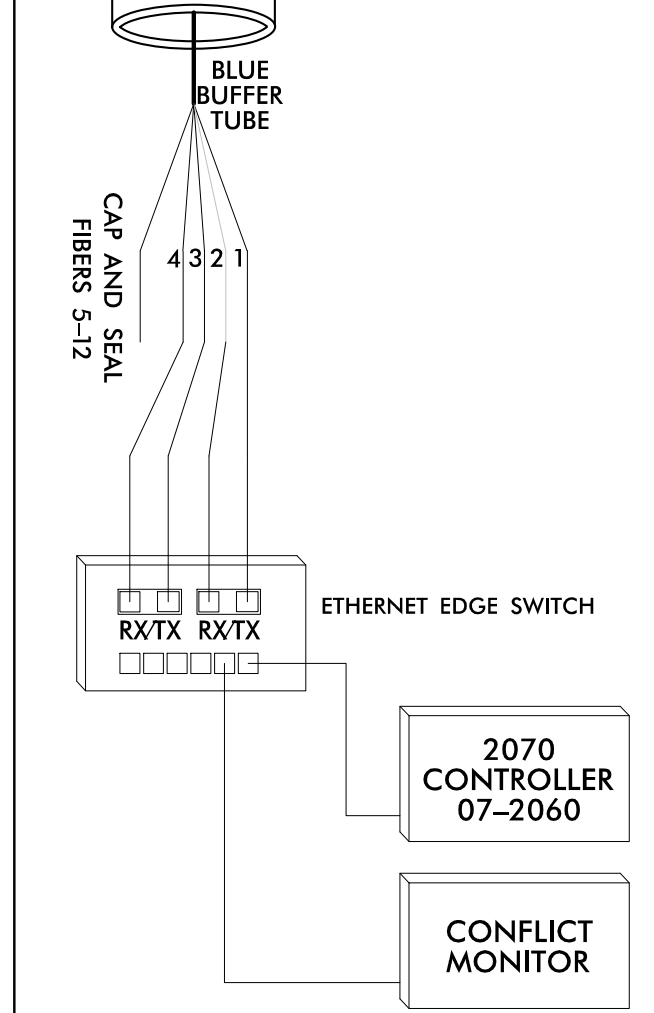
(1) BLUE	(7) RED
(2) ORANGE	(8) BLACK
(3) GREEN	(9) YELLOW
(4) BROWN	(10) VIOLET
(5) SLATE	(11) ROSE
(6) WHITE	(12) AQUA

NOTES:
 UNUSED FIBERS LEFT COILED AND STORED IN SPlice TRAY.
 UNUSED BUFFER TUBES LEFT COILED AND STORED IN SPlice TRAY.

LEGEND
 X = FUSION SPlice
 C = CAP IN TRAY



CONTROLLER CABINET
 SIG. INV. # 07-2060



NOTES:

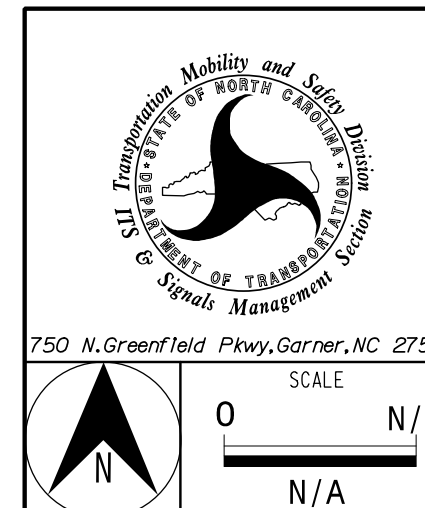
1. THE NCDOT DIVISION 7 WILL FURNISH THE CELL MODEM. EIGHT (8) WEEKS PRIOR TO BEGINNING WORK ON THE SIGNAL SYSTEM, CONTACT THE NCDOT DIVISION 7 DEPUTY TRAFFIC ENGINEER MARK ALDRIDGE AT 336-487-0175 TO OBTAIN THE CELL MODEM AND REQUEST THE DIVISION'S ASSISTANCE IN PROGRAMMING THE NEW ETHERNET EDGE SWITCHES WITH THE NECESSARY NETWORK CONFIGURATION DATA, INCLUDING BUT NOT LIMITED TO: THE PROJECT IP ADDRESS, DEFAULT GATEWAY, SUBNET MASK AND VLAN ID INFORMATION. NOTIFY THE DEPUTY TRAFFIC ENGINEER AFTER ALL WORK IS PERFORMED TO ENSURE THAT ALL FIBER CIRCUITS ARE FUNCTIONING PROPERLY. WORK IS NOT COMPLETE UNTIL THE SIGNAL SYSTEM IS BACK UP AND OPERATIONAL.
2. CONTRACTOR TO RECORD EXISTING SPlice ARRANGEMENT FOR COMPARISON TO THE SUPPLIED SPlice DETAILS. IF DISCREPANCIES EXIST, CONTACT THE ENGINEER TO DETERMINE HOW TO PROCEED WITH RESPLICING. PROVIDE AS-BUILT PLANS TO THE ENGINEER IF FINAL SPlice ARRANGEMENT DIFFERS FROM THE SUPPLIED SPlice DETAILS.
3. ETHERNET SWITCH TERMINATION CONFIGURATIONS ARE GENERIC. CONTRACTOR IS RESPONSIBLE FOR DETERMINING \ ENSURING PROPER TERMINATIONS.
4. INCLUDE ON THE COVER OF EACH SPlice TRAY THE FOLLOWING:
 REFERENCE NCDOT 2018 STANDARD SPECIFICATIONS FOR ROADS AND STRUCTURES SECTION 1731 "FIBER OPTIC SPlice ENCLOSURE"

1) SPlice LOCATION
 2) DATE
 3) COMPANY NAME
 4) NAME OF INDIVIDUAL PERFORMING THE SPlicing

PRIOR TO INSTALLING THE COVER ON THE SPlice TRAY TAKE A DIGITAL PHOTOGRAPH SHOWING THE SPlice TRAY AND INFORMATION SHOWN ABOVE (1-4) AND SUBMIT PHOTOGRAPH ALONG WITH OTDR TEST RESULTS.

\$\$\$\$\$SYTIME\$\$\$\$\$
 \$\$\$SYTIME\$\$\$\$\$
 \$\$\$SYTIME\$\$\$\$\$
 \$\$\$SYTIME\$\$\$\$\$
 \$\$\$SYTIME\$\$\$\$\$

PREPARED IN THE OFFICE OF:
Accelerate Engineering, PLLC
 875 Walnut Street, Suite 316
 Cary, NC 27511
 Tel: 919.263.5678 Fax: 919.263.5687
 NC License No. P-1442



FINAL COMMUNICATIONS PLAN	
SPlice DETAILS	
Division 7 Alamance County	Mebane
PLAN DATE: November 2019	REVIEWED BY: Z. "Gavin" Teng
PREPARED BY: Z. "Gavin" Teng	REVIEWED BY:
REVISIONS	INIT. DATE

DOCUMENT NOT CONSIDERED FINAL UNLESS ALL SIGNATURES COMPLETED

SEAL

PROFESSIONAL ENGINEER

ZHAOLONG TENG

032179

12/17/2019

CADD Filename: