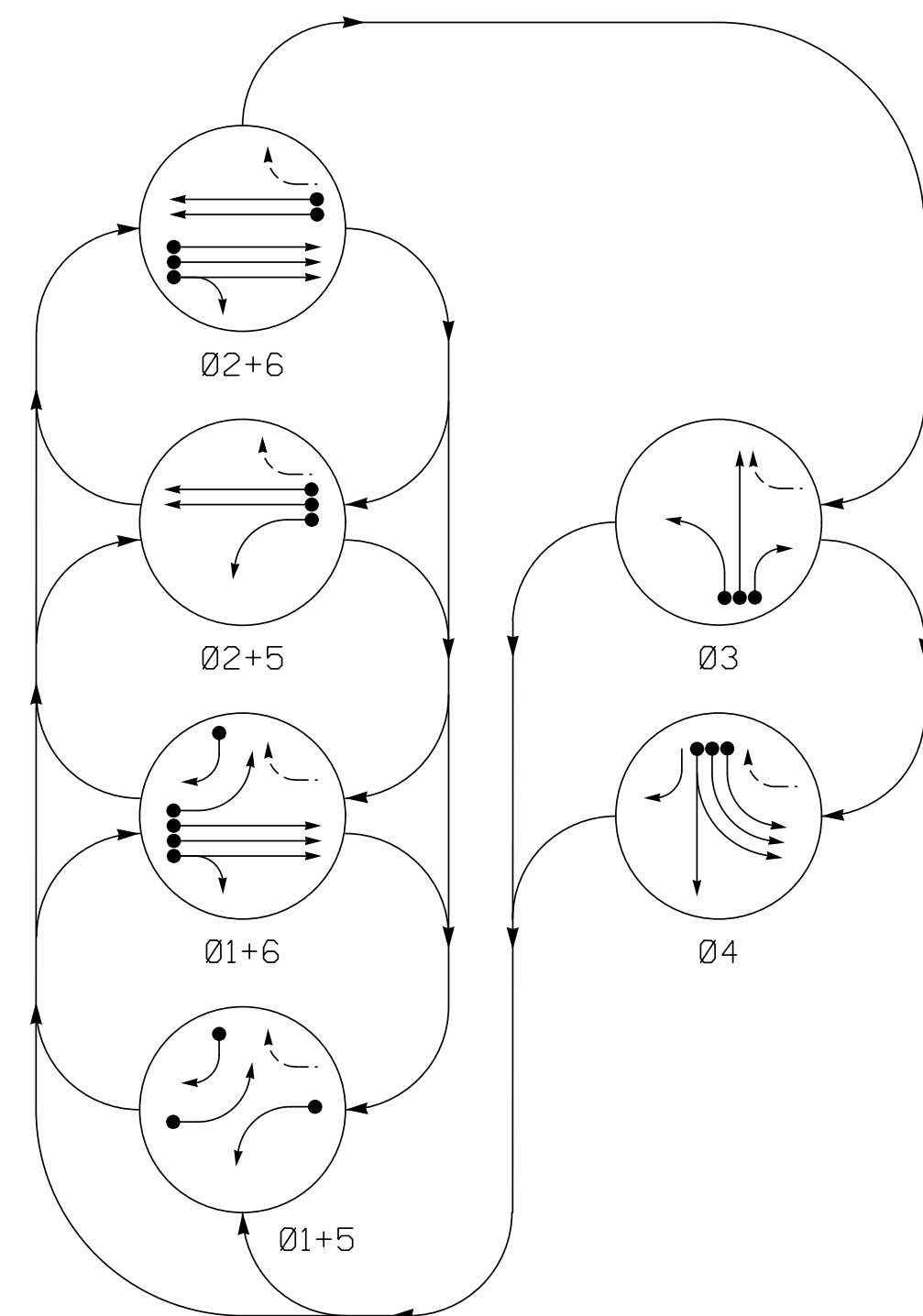


PHASING DIAGRAM



PHASING DIAGRAM DETECTION LEGEND

- DETECTED MOVEMENT
- UNDETECTED MOVEMENT (OVERLAP)
- UNSIGNALIZED MOVEMENT

EV PREEMPT PHASES (Medium Priority)

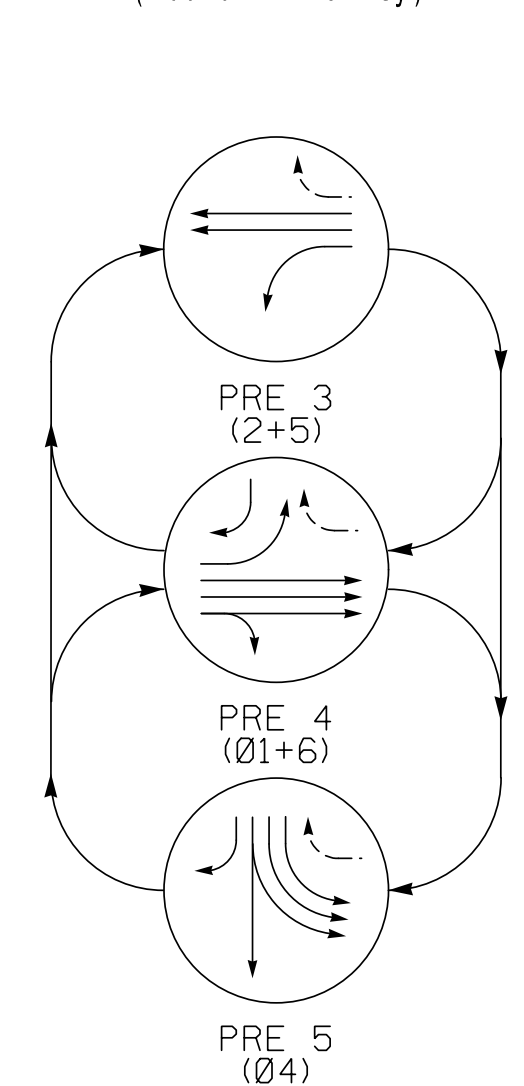


TABLE OF OPERATION

SIGNAL FACE	PHASE											
	Ø1+5	Ø1+6	Ø2+5	Ø2+6	Ø3	Ø4	PRE 3	PRE 4	PRE 5	FLASH	Y	H
11	←	←	←	←	←	←	←	←	←	←	←	←
21, 22	R	R	G	G	R	R	G	R	R	Y		
31	←	←	←	←	←	←	←	←	←	←	←	←
32, 33	R	R	R	R	G	R	R	R	R	R	R	R
41, 42	←	←	←	←	←	←	←	←	←	←	←	←
43	R	R	R	R	R	G	R	R	G	R		
44	←	←	←	←	←	←	←	←	←	←	←	←
51	←	←	←	←	←	←	←	←	←	←	←	←
61, 62, 63	R	G	R	G	R	R	R	G	R	Y		

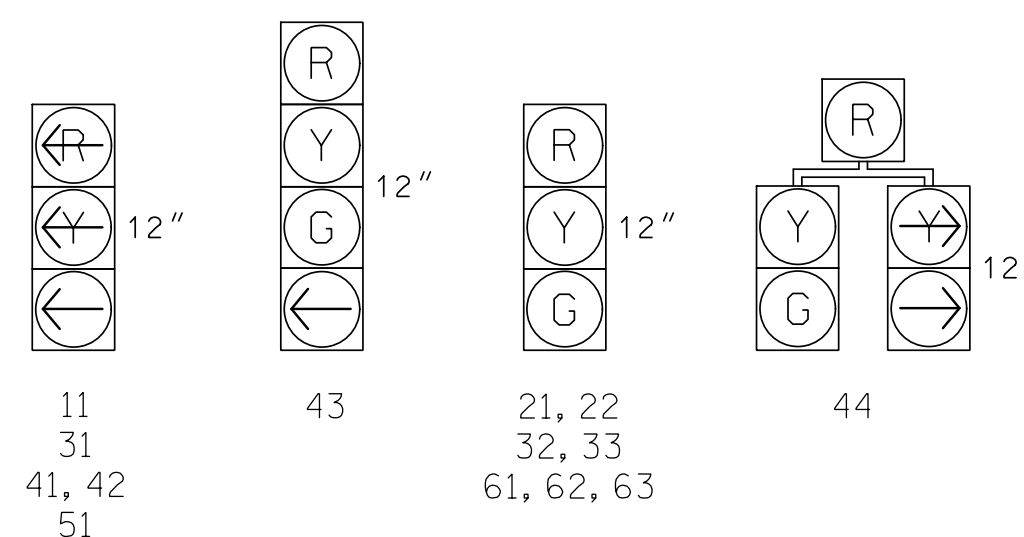
ASC/3 DETECTOR INSTALLATION CHART

ZONE	SIZE (FT)	DISTANCE FROM STOPBAR (FT)	TURNS	NEW LOOP	PROGRAMMING							
					PHASE	CALLING	EXTEND TIME	DELAY TIME	USE ADDED INITIAL	TYPE	LOOP	NEW CARD
1A	6x40	0	*	*	1	Yes	-	3	-	S	-	*
1B	6x40	0	*	*	1	Yes	-	15	-	S	-	*
2A	6x6	70	*	*	2	Yes	-	-	-	S	-	*
2B	6x6	70	*	*	2	Yes	-	-	-	S	-	*
3A	6x40	0	*	*	3	Yes	-	3	-	S	-	*
3B	6x40	0	*	*	3	Yes	-	-	-	S	-	*
3C	6x40	0	*	*	3	Yes	-	15	-	S	-	*
4A	6x40	0	*	*	4	Yes	-	-	-	S	-	*
4B	6x40	0	*	*	4	Yes	-	-	-	S	-	*
4C	6x40	0	*	*	4	Yes	-	-	-	S	-	*
5A	6x40	0	*	*	5	Yes	-	-	-	S	-	*
6A	6x6	70	*	*	6	Yes	-	-	-	S	-	*
6B	6x6	70	*	*	6	Yes	-	-	-	S	-	*
6C	6x6	70	*	*	6	Yes	-	-	-	S	-	*
S3	6X6	+165	*	*	-	No	-	-	-	N	X	*
S4	6X6	+165	*	*	-	No	-	-	-	N	X	*
S5	6X6	+165	*	*	-	No	-	-	-	N	X	*
S26	6X6	+130	*	*	-	No	-	-	-	N	X	*
S27	6X6	+130	*	*	-	No	-	-	-	N	X	*

* Video Detection Zone

SIGNAL FACE I.D.

All Heads L.E.D.



ASC/3 TIMING CHART

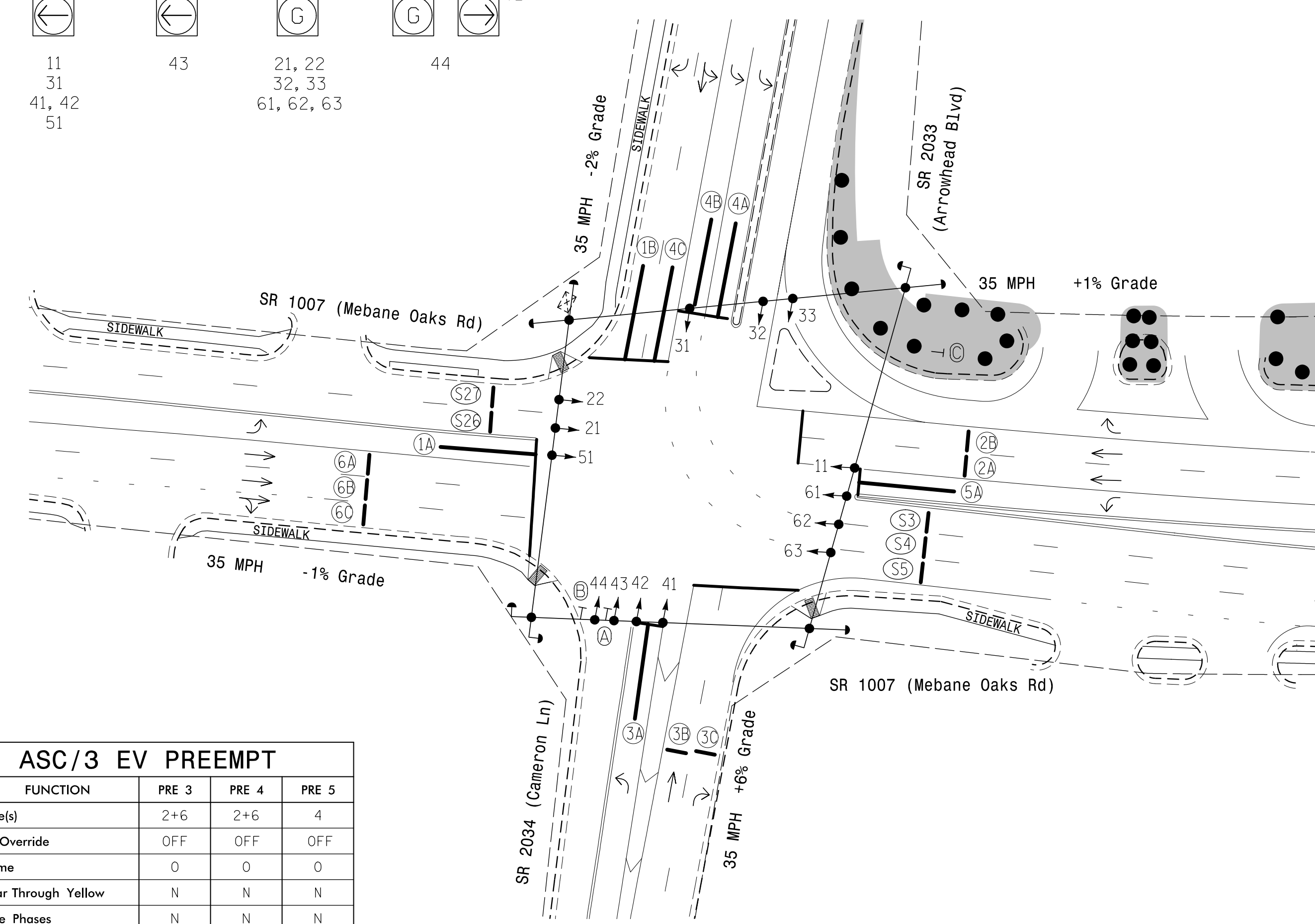
FEATURE	PHASE					
	1	2	3	4	5	6
Min Green *	7	10	7	7	7	10
Walk *	0	0	0	0	0	0
Ped Clear	0	0	0	0	0	0
Veh. Extension *	2.0	3.0	2.0	2.0	2.0	3.0
Max 1 *	30	60	15	50	15	60
Yellow	3.0	3.8	3.5	4.0	3.0	3.9
Red Clear	2.9	1.7	2.4	2.1	3.3	2.0
Red Revert	2.0	2.0	2.0	2.0	2.0	2.0
Actuations B4 Add *	-	-	-	-	-	-
Seconds / Actuation *	-	-	-	-	-	-
Max Initial *	-	-	-	-	1	-
Time Before Reduction *	-	-	-	-	-	-
Time To Reduce *	-	-	-	-	-	-
Minimum Gap	-	-	-	-	-	-
Locking Detector	-	X	-	-	-	X
Recall Position	-	VEH. RECALL	-	-	-	VEH. RECALL
Dual Entry	-	-	-	-	-	-
Simultaneous Gap	X	X	X	X	X	X

* These values may be field adjusted. Do not adjust Min Green and Extension times for phases 2 and 6 lower than what is shown. Min Green for all other phases should not be lower than 4 seconds.

ASC/3 EV PREEMPT

FUNCTION	PRE 3	PRE 4	PRE 5
Exit Phase(s)	2+6	2+6	4
Preempt Override	OFF	OFF	OFF
Delay Time	0	0	0
Ped Clear Through Yellow	N	N	N
Terminate Phases	N	N	N
Entrance Walk	255*	255*	255*
Entrance Ped Clear	255*	255*	255*
Entrance Min Green	1	1	1
Entrance Yellow Clear	25.5*	25.5*	25.5*
Entrance Red Clear	25.5*	25.5*	25.5*
Min Dwell Time	7	7	7
Preempt Input Extension Time	2	2	2
Preempt Max Time	120	120	120
Exit Yellow Clear	25.5*	25.5*	25.5*
Exit Red Clear	25.5*	25.5*	25.5*

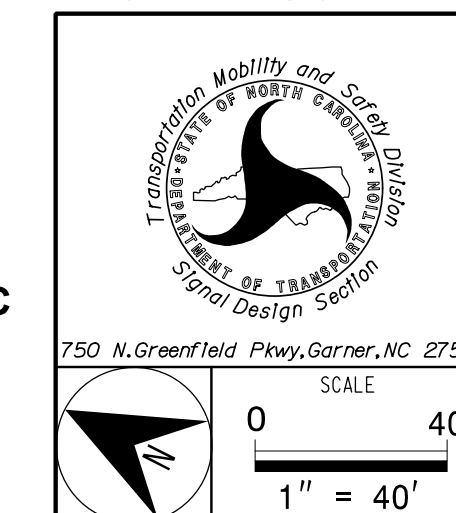
* Time defaults to time used for phase during normal operation



LEGEND

- | PROPOSED | EXISTING |
|---|---|
| ○ → Traffic Signal Head | ● → Traffic Signal Head |
| — Signal Pole with Guy | — Signal Pole with Guy |
| ○ → Signal Pole with Sidewalk Guy | ● → Signal Pole with Sidewalk Guy |
| ⊠ Controller & Cabinet | ⊠ Controller & Cabinet |
| □ Junction Box | □ Junction Box |
| — 2-in Underground Conduit | — 2-in Underground Conduit |
| N/A Right of Way | — Right of Way |
| → Directional Arrow | → Directional Arrow |
| ● Construction Zone Drums | ● Construction Zone Drums |
| ■ Construction Zone | ■ Construction Zone |
| — Video Detection Area | — Video Detection Area |
| N/A Curb Ramp | ▲ Curb Ramp |
| Ⓐ Combined Through and Left Arrow Sign (R3-6L) | Ⓐ Combined Through and Left Arrow Sign (R3-6L) |
| Ⓑ Right Arrow "ONLY" Sign (R3-5R) | Ⓑ Right Arrow "ONLY" Sign (R3-5R) |
| Ⓒ Added Lane Sign (W4-3) w/ "Free Flow Right Lane Keep Moving" Sign | Ⓒ Added Lane Sign (W4-3) w/ "Free Flow Right Lane Keep Moving" Sign |

(TMP Phase II)
Signal Upgrade - Temporary Design 2



SR 1007 (Mebane Oaks Road) at SR 2033 (Arrowhead Boulevard) and SR 2034 (Cameron Lane)
 Division 7 Alamance County Mebane
 PLAN DATE: November 2019 REVIEWED BY: Z. "Gavin" Teng
 PREPARED BY: Z. "Gavin" Teng REVIEWED BY:
 REVISIONS: INIT. DATE

DOCUMENT NOT CONSIDERED FINAL UNLESS ALL SIGNATURES COMPLETED
 SEAL
 CHAD LONG TENG
 PROFESSIONAL ENGINEER
 STATE OF NORTH CAROLINA
 LICENSE NO. 032179
 DATE: 12/17/2019
 SIG. INVENTORY NO. 07-2098T2

PREPARED IN THE OFFICE OF:
Accelerate Engineering, PLLC
 875 Walnut Street, Suite 316
 Cary, NC 27511
 Tel: 919.263.5678 Fax: 919.263.5687
 NC License No. P-1442

