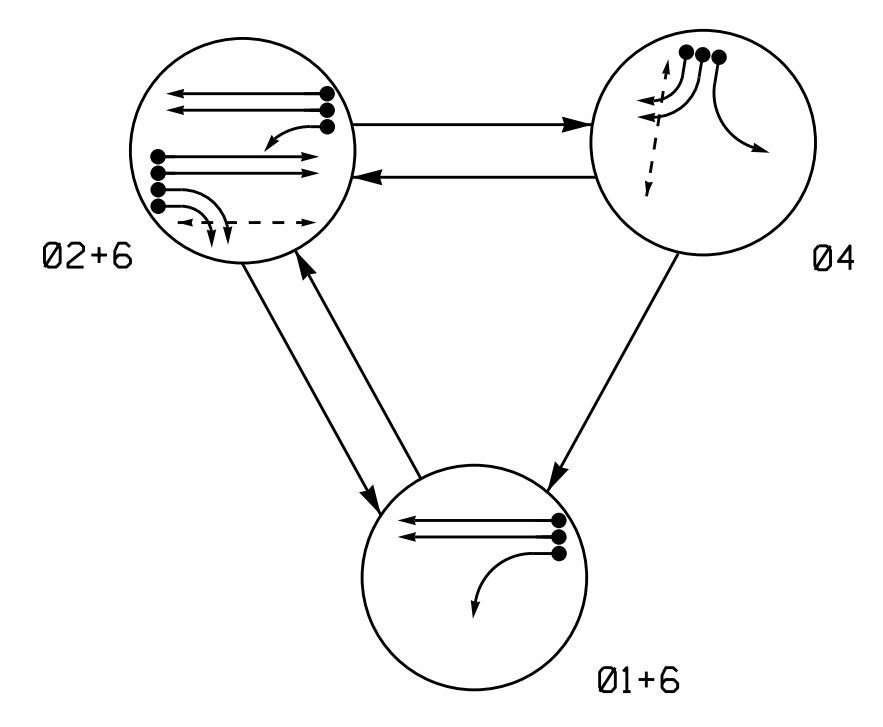
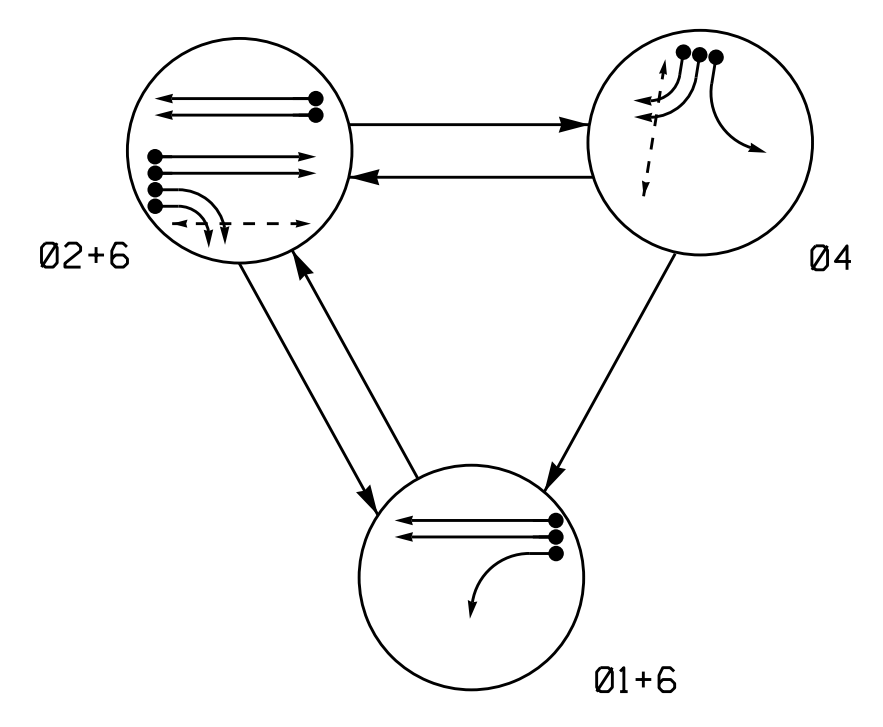


PHASING DIAGRAM



ALTERNATE PHASING DIAGRAM



PHASING DIAGRAM DETECTION LEGEND
 ● DETECTED MOVEMENT
 ○ UNDETECTED MOVEMENT (OVERLAP)
 - - - UNSIGNALIZED MOVEMENT
 - - - PEDESTRIAN MOVEMENT

TABLE OF OPERATION

SIGNAL FACE	PHASE			
	01+6	02+6	04	F L
11	-	-	-	-
21,22	R	G	R	Y
23,24	R	F	R	Y
41,42	-R	-R	-	-R
43,44	R	R	F	R
61,62	G	G	R	Y
P21,P22	DW	W	DW	DRK
P41,P42	DW	DW	W	DRK

ALTERNATE PHASING TABLE OF OPERATION

SIGNAL FACE	PHASE			
	01+6	02+6	04	F L
11	-	-R	-R	-Y
21,22	R	G	R	Y
23,24	R	F	R	Y
41,42	-R	-R	-	-R
43,44	R	R	F	R
61,62	G	G	R	Y
P21,P22	DW	W	DW	DRK
P41,P42	DW	DW	W	DRK

OASIS 2070 LOOP & DETECTOR INSTALLATION CHART

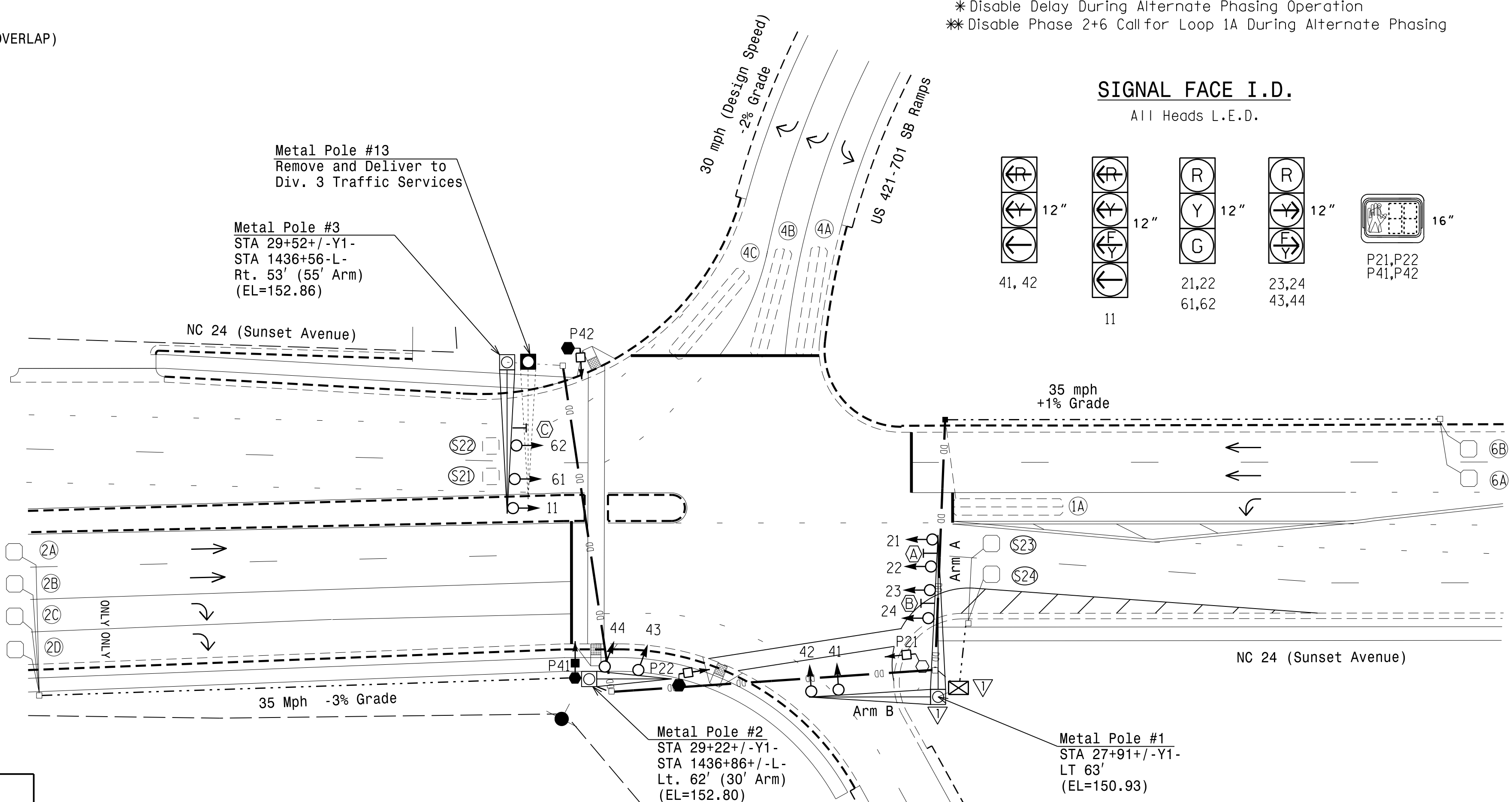
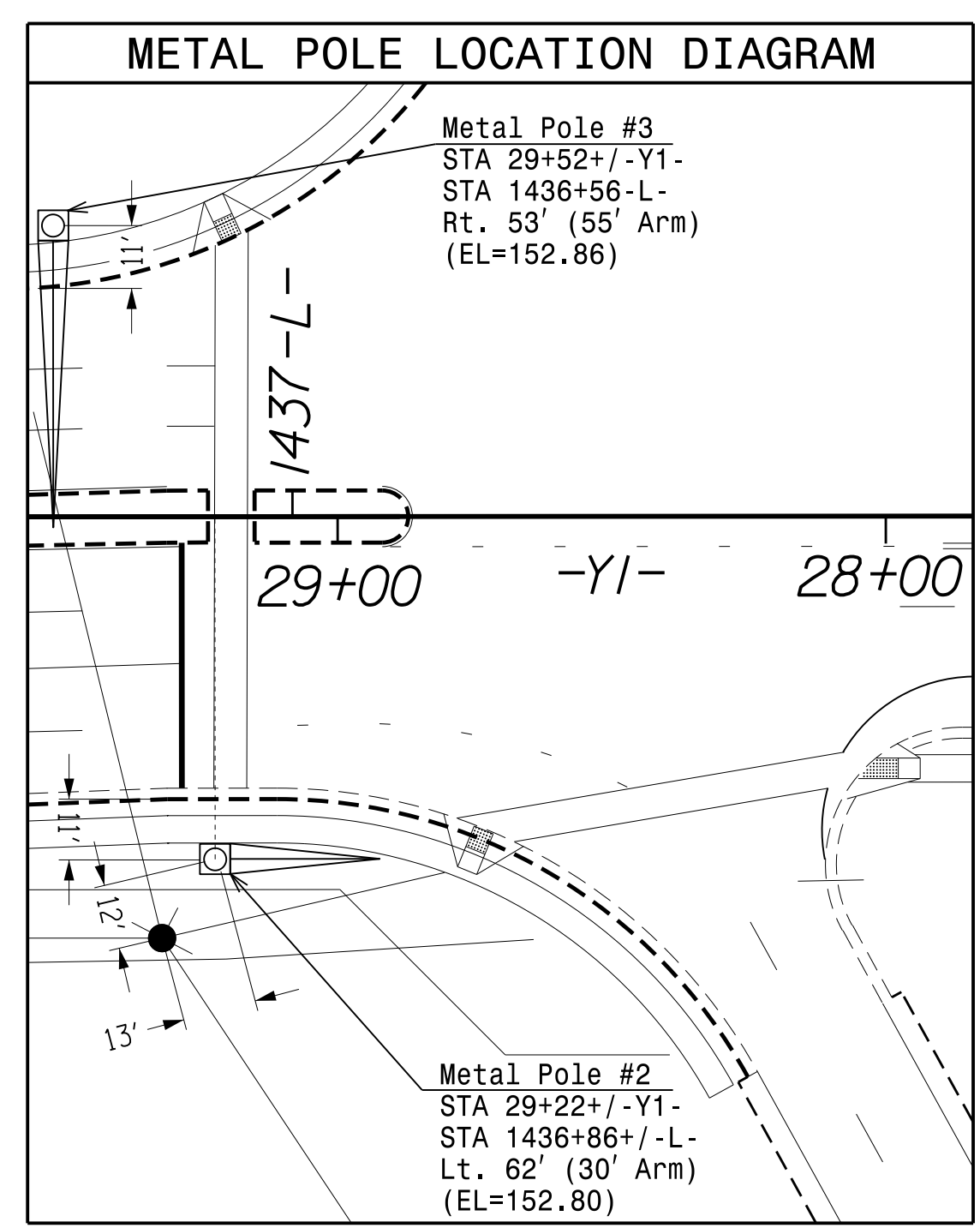
LOOP	SIZE (FT)	DISTANCE FROM STOPBAR (FT)	TURNS	NEW LOOP	DETECTOR PROGRAMMING				SYSTEM LOOP	NEW CARD	
					PHASE	CALLING	EXTENSION	STRETCH TIME			DELAY TIME
1A	6X40	0	2-4-2	Y	1	Y	Y	-	-	*15	-
2A,2B	6X6	200	4	Y	2	Y	Y	-	-	-	-
2C,2D	6X6	200	4	Y	2	Y	Y	-	-	-	-
4A	6X40	0	2-4-2	-	4	Y	Y	-	-	-	-
4B	6X40	0	2-4-2	-	4	Y	Y	-	-	10	-
4C	6X40	0	2-4-2	-	4	Y	Y	-	-	10	-
6A,6B	6X6	200	4	Y	6	Y	Y	-	-	-	-
S21	6X6	+150	4	-	-	-	-	-	-	-	Y
S22	6X6	+150	4	-	-	-	-	-	-	-	Y
S23	6X6	+150	4	Y	-	-	-	-	-	-	Y
S24	6X6	+150	4	Y	-	-	-	-	-	-	Y

* Disable Delay During Alternate Phasing Operation
 ** Disable Phase 2+6 Call for Loop 1A During Alternate Phasing

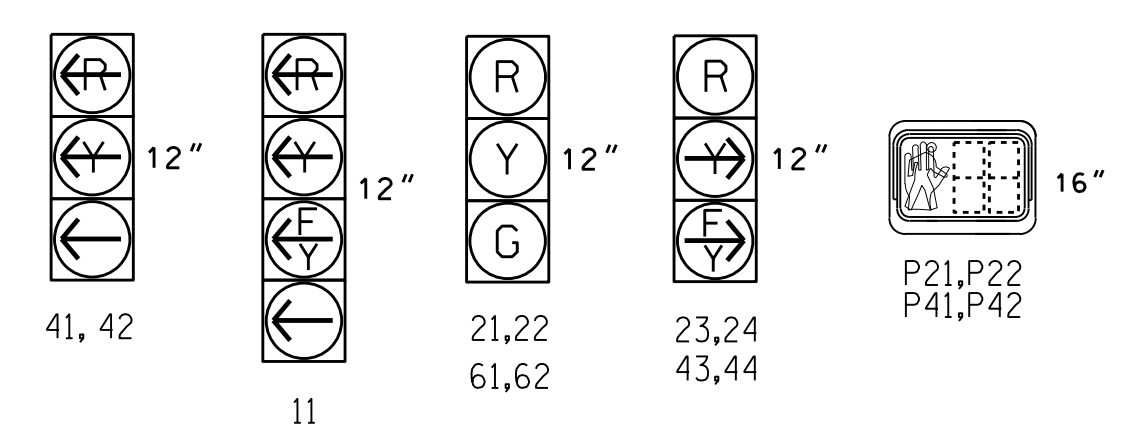
3 Phase Fully Actuated NC 24 (Sunset Avenue) CLS 10302

NOTES

- Refer to "Roadway Standard Drawings NCDOT" dated January 2018 and "Standard Specifications for Roads and Structures" dated January 2018.
- Do not program signal for late night flashing operation unless otherwise directed by the Engineer.
- Phase 1 may be lagged.
- Set all detector units to presence mode.
- Omit "WALK" and flashing "DON'T WALK" with no pedestrian calls.
- Program pedestrian heads to countdown the flashing "Don't Walk" time only.
- Maximum times shown in timing chart are for free-run operation only. Coordinated signal system timing values supersede these values.
- Closed loop system data: Controller Asset #: 1068.



SIGNAL FACE I.D.
 All Heads L.E.D.



OASIS 2070 TIMING CHART

FEATURE	PHASE			
	1	2	4	6
Min Green 1 *	7	10	7	10
Extension 1 *	2.0	6.0	2.0	6.0
Max Green 1 *	15	60	30	60
Yellow Clearance	3.0	4.1	3.3	4.1
Red Clearance	2.9	2.3	2.0	2.3
Walk 1 *	-	7	7	-
Don't Walk 1	-	15	26	-
Seconds Per Actuation *	-	1.5	-	1.5
Max Variable Initial *	-	24	-	24
Time Before Reduction *	-	10	-	10
Time To Reduce *	-	20	-	20
Minimum Gap	-	3.0	-	3.0
Recall Mode	-	MIN RECALL	-	MIN RECALL
Vehicle Call Memory	-	YELLOW	-	YELLOW
Dual Entry	-	-	-	-
Simultaneous Gap	ON	ON	ON	ON

* These values may be field adjusted. Do not adjust Min Green and Extension times for phases 2 and 6 lower than what is shown. Min Green for all other phases should not be lower than 4 seconds.

LEGEND

PROPOSED	EXISTING
○ Traffic Signal Head	● Traffic Signal Head
○ Modified Signal Head	N/A
□ Sign	□ Sign
○ Pedestrian Signal Head With Push Button & Sign	○ Pedestrian Signal Head
□ Signal Pole with Guy	□ Signal Pole with Guy
□ Signal Pole with Sidewalk Guy	□ Signal Pole with Sidewalk Guy
□ Inductive Loop Detector	□ Inductive Loop Detector
□ Controller & Cabinet	□ Controller & Cabinet
□ Junction Box	□ Junction Box
□ 2-in Underground Conduit	□ 2-in Underground Conduit
N/A	→ Right of Way
→ Directional Arrow	→ Directional Arrow
○ Directional Drill	○ Directional Drill
○ Type II Signal Pedestal	○ Type II Signal Pedestal
○ Metal Pole with Mastarm	○ Metal Pole with Mastarm
N/A	▭ Curb Ramp
(A) No U-Turn/Left Turn Sign (R3-18)	(A) No U-Turn/Left Turn Sign (R3-18)
(B) Right Arrow "ONLY" Sign (R3-5R)	(B) Right Arrow "ONLY" Sign (R3-5R)
(C) No Right Turn Sign (R3-1)	(C) No Right Turn Sign (R3-1)

Signal Upgrade

REVISION SEAL
 NORTH CAROLINA PROFESSIONAL ENGINEER
 SEAL 030530
 CHARLES M. LITTLE

Prepared for the Offices of:
 TRANSPORTATION MOBILITY AND SAFETY DIVISION
 NORTH CAROLINA DEPARTMENT OF TRANSPORTATION
 Signal Design Section
 750 N. Greenfield Pkwy, Garner, NC 27529

NC 24 (Sunset Avenue) at US 421-701/NC 24 SB Ramps
 Division 3 Sampson County Clinton
 PLAN DATE: Sep 2019 REVIEWED BY: D.J. Darity
 PREPARED BY: D.J. Darity MAN PROJECT NO.: 8522-07
 REVISIONS: Remove MP#14, Install MP#1 and Relocate Cabinet
 DATE: 11/02/2021

DOCUMENT NOT CONSIDERED FINAL UNLESS ALL SIGNATURES COMPLETED
 SEAL
 Not a certified document as to the Original Document but Only as to the Revisions - This document originally Issued and sealed by Donald J. Darity, NCPE 19713 on 9-12-2019
 This document is only certified as to the revisions.
 SIG. INVENTORY NO. 03-1068

MOFFATT & NICHOL
 4700 FALLS OF NEUSE ROAD, SUITE 300
 RALEIGH, NORTH CAROLINA 27609
 (919) 781-4626 VOICE (919) 781-4869 FAX
 NCPE LICENSE NO. F-10192

I:\03-1068-2021\08-12-SIGNAL\ASU\115-SIGNAL\Signal\Section\Eastern Region\01-03\03-1068-031068.asig.dgn, 2021mmcd.dgn
 Reference