

09, 08, 29

See Sheet 1A For Index of Sheets
See Sheet 1B For Conventional Plan Sheet Symbols
See Sheet 1C-1 For Survey Control Sheet

STATE OF NORTH CAROLINA DIVISION OF HIGHWAYS

T.I.P. NO.	SHEET NO.
I-5700	UO-1

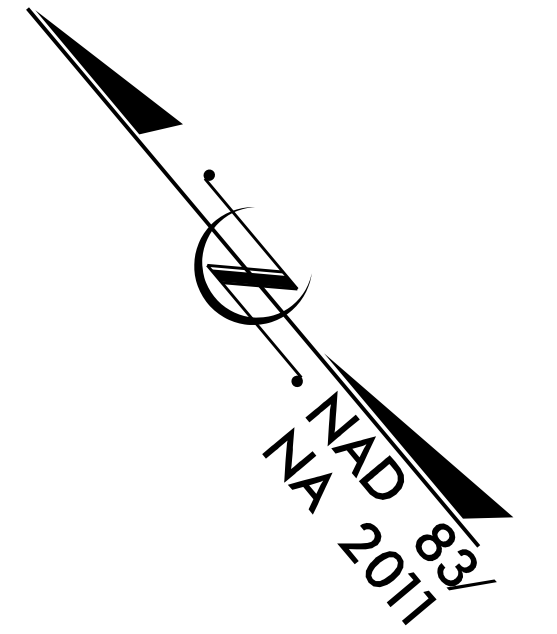
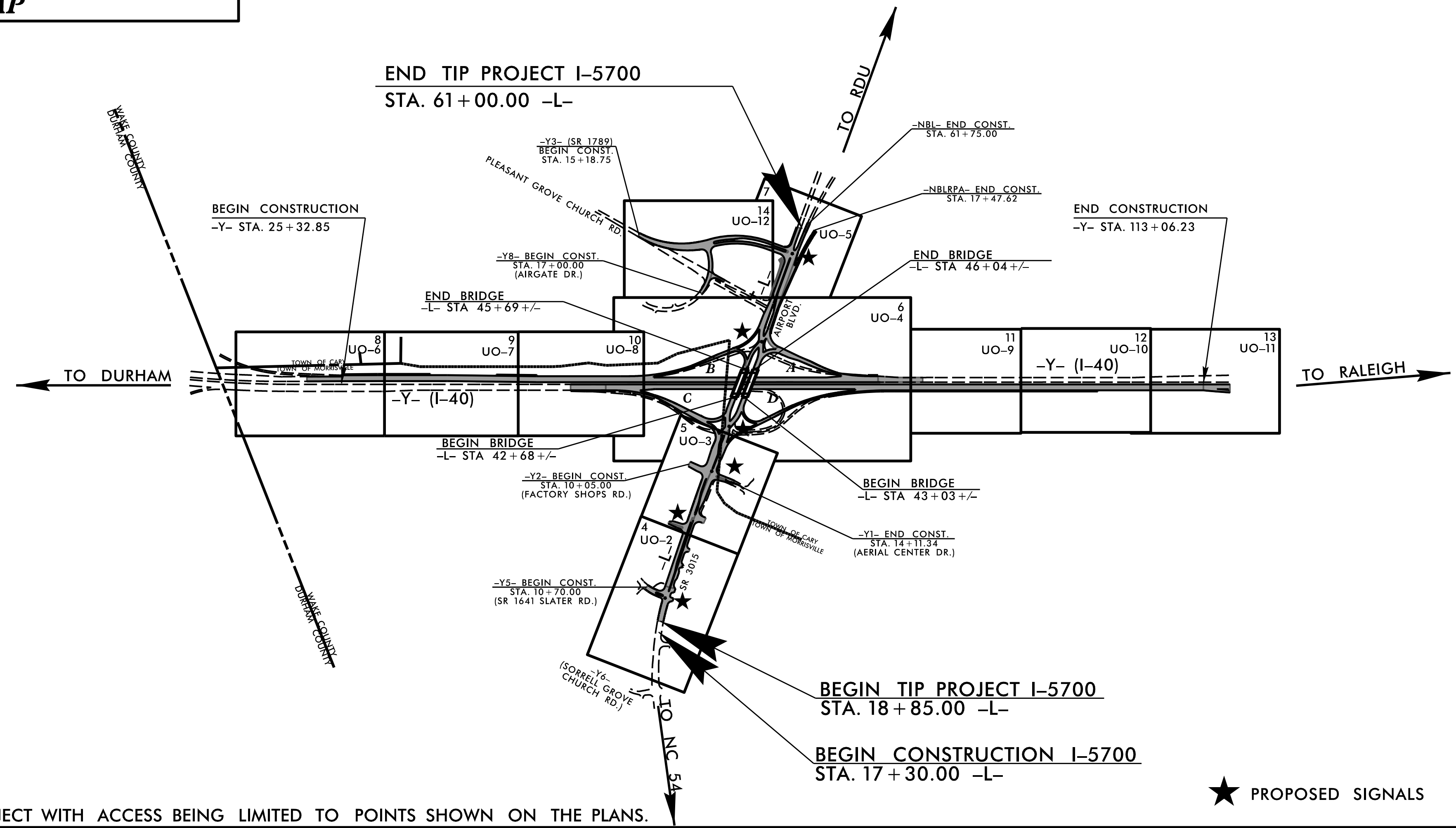
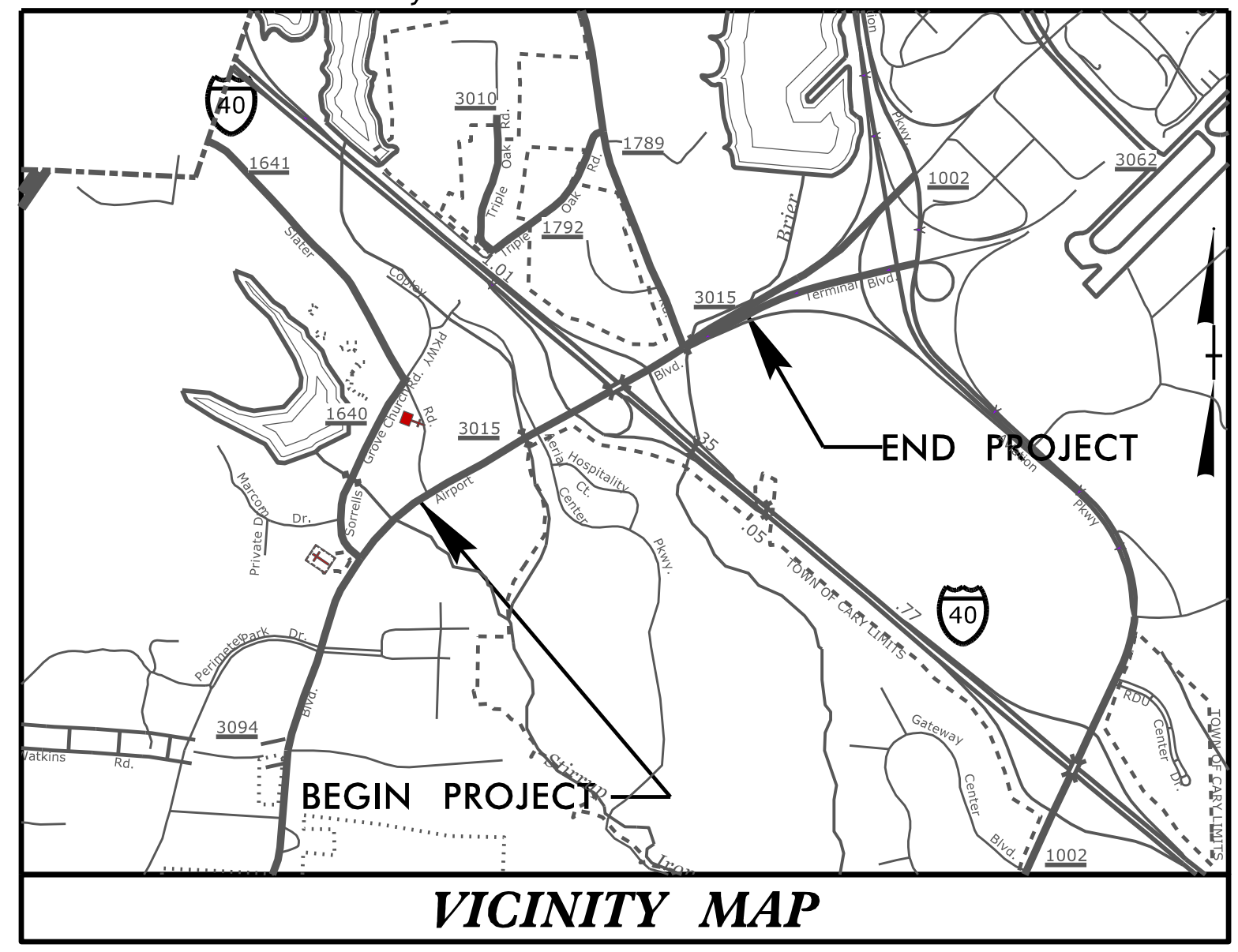
NOTE:
ALL UTILITY WORK SHOWN ON THIS SHEET WILL BE DONE BY OTHERS. NO PAYMENT WILL BE MADE TO THE CONTRACTOR FOR UTILITY WORK SHOWN ON THIS SHEET.

UTILITIES BY OTHERS PLANS WAKE COUNTY

LOCATION: I-40 AND SR 3015 (AIRPORT BLVD.), REVISE INTERCHANGE AND CONSTRUCT AUXILIARY LANE ON I-40 WESTBOUND FROM SR 3015 (AIRPORT BLVD.) TO I-540.

TYPE OF WORK: UTILITY RELOCATION

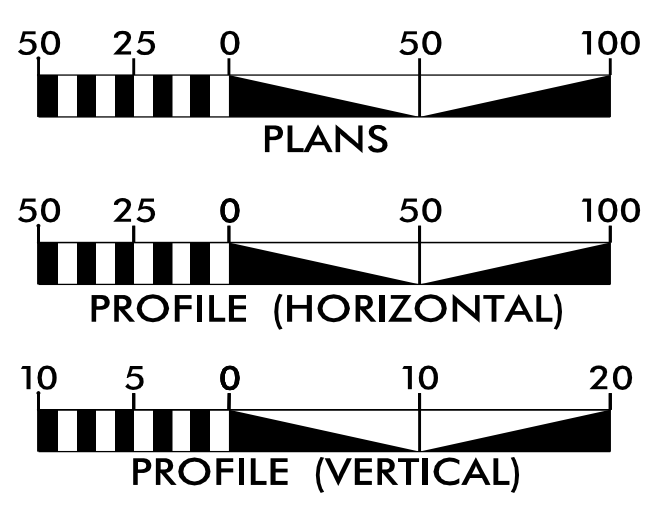
TIP PROJECT: I-5700



THIS IS A PARTIAL CONTROLLED- ACCESS PROJECT WITH ACCESS BEING LIMITED TO POINTS SHOWN ON THE PLANS.

★ PROPOSED SIGNALS

GRAPHIC SCALES



INDEX OF SHEETS

SHEET NO.:	DESCRIPTION:
UO-1	UBO TITLE SHEET
UO-2 THRU UO-12	UBO PLAN SHEETS

UTILITY OWNERS WITH CONFLICTS

- (A) POWER - DUKE ENERGY
- (B) COMMUNICATION - AT&T
- (C) COMMUNICATION - SPECTRUM
- (D) COMMUNICATION - SEGRASPIRIT
- (E) COMMUNICATION - CENTURYLINK
- (F) COMMUNICATION - CROWN CASTLE
- (G) COMMUNICATION - VERIZON
- (H) GAS - PSNC

PREPARED IN THE OFFICE OF:

1223 Jones Franklin Rd
Raleigh, N.C. 27606
License No. F-0377
Bus: 919 851 8077
Fax: 919 851 8107

TRANSPORTATION PLANNING/DESIGN - BRIDGE/STRUCTURE DESIGN
CIVIL/SITE DESIGN - GIS/GPS - CONSTRUCTION OBSERVATION

John D. Schriener, PLS UTILITY PROJECT MANAGER
Tyron Stallings PROJECT UTILITY COORDINATOR

DIVISION OF HIGHWAYS
UTILITIES UNIT
1555 MAIL SERVICES CENTER
RALEIGH, NC 27699-1555
PHONE (919) 707-6690
FAX (919) 250-4151

Tucker Martin, PE	UTILITIES REGIONAL ENGINEER
Ali Kouchehi, PE	UTILITIES ENGINEER
Dayton Martin	UTILITIES AREA COORDINATOR
O'hara Parker	UTILITIES COORDINATOR

\$\$\$\$\$ SYSTEM \$\$\$\$\$\$
\$\$\$\$\$ CDON \$\$\$\$\$\$
\$\$\$\$\$ USERNAME \$\$\$\$\$\$

UTILITIES BY OTHERS

ALL PROPOSED UTILITY WORK SHOWN ON THIS SHEET WILL BE DONE BY OTHERS. NO PAYMENT WILL BE MADE TO THE CONTRACTOR FOR PROPOSED UTILITY WORK SHOWN ON THIS SHEET.

WETHERILL ENGINEERING
 1223 Jones Franklin Rd.
 Raleigh, N.C. 27606
 License No. F-03777
 Bus: 919 851 8077
 Fax: 919 851 8107

TRANSPORTATION PLANNING/DESIGN - BRIDGE/STRUCTURE DESIGN
 CIVIL/SITE DESIGN - GIS/GPS - CONSTRUCTION OBSERVATION

O/H POWER - DUKE ENERGY
 O/H COMMUNICATION - SPECTRUM
 O/H COMMUNICATION - CROWN CASTLE
 O/H COMMUNICATION - AT&T
 O/H COMMUNICATION - CENTURYLINK
 O/H COMMUNICATION - VERIZON

1 TIED TO EXISTING U/G COMMUNICATION (SPECTRUM)

TIED TO EXISTING U/G GAS (DOMINION ENERGY)

TRANSITION TO O/H COMMUNICATION (CENTURY LINK)

TIED TO EXISTING U/G GAS (DOMINION ENERGY)

TIED TO EXISTING U/G COMMUNICATION (AT&T)

TIED TO EXISTING U/G COMMUNICATION (CROWN CASTLE)

U/G COMMUNICATION (AT&T)

U/G COMMUNICATION (CENTURY LINK)

U/G GAS (DOMINION ENERGY)

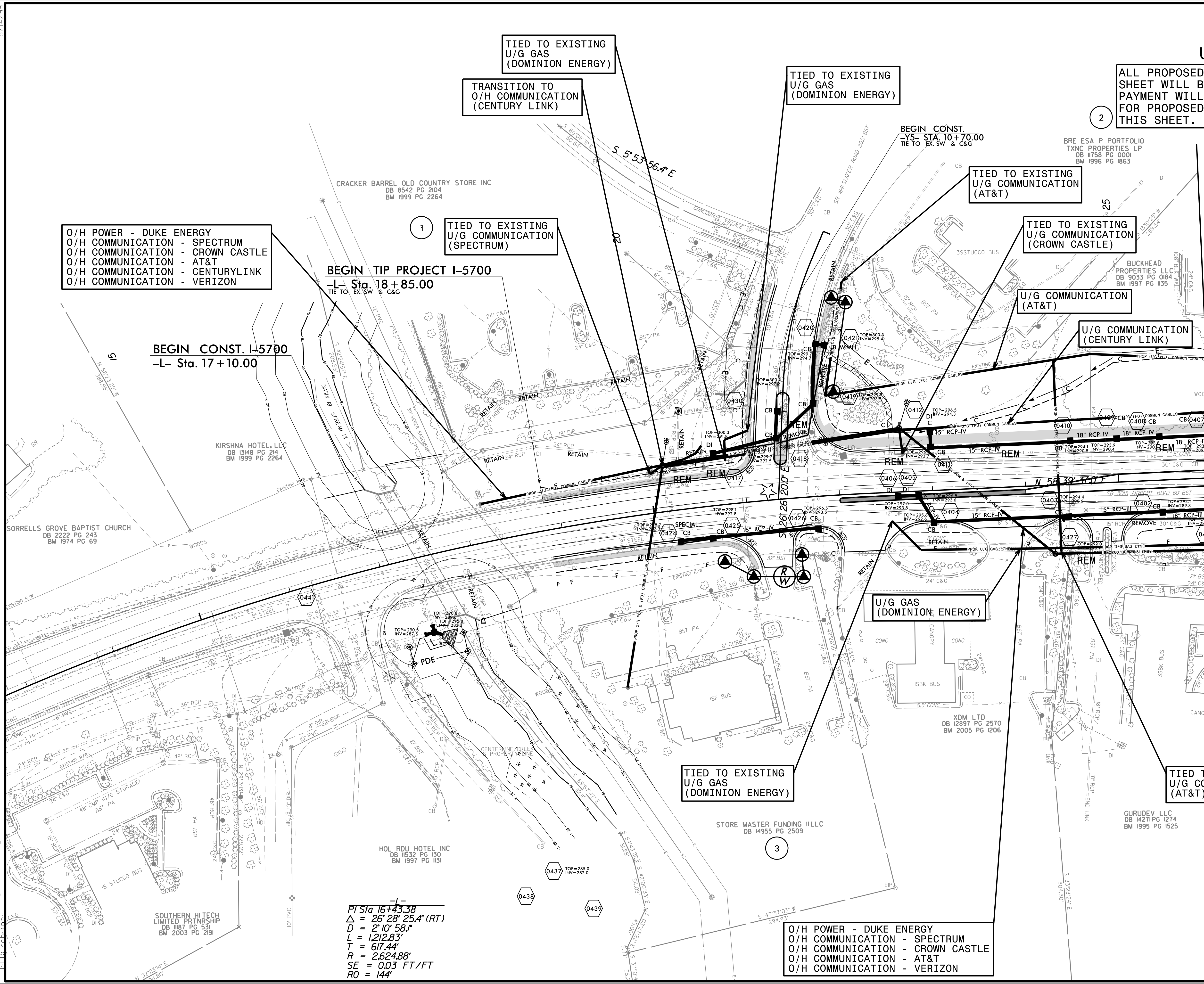
TIED TO EXISTING U/G GAS (DOMINION ENERGY)

TIED TO EXISTING U/G COMMUNICATION (AT&T)

O/H POWER - DUKE ENERGY
 O/H COMMUNICATION - SPECTRUM
 O/H COMMUNICATION - CROWN CASTLE
 O/H COMMUNICATION - AT&T
 O/H COMMUNICATION - VERIZON

PROF CONC SIDEWALK
 PROPOSED TRAFFIC SIGNAL

SEE SHTS. 15 & 16 FOR -L- PROFILE
 SEE SHT. 19 FOR -Y5- PROFILE
 SEE SHT. 2D-1 FOR DRAINAGE DETAILS



BEGIN CONST. I-5700
 -L- Sta. 17+10.00

BEGIN TIP PROJECT I-5700
 -L- Sta. 18+85.00
 TIE TO EX. SW & C&G

BEGIN CONST. -Y5- STA. 10+70.00
 TIE TO EX. SW & C&G

PI Sta 16+43.38
 $\Delta = 26' 28" 25.4" (RT)$
 $D = 2' 10" 58.1"$
 $L = 1,212.83'$
 $T = 617.44'$
 $R = 2,624.88'$
 $SE = 0.03 FT/FT$
 $RO = 144'$



MATCHLINE -L- STA. 26+00.00 SEE SHT. UO-3

5/14/99
23-1-19/02
ISIFB: schubert

UTILITIES BY OTHERS

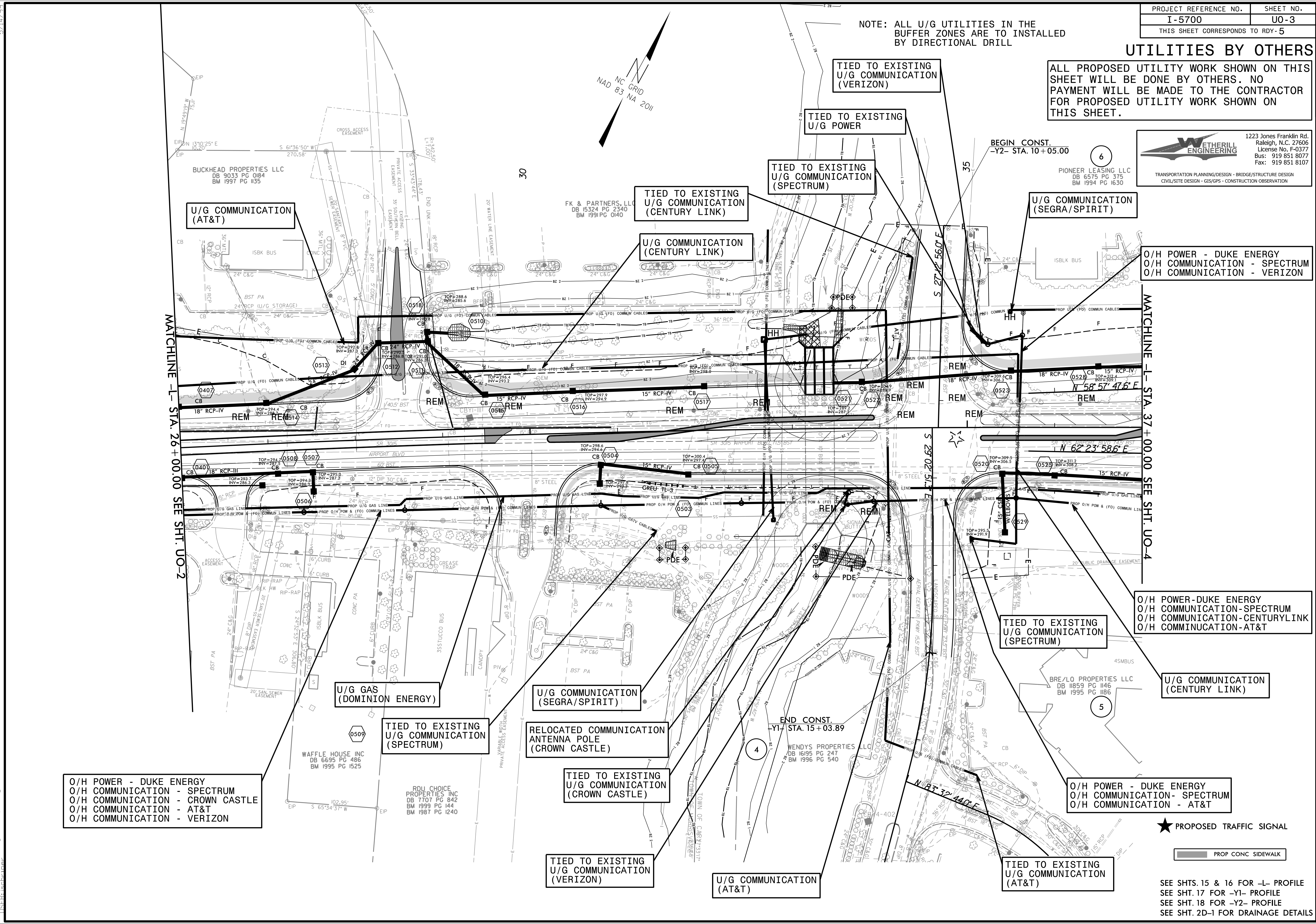
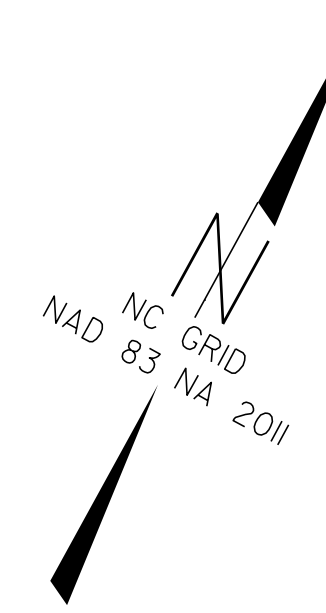
ALL PROPOSED UTILITY WORK SHOWN ON THIS SHEET WILL BE DONE BY OTHERS. NO PAYMENT WILL BE MADE TO THE CONTRACTOR FOR PROPOSED UTILITY WORK SHOWN ON THIS SHEET.



1223 Jones Franklin Rd.
Raleigh, N.C. 27606
License No. F-03777
Bus: 919 851 8077
Fax: 919 851 8107

TRANSPORTATION PLANNING/DESIGN - BRIDGE/STRUCTURE DESIGN
CIVIL/SITE DESIGN - GIS/GPS - CONSTRUCTION OBSERVATION

NOTE: ALL U/G UTILITIES IN THE BUFFER ZONES ARE TO BE INSTALLED BY DIRECTIONAL DRILL



U/G COMMUNICATION (AT&T)

TIED TO EXISTING U/G COMMUNICATION (CENTURY LINK)

TIED TO EXISTING U/G COMMUNICATION (VERIZON)

TIED TO EXISTING U/G POWER

TIED TO EXISTING U/G COMMUNICATION (SPECTRUM)

U/G COMMUNICATION (SEGRA/SPIRIT)

O/H POWER - DUKE ENERGY
O/H COMMUNICATION - SPECTRUM
O/H COMMUNICATION - VERIZON

U/G COMMUNICATION (CENTURY LINK)

MATCHLINE -L- STA. 26 + 00.00 SEE SHT. U0-2

MATCHLINE -L- STA. 37 + 00.00 SEE SHT. U0-4

O/H POWER - DUKE ENERGY
O/H COMMUNICATION - SPECTRUM
O/H COMMUNICATION - CROWN CASTLE
O/H COMMUNICATION - AT&T
O/H COMMUNICATION - VERIZON

U/G GAS (DOMINION ENERGY)

TIED TO EXISTING U/G COMMUNICATION (SPECTRUM)

U/G COMMUNICATION (SEGRA/SPIRIT)

RELOCATED COMMUNICATION ANTENNA POLE (CROWN CASTLE)

TIED TO EXISTING U/G COMMUNICATION (CROWN CASTLE)

TIED TO EXISTING U/G COMMUNICATION (VERIZON)

U/G COMMUNICATION (AT&T)

TIED TO EXISTING U/G COMMUNICATION (SPECTRUM)

O/H POWER - DUKE ENERGY
O/H COMMUNICATION - SPECTRUM
O/H COMMUNICATION - CENTURY LINK
O/H COMMUNICATION - AT&T

U/G COMMUNICATION (CENTURY LINK)

O/H POWER - DUKE ENERGY
O/H COMMUNICATION - SPECTRUM
O/H COMMUNICATION - AT&T

TIED TO EXISTING U/G COMMUNICATION (AT&T)

★ PROPOSED TRAFFIC SIGNAL

PROP CONC SIDEWALK

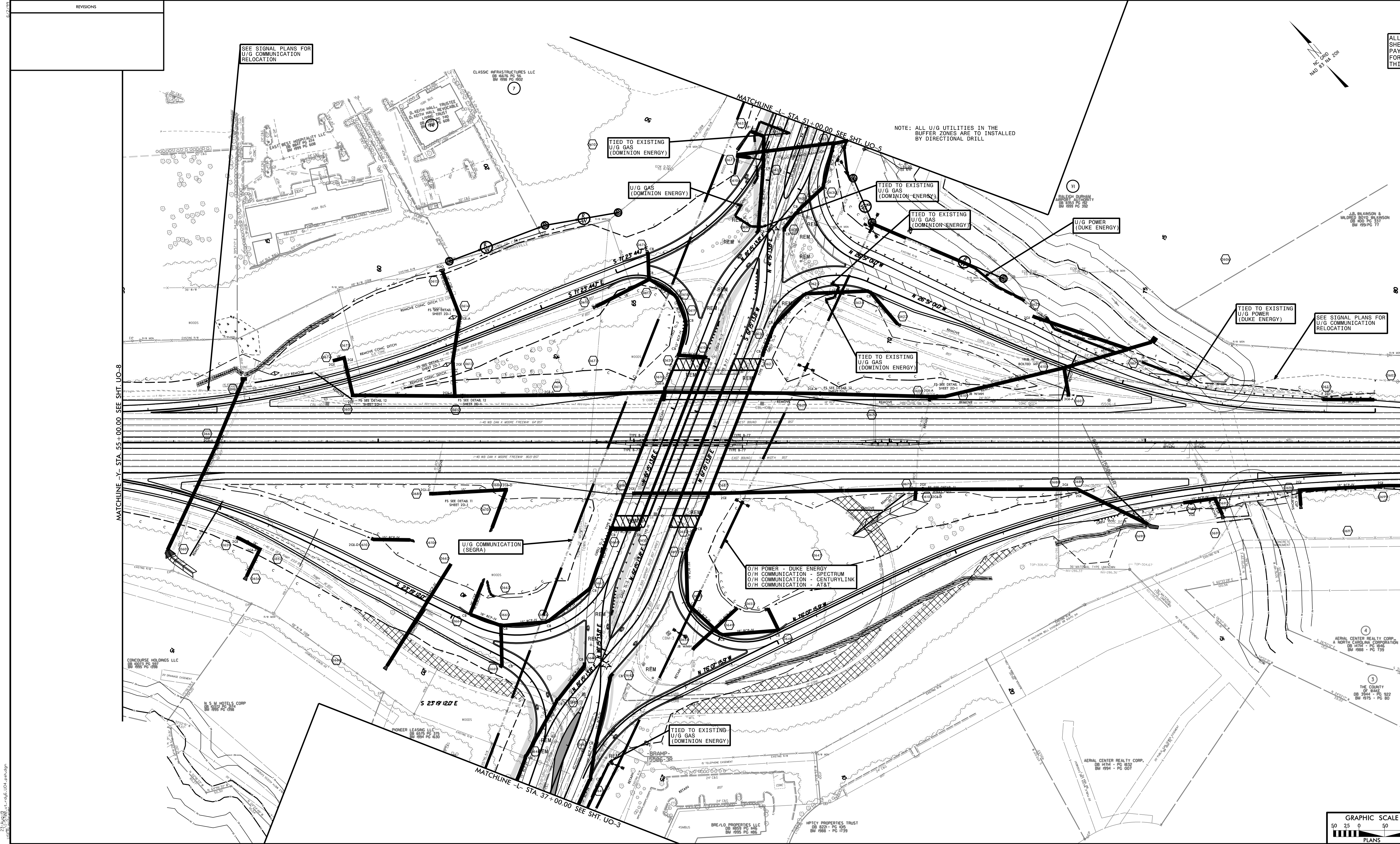
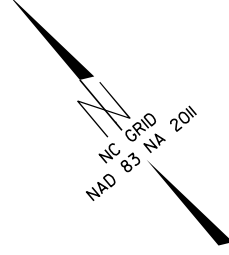
SEE SHTS. 15 & 16 FOR -L- PROFILE
SEE SHT. 17 FOR -Y1- PROFILE
SEE SHT. 18 FOR -Y2- PROFILE
SEE SHT. 2D-1 FOR DRAINAGE DETAILS

5/14/09 23:19:08 ut_rdy5_U03_psh.dgn

NO.	REVISIONS

PROJECT REFERENCE NO.	1-5700
SHEET NO.	00-4
THIS SHEET CORRESPONDS TO RDT-6	

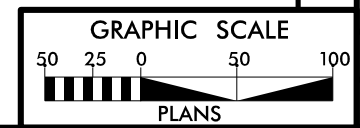
UTILITIES BY OTHERS
 ALL PROPOSED UTILITY WORK SHOWN ON THIS SHEET WILL BE DONE BY OTHERS. NO PAYMENT WILL BE MADE TO THE CONTRACTOR FOR PROPOSED UTILITY WORK SHOWN ON THIS SHEET.



NOTE: ALL U/G UTILITIES IN THE BUFFER ZONES ARE TO BE INSTALLED BY DIRECTIONAL DRILL

- ★ PROPOSED TRAFFIC SIGNAL
- ▬ PROP CONC SIDEWALK
- ▨ PAVEMENT REMOVAL

SEE SHTS 15 & 16 FOR -L- PROFILE
 SEE SHTS 20 THRU 23 FOR -Y- PROFILE
 SEE SHT. 24 FOR -RPA- PROFILE
 SEE SHT. 24 FOR -RFB- PROFILE
 SEE SHT. 25 FOR -RPC- PROFILE
 SEE SHTS 25 & 26 FOR -RPD- PROFILE
 SEE SHT. 26 FOR -RPA+P- PROFILE
 SEE SHT. 26 FOR -RFB+P- PROFILE
 SEE SHT. 26 FOR -RPC+P- PROFILE
 SEE SHT. 26 FOR -RPS+P- PROFILE
 SEE SHT. 26 FOR -RPS+P- PROFILE
 SEE SHT. 2D-1 FOR DRAINAGE DETAILS



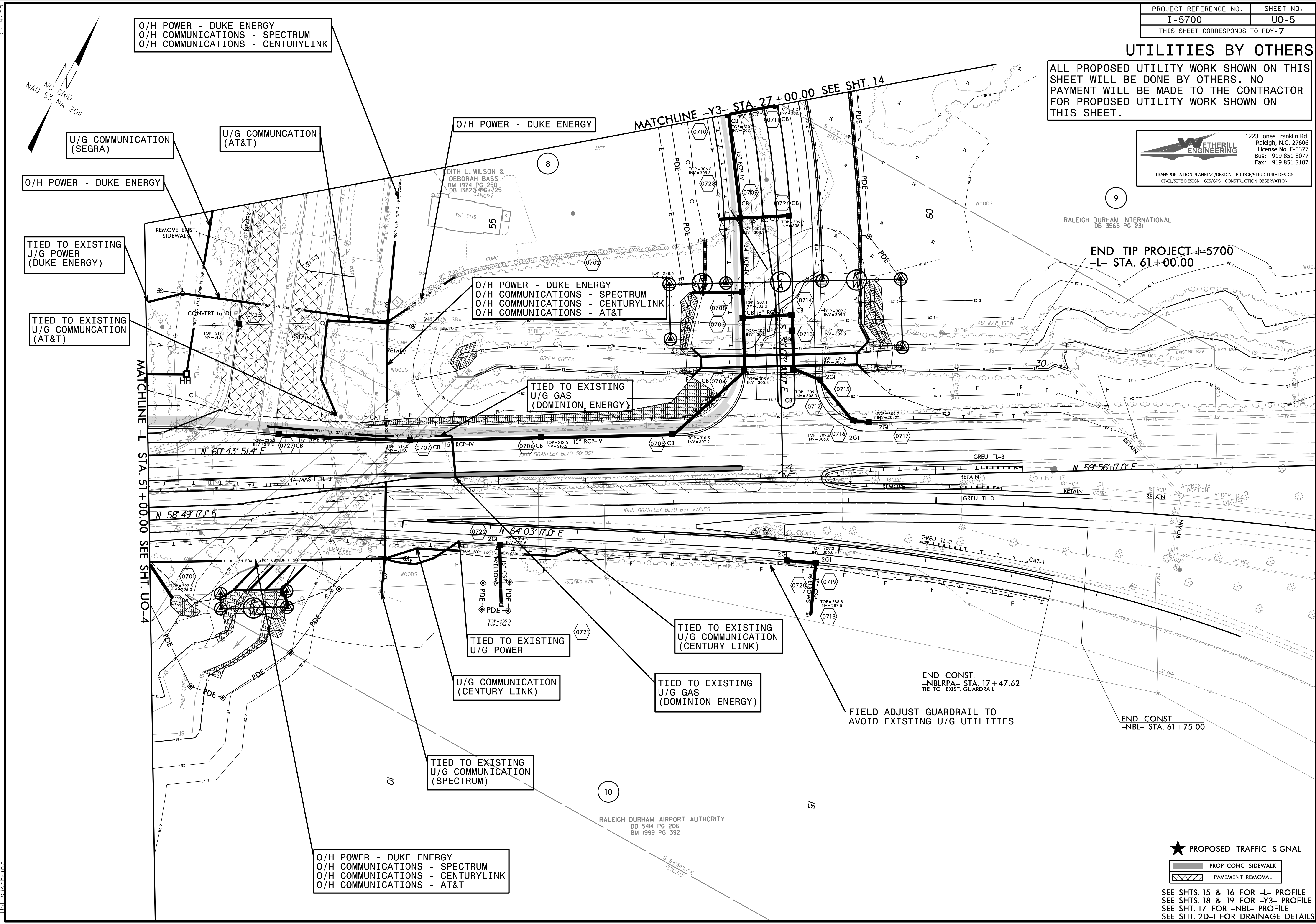
LOCATION: SR 2015 (AIRPORT BLVD) WITH I-40
TP NO. 1-5700
COUNTY: WAKE
DESIGNED BY:
CHECKED BY:
DATE:

UTILITIES BY OTHERS

ALL PROPOSED UTILITY WORK SHOWN ON THIS SHEET WILL BE DONE BY OTHERS. NO PAYMENT WILL BE MADE TO THE CONTRACTOR FOR PROPOSED UTILITY WORK SHOWN ON THIS SHEET.

WETHERILL ENGINEERING
 1223 Jones Franklin Rd.
 Raleigh, N.C. 27606
 License No. F-03771
 Bus: 919 851 8077
 Fax: 919 851 8107

TRANSPORTATION PLANNING/DESIGN - BRIDGE/STRUCTURE DESIGN
 CIVIL/SITE DESIGN - GIS/GPS - CONSTRUCTION OBSERVATION



MATCHLINE -L- STA. 51+00.00 SEE SHT. U0-4

MATCHLINE -Y3- STA. 27+00.00 SEE SHT. 14

END TIP PROJECT I-5700
 -L- STA. 61+00.00

END CONST.
 -NBLRPA- STA. 17+47.62
 TIE TO EXIST. GUARDRAIL

END CONST.
 -NBL- STA. 61+75.00

FIELD ADJUST GUARDRAIL TO
 AVOID EXISTING U/G UTILITIES

★ PROPOSED TRAFFIC SIGNAL

▬ PROP CONC SIDEWALK

▨ PAVEMENT REMOVAL

SEE SHTS. 15 & 16 FOR -L- PROFILE
 SEE SHTS. 18 & 19 FOR -Y3- PROFILE
 SEE SHT. 17 FOR -NBL- PROFILE
 SEE SHT. 2D-1 FOR DRAINAGE DETAILS

5/14/99
 23-1-19/08
 I:\SF\scb\rdy7_u05_psh.dgn

MATCHLINE -L- STA. 51+00.00 SEE SHT. U0-4

MATCHLINE -Y3- STA. 27+00.00 SEE SHT. 14

END TIP PROJECT I-5700
 -L- STA. 61+00.00

END CONST.
 -NBLRPA- STA. 17+47.62
 TIE TO EXIST. GUARDRAIL

END CONST.
 -NBL- STA. 61+75.00

FIELD ADJUST GUARDRAIL TO
 AVOID EXISTING U/G UTILITIES

★ PROPOSED TRAFFIC SIGNAL

▬ PROP CONC SIDEWALK

▨ PAVEMENT REMOVAL

SEE SHTS. 15 & 16 FOR -L- PROFILE
 SEE SHTS. 18 & 19 FOR -Y3- PROFILE
 SEE SHT. 17 FOR -NBL- PROFILE
 SEE SHT. 2D-1 FOR DRAINAGE DETAILS

5/14/99
 23-1-19/08
 I:\SF\scb\rdy7_u05_psh.dgn

UTILITIES BY OTHERS

ALL PROPOSED UTILITY WORK SHOWN ON THIS SHEET WILL BE DONE BY OTHERS. NO PAYMENT WILL BE MADE TO THE CONTRACTOR FOR PROPOSED UTILITY WORK SHOWN ON THIS SHEET.

WETHERILL ENGINEERING
 1223 Jones Franklin Rd.
 Raleigh, N.C. 27606
 License No. F-0377
 Bus: 919 851 8077
 Fax: 919 851 8107

TRANSPORTATION PLANNING/DESIGN - BRIDGE/STRUCTURE DESIGN
 CIVIL/SITE DESIGN - GIS/GPS - CONSTRUCTION OBSERVATION

NOTE: ALL U/G UTILITIES IN THE BUFFER ZONES ARE TO BE INSTALLED BY DIRECTIONAL DRILL

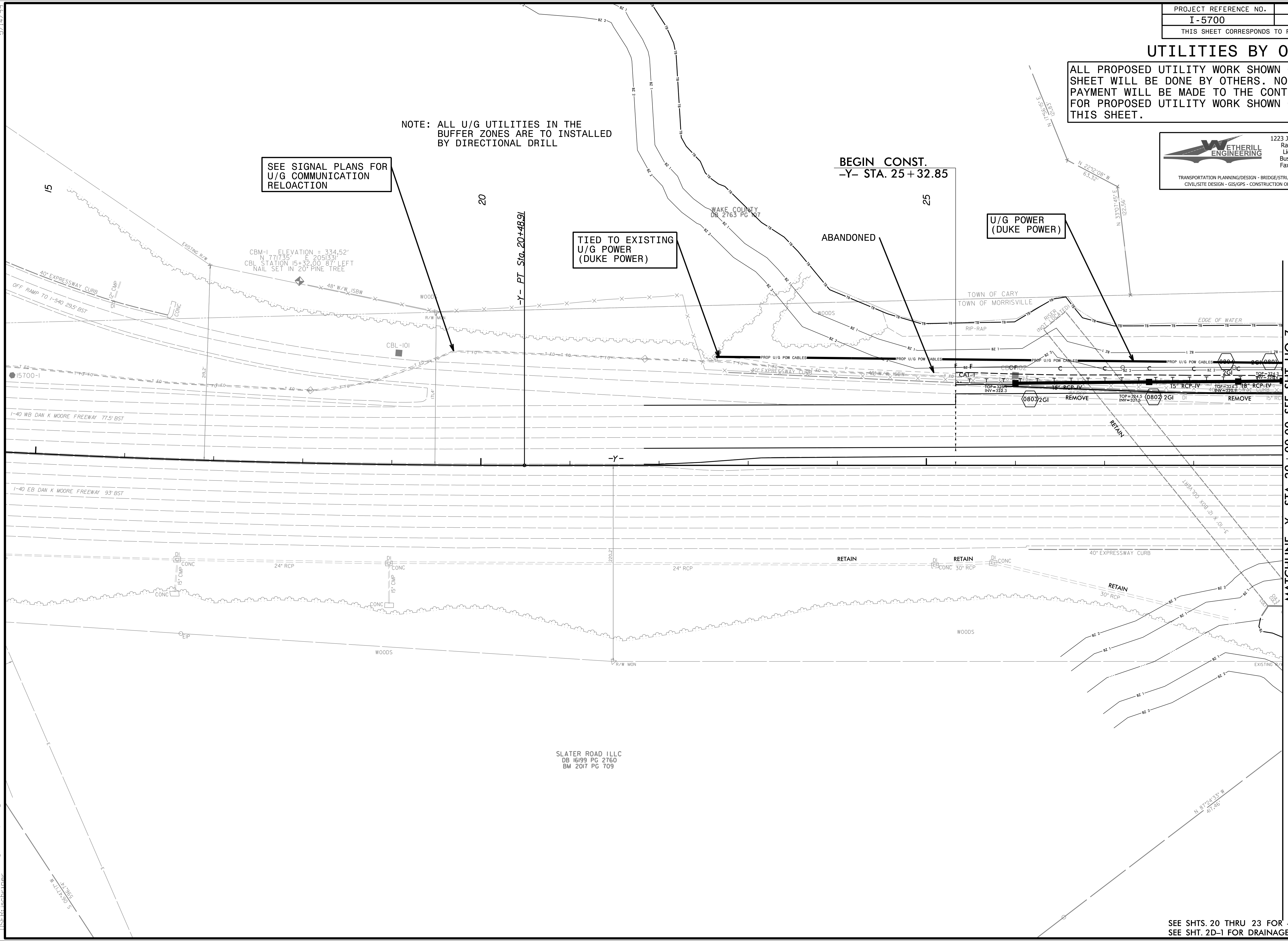
SEE SIGNAL PLANS FOR U/G COMMUNICATION RELOCATION

TIED TO EXISTING U/G POWER (DUKE POWER)

BEGIN CONST. -Y- STA. 25+32.85

U/G POWER (DUKE POWER)

MATCHLINE -Y- STA. 29+00.00 SEE SHT. U0-7



5/14/99
 23-1-19-08 ut_rdy8_U06_psh.dgn
 USFB_schmeyer

PROJECT REFERENCE NO.	SHEET NO.
I-5700	U0-7
THIS SHEET CORRESPONDS TO RDY-9	

UTILITIES BY OTHERS

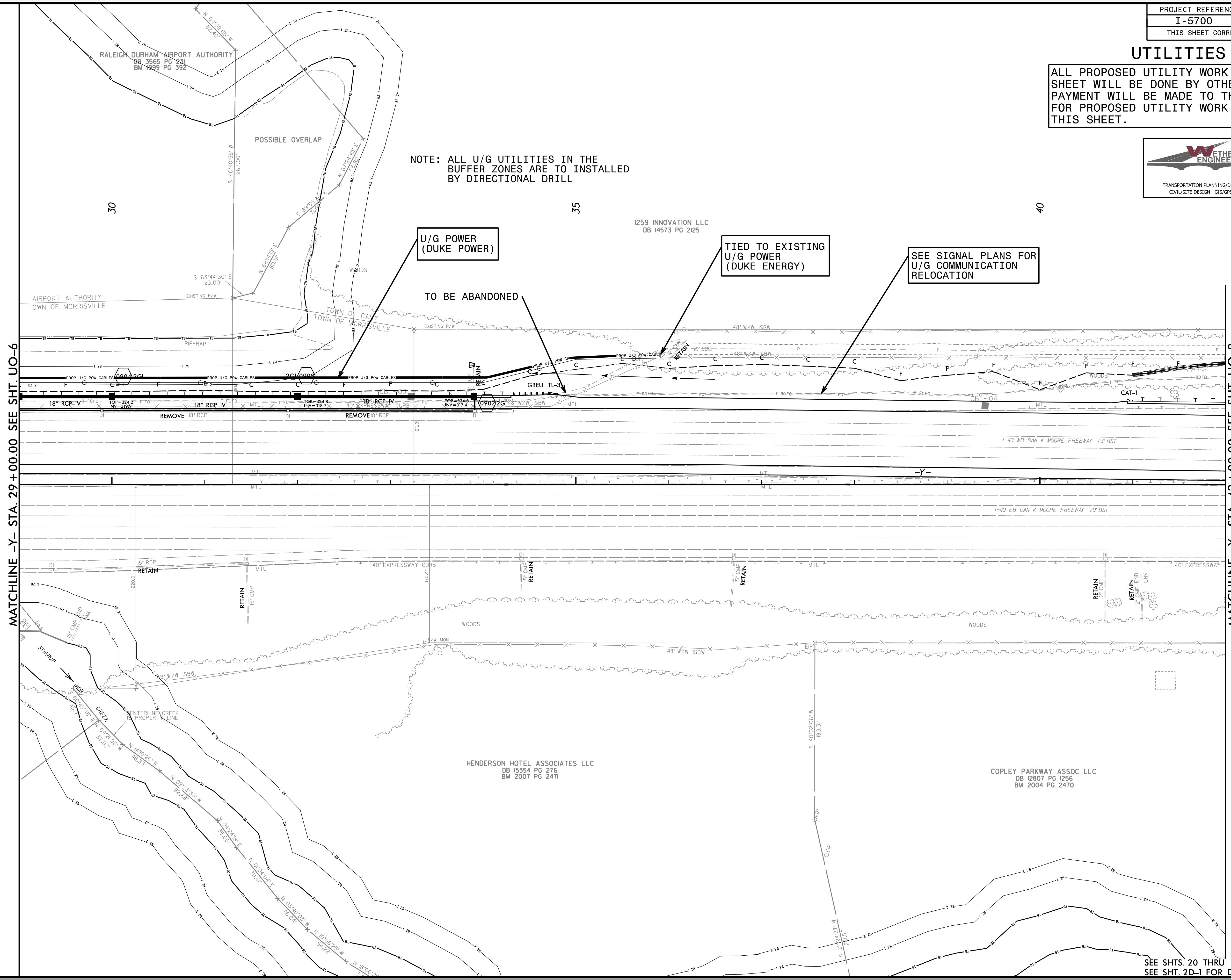
ALL PROPOSED UTILITY WORK SHOWN ON THIS SHEET WILL BE DONE BY OTHERS. NO PAYMENT WILL BE MADE TO THE CONTRACTOR FOR PROPOSED UTILITY WORK SHOWN ON THIS SHEET.



1223 Jones Franklin Rd.
Raleigh, N.C. 27606
License No. F-03777
Bus: 919 851 8077
Fax: 919 851 8107

TRANSPORTATION PLANNING/DESIGN - BRIDGE/STRUCTURE DESIGN
CIVIL/SITE DESIGN - GIS/GPS - CONSTRUCTION OBSERVATION

NOTE: ALL U/G UTILITIES IN THE BUFFER ZONES ARE TO BE INSTALLED BY DIRECTIONAL DRILL



U/G POWER (DUKE POWER)

TIED TO EXISTING U/G POWER (DUKE ENERGY)

SEE SIGNAL PLANS FOR U/G COMMUNICATION RELOCATION

TO BE ABANDONED

MATCHLINE -Y- STA. 29 + 00.00 SEE SHT. U0-6

MATCHLINE -Y- STA. 42 + 00.00 SEE SHT. U0-8

23-1-19-08 ut_rdy_9_U07_psh.dgn
15:58:30
J.S.F.

SEE SHTS. 20 THRU 23 FOR -Y- PROFILE
SEE SHT. 2D-1 FOR DRAINAGE DETAILS

UTILITIES BY OTHERS

ALL PROPOSED UTILITY WORK SHOWN ON THIS SHEET WILL BE DONE BY OTHERS. NO PAYMENT WILL BE MADE TO THE CONTRACTOR FOR PROPOSED UTILITY WORK SHOWN ON THIS SHEET.

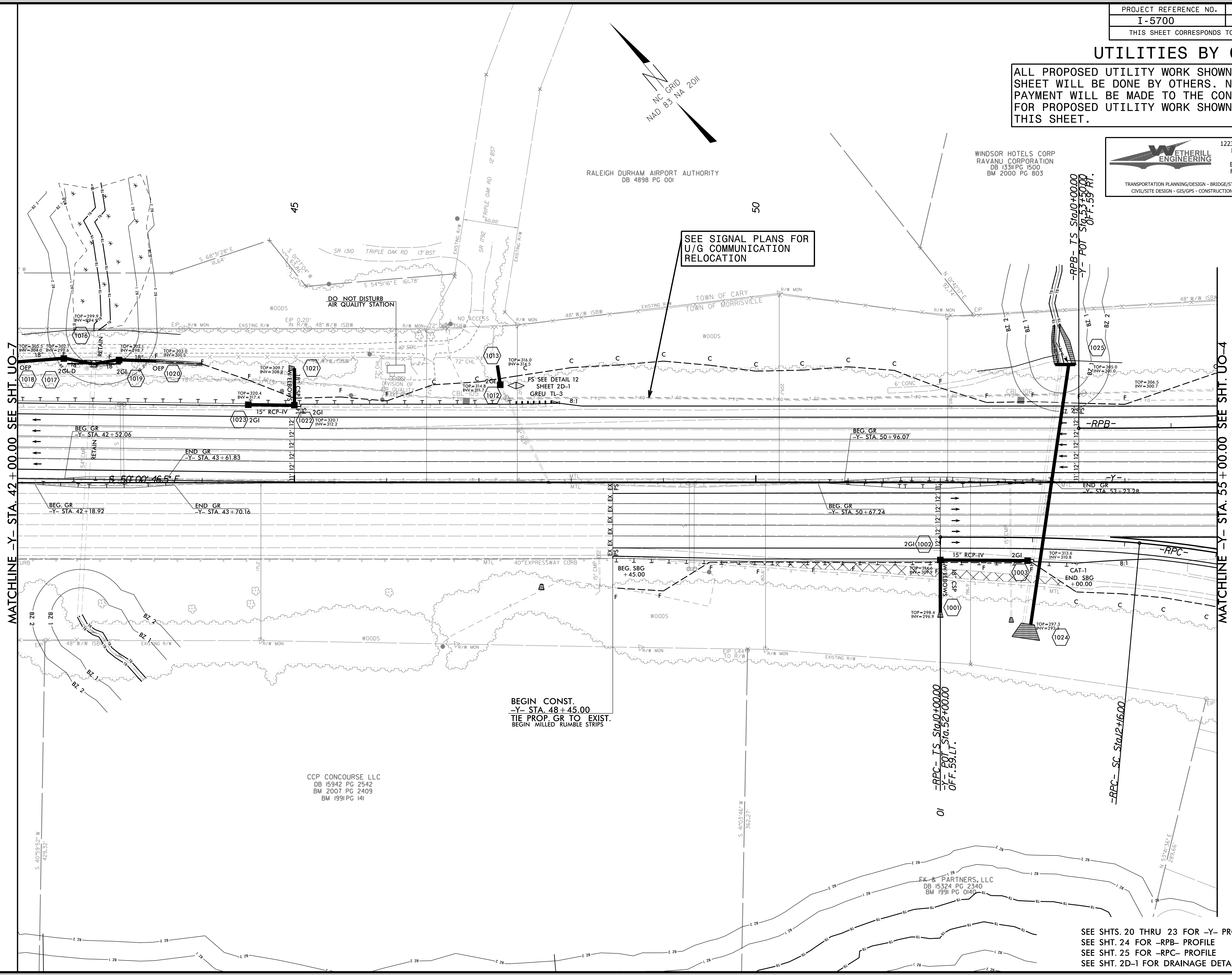
WETHERILL ENGINEERING
 1223 Jones Franklin Rd.
 Raleigh, N.C. 27606
 License No. F-03777
 Bus: 919 851 8077
 Fax: 919 851 8107

TRANSPORTATION PLANNING/DESIGN - BRIDGE/STRUCTURE DESIGN
 CIVIL/SITE DESIGN - GIS/GPS - CONSTRUCTION OBSERVATION

RALEIGH DURHAM AIRPORT AUTHORITY
 DB 4898 PG 001

WINDSOR HOTELS CORP
 RAVANU CORPORATION
 DB 1331 PG 1500
 BM 2000 PG 803

SEE SIGNAL PLANS FOR
 U/G COMMUNICATION
 RELOCATION



MATCHLINE -Y- STA. 42 + 00.00 SEE SHT. U0-7

MATCHLINE -Y- STA. 55 + 00.00 SEE SHT. U0-4

BEGIN CONST.
 -Y- STA. 48 + 45.00
 TIE PROP. GR TO EXIST.
 BEGIN MILLED RUMBLE STRIPS

CCP CONCOURSE LLC
 DB 15942 PG 2542
 BM 2007 PG 2409
 BM 1991 PG 141

-RPC- IS Sta 10+00.00
 -Y- POT Sta 52+00.00
 OFF. 58.LT.

-RPC- SC Sta 12+16.00

SEE SHTS. 20 THRU 23 FOR -Y- PROFILE
 SEE SHT. 24 FOR -RPB- PROFILE
 SEE SHT. 25 FOR -RPC- PROFILE
 SEE SHT. 2D-1 FOR DRAINAGE DETAILS

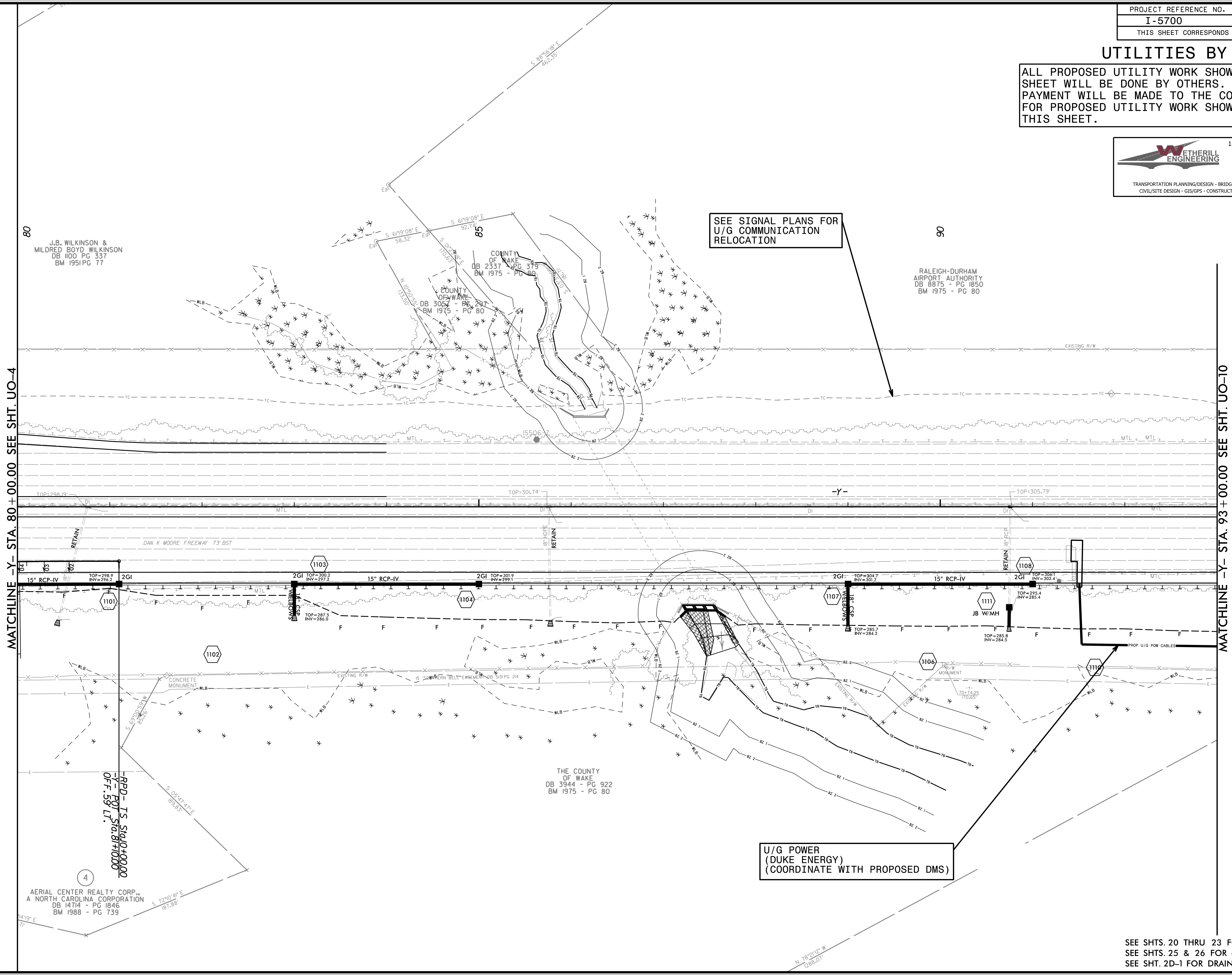
5/14/99
 27-A-1908
 I:\S\1\rdy10_U08_psh.dgn

UTILITIES BY OTHERS

ALL PROPOSED UTILITY WORK SHOWN ON THIS SHEET WILL BE DONE BY OTHERS. NO PAYMENT WILL BE MADE TO THE CONTRACTOR FOR PROPOSED UTILITY WORK SHOWN ON THIS SHEET.

WETHERILL ENGINEERING
 1223 Jones Franklin Rd.
 Raleigh, N.C. 27606
 License No. F-03777
 Bus: 919 851 8077
 Fax: 919 851 8107

TRANSPORTATION PLANNING/DESIGN - BRIDGE/STRUCTURE DESIGN
 CIVIL/SITE DESIGN - GIS/GPS - CONSTRUCTION OBSERVATION



SEE SIGNAL PLANS FOR U/G COMMUNICATION RELOCATION

U/G POWER (DUKE ENERGY) (COORDINATE WITH PROPOSED DMS)

MATCHLINE -Y- STA. 80 + 00.00 SEE SHT. UO-4

MATCHLINE -Y- STA. 93 + 00.00 SEE SHT. UO-10

SEE SHTS. 20 THRU 23 FOR -Y- PROFILE
 SEE SHTS. 25 & 26 FOR -RPD- PROFILE
 SEE SHT. 2D-1 FOR DRAINAGE DETAILS

5/14/99
 23-1-99-08
 USFF: schubert
 23-1-99-08
 ut_rdy11_UO9_psh.dgn

UTILITIES BY OTHERS

ALL PROPOSED UTILITY WORK SHOWN ON THIS SHEET WILL BE DONE BY OTHERS. NO PAYMENT WILL BE MADE TO THE CONTRACTOR FOR PROPOSED UTILITY WORK SHOWN ON THIS SHEET.

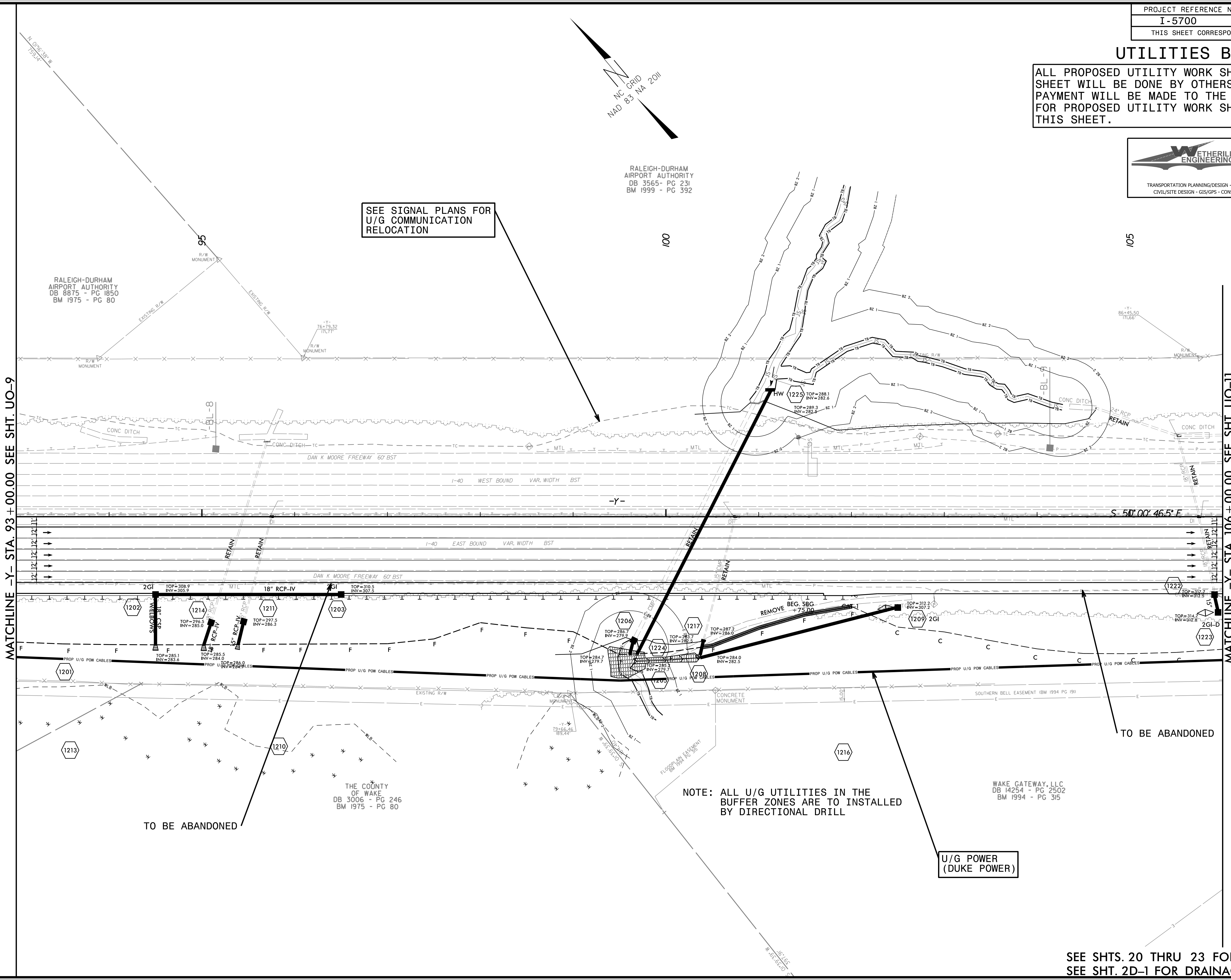
WETHERILL ENGINEERING
 1223 Jones Franklin Rd.
 Raleigh, N.C. 27606
 License No. F-03777
 Bus: 919 851 8077
 Fax: 919 851 8107

TRANSPORTATION PLANNING/DESIGN - BRIDGE/STRUCTURE DESIGN
 CIVIL/SITE DESIGN - GIS/GPS - CONSTRUCTION OBSERVATION



RALEIGH-DURHAM AIRPORT AUTHORITY
 DB 3565 - PG 231
 BM 1999 - PG 392

SEE SIGNAL PLANS FOR U/G COMMUNICATION RELOCATION



MATCHLINE -Y- STA. 93 + 00.00 SEE SHT. UO-9

MATCHLINE -Y- STA. 106 + 00.00 SEE SHT. UO-11

NOTE: ALL U/G UTILITIES IN THE BUFFER ZONES ARE TO BE INSTALLED BY DIRECTIONAL DRILL

U/G POWER (DUKE POWER)

TO BE ABANDONED

TO BE ABANDONED

SEE SHTS. 20 THRU 23 FOR -Y- PROFILE
 SEE SHT. 2D-1 FOR DRAINAGE DETAIL

5/14/99
 23-A-1009
 USIB: schubert.t.rdy12.u010.psh.dgn

UTILITIES BY OTHERS

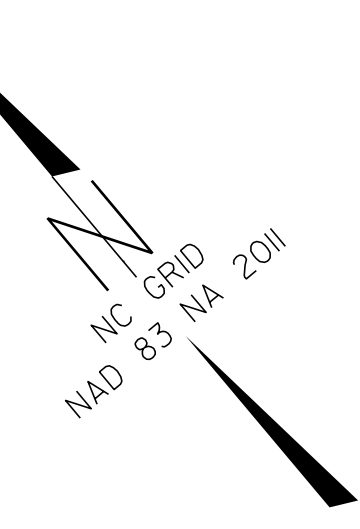
ALL PROPOSED UTILITY WORK SHOWN ON THIS SHEET WILL BE DONE BY OTHERS. NO PAYMENT WILL BE MADE TO THE CONTRACTOR FOR PROPOSED UTILITY WORK SHOWN ON THIS SHEET.



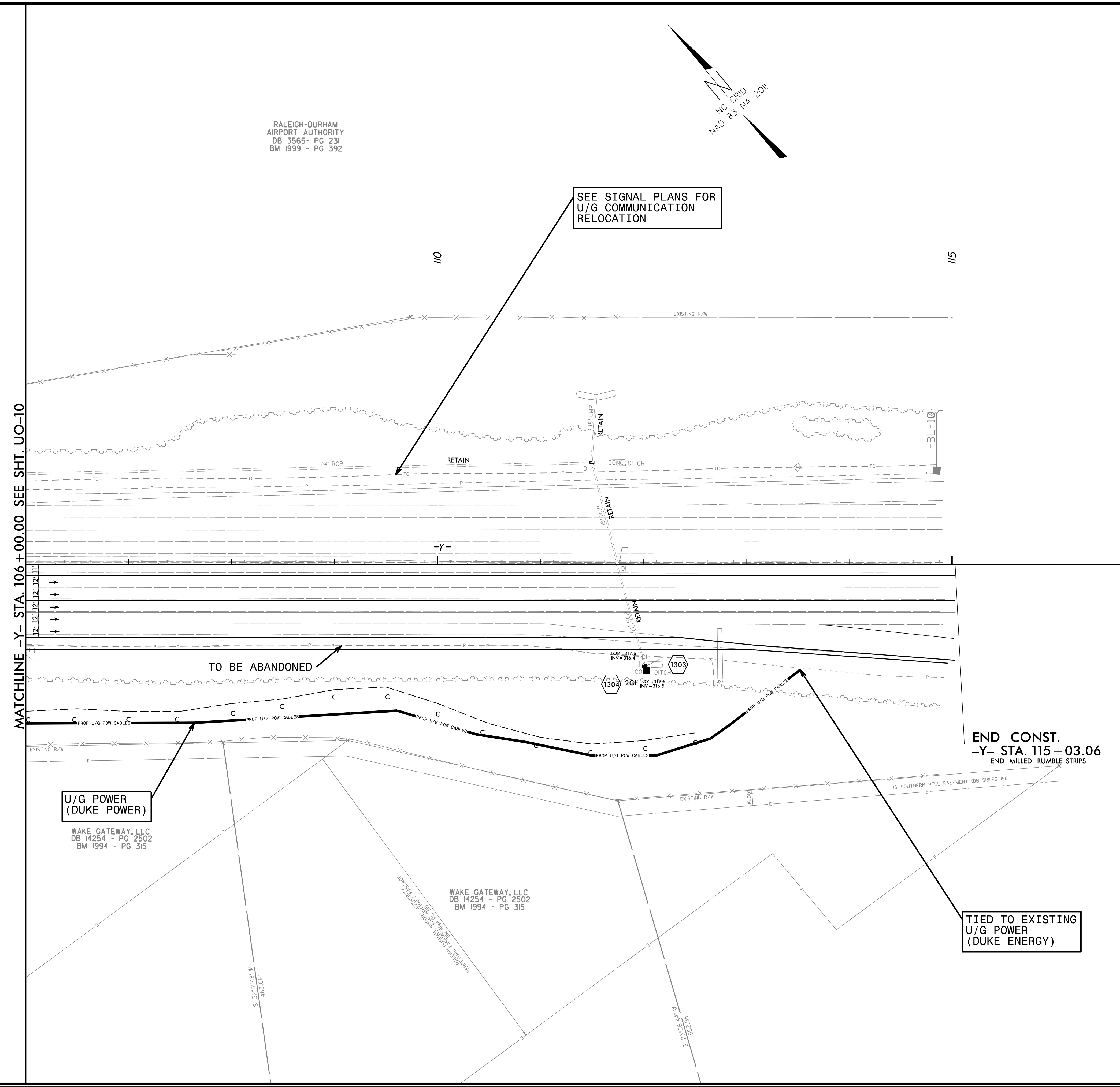
1223 Jones Franklin Rd.
Raleigh, N.C. 27606
License No. F-03777
Bus: 919 851 8077
Fax: 919 851 8107

TRANSPORTATION PLANNING/DESIGN - BRIDGE/STRUCTURE DESIGN
CIVIL/SITE DESIGN - GIS/GPS - CONSTRUCTION OBSERVATION

RALEIGH-DURHAM
AIRPORT AUTHORITY
DB 3565 - PG 231
BM 1999 - PG 392



SEE SIGNAL PLANS FOR
U/G COMMUNICATION
RELOCATION



5/14/99

23-1-19-000-000-1-13-1-0011-ps-h.dgn

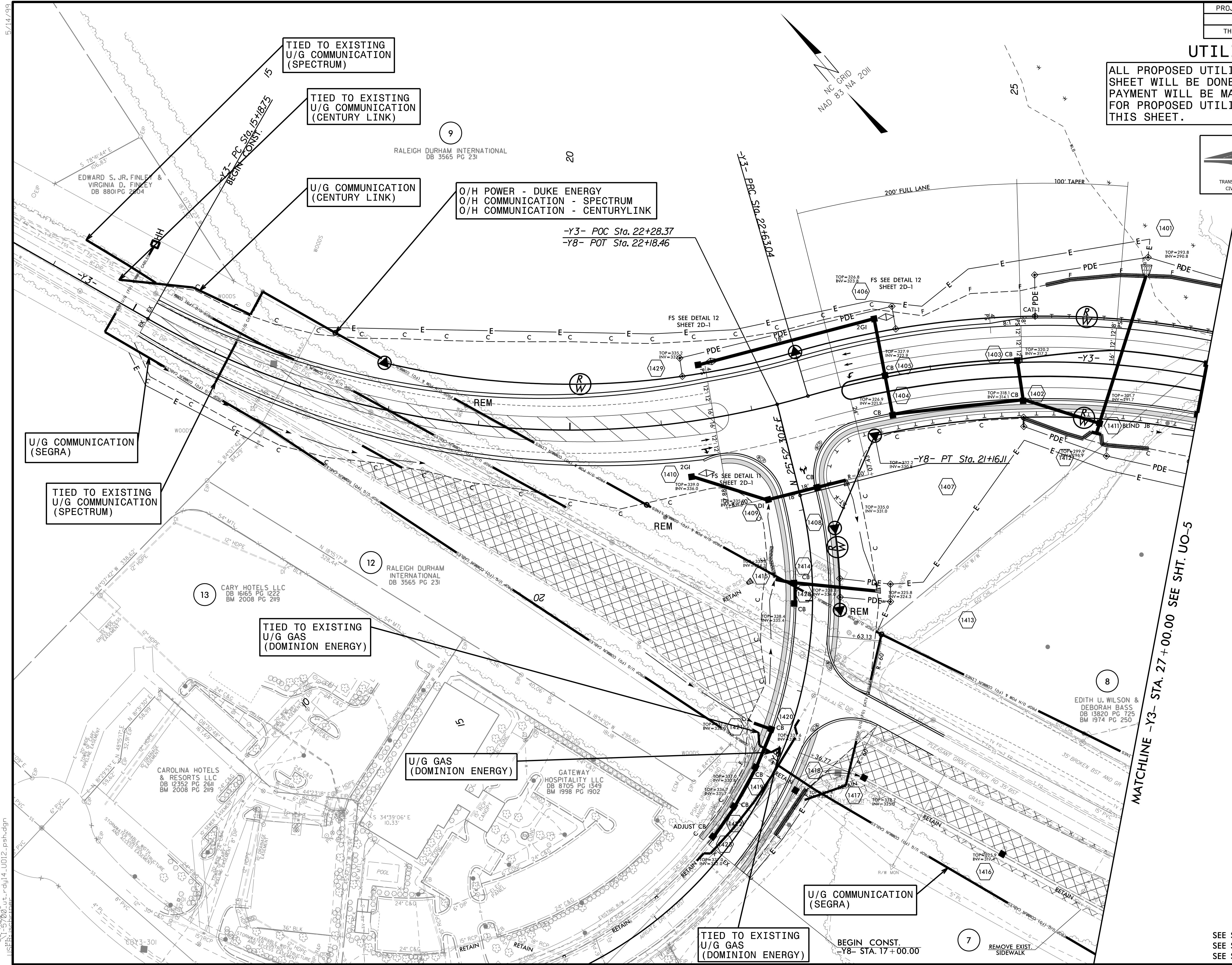
UTILITIES BY OTHERS

ALL PROPOSED UTILITY WORK SHOWN ON THIS SHEET WILL BE DONE BY OTHERS. NO PAYMENT WILL BE MADE TO THE CONTRACTOR FOR PROPOSED UTILITY WORK SHOWN ON THIS SHEET.



1223 Jones Franklin Rd.
Raleigh, N.C. 27606
License No. F-03771
Bus: 919 851 8077
Fax: 919 851 8107

TRANSPORTATION PLANNING/DESIGN - BRIDGE/STRUCTURE DESIGN
CIVIL/SITE DESIGN - GIS/GPS - CONSTRUCTION OBSERVATION



U/G COMMUNICATION (SEGRA)

TIED TO EXISTING U/G COMMUNICATION (SPECTRUM)

TIED TO EXISTING U/G COMMUNICATION (SPECTRUM)

TIED TO EXISTING U/G COMMUNICATION (CENTURY LINK)

U/G COMMUNICATION (CENTURY LINK)

O/H POWER - DUKE ENERGY
O/H COMMUNICATION - SPECTRUM
O/H COMMUNICATION - CENTURYLINK

-Y3- POC Sta. 22+28.37
-Y8- POT Sta. 22+18.46

TIED TO EXISTING U/G GAS (DOMINION ENERGY)

U/G GAS (DOMINION ENERGY)

TIED TO EXISTING U/G GAS (DOMINION ENERGY)

U/G COMMUNICATION (SEGRA)

BEGIN CONST. -Y8- STA. 17+00.00

MATCHLINE -Y3- STA. 27+00.00 SEE SHT. UO-5

	PROP CONC SIDEWALK
	PAYEMENT REMOVAL

SEE SHTS. 18 & 19 FOR -Y3- PROFILE
SEE SHT. 19 FOR -Y8- PROFILE
SEE SHT. 2D-1 FOR DRAINAGE DETAILS

5/14/09 2:14:09 PM rdyl4_U012_psh.dgn