

DIVISION OF HIGHWAYS
STATE OF NORTH CAROLINA

E&SC PLANS

PROJECT REFERENCE NO.

I-5700

SHEET NO.

EC-3B

Kimley»Horn
©2019

P.O. BOX 33068 • RALEIGH, N.C. 27636-3068

SOIL STABILIZATION TIMEFRAMES

<i>SITE DESCRIPTION</i>	<i>STABILIZATION TIME</i>	<i>TIMEFRAME EXCEPTIONS</i>
PERIMETER DIKES, SWALES, DITCHES AND SLOPES	7 DAYS	NONE
HIGH QUALITY WATER (HQW) ZONES	7 DAYS	NONE
SLOPES STEEPER THAN 3:1	7 DAYS	IF SLOPES ARE 10' OR LESS IN LENGTH AND ARE NOT STEEPER THAN 2:1, 14 DAYS ARE ALLOWED.
SLOPES 3:1 OR FLATTER	14 DAYS	7 DAYS FOR SLOPES GREATER THAN 50' IN LENGTH.
ALL OTHER AREAS WITH SLOPES FLATTER THAN 4:1	14 DAYS	NONE, EXCEPT FOR PERIMETERS AND HQW ZONES.

REVISIONS

5/14/99

\$DATE\$

5/14/2019

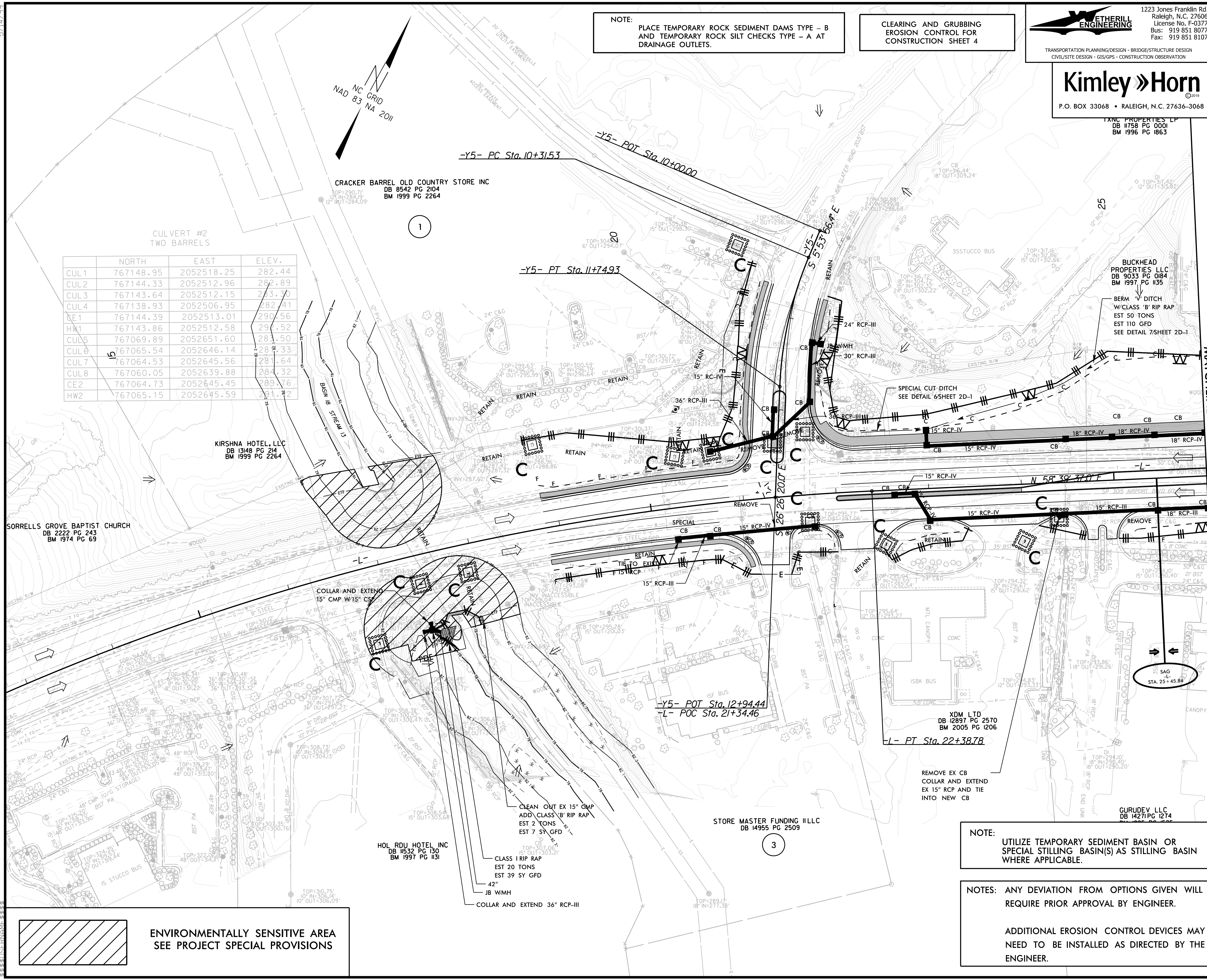
ETHERILL ENGINEERING
 1223 Jones Franklin Rd.
 Raleigh, N.C. 27606
 License No. F-0377
 Bus: 919 851 8077
 Fax: 919 851 8107

Kimley Horn
 ©2019
 P.O. BOX 33068 • RALEIGH, N.C. 27636-3068

PROJECT REFERENCE NO.	SHEET NO.
1-5700	EC-4/CONST.4
RW SHEET NO.	
ROADWAY DESIGN ENGINEER	HYDRAULICS ENGINEER

NOTE:
 PLACE TEMPORARY ROCK SEDIMENT DAMS TYPE - B AND TEMPORARY ROCK SILT CHECKS TYPE - A AT DRAINAGE OUTLETS.

CLEARING AND GRUBBING EROSION CONTROL FOR CONSTRUCTION SHEET 4



CULVERT #2
TWO BARRELS

	NORTH	EAST	ELEV.
CUL1	767148.95	2052518.25	282.44
CUL2	767144.33	2052512.96	282.89
CUL3	767143.64	2052512.15	283.30
CUL4	767138.93	2052506.95	282.41
CE1	767144.39	2052513.01	290.56
HW1	767143.86	2052512.58	29.52
CUL5	767069.89	2052651.60	283.50
CUL6	767065.54	2052646.14	283.33
CUL7	767064.53	2052645.56	281.64
CUL8	767060.05	2052639.88	284.32
CE2	767064.73	2052645.45	289.76
HW2	767065.15	2052645.59	291.12

SORRELLS GROVE BAPTIST CHURCH
 DB 2222 PG 243
 BM 1974 PG 69

KIRSHNA HOTEL, LLC
 DB 1349 PG 24
 BM 1999 PG 2264

CRACKER BARREL OLD COUNTRY STORE INC
 DB 8542 PG 204
 BM 1999 PG 2264

BUCKHEAD PROPERTIES LLC
 DB 9033 PG 084
 BM 1997 PG 035

XDM LTD
 DB 12897 PG 2570
 BM 2005 PG 1206

GURUDEV LLC
 DB 14271 PG 1274

STORE MASTER FUNDING I LLC
 DB 14955 PG 2509

HOL ROI HOTEL INC
 DB 11532 PG 130
 BM 1997 PG 031

ENVIRONMENTALLY SENSITIVE AREA
 SEE PROJECT SPECIAL PROVISIONS

NOTE:
 UTILIZE TEMPORARY SEDIMENT BASIN OR SPECIAL STILLING BASIN(S) AS STILLING BASIN WHERE APPLICABLE.

NOTES: ANY DEVIATION FROM OPTIONS GIVEN WILL REQUIRE PRIOR APPROVAL BY ENGINEER.

ADDITIONAL EROSION CONTROL DEVICES MAY NEED TO BE INSTALLED AS DIRECTED BY THE ENGINEER.

★ PROPOSED TRAFFIC SIGNAL

SEE SHTS. 15 & 16 FOR -L- PROFILE
 SEE SHT. 19 FOR -Y5- PROFILE

MATCHLINE -L- STA. 26 + 00.00 SEE SHT. 5

5/14/2019

NOTE: PLACE TEMPORARY ROCK SEDIMENT DAMS TYPE - B AND TEMPORARY ROCK SILT CHECKS TYPE - A AT DRAINAGE OUTLETS.

	NORTH	EAST	ELEV.
CUL1	767996.90	2053907.59	282.7
CUL2	767992.17	2053899.10	280.78
CUL3	767991.64	2053898.27	280.99
CUL4	767986.83	2053889.93	281.97
CUL5	767986.36	2053888.99	281.42
CUL6	767981.56	2053888.63	281.31
CE1	767989.21	2053894.04	281.02
CUL7	767989.54	2053894.66	281.14
CUL8	767866.33	2053980.45	280.84
CUL9	767861.79	2053971.2	280.97
CUL10	767856.49	2053962.25	281.07
CUL11	767855.96	2053961.51	281.22
CUL12	767851.50	2053957.39	280.91
CE2	767859.7	2053966.50	282.53
HW2	767859.89	2053966.50	282.88

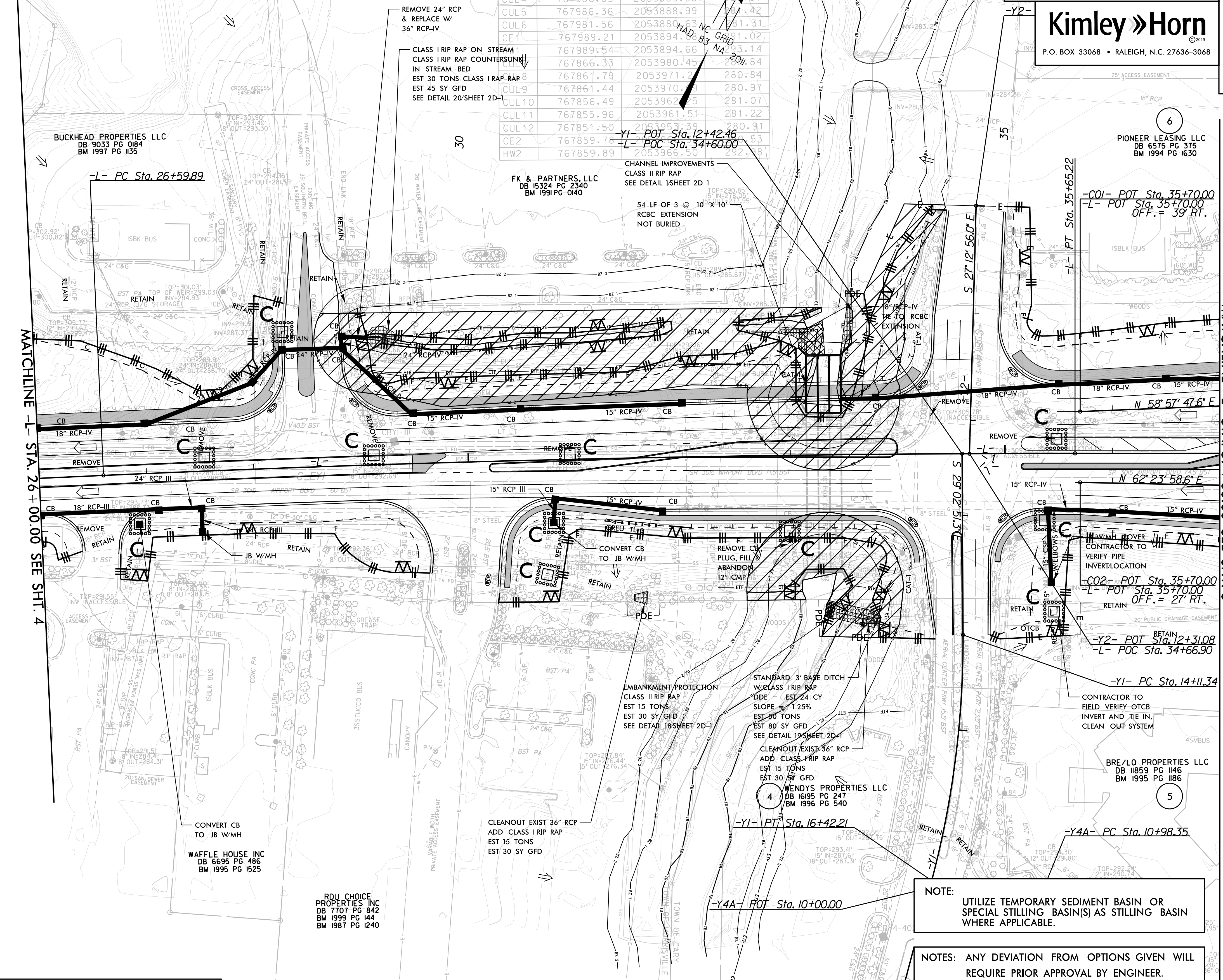
CLEARING AND GRUBBING EROSION CONTROL FOR CONSTRUCTION SHEET 5

ETHERILL ENGINEERING
 1223 Jones Franklin Rd.
 Raleigh, N.C. 27606
 License No. F-0377
 Bus: 919 851 8077
 Fax: 919 851 8107

Kimley Horn
 P.O. BOX 33068 • RALEIGH, N.C. 27636-3068

TRANSPORTATION PLANNING/DESIGN • BRIDGE/STRUCTURE DESIGN
 CIVIL/SITE DESIGN • GIS/GPS • CONSTRUCTION OBSERVATION

PROJECT REFERENCE NO. 1-5700	SHEET NO. EC-5/CONST.5
RW SHEET NO.	
ROADWAY DESIGN ENGINEER	HYDRAULICS ENGINEER



 ENVIRONMENTALLY SENSITIVE AREA
SEE PROJECT SPECIAL PROVISIONS

NOTE: UTILIZE TEMPORARY SEDIMENT BASIN OR SPECIAL STILLING BASIN(S) AS STILLING BASIN WHERE APPLICABLE.

NOTES: ANY DEVIATION FROM OPTIONS GIVEN WILL REQUIRE PRIOR APPROVAL BY ENGINEER.

ADDITIONAL EROSION CONTROL DEVICES MAY NEED TO BE INSTALLED AS DIRECTED BY THE ENGINEER.

★ PROPOSED TRAFFIC SIGNAL

SEE SHTS. 15 & 16 FOR -L- PROFILE
 SEE SHT. 17 FOR -Y1- PROFILE
 SEE SHT. 18 FOR -Y2- PROFILE

5/14/99

PROJECT REFERENCE NO.	SHEET NO.
I-5700	EC-5A/CONST.5
ROADWAY DESIGN ENGINEER	HYDRAULICS ENGINEER

CULVERT CONSTRUCTION SEQUENCE STA. 33+31 -L-

PHASE I

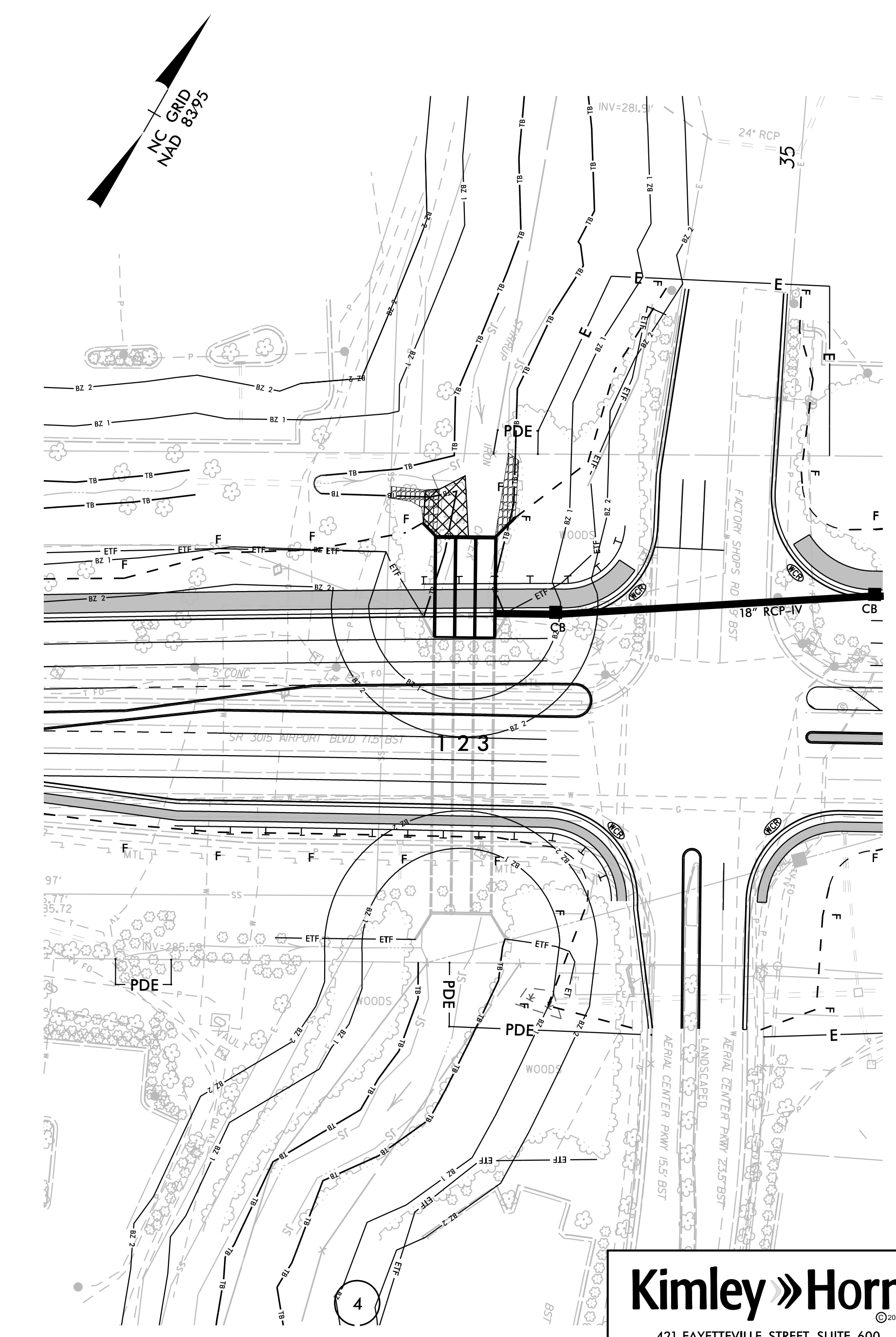
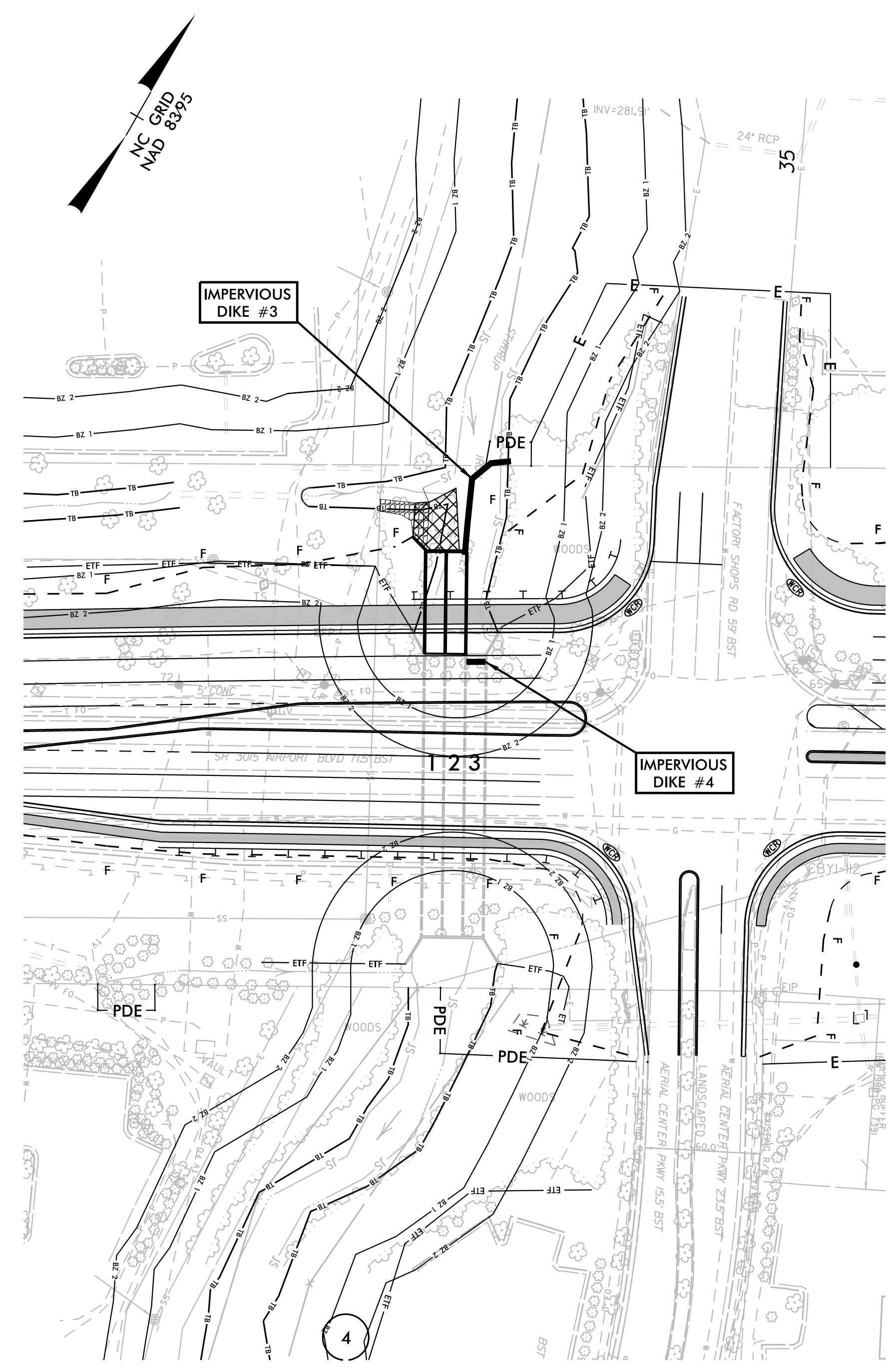
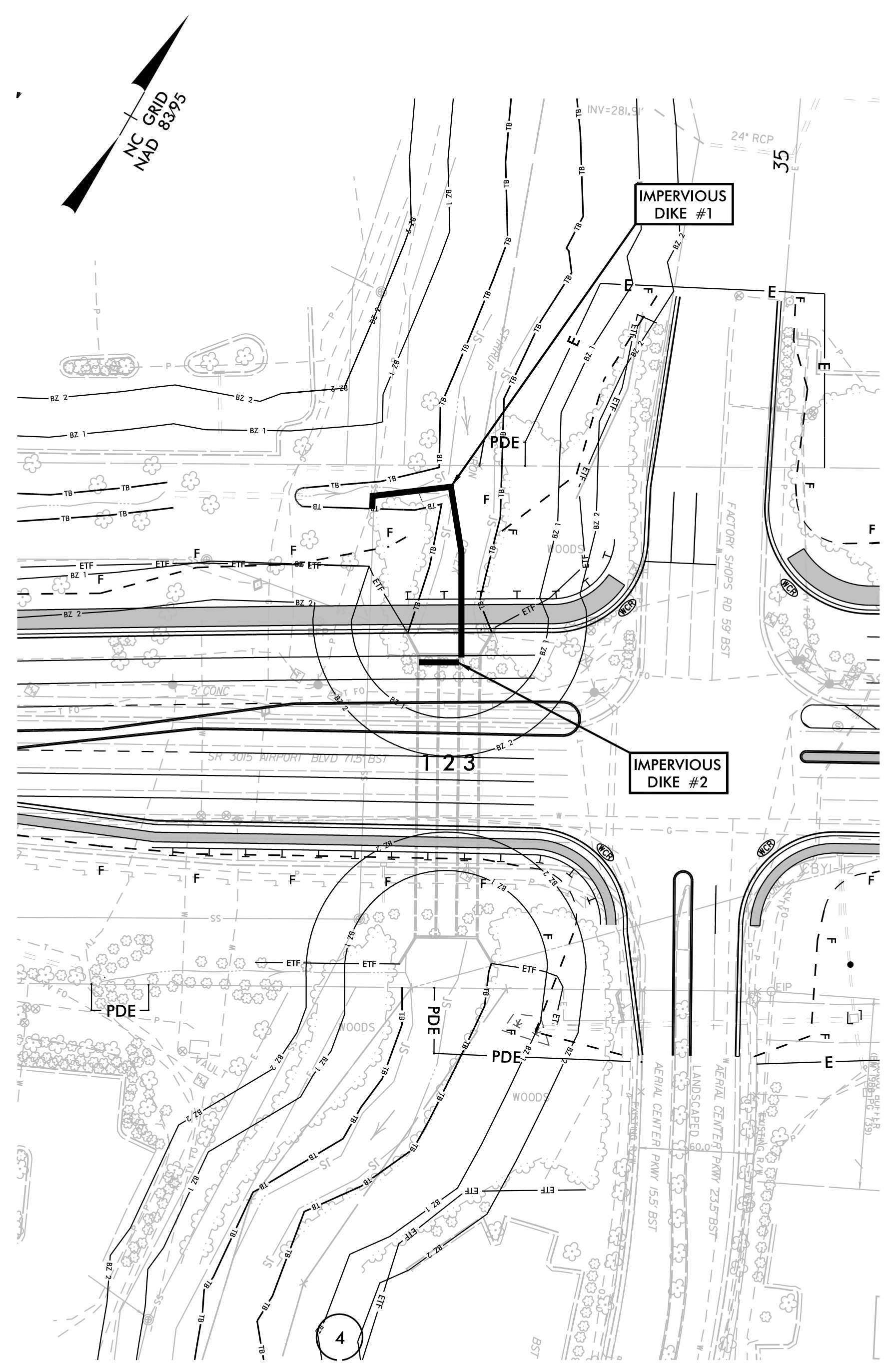
- 1.) CONSTRUCT TEMPORARY SPECIAL STILLING BASIN, AND ALL OTHER TEMPORARY EROSION CONTROL MEASURES TO STABILIZE WORK AREA.
- 2.) CONSTRUCT IMPERVIOUS DIKE #1 AND DIKE#2 AT LOCATIONS SHOWN IN SKETCH TO DIVERT FLOW INTO BARREL 3.
- 3.) DEWATER THE AREA BETWEEN THE EXISTING CULVERT AND UPSTREAM OF INLET CHANNEL IMPROVEMENTS. EXCAVATE UNDER PROPOSED CULVERT FOOTPRINT AND STREAM BED PER GEOTECHNICAL RECOMMENDATIONS / STRUCTURAL PLANS.
- 4.) REFERENCE SHEET TMP SHEETS FOR ADDITIONAL DETAIL REGARDING TRAFFIC MANAGEMENT.

PHASE II

- 1.) CONSTRUCT 2 @ 10' X 10' RCBC UPSTREAM EXTENSION (BARRELS #1 & #2) IN EXCAVATED TRENCH AS SHOWN, INCLUDING WINGWALLS AT STATION 33+31 -L- AND CONSTRUCT ROADWAY FILL.
- 2.) MAKE UPSTREAM CHANNEL IMPROVEMENTS AND PLACE REQUIRED RIPRAP AND MATTING ON CHANNEL BANKS.
- 3.) MOVE IMPERVIOUS DIKES#1 AND #2 TO THE LOCATIONS OF DIKES#3 AND #4 SHOWN IN SKETCH TO DIVERT FLOW INTO BARRELS 1 AND 2.
- 4.) DEWATER THE AREA BETWEEN THE EXISTING CULVERT AND UPSTREAM OF INLET CHANNEL IMPROVEMENTS. EXCAVATE UNDER PROPOSED CULVERT FOOTPRINT AND STREAM BED PER GEOTECHNICAL RECOMMENDATIONS / STRUCTURAL PLANS.

PHASE III

- 1.) CONSTRUCT 1 @ 10' X 10' RCBC UPSTREAM EXTENSION (BARREL #3) IN EXCAVATED TRENCH AS SHOWN, INCLUDING WINGWALLS AT STATION 33+31 -L- AND CONSTRUCT ROADWAY FILL.
- 2.) MAKE UPSTREAM CHANNEL IMPROVEMENTS AND PLACE REQUIRED RIPRAP AND MATTING ON CHANNEL BANKS.
- 3.) REMOVE TEMPORARY SPECIAL STILLING BASIN.
- 4.) STABILIZE DISTURBED AREA AND REMOVE ALL EROSION AND SEDIMENT CONTROL DEVICES AS DIRECTED BY ENGINEER.
- 5.) FINISH ROADWAY AND DRAINAGE CONSTRUCTION.



2/22/2019