

**This electronic collection of documents is provided
for the convenience of the user
and is Not a Certified Document –**

**The documents contained herein were originally issued
and sealed by the individuals whose names and license
numbers appear on each page, on the dates appearing
with their signature on that page.**

**This file or an individual page
shall not be considered a certified document.**

09/05/199

TIP PROJECT: A-0011C

STATE OF NORTH CAROLINA DIVISION OF HIGHWAYS

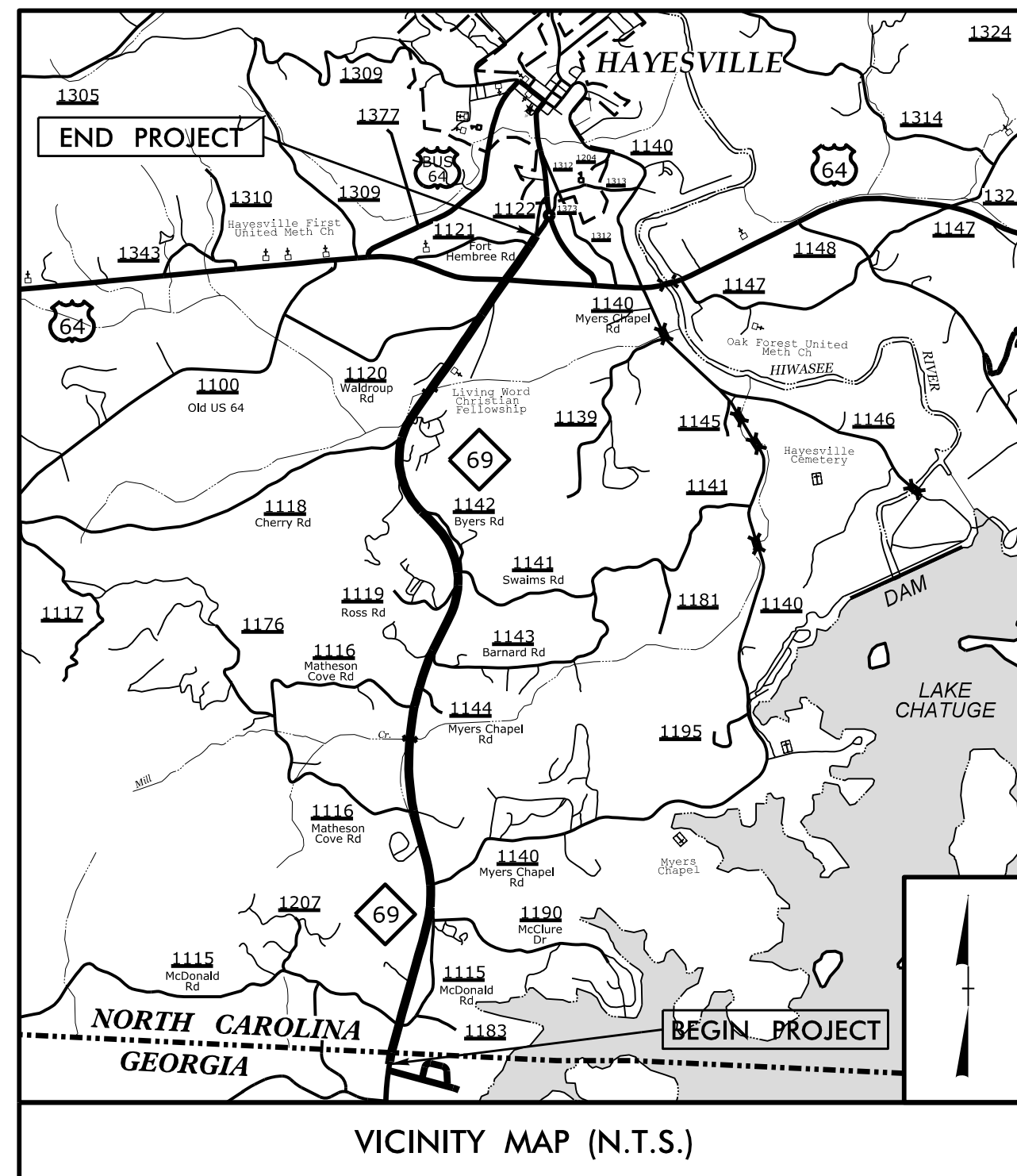
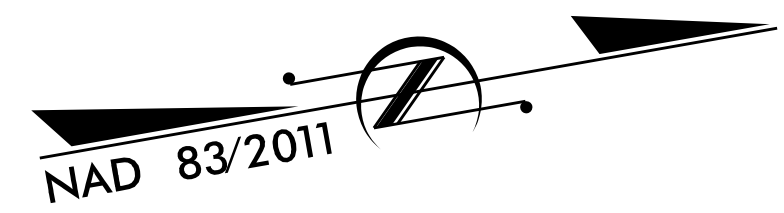
T.I.P. NO.	SHEET NO.
A-0011C	UO-1

NOTE:
ALL UTILITY WORK SHOWN ON THIS SHEET WILL BE DONE BY OTHERS. NO PAYMENT WILL BE MADE TO THE CONTRACTOR FOR UTILITY WORK SHOWN ON THIS SHEET.

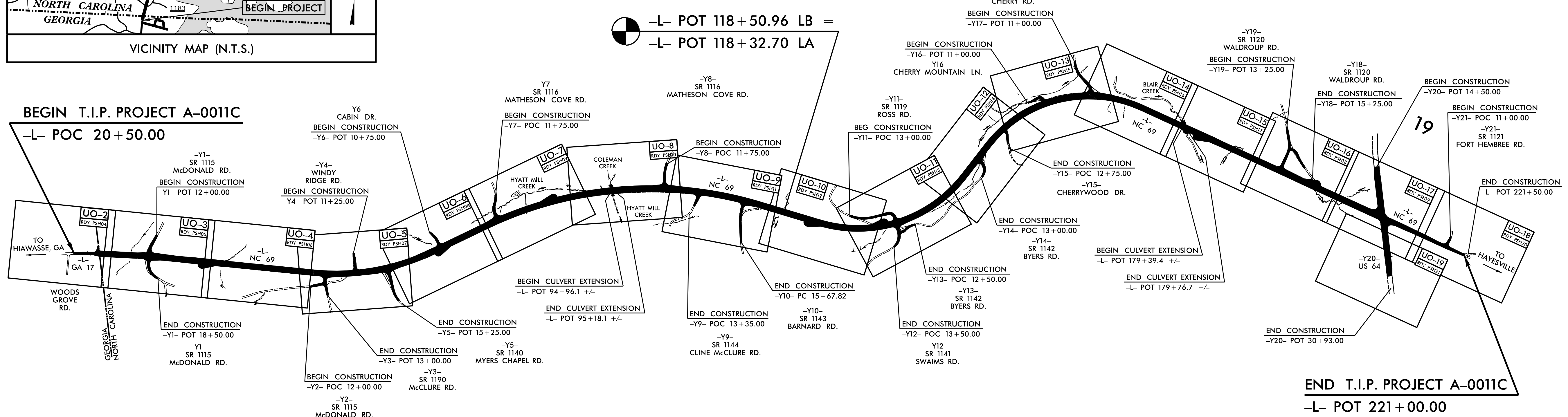
UTILITIES BY OTHERS PLANS CLAY COUNTY

LOCATION: NC69 FROM GEORGIA STATELINE TO US64

TYPE OF WORK: RELOCATE POWER, TELEPHONE, FIBER AND CATV



VICINITY MAP (N.T.S.)

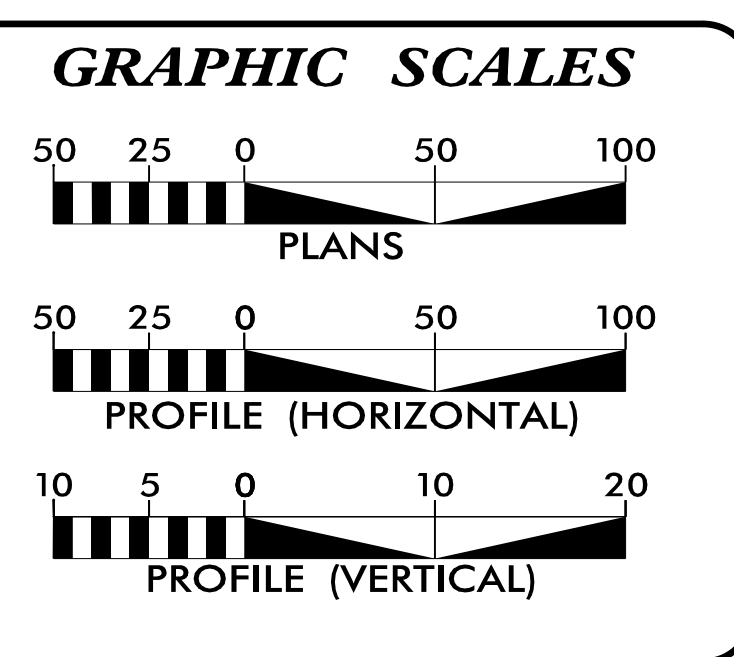


BEGIN T.I.P. PROJECT A-0011C

-L- POC 20+50.00

END T.I.P. PROJECT A-0011C

-L- POT 221+00.00



INDEX OF SHEETS	
SHEET NO.:	DESCRIPTION:
UO-1	TITLE SHEET
UO-2 THRU UO-19	UBO PLAN SHEETS

UTILITY OWNERS WITH CONFLICTS	
(A) POWER - BLUE RIDGE ENERGY EMC	
(B) PHONE - FRONTIER	
(C) CABLE - WINDSTREAM	
(D) FIBER - BALSAM WEST	

PREPARED IN THE OFFICE OF:

Weston & Sampson 698 East Chatham Street Suite 137
 Cary, NC 27511
 Phone: 919.297.0220 Fax: 919.297.0221
 WSE of North Carolina, PC NC License: C-4647

ROBIN SOBHA UTILITY PROJECT MANAGER
BILL GREEN PROJECT UTILITY COORDINATOR
BOB GOLDING PROJECT UTILITY ENGINEER

**DIVISION OF HIGHWAYS
UTILITIES 14**

DIV ADDRESS:
253 WEBSTER ROAD
SYLVIA, NC 28779

KENNETH MCDOWELL
ASSISTANT DESIGN CONSTRUCTION ENGINEER

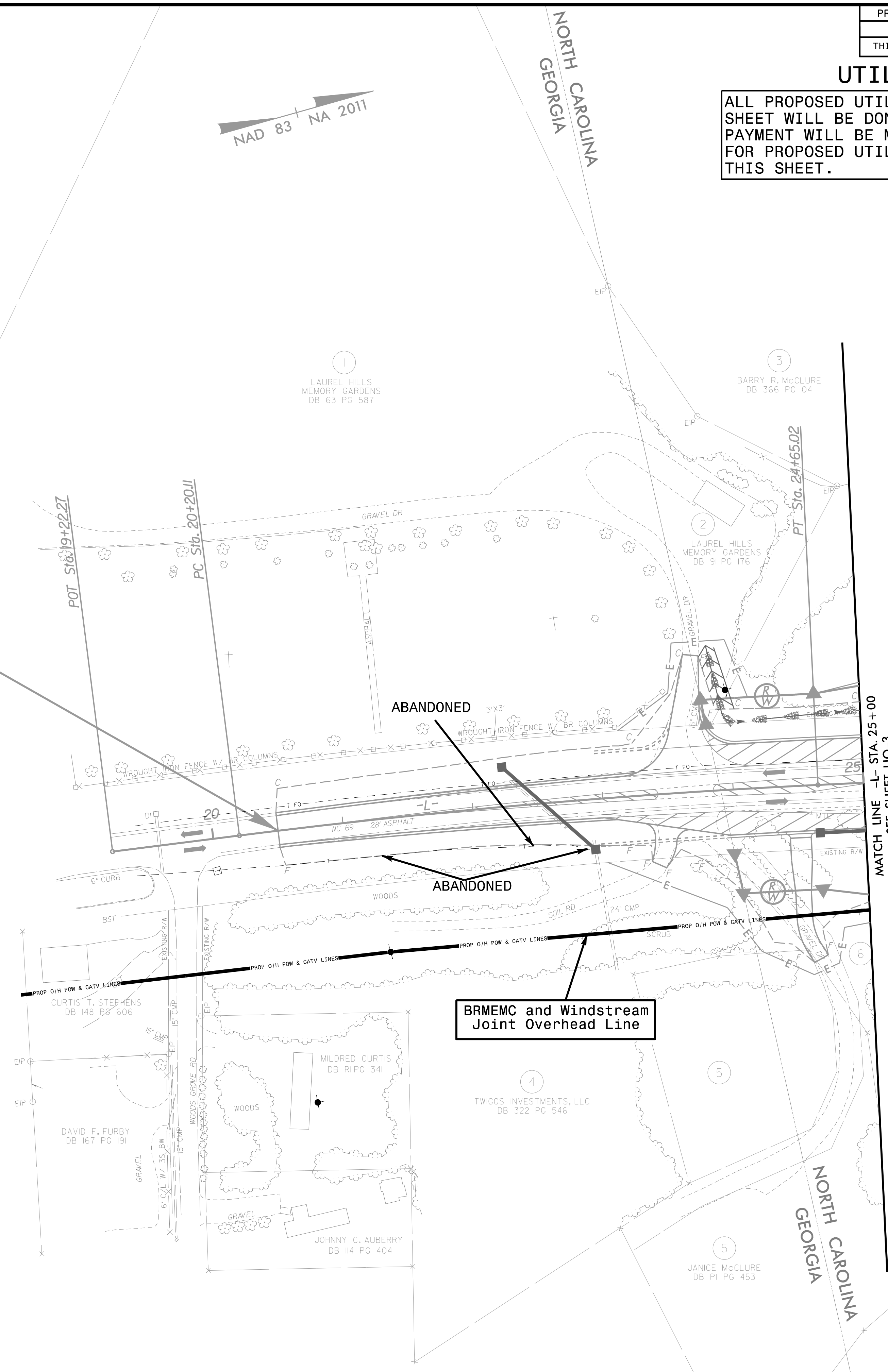
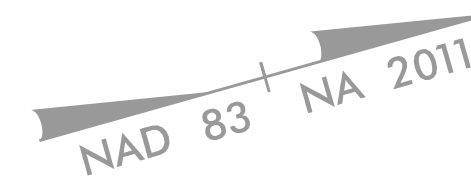
\$\$\$\$\$SYTIME\$\$\$\$\$
\$\$\$\$\$DDN\$\$\$\$\$
\$\$\$\$\$USERNAME\$\$\$\$\$

UTILITIES BY OTHERS

ALL PROPOSED UTILITY WORK SHOWN ON THIS SHEET WILL BE DONE BY OTHERS. NO PAYMENT WILL BE MADE TO THE CONTRACTOR FOR PROPOSED UTILITY WORK SHOWN ON THIS SHEET.

BALSAM WEST WILL PLACE A TEMPORARY AERIAL LINE ON BRMEMC POLE LINE. UPON COMPLETION OF PROJECT, BALSAM WEST WILL PLACE A NEW UNDERGROUND FIBER AND REMOVE TEMPORARY AERIAL

BEGIN T.I.P. PROJECT A-0011C
-L- POC 20+50.00

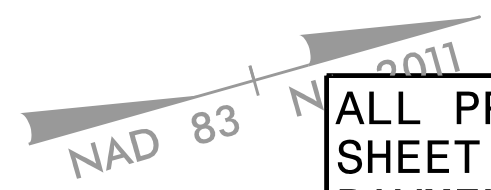


MATCH LINE -L- STA. 25+00
SEE SHEET UO-3

B:\13\99
 7/3/2015 06:59:09
 C:\Users\B10555\Documents\Projects\A0011C\A0011C-ut-l-r-dj04_uo02_psh.dgn

UTILITIES BY OTHERS

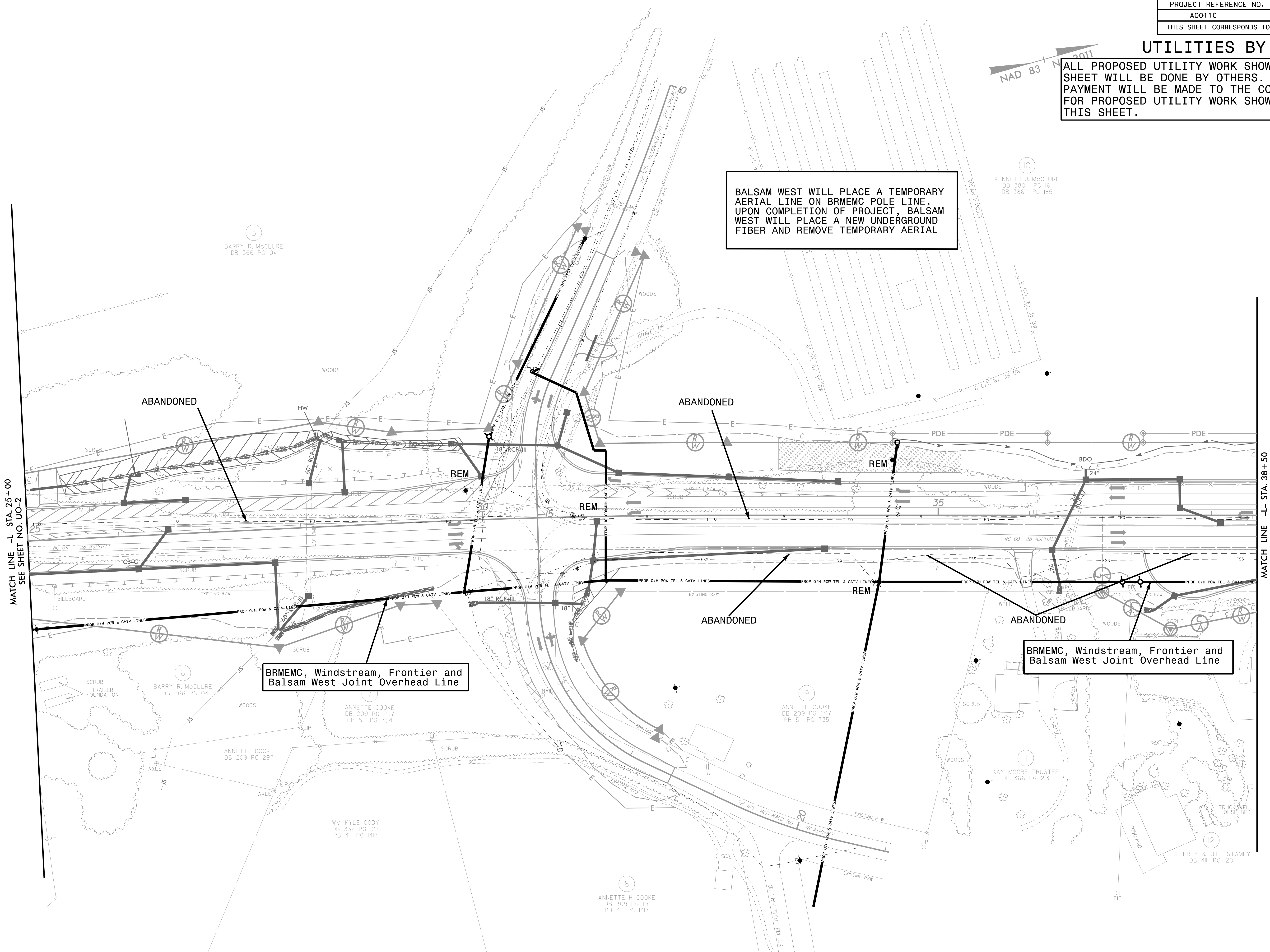
ALL PROPOSED UTILITY WORK SHOWN ON THIS SHEET WILL BE DONE BY OTHERS. NO PAYMENT WILL BE MADE TO THE CONTRACTOR FOR PROPOSED UTILITY WORK SHOWN ON THIS SHEET.



BALSAM WEST WILL PLACE A TEMPORARY AERIAL LINE ON BRMEMC POLE LINE. UPON COMPLETION OF PROJECT, BALSAM WEST WILL PLACE A NEW UNDERGROUND FIBER AND REMOVE TEMPORARY AERIAL

BRMEMC, Windstream, Frontier and Balsam West Joint Overhead Line

BRMEMC, Windstream, Frontier and Balsam West Joint Overhead Line



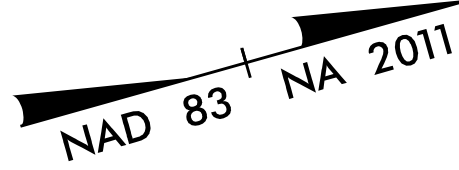
MATCH LINE -L- STA. 25+00
SEE SHEET NO. UO-2

MATCH LINE -L- STA. 38+50
SEE SHEET UO-4

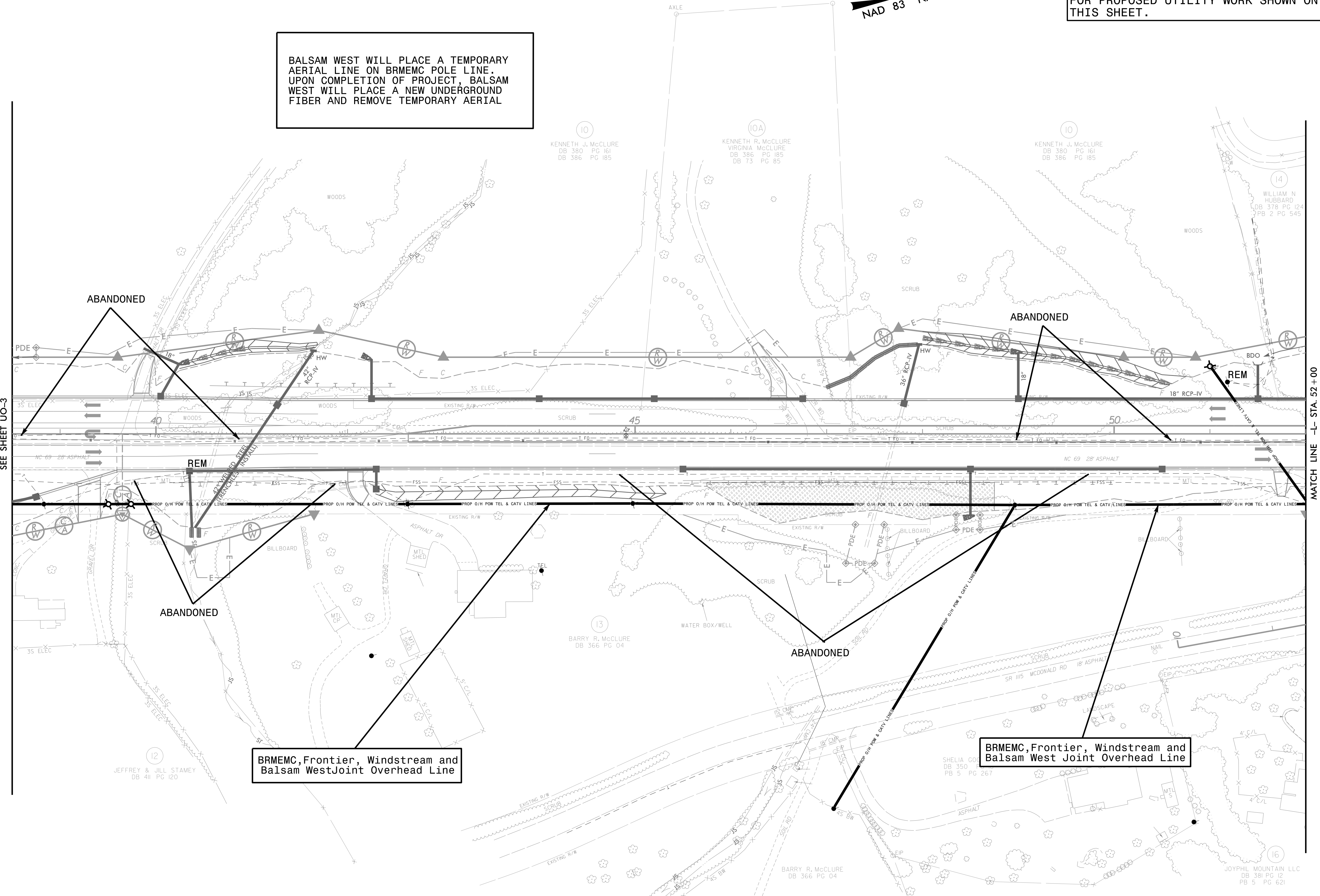
5/14/99
 F:\005\0659\093\A0011C\Utilities\Engineering\UBD\Proj\UBD_Submittal\290_006_A0011C.ut_rdy5.uo03.psh.dgn
 4:36:57 PM

UTILITIES BY OTHERS

ALL PROPOSED UTILITY WORK SHOWN ON THIS SHEET WILL BE DONE BY OTHERS. NO PAYMENT WILL BE MADE TO THE CONTRACTOR FOR PROPOSED UTILITY WORK SHOWN ON THIS SHEET.



BALSAM WEST WILL PLACE A TEMPORARY AERIAL LINE ON BRMEMC POLE LINE. UPON COMPLETION OF PROJECT, BALSAM WEST WILL PLACE A NEW UNDERGROUND FIBER AND REMOVE TEMPORARY AERIAL



MATCH LINE -L- STA. 38+50
SEE SHEET UO-3

MATCH LINE -L- STA. 52+00
SEE SHEET UO-5

BRMEMC, Frontier, Windstream and Balsam West Joint Overhead Line

BRMEMC, Frontier, Windstream and Balsam West Joint Overhead Line

F:\2008\0659\093\A0011C\Utilities\Engineering\UBD\Proj\UBD_Submittal\290_009_A0011C.ctb\dj6_uc04_psh.dgn
 5/14/09

UTILITIES BY OTHERS

ALL PROPOSED UTILITY WORK SHOWN ON THIS SHEET WILL BE DONE BY OTHERS. NO PAYMENT WILL BE MADE TO THE CONTRACTOR FOR PROPOSED UTILITY WORK SHOWN ON THIS SHEET.

BALSAM WEST WILL PLACE A TEMPORARY AERIAL LINE ON BRMEMC POLE LINE. UPON COMPLETION OF PROJECT, BALSAM WEST WILL PLACE A NEW UNDERGROUND FIBER AND REMOVE TEMPORARY AERIAL

NAD 83 NA 2011

(13) CHRISTOPHER JOHN GREBA
MALOCH LEE MAYFIELD
DB 364 PG 110

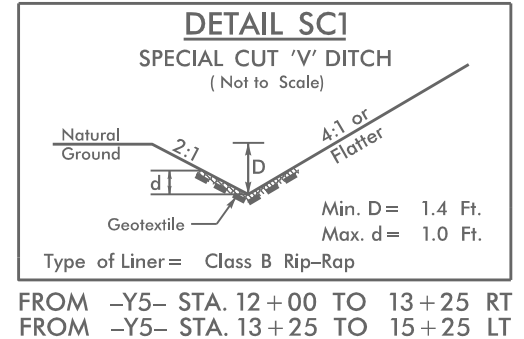
RICHARD M. WIEGOLD SR.
DB 389 PG 70
PB 4 PG 472

MATCH LINE -L- STA. 52+00
SEE SHEET UO-4

MATCH LINE -L- STA. 64+50
SEE SHEET UO-6

ABANDONED
BEGIN RETAINING WALL I & PEDESTRAIN SAFETY RAIL
-L- STA. 59+85.00 (54' RT)
END RETAINING WALL I & PEDESTRAIN SAFETY RAIL
-L- STA. 61+75.00 (58' RT)
RICHARD WIEGOLD TRUSTEES
DB 389 PG 70
PB 4 PG 513

BRMEMC, Frontier, Windstream and Balsam West Joint Overhead Line



5/14/99
 7/1/05
 F:\05\0659\093\A0011C\Utilities\Engineering\UBD\Proj\UBD_Submittal\290_012_A0011C_ut_rdy_7_u005_psh.dgn
 5/20/05

UTILITIES BY OTHERS

ALL PROPOSED UTILITY WORK SHOWN ON THIS SHEET WILL BE DONE BY OTHERS. NO PAYMENT WILL BE MADE TO THE CONTRACTOR FOR PROPOSED UTILITY WORK SHOWN ON THIS SHEET.

BALSAM WEST WILL PLACE A TEMPORARY AERIAL LINE ON BRMEMC POLE LINE. UPON COMPLETION OF PROJECT, BALSAM WEST WILL PLACE A NEW UNDERGROUND FIBER AND REMOVE TEMPORARY AERIAL

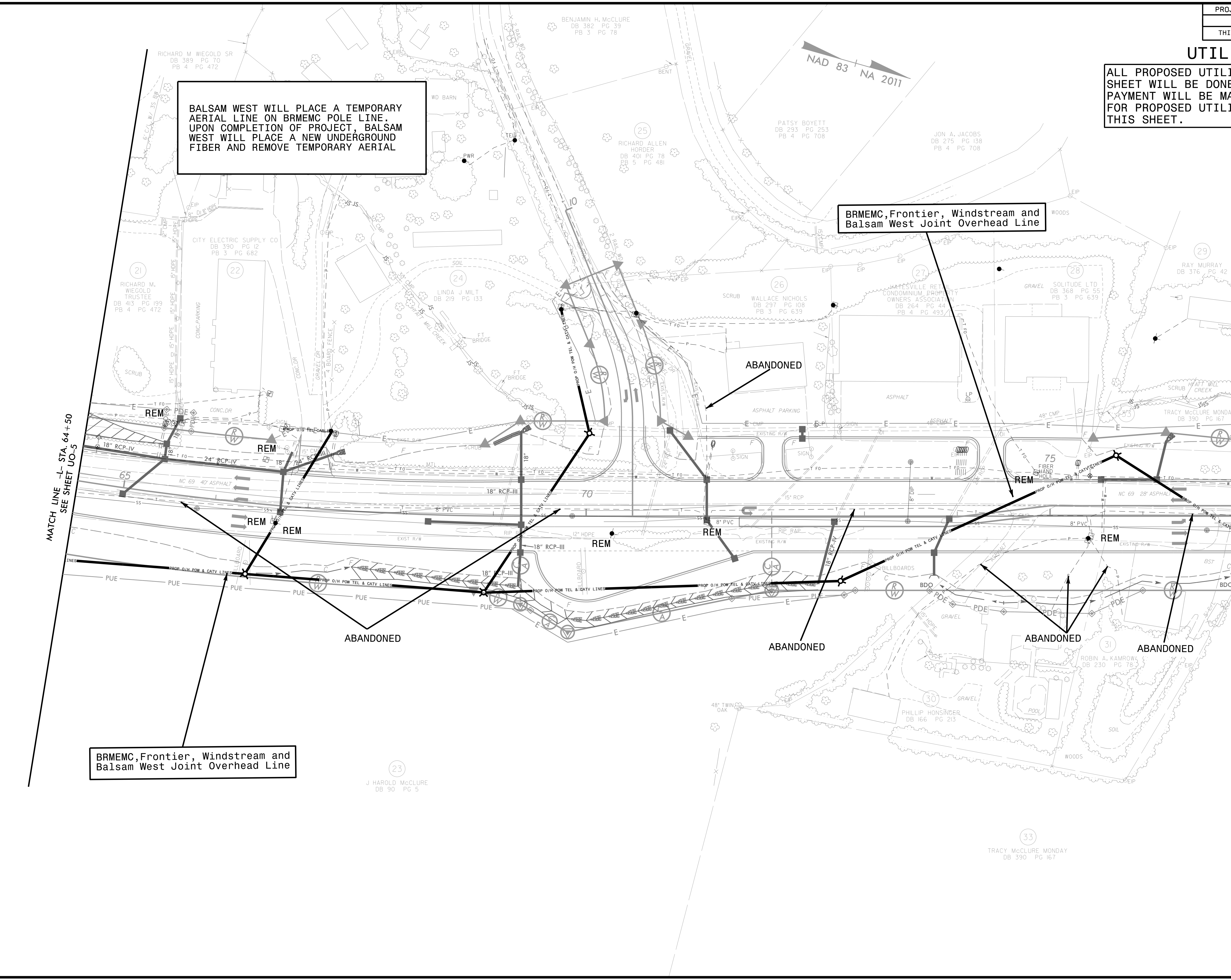
BRMEMC, Frontier, Windstream and Balsam West Joint Overhead Line

BRMEMC, Frontier, Windstream and Balsam West Joint Overhead Line

MATCH LINE -L- STA. 64+50
SEE SHEET UO-5

MATCH LINE -L- STA. 77+00
SEE SHEET UO-7

5/14/99
 F:\0085\0659\093\A0011C\Utilities\Engineering\UBD\Proj\UBD_Submittal\290_015_A0011C-ut-rdy8-uo06-psb.dgn
 5/14/99 10:32 AM

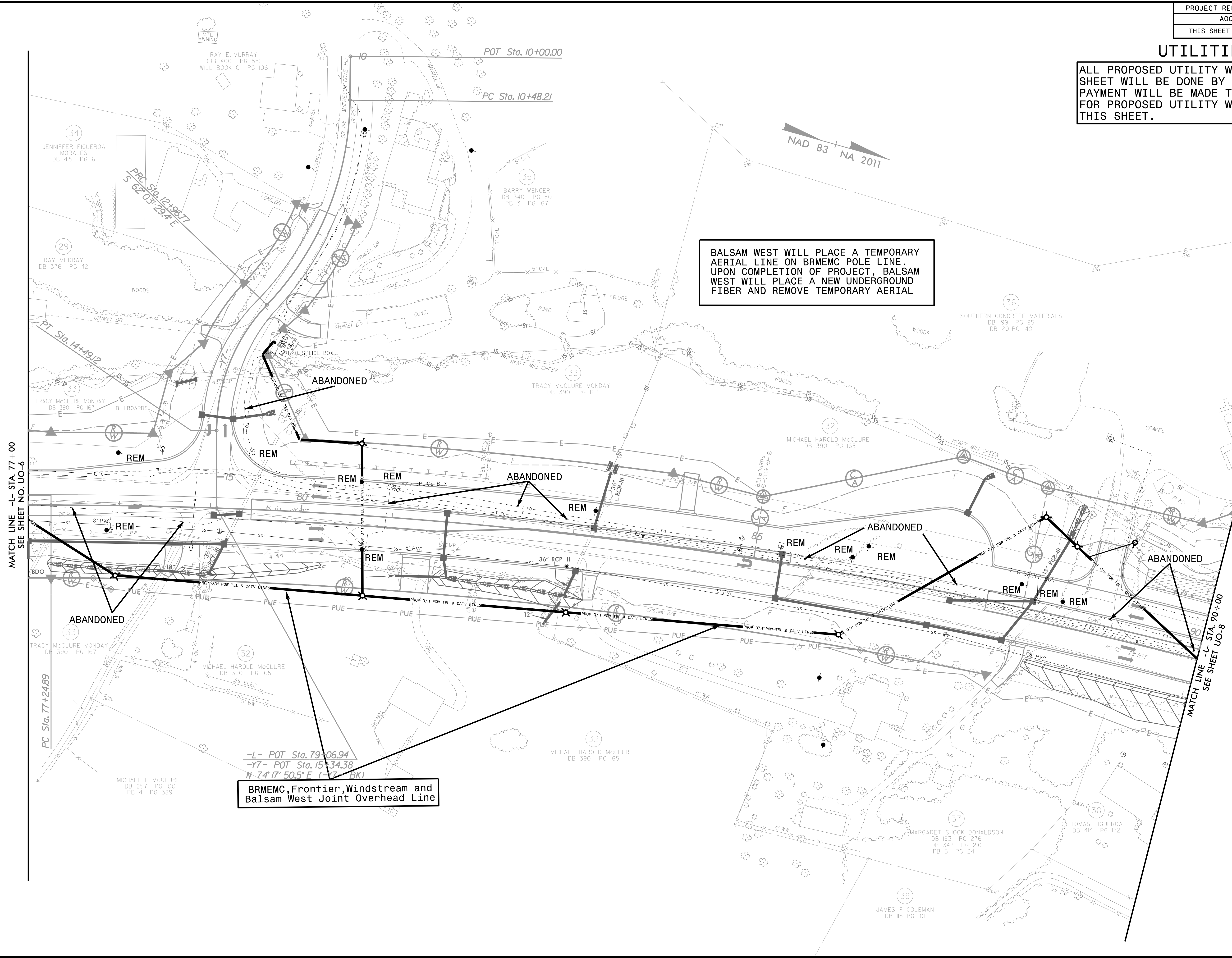


UTILITIES BY OTHERS

ALL PROPOSED UTILITY WORK SHOWN ON THIS SHEET WILL BE DONE BY OTHERS. NO PAYMENT WILL BE MADE TO THE CONTRACTOR FOR PROPOSED UTILITY WORK SHOWN ON THIS SHEET.

BALSAM WEST WILL PLACE A TEMPORARY AERIAL LINE ON BRMEMC POLE LINE. UPON COMPLETION OF PROJECT, BALSAM WEST WILL PLACE A NEW UNDERGROUND FIBER AND REMOVE TEMPORARY AERIAL

BRMEMC, Frontier, Windstream and Balsam West Joint Overhead Line

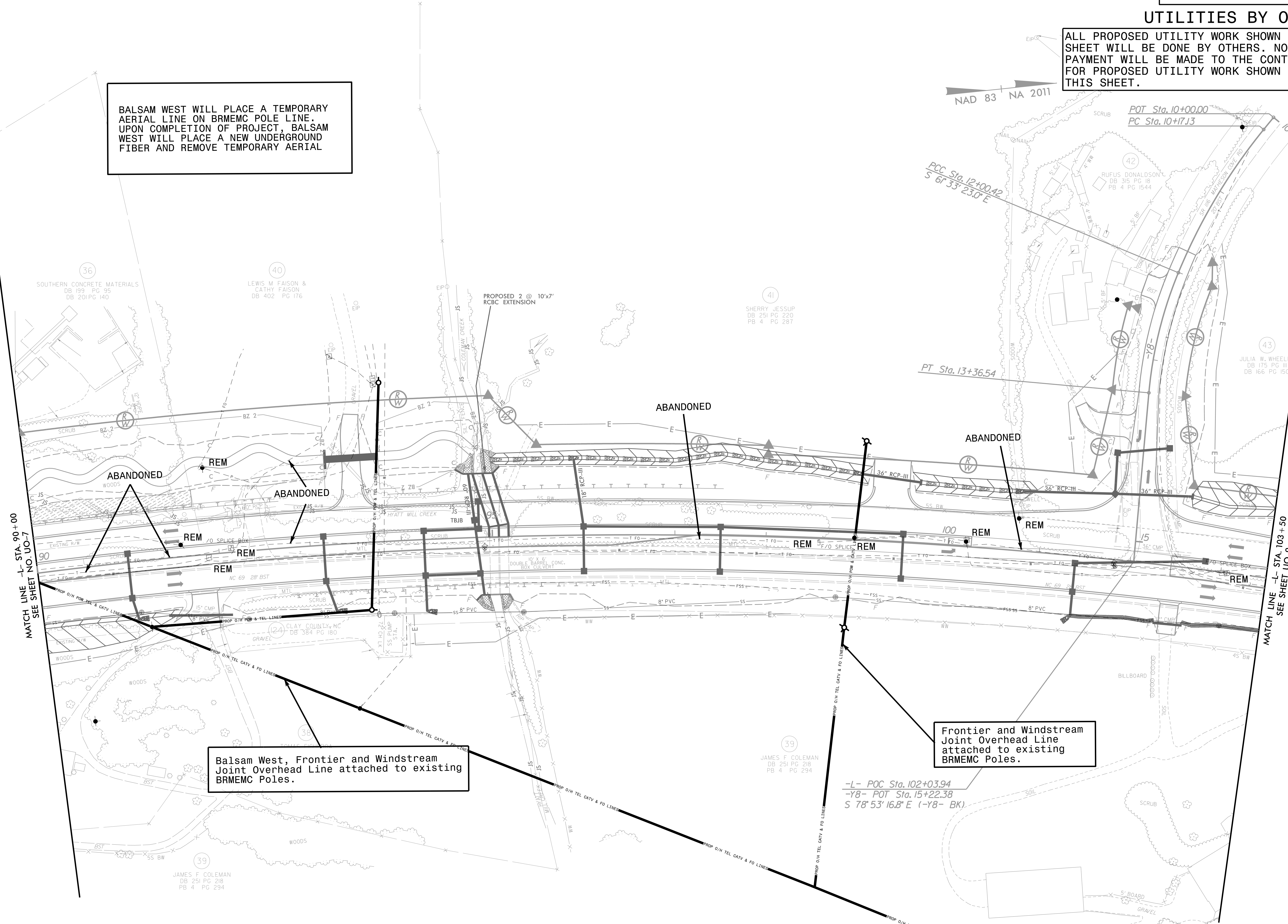
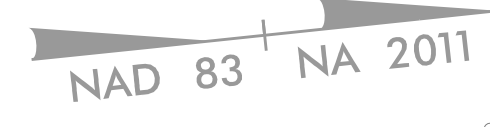


5/14/09
 7/1/08
 F:\085\0659\093\00211C\Utilities\Engineering\UBD\Proj\UBD_Submittal\290_018_A0011C_ut_rdy09_us07_psh.dgn
 5:28:30 PM

UTILITIES BY OTHERS

ALL PROPOSED UTILITY WORK SHOWN ON THIS SHEET WILL BE DONE BY OTHERS. NO PAYMENT WILL BE MADE TO THE CONTRACTOR FOR PROPOSED UTILITY WORK SHOWN ON THIS SHEET.

BALSAM WEST WILL PLACE A TEMPORARY AERIAL LINE ON BRMEMC POLE LINE. UPON COMPLETION OF PROJECT, BALSAM WEST WILL PLACE A NEW UNDERGROUND FIBER AND REMOVE TEMPORARY AERIAL



MATCH LINE -L- STA. 90+00
SEE SHEET NO. UD-7

MATCH LINE -L- STA. 103+50
SEE SHEET UD-9

Balsam West, Frontier and Windstream Joint Overhead Line attached to existing BRMEMC Poles.

Frontier and Windstream Joint Overhead Line attached to existing BRMEMC Poles.

-L- POC Sta. 102+03.94
-Y8- POT Sta. 15+22.38
S 78° 53' 16.8" E (-Y8- BK)

5/14/99
 F:\025\0659\093\A0011C\Utilities\Engineering\UBOX\Proj\290_021_A0011C.ut_r.dwg 10:08:08 psh.dgn
 7/3/05
 5/15/05

UTILITIES BY OTHERS

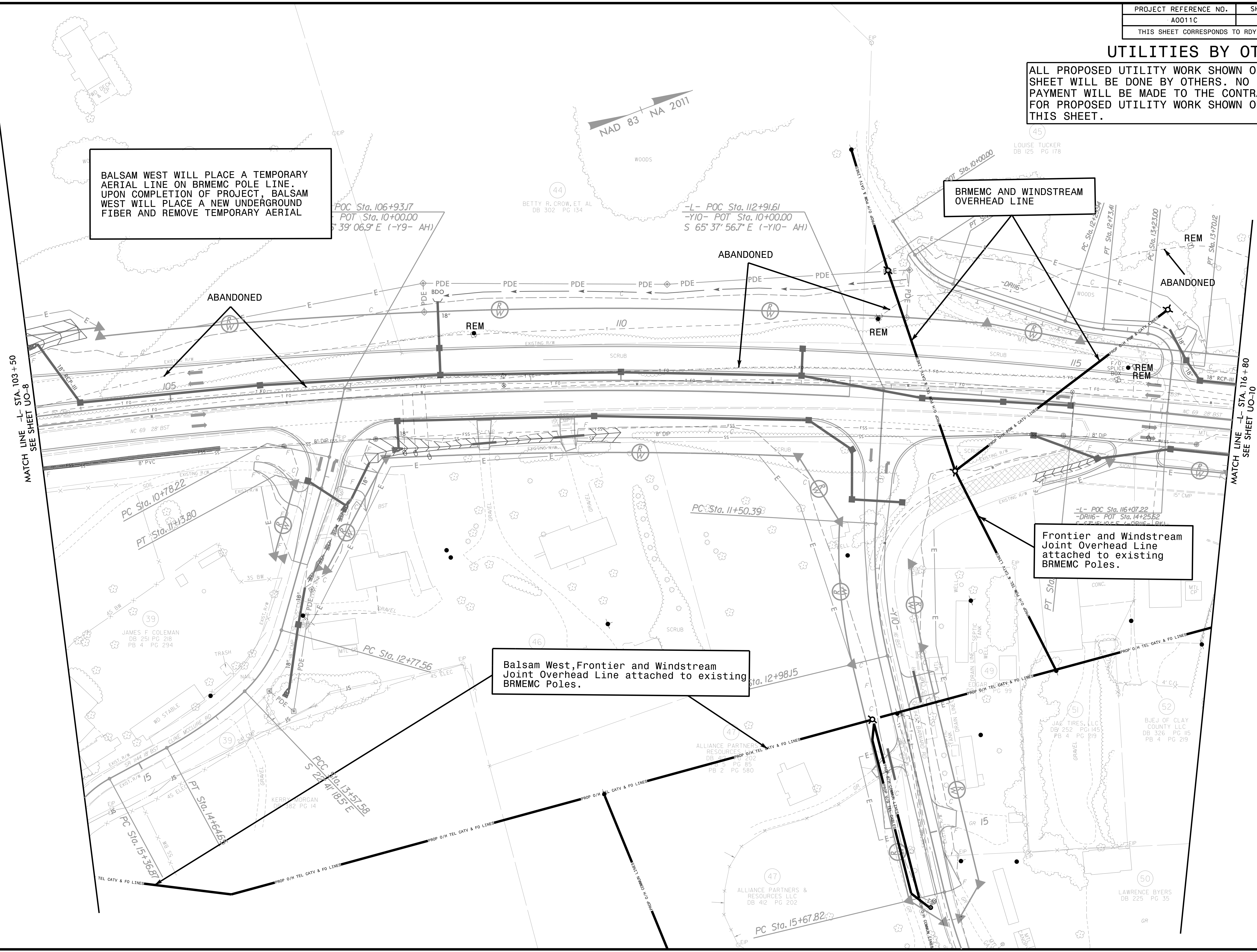
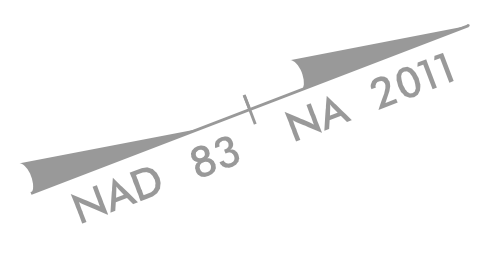
ALL PROPOSED UTILITY WORK SHOWN ON THIS SHEET WILL BE DONE BY OTHERS. NO PAYMENT WILL BE MADE TO THE CONTRACTOR FOR PROPOSED UTILITY WORK SHOWN ON THIS SHEET.

BALSAM WEST WILL PLACE A TEMPORARY AERIAL LINE ON BRMEMC POLE LINE. UPON COMPLETION OF PROJECT, BALSAM WEST WILL PLACE A NEW UNDERGROUND FIBER AND REMOVE TEMPORARY AERIAL

BRMEMC AND WINDSTREAM OVERHEAD LINE

Frontier and Windstream Joint Overhead Line attached to existing BRMEMC Poles.

Balsam West, Frontier and Windstream Joint Overhead Line attached to existing BRMEMC Poles.



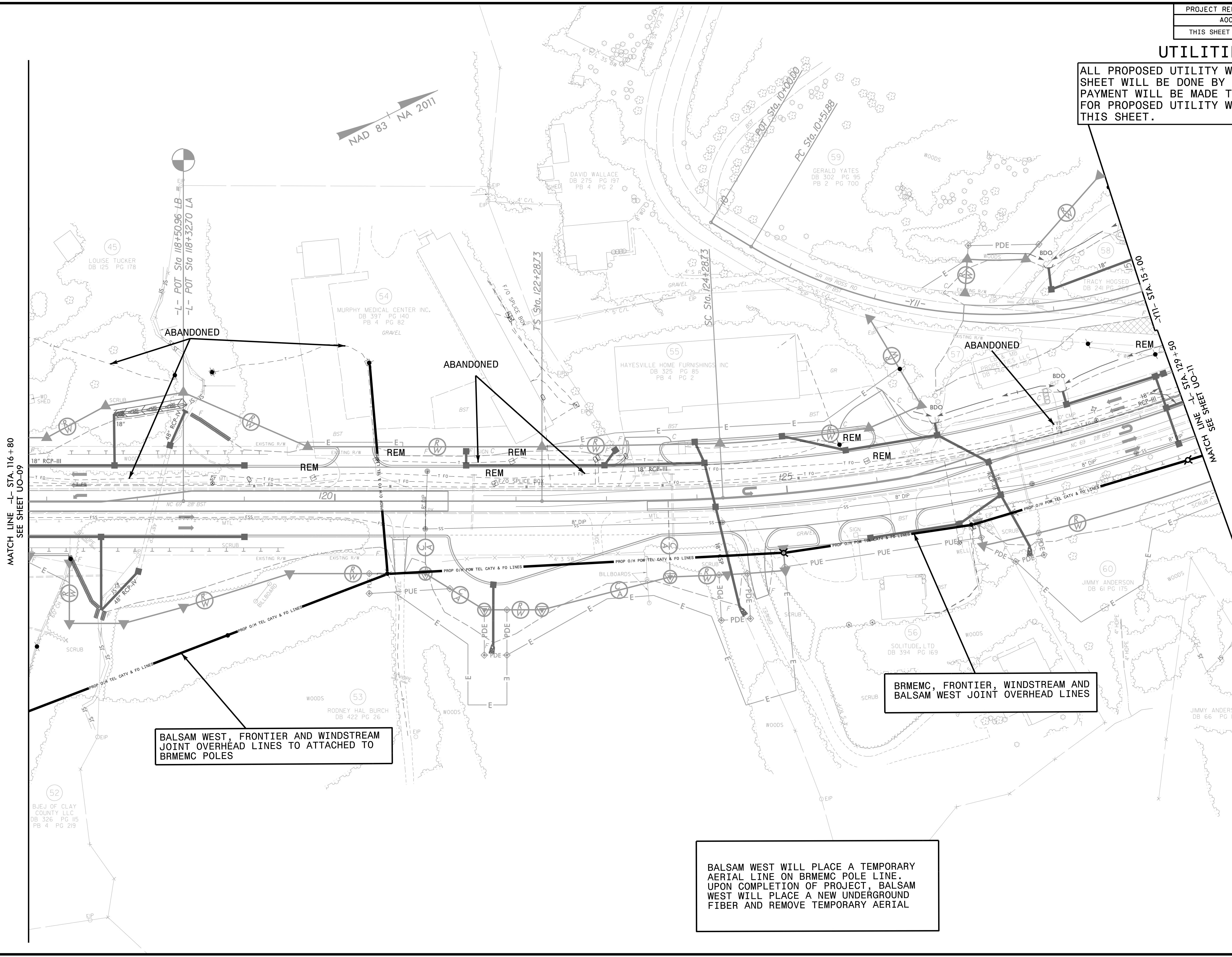
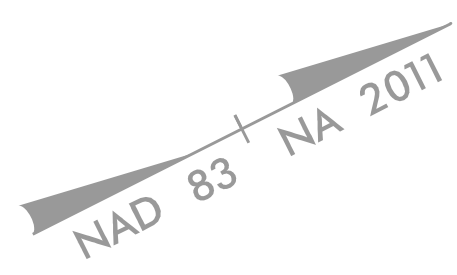
MATCH LINE -L- STA. 103+50
SEE SHEET UO-8

MATCH LINE -L- STA. 116+80
SEE SHEET UO-10

5/14/99
 7/1/08
 F:\085\0659\093\A0011C\Utilities\Engineering\UBD\Proj\UBD_Submittal\290_024_A0011C.ut_rdy11.uob9_psh.dgn

UTILITIES BY OTHERS

ALL PROPOSED UTILITY WORK SHOWN ON THIS SHEET WILL BE DONE BY OTHERS. NO PAYMENT WILL BE MADE TO THE CONTRACTOR FOR PROPOSED UTILITY WORK SHOWN ON THIS SHEET.



MATCH LINE -L- STA. 116 + 80
SEE SHEET UO-09

BALSAM WEST, FRONTIER AND WINDSTREAM JOINT OVERHEAD LINES TO ATTACHED TO BRMEMC POLES

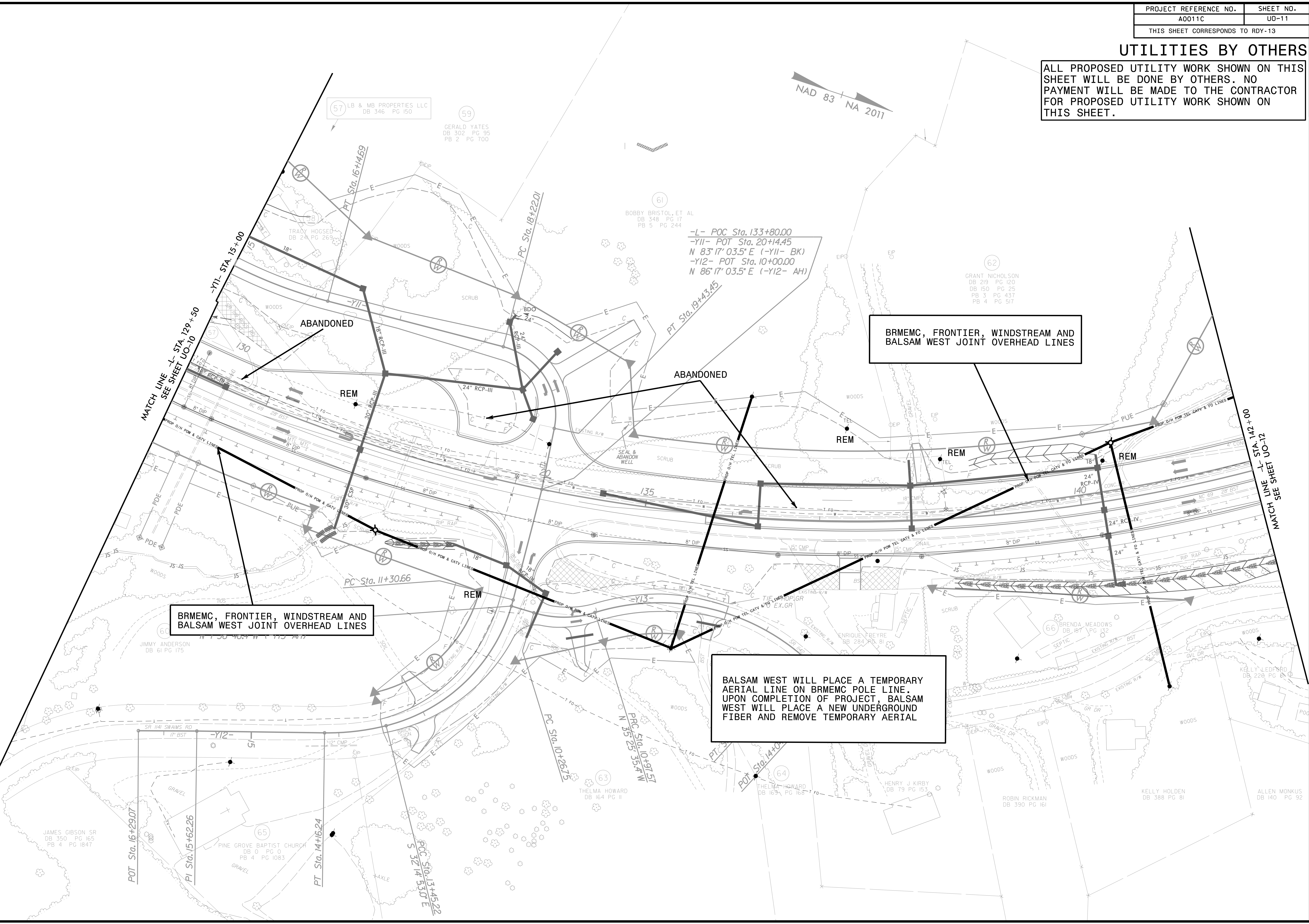
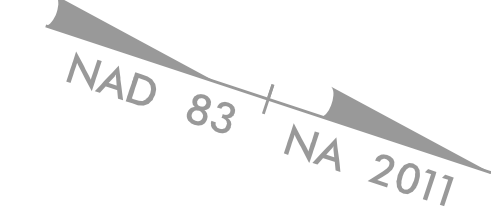
BRMEMC, FRONTIER, WINDSTREAM AND BALSAM WEST JOINT OVERHEAD LINES

BALSAM WEST WILL PLACE A TEMPORARY AERIAL LINE ON BRMEMC POLE LINE. UPON COMPLETION OF PROJECT, BALSAM WEST WILL PLACE A NEW UNDERGROUND FIBER AND REMOVE TEMPORARY AERIAL

5/14/99
 7/1/08
 F:\085\0659\093\A0011C\Utilities\Engineering\UBD\Proj\UBD_Submittal\290_027_A0011C.ctb\rdy12_uo10_psh.dgn
 5/14/08

UTILITIES BY OTHERS

ALL PROPOSED UTILITY WORK SHOWN ON THIS SHEET WILL BE DONE BY OTHERS. NO PAYMENT WILL BE MADE TO THE CONTRACTOR FOR PROPOSED UTILITY WORK SHOWN ON THIS SHEET.



BRMCMC, FRONTIER, WINDSTREAM AND BALSAM WEST JOINT OVERHEAD LINES

BRMCMC, FRONTIER, WINDSTREAM AND BALSAM WEST JOINT OVERHEAD LINES

BALSAM WEST WILL PLACE A TEMPORARY AERIAL LINE ON BRMCMC POLE LINE. UPON COMPLETION OF PROJECT, BALSAM WEST WILL PLACE A NEW UNDERGROUND FIBER AND REMOVE TEMPORARY AERIAL.

MATCH LINE - L- STA. 129+50
SEE SHEET U0-10

MATCH LINE - L- STA. 142+00
SEE SHEET U0-12

5/14/99
 F:\008\0659\093\A0011C\Utilities\Engineering\UBD\Proj\UBD_Submittal\290_030_A0011C.ctb\rdy13_u011_psh.dgn
 3/20/11 PN

UTILITIES BY OTHERS

ALL PROPOSED UTILITY WORK SHOWN ON THIS SHEET WILL BE DONE BY OTHERS. NO PAYMENT WILL BE MADE TO THE CONTRACTOR FOR PROPOSED UTILITY WORK SHOWN ON THIS SHEET.

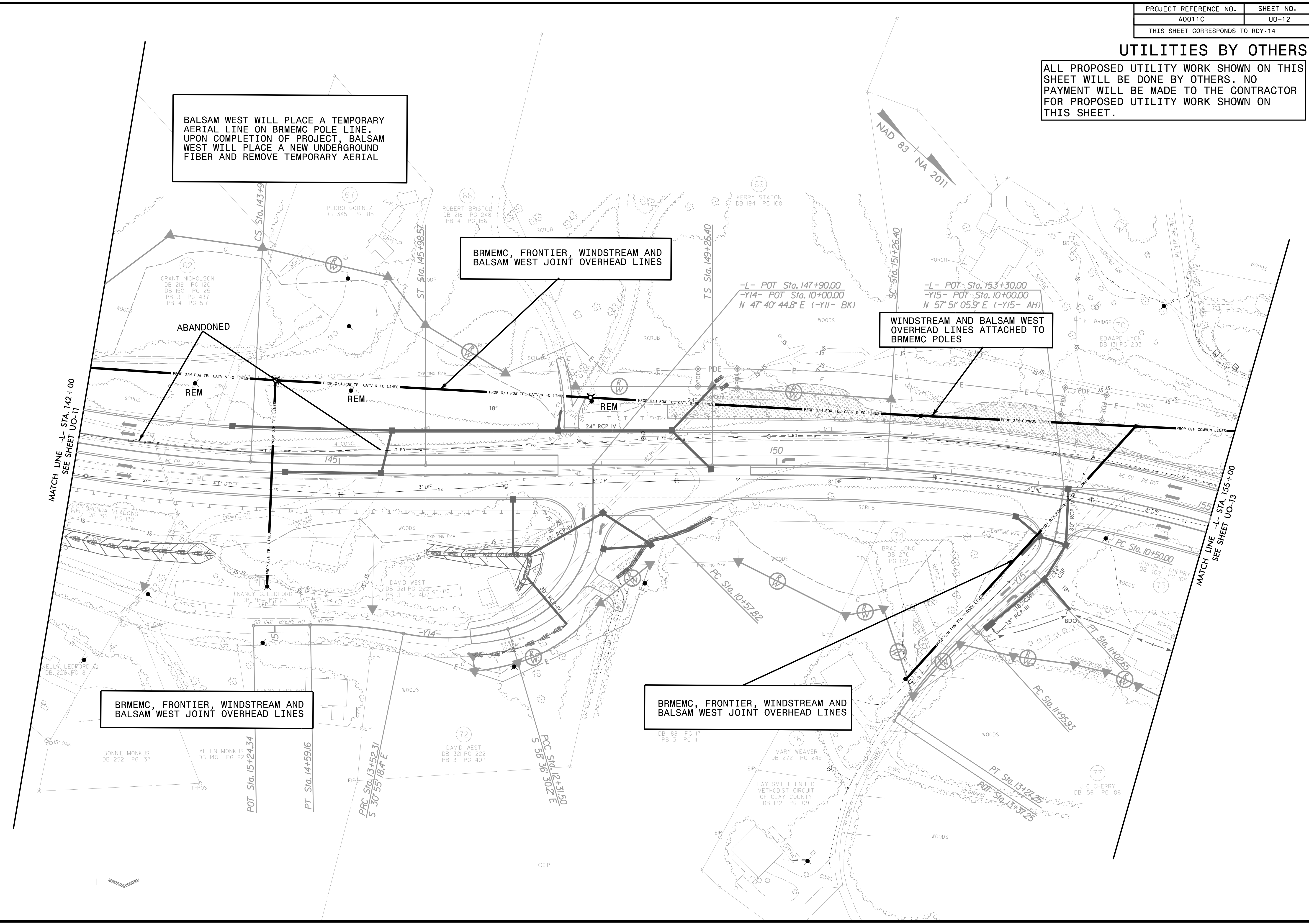
BALSAM WEST WILL PLACE A TEMPORARY AERIAL LINE ON BRMEMC POLE LINE. UPON COMPLETION OF PROJECT, BALSAM WEST WILL PLACE A NEW UNDERGROUND FIBER AND REMOVE TEMPORARY AERIAL

BRMEMC, FRONTIER, WINDSTREAM AND BALSAM WEST JOINT OVERHEAD LINES

WINDSTREAM AND BALSAM WEST OVERHEAD LINES ATTACHED TO BRMEMC POLES

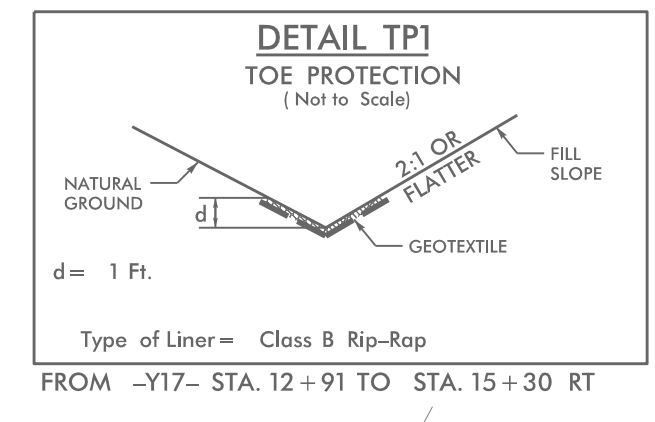
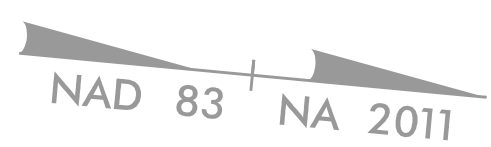
BRMEMC, FRONTIER, WINDSTREAM AND BALSAM WEST JOINT OVERHEAD LINES

BRMEMC, FRONTIER, WINDSTREAM AND BALSAM WEST JOINT OVERHEAD LINES



UTILITIES BY OTHERS

ALL PROPOSED UTILITY WORK SHOWN ON THIS SHEET WILL BE DONE BY OTHERS. NO PAYMENT WILL BE MADE TO THE CONTRACTOR FOR PROPOSED UTILITY WORK SHOWN ON THIS SHEET.



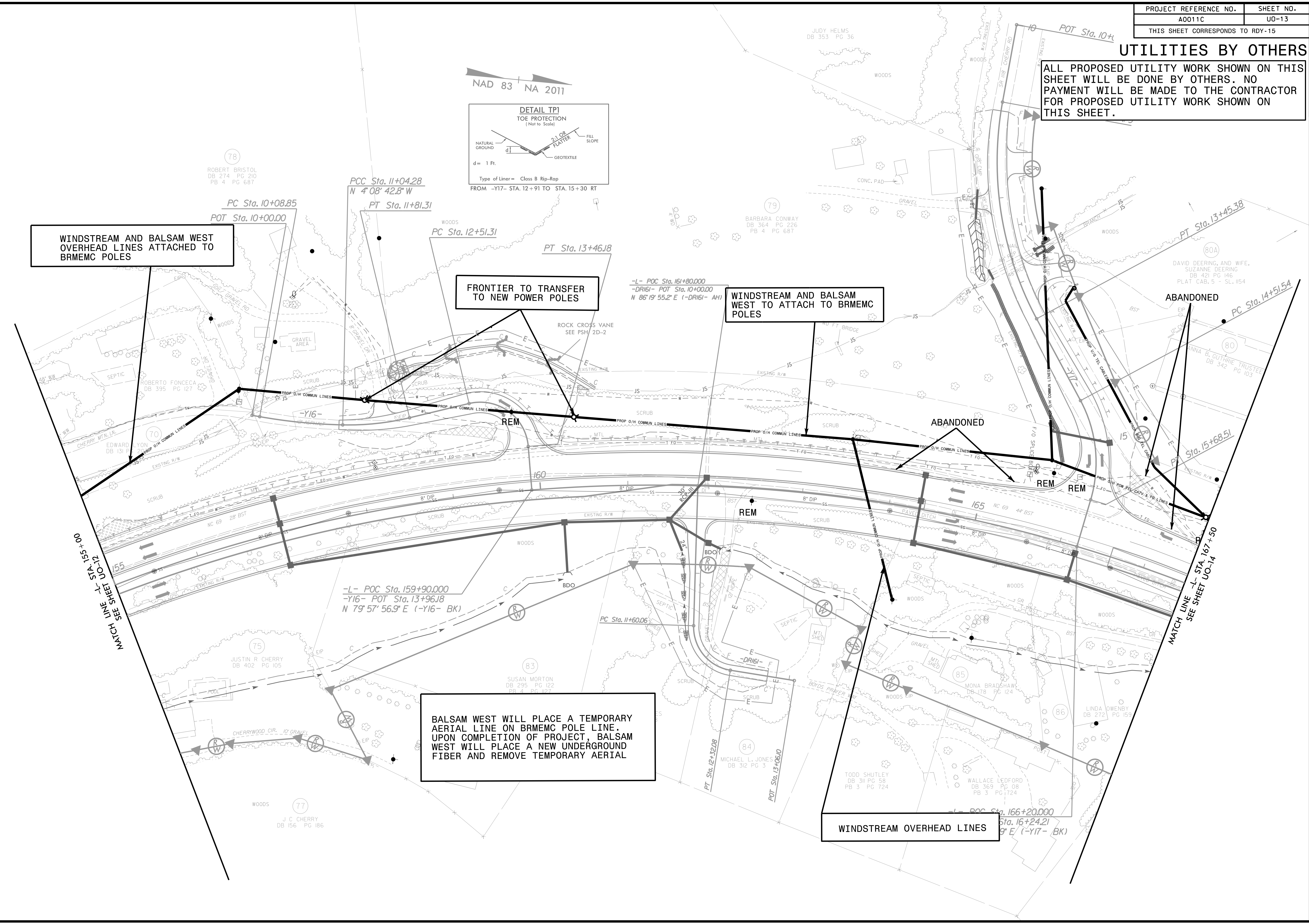
WINDSTREAM AND BALSAM WEST OVERHEAD LINES ATTACHED TO BRMEMC POLES

FRONTIER TO TRANSFER TO NEW POWER POLES

WINDSTREAM AND BALSAM WEST TO ATTACH TO BRMEMC POLES

BALSAM WEST WILL PLACE A TEMPORARY AERIAL LINE ON BRMEMC POLE LINE. UPON COMPLETION OF PROJECT, BALSAM WEST WILL PLACE A NEW UNDERGROUND FIBER AND REMOVE TEMPORARY AERIAL

WINDSTREAM OVERHEAD LINES



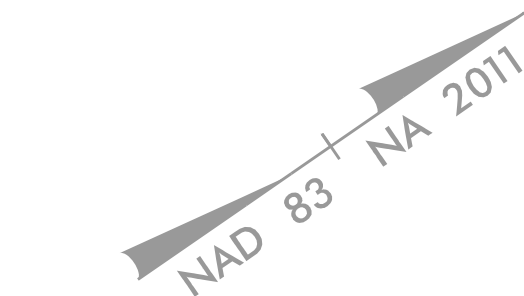
5/14/99
 F:\003\0659\093\00011C\Utilities\Engineering\UBD\Proj\UBD_Submittal\290_036_A0011C.ut_rdy15_uo13_psh.dgn
 3:25:38 PM

UTILITIES BY OTHERS

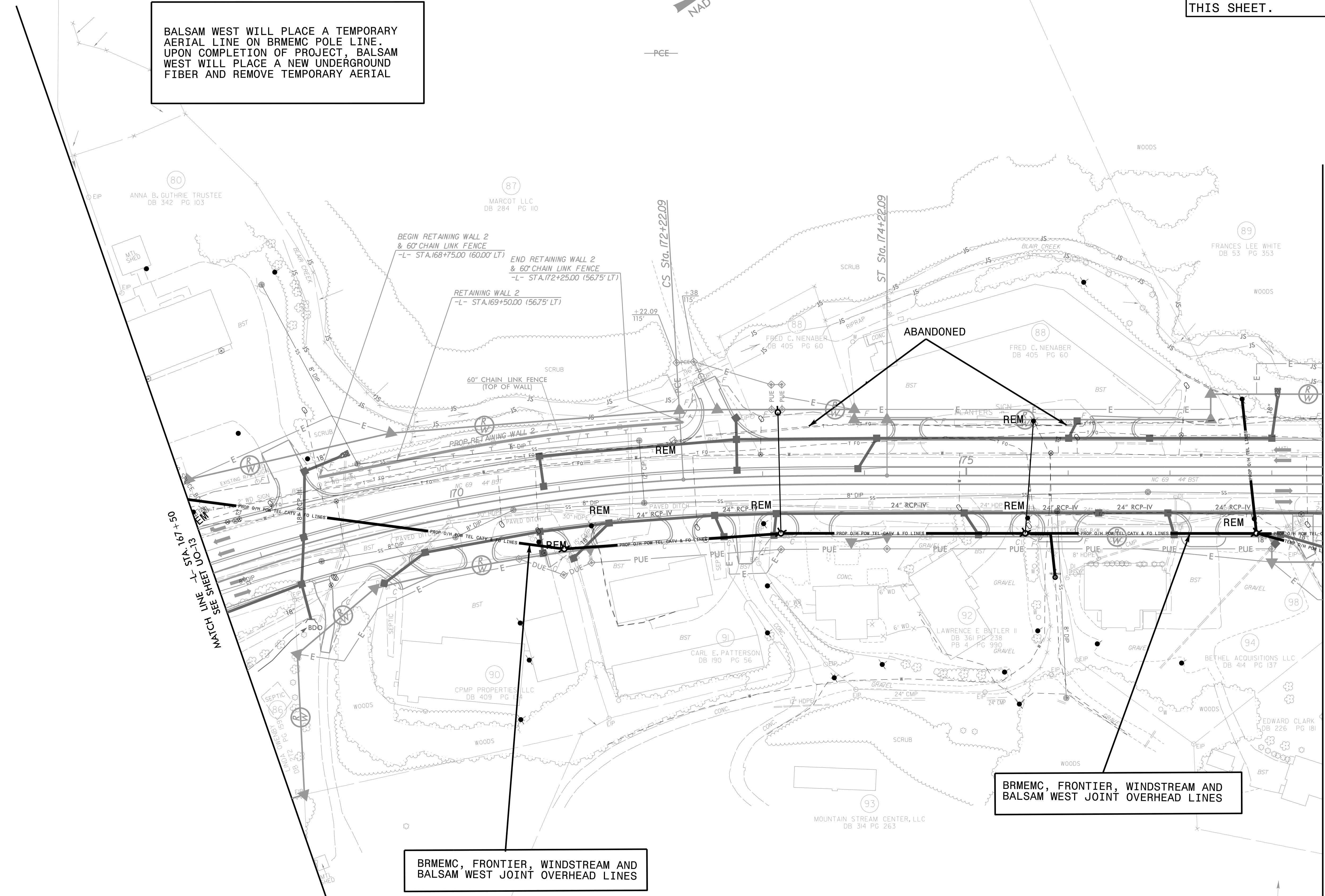
ALL PROPOSED UTILITY WORK SHOWN ON THIS SHEET WILL BE DONE BY OTHERS. NO PAYMENT WILL BE MADE TO THE CONTRACTOR FOR PROPOSED UTILITY WORK SHOWN ON THIS SHEET.

80A
DAVID DEERING, AND WIFE,
SUZANNE DEERING
DB 421 PG 146
PLAT CAB. 5 - SL. 1154

BALSAM WEST WILL PLACE A TEMPORARY AERIAL LINE ON BRMEMC POLE LINE. UPON COMPLETION OF PROJECT, BALSAM WEST WILL PLACE A NEW UNDERGROUND FIBER AND REMOVE TEMPORARY AERIAL



5/14/99
 F:\008\0659\093\A0011C\Utilities\Engineering\UBD\Proj\UBD_Submittal\290_039_A0011C.ut_rdy16_uo14_psh.dgn
 4/21/2016 10:23:28 AM



MATCH LINE SEE SHEET UO-13

MATCH LINE -L- STA. 178 + 50
SEE SHEET UO-15

BRMEMC, FRONTIER, WINDSTREAM AND BALSAM WEST JOINT OVERHEAD LINES

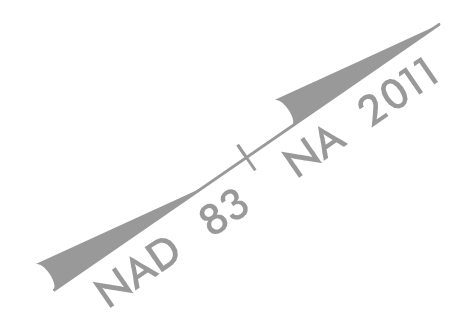
BRMEMC, FRONTIER, WINDSTREAM AND BALSAM WEST JOINT OVERHEAD LINES

HARRY HART
DB 273 PG 222

98
FRANCIS H GARRETT
LIFE ESTATE
DB 406 PG 73

UTILITIES BY OTHERS

ALL PROPOSED UTILITY WORK SHOWN ON THIS SHEET WILL BE DONE BY OTHERS. NO PAYMENT WILL BE MADE TO THE CONTRACTOR FOR PROPOSED UTILITY WORK SHOWN ON THIS SHEET.

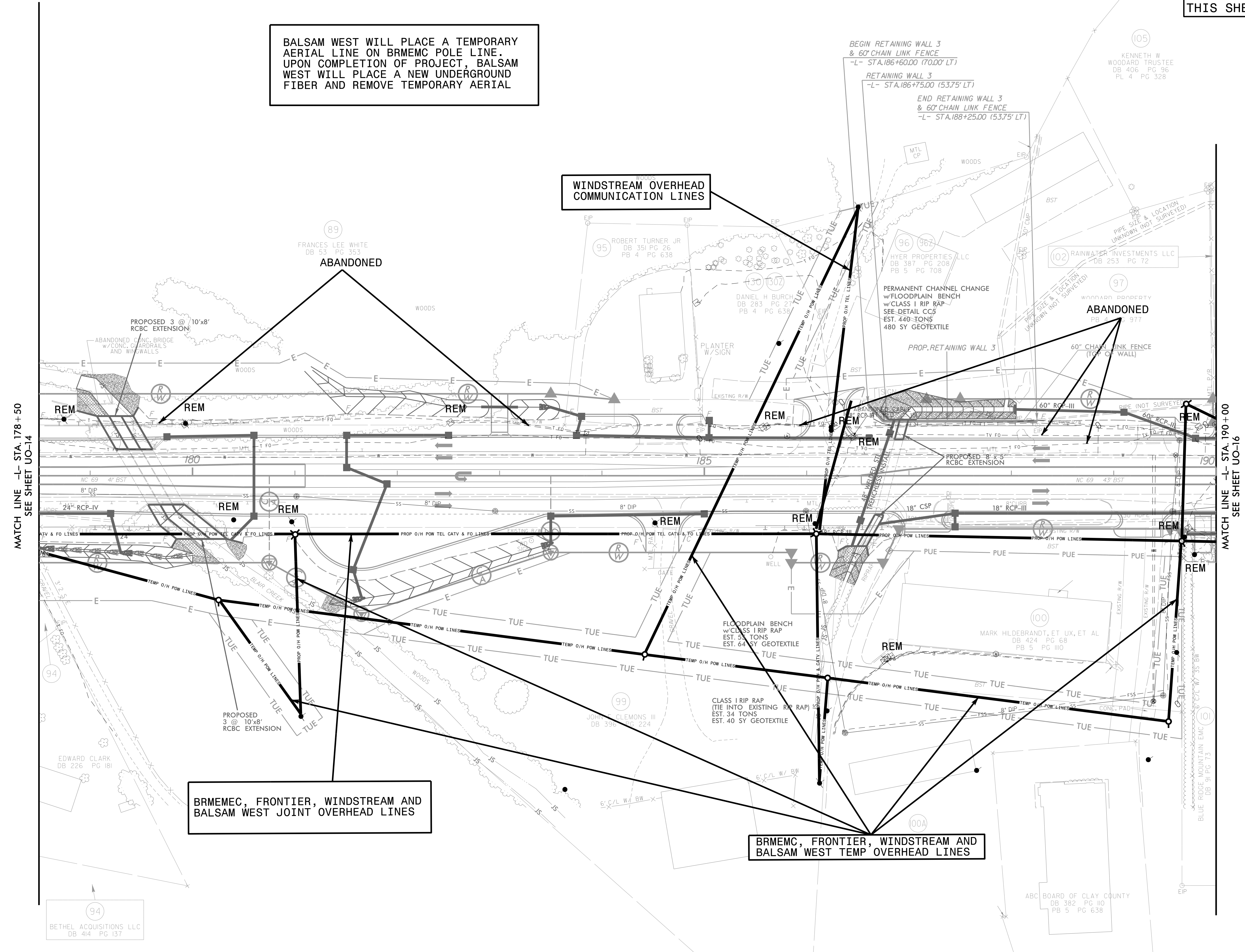


BALSAM WEST WILL PLACE A TEMPORARY AERIAL LINE ON BRMEMC POLE LINE. UPON COMPLETION OF PROJECT, BALSAM WEST WILL PLACE A NEW UNDERGROUND FIBER AND REMOVE TEMPORARY AERIAL

WINDSTREAM OVERHEAD COMMUNICATION LINES

BRMEMC, FRONTIER, WINDSTREAM AND BALSAM WEST JOINT OVERHEAD LINES

BRMEMC, FRONTIER, WINDSTREAM AND BALSAM WEST TEMP OVERHEAD LINES



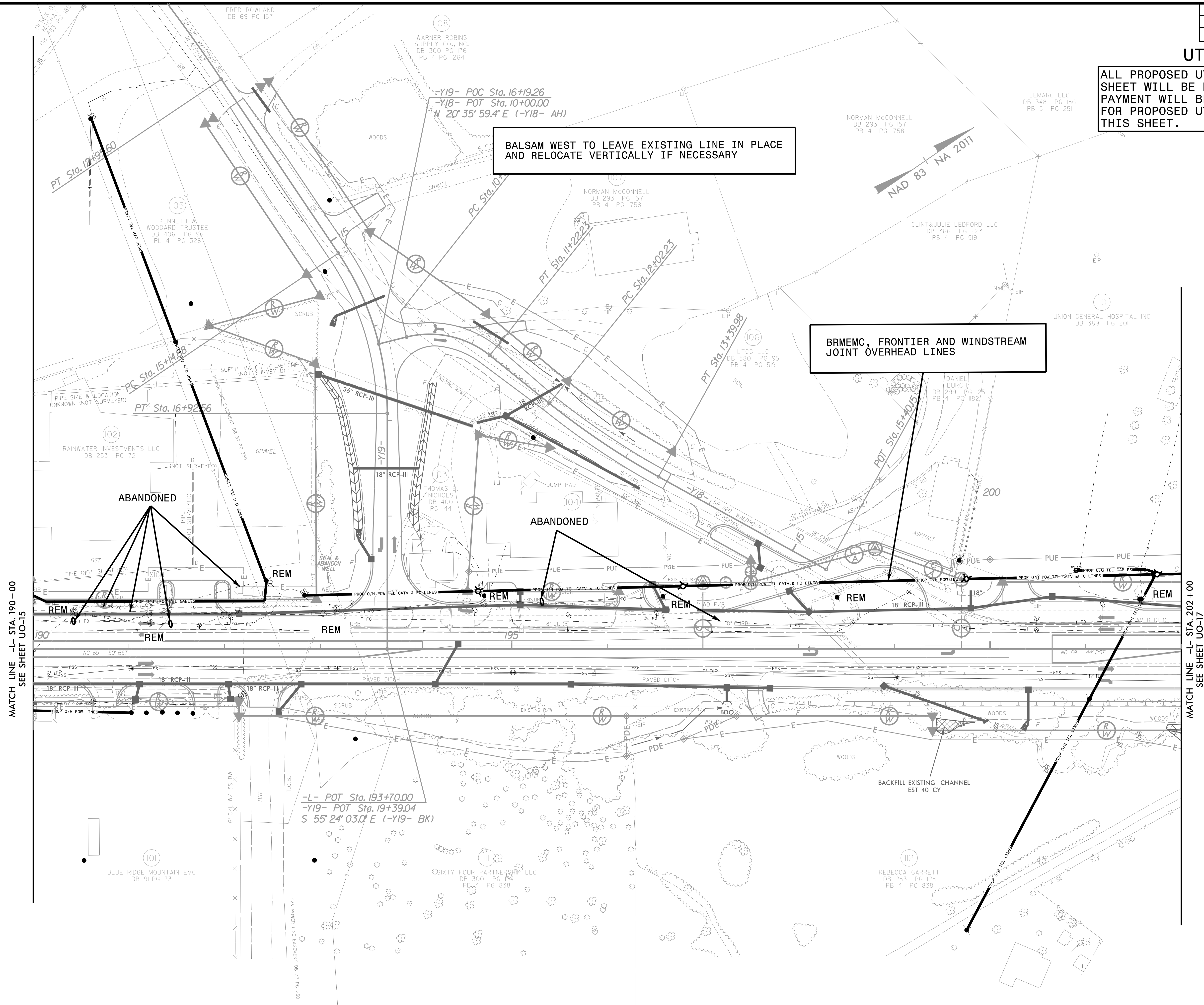
MATCH LINE -L- STA. 178+50
SEE SHEET UD-14

MATCH LINE -L- STA. 190+00
SEE SHEET UD-16

5/14/2017
 P:\00000000\0659\093\A0011C\Utilities\Engineering\UBD\Proj\UBD_Submittal\290_042_A0011C.ctb\17_uo15_psh.dgn
 4:28:10 PM

UTILITIES BY OTHERS

ALL PROPOSED UTILITY WORK SHOWN ON THIS SHEET WILL BE DONE BY OTHERS. NO PAYMENT WILL BE MADE TO THE CONTRACTOR FOR PROPOSED UTILITY WORK SHOWN ON THIS SHEET.



BALSAM WEST TO LEAVE EXISTING LINE IN PLACE AND RELOCATE VERTICALLY IF NECESSARY

BRMEMC, FRONTIER AND WINDSTREAM JOINT OVERHEAD LINES

MATCH LINE -L- STA. 190+00
SEE SHEET UO-15

MATCH LINE -L- STA. 202+00
SEE SHEET UO-17

-L- POT Sta. 193+70.00
-Y19- POT Sta. 19+39.04
S 55° 24' 03.0\"/>

5/14/99
 F:\0085\0659\093\A0011C\Utilities\Engineering\UBD\Proj\UBD_Submittal\290_045_A0011C.ut_rdy18_uo16_psh.dgn
 4/20/07

UTILITIES BY OTHERS

ALL PROPOSED UTILITY WORK SHOWN ON THIS SHEET WILL BE DONE BY OTHERS. NO PAYMENT WILL BE MADE TO THE CONTRACTOR FOR PROPOSED UTILITY WORK SHOWN ON THIS SHEET.

BALSAM WEST TO LEAVE EXISTING LINE IN PLACE AND RELOCATE VERTICALLY IN FIELD IF NECESSARY

BRMEMC, FRONTIER AND WINDSTREAM JOINT OVERHEAD LINES

BRMEMC, FRONTIER AND WINDSTREAM JOINT OVERHEAD LINES

BRMEMC, FRONTIER AND WINDSTREAM JOINT OVERHEAD LINES

ABANDONED

ABANDONED

BRMEMC AND FRONTIER AERIAL POWER AND PHONE

ABANDONED

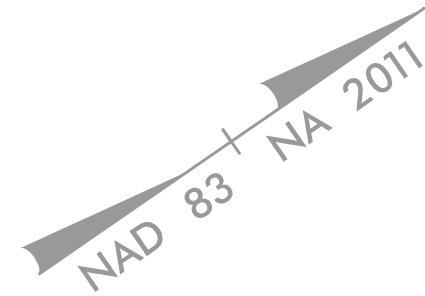
FRONTIER TO SET NEW LIFT POLE TO PICK UP BURIED SERVICE WIRES FROM EXISTING PEDESTAL

BRMEMC, FRONTIER AND WINDSTREAM JOINT OVERHEAD LINES

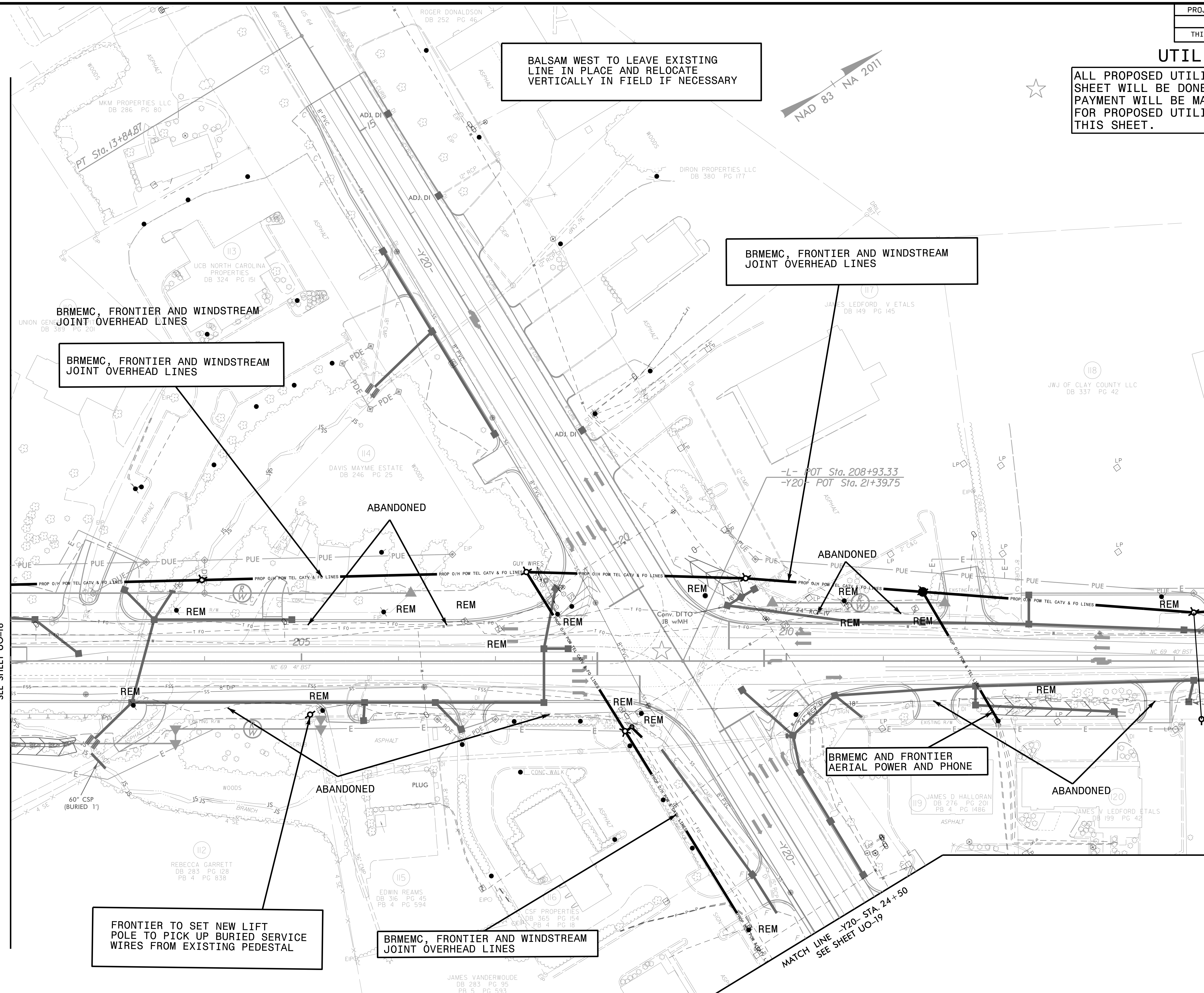
MATCH LINE -L- STA. 24+50
SEE SHEET UO-19

MATCH LINE -L- STA. 202+00
SEE SHEET UO-16

MATCH LINE -L- STA. 214+50
SEE SHEET UO-18

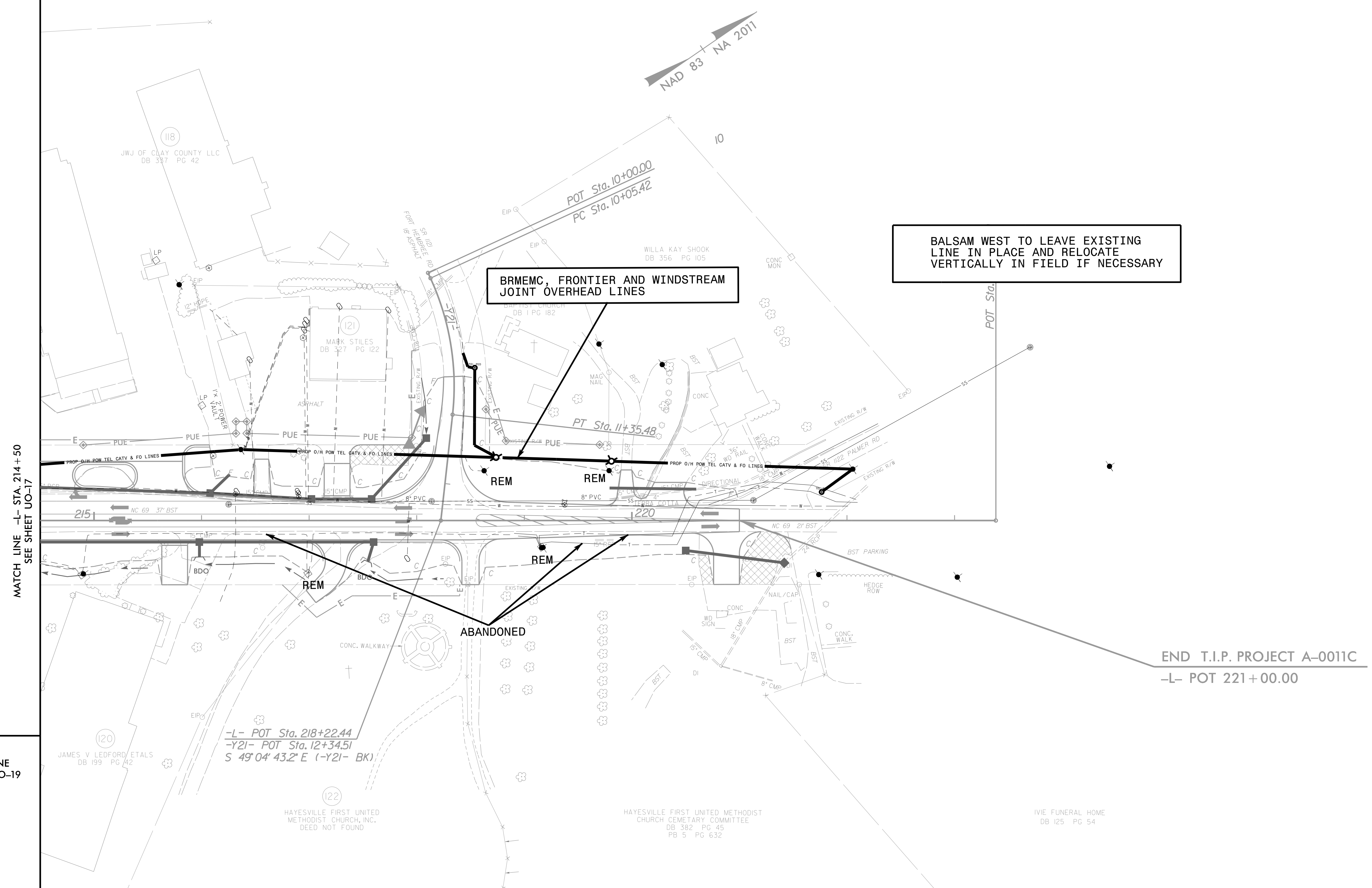


5/14/99
 F:\0085\0659\093\00011C\Utilities\Engineering\UBD\Proj\UBD_Submittal\290_048_A0011C.ut_rdy19_uo17_psh.dgn
 4/2/2016 10:42:56 AM



UTILITIES BY OTHERS

ALL PROPOSED UTILITY WORK SHOWN ON THIS SHEET WILL BE DONE BY OTHERS. NO PAYMENT WILL BE MADE TO THE CONTRACTOR FOR PROPOSED UTILITY WORK SHOWN ON THIS SHEET.



BRMEMC, FRONTIER AND WINDSTREAM JOINT OVERHEAD LINES

BALSAM WEST TO LEAVE EXISTING LINE IN PLACE AND RELOCATE VERTICALLY IN FIELD IF NECESSARY

MATCH LINE -L- STA. 214+50
SEE SHEET UO-17

MATCH LINE
SEE SHEET UO-19

END T.I.P. PROJECT A-0011C
-L- POT 221+00.00

5/14/99
 F:\008\0659\093\A0011C\Utilities\Engineering\UBD\Proj\UBD_Submittal\290_051_A0011C-ut-rdy20-uo18_psh.dgn
 4:25:18 PM

PROJECT REFERENCE NO.	SHEET NO.
A0011C	UD-19
THIS SHEET CORRESPONDS TO RDY-21	

UTILITIES BY OTHERS

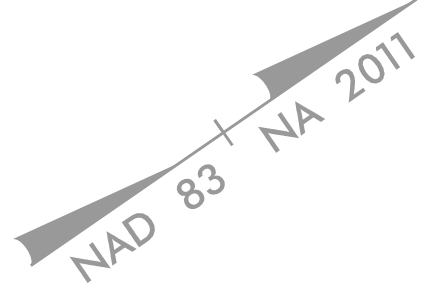
ALL PROPOSED UTILITY WORK SHOWN ON THIS SHEET WILL BE DONE BY OTHERS. NO PAYMENT WILL BE MADE TO THE CONTRACTOR FOR PROPOSED UTILITY WORK SHOWN ON THIS SHEET.

MATCH LINE
SEE SHEET UO-18

MATCH LINE -Y20- STA. 24+50
SEE SHEET UO-17

BRMEMC, FRONTIER AND WINDSTREAM
JOINT OVERHEAD LINES

BALSAM WEST TO LEAVE EXISTING
LINE IN PLACE AND RELOCATE
VERTICALLY IN FIELD IF NECESSARY



REBECCA GARRETT
DB 283 PG 128
PB 4 PG 838

JAMES WANDERWOUDE
DB 283 PG 95
PB 5 PG 593

RAYMOND COTTON
DB 379 PG 244
PB 5 PG 593

HARDSTONE HAYESVILLE LLC
DB 382 PG 57
PB 5 PG 635

HOSPITALITY FOOD SERVICE LLC
DB 385 PG 174
PB 5 PG 666

122
HAYESVILLE FIRST UNITED
METHODIST CHURCH, INC.
DEED NOT FOUND

HAYESVILLE FIRST UNITED
METHODIST CHURCH
CEMETARY COMMITTEE
DB 382 PG 45
PB 5 PG 632

STATE EMPLOYEES CREDIT UNION
DB 368 PG 22
PB 3 PG 539

POT Sta. 31+72.80

5/14/99
 7:\008\0659\093\A0011C\Utilities\Engineering\UBD\Proj\UBD_Submittal\290_054_A0011C.ut_rdy21_uo19_psh.dgn
 4/27/13 PM