

**This electronic collection of documents is provided
for the convenience of the user
and is Not a Certified Document –**

**The documents contained herein were originally issued
and sealed by the individuals whose names and license
numbers appear on each page, on the dates appearing
with their signature on that page.**

**This file or an individual page
shall not be considered a certified document.**

PROJECT REFERENCE NO.	SHEET NO.
A-0011C	RW02C-1
Location and Surveys	
LOCATION AND SURVEYS, DIVISION 14 122 BONNIE LANE SYLVA, NC 28779	

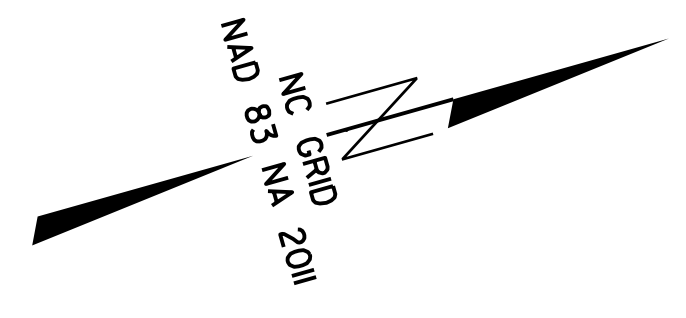
SURVEY CONTROL SHEET

W/ EXISTING CENTERLINE ALIGNMENTS PRIOR TO CONSTRUCTION

SEE SHEETS RW02C-21
THROUGH RW02C-23
FOR FURTHER
ALIGNMENT DETAILS

REVISIONS

Q:\NOV-2008\13457\0011C\RW_Sheets\Brien\0011c_1s-rw02c-1.dgn
C:\Users\jwh\OneDrive\Documents\0011c_1s-rw02c-1.dgn



GPS-102

BM*1



NOTES:

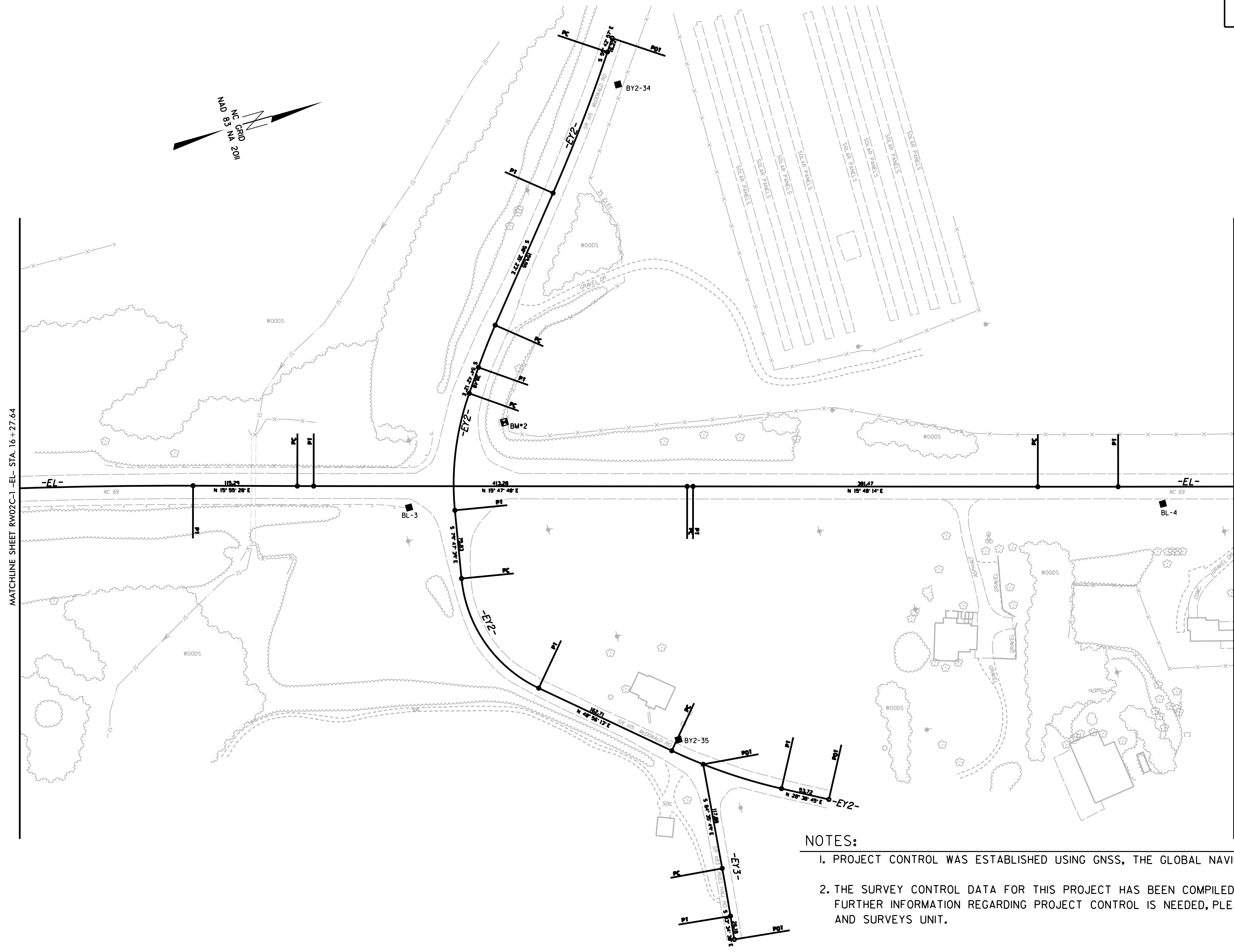
1. PROJECT CONTROL WAS ESTABLISHED USING GNSS, THE GLOBAL NAVIGATION SATELLITE SYSTEM.
2. THE SURVEY CONTROL DATA FOR THIS PROJECT HAS BEEN COMPILED FROM VARIOUS SOURCES. IF FURTHER INFORMATION REGARDING PROJECT CONTROL IS NEEDED, PLEASE CONTACT THE LOCATION AND SURVEYS UNIT.

PROJECT REFERENCE NO.	SHEET NO.
A-0011C	RW02C-2
Location and Surveys	
LOCATION AND SURVEYS, DIVISION 14 122 BONNIE LANE SYLVIA, NC 28779	

SURVEY CONTROL SHEET

W/EXISTING CENTERLINE ALIGNMENTS PRIOR TO CONSTRUCTION

SEE SHEETS RW02C-21
THROUGH RW02C-23
FOR FURTHER
ALIGNMENT DETAILS



NOTES:

1. PROJECT CONTROL WAS ESTABLISHED USING GNSS, THE GLOBAL NAVIGATION SATELLITE SYSTEM.
2. THE SURVEY CONTROL DATA FOR THIS PROJECT HAS BEEN COMPILED FROM VARIOUS SOURCES. IF FURTHER INFORMATION REGARDING PROJECT CONTROL IS NEEDED, PLEASE CONTACT THE LOCATION AND SURVEYS UNIT.

REVISIONS

6/2/09

Q:\NOV-2018 13456
C:\asdw\work\proj\0011c\0011c-1s-rw02c-2.dgn
C:\asdw\work\proj\0011c\0011c-1s-rw02c-2.dgn

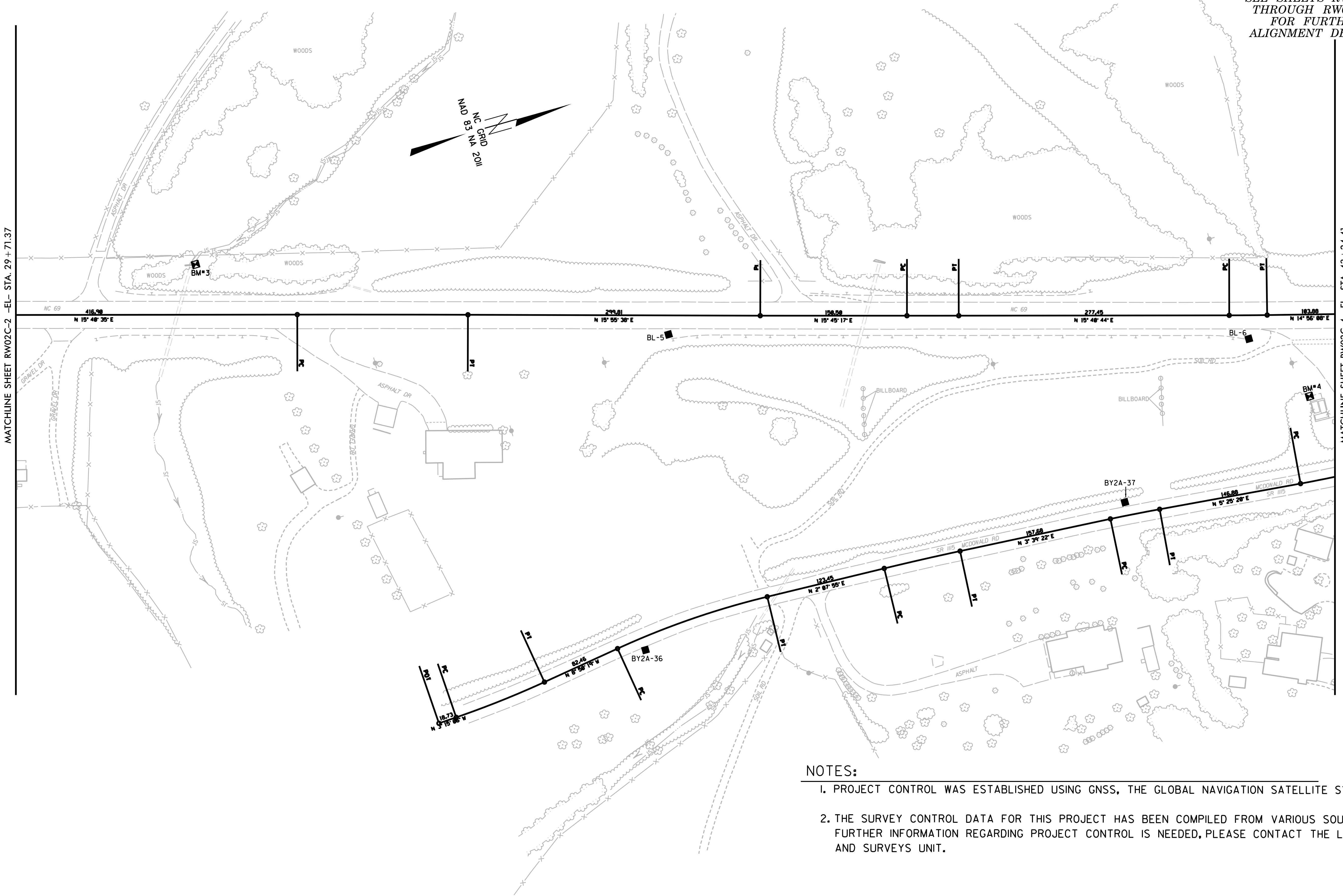
6/2/09

SURVEY CONTROL SHEET

W/ EXISTING CENTERLINE ALIGNMENTS PRIOR TO CONSTRUCTION

PROJECT REFERENCE NO.	SHEET NO.
A-0011C	RW02C-3
Location and Surveys	
LOCATION AND SURVEYS, DIVISION 14 122 BONNIE LANE SYLVA, NC 28779	

SEE SHEETS RW02C-21
THROUGH RW02C-23
FOR FURTHER
ALIGNMENT DETAILS



MATCHLINE SHEET RW02C-2 -EL- STA. 29 + 71.37

MATCHLINE SHEET RW02C-4 -EL- STA. 43 + 24.41

NOTES:

1. PROJECT CONTROL WAS ESTABLISHED USING GNSS, THE GLOBAL NAVIGATION SATELLITE SYSTEM.
2. THE SURVEY CONTROL DATA FOR THIS PROJECT HAS BEEN COMPILED FROM VARIOUS SOURCES. IF FURTHER INFORMATION REGARDING PROJECT CONTROL IS NEEDED, PLEASE CONTACT THE LOCATION AND SURVEYS UNIT.

REVISIONS

07-NOV-2018 13:58
C:\asdw\proj\0011c\0011c_sheets\Brien\0011c_ls_rw02c-3.dgn
C:\asdw\proj\0011c\0011c.dgn

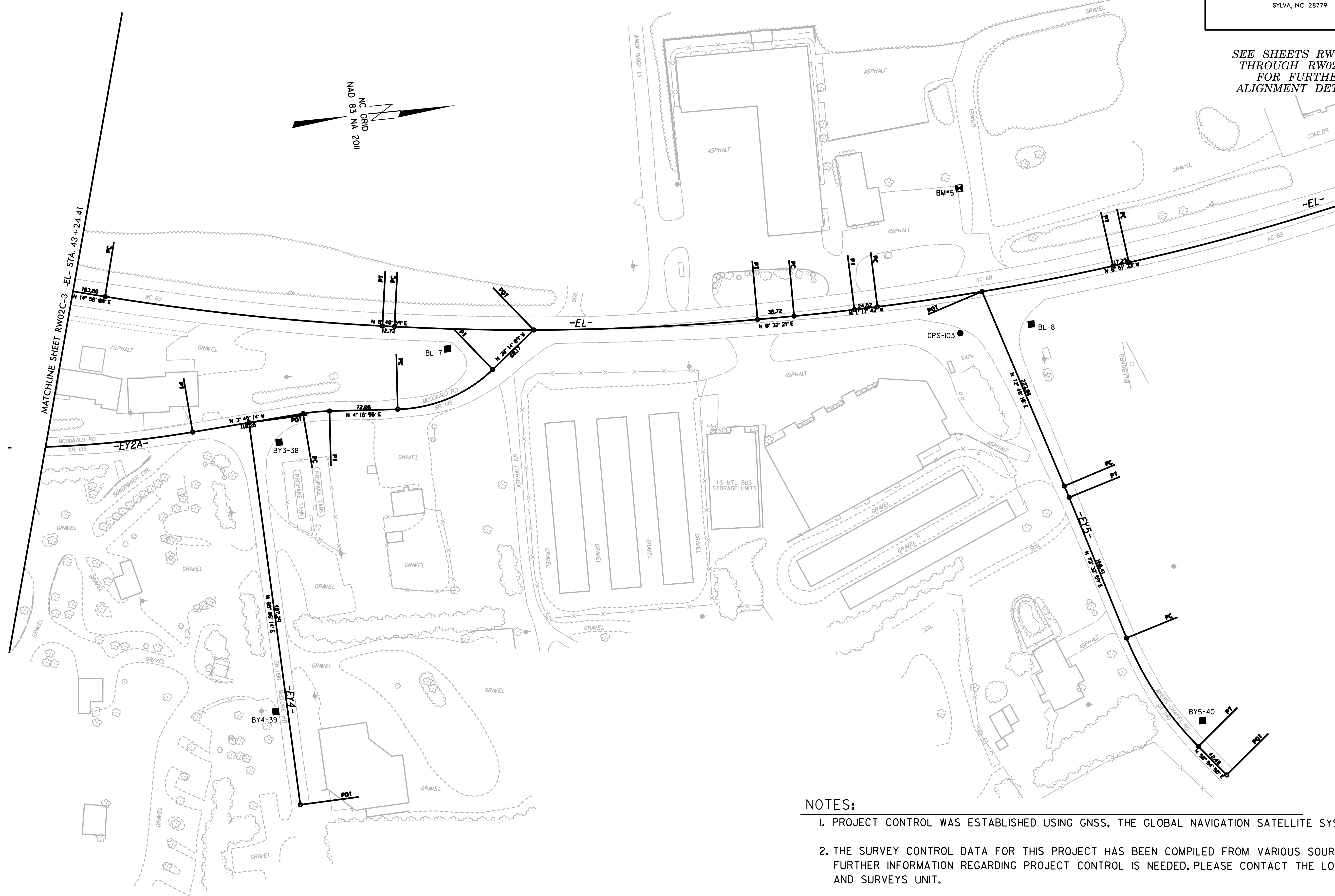
6/2/19

PROJECT REFERENCE NO.	SHEET NO.
A-0011C	RW02C-4
Location and Surveys	
LOCATION AND SURVEYS, DIVISION 14 122 BONNIE LANE SYLVA, NC 28779	

SURVEY CONTROL SHEET

W/EXISTING CENTERLINE ALIGNMENTS PRIOR TO CONSTRUCTION

SEE SHEETS RW02C-21
THROUGH RW02C-23
FOR FURTHER
ALIGNMENT DETAILS



NOTES:

- 1. PROJECT CONTROL WAS ESTABLISHED USING GNSS, THE GLOBAL NAVIGATION SATELLITE SYSTEM.
- 2. THE SURVEY CONTROL DATA FOR THIS PROJECT HAS BEEN COMPILED FROM VARIOUS SOURCES. IF FURTHER INFORMATION REGARDING PROJECT CONTROL IS NEEDED, PLEASE CONTACT THE LOCATION AND SURVEYS UNIT.

REVISIONS

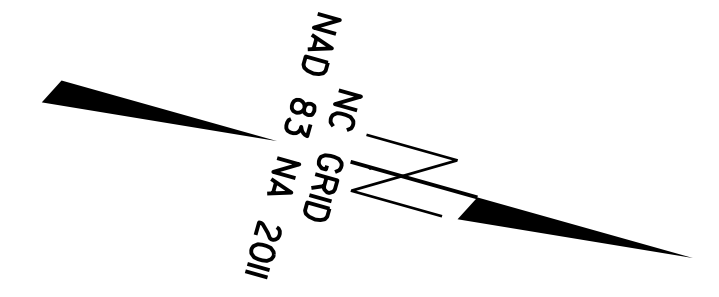
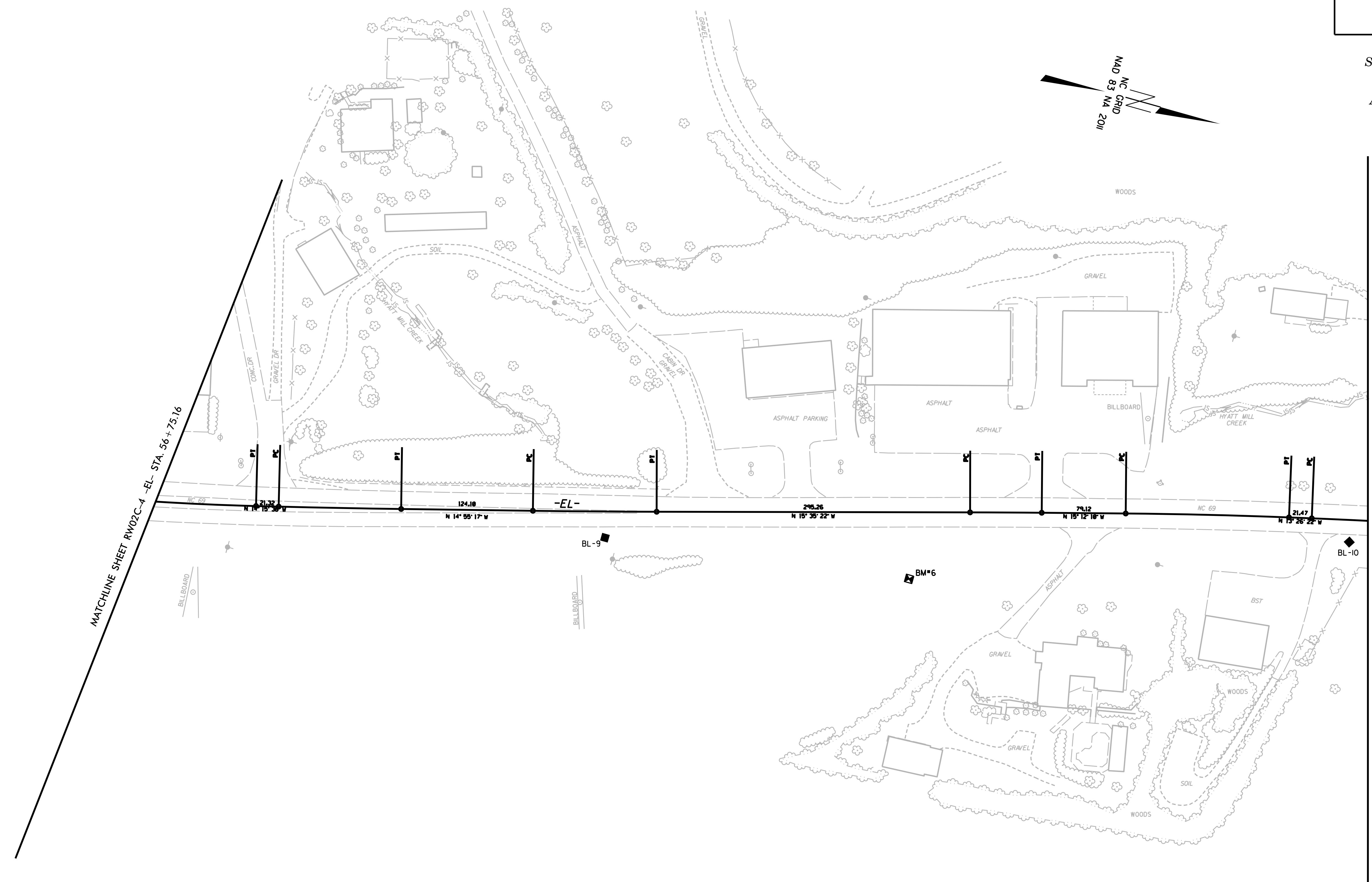
07-NOV-2018 14:00
C:\asurvey\19051\Projects\0011\c-srv\02c-4.dgn
C:\asurvey\19051\Projects\0011\c-srv\02c-4.dgn

PROJECT REFERENCE NO.	SHEET NO.
A-0011C	RW02C-5
Location and Surveys	
LOCATION AND SURVEYS, DIVISION 14 122 BONNIE LANE SYLVA, NC 28779	

SURVEY CONTROL SHEET

W/ EXISTING CENTERLINE ALIGNMENTS PRIOR TO CONSTRUCTION

*SEE SHEETS RW02C-21
THROUGH RW02C-23
FOR FURTHER
ALIGNMENT DETAILS*



REVISIONS

6/2/09

Q7-NOV-2018 14:02
C:\suj\work\proj\0011c\0011c\0011c-rw02c-5.dgn
C:\suj\work\proj\0011c\0011c\0011c-rw02c-5.dgn

NOTES:

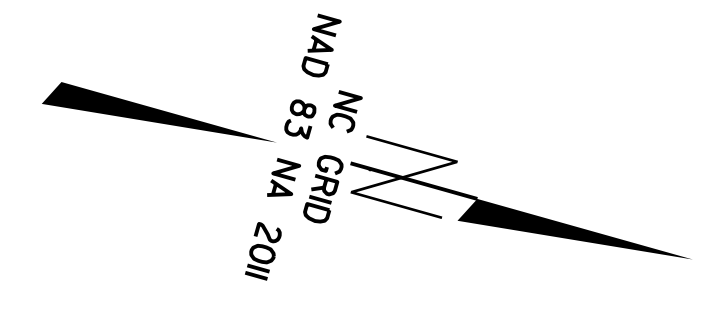
1. PROJECT CONTROL WAS ESTABLISHED USING GNSS, THE GLOBAL NAVIGATION SATELLITE SYSTEM.
2. THE SURVEY CONTROL DATA FOR THIS PROJECT HAS BEEN COMPILED FROM VARIOUS SOURCES. IF FURTHER INFORMATION REGARDING PROJECT CONTROL IS NEEDED, PLEASE CONTACT THE LOCATION AND SURVEYS UNIT.

PROJECT REFERENCE NO.	SHEET NO.
A-0011C	RW02C-6
Location and Surveys	
LOCATION AND SURVEYS, DIVISION 14 122 BONNIE LANE SYLVA, NC 28779	

SURVEY CONTROL SHEET

W/ EXISTING CENTERLINE ALIGNMENTS PRIOR TO CONSTRUCTION

*SEE SHEETS RW02C-21
THROUGH RW02C-23
FOR FURTHER
ALIGNMENT DETAILS*



NOTES:

1. PROJECT CONTROL WAS ESTABLISHED USING GNSS, THE GLOBAL NAVIGATION SATELLITE SYSTEM.
2. THE SURVEY CONTROL DATA FOR THIS PROJECT HAS BEEN COMPILED FROM VARIOUS SOURCES. IF FURTHER INFORMATION REGARDING PROJECT CONTROL IS NEEDED, PLEASE CONTACT THE LOCATION AND SURVEYS UNIT.

6/2/99

REVISIONS

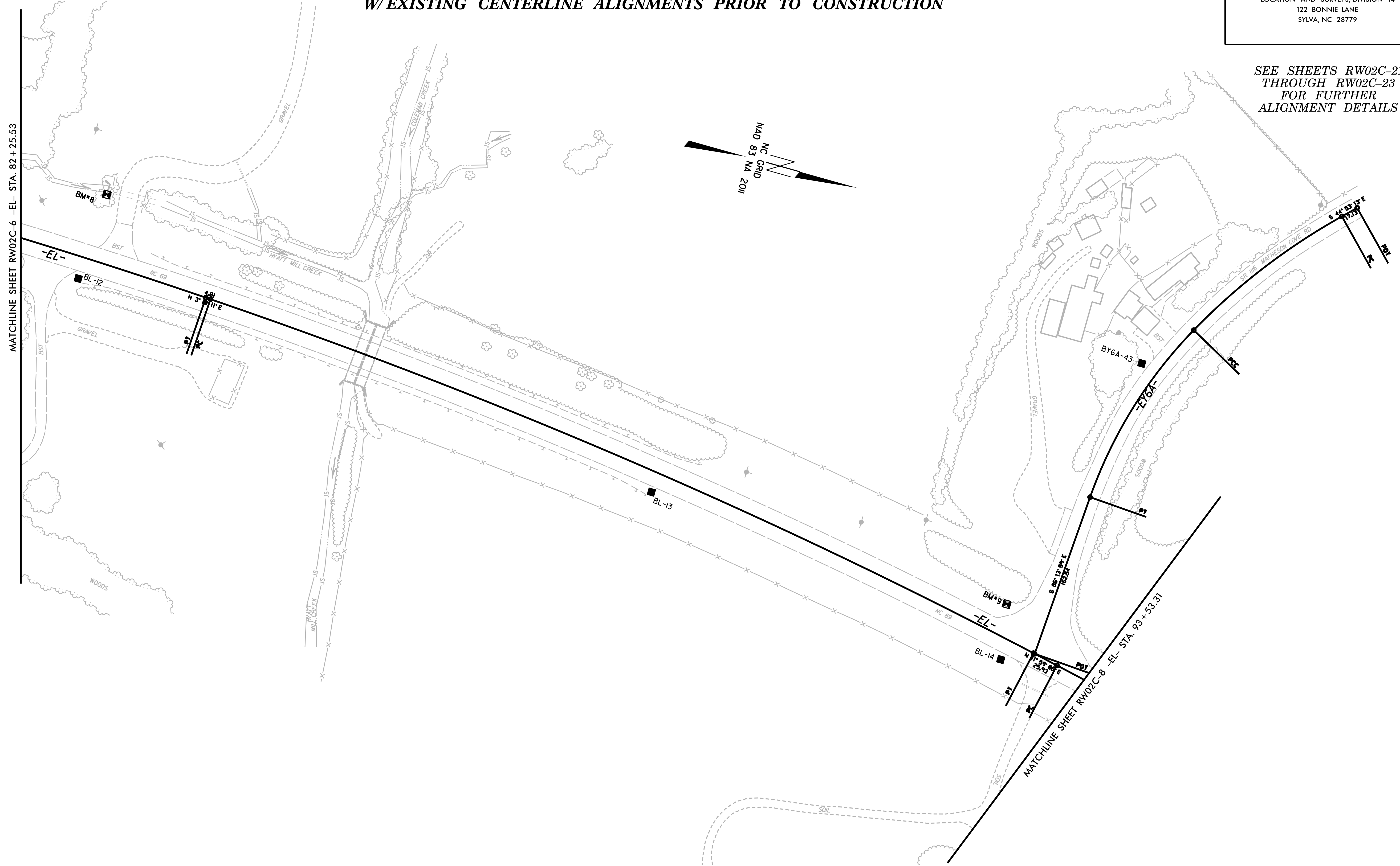
Q:\NOV-2018 14:01\0011c\RW_Sheets\Brien\0011c-1s-rw02c-6.dgn
C:\Users\j...
6/2/2019 10:03:11 AM

PROJECT REFERENCE NO.	SHEET NO.
A-0011C	RW02C-7
Location and Surveys	
LOCATION AND SURVEYS, DIVISION 14 122 BONNIE LANE SYLVA, NC 28779	

SURVEY CONTROL SHEET

W/ EXISTING CENTERLINE ALIGNMENTS PRIOR TO CONSTRUCTION

*SEE SHEETS RW02C-21
THROUGH RW02C-23
FOR FURTHER
ALIGNMENT DETAILS*



NOTES:

1. PROJECT CONTROL WAS ESTABLISHED USING GNSS, THE GLOBAL NAVIGATION SATELLITE SYSTEM.
2. THE SURVEY CONTROL DATA FOR THIS PROJECT HAS BEEN COMPILED FROM VARIOUS SOURCES. IF FURTHER INFORMATION REGARDING PROJECT CONTROL IS NEEDED, PLEASE CONTACT THE LOCATION AND SURVEYS UNIT.

REVISIONS

6/2/99

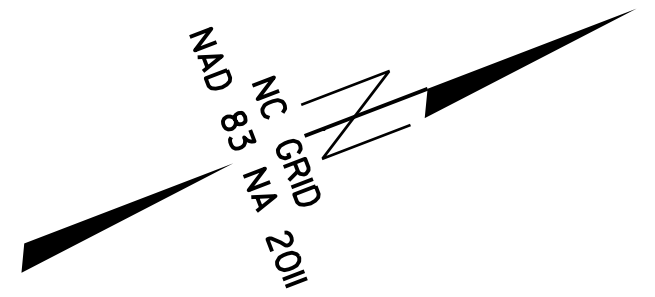
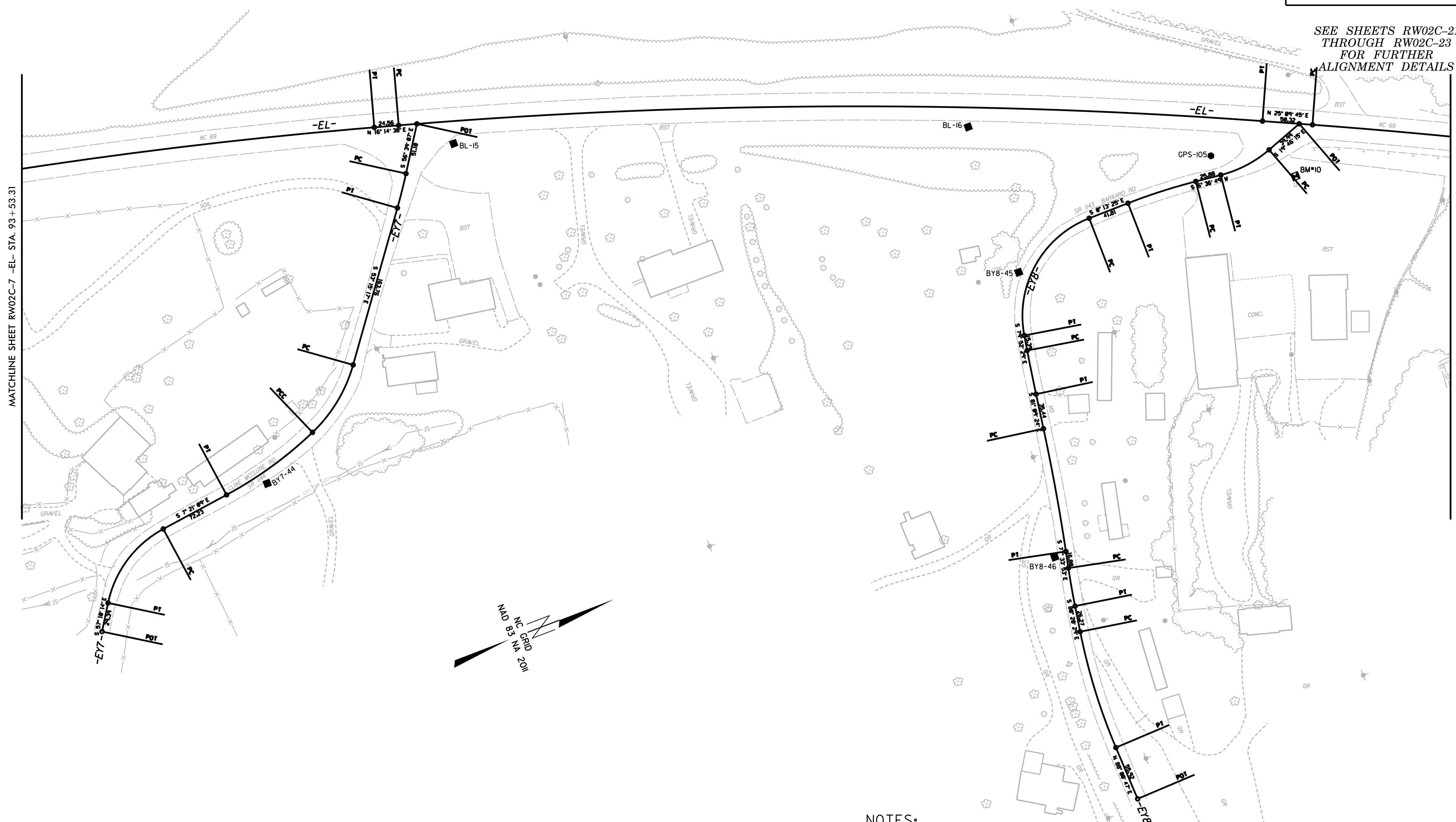
Q7-NOV-2018 14:07
C:\asdw\work\proj\0011c\0011c.dgn
C:\asdw\work\proj\0011c\0011c.dgn

PROJECT REFERENCE NO.	SHEET NO.
A-0011C	RW02C-8
Location and Surveys	
LOCATION AND SURVEYS, DIVISION 14 122 BONNIE LANE SYLVA, NC 28779	

SURVEY CONTROL SHEET

W/EXISTING CENTERLINE ALIGNMENTS PRIOR TO CONSTRUCTION

SEE SHEETS RW02C-21
THROUGH RW02C-23
FOR FURTHER
ALIGNMENT DETAILS



NOTES:

1. PROJECT CONTROL WAS ESTABLISHED USING GNSS, THE GLOBAL NAVIGATION SATELLITE SYSTEM.
2. THE SURVEY CONTROL DATA FOR THIS PROJECT HAS BEEN COMPILED FROM VARIOUS SOURCES. IF FURTHER INFORMATION REGARDING PROJECT CONTROL IS NEEDED, PLEASE CONTACT THE LOCATION AND SURVEYS UNIT.

REVISIONS

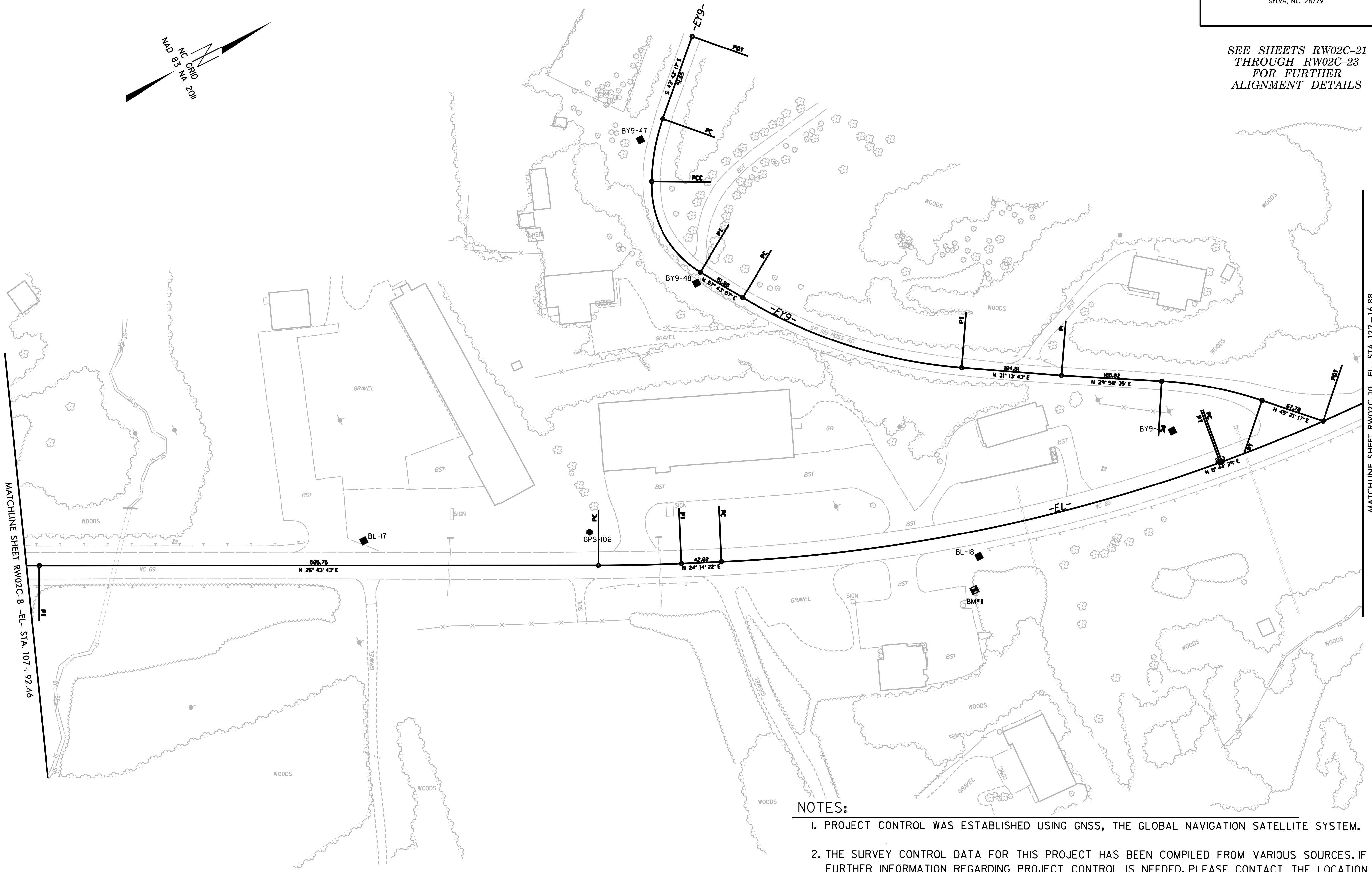
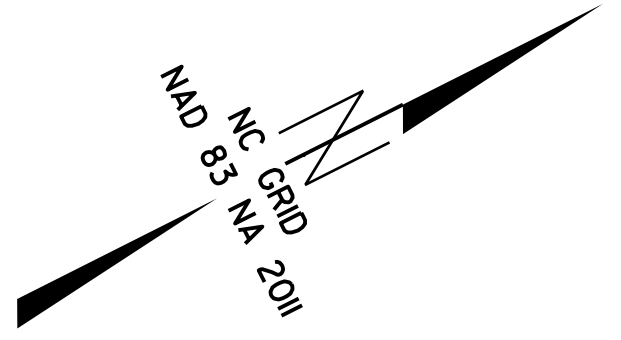
Q:\NOV-2018 14:06 0011C\RPV_Sheets_Brison\0011c_1s_rw02c-8.dgn
C:\Users\jwh\OneDrive\Documents\0011C.dwg
C:\Users\jwh\OneDrive\Documents\0011C.dwg

PROJECT REFERENCE NO.	SHEET NO.
A-0011C	RW02C-9
Location and Surveys	
LOCATION AND SURVEYS, DIVISION 14 122 BONNIE LANE SYLVA, NC 28779	

SURVEY CONTROL SHEET

W/ EXISTING CENTERLINE ALIGNMENTS PRIOR TO CONSTRUCTION

SEE SHEETS RW02C-21
THROUGH RW02C-23
FOR FURTHER
ALIGNMENT DETAILS



NOTES:

1. PROJECT CONTROL WAS ESTABLISHED USING GNSS, THE GLOBAL NAVIGATION SATELLITE SYSTEM.
2. THE SURVEY CONTROL DATA FOR THIS PROJECT HAS BEEN COMPILED FROM VARIOUS SOURCES. IF FURTHER INFORMATION REGARDING PROJECT CONTROL IS NEEDED, PLEASE CONTACT THE LOCATION AND SURVEYS UNIT.

REVISIONS

6/2/09

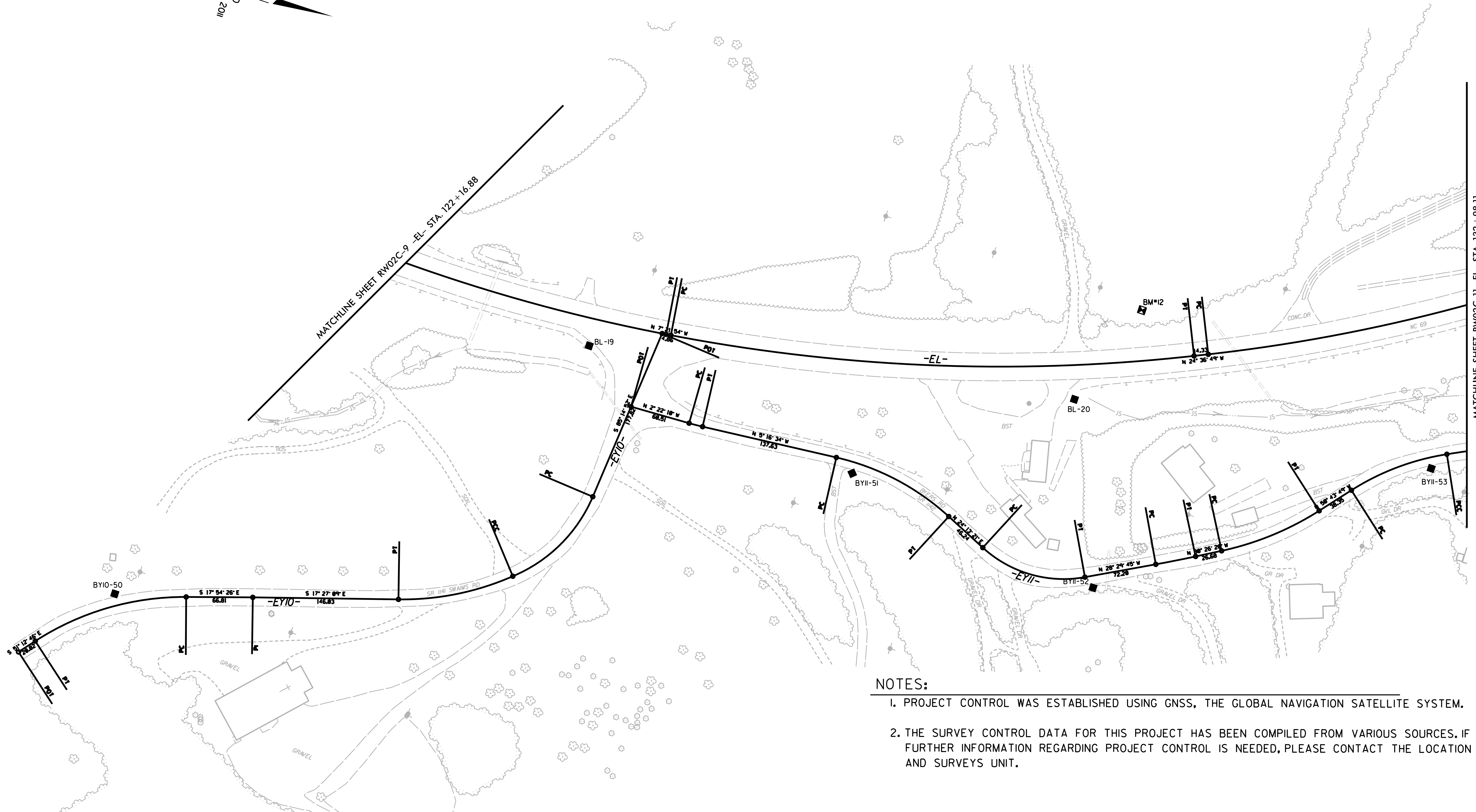
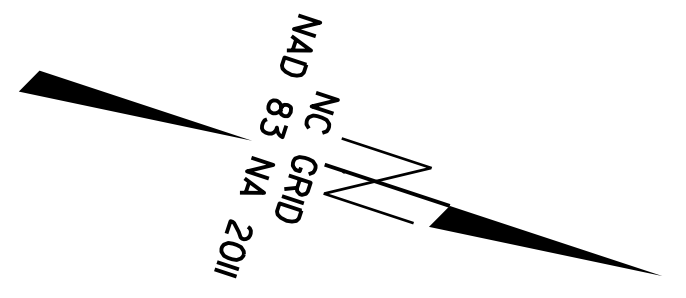
Q:\NOV-2018 14:05 0011C\SRV_Sheets\Brien\0011c_ls_rw02c-9.dgn
C:\Users\jg\OneDrive\Documents\0011C.dwg

PROJECT REFERENCE NO.	SHEET NO.
A-0011C	RW02C-10
Location and Surveys	
LOCATION AND SURVEYS, DIVISION 14 122 BONNIE LANE SYLVA, NC 28779	

SURVEY CONTROL SHEET

W/ EXISTING CENTERLINE ALIGNMENTS PRIOR TO CONSTRUCTION

SEE SHEETS RW02C-21
THROUGH RW02C-23
FOR FURTHER
ALIGNMENT DETAILS



NOTES:

1. PROJECT CONTROL WAS ESTABLISHED USING GNSS, THE GLOBAL NAVIGATION SATELLITE SYSTEM.
2. THE SURVEY CONTROL DATA FOR THIS PROJECT HAS BEEN COMPILED FROM VARIOUS SOURCES. IF FURTHER INFORMATION REGARDING PROJECT CONTROL IS NEEDED, PLEASE CONTACT THE LOCATION AND SURVEYS UNIT.

REVISIONS

6/2/09

Q:\NOV-2018 1413 CASWELL\A-0011C\RW_Sheets\Brien\A0011c_ls_rw02c-10.dgn

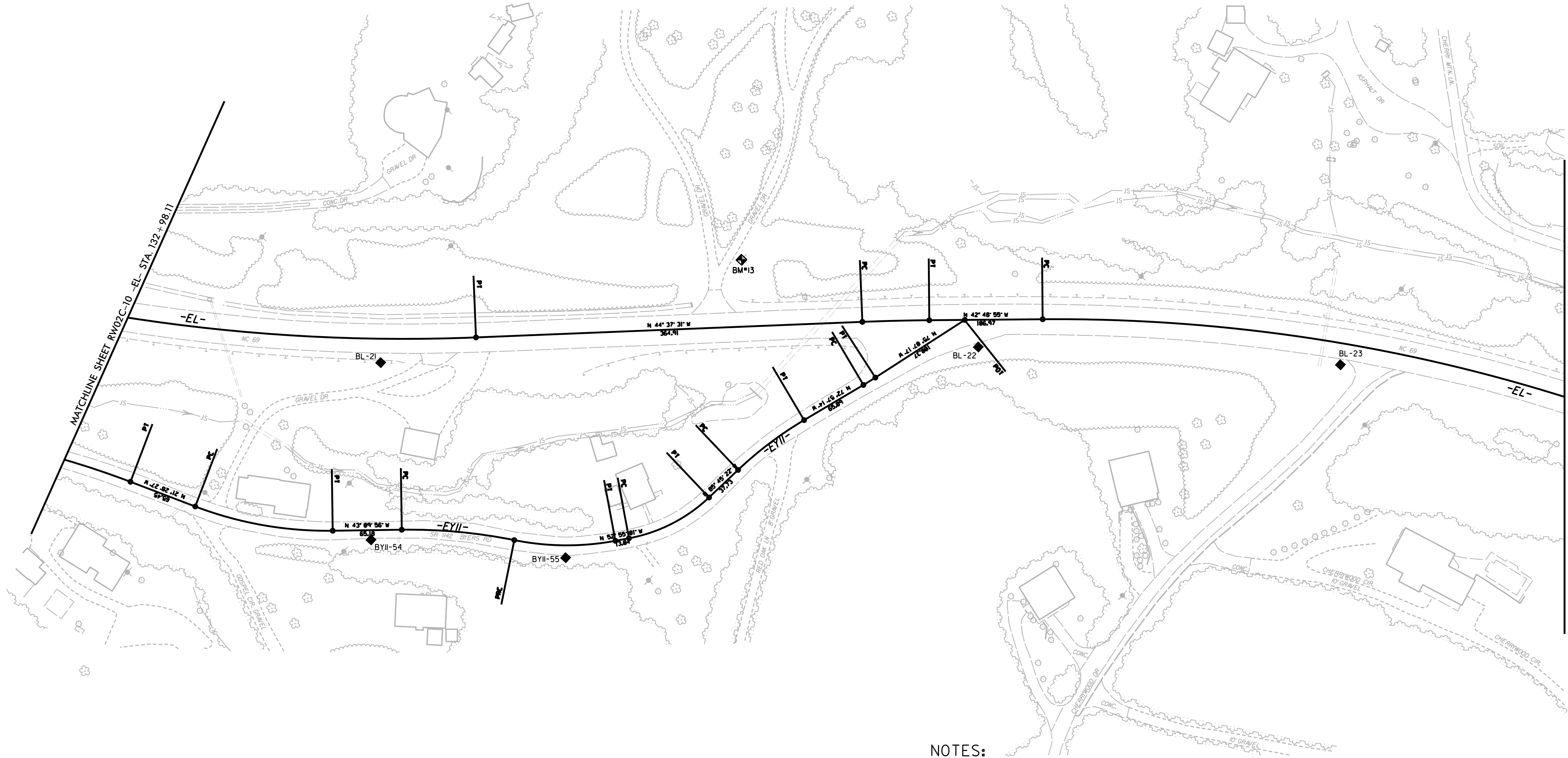
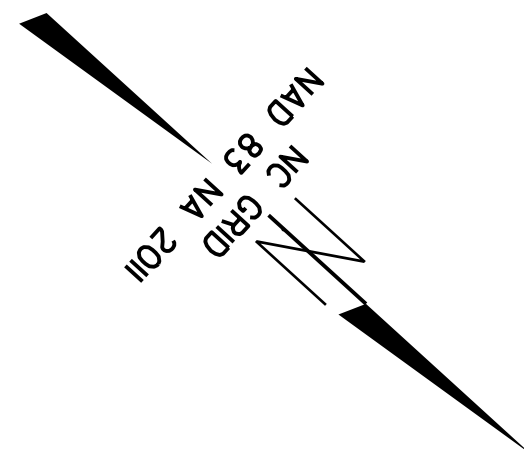
6/2/99

SURVEY CONTROL SHEET

W/ EXISTING CENTERLINE ALIGNMENTS PRIOR TO CONSTRUCTION

PROJECT REFERENCE NO.	SHEET NO.
A-0011C	RW02C-11
Location and Surveys	
LOCATION AND SURVEYS, DIVISION 14 122 BONNIE LANE SYLVA, NC 28779	

SEE SHEETS RW02C-21
THROUGH RW02C-23
FOR FURTHER
ALIGNMENT DETAILS



NOTES:

1. PROJECT CONTROL WAS ESTABLISHED USING GNSS, THE GLOBAL NAVIGATION SATELLITE SYSTEM.
2. THE SURVEY CONTROL DATA FOR THIS PROJECT HAS BEEN COMPILED FROM VARIOUS SOURCES. IF FURTHER INFORMATION REGARDING PROJECT CONTROL IS NEEDED, PLEASE CONTACT THE LOCATION AND SURVEYS UNIT.

REVISIONS

Q:\NOV-2018 14125...0011c\DW_Sheets\Brien\0011c\1s-rw02c-11.dgn
C:\Users\j...
6/2/2019 10:58:11 AM

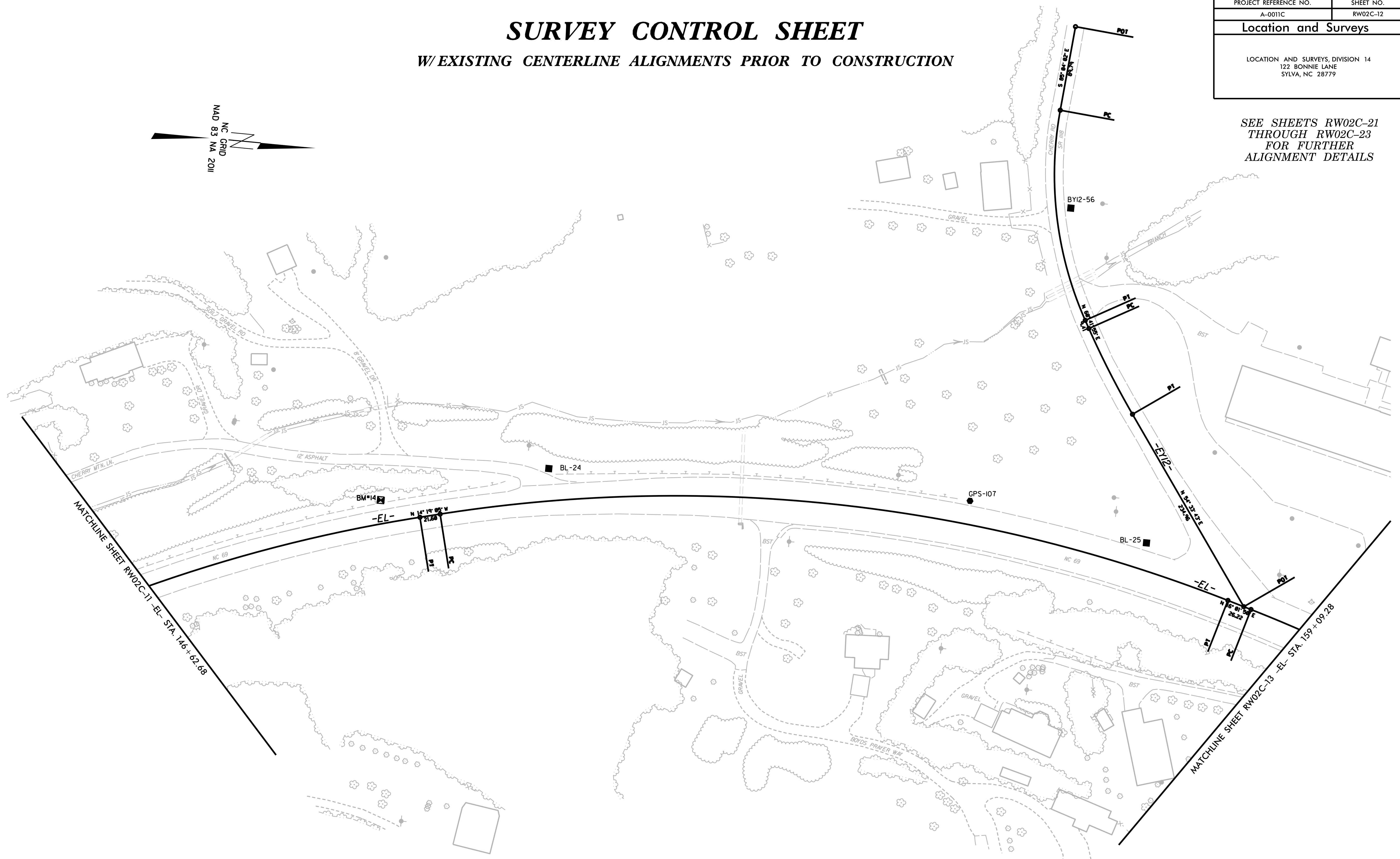
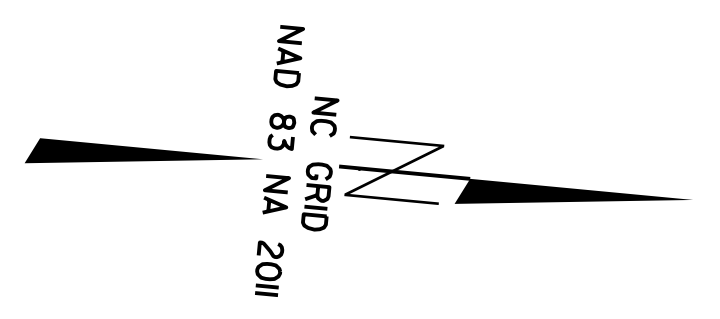
MATCHLINE SHEET RW02C-12 -EL- STA. 146 + 62.68

PROJECT REFERENCE NO.	SHEET NO.
A-0011C	RW02C-12
Location and Surveys	
LOCATION AND SURVEYS, DIVISION 14 122 BONNIE LANE SYLVA, NC 28779	

SURVEY CONTROL SHEET

W/ EXISTING CENTERLINE ALIGNMENTS PRIOR TO CONSTRUCTION

*SEE SHEETS RW02C-21
THROUGH RW02C-23
FOR FURTHER
ALIGNMENT DETAILS*



NOTES:

1. PROJECT CONTROL WAS ESTABLISHED USING GNSS, THE GLOBAL NAVIGATION SATELLITE SYSTEM.
2. THE SURVEY CONTROL DATA FOR THIS PROJECT HAS BEEN COMPILED FROM VARIOUS SOURCES. IF FURTHER INFORMATION REGARDING PROJECT CONTROL IS NEEDED, PLEASE CONTACT THE LOCATION AND SURVEYS UNIT.

6/2/09

REVISIONS

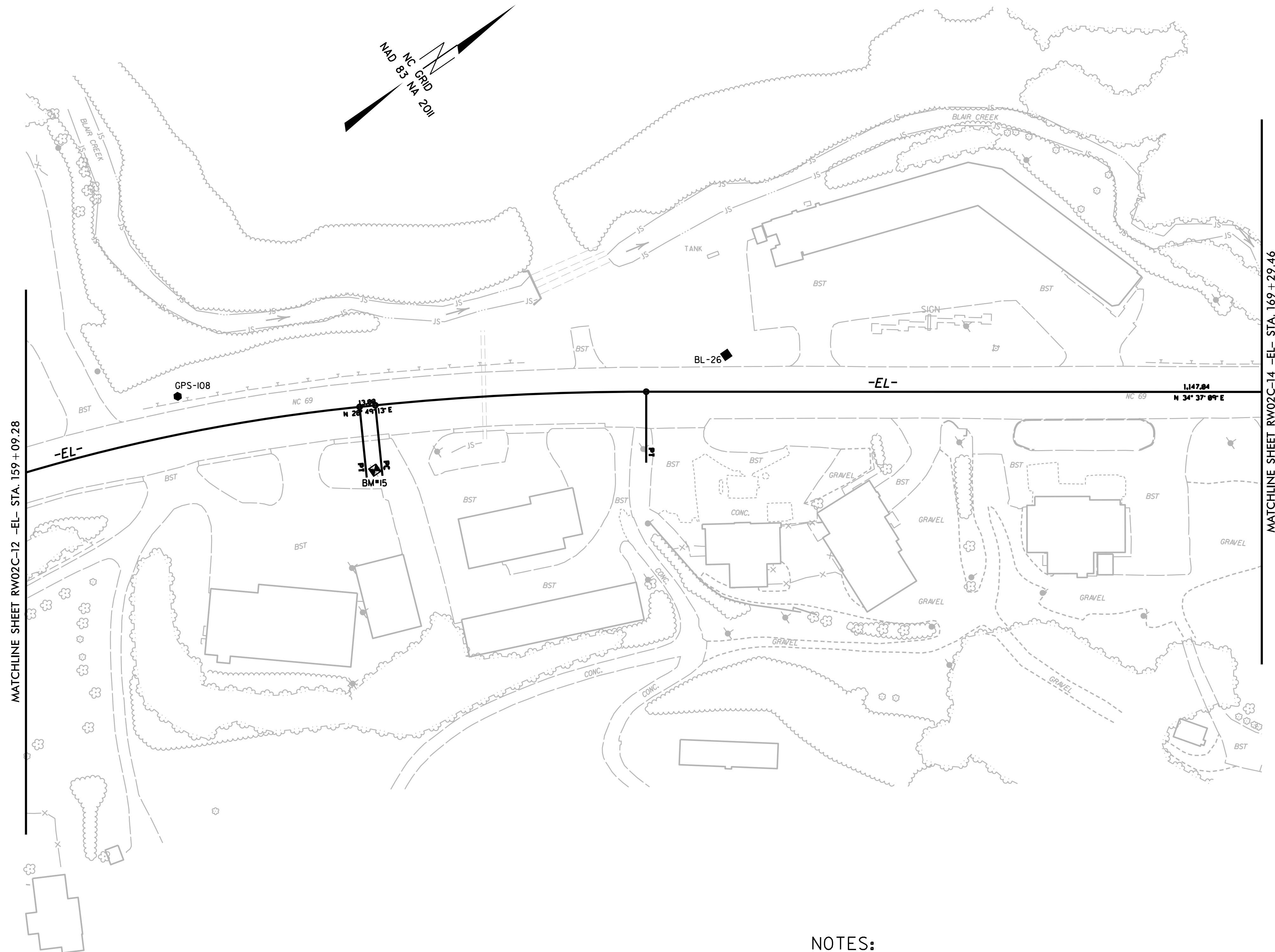
Q:\NOV-2018 1410_0011c\Bk_Sheets_Brien\0011c_1s_rw02c-12.dgn
C:\Users\jwh\OneDrive\Documents\0011c_1s_rw02c-12.dgn

PROJECT REFERENCE NO.	SHEET NO.
A-0011C	RW02C-13
Location and Surveys	
LOCATION AND SURVEYS, DIVISION 14 122 BONNIE LANE SYLVA, NC 28779	

SURVEY CONTROL SHEET

W/ EXISTING CENTERLINE ALIGNMENTS PRIOR TO CONSTRUCTION

SEE SHEETS RW02C-21
THROUGH RW02C-23
FOR FURTHER
ALIGNMENT DETAILS



NOTES:

1. PROJECT CONTROL WAS ESTABLISHED USING GNSS, THE GLOBAL NAVIGATION SATELLITE SYSTEM.
2. THE SURVEY CONTROL DATA FOR THIS PROJECT HAS BEEN COMPILED FROM VARIOUS SOURCES. IF FURTHER INFORMATION REGARDING PROJECT CONTROL IS NEEDED, PLEASE CONTACT THE LOCATION AND SURVEYS UNIT.

REVISIONS

6/2/09

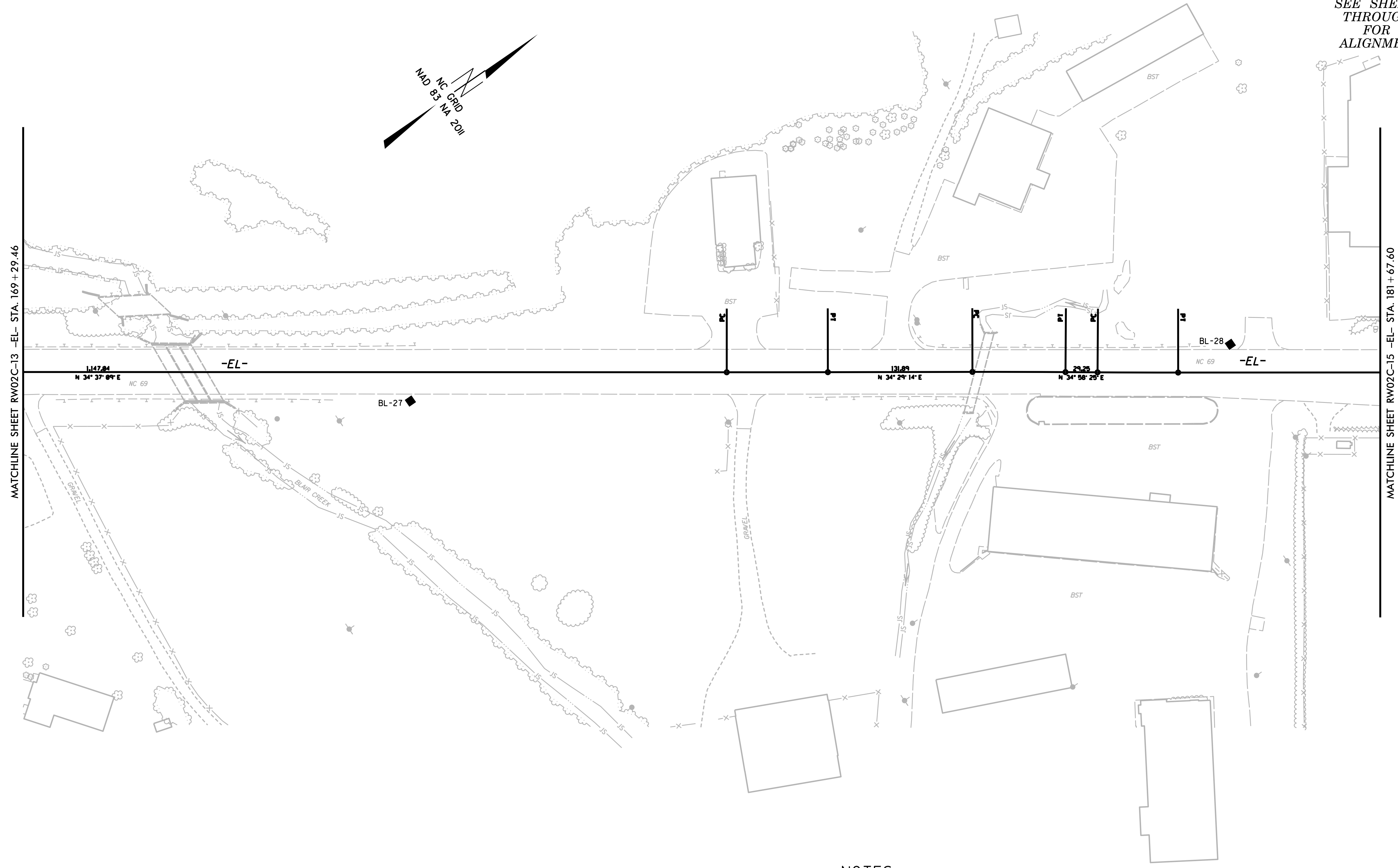
Q7-NOV-2018 14:24
C:\asj\work\proj\A-0011C\Drawings\0011c_13_rw02c-13.dgn

PROJECT REFERENCE NO.	SHEET NO.
A-0011C	RW02C-14
Location and Surveys	
LOCATION AND SURVEYS, DIVISION 14 122 BONNIE LANE SYLVA, NC 28779	

SURVEY CONTROL SHEET

W/ EXISTING CENTERLINE ALIGNMENTS PRIOR TO CONSTRUCTION

*SEE SHEETS RW02C-21
THROUGH RW02C-23
FOR FURTHER
ALIGNMENT DETAILS*



NOTES:

1. PROJECT CONTROL WAS ESTABLISHED USING GNSS, THE GLOBAL NAVIGATION SATELLITE SYSTEM.
2. THE SURVEY CONTROL DATA FOR THIS PROJECT HAS BEEN COMPILED FROM VARIOUS SOURCES. IF FURTHER INFORMATION REGARDING PROJECT CONTROL IS NEEDED, PLEASE CONTACT THE LOCATION AND SURVEYS UNIT.

REVISIONS

6/2/09

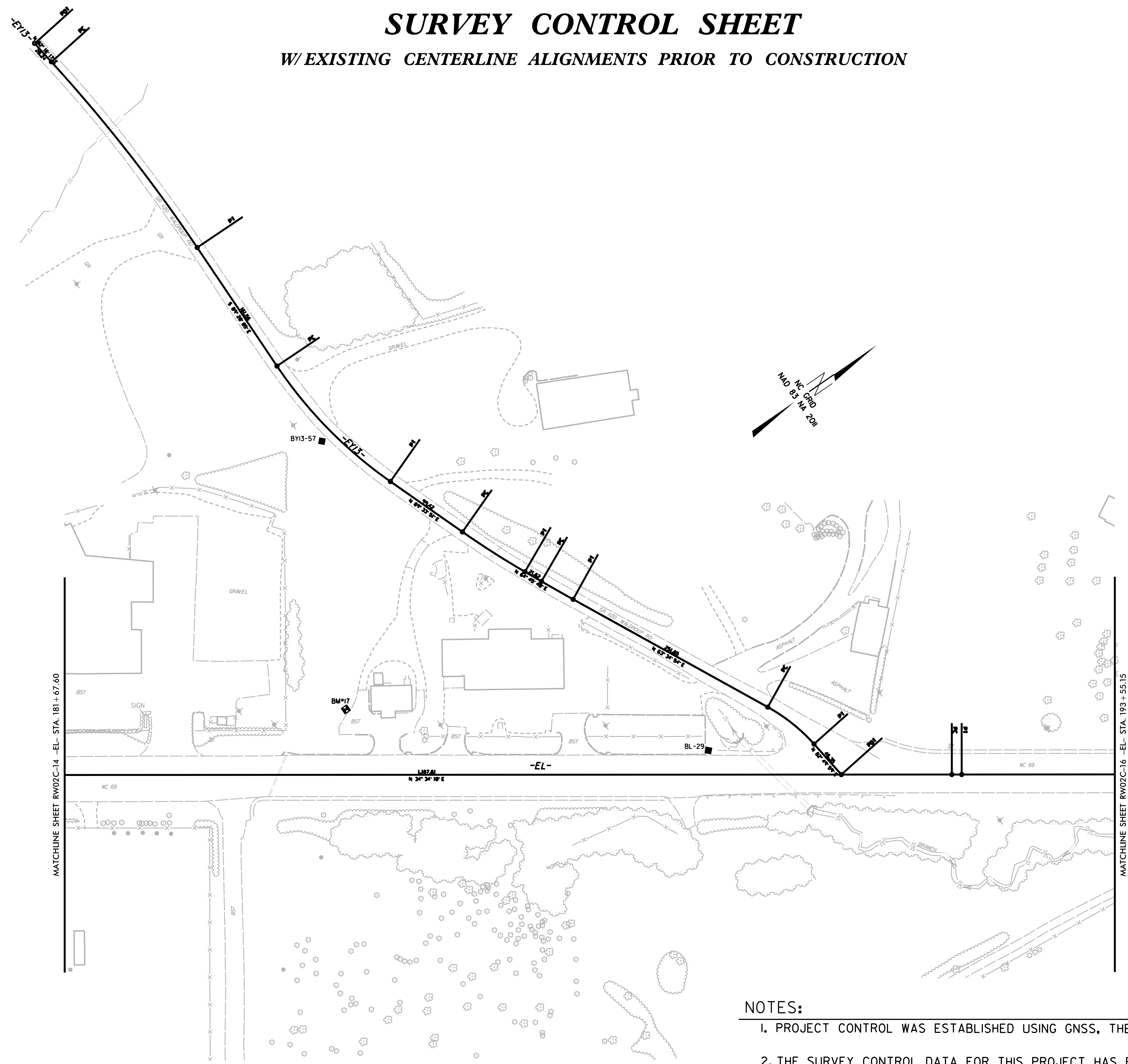
Q:\NOV-2018 1428
C:\Sullivan\0011C\0011C-Surveys\Brien\0011c-1s-rw02c-14.dgn
C:\Sullivan\0011C\0011C-Surveys\Brien\0011c-1s-rw02c-14.dgn

PROJECT REFERENCE NO.	SHEET NO.
A-0011C	RW02C-15
Location and Surveys	
LOCATION AND SURVEYS, DIVISION 14 122 BONNIE LANE SYLVA, NC 28779	

SEE SHEETS RW02C-21
THROUGH RW02C-23
FOR FURTHER
ALIGNMENT DETAILS

SURVEY CONTROL SHEET

W/ EXISTING CENTERLINE ALIGNMENTS PRIOR TO CONSTRUCTION



- NOTES:**
- PROJECT CONTROL WAS ESTABLISHED USING GNSS, THE GLOBAL NAVIGATION SATELLITE SYSTEM.
 - THE SURVEY CONTROL DATA FOR THIS PROJECT HAS BEEN COMPILED FROM VARIOUS SOURCES. IF FURTHER INFORMATION REGARDING PROJECT CONTROL IS NEEDED, PLEASE CONTACT THE LOCATION AND SURVEYS UNIT.

REVISIONS

6/2/09

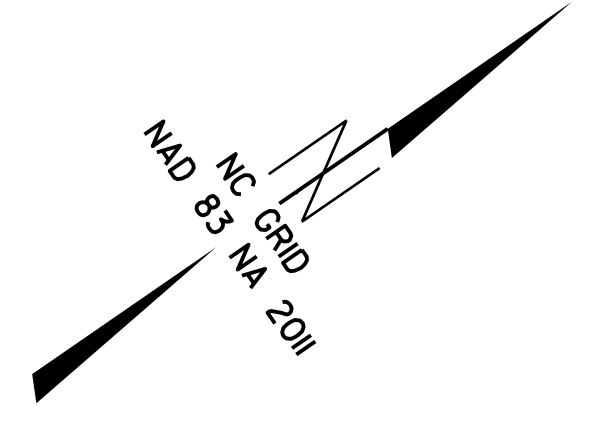
Q7-NQV-2018 16:40
 C:\sju\w\h\j06\0011c\0011c\0011c_1s-rw02c-15.dgn
 C:\sju\w\h\j06\0011c\0011c_1s-rw02c-15.dgn

PROJECT REFERENCE NO.	SHEET NO.
A-0011C	RW02C-16
Location and Surveys	
LOCATION AND SURVEYS, DIVISION 14 122 BONNIE LANE SYLVA, NC 28779	

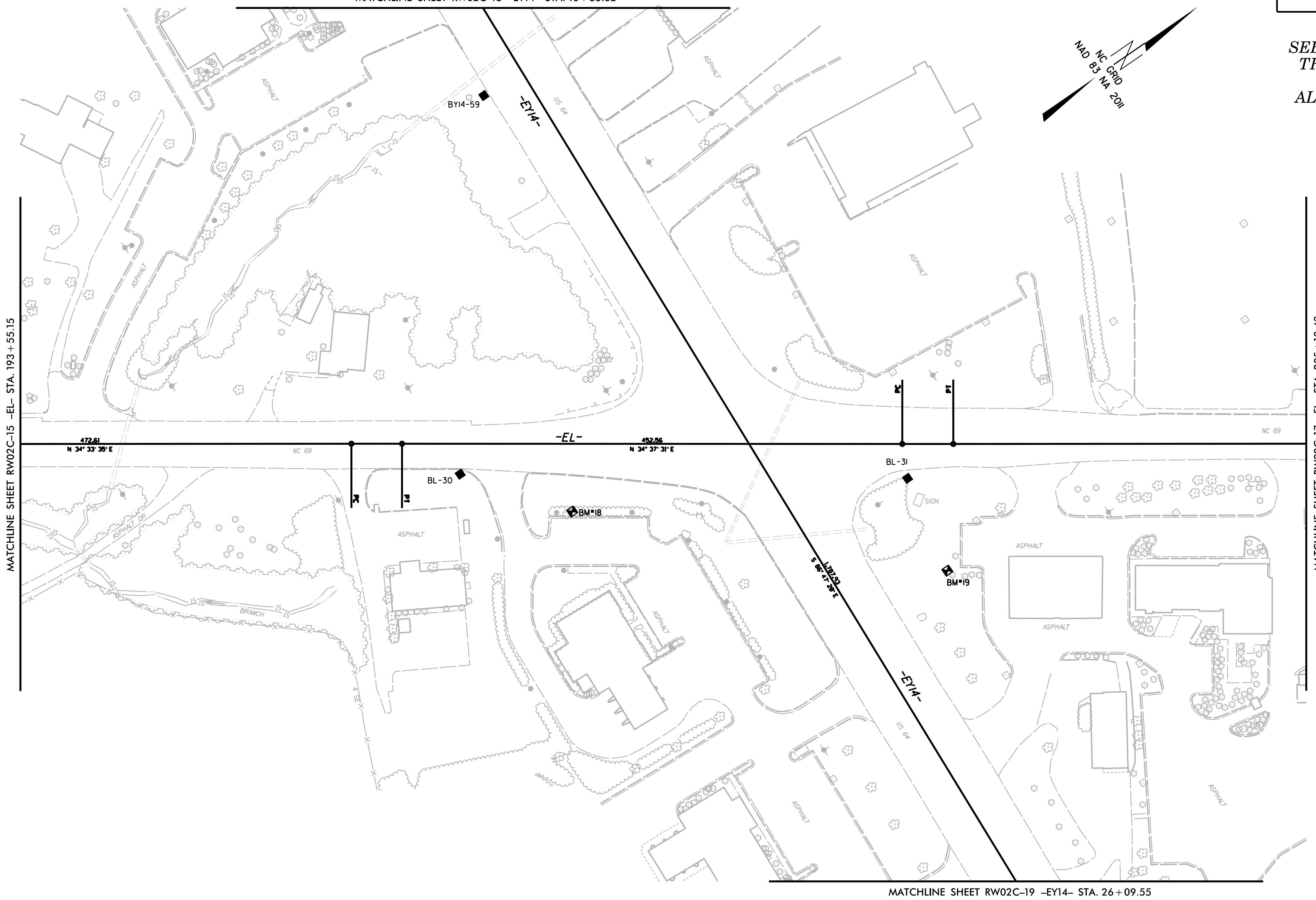
SURVEY CONTROL SHEET

W/ EXISTING CENTERLINE ALIGNMENTS PRIOR TO CONSTRUCTION

MATCHLINE SHEET RW02C-18 -EY14- STA. 16 + 83.62



**SEE SHEETS RW02C-21
THROUGH RW02C-23
FOR FURTHER
ALIGNMENT DETAILS**



MATCHLINE SHEET RW02C-19 -EY14- STA. 26 + 09.55

NOTES:

1. PROJECT CONTROL WAS ESTABLISHED USING GNSS, THE GLOBAL NAVIGATION SATELLITE SYSTEM.
2. THE SURVEY CONTROL DATA FOR THIS PROJECT HAS BEEN COMPILED FROM VARIOUS SOURCES. IF FURTHER INFORMATION REGARDING PROJECT CONTROL IS NEEDED, PLEASE CONTACT THE LOCATION AND SURVEYS UNIT.

REVISIONS

6/2/09

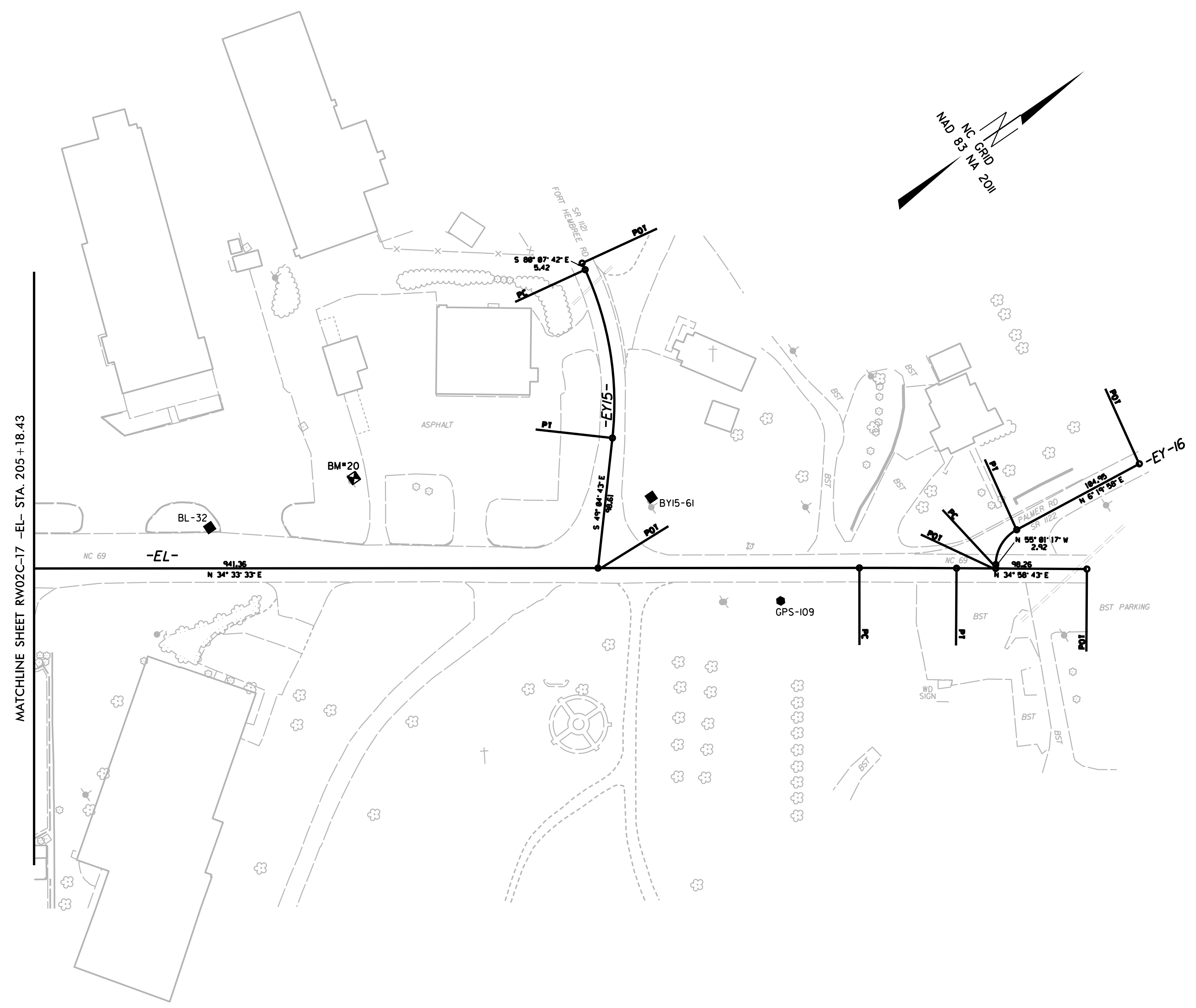
Q7-NOV-2018 14:33
 C:\sju\work\proj\0011c\0011c.dwg
 C:\sju\work\proj\0011c\0011c.dwg
 C:\sju\work\proj\0011c\0011c.dwg

SURVEY CONTROL SHEET

W/ EXISTING CENTERLINE ALIGNMENTS PRIOR TO CONSTRUCTION

PROJECT REFERENCE NO.	SHEET NO.
A-0011C	RW02C-17
Location and Surveys	
LOCATION AND SURVEYS, DIVISION 14 122 BONNIE LANE SYLVA, NC 28779	

SEE SHEETS RW02C-21
 THROUGH RW02C-23
 FOR FURTHER
 ALIGNMENT DETAILS



NOTES:

1. PROJECT CONTROL WAS ESTABLISHED USING GNSS, THE GLOBAL NAVIGATION SATELLITE SYSTEM.
2. THE SURVEY CONTROL DATA FOR THIS PROJECT HAS BEEN COMPILED FROM VARIOUS SOURCES. IF FURTHER INFORMATION REGARDING PROJECT CONTROL IS NEEDED, PLEASE CONTACT THE LOCATION AND SURVEYS UNIT.

REVISIONS

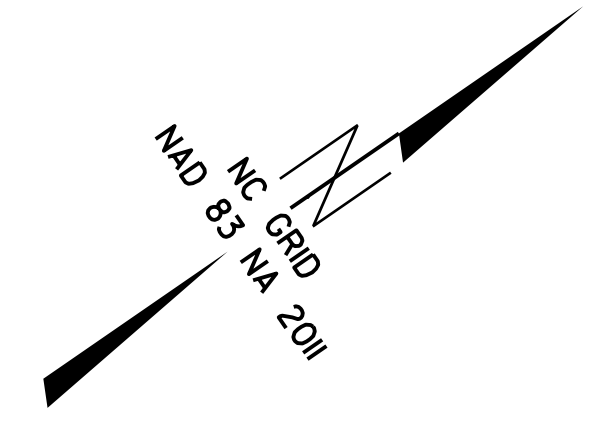
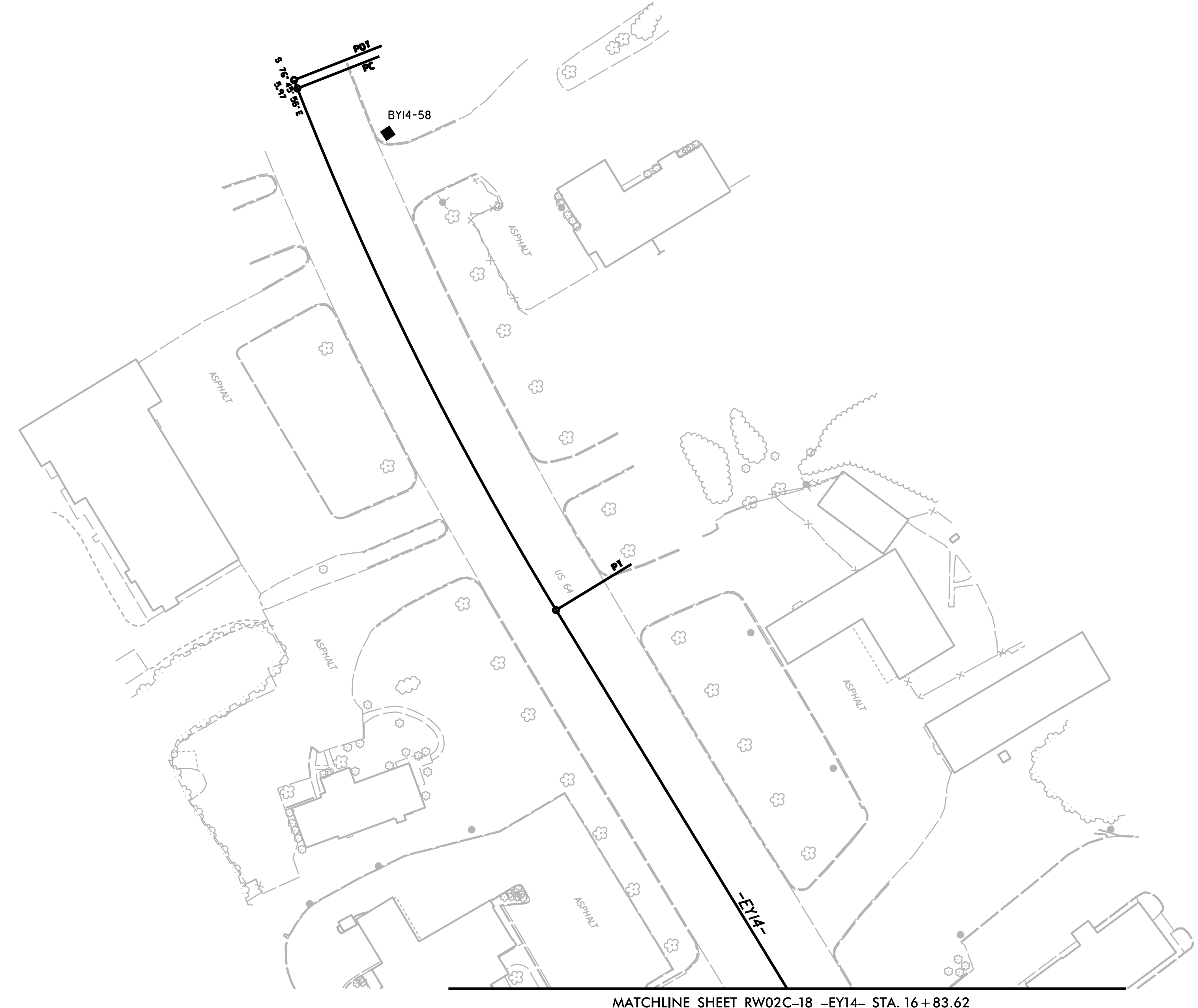
Q:\NOV-2008 14132
 C:\asdwat\p09\cadd\11011111\11011111.dgn
 6/2/09

PROJECT REFERENCE NO.	SHEET NO.
A-0011C	RW02C-18
Location and Surveys	
LOCATION AND SURVEYS, DIVISION 14 122 BONNIE LANE SYLVA, NC 28779	

SURVEY CONTROL SHEET

W/ EXISTING CENTERLINE ALIGNMENTS PRIOR TO CONSTRUCTION

**SEE SHEETS RW02C-21
THROUGH RW02C-23
FOR FURTHER
ALIGNMENT DETAILS**



REVISIONS

6/2/09

Q:\NOV-2018\1413\0011C\0011C_Survey_Sheets_Brisen\0011c_1s-rw02c-18.dgn
C:\Users\jwh\OneDrive\Documents\0011C.dgn

NOTES:

1. PROJECT CONTROL WAS ESTABLISHED USING GNSS, THE GLOBAL NAVIGATION SATELLITE SYSTEM.
2. THE SURVEY CONTROL DATA FOR THIS PROJECT HAS BEEN COMPILED FROM VARIOUS SOURCES. IF FURTHER INFORMATION REGARDING PROJECT CONTROL IS NEEDED, PLEASE CONTACT THE LOCATION AND SURVEYS UNIT.

6/2/19

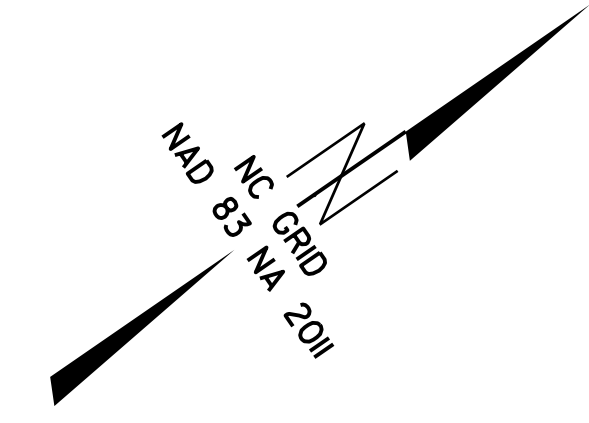
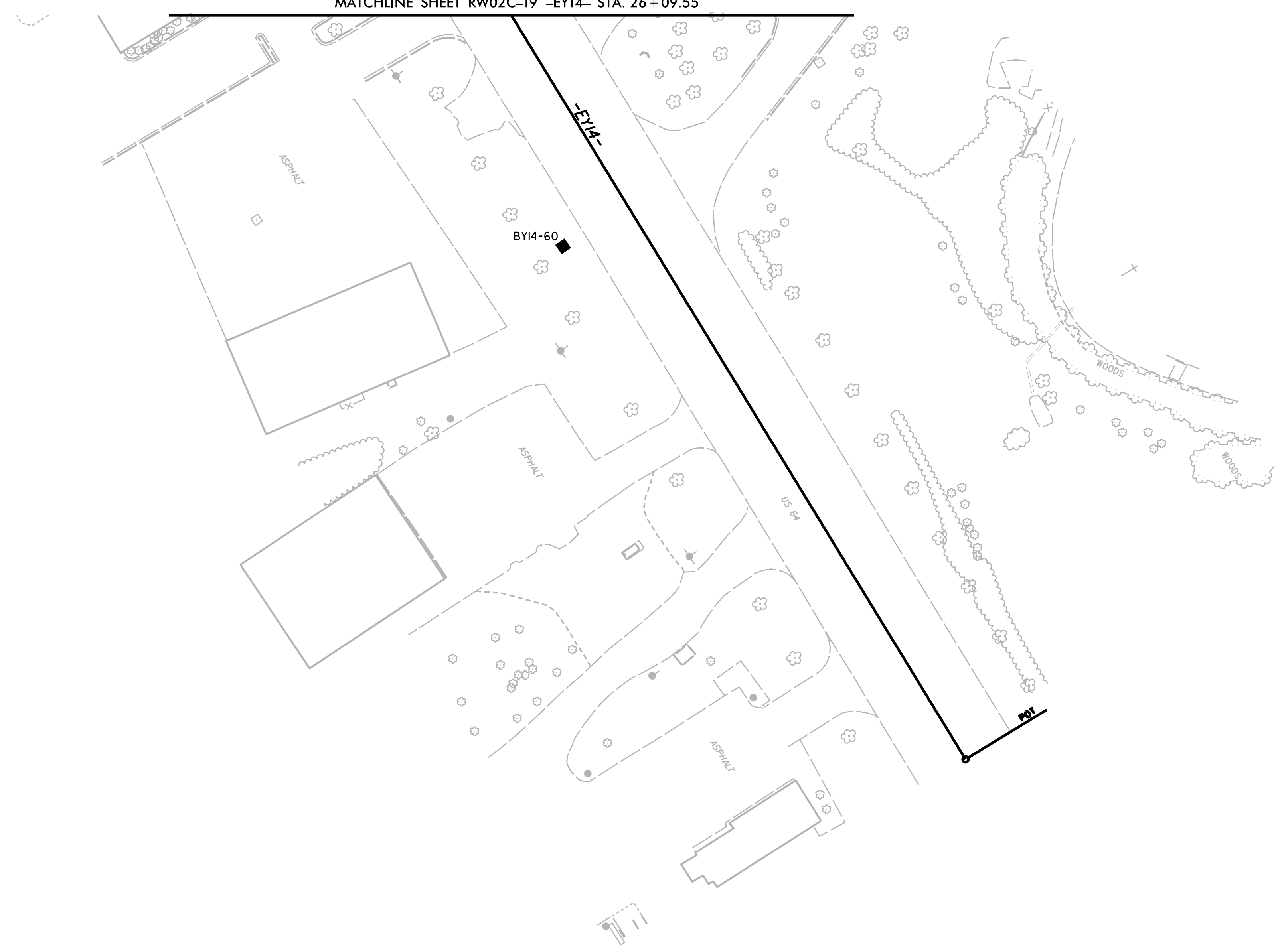
SURVEY CONTROL SHEET

W/EXISTING CENTERLINE ALIGNMENTS PRIOR TO CONSTRUCTION

PROJECT REFERENCE NO.	SHEET NO.
A-0011C	RW02C-19
Location and Surveys	
LOCATION AND SURVEYS, DIVISION 14 122 BONNIE LANE SYLVIA, NC 28779	

SEE SHEETS RW02C-21
THROUGH RW02C-23
FOR FURTHER
ALIGNMENT DETAILS

MATCHLINE SHEET RW02C-19 -EY14- STA. 26+09.55



REVISIONS

Q7-NOV-2018 14:34
C:\aspl\work\proj\0011c\0011c\0011c-rw02c-19.dgn

NOTES:

1. PROJECT CONTROL WAS ESTABLISHED USING GNSS, THE GLOBAL NAVIGATION SATELLITE SYSTEM.
2. THE SURVEY CONTROL DATA FOR THIS PROJECT HAS BEEN COMPILED FROM VARIOUS SOURCES. IF FURTHER INFORMATION REGARDING PROJECT CONTROL IS NEEDED, PLEASE CONTACT THE LOCATION AND SURVEYS UNIT.

SURVEY CONTROL SHEET

W/EXISTING CENTERLINE ALIGNMENTS PRIOR TO CONSTRUCTION

PROJECT REFERENCE NO.	SHEET NO.
A-0011C	RW02C-20
Location and Surveys	
LOCATION AND SURVEYS, DIVISION 14 122 BONNIE LANE SYLVA, NC 28779	

BL POINT	DESC.	NORTH	EAST	ELEVATION
1	BL-1	484938.5990	554913.7014	1990.35
2	BL-2	485417.3601	554982.5317	1994.64
3	BL-3	486030.7051	555193.9723	1997.36
4	BL-4	486834.6349	555416.3961	2008.31
5	BL-5	487554.5351	555620.3482	2019.40
6	BL-6	488126.1784	555786.2168	2027.40
7	BL-7	488605.4574	555885.8045	2028.11
G103	GPS-103	489145.8220	555923.6360	2017.77
8	BL-8	489221.3212	555921.4826	2015.58
9	BL-9	489972.1498	555747.6683	1990.51
10	BL-10	490648.2405	555561.8656	1972.50
11	BL-11	491364.8898	555441.7837	1956.38
12	BL-12	492121.9743	555419.0428	1938.86
13	BL-13	492718.0626	555468.5138	1940.39
14	BL-14	493091.2563	555533.7617	1958.89
15	BL-15	493589.0850	555662.4081	1980.06
16	BL-16	494077.5846	555831.8667	1994.50
G105	GPS-105	494294.9050	555946.2770	2000.22
17	BL-17	494853.5971	556150.4530	2001.88
18	BL-18	495421.7160	556454.8790	1998.24
19	BL-19	496053.5811	556513.6944	1999.38
20	BL-20	496532.3800	556412.3444	1994.63
21	BL-21	497081.3010	556069.9585	1969.46
22	BL-22	497488.3631	555679.3907	1937.96
23	BL-23	497752.2920	555461.6713	1920.08
24	BL-24	498338.1104	555178.4482	1888.31
G107	GPS-107	498784.5670	555170.5710	1871.57
25	BL-25	498974.3995	555197.2083	1864.35
26	BL-26	499671.8223	555520.1167	1833.00
27	BL-27	500292.0608	556017.0720	1827.37
28	BL-28	500937.2235	556399.2287	1835.61
29	BL-29	501650.2522	556888.5457	1850.63
30	BL-30	502325.1039	557420.2390	1876.28
31	BL-31	502656.0805	557653.1600	1887.41
32	BL-32	503097.2237	557882.0309	1907.14
G109	GPS-109	503420.1440	558171.8450	1908.76

BY1 POINT	DESC.	NORTH	EAST	ELEVATION
Y1	BL-1	484938.5990	554913.7014	1990.35
33	BY1-33	485008.9785	555062.9756	1977.78

BY2 POINT	DESC.	NORTH	EAST	ELEVATION
34	BY2-34	486380.2212	554806.2549	2003.23
Y3	BL-3	486030.7051	555193.9723	1997.36
35	BY2-35	486247.9995	555522.0636	2014.27

BY2A POINT	DESC.	NORTH	EAST	ELEVATION
36	BY2A-36	487443.9281	555925.3548	1981.88
37	BY2A-37	487958.3595	555913.0503	2002.41
YA38	BY3-38	488418.6603	555966.1157	2034.71

BY3 POINT	DESC.	NORTH	EAST	ELEVATION
Y7	BL-7	488605.4574	555885.8045	2028.11
38	BY3-38	488418.6603	555966.1157	2034.71

BY4 POINT	DESC.	NORTH	EAST	ELEVATION
Y38	BY3-38	488418.6603	555966.1157	2034.71
39	BY4-39	488386.6917	556248.9466	2059.89

BY5 POINT	DESC.	NORTH	EAST	ELEVATION
Y8	BL-8	489221.3212	555921.4826	2015.58
40	BY5-40	489359.3831	556356.4320	2003.33

BY6 POINT	DESC.	NORTH	EAST	ELEVATION
41	BY6-41	490855.4048	555020.6563	1988.66
42	BY6-42	490853.7039	555243.3419	1969.30
Y10	BL-10	490648.2405	555561.8656	1972.50

BY6A POINT	DESC.	NORTH	EAST	ELEVATION
43	BY6A-43	493145.5923	555217.5332	1969.30
Y14	BL-14	493091.2563	555533.7617	2034.71

BY7 POINT	DESC.	NORTH	EAST	ELEVATION
Y15	BL-15	493589.0850	555662.4081	1980.06
44	BY7-44	493292.0554	555913.9889	1945.62

BY8 POINT	DESC.	NORTH	EAST	ELEVATION
Y105	GPS-105	494294.9050	555946.2770	2000.22
45	BY8-45	494072.7018	555986.2999	2013.63
46	BY8-46	494004.1048	556266.2815	2020.53

BY9 POINT	DESC.	NORTH	EAST	ELEVATION
47	BY9-47	495301.6001	555905.5169	2052.86
48	BY9-48	495286.3827	556066.0455	2050.82
49	BY9-49	495661.8960	556428.6574	2001.09
Y19	BL-19	496053.5811	556513.6944	1999.38

BY10 POINT	DESC.	NORTH	EAST	ELEVATION
YA19	BL-19	496053.5811	556513.6944	1999.38
50	BY10-50	495679.8496	556898.9167	1995.63

BY11 POINT	DESC.	NORTH	EAST	ELEVATION
YB19	BL-19	496053.5811	556513.6944	1999.38
51	BY11-51	496344.1087	556552.5587	2018.85
52	BY11-52	496609.2320	556585.9730	2005.54
53	BY11-53	496893.7553	556366.1670	1976.45
54	BY11-54	497187.1006	556199.7380	1956.47
55	BY11-55	497334.2569	556088.5181	1950.84

BY12 POINT	DESC.	NORTH	EAST	ELEVATION
56	BY12-56	498861.4720	554852.4291	1849.19
Y25	BL-25	498974.3995	555197.2083	1864.35

BY13 POINT	DESC.	NORTH	EAST	ELEVATION
57	BY13-57	501489.1172	556352.3782	1855.04
Y29	BL-29	501650.2522	556888.5457	1864.35

BY14 POINT	DESC.	NORTH	EAST	ELEVATION
58	BY14-58	502685.4292	556470.1280	1905.29
59	BY14-59	502537.2847	557150.3444	1890.34
Y31	BL-31	502656.0805	557653.1600	1887.41
60	BY14-60	502471.8838	558152.5529	1878.33

BY15 POINT	DESC.	NORTH	EAST	ELEVATION
61	BY15-61	503384.1984	558052.1403	1916.94
Y109	GPS-109	503420.1440	558171.8450	1908.76

.....
 BM1 ELEVATION = 1988.59
 N 484730 E 554968
 PAINTED BOLT ON BASE OF SUNOCO SIGN

 BM2 ELEVATION = 2007.73
 N 486158 E 555132
 NAIL IN BASE OF 6" CHERRY

 BM3 ELEVATION = 1996.52
 N 487107 E 555420
 CHISELED 'X' ON CONC HW

 BM4 ELEVATION = 2029.10
 N 488170 E 555860
 CHISELED SQUARE ON CONC HW

.....
 BM5 ELEVATION = 2021.38
 N 489160 E 555771
 CHISELED SQUARE ON CONC HW

 BM6 ELEVATION = 1985.25
 N 490259 E 555707
 NAIL IN BASE OF BILLBOARD POST

 BM7 ELEVATION = 1959.43
 N 491218 E 555482
 CHISELED 'X' ON CONC HW

 BM8 ELEVATION = 1935.65
 N 492127 E 555332
 CHISELED 'X' ON CONC HW

.....
 BM9 ELEVATION = 1960.73
 N 493082 E 555480
 PAINTED BOLT ON FH

 BM10 ELEVATION = 2000.44
 N 494367 E 555996
 PAINTED BOLT ON BASE OF SIGN

 BM11 ELEVATION = 2000.18
 N 495402 E 556484
 R/R SPIKE IN BASE OF PP

 BM12 ELEVATION = 1991.01
 N 496569 E 556306
 SPIKE IN BASE OF 22' POPLAR

.....
 BM13 ELEVATION = 1955.08
 N 497268 E 555769
 SPIKE IN BASE OF PP

 BM14 ELEVATION = 1900.17
 N 498164 E 555228
 PAINTED BOLT ON FH

 BM15 ELEVATION = 1848.12
 N 499381 E 555434
 SPIKE IN BASE OF PP

 BM16 ELEVATION = 1828.86
 N 500514 E 556088
 NAIL IN BASE OF SIGN POST

.....
 BM17 ELEVATION = 1844.44
 N 501339 E 556618
 PAINTED BOLT ON BASE OF SIGN

 BM18 ELEVATION = 1880.26
 N 502389 E 557506
 SPIKE IN BASE OF 30" OAK

.....
 BM19 ELEVATION = 1891.52
 N 502638 E 557742
 PAINTED BOLT ON BASE OF SIGN

 BM20 ELEVATION = 1912.28
 N 503208 E 557913
 SPIKE IN BASE OF PP

NOTES:

1. PROJECT CONTROL WAS ESTABLISHED USING GNSS, THE GLOBAL NAVIGATION SATELLITE SYSTEM.
2. THE SURVEY CONTROL DATA FOR THIS PROJECT HAS BEEN COMPILED FROM VARIOUS SOURCES. IF FURTHER INFORMATION REGARDING PROJECT CONTROL IS NEEDED, PLEASE CONTACT THE LOCATION AND SURVEYS UNIT.

6/2/09
 07-NOV-2008 14:36
 C:\sd\wa\h\p03\0011c\02c-20.dgn
 6/2/09
 REVISIONS
 6/2/09

