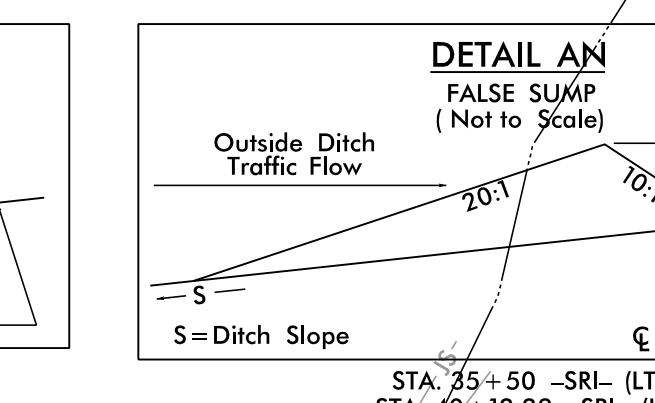
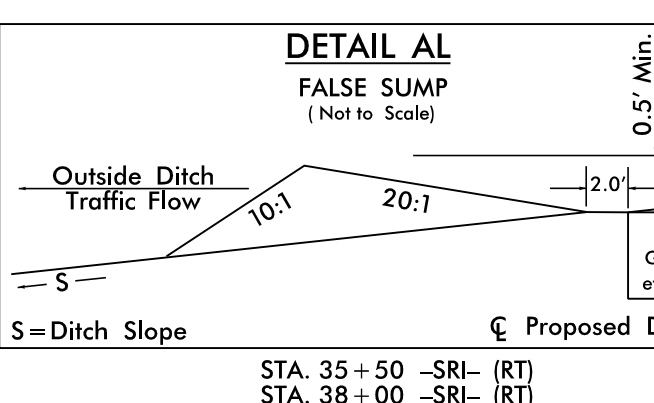
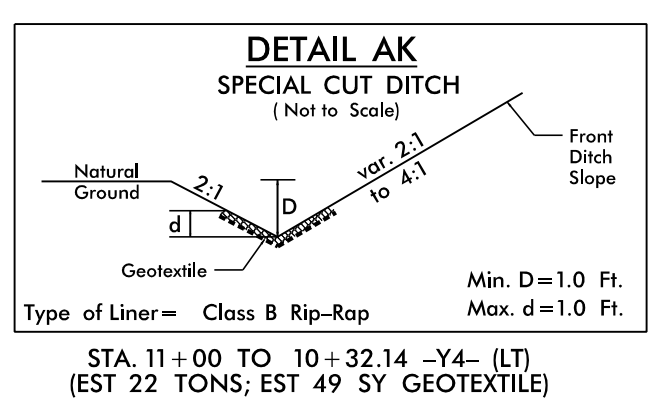
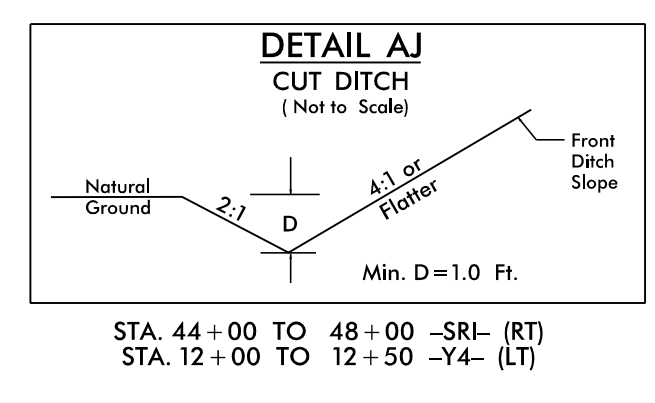
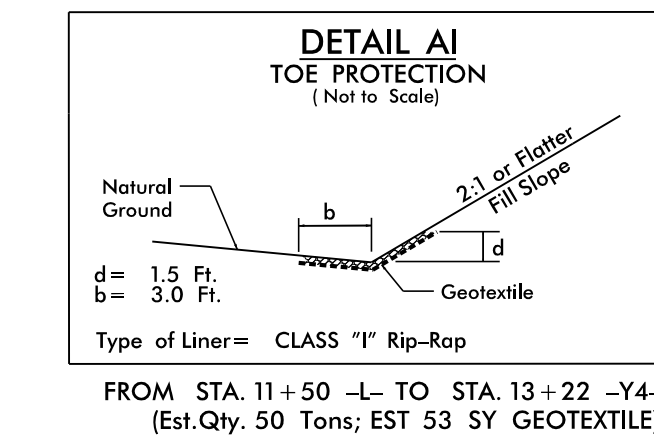
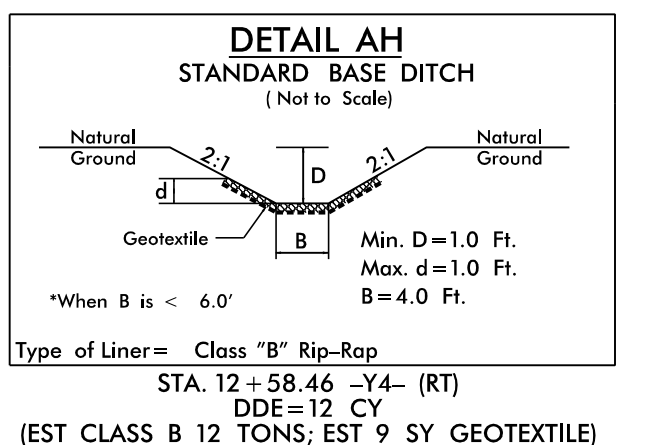
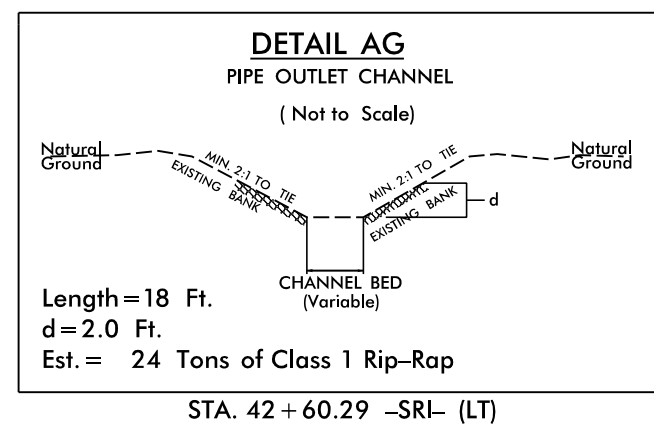
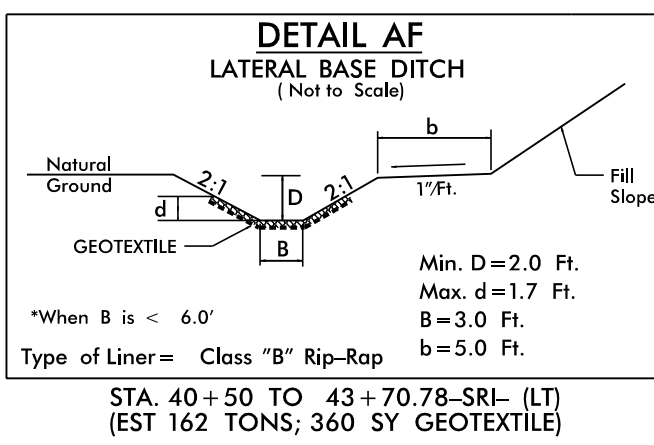
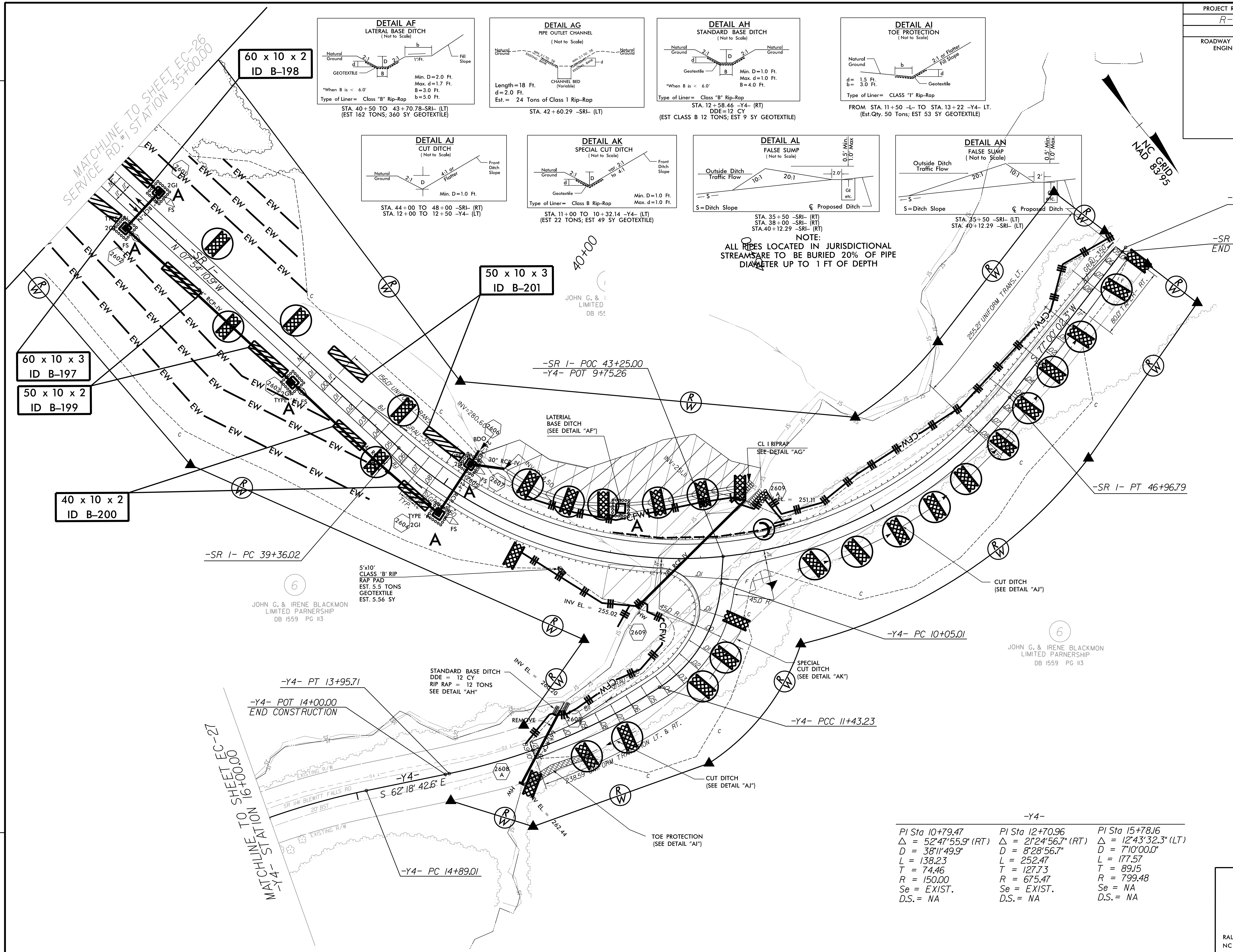


PROJECT REFERENCE NO. <i>R-3421B</i>	SHEET NO. <i>EC-41/CONST.21</i>
RW SHEET NO.	
ROADWAY DESIGN ENGINEER	HYDRAULICS ENGINEER



NOTE:
ALL PIPES LOCATED IN JURISDICTIONAL STREAMS ARE TO BE BURIED 20% OF PIPE DIAMETER UP TO 1 FT OF DEPTH



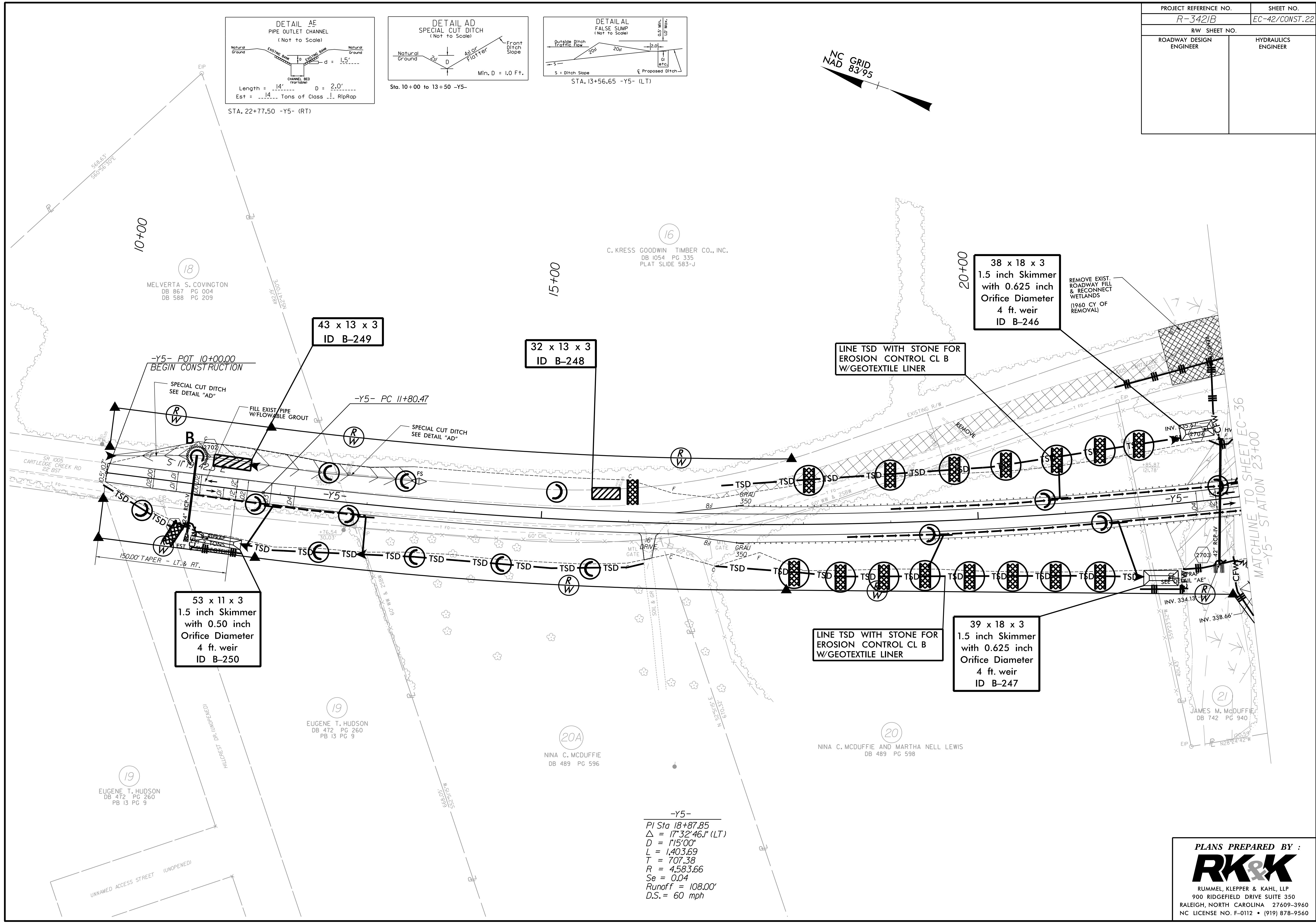
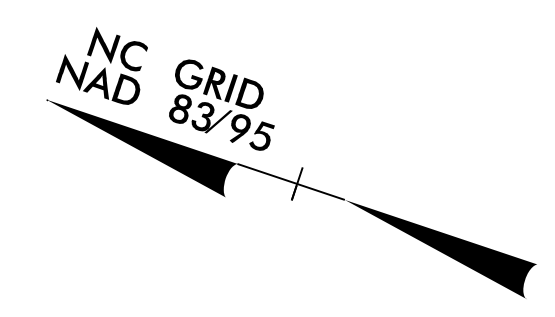
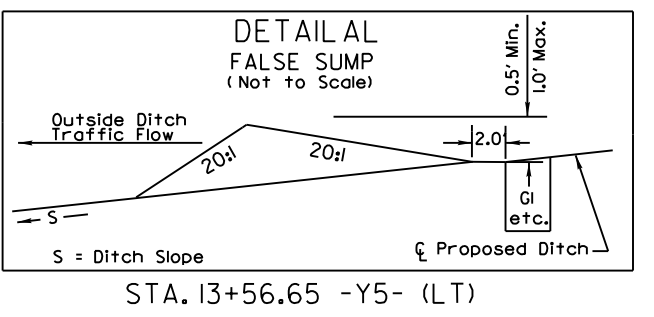
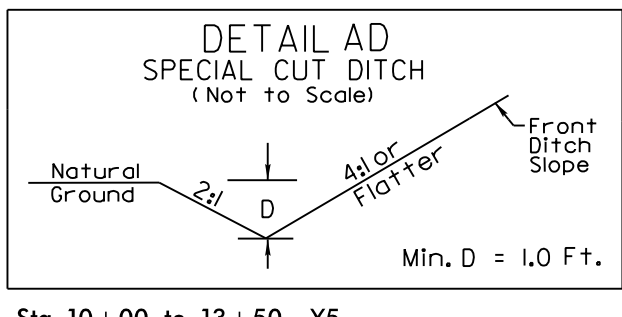
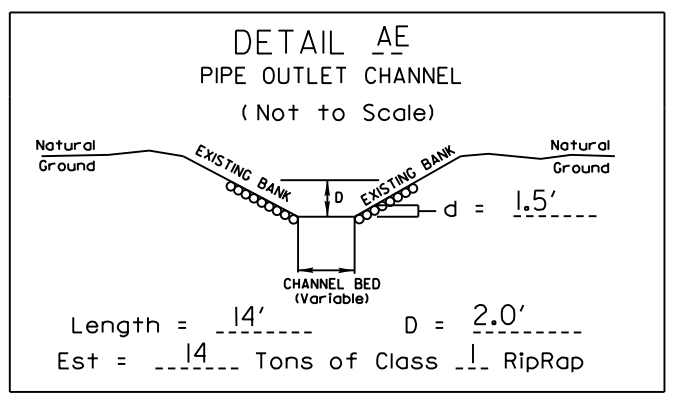
PI Sta	PI Sta	PI Sta
10+79.47	12+70.96	15+78.16
$\Delta = 52^{\circ}47'55.9"$ (RT)	$\Delta = 21^{\circ}24'56.7"$ (RT)	$\Delta = 12^{\circ}43'32.3"$ (LT)
D = 38'11"49.9"	D = 8'28"56.7"	D = 7'10"00.0"
L = 138.23	L = 252.47	L = 177.57
T = 74.46	T = 127.73	T = 89.15
R = 150.00	R = 675.47	R = 799.48
Se = EXIST.	Se = EXIST.	Se = NA
D.S. = NA	D.S. = NA	D.S. = NA

PLANS PREPARED BY :
RK&K
RUMMEL, KLEPPER & KAHL, LLP
900 RIDGEFIELD DRIVE SUITE 350
RALEIGH, NORTH CAROLINA 27609-3960
NC LICENSE NO. F-0112 • (919) 878-9560

RIGHT OF WAY REVISION: SEPT. 11, 2014 - CHANGED PARCEL NUMBER 7 TO PARCEL 6; PROPERTY OWNER NAME CHANGED ON PARCEL 6.

8 DATES 8 TIMES 8 FILES

PROJECT REFERENCE NO. R-3421B	SHEET NO. EC-42/CONST.22
RW SHEET NO.	
ROADWAY DESIGN ENGINEER	HYDRAULICS ENGINEER



53 x 11 x 3
1.5 inch Skimmer
with 0.50 inch
Orifice Diameter
4 ft. weir
ID B-250

43 x 13 x 3
ID B-249

32 x 13 x 3
ID B-248

38 x 18 x 3
1.5 inch Skimmer
with 0.625 inch
Orifice Diameter
4 ft. weir
ID B-246

LINE TSD WITH STONE FOR
EROSION CONTROL CL B
W/GEOTEXTILE LINER

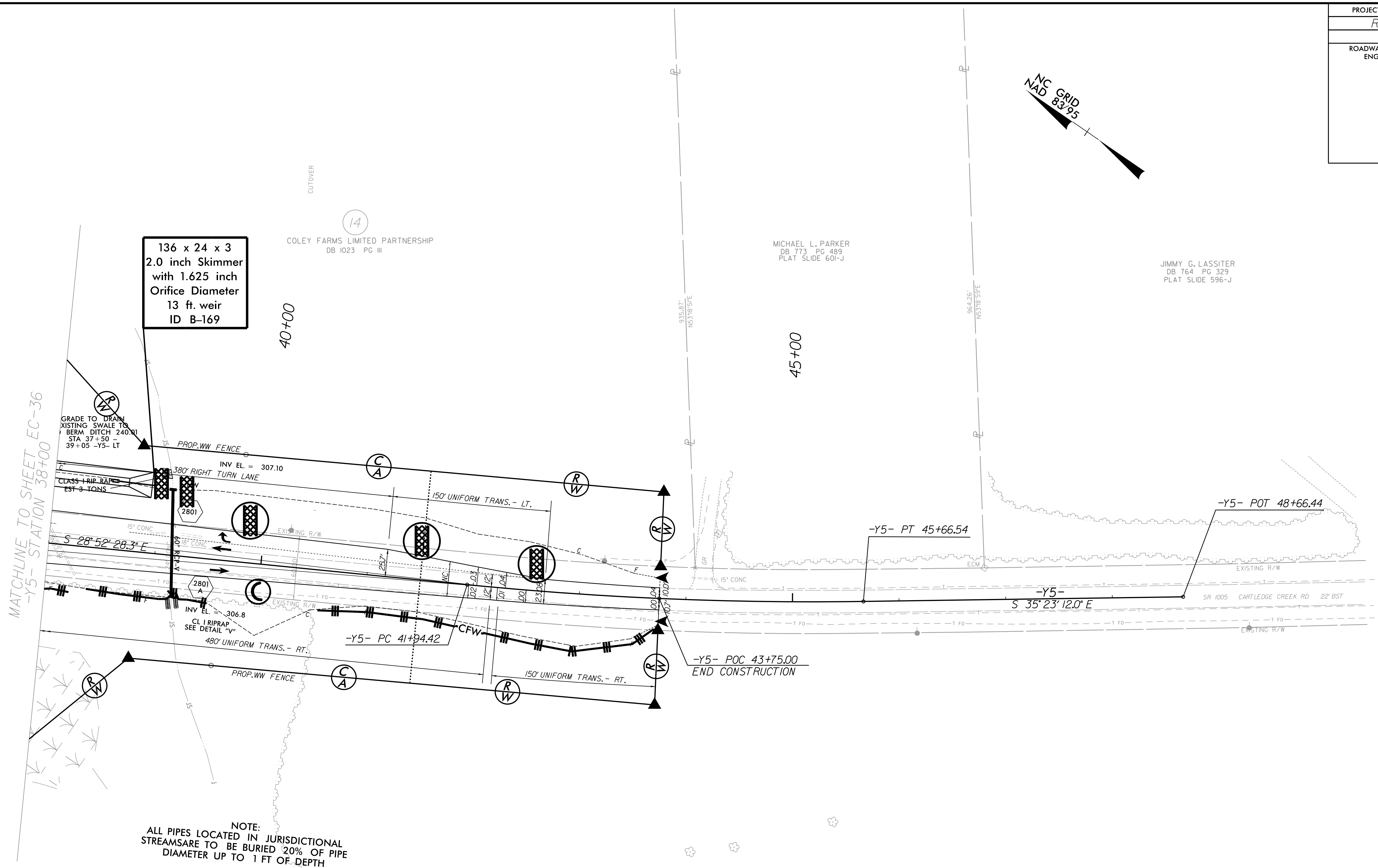
LINE TSD WITH STONE FOR
EROSION CONTROL CL B
W/GEOTEXTILE LINER

39 x 18 x 3
1.5 inch Skimmer
with 0.625 inch
Orifice Diameter
4 ft. weir
ID B-247

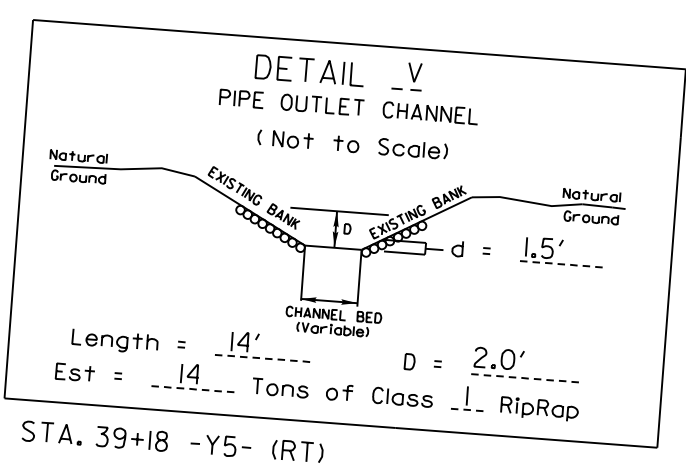
-Y5-
PI Sta 18+87.85
 $\Delta = 17'32'46.1''$ (LT)
D = 115'00"
L = 1,403.69
T = 707.38
R = 4,583.66
Se = 0.04
Runoff = 108.00'
D.S. = 60 mph

PLANS PREPARED BY :
RK&K
RUMMEL, KLEPPER & KAHL, LLP
900 RIDGEFIELD DRIVE SUITE 350
RALEIGH, NORTH CAROLINA 27609-3960
NC LICENSE NO. F-0112 • (919) 878-9560

PROJECT REFERENCE NO.	SHEET NO.
R-3421B	EC-43/CONST.23
RW SHEET NO.	
ROADWAY DESIGN ENGINEER	HYDRAULICS ENGINEER



NOTE:
ALL PIPES LOCATED IN JURISDICTIONAL
STREAMS ARE TO BE BURIED 20% OF PIPE
DIAMETER UP TO 1 FT OF DEPTH



-Y5-
PI Sta 43+80.68
 $\Delta = 6'30''43.7''$ (LT)
D = 1'45''00"
L = 372.12
T = 186.26
R = 3274.04
Se = 0.04
D.S. = 60 mph

PLANS PREPARED BY :
RK&K
RUMMEL, KLEPPER & KAHL, LLP
900 RIDGEFIELD DRIVE SUITE 350
RALEIGH, NORTH CAROLINA 27609-3960
NC LICENSE NO. F-0112 • (919) 878-9560

8 DATES
 8 TIMES
 8 FILES