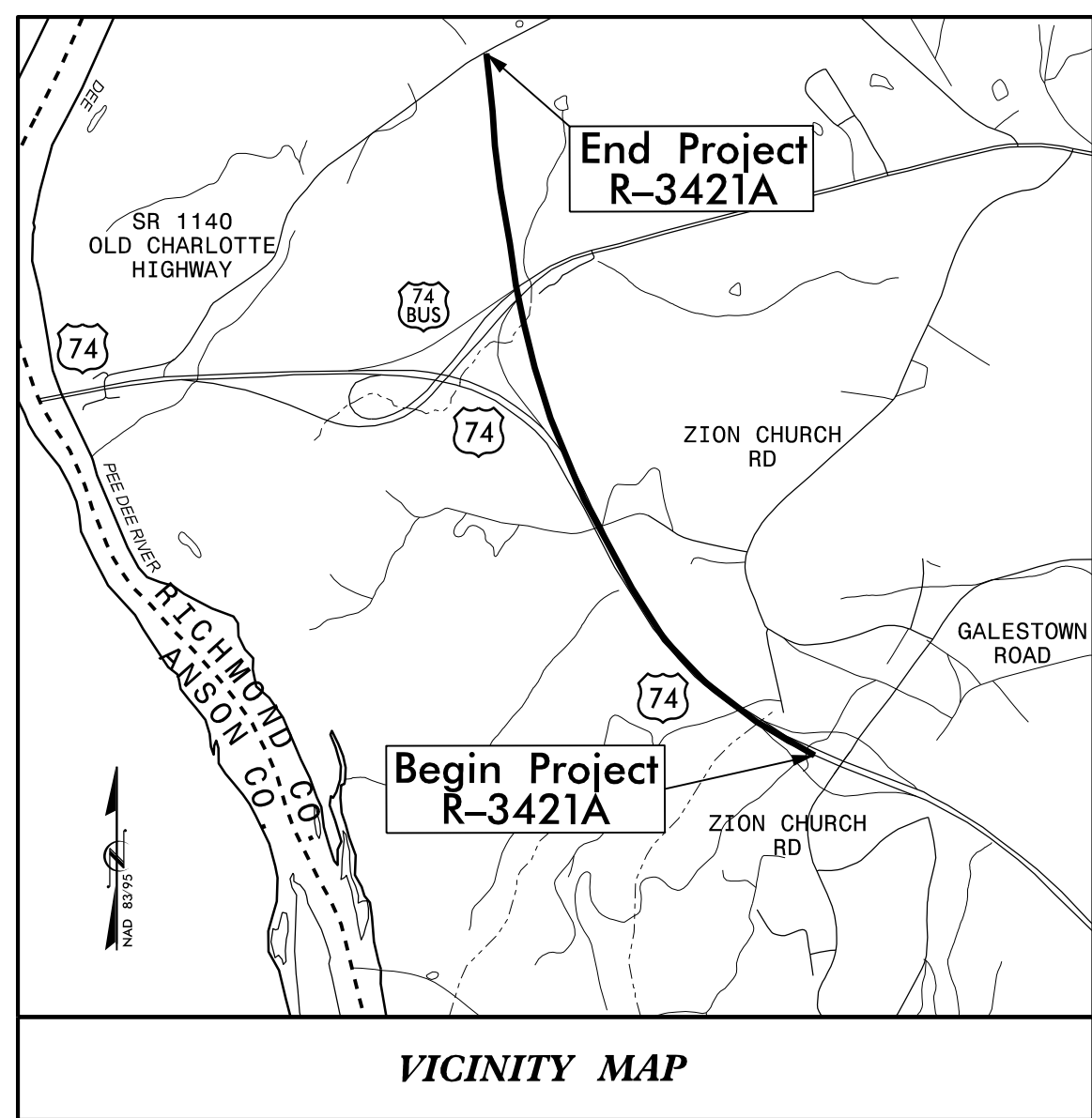


STATE OF NORTH CAROLINA
DIVISION OF HIGHWAYS

T.I.P. NO.	SHEET NO.
R-3421A	UO-1

TIP PROJECT: R-3421A

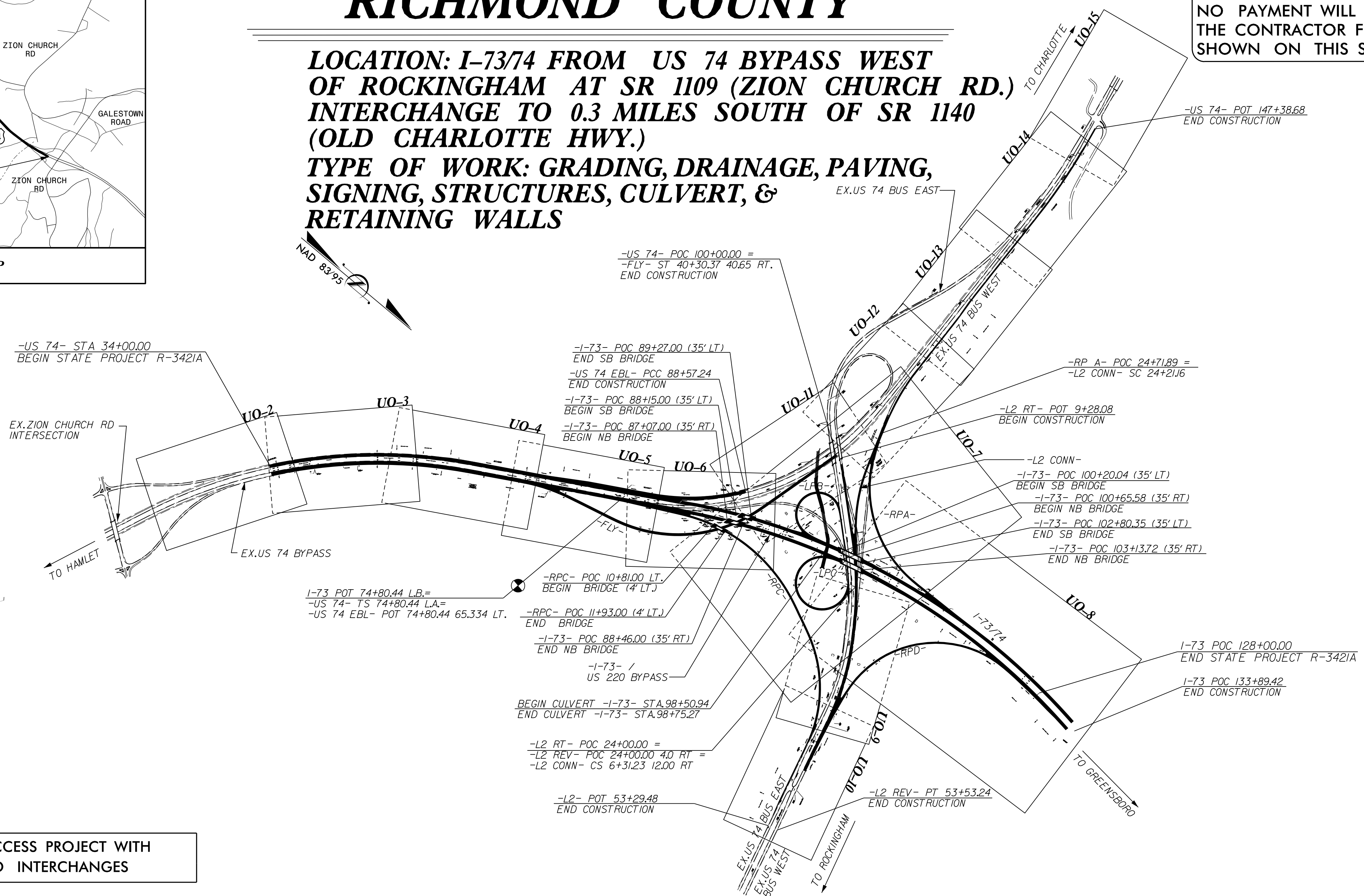


UTILITIES BY OTHERS PLANS RICHMOND COUNTY

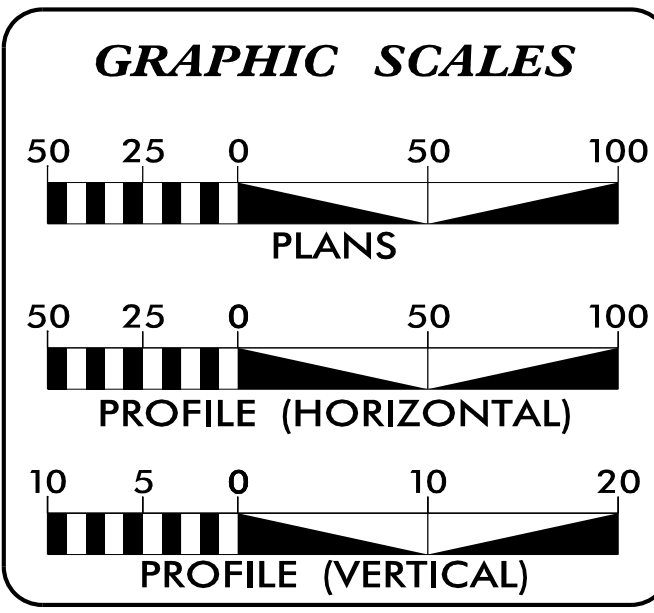
LOCATION: I-73/74 FROM US 74 BYPASS WEST OF ROCKINGHAM AT SR 1109 (ZION CHURCH RD.) INTERCHANGE TO 0.3 MILES SOUTH OF SR 1140 (OLD CHARLOTTE HWY.)

TYPE OF WORK: GRADING, DRAINAGE, PAVING, SIGNING, STRUCTURES, CULVERT, & RETAINING WALLS

NOTE:
ALL UTILITY WORK SHOWN ON THIS SHEET IS DONE BY OTHERS.
NO PAYMENT WILL BE MADE TO THE CONTRACTOR FOR UTILITY WORK SHOWN ON THIS SHEET.



THIS IS A CONTROLLED-ACCESS PROJECT WITH ACCESS BEING LIMITED TO INTERCHANGES



INDEX OF SHEETS

SHEET NO.	DESCRIPTION
UO-1	TITLE SHEET
UO-2 THRU UO-15	UBO PLAN SHEETS

UTILITY OWNERS WITH CONFLICTS

(A) POWER - DUKE ENERGY
 (B) POWER - DUKE ENERGY (TRANSMISSION)
 (C) WATER - RICHMOND COUNTY

PREPARED IN THE OFFICE OF:

License No. C-2639
401 Harrison Oaks Blvd., Suite 145 Cary, NC 27513
(919)-653-0001

Michael E. Davis	UTILITY COORDINATION PROJECT MANAGER
Harris S. Winters	PROJECT UTILITY COORDINATOR
Jordan K. Chapman	PROJECT UTILITY DESIGNER

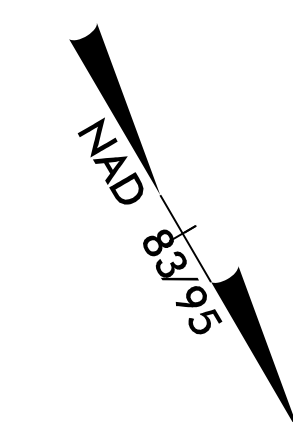
**DIVISION OF HIGHWAYS
UTILITIES UNIT**
1555 MAIL SERVICES CENTER
RALEIGH NC 27699-1555
PHONE (919) 707-6690
FAX (919) 250-4151

Travis L. Morgan, PE	DIVISION CONTACT #1
James D. Yow	DIVISION CONTACT #2

24-SEP-2019 13:53 S:\Server_Files\PROJECTS\2018\VA20181001\01_CAL YX-RKK-R-3421A\Design\Utilities\Engineering\UBO\Proj\R3421A_UO-1_tsh_UO-1.psh.dgn

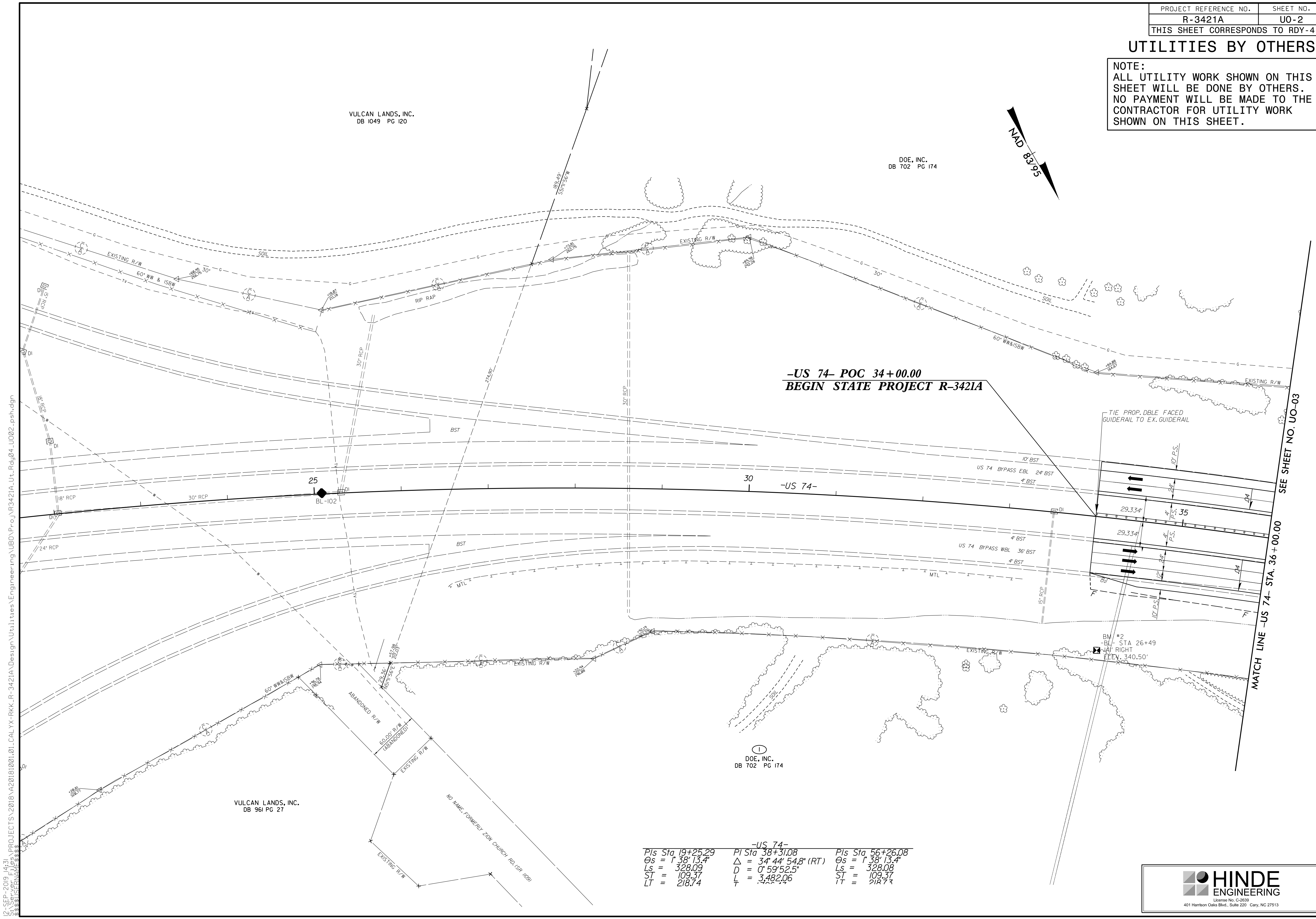
UTILITIES BY OTHERS

NOTE:
 ALL UTILITY WORK SHOWN ON THIS SHEET WILL BE DONE BY OTHERS.
 NO PAYMENT WILL BE MADE TO THE CONTRACTOR FOR UTILITY WORK SHOWN ON THIS SHEET.



VULCAN LANDS, INC.
 DB 1049 PG 120

DOE, INC.
 DB 702 PG 174



**-US 74- POC 34+00.00
 BEGIN STATE PROJECT R-3421A**

SEE SHEET NO. UO-03
 MATCH LINE -US 74- STA. 36+00.00

VULCAN LANDS, INC.
 DB 961 PG 27

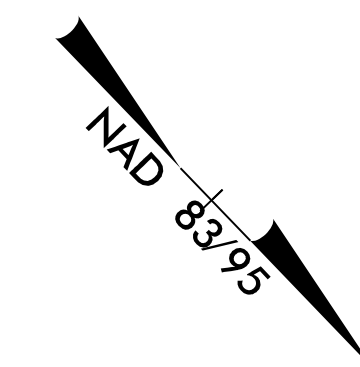
DOE, INC.
 DB 702 PG 174

-US 74-		
PI Sta 19+25.29	PI Sta 38+31.08	PI Sta 56+26.08
$\theta_s = 1^{\circ} 38' 13.4''$	$\Delta = 34^{\circ} 44' 54.8''$ (RT)	$\theta_s = 1^{\circ} 38' 13.4''$
$L_s = 328.09$	$D = 0^{\circ} 59' 52.5''$	$L_s = 328.08$
$ST = 109.37$	$L = 3,482.06$	$ST = 109.37$
$LT = 218.74$		$IT = 218.73$

I:\PROJECTS\2018\A20181001\01_CAL YX-RKK-R-3421A\Design\Utilities\Engineering\UBD\Proj\R3421A_Ut_Rdy04_U002_esh.dgn
 12-SEP-2019 14:51
 338851181

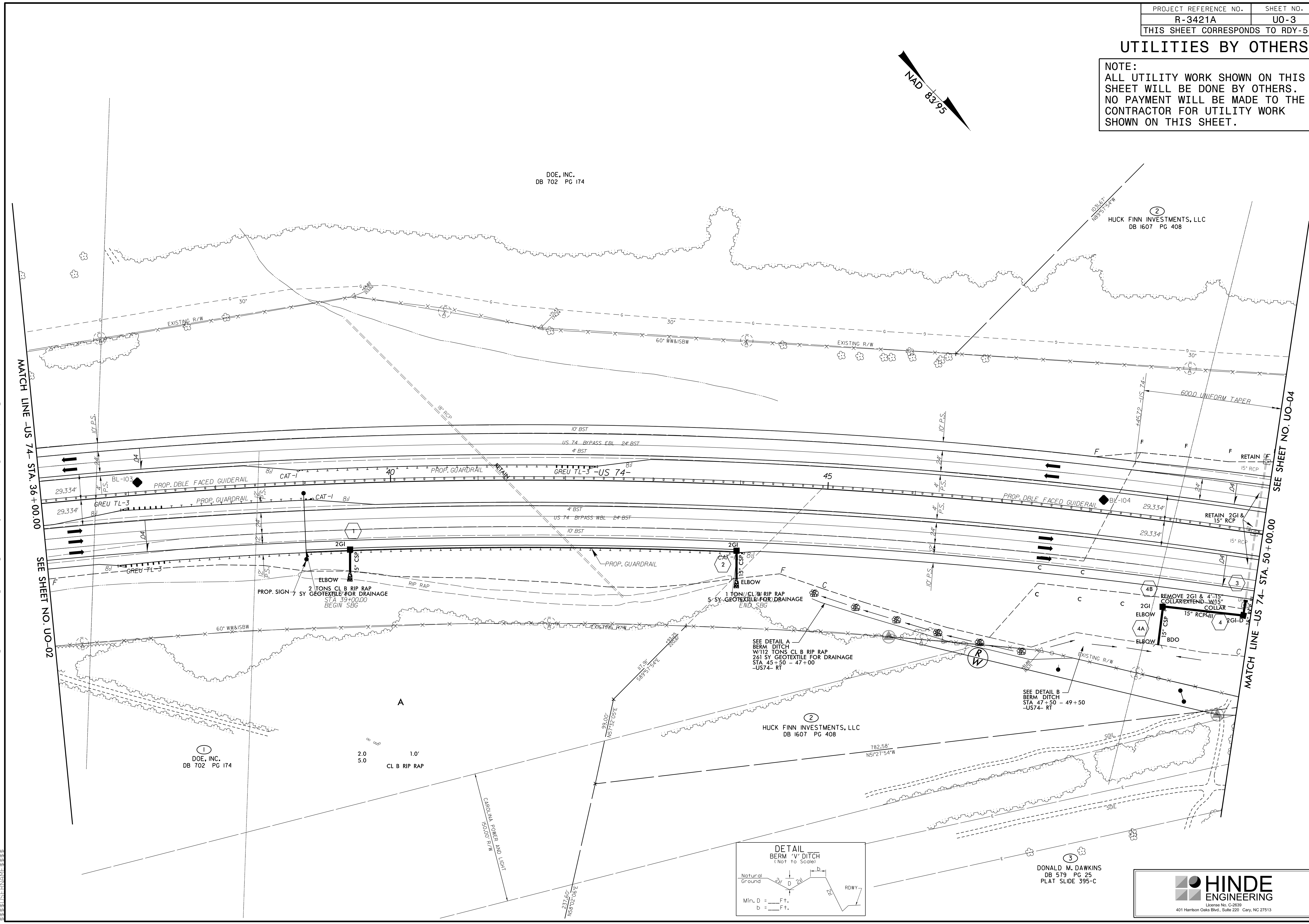
UTILITIES BY OTHERS

NOTE:
ALL UTILITY WORK SHOWN ON THIS SHEET WILL BE DONE BY OTHERS.
NO PAYMENT WILL BE MADE TO THE CONTRACTOR FOR UTILITY WORK SHOWN ON THIS SHEET.



DOE, INC.
DB 702 PG 174

HUCK FINN INVESTMENTS, LLC
DB 1607 PG 408



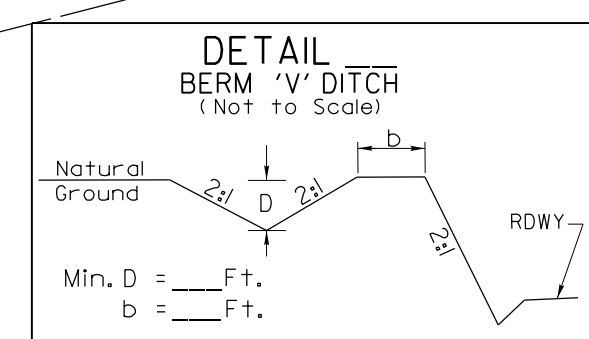
MATCH LINE -US 74- STA. 36+00.00
SEE SHEET NO. U0-02

MATCH LINE -US 74- STA. 50+00.00
SEE SHEET NO. U0-04

DOE, INC.
DB 702 PG 174

HUCK FINN INVESTMENTS, LLC
DB 1607 PG 408

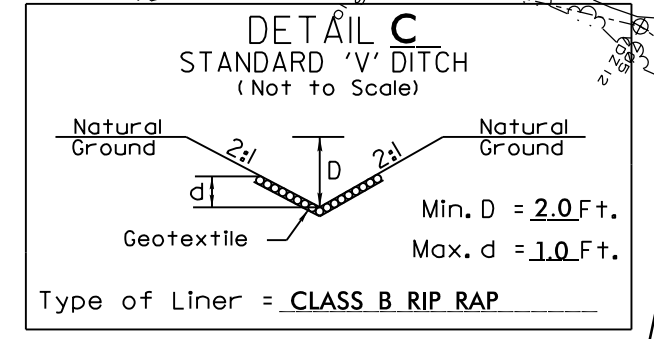
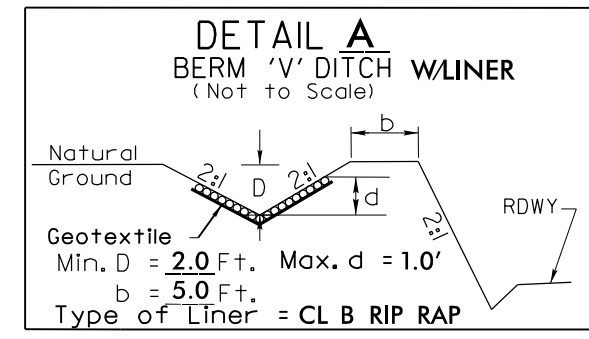
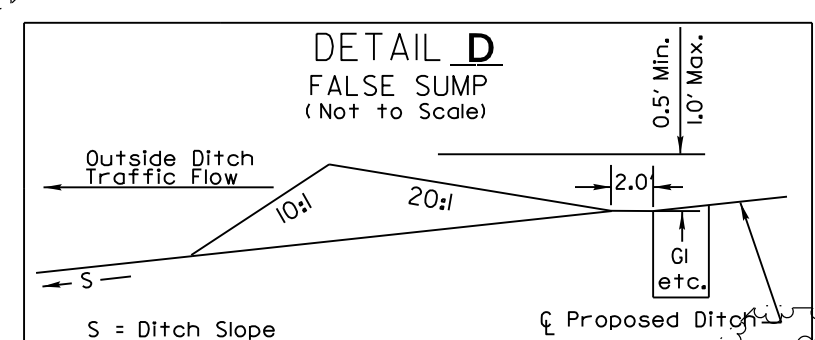
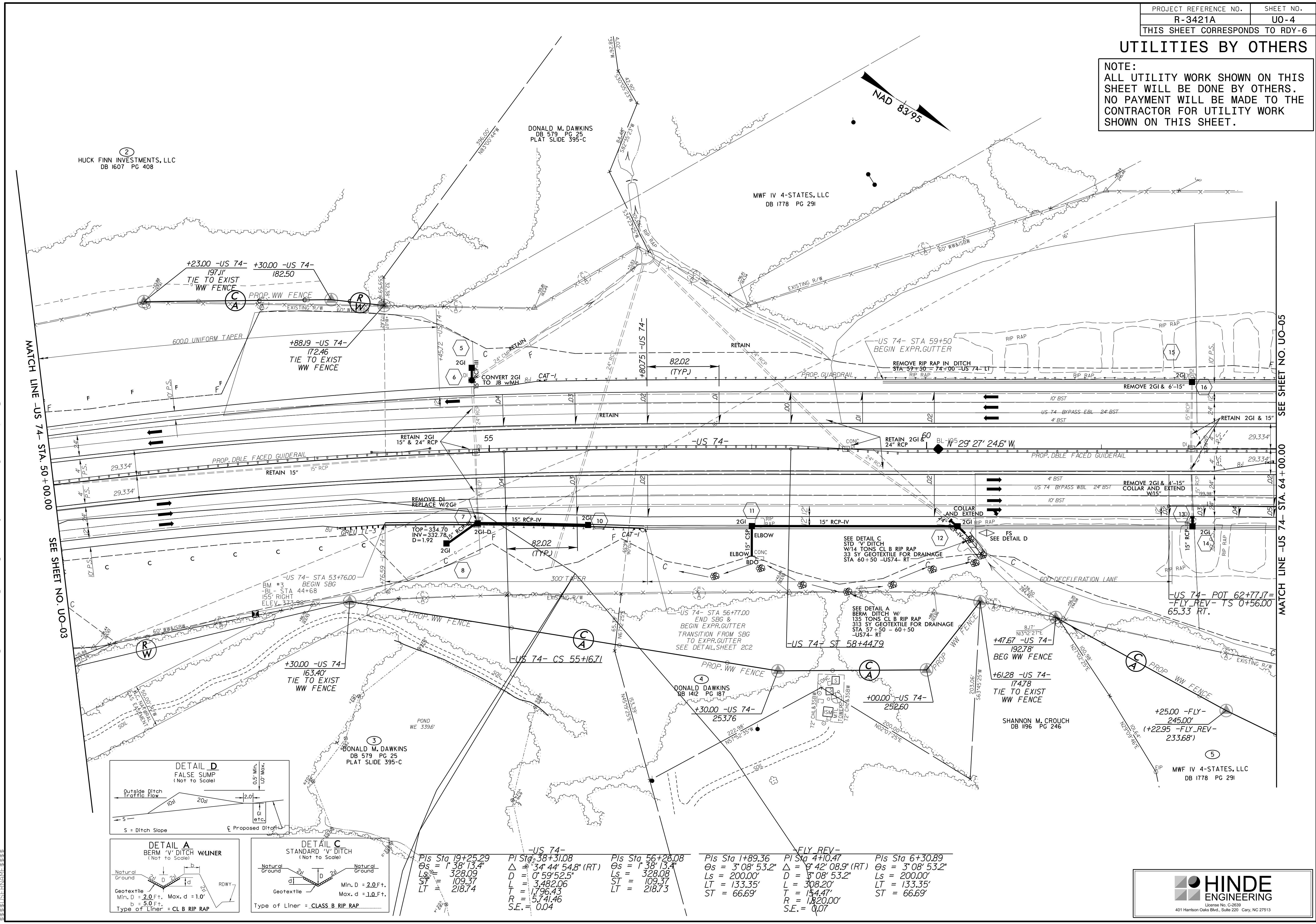
DONALD M. DAWKINS
DB 579 PG 25
PLAT SLIDE 395-C



I:\SEP-2019\1431\PROJECTS\2018\A20181001\01.CAL.YX-RKK-R-3421A\Design\Utilities\Engineering\UBD\Proj\NR3421A-Ut-Rdy05-U003_psh.dgn

UTILITIES BY OTHERS

NOTE:
 ALL UTILITY WORK SHOWN ON THIS SHEET WILL BE DONE BY OTHERS. NO PAYMENT WILL BE MADE TO THE CONTRACTOR FOR UTILITY WORK SHOWN ON THIS SHEET.

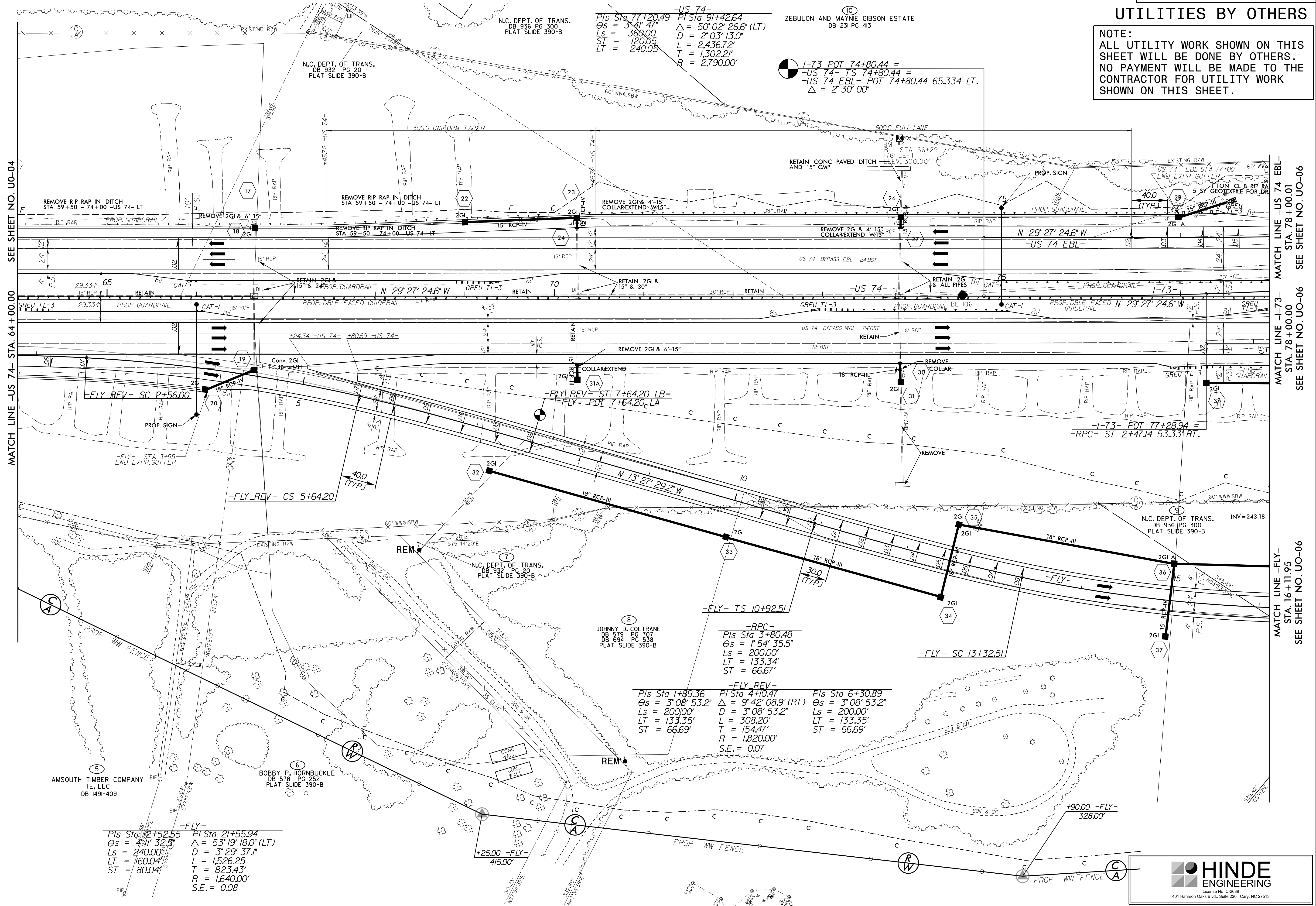


Pls Sta	Pls Sta	Pls Sta	Pls Sta	Pls Sta	Pls Sta
19+25.29	38+31.08	56+26.08	1+89.36	4+10.47	6+30.89
Os = 1' 38" 13.4"	Os = 34' 44" 54.8" (RT)	Os = 1' 38" 13.4"	Os = 3' 08" 53.2"	Os = 9' 42" 08.9" (RT)	Os = 3' 08" 53.2"
Ls = 328.09	D = 0' 59" 52.5"	Ls = 328.08	D = 3' 08" 53.2"	D = 3' 08" 53.2"	Ls = 200.00'
ST = 109.37	L = 3' 48" 20.6"	ST = 109.37	L = 133.35'	L = 308.20'	LT = 133.35'
LT = 218.74	T = 17' 36" 43"	LT = 218.73	T = 15.44'	T = 15.44'	ST = 66.69'
	R = 5' 74" 46"		R = 1,820.00'	R = 1,820.00'	
	S.E. = 0.04		S.E. = 0.07	S.E. = 0.07	

C:\SEP-2019\1431\PROJECTS\2018\A20181001\01_CAL_YX-RKK-R-3421A\Design\Utilities\Engineering\UBD\Proj\NR3421A-Ut-Rdy\06_U004_psh.dgn

UTILITIES BY OTHERS

NOTE:
 ALL UTILITY WORK SHOWN ON THIS SHEET WILL BE DONE BY OTHERS.
 NO PAYMENT WILL BE MADE TO THE CONTRACTOR FOR UTILITY WORK SHOWN ON THIS SHEET.



-US 74-
 PIs Sta 77+20.49 PIs Sta 91+42.64
 $\Theta_s = 3^\circ 41' 47''$ $\Delta = 50^\circ 02' 26.6''$ (LT)
 $L_s = 369.00$ $D = 2^\circ 03' 13.0''$
 $ST = 120.05$ $L = 2,436.72'$
 $LT = 240.05$ $T = 1,302.21'$
 $R = 2,790.00'$

1-73 POT 74+80.44 =
-US 74- TS 74+80.44 =
-US 74 EBL- POT 74+80.44 65.334 LT.
 $\Delta = 2^\circ 30' 00''$

-RPC-
 PIs Sta 3+80.48
 $\Theta_s = 1^\circ 54' 35.5''$
 $L_s = 200.00'$
 $LT = 133.34'$
 $ST = 66.67'$

-FLY REV-
 PIs Sta 1+89.36 PIs Sta 4+10.47 PIs Sta 6+30.89
 $\Theta_s = 3^\circ 08' 53.2''$ $\Delta = 9^\circ 42' 08.9''$ (RT) $\Theta_s = 3^\circ 08' 53.2''$
 $L_s = 200.00'$ $D = 3^\circ 08' 53.2''$ $L_s = 200.00'$
 $LT = 133.35'$ $T = 308.20'$ $LT = 133.35'$
 $ST = 66.69'$ $R = 1,820.00'$ $ST = 66.69'$
 $S.E. = 0.07$

-FLY-
 PIs Sta 12+52.55 PIs Sta 21+55.94
 $\Theta_s = 4^\circ 31' 32.5''$ $\Delta = 53^\circ 19' 18.0''$ (LT)
 $L_s = 240.00'$ $D = 3^\circ 29' 37.1''$
 $LT = 160.04'$ $L = 1,526.25'$
 $ST = 80.04'$ $T = 823.43'$
 $R = 1,640.00'$
 $S.E. = 0.08$

R:\SEP-2019\1431\PROJECTS\2018\A20181001\01.CAL.YX-RKK-R-3421A\Design\Utilities\Engineering\UBD\Proj\NR3421A-UT-Redy7_U005_esh.dgn
 8/28/2019 11:58:38 AM

SEE SHEET NO. U0-04

MATCH LINE -US 74- STA. 64+00.00

MATCH LINE -US 74 EBL- STA. 78+00.01

MATCH LINE -I-73- STA. 78+00.00

MATCH LINE -FLY- STA. 16+11.95

SEE SHEET NO. U0-06

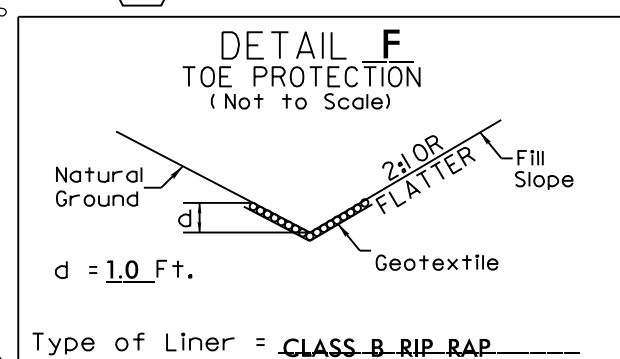
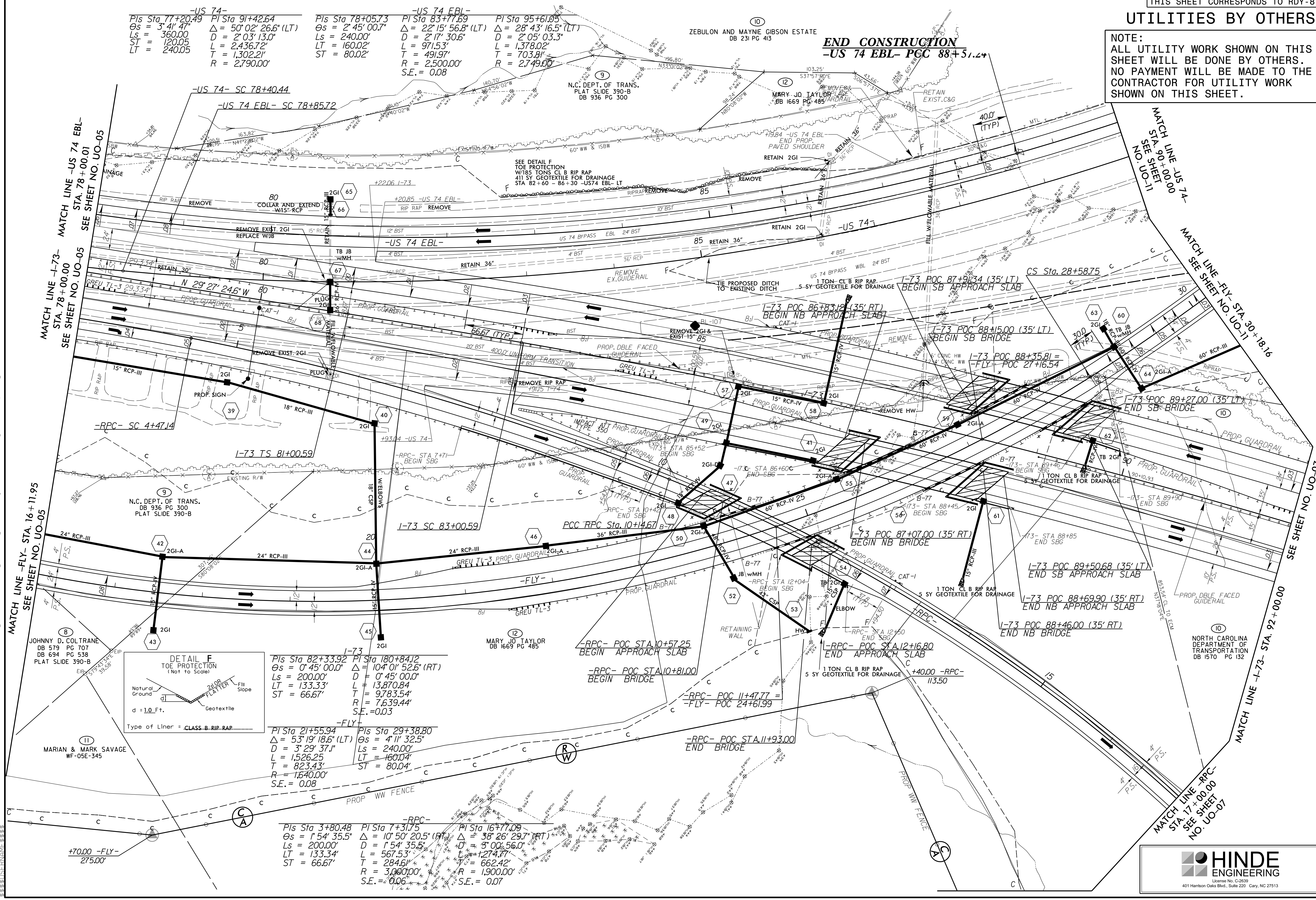
SEE SHEET NO. U0-06

SEE SHEET NO. U0-06

UTILITIES BY OTHERS

NOTE:
 ALL UTILITY WORK SHOWN ON THIS SHEET WILL BE DONE BY OTHERS.
 NO PAYMENT WILL BE MADE TO THE CONTRACTOR FOR UTILITY WORK SHOWN ON THIS SHEET.

-US 74-	-US 74 EBL-
PI Sta 77+20.49 $\Delta s = 3' 41.47''$ $Ls = 360.00$ $ST = 120.05$ $LT = 240.05$	PI Sta 81+42.64 $\Delta = 50' 02' 26.6'' (LT)$ $Ls = 2' 03' 13.0''$ $L = 2,436.72'$ $T = 1,302.21'$ $R = 2,790.00'$
PI Sta 78+05.73 $\Delta s = 2' 45' 00.7''$ $Ls = 240.00'$ $LT = 160.02'$ $ST = 80.02'$	PI Sta 83+71.69 $\Delta = 22' 15' 56.8'' (LT)$ $Ls = 2' 17' 30.6''$ $L = 971.53'$ $T = 491.97'$ $R = 2,500.00'$ $S.E. = 0.08$
PI Sta 95+61.05 $\Delta = 28' 43' 16.5'' (LT)$ $Ls = 2' 05' 03.3''$ $L = 1,378.02'$ $T = 703.81'$ $R = 2,749.00'$	



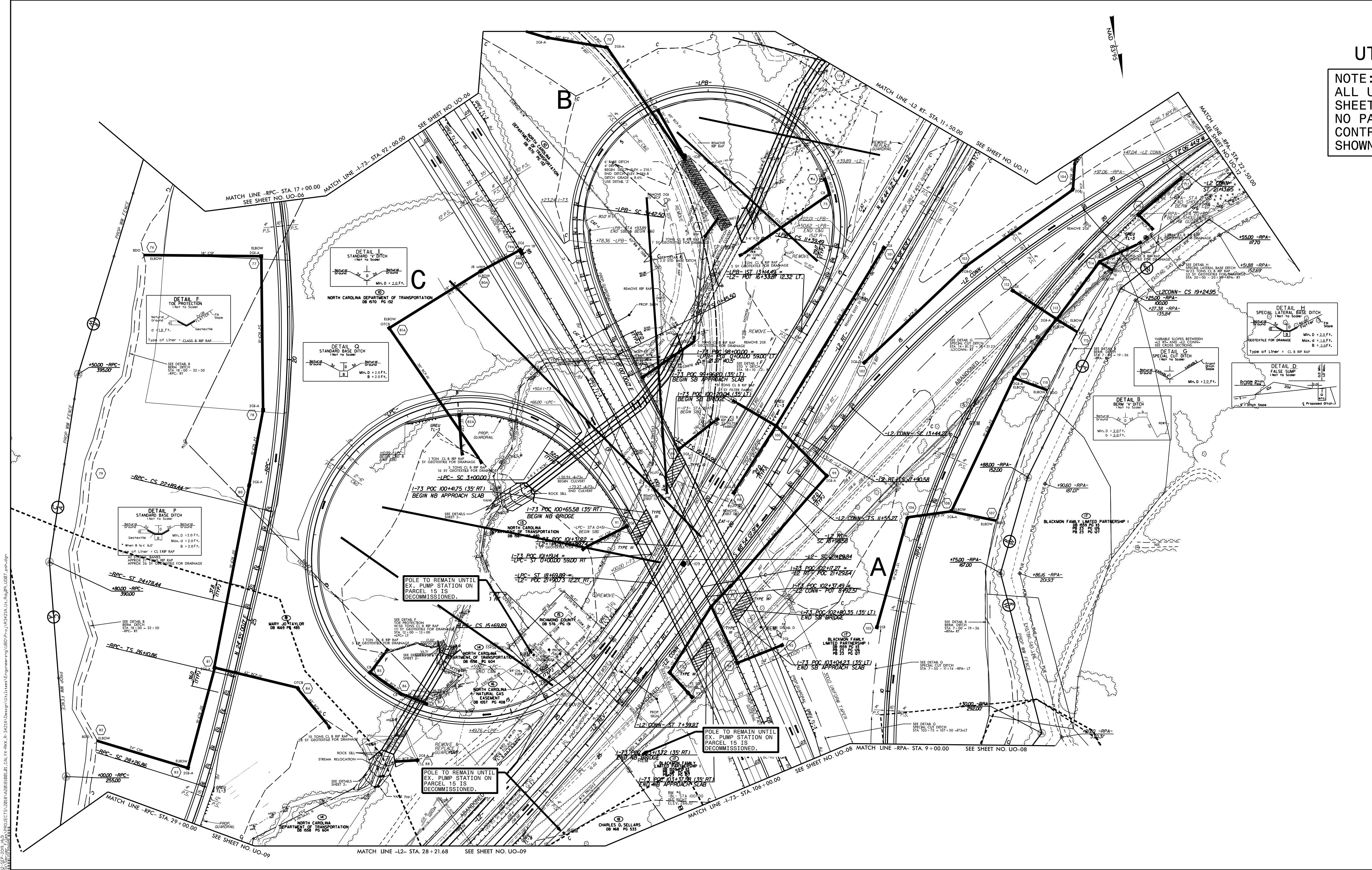
I-73	-FLY-
PI Sta 82+33.92 $\Delta s = 0' 45' 00.0''$ $Ls = 200.00'$ $LT = 133.33'$ $ST = 66.67'$	PI Sta 180+84.12 $\Delta = 104' 01' 52.6'' (RT)$ $D = 0' 45' 00.0''$ $L = 13,870.84'$ $T = 9,783.54'$ $R = 7,639.44'$ $S.E. = 0.03$
PI Sta 21+55.94 $\Delta = 53' 19' 18.6'' (LT)$ $Ls = 240.00'$ $L = 1,526.25'$ $T = 823.43'$ $R = 1,640.00'$ $S.E. = 0.08$	PI Sta 29+38.80 $\Delta s = 4' 11' 32.5''$ $Ls = 240.00'$ $LT = 160.04'$ $ST = 80.04'$

-RPC-	-RPC-	-RPC-
PI Sta 7+80.48 $\Delta s = 1' 54' 35.5''$ $Ls = 200.00'$ $LT = 133.34'$ $ST = 66.67'$	PI Sta 7+31.75 $\Delta = 10' 50' 20.5'' (RT)$ $D = 1' 54' 35.5''$ $L = 567.53'$ $T = 284.61'$ $R = 3,000.00'$ $S.E. = 0.06$	PI Sta 16+77.09 $\Delta = 38' 26' 29.7'' (RT)$ $D = 3' 00' 56.0''$ $L = 1,274.77'$ $T = 662.42'$ $R = 1,900.00'$ $S.E. = 0.07$

C:\SEP-2019\1431\PROJECTS\2018\A20181001\01_CAL\YX-RKK-R-3421A\Design\Utilities\Engineering\UBO-Proj\NR3421A-UT-Rdy\08_UO06_esh.dgn
 25-SEP-2019 14:31

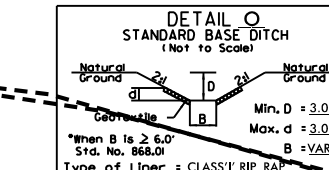
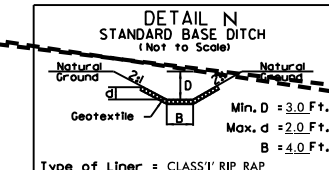
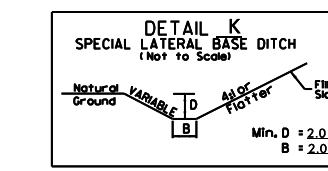
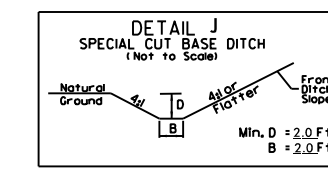
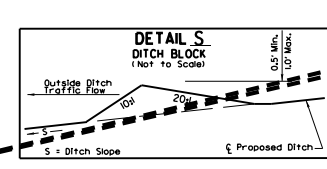
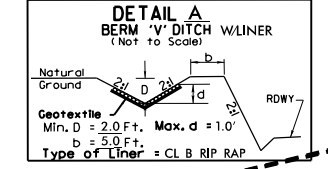
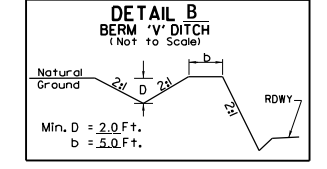
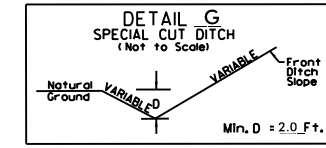
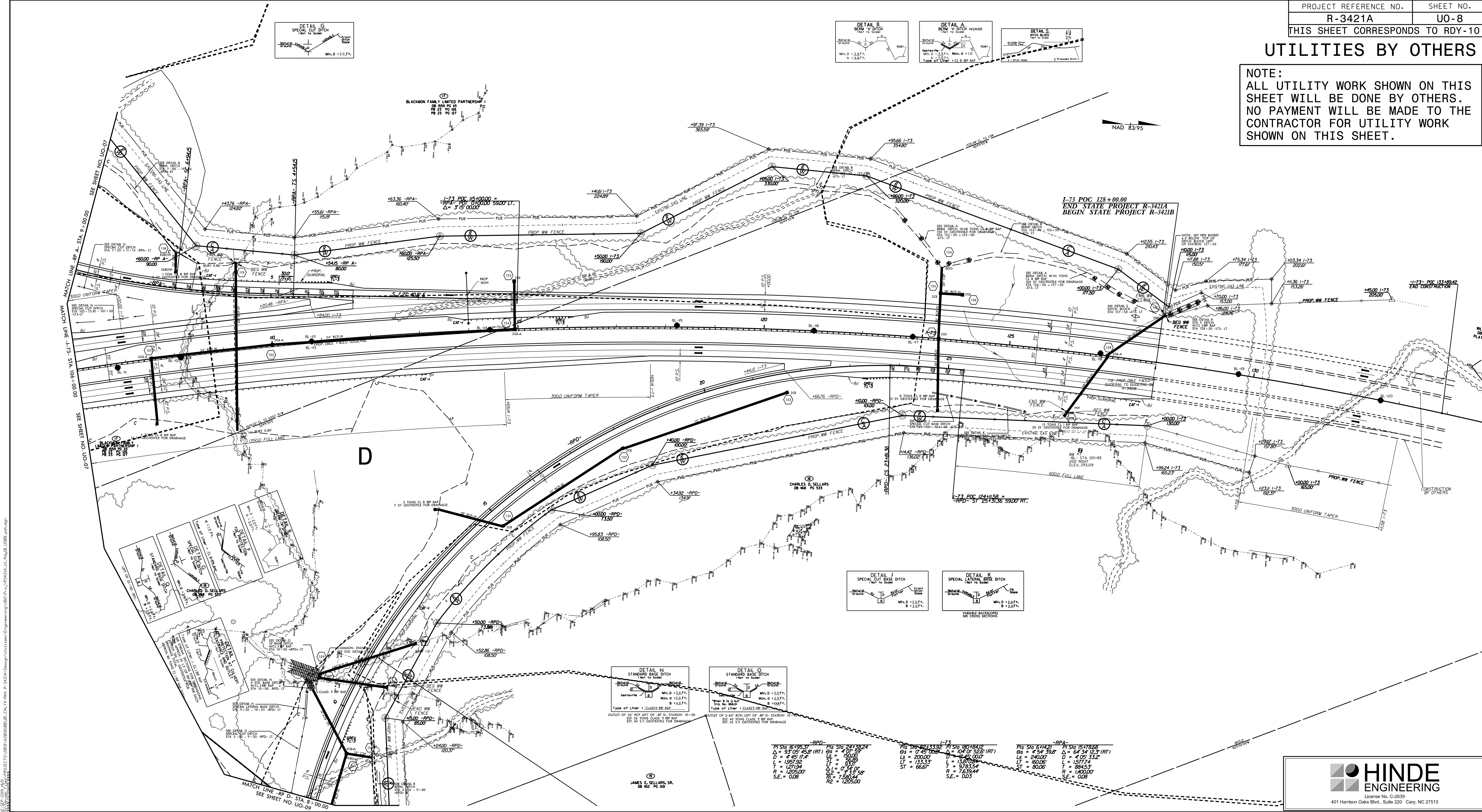
UTILITIES BY OTHERS

NOTE:
 ALL UTILITY WORK SHOWN ON THIS SHEET WILL BE DONE BY OTHERS.
 NO PAYMENT WILL BE MADE TO THE CONTRACTOR FOR UTILITY WORK SHOWN ON THIS SHEET.



UTILITIES BY OTHERS

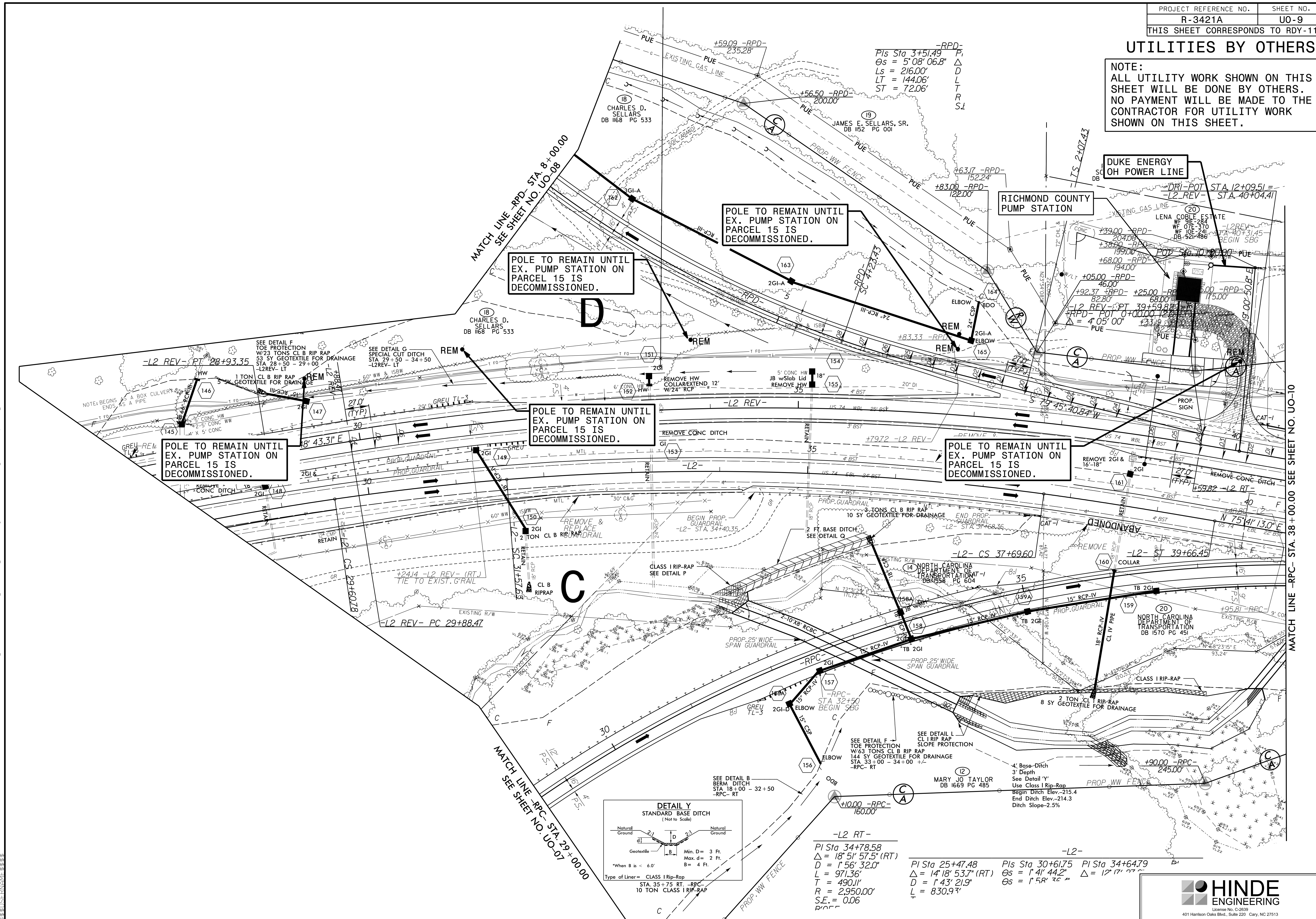
NOTE:
ALL UTILITY WORK SHOWN ON THIS SHEET WILL BE DONE BY OTHERS. NO PAYMENT WILL BE MADE TO THE CONTRACTOR FOR UTILITY WORK SHOWN ON THIS SHEET.



P1 SIG 16125.31 $\Delta = 93.05$ (RT) $D = 4.45$ (L) $L = 1.957$ $T = 1.27194$ $R = 1205.00$ $S.E. = 0.08$	P1 SIG 24138.24 $\Delta = 4.01$ $L = 1.600$ $T = 0.919$ $R = 1205.00$ $S.E. = 0.08$	P1 SIG 42133.92 $\Delta = 0.45$ $L = 1.333$ $T = 0.667$	P1 SIG 18018.02 $\Delta = 104$ (RT) $L = 13.709$ $T = 9.78354$ $R = 7.63944$ $S.E. = 0.03$	P1 SIG 6142.2 $\Delta = 54.398$ $L = 240.00$ $T = 160.00$ $R = 1400.00$ $S.E. = 0.08$	P1 SIG 15178.88 $\Delta = 64.34$ (RT) $L = 1.5774$ $T = 0.84657$ $R = 1400.00$ $S.E. = 0.08$
--	--	--	---	--	---

UTILITIES BY OTHERS

NOTE:
ALL UTILITY WORK SHOWN ON THIS SHEET WILL BE DONE BY OTHERS. NO PAYMENT WILL BE MADE TO THE CONTRACTOR FOR UTILITY WORK SHOWN ON THIS SHEET.



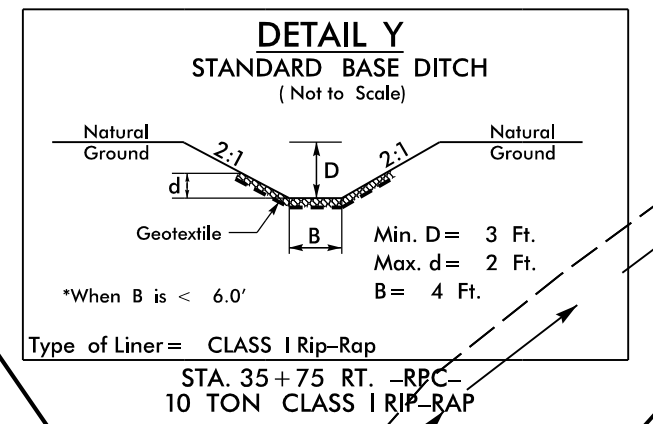
POLE TO REMAIN UNTIL EX. PUMP STATION ON PARCEL 15 IS DECOMMISSIONED.

POLE TO REMAIN UNTIL EX. PUMP STATION ON PARCEL 15 IS DECOMMISSIONED.

POLE TO REMAIN UNTIL EX. PUMP STATION ON PARCEL 15 IS DECOMMISSIONED.

POLE TO REMAIN UNTIL EX. PUMP STATION ON PARCEL 15 IS DECOMMISSIONED.

POLE TO REMAIN UNTIL EX. PUMP STATION ON PARCEL 15 IS DECOMMISSIONED.



-L2 RT-
 Pls Sta 34+78.58
 $\Delta = 18' 51'' 57.5'' (RT)$
 $D = 1' 56'' 32.0''$
 $L = 971.36'$
 $T = 490.11'$
 $R = 2,950.00'$
 $S.E. = 0.06$

-L2-
 Pls Sta 25+47.48
 $\Delta = 14' 18'' 53.7'' (RT)$
 $D = 1' 43'' 21.9''$
 $L = 830.93'$
 Pls Sta 30+61.75
 $\Delta = 12' 17'' 27.0''$
 $\Delta = 12' 17'' 27.0''$



C:\SEP-2019\1431\PROJECTS\2018\A20181001\01_CAL YX-RKK-R-3421A\Design\Utilities\Engineering\UBD\Proj\R3421A-Ut-Rdyl1-U009_psh.dgn
 3/28/2019 10:58:38 AM

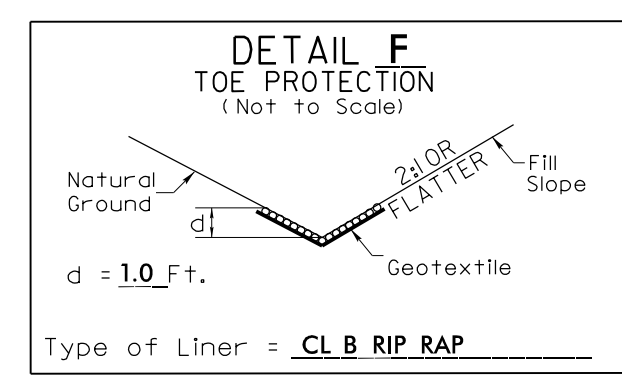
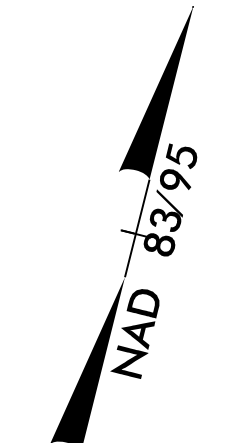
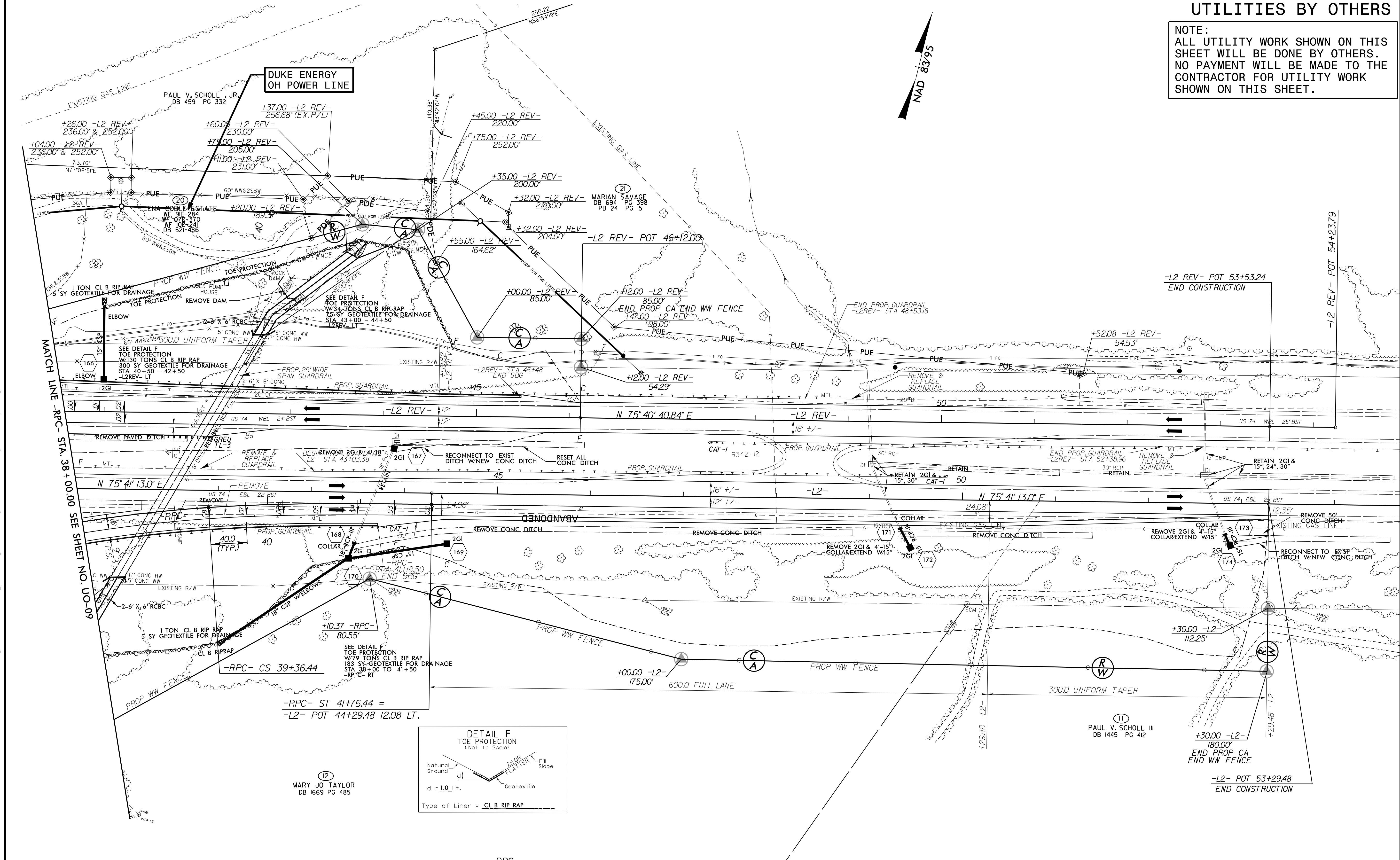
MATCH LINE -RPC- STA. 38+00.00 SEE SHEET NO. U0-10

MATCH LINE -RPD- STA. 8+00.00 SEE SHEET NO. U0-08

MATCH LINE -RPC- STA. 29+00.00 SEE SHEET NO. U0-07

UTILITIES BY OTHERS

NOTE:
ALL UTILITY WORK SHOWN ON THIS SHEET WILL BE DONE BY OTHERS. NO PAYMENT WILL BE MADE TO THE CONTRACTOR FOR UTILITY WORK SHOWN ON THIS SHEET.

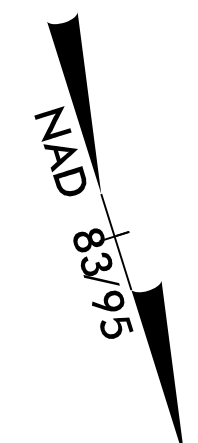


-RPC-
 PI Sta 34+08.41 PIs Sta 40+16.49
 $\Delta = 42^\circ 22' 57.6''$ (RT) $\Theta_s = 4^\circ 35' 01.2''$
 $D = 3^\circ 49' 11.0''$ $L_s = 240.00'$
 $L = 1,109.58$ $LT = 160.05'$
 $T = 581.55'$ $ST = 80.05'$
 $R = 1,500.00'$

R:\SEP-2019\1431\PROJECTS\2018\A20181001\01_CAL YX-RKK-R-3421A\Design\Utilities\Engineering\UBO-Proj\NR3421A-Ut-Rdyl2_U010_psh.dgn
 3/28/2019 10:58:38 AM

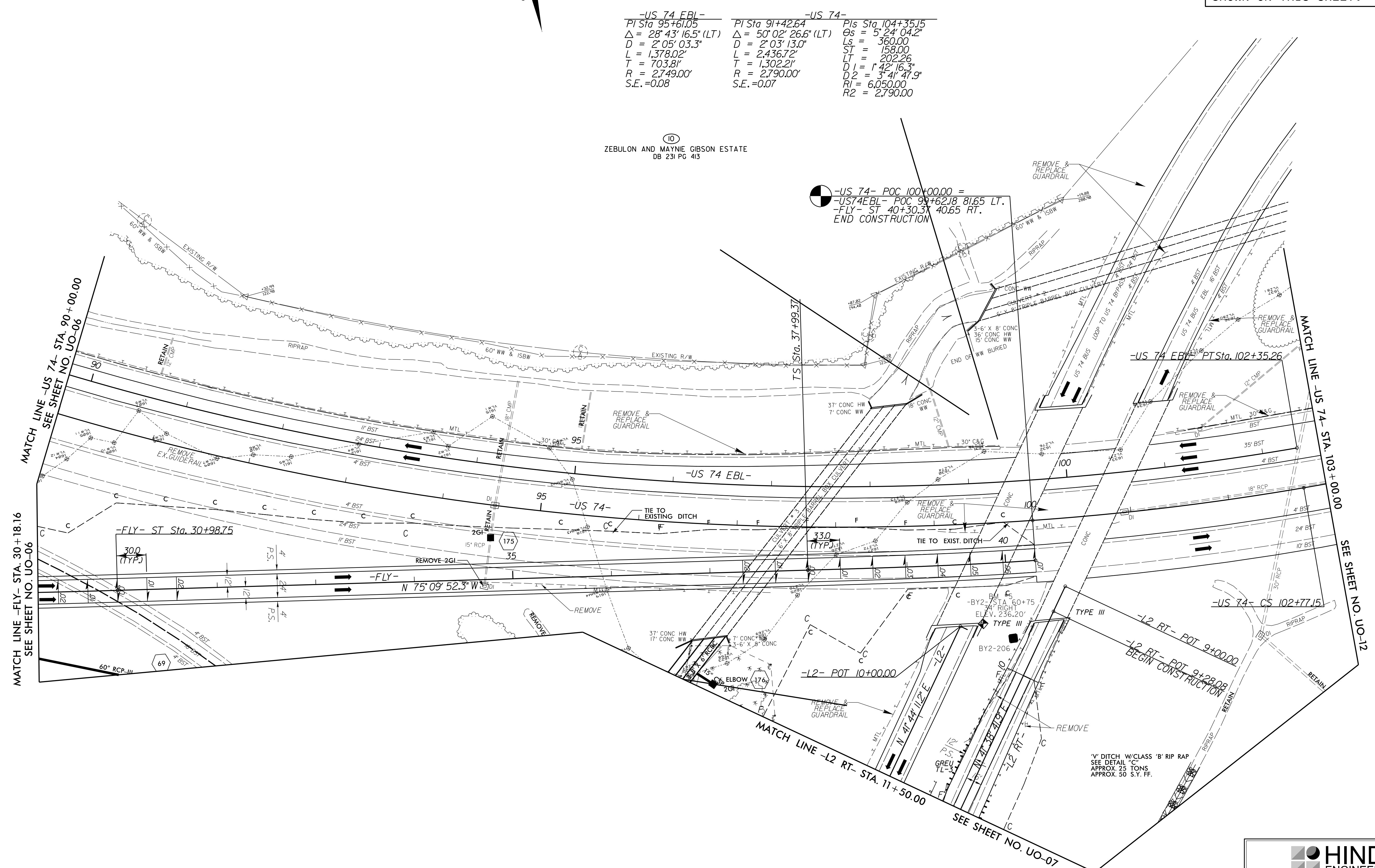
UTILITIES BY OTHERS

NOTE:
ALL UTILITY WORK SHOWN ON THIS SHEET WILL BE DONE BY OTHERS.
NO PAYMENT WILL BE MADE TO THE CONTRACTOR FOR UTILITY WORK SHOWN ON THIS SHEET.



-FLY-		-FLY-	
PIs Sta 12+52.55	PI Sta 21+55.94	PIs Sta 29+38.80	PIs Sta 39+53.39
$\Theta s = 4' 11' 32.5''$	$\Delta = 53' 19' 18.0''$ (LT)	$\Theta s = 4' 11' 32.5''$	$\Theta s = 2' 20' 16.3''$
$Ls = 240.00'$	$D = 3' 29' 37.1''$	$Ls = 240.00'$	$Ls = 231.00'$
$LT = 160.04'$	$L = 1,526.25'$	$LT = 160.04'$	$LT = 154.01'$
$ST = 80.04'$	$T = 823.43'$	$ST = 80.04'$	$ST = 77.01'$
	$R = 1,640.00'$		
	$S.E. = 0.08$		

-US 74 EBL-		-US 74-	
PI Sta 95+61.05	PI Sta 91+42.64	PIs Sta 104+35.15	
$\Delta = 28' 43' 16.5''$ (LT)	$\Delta = 50' 02' 26.6''$ (LT)	$\Theta s = 5' 24' 04.2''$	
$D = 2' 05' 03.3''$	$D = 2' 03' 13.0''$	$Ls = 360.00$	
$L = 1,378.02'$	$L = 2,436.72'$	$ST = 158.00$	
$T = 703.81'$	$T = 1,302.21'$	$LT = 202.26$	
$R = 2,749.00'$	$R = 2,790.00'$	$D1 = 1' 42' 16.3''$	
$S.E. = 0.08$	$S.E. = 0.07$	$D2 = 3' 41' 47.9''$	
		$R1 = 6,050.00$	
		$R2 = 2,790.00$	



10
ZEBULON AND MAYNIE GIBSON ESTATE
DB 231 PG 413

-US 74- POC 100+00.00 =
-US 74 EBL- POC 98+62.18 81.65 LT.
-FLY- ST 40+30.31 40.65 RT.
END CONSTRUCTION

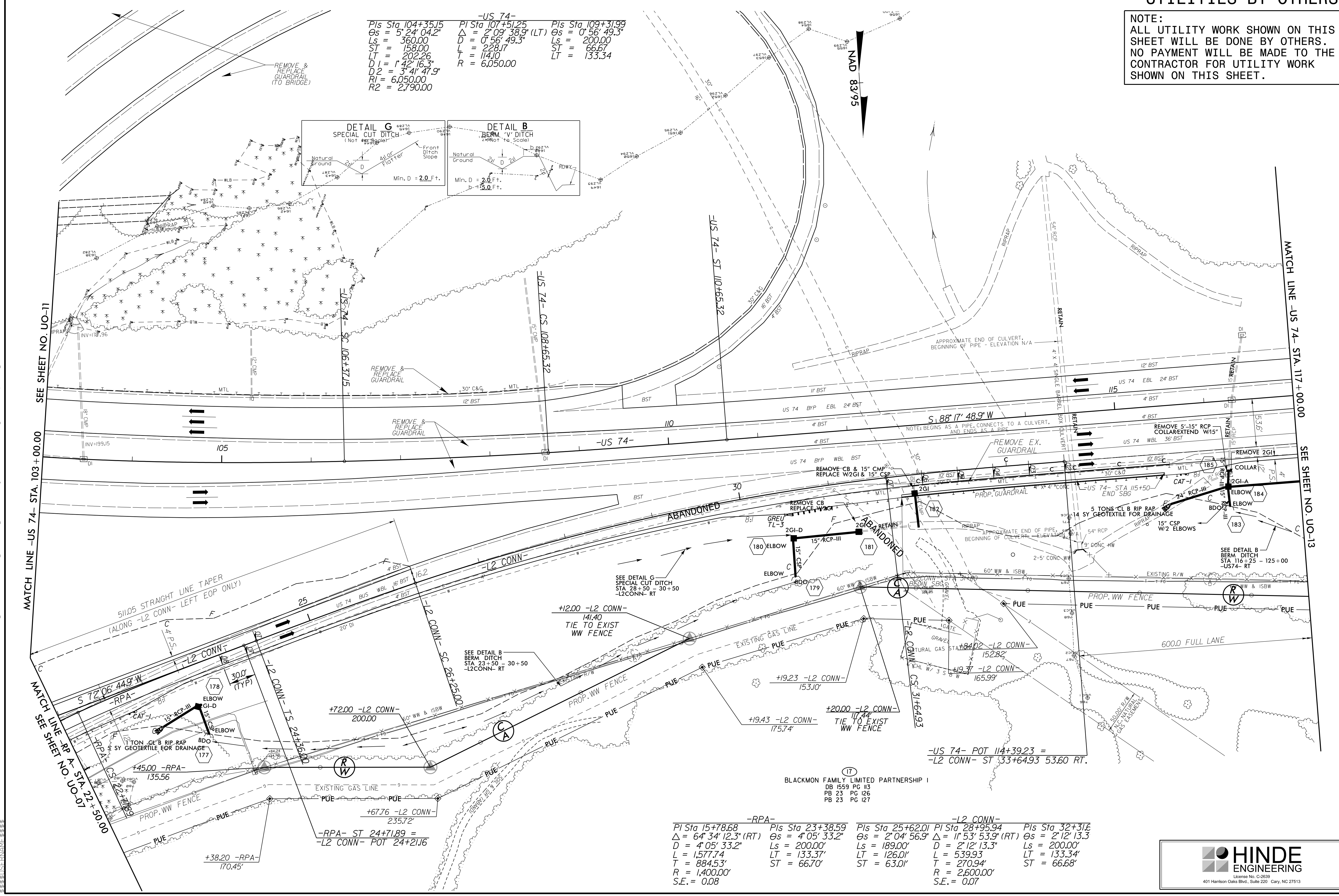
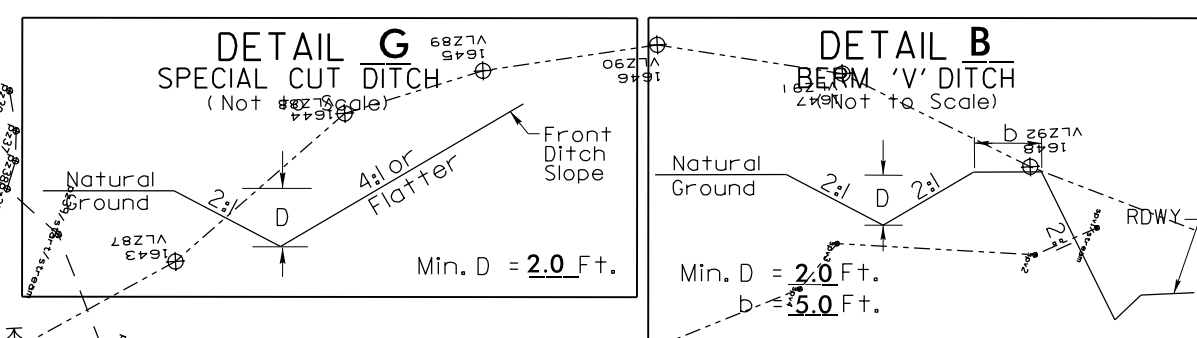
V' DITCH W/CLASS 'B' RIP RAP
SEE DETAIL 'C'
APPROX. 25 TONS
APPROX. 50 S.Y. FF.

I:\SEP-2019\14-32\PROJECTS\2018\A20181001\01_CAL YX-RKK-R-3421A\Design\Utilities\Engineering\UBD\Proj\NR3421A_Ut_Rdyl3_U011.psh.dgn
 3/23/2019 10:58:38 AM

UTILITIES BY OTHERS

NOTE:
ALL UTILITY WORK SHOWN ON THIS SHEET WILL BE DONE BY OTHERS. NO PAYMENT WILL BE MADE TO THE CONTRACTOR FOR UTILITY WORK SHOWN ON THIS SHEET.

-US 74-
 Pls Sta 104+35.15 Pls Sta 107+51.25 Pls Sta 109+31.99
 $\Delta s = 5' 24" 04.2"$ $\Delta = 2' 09" 38.9" (LT)$ $\Delta s = 0' 56" 49.3"$
 $Ls = 360.00$ $D = 0' 56" 49.3"$ $Ls = 200.00$
 $ST = 158.00$ $L = 228.17$ $ST = 66.67$
 $LT = 202.26$ $R = 114.10$ $LT = 133.34$
 $D1 = 1' 42" 16.3"$ $R = 6,050.00$
 $D2 = 3' 41" 47.9"$
 $R1 = 6,050.00$
 $R2 = 2,790.00$



MATCH LINE -US 74- STA 103+00.00

MATCH LINE -RPA- STA 22+50.00

MATCH LINE -US 74- STA 117+00.00

MATCH LINE -US 74- STA 117+00.00

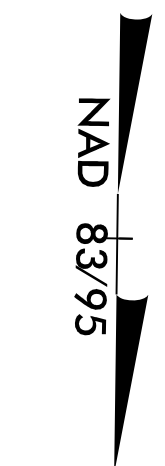
BLACKMON FAMILY LIMITED PARTNERSHIP I
 DB 1559 PG 113
 PB 23 PG 126
 PB 23 PG 127

-RPA-	-L2 CONN-	-L2 CONN-	-L2 CONN-	-L2 CONN-
Pls Sta 15+78.68	Pls Sta 23+38.59	Pls Sta 25+62.01	Pls Sta 28+95.94	Pls Sta 32+31.6
$\Delta s = 64' 34" 12.3" (RT)$	$\Delta s = 4' 05" 33.2"$	$\Delta s = 2' 04" 56.9"$	$\Delta = 11' 53" 53.9" (RT)$	$\Delta s = 2' 12" 13.3"$
$D = 4' 05" 33.2"$	$Ls = 200.00'$	$Ls = 189.00'$	$D = 2' 12" 13.3"$	$Ls = 200.00'$
$L = 1,577.74'$	$LT = 133.37'$	$LT = 126.01'$	$L = 539.93'$	$LT = 133.34'$
$T = 884.53'$	$ST = 66.70'$	$ST = 63.01'$	$T = 270.94'$	$ST = 66.68'$
$R = 1,400.00'$			$R = 2,600.00'$	
$S.E. = 0.08$			$S.E. = 0.07$	

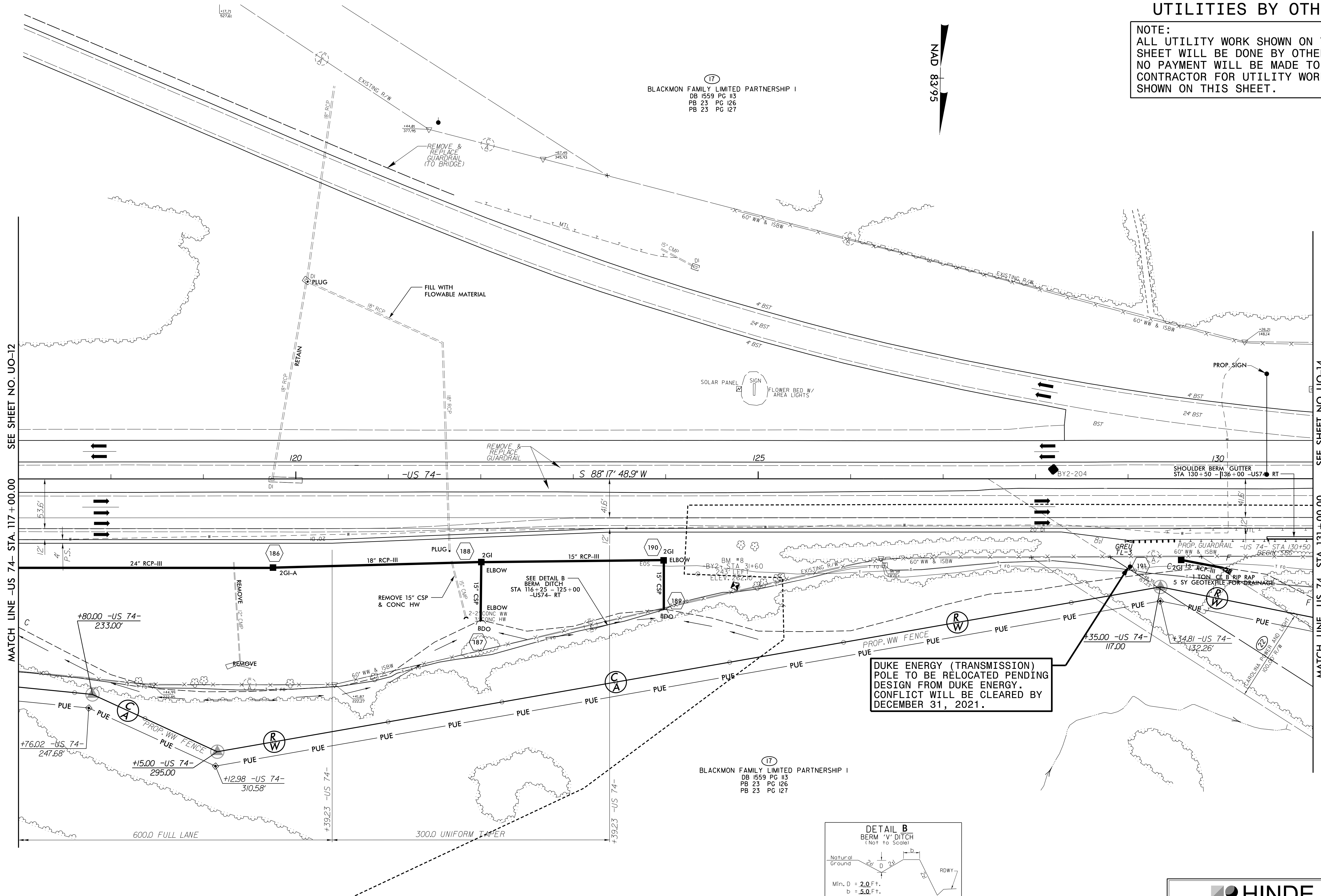
R:\SEP-2019\14-32-PROJECTS\2018\A20181001\01.CAL\X-RK-R-3421A\Design\Utilities\Engineering\UBO\Proj\R3421A-Ut-Rdy\14_U012_psh.dgn

UTILITIES BY OTHERS

NOTE:
 ALL UTILITY WORK SHOWN ON THIS SHEET WILL BE DONE BY OTHERS. NO PAYMENT WILL BE MADE TO THE CONTRACTOR FOR UTILITY WORK SHOWN ON THIS SHEET.

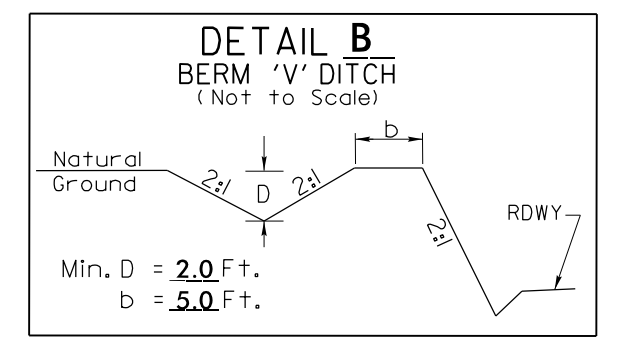


BLACKMON FAMILY LIMITED PARTNERSHIP I
 DB 1559 PG 113
 PB 23 PG 126
 PB 23 PG 127



DUKE ENERGY (TRANSMISSION) POLE TO BE RELOCATED PENDING DESIGN FROM DUKE ENERGY. CONFLICT WILL BE CLEARED BY DECEMBER 31, 2021.

BLACKMON FAMILY LIMITED PARTNERSHIP I
 DB 1559 PG 113
 PB 23 PG 126
 PB 23 PG 127

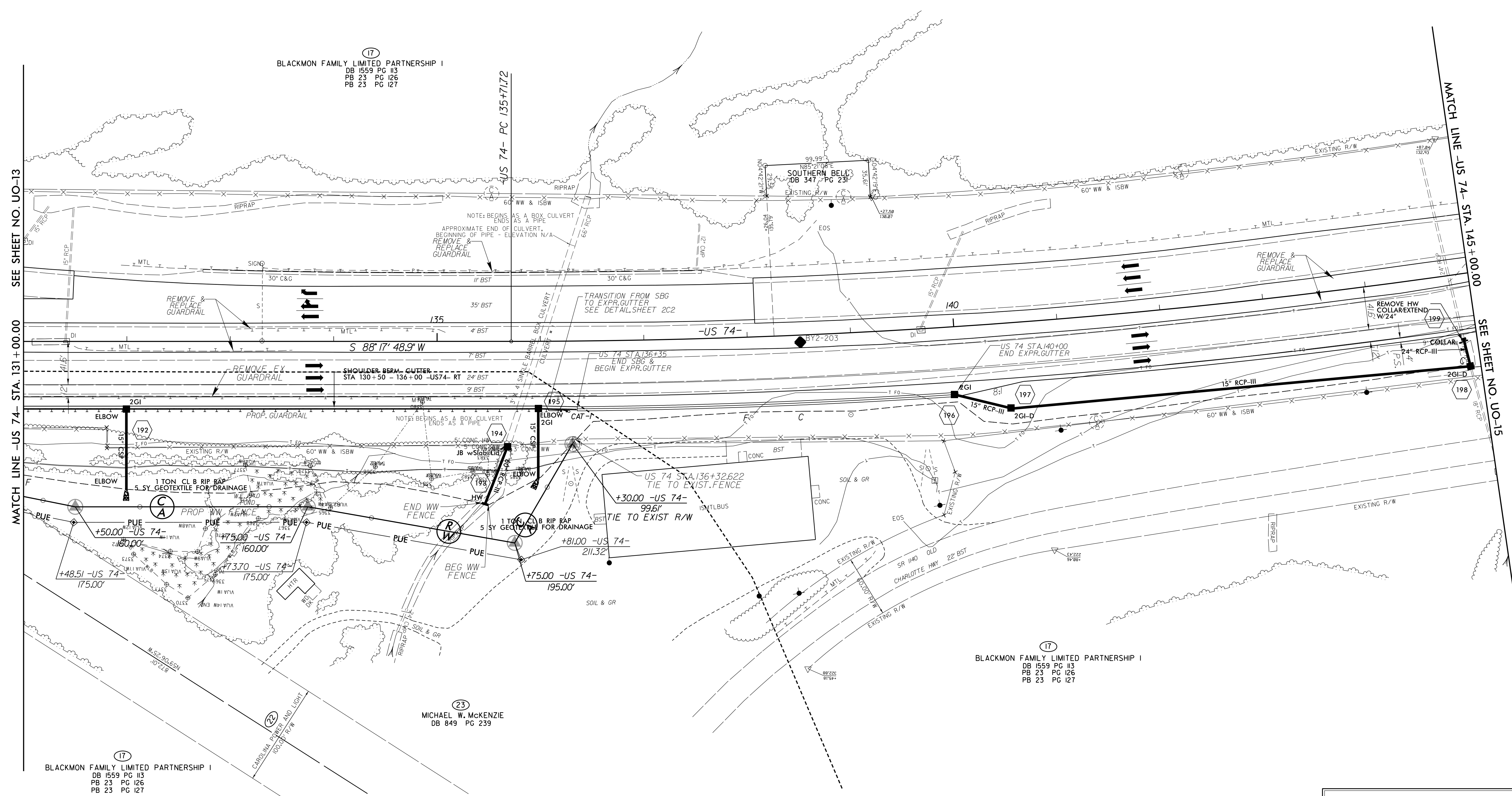


I:\SEP-2019\14-52\PROJECTS\2018\A20181001\01.CAL\YX-RKK-R-3421A\Design\Utilities\Engineering\UBO\Proj\NR3421A-Ut-Rdy\15_UO13_psh.dgn
 3/23/2020 10:58:38 AM

UTILITIES BY OTHERS

NOTE:
ALL UTILITY WORK SHOWN ON THIS SHEET WILL BE DONE BY OTHERS. NO PAYMENT WILL BE MADE TO THE CONTRACTOR FOR UTILITY WORK SHOWN ON THIS SHEET.

-US 74-
PI Sta 140+67.57
 $\Delta = 8^{\circ} 43' 28.9" (LT)$
 $D = 0^{\circ} 52' 53.3"$
 $L = 989.786$
 $T = 495.85$
 $R = 6,500.00$



SEE SHEET NO. UO-13
MATCH LINE -US 74- STA. 131+00.00

MATCH LINE -US 74- STA. 145+00.00
SEE SHEET NO. UO-15

17
BLACKMON FAMILY LIMITED PARTNERSHIP I
DB 1559 PG 113
PB 23 PG 126
PB 23 PG 127

17
BLACKMON FAMILY LIMITED PARTNERSHIP I
DB 1559 PG 113
PB 23 PG 126
PB 23 PG 127

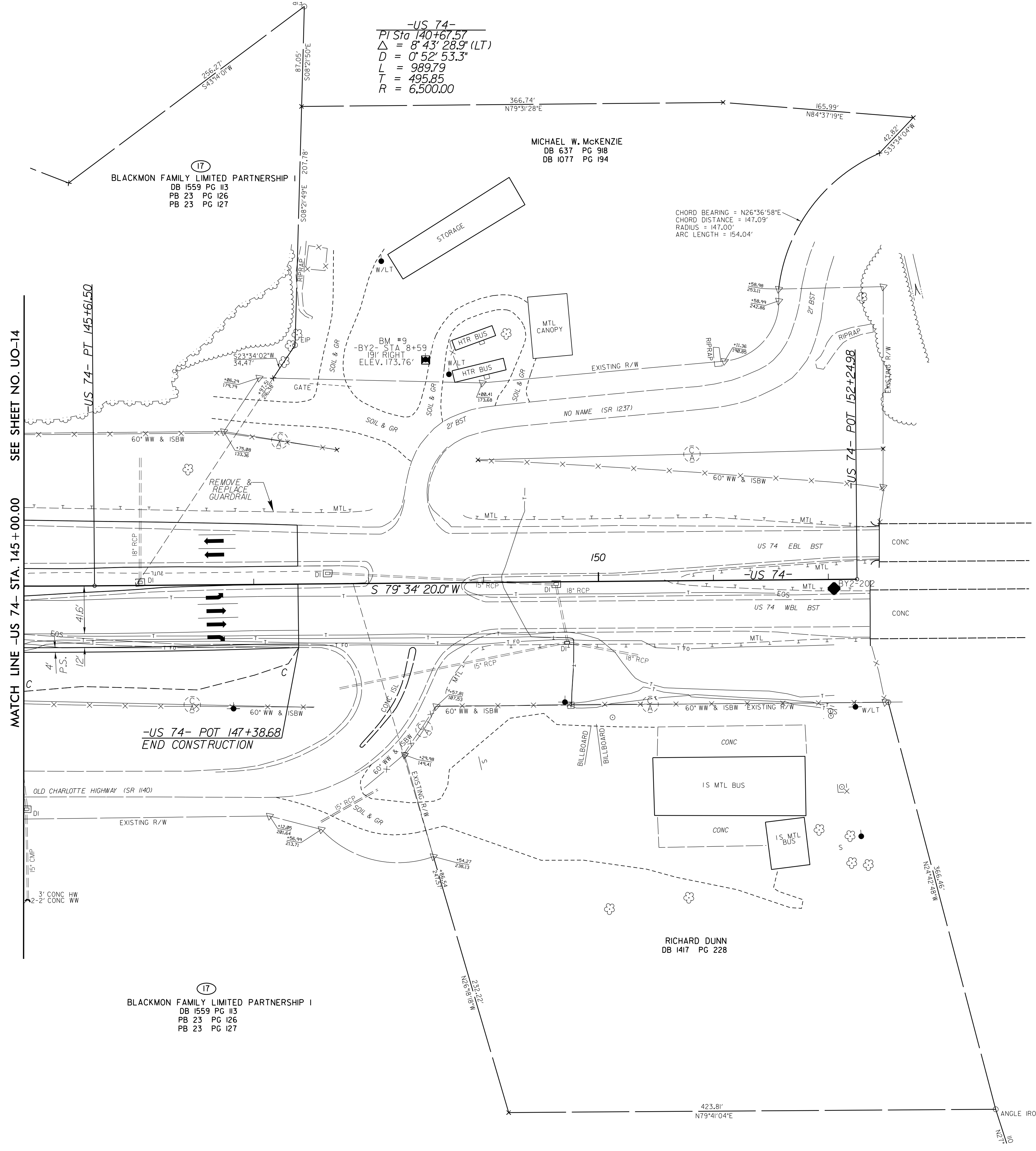
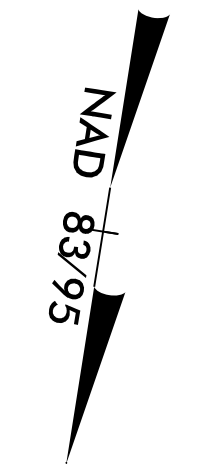
17
BLACKMON FAMILY LIMITED PARTNERSHIP I
DB 1559 PG 113
PB 23 PG 126
PB 23 PG 127

23
MICHAEL W. MCKENZIE
DB 849 PG 239

I:\SEP-2019\14-32\PROJECTS\2018\A20181001\01.CAL.YX-RKK-R-3421A\Design\Utilities\Engineering\UBO-Proj\NR3421A-Ut-Rdyl6_UO14_psh.dgn
 3/28/2019 10:58:38 AM

UTILITIES BY OTHERS

NOTE:
 ALL UTILITY WORK SHOWN ON THIS SHEET WILL BE DONE BY OTHERS.
 NO PAYMENT WILL BE MADE TO THE CONTRACTOR FOR UTILITY WORK SHOWN ON THIS SHEET.



-US 74-
 PI Sta 140+67.57
 $\Delta = 8^{\circ} 43' 28.9\"$ (LT)
 $D = 0^{\circ} 52' 53.3\"$
 $L = 989.79$
 $T = 495.85$
 $R = 6,500.00$

BLACKMON FAMILY LIMITED PARTNERSHIP I
 DB 1559 PG 113
 PB 23 PG 126
 PB 23 PG 127

MICHAEL W. MCKENZIE
 DB 637 PG 918
 DB 1077 PG 194

MATCH LINE -US 74- STA. 145+00.00 SEE SHEET NO. UO-14

-US 74- POT 147+38.68
 END CONSTRUCTION

RICHARD DUNN
 DB 1417 PG 228

BLACKMON FAMILY LIMITED PARTNERSHIP I
 DB 1559 PG 113
 PB 23 PG 126
 PB 23 PG 127

I:\SEP-2019\14-52\PROJECTS\2018\A20181001\01_CAL YX-RKK-R-3421A\Design\Utilities\Engineering\UBD\Proj\NR3421A-Ut-Rdyl7_UO15_psh.dgn
 3/28/2019 10:58:58 AM