

**This electronic collection of documents is provided
for the convenience of the user
and is Not a Certified Document –**

**The documents contained herein were originally issued
and sealed by the individuals whose names and license
numbers appear on each page, on the dates appearing
with their signature on that page.**

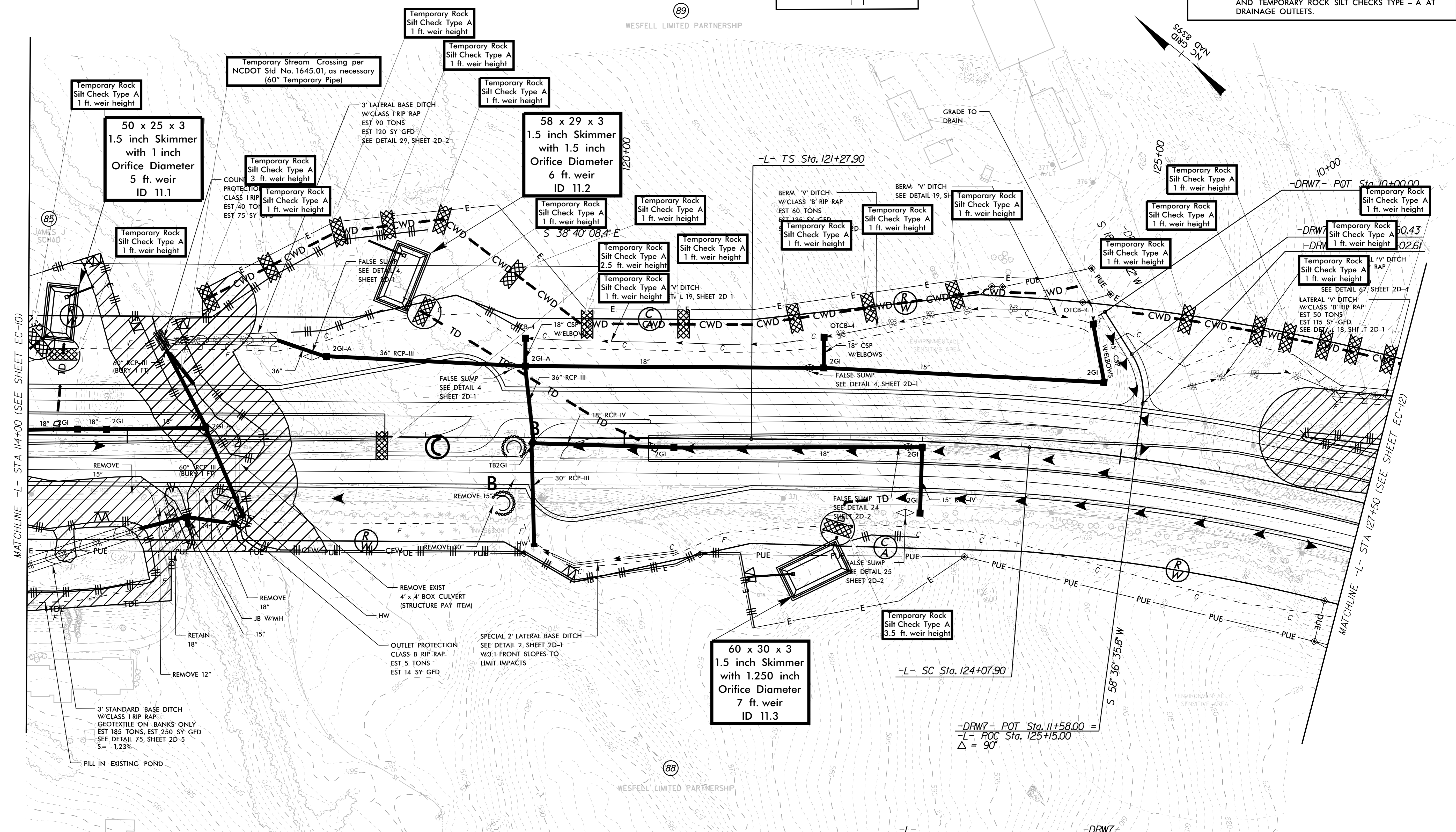
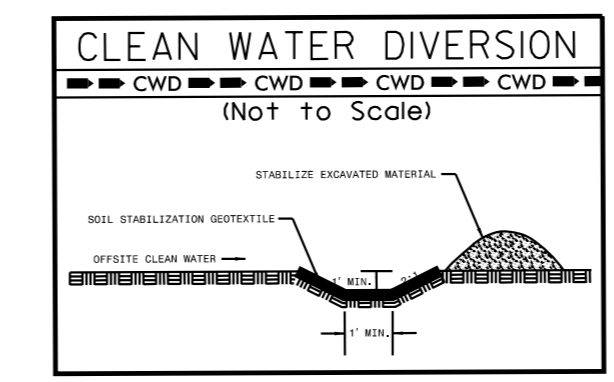
**This file or an individual page
shall not be considered a certified document.**

5/14/99

Kimley Horn
 421 FAYETTEVILLE STREET, SUITE 600
 RALEIGH, NC 27601

CLEARING AND GRUBBING
 EROSION CONTROL FOR
 CONSTRUCTION SHEET 11

NOTE:
 PLACE TEMPORARY ROCK SEDIMENT DAMS TYPE - B
 AND TEMPORARY ROCK SILT CHECKS TYPE - A AT
 DRAINAGE OUTLETS.



-L-	-DRW7-
PI Sta 123+14.62	PI Sta 10+77.62
$\Delta s = 4' 07" 26.8"$	$\Delta = 39' 51" 30.6" (RT)$
$Ls = 280.00'$	$D = 76' 23' 39.7"$
$LT = 186.72'$	$L = 52.17'$
$ST = 93.38'$	$T = 27.19'$
	$R = 75.00'$
	$SE = 0.07$

ENVIRONMENTALLY SENSITIVE AREA
 SEE PROJECT SPECIAL PROVISIONS

SEE SHEET 37 FOR -L- PROFILE
 SEE SHEET 57 FOR -DRW7- PROFILE

11/1/2018

(87)
 ROBERT A. &
 KRISTY L. WILHOIT

(88)
 WESFELL LIMITED PARTNERSHIP

(89)
 WESFELL LIMITED PARTNERSHIP

5/14/99

PROJECT REFERENCE NO. R-2530B	SHEET NO. EC-IIA/CONST.II
ROADWAY DESIGN ENGINEER	HYDRAULICS ENGINEER

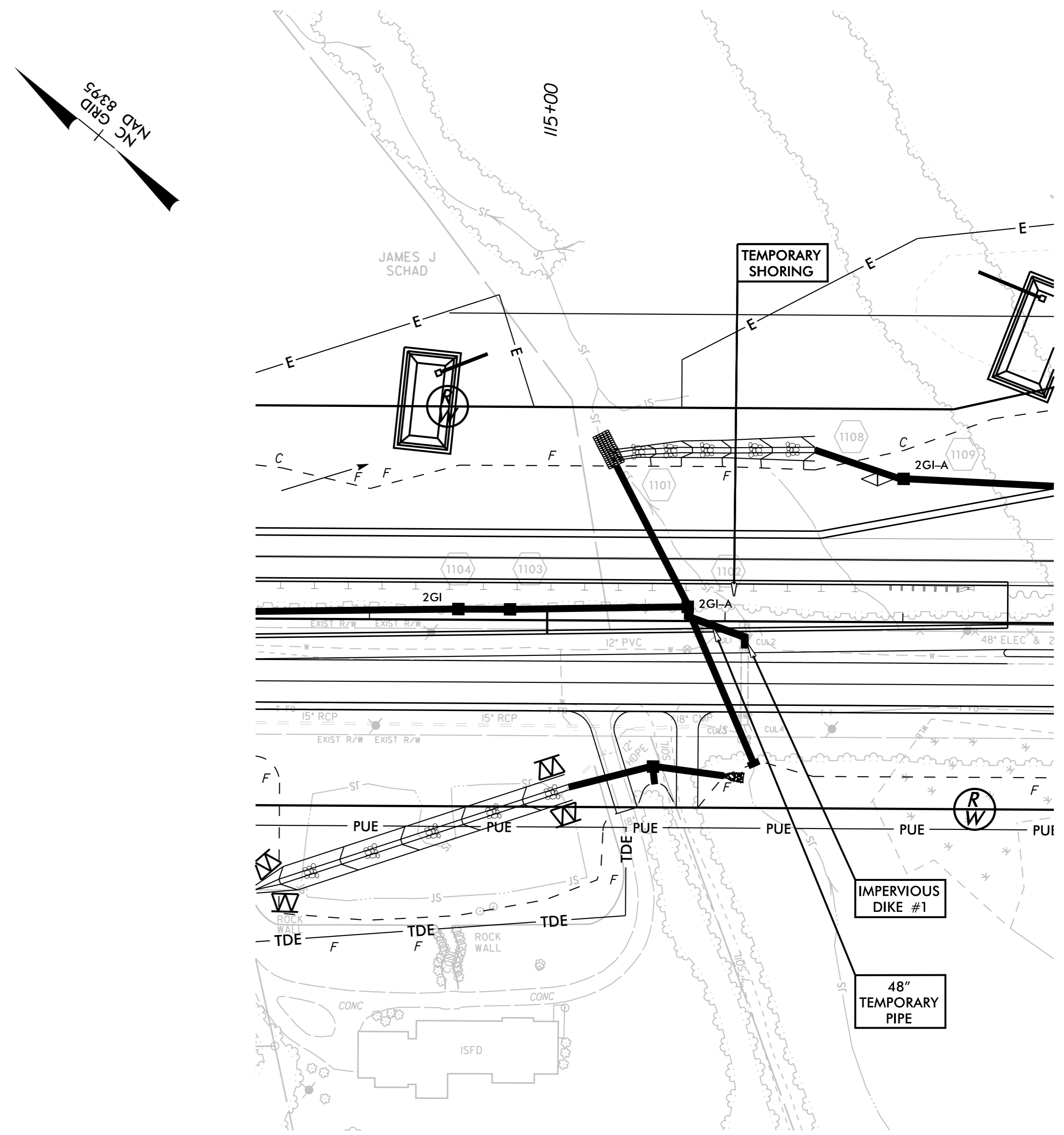
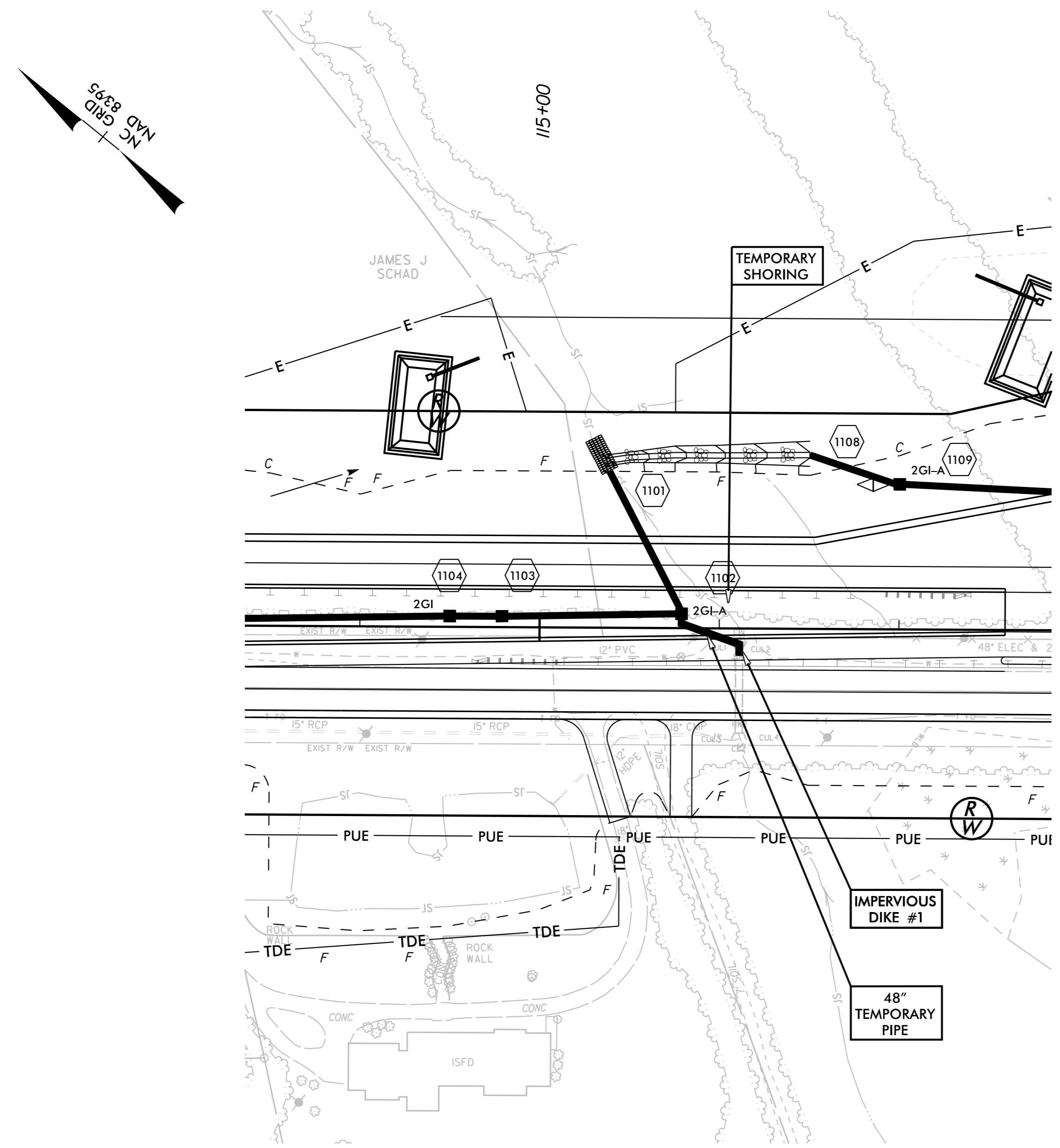
60" PIPE INSTALLATION SEQUENCE STA. 115+80 -L-

PHASE I

- 1.) UTILIZE SPECIAL STILLING BASINS DURING CONSTRUCTION TO DEWATER WORK SITE. (TYP.)
- 2.) CONSTRUCT PROPOSED 60" PIPE FROM STRUCTURE #1102 TO #1101, IMPERVIOUS DIKE #1, AND TEMPORARY PIPE FROM EXISTING CULVERT TO #1102.
- 3.) CONSTRUCT TEMPORARY SHORING AND WESTBOUND ROADWAY IMPROVEMENTS.
- 4.) REFERENCE SHEET TMP-11 FOR ADDITIONAL DETAIL REGARDING TRAFFIC MANAGEMENT AND SHORING.

PHASE II

- 1.) CONSTRUCT PROPOSED 60" PIPE FROM STRUCTURE #1106 TO #1102, REMOVE TEMPORARY DIKE #1 AND EX. CULVERT.
- 2.) CONSTRUCT EASTBOUND ROADWAY IMPROVEMENTS AND REMOVE TEMPORARY SHORING.
- 3.) REFERENCE SHEET TMP-36 FOR ADDITIONAL DETAIL REGARDING TRAFFIC MANAGEMENT AND SHORING.



1/31/2019

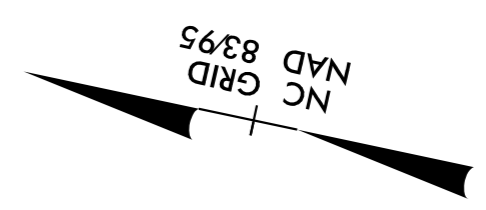
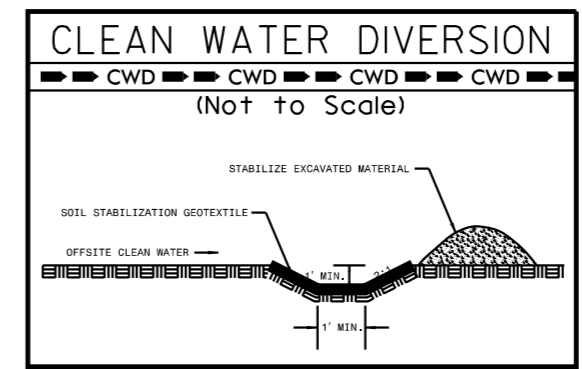
5/14/99

Kimley Horn
421 FAYETTEVILLE STREET, SUITE 600
RALEIGH, NC 27601

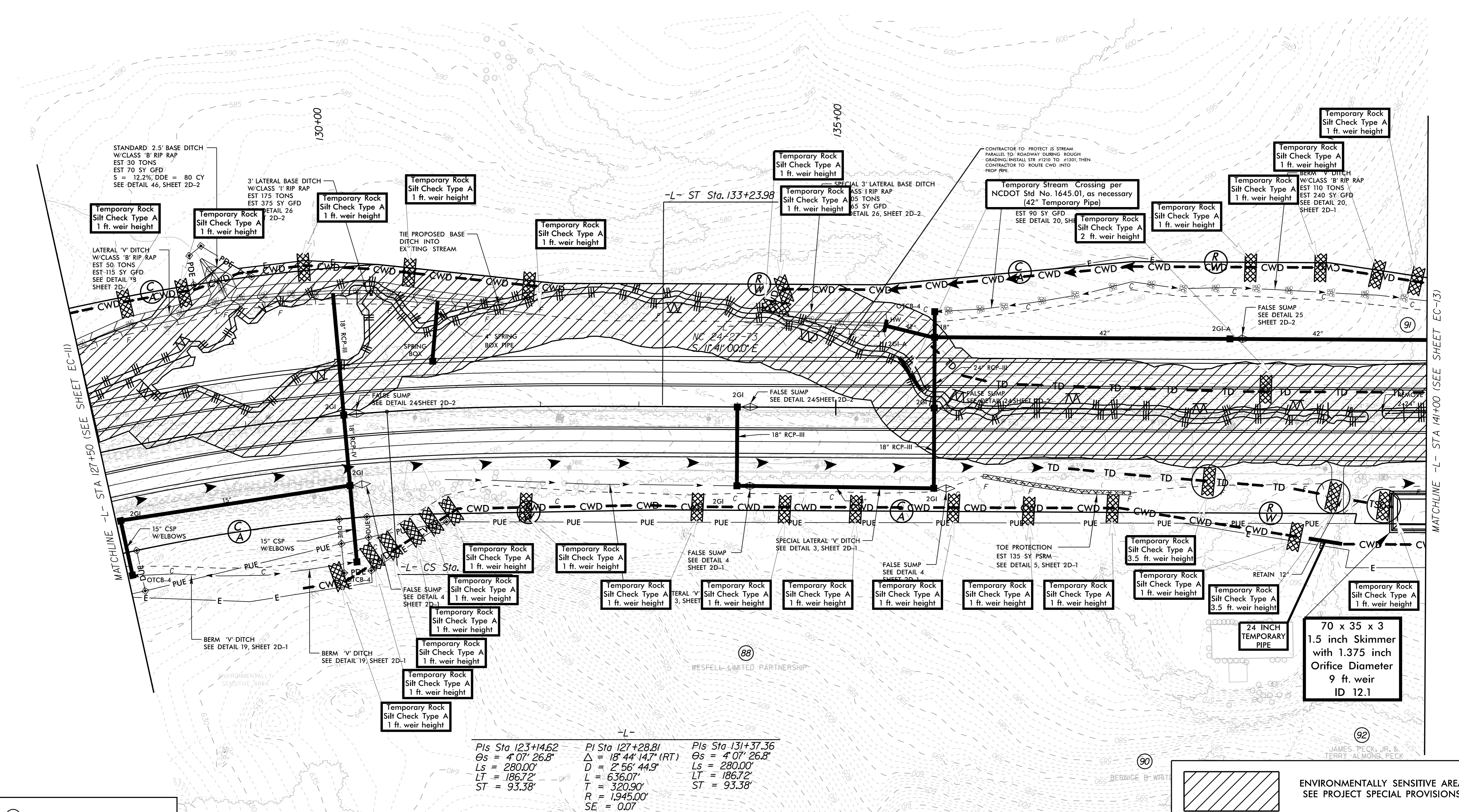
PROJECT REFERENCE NO. R-2530B
SHEET NO. EC-12/CONST.12

CLEARING AND GRUBBING
EROSION CONTROL FOR
CONSTRUCTION SHEET 12

NOTE:
PLACE TEMPORARY ROCK SEDIMENT DAMS TYPE - B
AND TEMPORARY ROCK SILT CHECKS TYPE - A AT
DRAINAGE OUTLETS.



WESFELL LIMITED PARTNERSHIP



STANDARD 2.5' BASE DITCH
W/CLASS 'B' RIP RAP
EST 30 TONS
EST 70 SY GFD
S = 12.2% DDE = 80 CY
SEE DETAIL 46, SHEET 2D-2

3' LATERAL BASE DITCH
W/CLASS 'B' RIP RAP
EST 175 TONS
EST 375 SY GFD
DETAIL 26
SHEET 2D-2

Temporary Rock
Silt Check Type A
1 ft. weir height

Temporary Rock
Silt Check Type A
1 ft. weir height

Temporary Rock
Silt Check Type A
1 ft. weir height

Temporary Stream Crossing per
NCDOT Std No. 1645.01, as necessary
(42" Temporary Pipe)

Temporary Rock
Silt Check Type A
2 ft. weir height

Temporary Rock
Silt Check Type A
1 ft. weir height

Temporary Rock
Silt Check Type A
1 ft. weir height

LATERAL 'V' DITCH
W/CLASS 'B' RIP RAP
EST 50 TONS
EST 115 SY GFD
SEE DETAIL 'S'
SHEET 2D-

Temporary Rock
Silt Check Type A
1 ft. weir height

Temporary Rock
Silt Check Type A
1 ft. weir height

Temporary Rock
Silt Check Type A
1 ft. weir height

Temporary Rock
Silt Check Type A
1 ft. weir height

Temporary Rock
Silt Check Type A
1 ft. weir height

CONTRACTOR TO PROTECT IS STREAM
PARALLEL TO ROADWAY DURING ROUGH
GRADING. INSTALL STR #1210 TO #1501, THEN
CONTRACTOR TO ROUTE CWD INTO
PROP PIPE.

Temporary Rock
Silt Check Type A
1 ft. weir height

Temporary Rock
Silt Check Type A
1 ft. weir height

Temporary Rock
Silt Check Type A
1 ft. weir height

15" CSP
W/ELBOWS

Temporary Rock
Silt Check Type A
1 ft. weir height

Temporary Rock
Silt Check Type A
1 ft. weir height

Temporary Rock
Silt Check Type A
1 ft. weir height

Temporary Rock
Silt Check Type A
1 ft. weir height

Temporary Rock
Silt Check Type A
1 ft. weir height

Temporary Rock
Silt Check Type A
2 ft. weir height

Temporary Rock
Silt Check Type A
1 ft. weir height

Temporary Rock
Silt Check Type A
1 ft. weir height

Temporary Rock
Silt Check Type A
1 ft. weir height

15" CSP
W/ELBOWS

Temporary Rock
Silt Check Type A
1 ft. weir height

Temporary Rock
Silt Check Type A
1 ft. weir height

Temporary Rock
Silt Check Type A
1 ft. weir height

Temporary Rock
Silt Check Type A
1 ft. weir height

Temporary Rock
Silt Check Type A
1 ft. weir height

Temporary Rock
Silt Check Type A
2 ft. weir height

Temporary Rock
Silt Check Type A
1 ft. weir height

Temporary Rock
Silt Check Type A
1 ft. weir height

Temporary Rock
Silt Check Type A
1 ft. weir height

15" CSP
W/ELBOWS

Temporary Rock
Silt Check Type A
1 ft. weir height

Temporary Rock
Silt Check Type A
1 ft. weir height

Temporary Rock
Silt Check Type A
1 ft. weir height

Temporary Rock
Silt Check Type A
1 ft. weir height

Temporary Rock
Silt Check Type A
1 ft. weir height

Temporary Rock
Silt Check Type A
2 ft. weir height

Temporary Rock
Silt Check Type A
1 ft. weir height

Temporary Rock
Silt Check Type A
1 ft. weir height

Temporary Rock
Silt Check Type A
1 ft. weir height

BERM 'V' DITCH
SEE DETAIL 19, SHEET 2D-1

Temporary Rock
Silt Check Type A
1 ft. weir height

Temporary Rock
Silt Check Type A
1 ft. weir height

Temporary Rock
Silt Check Type A
1 ft. weir height

Temporary Rock
Silt Check Type A
1 ft. weir height

Temporary Rock
Silt Check Type A
1 ft. weir height

Temporary Rock
Silt Check Type A
2 ft. weir height

Temporary Rock
Silt Check Type A
1 ft. weir height

Temporary Rock
Silt Check Type A
1 ft. weir height

Temporary Rock
Silt Check Type A
1 ft. weir height

BERM 'V' DITCH
SEE DETAIL 19, SHEET 2D-1

Temporary Rock
Silt Check Type A
1 ft. weir height

Temporary Rock
Silt Check Type A
1 ft. weir height

Temporary Rock
Silt Check Type A
1 ft. weir height

Temporary Rock
Silt Check Type A
1 ft. weir height

Temporary Rock
Silt Check Type A
1 ft. weir height

Temporary Rock
Silt Check Type A
2 ft. weir height

Temporary Rock
Silt Check Type A
1 ft. weir height

Temporary Rock
Silt Check Type A
1 ft. weir height

Temporary Rock
Silt Check Type A
1 ft. weir height

BERM 'V' DITCH
SEE DETAIL 19, SHEET 2D-1

Temporary Rock
Silt Check Type A
1 ft. weir height

Temporary Rock
Silt Check Type A
1 ft. weir height

Temporary Rock
Silt Check Type A
1 ft. weir height

Temporary Rock
Silt Check Type A
1 ft. weir height

Temporary Rock
Silt Check Type A
1 ft. weir height

Temporary Rock
Silt Check Type A
2 ft. weir height

Temporary Rock
Silt Check Type A
1 ft. weir height

Temporary Rock
Silt Check Type A
1 ft. weir height

Temporary Rock
Silt Check Type A
1 ft. weir height

JOHN CLIFTON WHITLEY
DB 356 PG 5

Pls Sta 123+14.62 Δs = 4' 07" 26.8" Ls = 280.00' LT = 186.72' ST = 93.38'	Pls Sta 127+28.81 Δ = 18' 44" 14.7" (RT) D = 2' 56" 44.9" L = 636.07' T = 320.90' R = 1,945.00' SE = 0.07	Pls Sta 131+37.36 Δs = 4' 07" 26.8" Ls = 280.00' LT = 186.72' ST = 93.38'
---	---	---

ENVIRONMENTALLY SENSITIVE AREA
SEE PROJECT SPECIAL PROVISIONS

SEE SHEET 38 FOR -L- PROFILE

11/1/2018

97 D & G PROPERTIES
DB 540 PG 878

99 STONY GAP PROPERTIES LLC
DB 1370 PG 1000
DB 187 PG 245

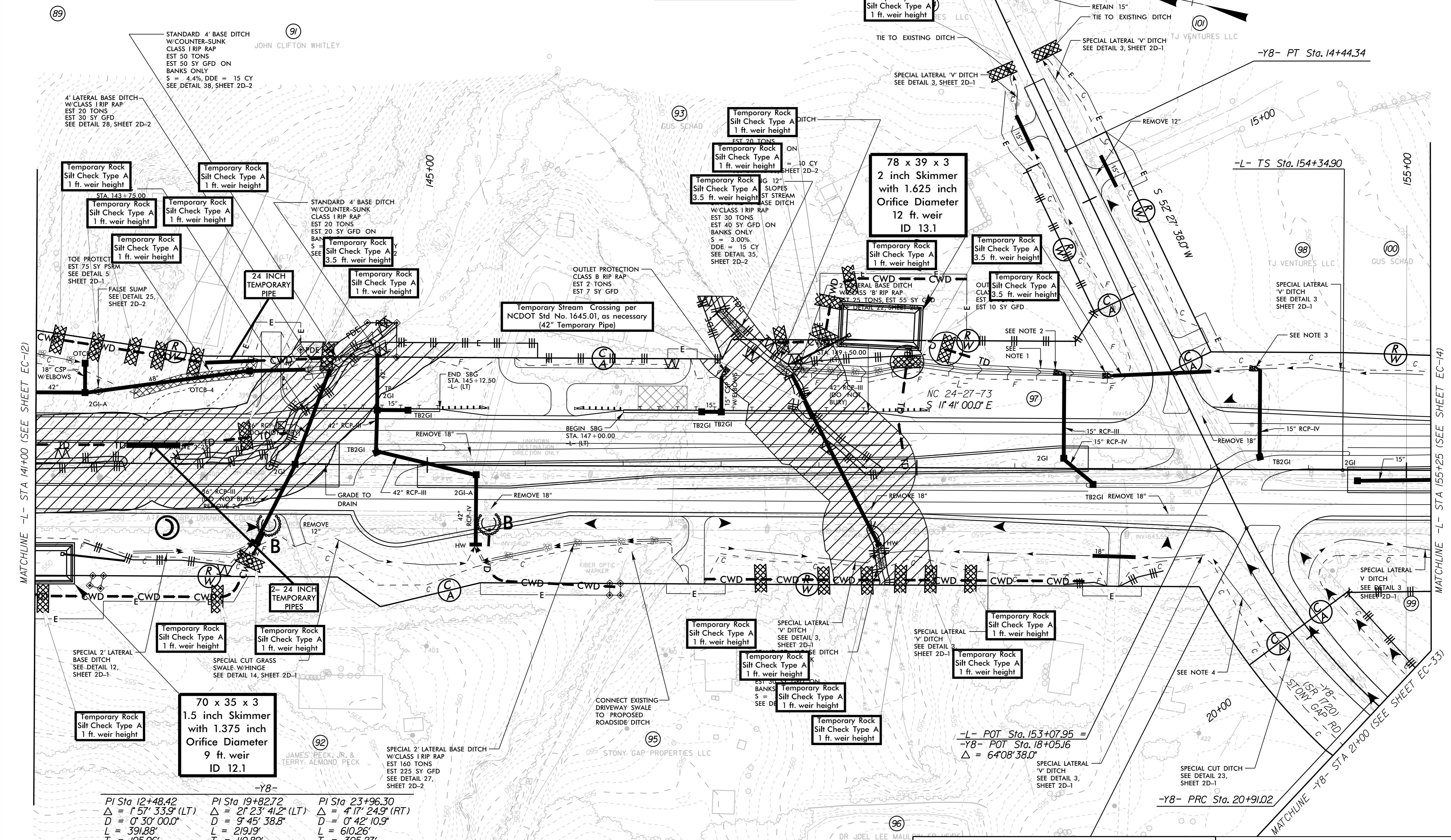
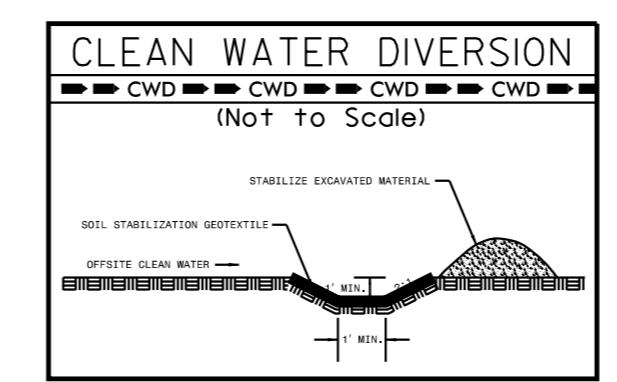
NOTE: PLACE TEMPORARY ROCK SEDIMENT DAMS TYPE - B AND TEMPORARY ROCK SILT CHECKS TYPE - A AT DRAINAGE OUTLETS.

D & G PROPERTIES

Kimley Horn
421 FAYETTEVILLE STREET, SUITE 600
RALEIGH, NC 27601

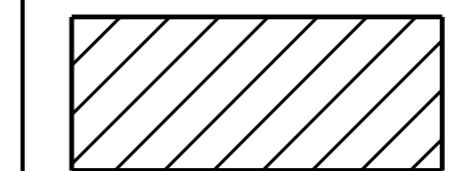
PROJECT REFERENCE NO. R-2530B
SHEET NO. EC-13/CONST.13

CLEARING AND GRUBBING
EROSION CONTROL FOR
CONSTRUCTION SHEET 13



-Y8-

PI Sta 12+48.42 Δ = 1' 57" 33.9" (LT) D = 0' 30" 00.0" L = 391.88' T = 195.96' R = 11,459.16' SE = NC RO = NONE	PI Sta 19+82.72 Δ = 2' 23" 41.2" (LT) D = 9' 45" 38.8" L = 219.19' T = 110.89' R = 587.00' SE = 0.04 RO = 96' DS = 45 MPH	PI Sta 23+96.30 Δ = 4' 17" 24.9" (RT) D = 0' 42" 10.9" L = 610.26' T = 305.27' R = 8,150.00' SE = NC RO = NONE
--	---	---



ENVIRONMENTALLY SENSITIVE AREA
SEE PROJECT SPECIAL PROVISIONS

SEE SHEET 2B-2 FOR INTERSECTION DETAILS
SEE SHEET 38 FOR -L- PROFILE
SEE SHEET 52 FOR -Y8- PROFILE
SEE SHEET 57 FOR -DRW8- PROFILE

11/1/2018

5/14/99

Kimley Horn
 421 FAYETTEVILLE STREET, SUITE 600
 RALEIGH, NC 27601

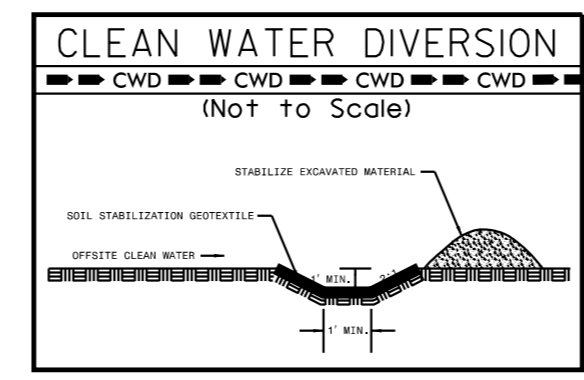
CLEARING AND GRUBBING
 EROSION CONTROL FOR
 CONSTRUCTION SHEET 14

NOTE:
 PLACE TEMPORARY ROCK SEDIMENT DAMS TYPE - B
 AND TEMPORARY ROCK SILT CHECKS TYPE - A AT
 DRAINAGE OUTLETS.

-DRW9-
 PI Sta 10+48.93
 $\Delta = 13^{\circ} 55' 05.9"$ (RT)
 $D = 22^{\circ} 55' 05.9"$
 $L = 607.3'$
 $T = 30.52'$
 $R = 250.00'$

-L-
 PI Sta 155+94.92
 $\theta_s = 2^{\circ} 57' 48.9"$
 $L_s = 240.00'$
 $LT = 160.02'$
 $ST = 80.02'$

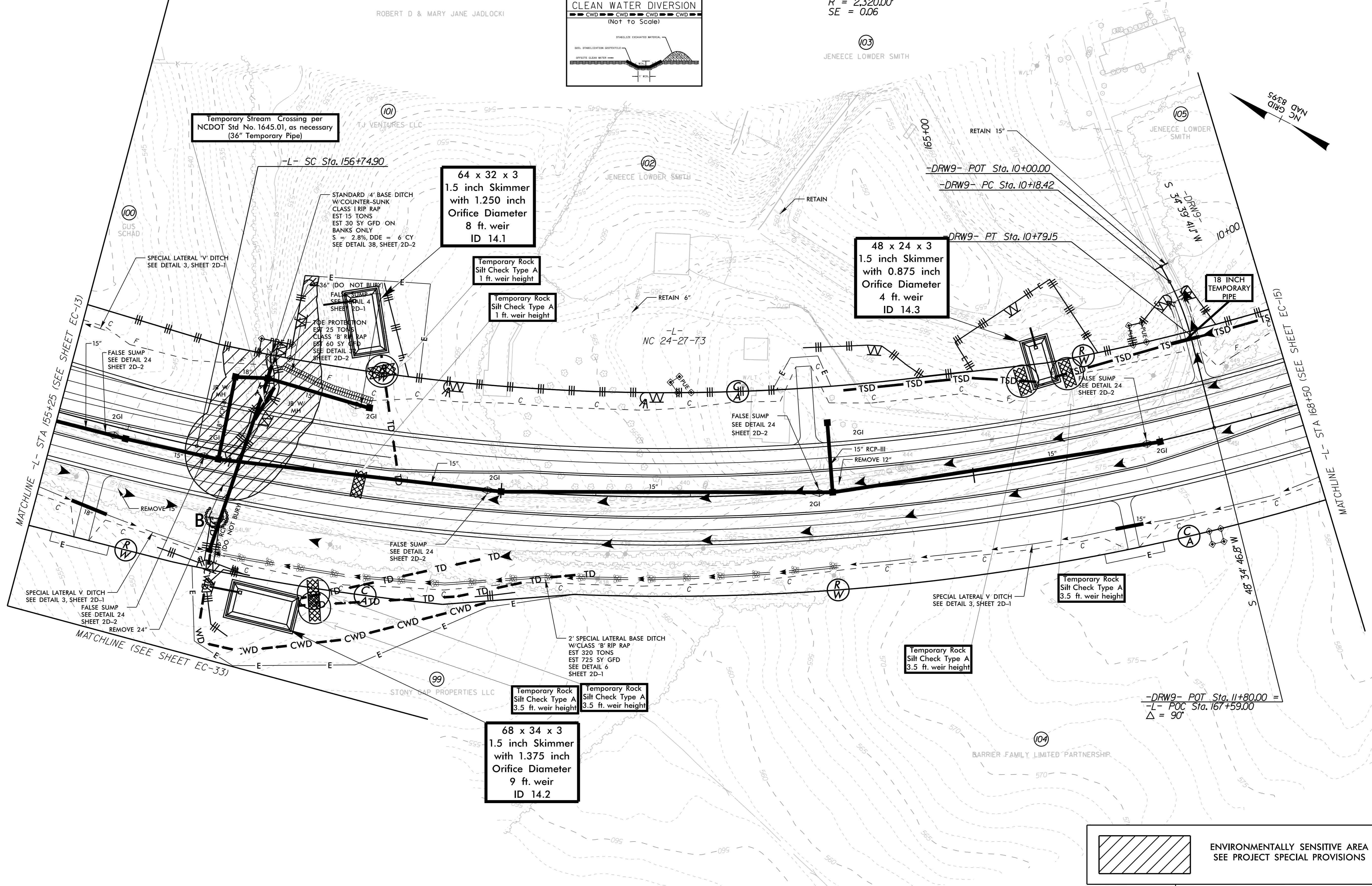
PI Sta 163+10.12
 $\Delta = 30^{\circ} 37' 29.5"$ (LT)
 $D = 2^{\circ} 28' 10.7"$
 $L = 1,240.05'$
 $T = 635.22'$
 $R = 2,320.00'$
 $SE = 0.06$



ROBERT D & MARY JANE JADLOCKI

(03)
 JENECE LOWDER SMITH

(05)
 JENECE LOWDER SMITH



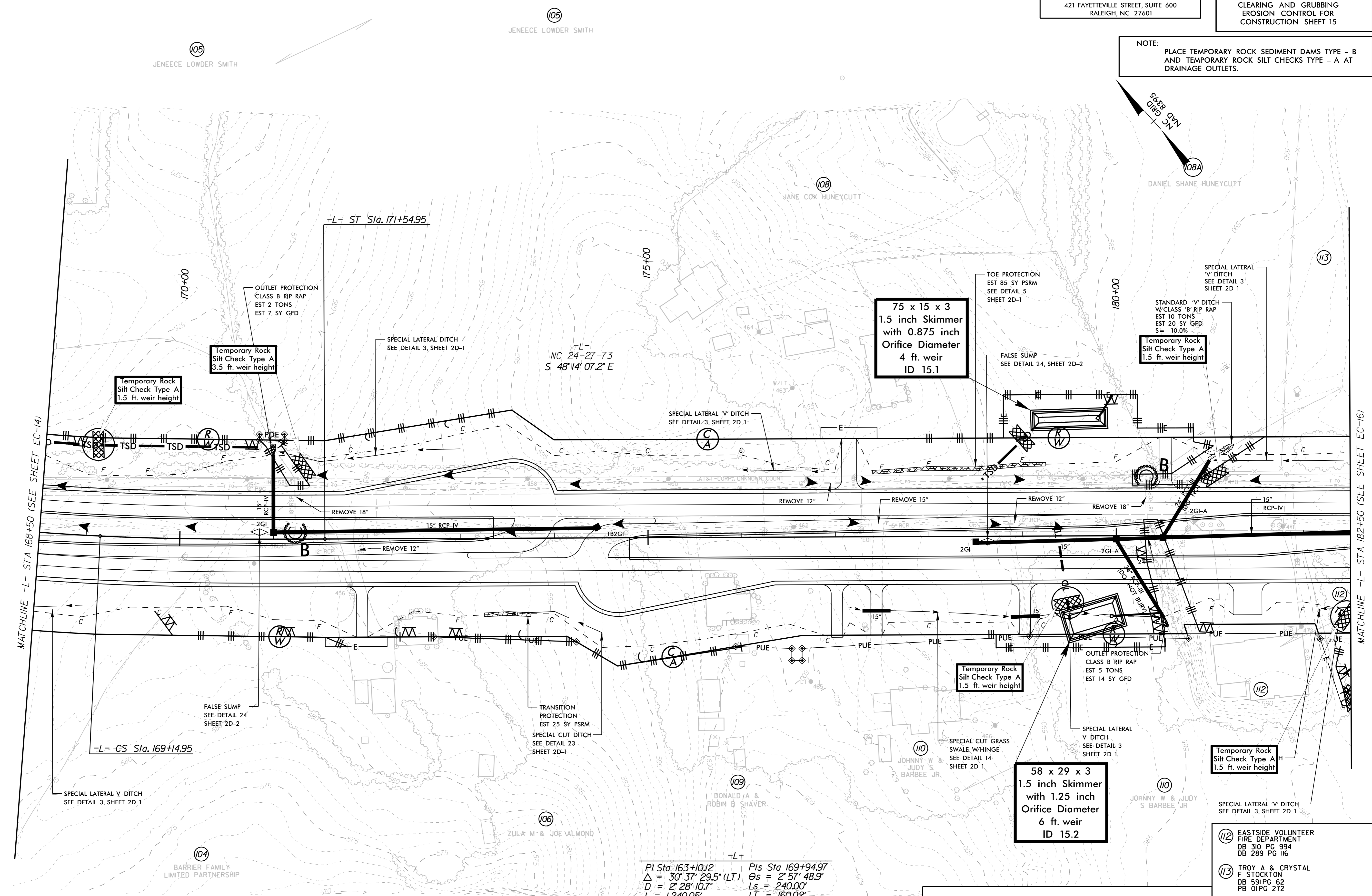
ENVIRONMENTALLY SENSITIVE AREA
 SEE PROJECT SPECIAL PROVISIONS

SEE SHEET 39 FOR -L- PROFILE
 SEE SHEET 57 FOR -DRW9- PROFILE

11/1/2018

5/14/99

NOTE: PLACE TEMPORARY ROCK SEDIMENT DAMS TYPE - B AND TEMPORARY ROCK SILT CHECKS TYPE - A AT DRAINAGE OUTLETS.



$PI\ Sta\ 163+10.12$
 $\Delta = 30' 37" 29.5" (LT)$
 $D = 2' 28' 10.7"$
 $L = 1,240.05'$
 $T = 635.22'$
 $R = 2,320.00'$
 $SE = 0.06$

$PIs\ Sta\ 169+94.97$
 $\Theta_s = 2' 57' 48.9"$
 $L_s = 240.00'$
 $LT = 160.02'$
 $ST = 80.02'$

ENVIRONMENTALLY SENSITIVE AREA
 SEE PROJECT SPECIAL PROVISIONS

- (112) EASTSIDE VOLUNTEER FIRE DEPARTMENT
DB 310 PG 994
DB 289 PG 116
- (113) TROY A & CRYSTAL F STOCKTON
DB 591 PG 62
PB 01 PG 272
- (114) ZULA ALMOND
DB 514 PG 997
PB 01 PG 272

SEE SHEET 39 FOR -L- PROFILE

MATCHLINE -L- STA 169+50 (SEE SHEET EC-14)

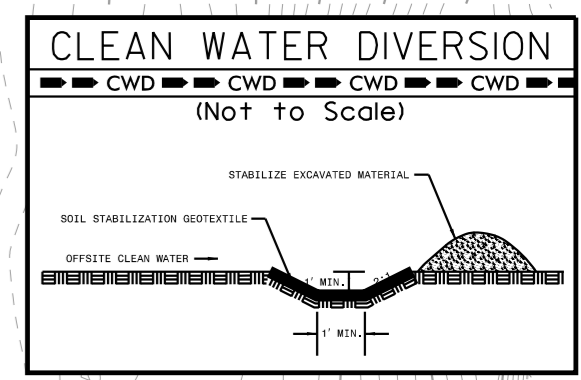
MATCHLINE -L- STA 182+50 (SEE SHEET EC-16)

11/1/2018

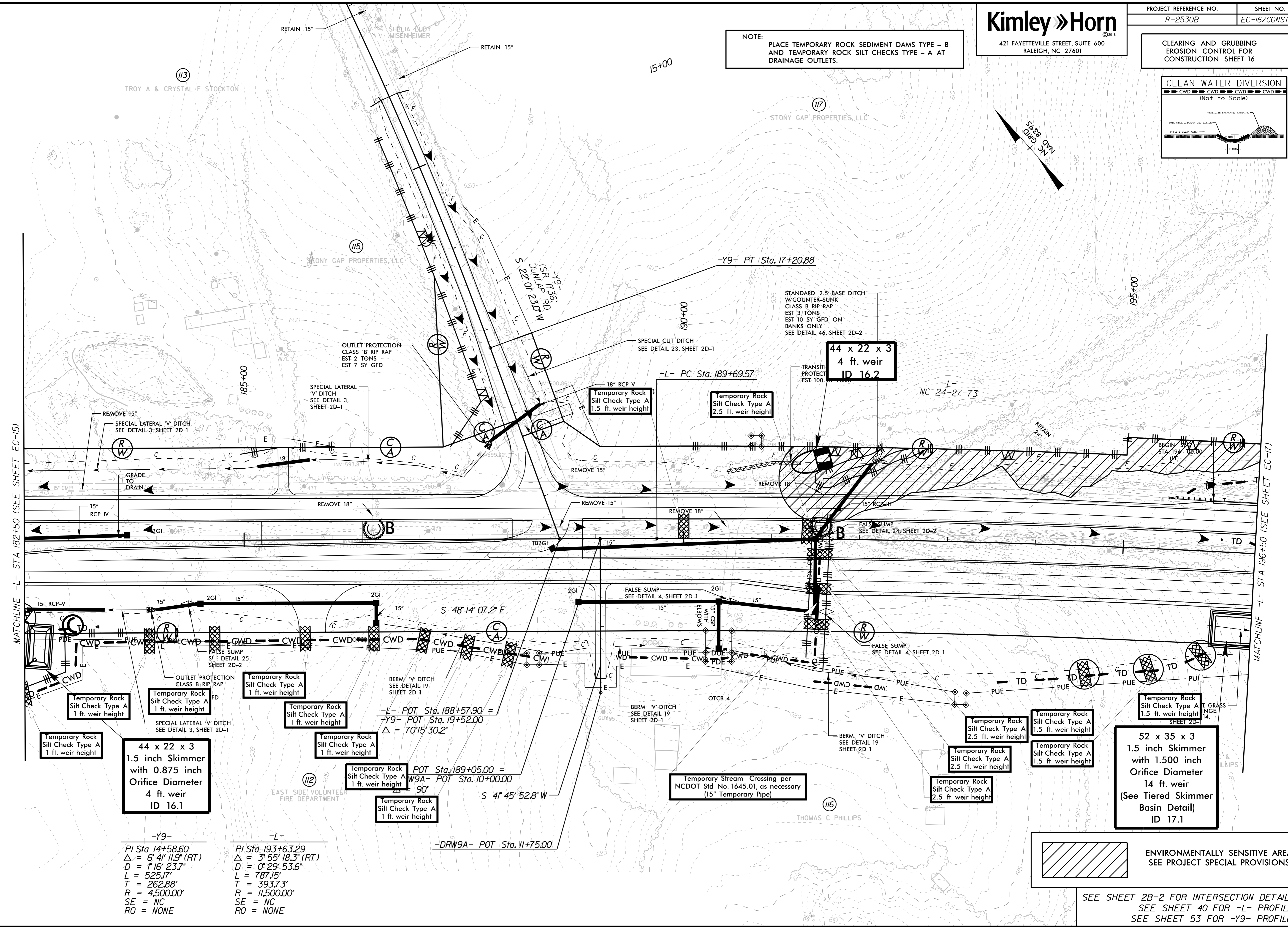
5/14/99

Kimley Horn
 421 FAYETTEVILLE STREET, SUITE 600
 RALEIGH, NC 27601

CLEARING AND GRUBBING
 EROSION CONTROL FOR
 CONSTRUCTION SHEET 16



NOTE:
 PLACE TEMPORARY ROCK SEDIMENT DAMS TYPE - B
 AND TEMPORARY ROCK SILT CHECKS TYPE - A AT
 DRAINAGE OUTLETS.



MATCHLINE -L- STA 182+50 (SEE SHEET EC-15)

MATCHLINE -L- STA 196+50 (SEE SHEET EC-17)

44 x 22 x 3
 1.5 inch Skimmer
 with 0.875 inch
 Orifice Diameter
 4 ft. weir
 ID 16.1

52 x 35 x 3
 1.5 inch Skimmer
 with 1.500 inch
 Orifice Diameter
 14 ft. weir
 (See Tiered Skimmer
 Basin Detail)
 ID 17.1

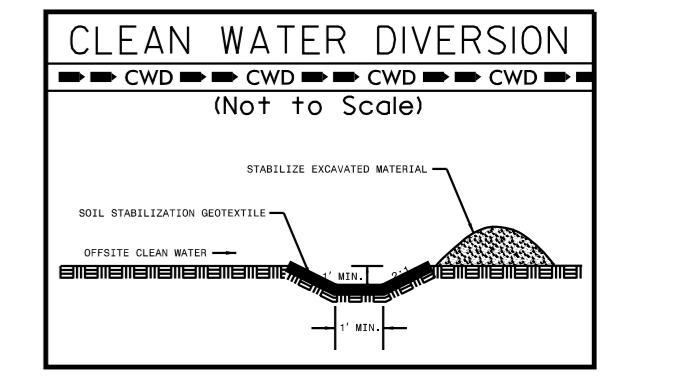
-Y9-	-L-
PI Sta 14+58.60	PI Sta 193+63.29
Δ = 6° 41' 11.9" (RT)	Δ = 3° 55' 18.3" (RT)
D = 1' 16" 23.7"	D = 0' 29" 53.6"
L = 525.17'	L = 787.15'
T = 262.88'	T = 393.73'
R = 4,500.00'	R = 11,500.00'
SE = NC	SE = NC
RO = NONE	RO = NONE

ENVIRONMENTALLY SENSITIVE AREA
 SEE PROJECT SPECIAL PROVISIONS

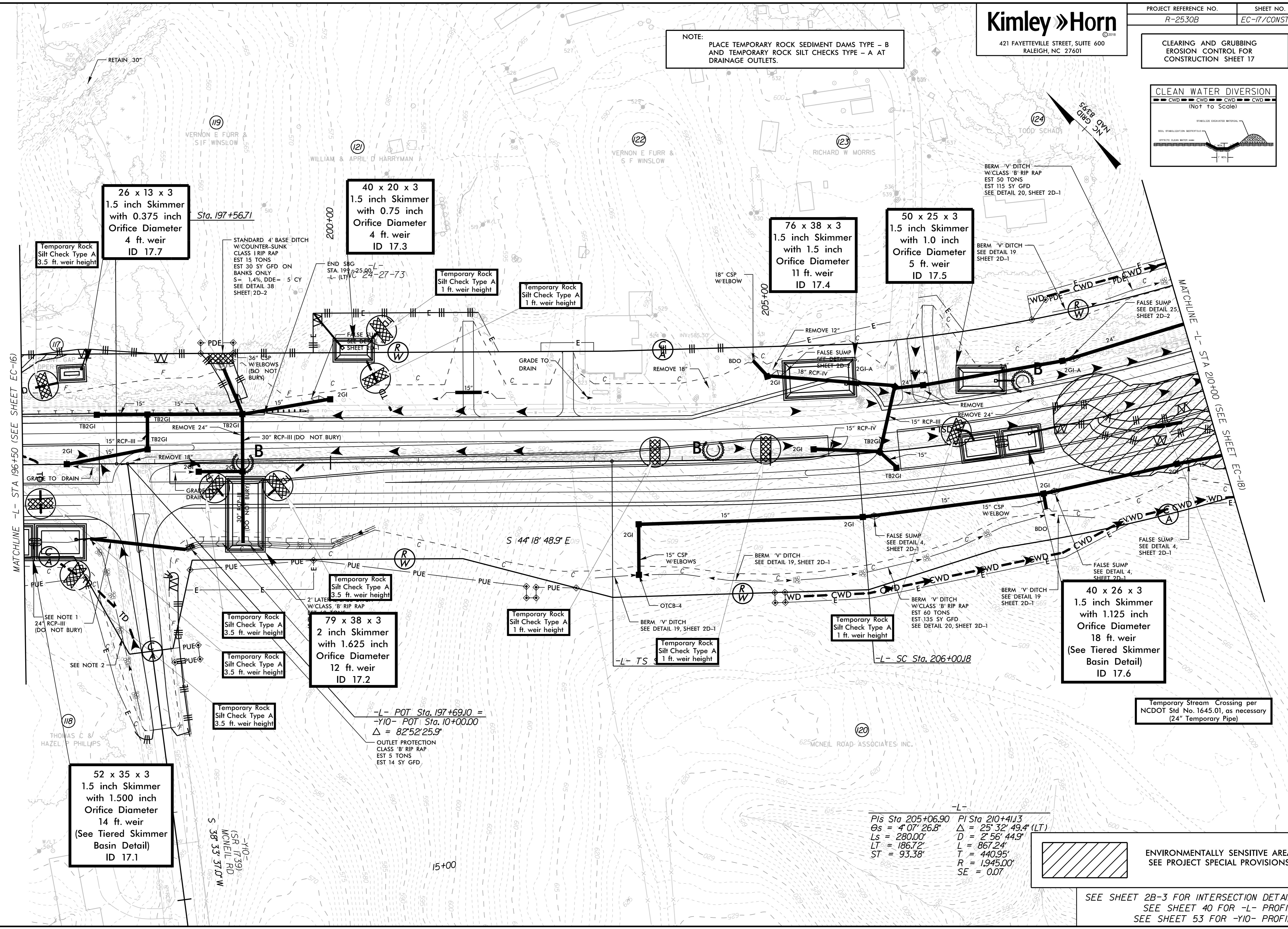
SEE SHEET 2B-2 FOR INTERSECTION DETAILS
 SEE SHEET 40 FOR -L- PROFILE
 SEE SHEET 53 FOR -Y9- PROFILE

11/1/2018

CLEARING AND GRUBBING
EROSION CONTROL FOR
CONSTRUCTION SHEET 17



NOTE:
PLACE TEMPORARY ROCK SEDIMENT DAMS TYPE - B
AND TEMPORARY ROCK SILT CHECKS TYPE - A AT
DRAINAGE OUTLETS.



26 x 13 x 3
1.5 inch Skimmer
with 0.375 inch
Orifice Diameter
4 ft. weir
ID 17.7

40 x 20 x 3
1.5 inch Skimmer
with 0.75 inch
Orifice Diameter
4 ft. weir
ID 17.3

76 x 38 x 3
1.5 inch Skimmer
with 1.5 inch
Orifice Diameter
11 ft. weir
ID 17.4

50 x 25 x 3
1.5 inch Skimmer
with 1.0 inch
Orifice Diameter
5 ft. weir
ID 17.5

79 x 38 x 3
2 inch Skimmer
with 1.625 inch
Orifice Diameter
12 ft. weir
ID 17.2

40 x 26 x 3
1.5 inch Skimmer
with 1.125 inch
Orifice Diameter
18 ft. weir
(See Tiered Skimmer
Basin Detail)
ID 17.6

52 x 35 x 3
1.5 inch Skimmer
with 1.500 inch
Orifice Diameter
14 ft. weir
(See Tiered Skimmer
Basin Detail)
ID 17.1

Temporary Stream Crossing per
NCDOT Std. No. 1645.01, as necessary
(24" Temporary Pipe)

Pls Sta 205+06.90 PI Sta 210+41.13
 $\theta_s = 4^{\circ}07'26.8''$ $\Delta = 25^{\circ}32'49.4''$ (LT)
 $L_s = 280.00'$ $D = 2^{\circ}56'44.9''$
 $LT = 186.72'$ $L = 867.24'$
 $ST = 93.38'$ $T = 440.95'$
 $R = 1,945.00'$
 $SE = 0.07$

ENVIRONMENTALLY SENSITIVE AREA
SEE PROJECT SPECIAL PROVISIONS

SEE SHEET 2B-3 FOR INTERSECTION DETAILS
SEE SHEET 40 FOR -L- PROFILE
SEE SHEET 53 FOR -Y10- PROFILE

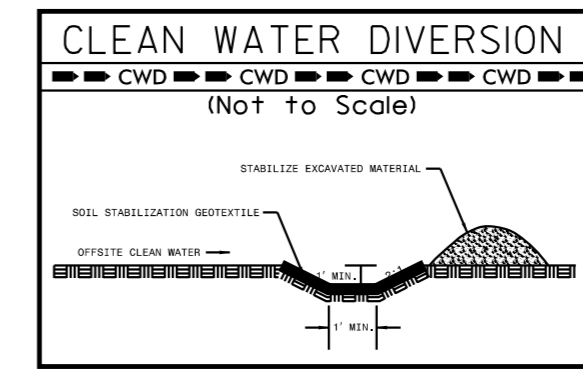
5/14/99

11/1/2018

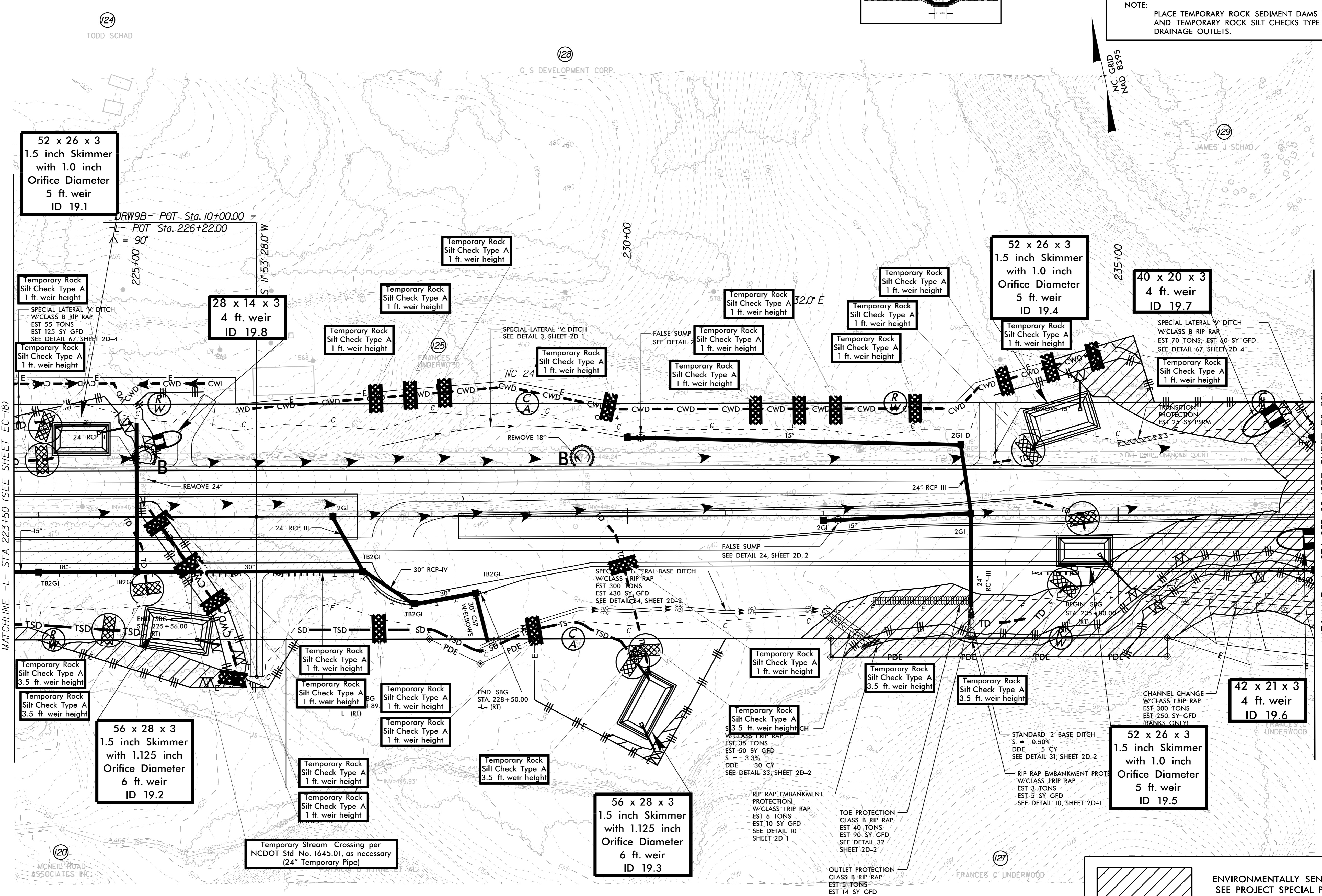
5/14/99

Kimley Horn
 421 FAYETTEVILLE STREET, SUITE 600
 RALEIGH, NC 27601

CLEARING AND GRUBBING
 EROSION CONTROL FOR
 CONSTRUCTION SHEET 19



NOTE:
 PLACE TEMPORARY ROCK SEDIMENT DAMS TYPE - B
 AND TEMPORARY ROCK SILT CHECKS TYPE - A AT
 DRAINAGE OUTLETS.



52 x 26 x 3
 1.5 inch Skimmer
 with 1.0 inch
 Orifice Diameter
 5 ft. weir
 ID 19.1

28 x 14 x 3
 4 ft. weir
 ID 19.8

52 x 26 x 3
 1.5 inch Skimmer
 with 1.0 inch
 Orifice Diameter
 5 ft. weir
 ID 19.4

40 x 20 x 3
 4 ft. weir
 ID 19.7

56 x 28 x 3
 1.5 inch Skimmer
 with 1.125 inch
 Orifice Diameter
 6 ft. weir
 ID 19.2

56 x 28 x 3
 1.5 inch Skimmer
 with 1.125 inch
 Orifice Diameter
 6 ft. weir
 ID 19.3

52 x 26 x 3
 1.5 inch Skimmer
 with 1.0 inch
 Orifice Diameter
 5 ft. weir
 ID 19.5

42 x 21 x 3
 4 ft. weir
 ID 19.6

ENVIRONMENTALLY SENSITIVE AREA
 SEE PROJECT SPECIAL PROVISIONS

SEE SHEET 41 FOR -L- PROFILE
 SEE SHEET 57 FOR -DRW9A- PROFILE

MATCHLINE -L- STA 223+50 (SEE SHEET EC-18)

MATCHLINE -L- STA 237+00 (SEE SHEET EC-20)

MCNEIL ROAD
 ASSOCIATES, INC.

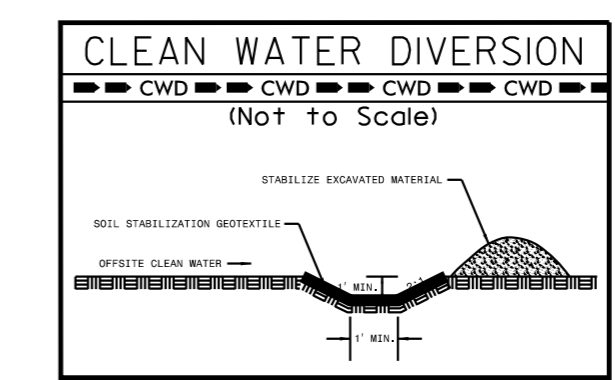
FRANCES C UNDERWOOD

11/1/2018

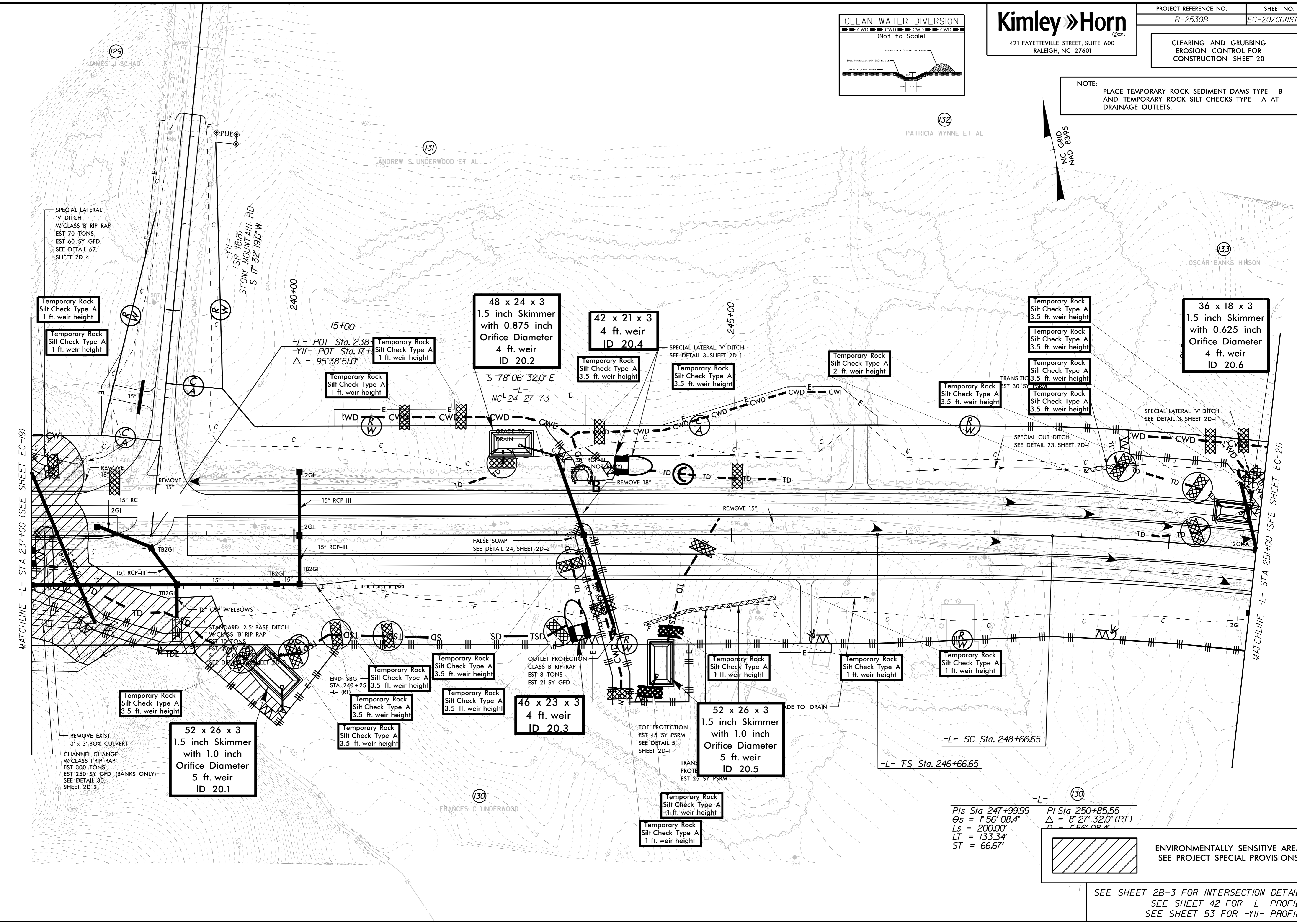
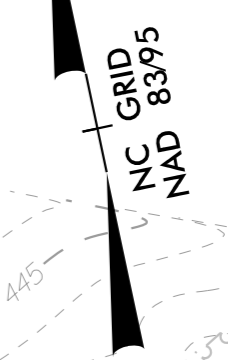
5/14/99

Kimley Horn
 421 FAYETTEVILLE STREET, SUITE 600
 RALEIGH, NC 27601

CLEARING AND GRUBBING
 EROSION CONTROL FOR
 CONSTRUCTION SHEET 20



NOTE:
 PLACE TEMPORARY ROCK SEDIMENT DAMS TYPE - B
 AND TEMPORARY ROCK SILT CHECKS TYPE - A AT
 DRAINAGE OUTLETS.



MATCHLINE -L- STA 237+00 (SEE SHEET EC-19)

MATCHLINE -L- STA 251+00 (SEE SHEET EC-21)

11/1/2018

-L- SC Sta. 248+66.65
 -L- TS Sta. 246+66.65
 -L- PIs Sta 247+99.99
 $\theta_s = 1^{\circ}56'08.4''$
 $L_s = 200.00'$
 $LT = 133.34'$
 $ST = 66.67'$
 -L- PI Sta 250+85.55
 $\Delta = 8^{\circ}27'32.0'' (RT)$
 $D = 1561.08'$

ENVIRONMENTALLY SENSITIVE AREA
 SEE PROJECT SPECIAL PROVISIONS

SEE SHEET 2B-3 FOR INTERSECTION DETAILS
 SEE SHEET 42 FOR -L- PROFILE
 SEE SHEET 53 FOR -YII- PROFILE

PROJECT REFERENCE NO. R-2530B	SHEET NO. EC-20A/CONST.20
ROADWAY DESIGN ENGINEER	HYDRAULICS ENGINEER

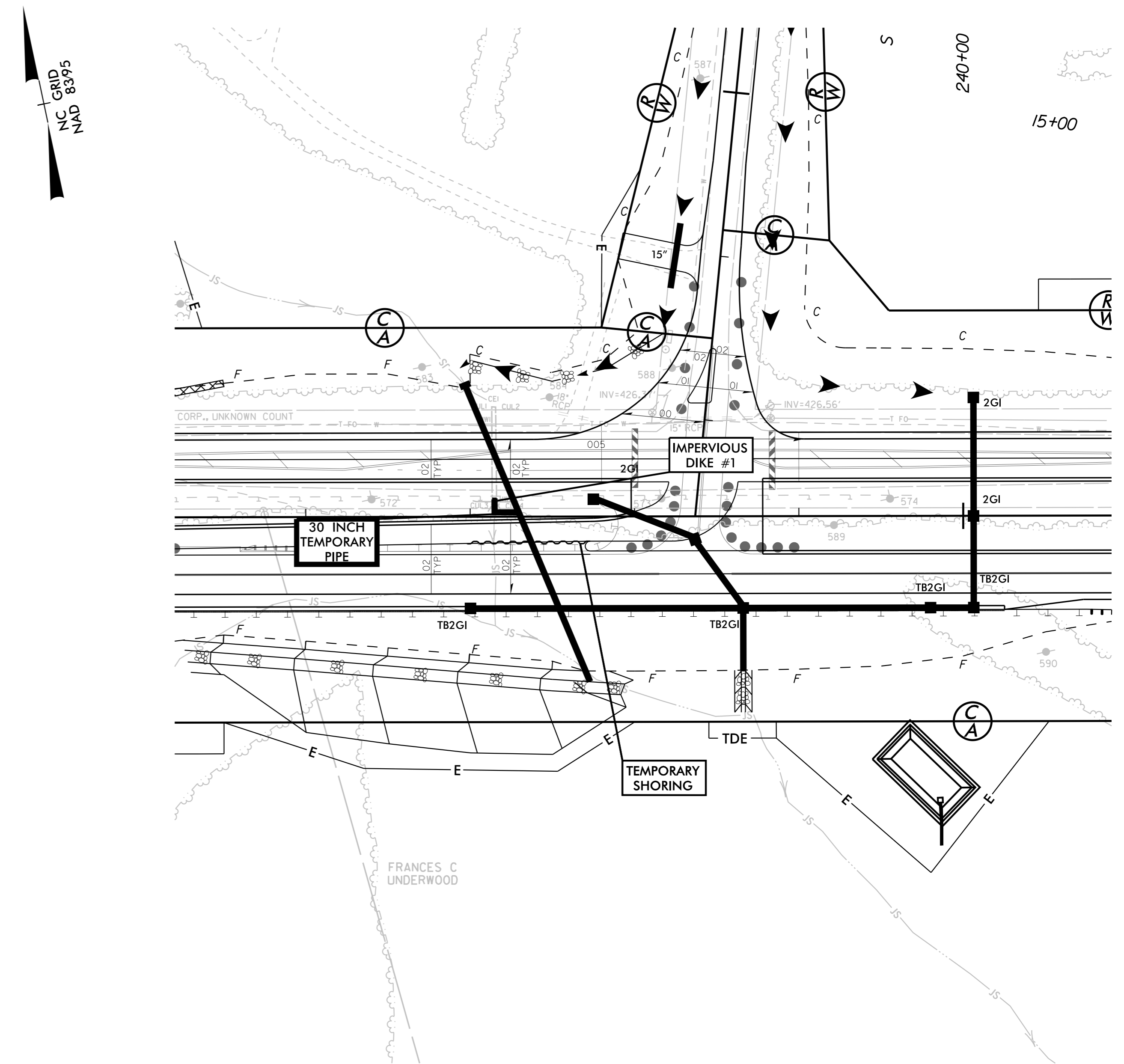
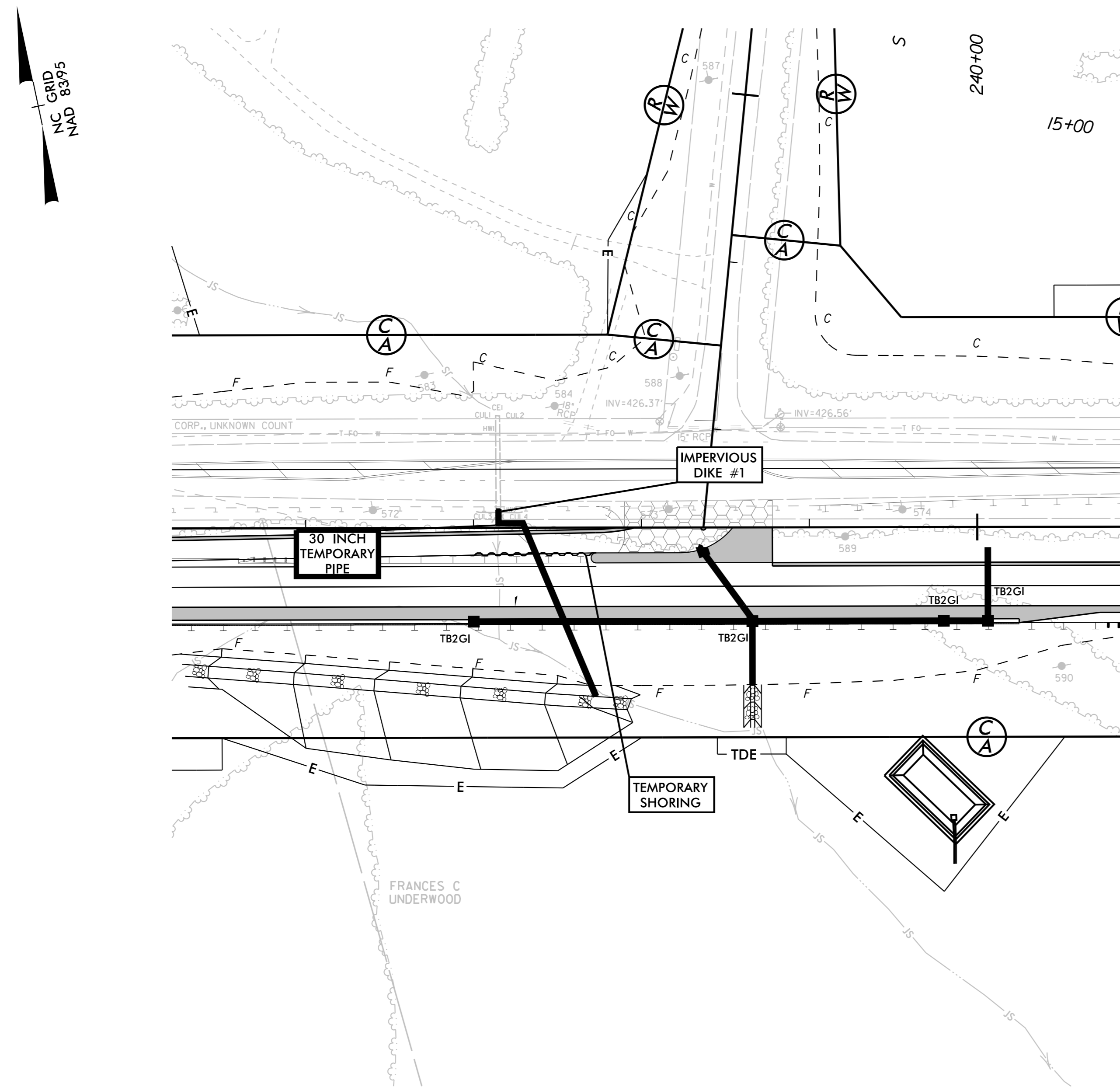
66" PIPE INSTALLATION SEQUENCE STA. 237+30 -L-

PHASE I

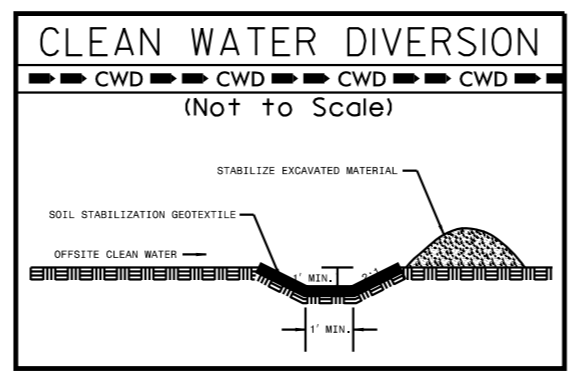
- 1.) UTILIZE SPECIAL STILLING BASINS DURING CONSTRUCTION TO DEWATER WORK SITE. (TYP.)
- 2.) CONSTRUCT APPROX. 108' OF THE PROPOSED 66" PIPE UPSTREAM FROM STRUCTURE #2001, IMPERVIOUS DIKE #1, AND TEMPORARY PIPE FROM EXISTING CULVERT TO UPSTREAM END OF NEW 66" PIPE.
- 3.) CONSTRUCT TEMPORARY SHORING AS NECESSARY AND EASTBOUND ROADWAY IMPROVEMENTS.
- 4.) REFERENCE SHEET TMP-20 FOR ADDITIONAL DETAIL REGARDING TRAFFIC MANAGEMENT.

PHASE II

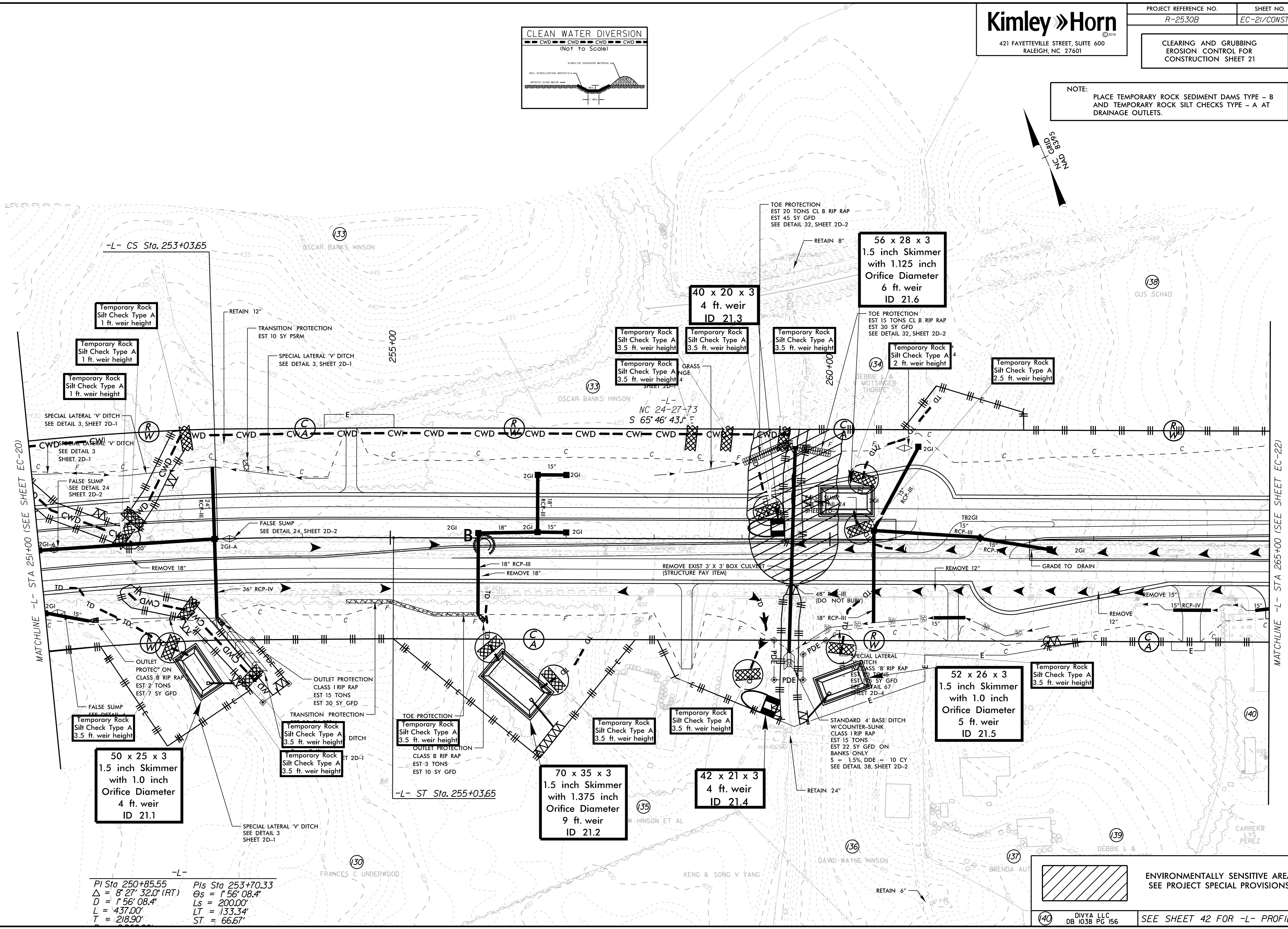
- 1.) CONSTRUCT THE PROPOSED 66" PIPE UPSTREAM FROM PHASE 1 CONSTRUCTION LIMITS.
- 2.) REMOVE EXISTING CULVERT AND TEMPORARY PIPE.
- 3.) CONSTRUCT TEMPORARY SHORING AS NECESSARY AND WESTBOUND ROADWAY IMPROVEMENTS.
- 4.) REFERENCE SHEET TMP-59 FOR ADDITIONAL DETAIL REGARDING TRAFFIC MANAGEMENT.



5/14/99



NOTE: PLACE TEMPORARY ROCK SEDIMENT DAMS TYPE - B AND TEMPORARY ROCK SILT CHECKS TYPE - A AT DRAINAGE OUTLETS.



-L-
 PI Sta 250+85.55 PIs Sta 253+70.33
 $\Delta = 8' 27" 32.0' (RT)$ $\Theta_s = 1' 56" 08.4'$
 $D = 1' 56" 08.4'$ $L_s = 200.00'$
 $L = 437.00'$ $LT = 133.34'$
 $T = 218.90'$ $ST = 66.67'$

ENVIRONMENTALLY SENSITIVE AREA
 SEE PROJECT SPECIAL PROVISIONS

140 DIVYA LLC
 DB 1038 PG 156

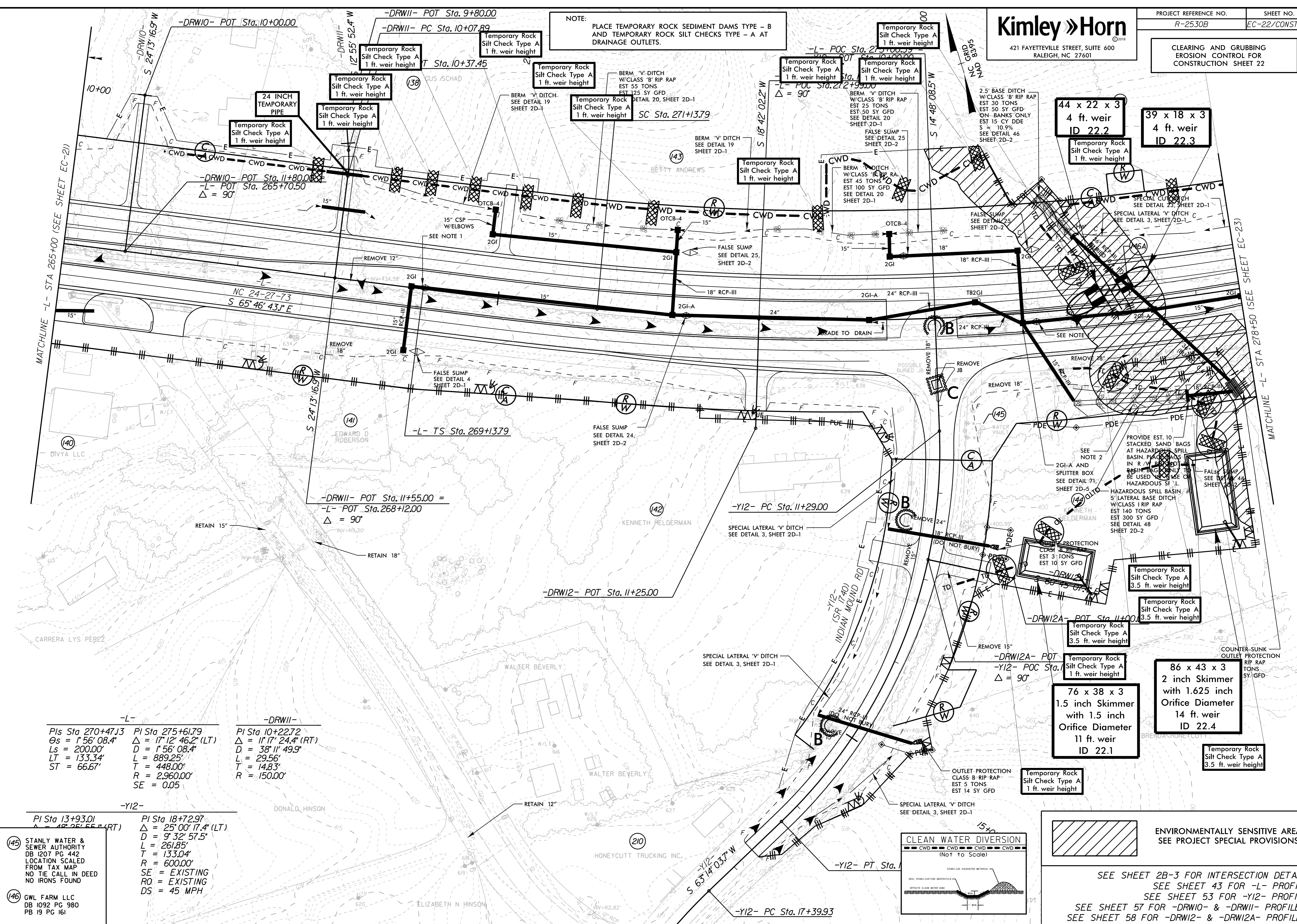
SEE SHEET 42 FOR -L- PROFILE

11/1/2018

5/14/99

CLEARING AND GRUBBING
 EROSION CONTROL FOR
 CONSTRUCTION SHEET 22

NOTE:
 PLACE TEMPORARY ROCK SEDIMENT DAMS TYPE - B
 AND TEMPORARY ROCK SILT CHECKS TYPE - A AT
 DRAINAGE OUTLETS.

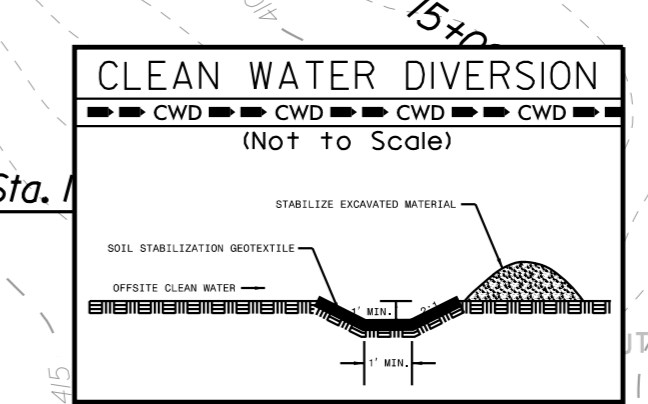


-L-		-DRWII-	
PIs Sta 270+47.13	PI Sta 275+61.79	PI Sta 10+22.72	
Δs = 1° 56' 08.4"	Δ = 17° 12' 46.2" (LT)	Δ = 11° 17' 24.4" (RT)	
Ls = 200.00'	D = 1° 56' 08.4"	D = 38° 11' 49.9"	
LT = 133.34'	L = 889.25'	L = 29.56'	
ST = 66.67'	T = 448.00'	T = 14.83'	
	R = 2,960.00'	R = 150.00'	
	SE = 0.05		

-Y12-
 PI Sta 13+93.01
 Δ = 48° 26' 55" (RT)

STANLY WATER & SEWER AUTHORITY
 DB 1207 PG 442
 LOCATION SCALED FROM TAX MAP
 NO THE CALL IN DEED NO IRONS FOUND

GWL FARM LLC
 DB 1092 PG 980
 PB 19 PG 161

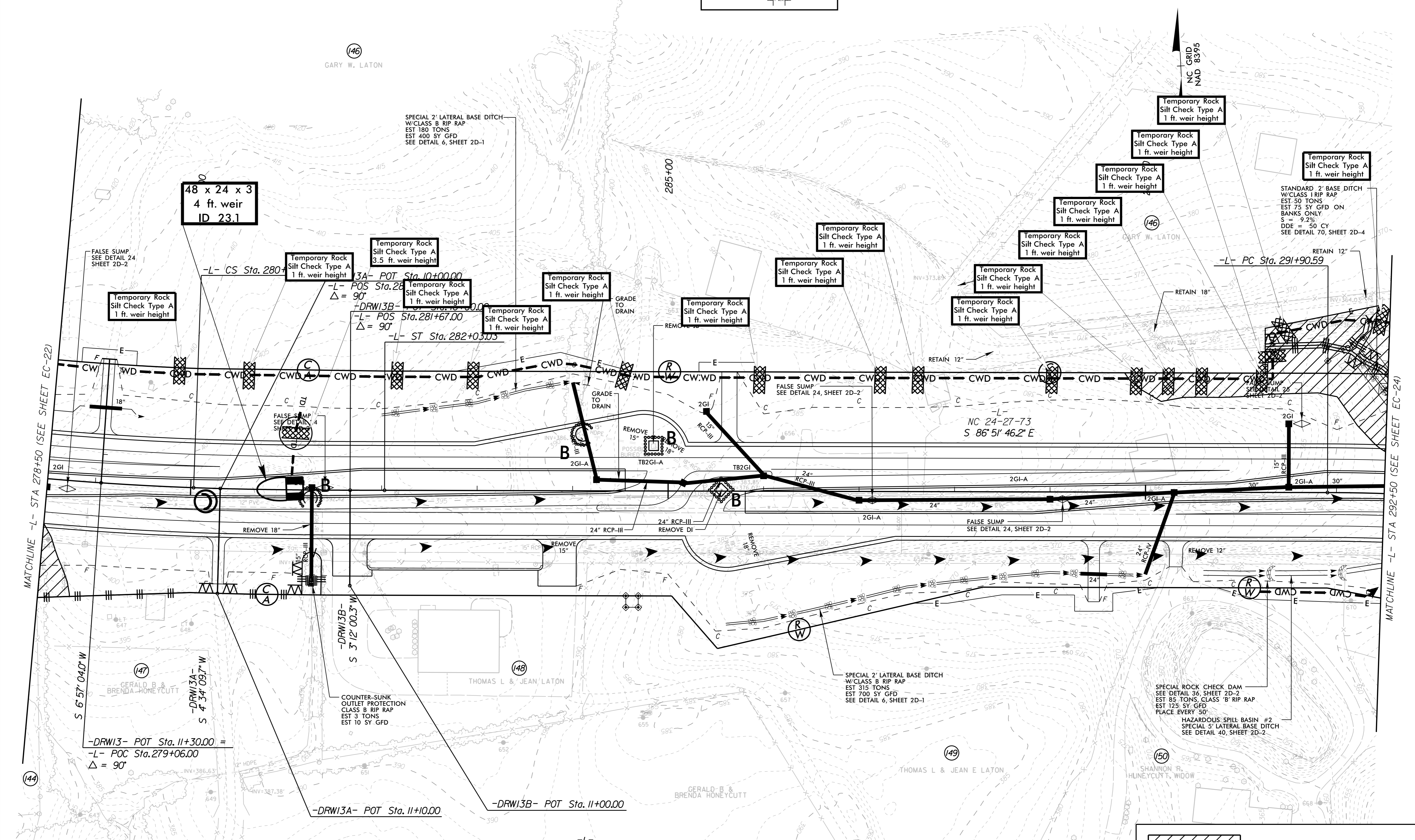
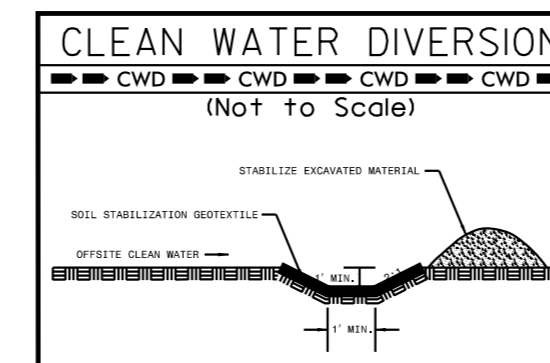


ENVIRONMENTALLY SENSITIVE AREA
 SEE PROJECT SPECIAL PROVISIONS

SEE SHEET 2B-3 FOR INTERSECTION DETAILS
 SEE SHEET 43 FOR -L- PROFILE
 SEE SHEET 53 FOR -Y12- PROFILE
 SEE SHEET 57 FOR -DRW10- & -DRW11- PROFILES
 SEE SHEET 58 FOR -DRW12- & -DRW12A- PROFILES

11/1/2018

NOTE:
PLACE TEMPORARY ROCK SEDIMENT DAMS TYPE - B
AND TEMPORARY ROCK SILT CHECKS TYPE - A AT
DRAINAGE OUTLETS.



MATCHLINE -L- STA 278+50 (SEE SHEET EC-22)

MATCHLINE -L- STA 292+50 (SEE SHEET EC-24)

PI Sta 275+61.79 Δ = 17° 12' 46.2" (LT) D = 1' 56' 08.4" L = 889.25' T = 448.00' R = 2,960.00'	PIs Sta 280+69.71 Θs = 1' 56' 08.4" Ls = 200.00' LT = 133.34' ST = 66.67'	PI Sta 297+61.04 Δ = 32° 41' 31.2" (RT) D = 2' 56' 44.9" L = 1,109.78' T = 570.45' R = 1,945.00'
---	---	---

ENVIRONMENTALLY SENSITIVE AREA
SEE PROJECT SPECIAL PROVISIONS

SEE SHEET 43 FOR -L- PROFILE
SEE SHEET 58 FOR -DRWI3-, -DRWI3A-, & -DRWI3B- PROFILES

5/14/99

11/1/2018