

**This electronic collection of documents is provided  
for the convenience of the user  
and is Not a Certified Document –**

**The documents contained herein were originally issued  
and sealed by the individuals whose names and license  
numbers appear on each page, on the dates appearing  
with their signature on that page.**

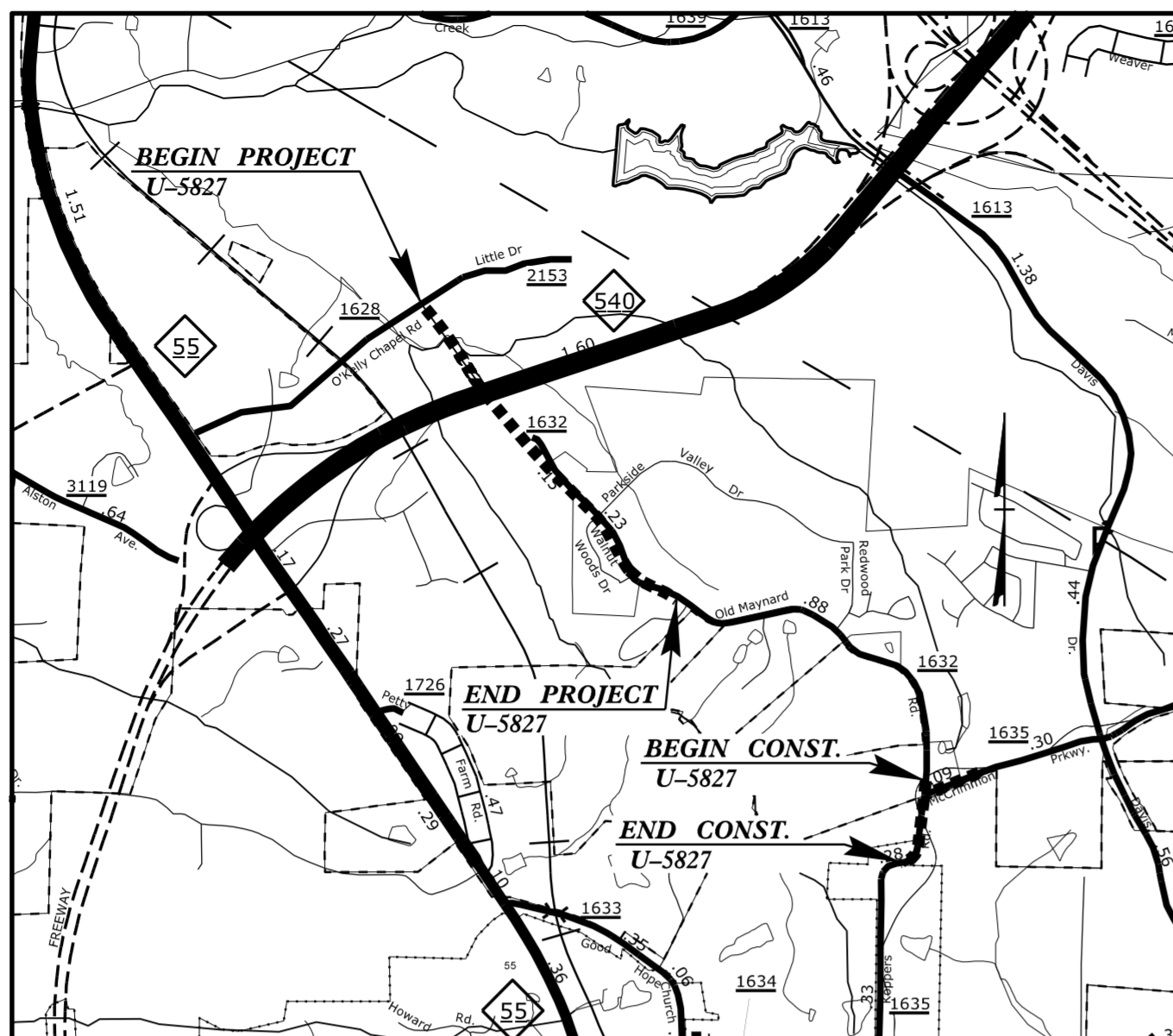
**This file or an individual page  
shall not be considered a certified document.**

TIP PROJECT: U-5827

STATE OF NORTH CAROLINA  
DIVISION OF HIGHWAYS

T.I.P. NO.	SHEET NO.
U-5827	UO-1

NOTE:  
ALL UTILITY WORK SHOWN ON THIS SHEET WILL BE DONE BY OTHERS. NO PAYMENT WILL BE MADE TO THE CONTRACTOR FOR UTILITY WORK SHOWN ON THIS SHEET.

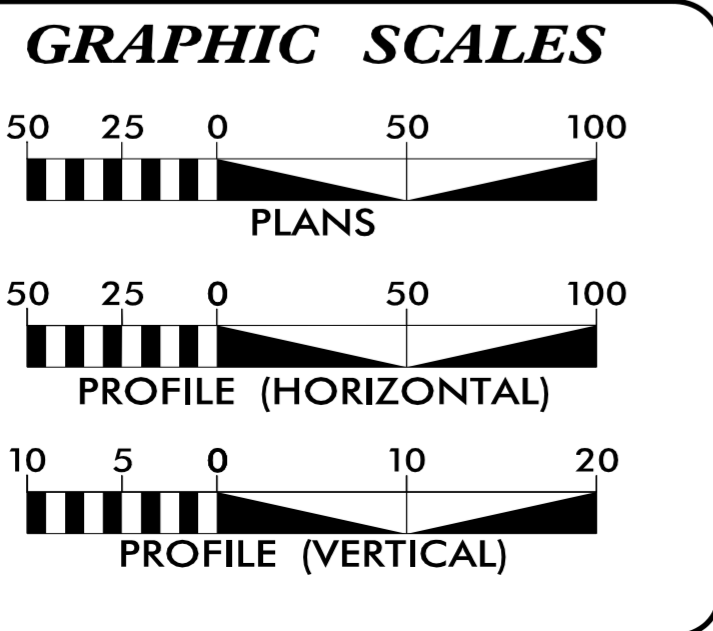
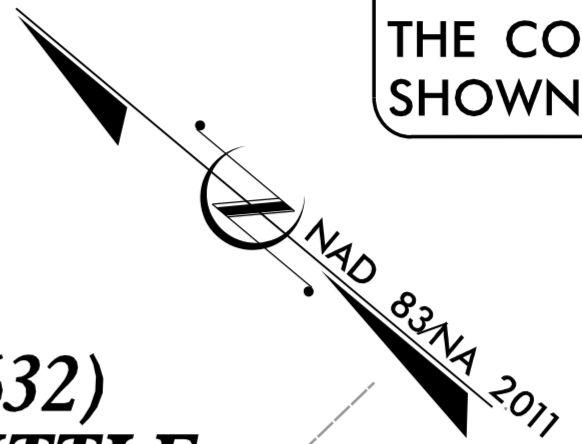
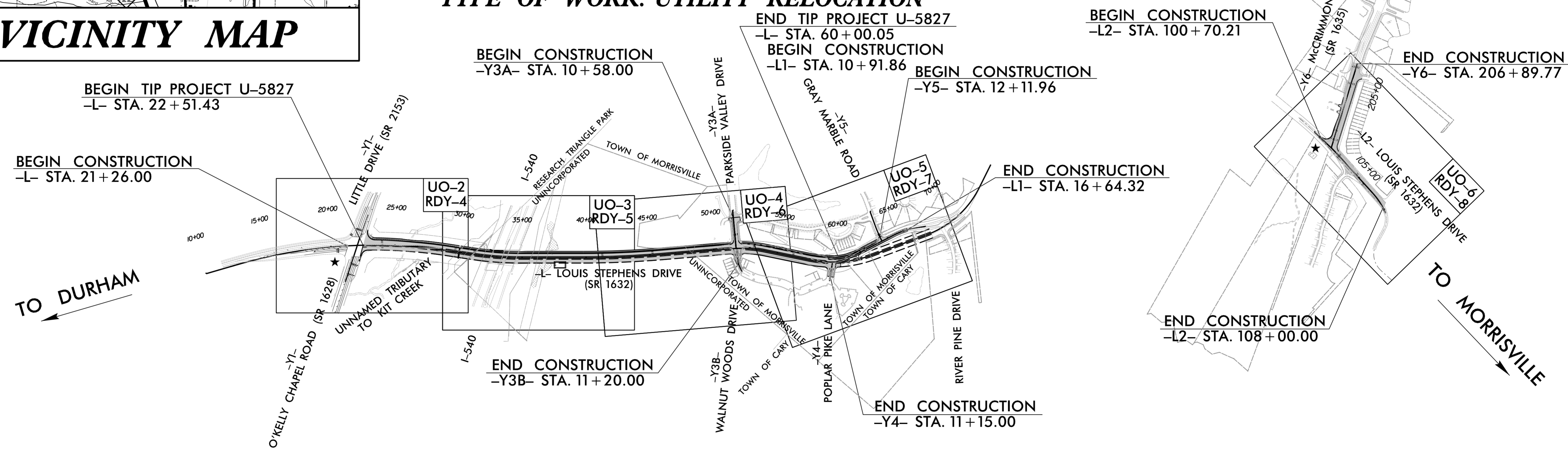


VICINITY MAP

# UTILITIES BY OTHERS PLANS WAKE COUNTY

LOCATION: LOUIS STEPHENS DRIVE EXTENSION (SR 1632)  
FROM O'KELLY CHAPEL ROAD (SR 1628)/LITTLE DRIVE (SR 2153) IN RESEARCH TRIANGLE PARK  
TO POPLAR PIKE LANE IN MORRISVILLE

TYPE OF WORK: UTILITY RELOCATION



**INDEX OF SHEETS**

SHEET NO.:	DESCRIPTION:
UO-1	TITLE SHEET
UO-2 THRU UO-6	UBO PLAN SHEETS

**UTILITY OWNERS WITH CONFLICTS**


- (A) POWER - DUKE ENERGY (DISTRIBUTION)
- (B) GAS - PSNC
- (C) CABLE - CHARTER
- (D) COMMUNICATIONS - GOOGLE FIBER
- (E) COMMUNICATIONS - NCTA
- (F) PHONE - AT&T
- (G) WATER & SEWER - TOWN OF CARY

PREPARED IN THE OFFICE OF:

**CH ENGINEERING**

3220 GLEN ROYAL RD. RALEIGH, NC 27617  
TELE 919.788.0224 FAX 919.788.0232  
NC LICENSE #P-0189

**UTILITIES PROJECT ENGINEER**  
Mary Jo Lee, P.E.



**DIVISION OF HIGHWAYS  
DIVISION 5**

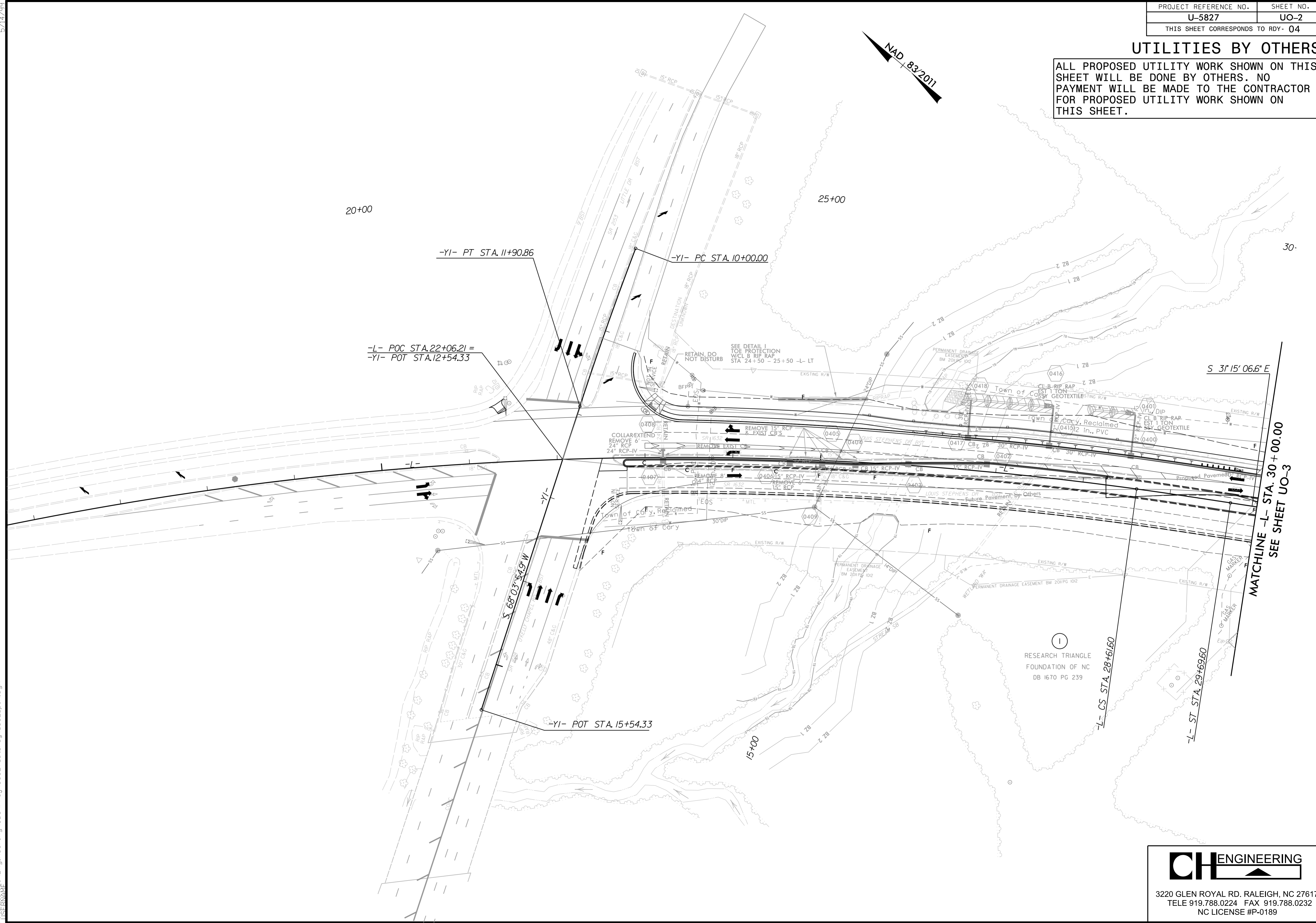
PROJECT DELIVERY UNIT  
2612 N. DUKE STREET  
DURHAM, 27704  
P: 919-220-4600  
F: 919-560-3371

Ben Upshaw, PE	TEAM LEAD
S. Reid Davidson	DDC ENGINEER
Donald Proper	DIVISION 5 UTILITIES ENGINEER
Monroe Brown	UTILITY COORDINATOR

### UTILITIES BY OTHERS

ALL PROPOSED UTILITY WORK SHOWN ON THIS SHEET WILL BE DONE BY OTHERS. NO PAYMENT WILL BE MADE TO THE CONTRACTOR FOR PROPOSED UTILITY WORK SHOWN ON THIS SHEET.

5/14/99



MATCHLINE -L- STA. 30 + 00.00  
SEE SHEET UO-3

-L- ST STA. 29+69.60

-L- CS STA. 28+61.60

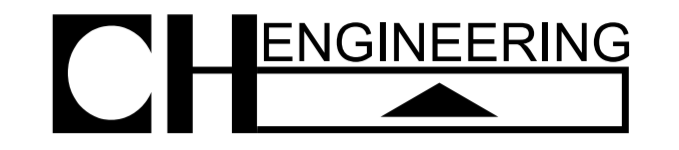
RESEARCH TRIANGLE  
FOUNDATION OF NC  
DB 1670 PG 239



4/16/2019  
 P:\Projects\Engineering\UBD\Proje\U5827-ut.rdy4\_U02\_psh.dgn

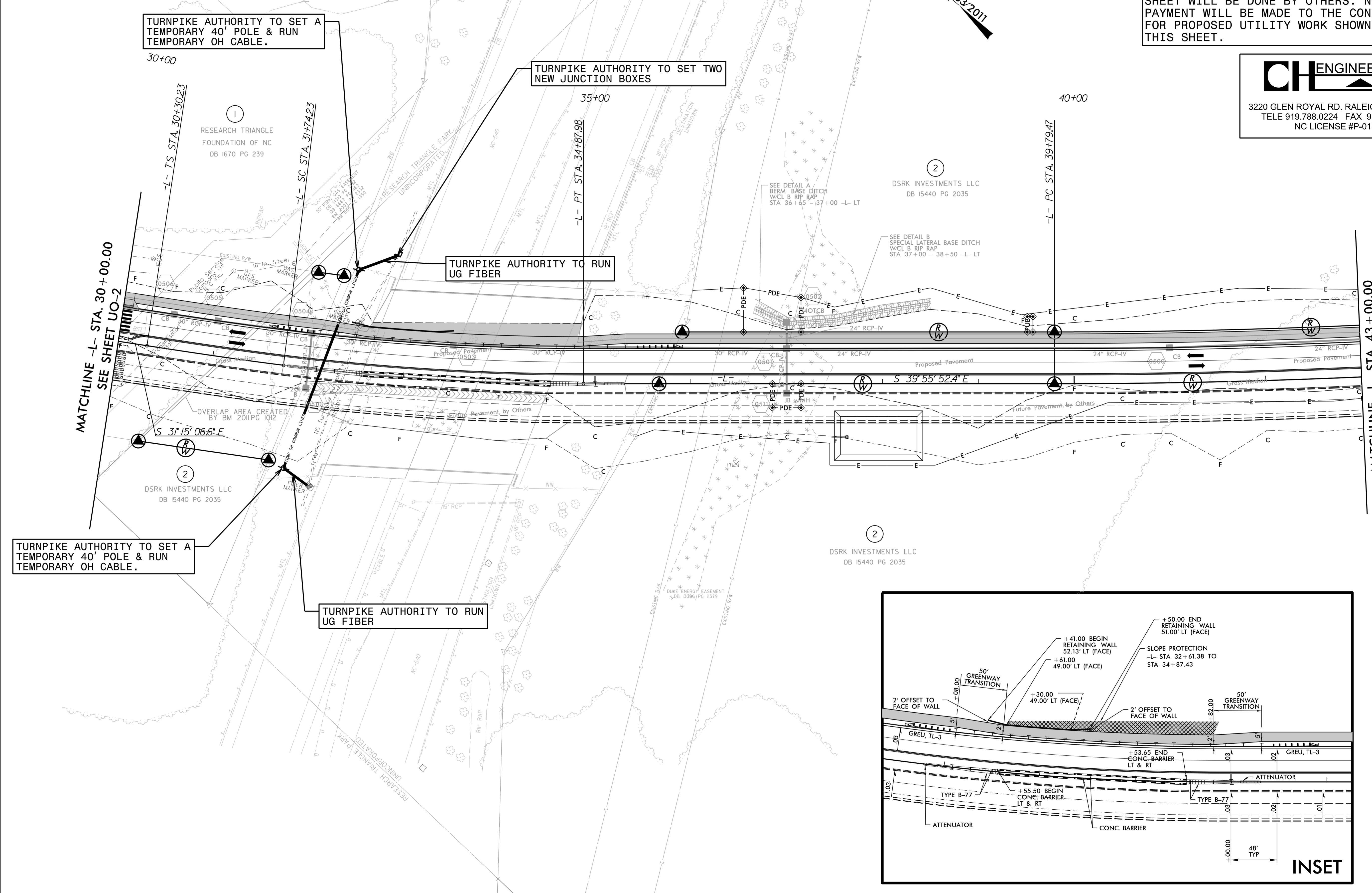
### UTILITIES BY OTHERS

ALL PROPOSED UTILITY WORK SHOWN ON THIS SHEET WILL BE DONE BY OTHERS. NO PAYMENT WILL BE MADE TO THE CONTRACTOR FOR PROPOSED UTILITY WORK SHOWN ON THIS SHEET.



3220 GLEN ROYAL RD. RALEIGH, NC 27617  
 TELE 919.788.0224 FAX 919.788.0232  
 NC LICENSE #P-0189

5/14/99



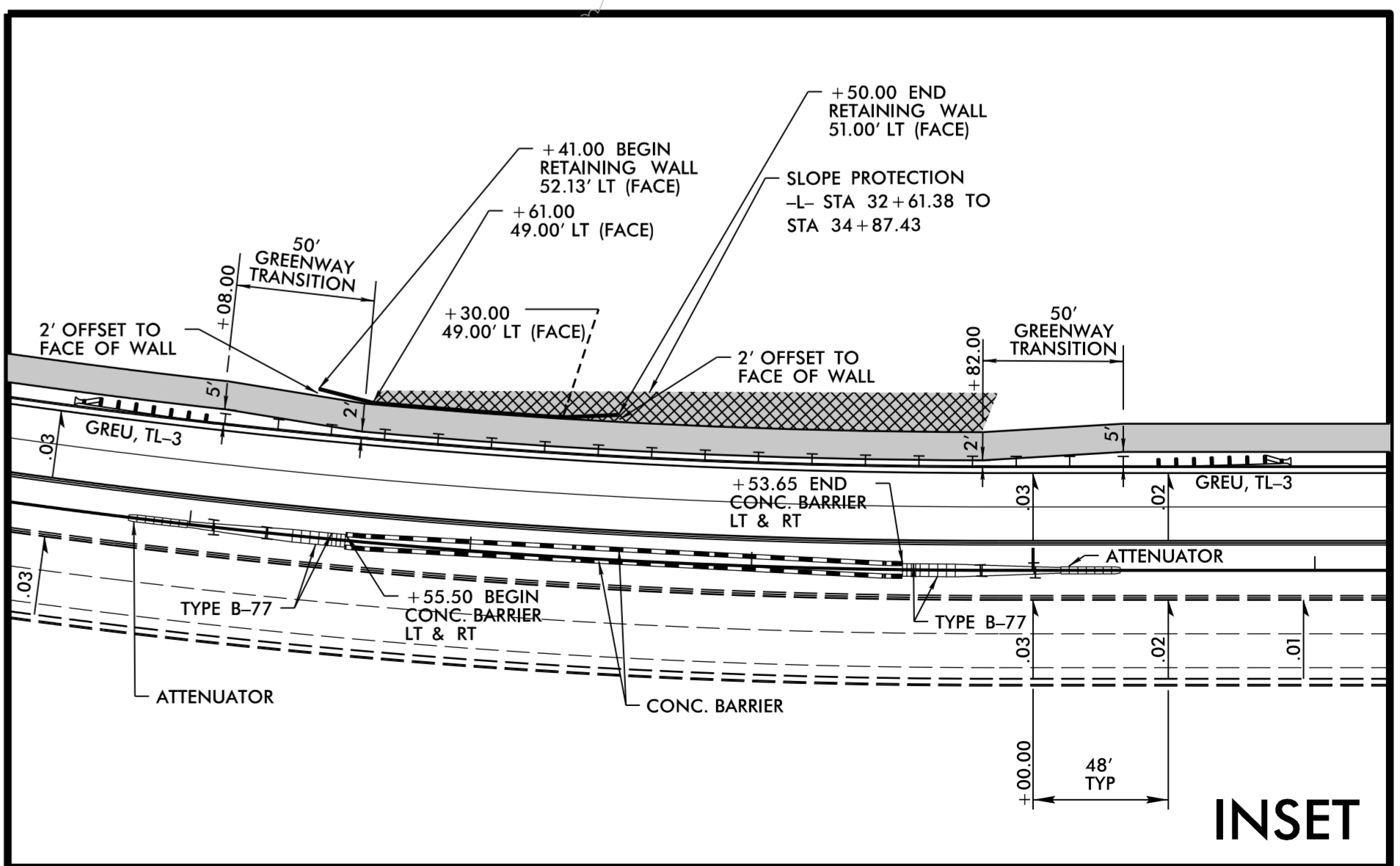
TURNPIKE AUTHORITY TO SET A TEMPORARY 40' POLE & RUN TEMPORARY OH CABLE.

TURNPIKE AUTHORITY TO SET TWO NEW JUNCTION BOXES

TURNPIKE AUTHORITY TO RUN UG FIBER

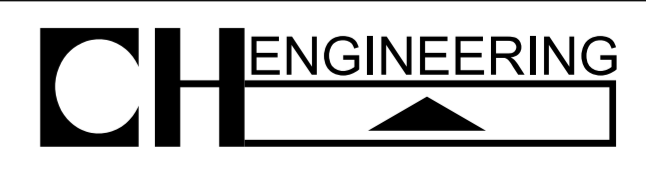
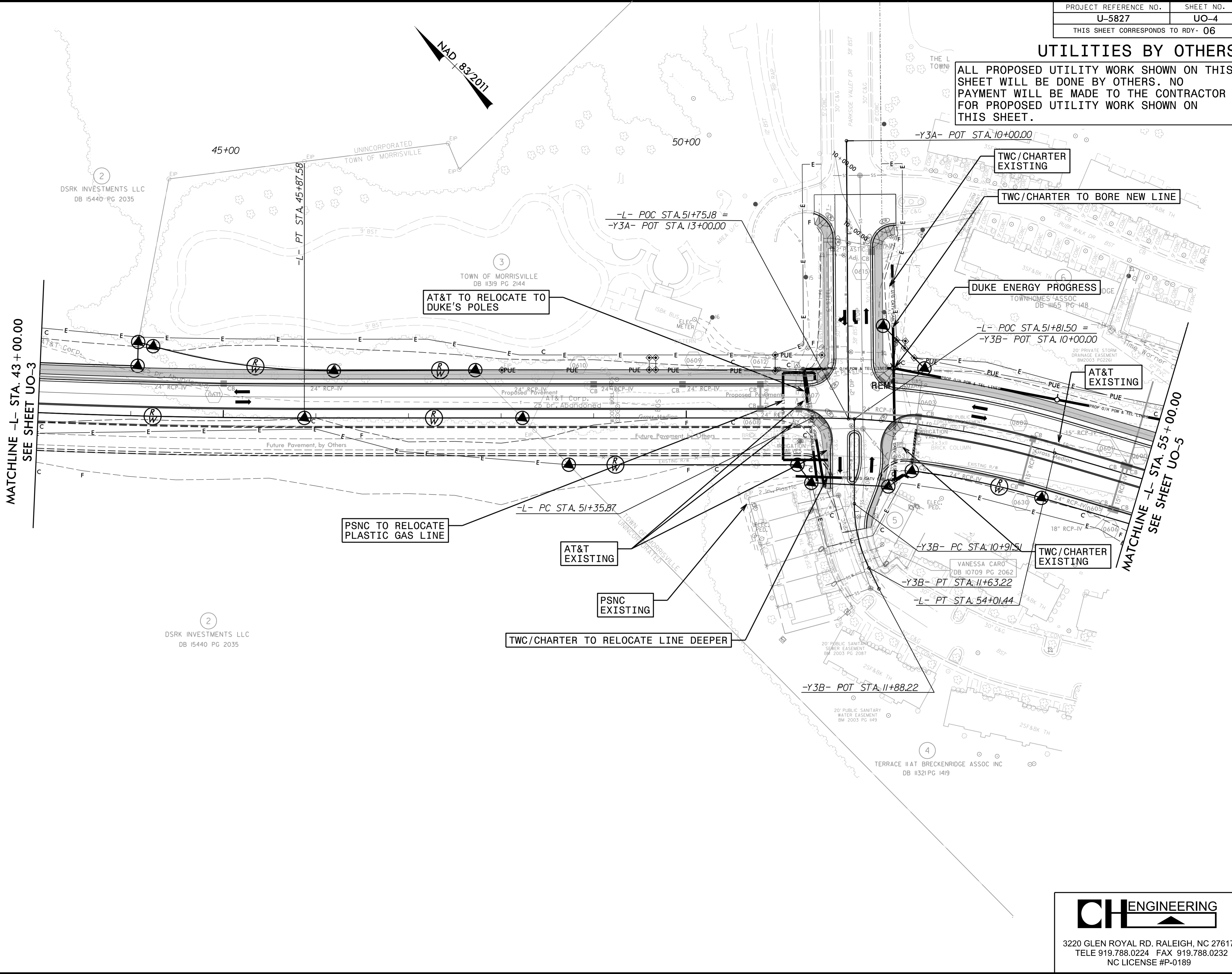
TURNPIKE AUTHORITY TO SET A TEMPORARY 40' POLE & RUN TEMPORARY OH CABLE.

TURNPIKE AUTHORITY TO RUN UG FIBER



### UTILITIES BY OTHERS

ALL PROPOSED UTILITY WORK SHOWN ON THIS SHEET WILL BE DONE BY OTHERS. NO PAYMENT WILL BE MADE TO THE CONTRACTOR FOR PROPOSED UTILITY WORK SHOWN ON THIS SHEET.



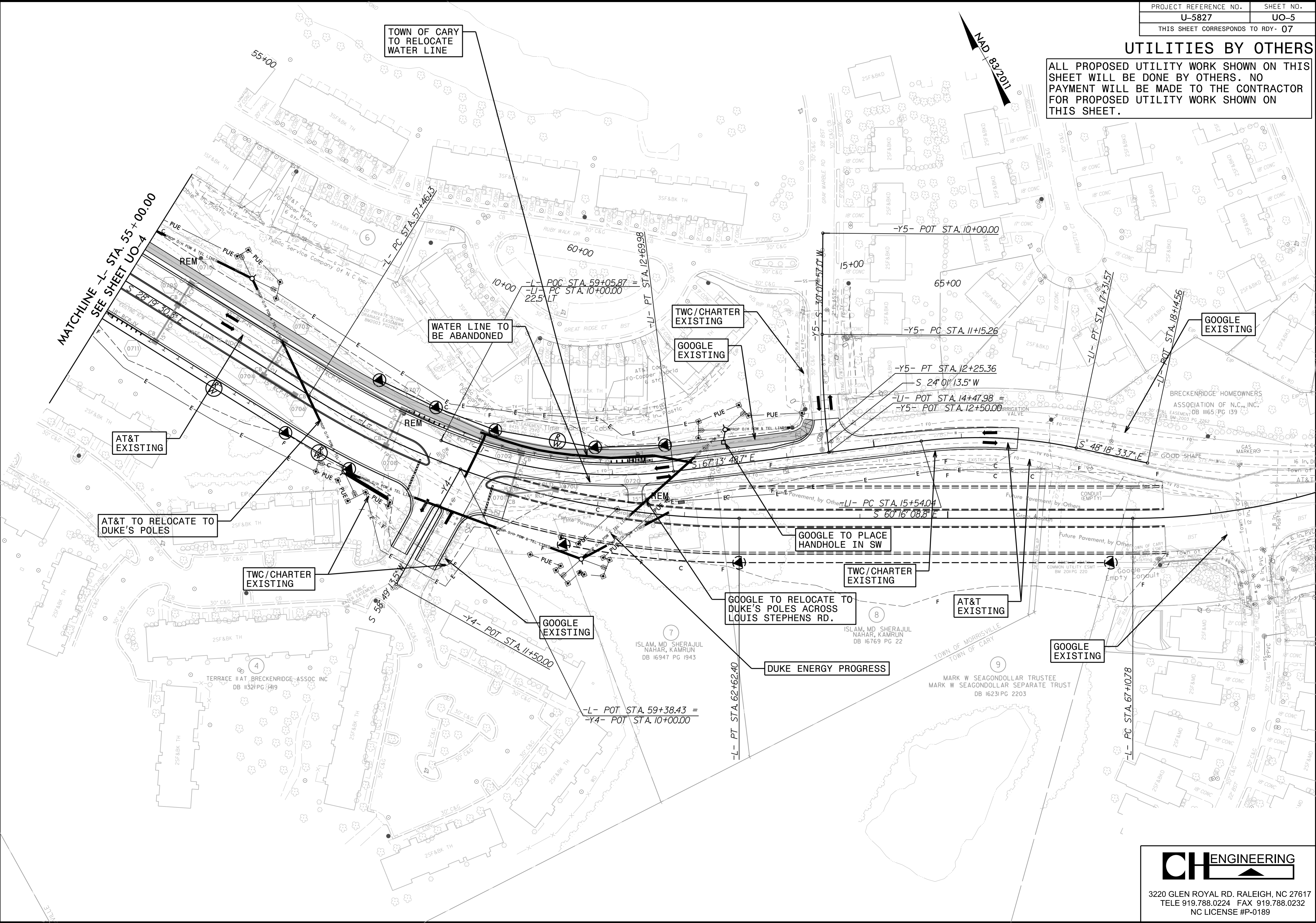
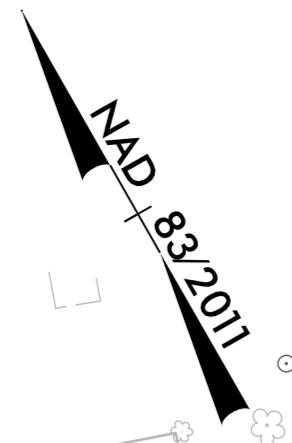
3220 GLEN ROYAL RD. RALEIGH, NC 27617  
 TELE 919.788.0224 FAX 919.788.0232  
 NC LICENSE #P-0189

5/14/19  
 C:\Users\psh\OneDrive\Documents\Projects\U5827\U5827-ut-rdy6-U04\_psh.dgn

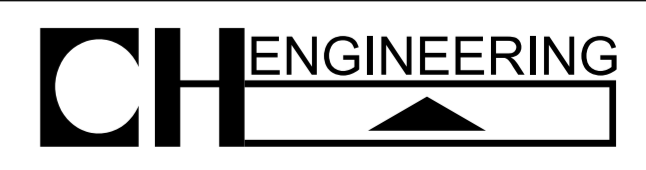
### UTILITIES BY OTHERS

ALL PROPOSED UTILITY WORK SHOWN ON THIS SHEET WILL BE DONE BY OTHERS. NO PAYMENT WILL BE MADE TO THE CONTRACTOR FOR PROPOSED UTILITY WORK SHOWN ON THIS SHEET.

5/14/99



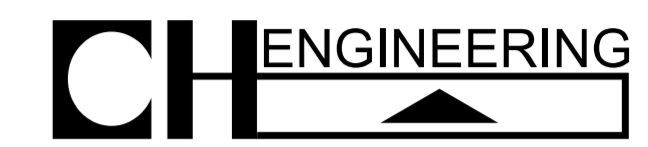
4/17/2019  
 P:\S\Projects\Engineering\UBD\Pro\U5827-ut.rdy7\_U05\_psh.dgn



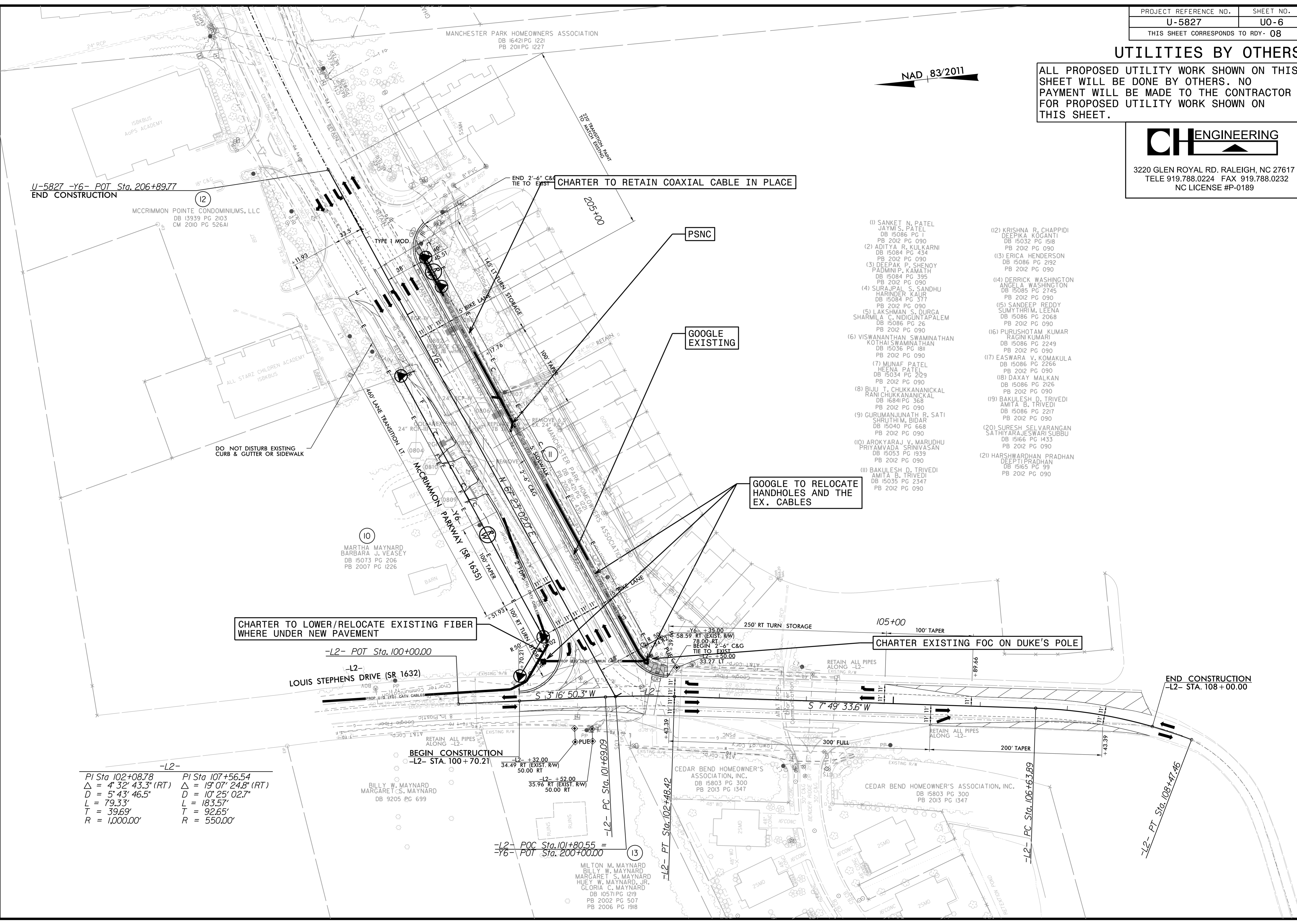
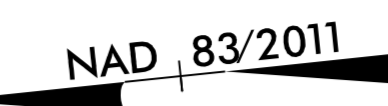
3220 GLEN ROYAL RD. RALEIGH, NC 27617  
 TELE 919.788.0224 FAX 919.788.0232  
 NC LICENSE #P-0189

**UTILITIES BY OTHERS**

ALL PROPOSED UTILITY WORK SHOWN ON THIS SHEET WILL BE DONE BY OTHERS. NO PAYMENT WILL BE MADE TO THE CONTRACTOR FOR PROPOSED UTILITY WORK SHOWN ON THIS SHEET.



3220 GLEN ROYAL RD. RALEIGH, NC 27617  
 TELE 919.788.0224 FAX 919.788.0232  
 NC LICENSE #P-0189



- (1) SANKET N. PATEL  
JAYMIS. PATEL  
DB 15086 PG 1  
PB 2012 PG 090
- (2) ADITYA R. KULKARNI  
DB 15084 PG 434  
PB 2012 PG 090
- (3) DEEPAK P. SHENOY  
PADMINI P. KAMATH  
DB 15084 PG 395  
PB 2012 PG 090
- (4) SURAJPAL S. SANDHU  
HARINDER KAUR  
DB 15084 PG 377  
PB 2012 PG 090
- (5) LAKSHMAN S. DURGA  
SHARMILA C. NIDIGUNTAPALEM  
DB 15086 PG 26  
PB 2012 PG 090
- (6) VISWANATHAN SWAMINATHAN  
KOTHAI SWAMINATHAN  
DB 15036 PG 181  
PB 2012 PG 090
- (7) MUNAF PATEL  
HEENA PATEL  
DB 15034 PG 2129  
PB 2012 PG 090
- (8) BIJU T. CHUKKANANICKAL  
RANI CHUKKANANICKAL  
DB 16841 PG 368  
PB 2012 PG 090
- (9) GURUMANJUNATH R. SATI  
SHRUTHI M. BIDAR  
DB 15040 PG 668  
PB 2012 PG 090
- (10) AROKYARAJ V. MARUDHU  
PRIYAMVADA SRINIVASAN  
DB 15053 PG 1939  
PB 2012 PG 090
- (11) BAKULESH D. TRIVEDI  
AMITA B. TRIVEDI  
DB 15035 PG 2347  
PB 2012 PG 090
- (12) KRISHNA R. CHAPPIDI  
DEEPIKA KOGANTI  
DB 15032 PG 1518  
PB 2012 PG 090
- (13) ERICA HENDERSON  
DB 15086 PG 2192  
PB 2012 PG 090
- (14) DERRICK WASHINGTON  
ANGELA WASHINGTON  
DB 15085 PG 2745  
PB 2012 PG 090
- (15) SANDEEP REDDY  
SUNYATHRI M. LEENA  
DB 15086 PG 2068  
PB 2012 PG 090
- (16) PURUSHOTAM KUMAR  
RAGINI KUMARI  
DB 15086 PG 2249  
PB 2012 PG 090
- (17) EASWARA V. KOMAKULA  
DB 15086 PG 2256  
PB 2012 PG 090
- (18) DAXAY MALKAN  
DB 15086 PG 2126  
PB 2012 PG 090
- (19) BAKULESH D. TRIVEDI  
AMITA B. TRIVEDI  
DB 15086 PG 2217  
PB 2012 PG 090
- (20) SURESH SELVARANGAN  
SATHIYARAJESWARI SUBBU  
DB 15166 PG 1433  
PB 2012 PG 090
- (21) HARSHWARDHAN PRADHAN  
DEEPIKA PRADHAN  
DB 15165 PG 99  
PB 2012 PG 090

-L2-

PI Sta 102+08.78	PI Sta 107+56.54
$\Delta = 4' 32'' 43.3''$ (RT)	$\Delta = 19' 07'' 24.8''$ (RT)
$D = 5' 43'' 46.5''$	$D = 10' 25'' 02.7''$
$L = 79.33'$	$L = 183.57'$
$T = 39.69'$	$T = 92.65'$
$R = 1,000.00'$	$R = 550.00'$

5/14/09 P:\Projects\Engineering\UBD\Proje\U5827-ut.rdy8\_U06\_psh.dgn