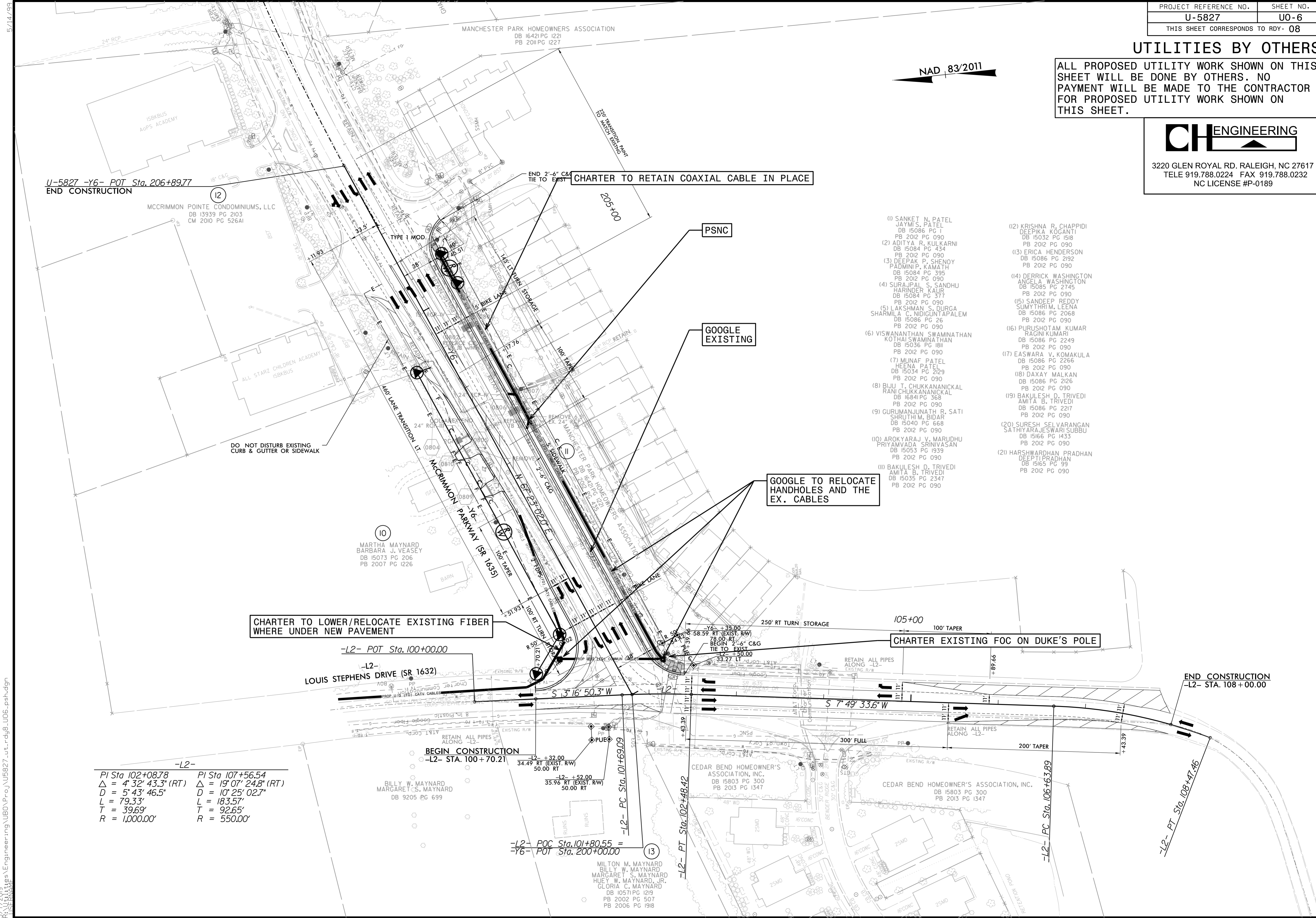
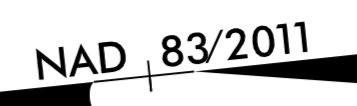


UTILITIES BY OTHERS

ALL PROPOSED UTILITY WORK SHOWN ON THIS SHEET WILL BE DONE BY OTHERS. NO PAYMENT WILL BE MADE TO THE CONTRACTOR FOR PROPOSED UTILITY WORK SHOWN ON THIS SHEET.

CH ENGINEERING
 3220 GLEN ROYAL RD. RALEIGH, NC 27617
 TELE 919.788.0224 FAX 919.788.0232
 NC LICENSE #P-0189



- (1) SANKET N. PATEL
JAYMIS. PATEL
DB 15086 PG 1
PB 2012 PG 090
- (2) ADITYA R. KULKARNI
DB 15084 PG 434
PB 2012 PG 090
- (3) DEEPAK P. SHENOY
PADMINI P. KAMATH
DB 15084 PG 395
PB 2012 PG 090
- (4) SURAJPAL S. SANDHU
HARINDER KAUR
DB 15084 PG 377
PB 2012 PG 090
- (5) LAKSHMAN S. DURGA
SHARMILA C. NIDIGUNTAPALEM
DB 15086 PG 26
PB 2012 PG 090
- (6) VISWANATHAN SWAMINATHAN
KOTHAI SWAMINATHAN
DB 15036 PG 181
PB 2012 PG 090
- (7) MUNAF PATEL
HEENA PATEL
DB 15034 PG 2129
PB 2012 PG 090
- (8) BIJU T. CHUKKANANICKAL
RANI CHUKKANANICKAL
DB 15041 PG 368
PB 2012 PG 090
- (9) GURUMANJUNATH R. SATI
SHRUTHI M. BIDAR
DB 15040 PG 668
PB 2012 PG 090
- (10) AROKYARAJ V. MARUDHU
PRIYAMVADA SRINIVASAN
DB 15053 PG 1939
PB 2012 PG 090
- (11) BAKULESH D. TRIVEDI
AMITA B. TRIVEDI
DB 15035 PG 2347
PB 2012 PG 090
- (12) KRISHNA R. CHAPPIDI
DEEPIKA KOGANTI
DB 15032 PG 1518
PB 2012 PG 090
- (13) ERICA HENDERSON
DB 15086 PG 2192
PB 2012 PG 090
- (14) DERRICK WASHINGTON
ANGELA WASHINGTON
DB 15085 PG 2745
PB 2012 PG 090
- (15) SANDEEP REDDY
SUNYATHRI M. LEENA
DB 15086 PG 2068
PB 2012 PG 090
- (16) PURUSHOTAM KUMAR
RAGINI KUMARI
DB 15086 PG 2249
PB 2012 PG 090
- (17) EASWARA V. KOMAKULA
DB 15086 PG 2256
PB 2012 PG 090
- (18) DAXAY MALKAN
DB 15086 PG 2126
PB 2012 PG 090
- (19) BAKULESH D. TRIVEDI
AMITA B. TRIVEDI
DB 15086 PG 2217
PB 2012 PG 090
- (20) SURESH SELVARANGAN
SATHIYARAJESWARI SUBBU
DB 15166 PG 1433
PB 2012 PG 090
- (21) HARSHWARDHAN PRADHAN
DEEPIKA PRADHAN
DB 15165 PG 99
PB 2012 PG 090

-L2-

PI Sta 102+08.78	PI Sta 107+56.54
Δ = 4° 32' 43.3" (RT)	Δ = 19° 07' 24.8" (RT)
D = 5' 43" 46.5"	D = 10' 25" 02.7"
L = 79.33'	L = 183.57'
T = 39.69'	T = 92.65'
R = 1,000.00'	R = 550.00'

5/14/09 P:\Projects\Engineering\UBD\Proje\U5827-ut.rdy8_U06_psh.dgn