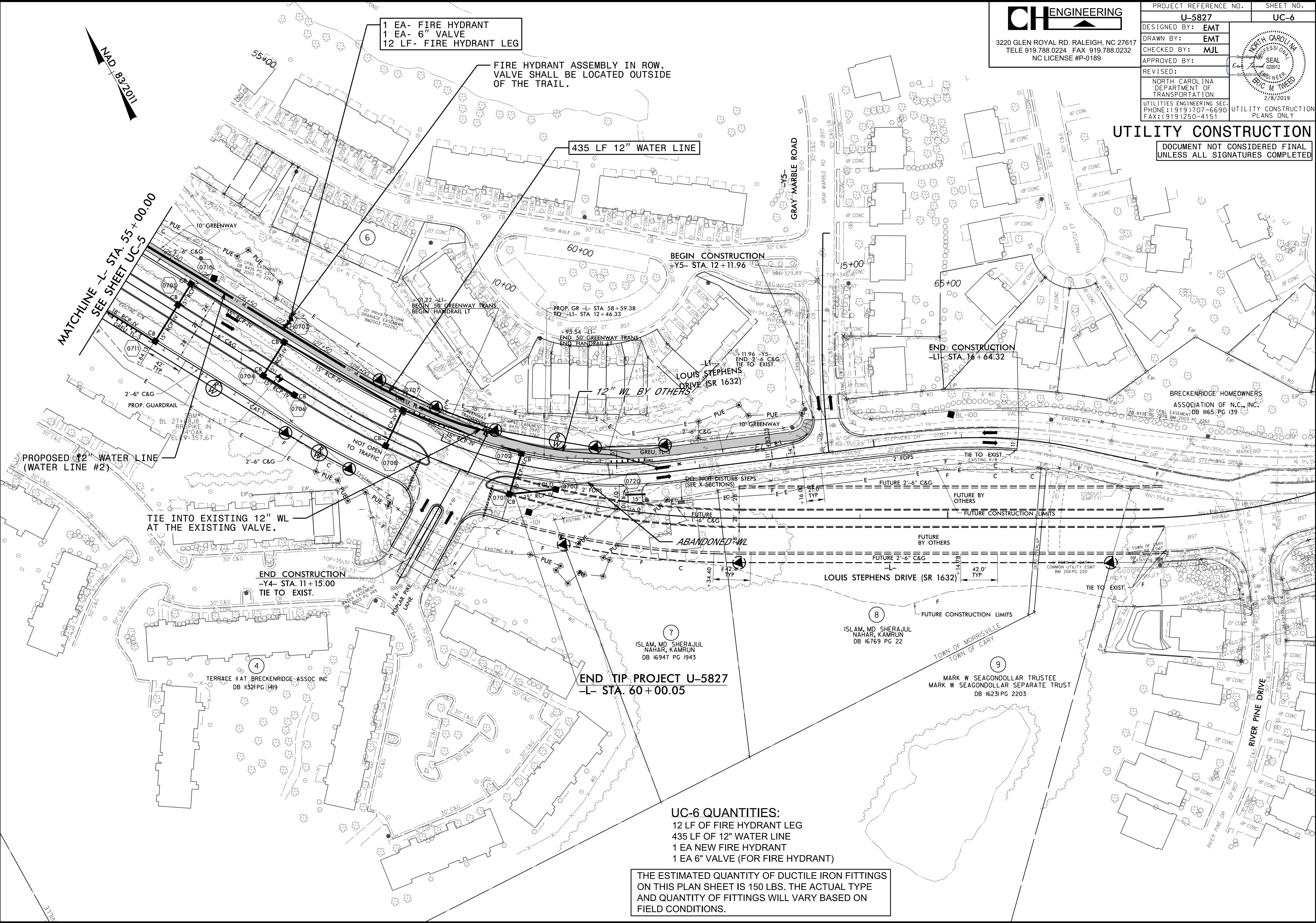
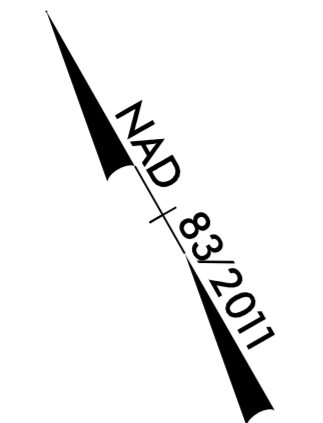


### UTILITY CONSTRUCTION

DOCUMENT NOT CONSIDERED FINAL  
UNLESS ALL SIGNATURES COMPLETED



1 EA- FIRE HYDRANT  
 1 EA- 6" VALVE  
 12 LF- FIRE HYDRANT LEG

FIRE HYDRANT ASSEMBLY IN ROW.  
 VALVE SHALL BE LOCATED OUTSIDE  
 OF THE TRAIL.

435 LF 12" WATER LINE

MATCHLINE -L- STA. 55+00.00  
 SEE SHEET UC-5

BEGIN CONSTRUCTION  
 -Y5- STA. 12+11.96

END CONSTRUCTION  
 -L1- STA. 16+64.32

PROPOSED 12" WATER LINE  
 (WATER LINE #2)

TIE INTO EXISTING 12" WL  
 AT THE EXISTING VALVE.

END CONSTRUCTION  
 -Y4- STA. 11+15.00  
 TIE TO EXIST.

END TIP PROJECT U-5827  
 -L- STA. 60+00.05

**UC-6 QUANTITIES:**  
 12 LF OF FIRE HYDRANT LEG  
 435 LF OF 12" WATER LINE  
 1 EA NEW FIRE HYDRANT  
 1 EA 6" VALVE (FOR FIRE HYDRANT)

THE ESTIMATED QUANTITY OF DUCTILE IRON FITTINGS  
 ON THIS PLAN SHEET IS 150 LBS. THE ACTUAL TYPE  
 AND QUANTITY OF FITTINGS WILL VARY BASED ON  
 FIELD CONDITIONS.