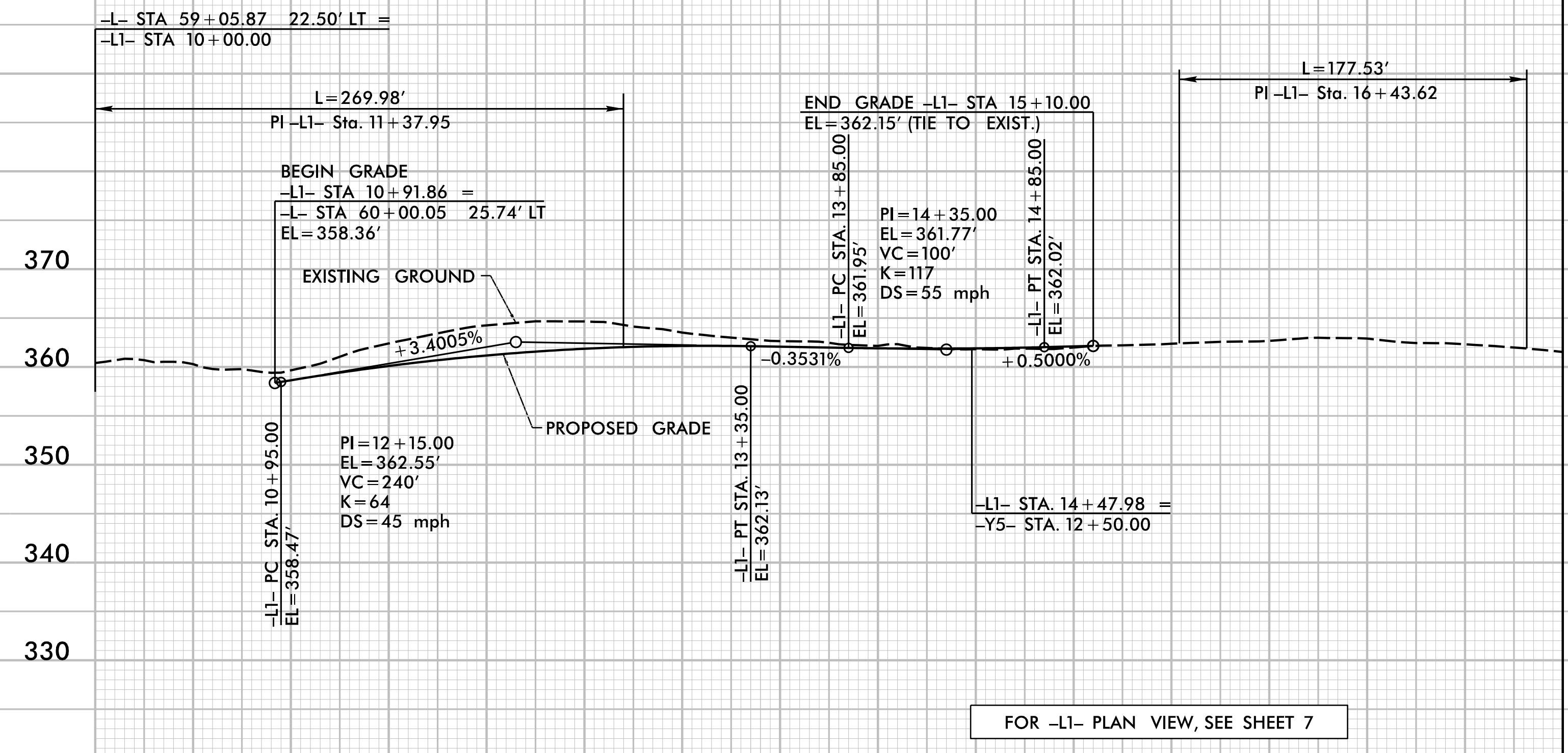


5/14/19

-L1-

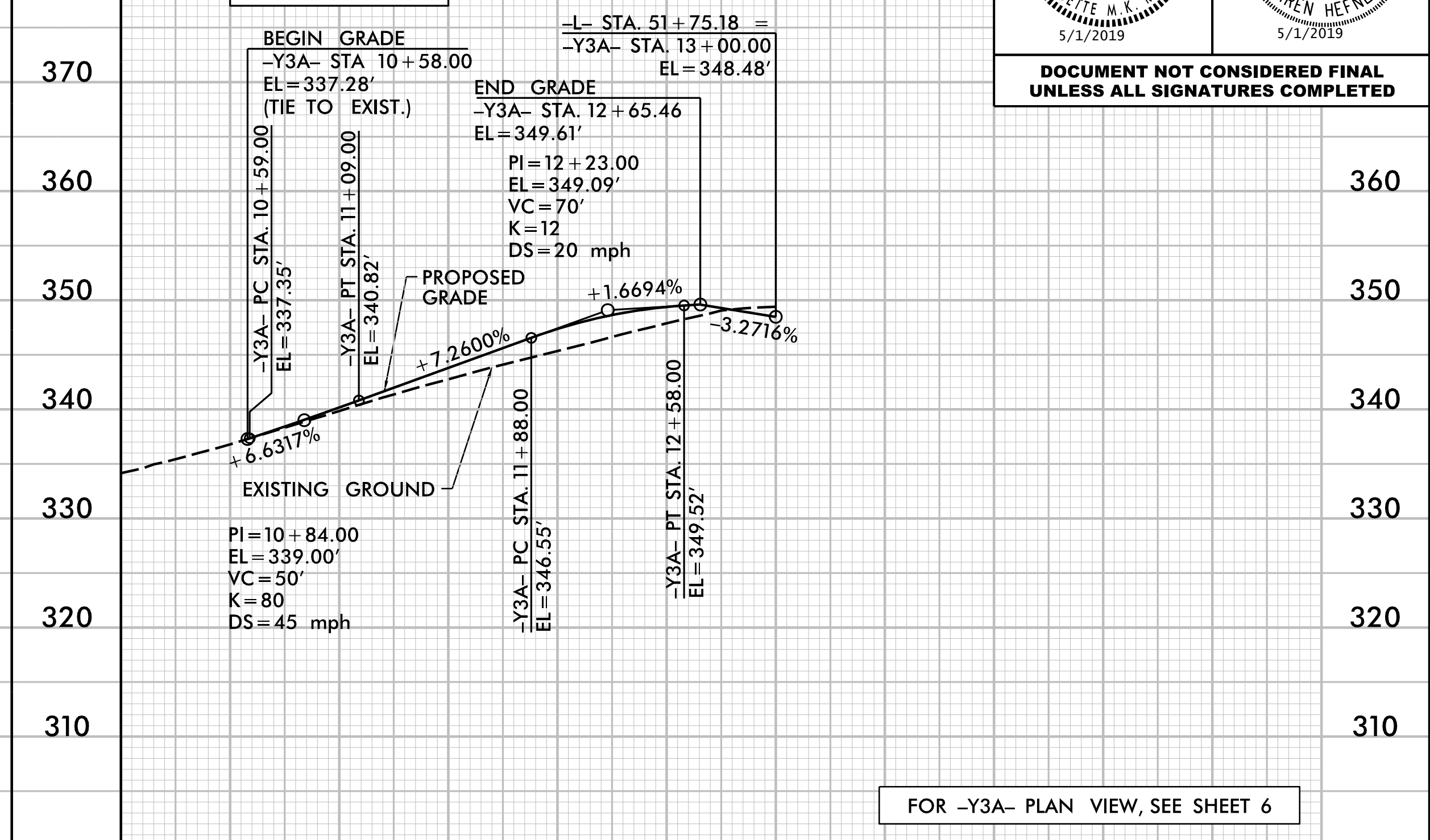
SR 1632 (LOUIS STEPHENS DR)



FOR -L1- PLAN VIEW, SEE SHEET 7

-Y3A-

PARKSIDE VALLEY DR



FOR -Y3A- PLAN VIEW, SEE SHEET 6

RAMEY KEMP ASSOCIATES, INC.
 Transportation Engineers
 5808 Faringdon Place, Suite 100
 Raleigh, North Carolina 27609
 Phone: 919-872-5115
 www.rameykemp.com
 NC License No. C-0910

PROJECT REFERENCE NO. U-5827	SHEET NO. 11
ROADWAY DESIGN ENGINEER <i>[Signature]</i>	HYDRAULICS ENGINEER <i>[Signature]</i>
Professional Engineer Seal M. K. ROBLE 17306 5/1/2019	Professional Engineer Seal KAREN HEPNER 3025 5/1/2019

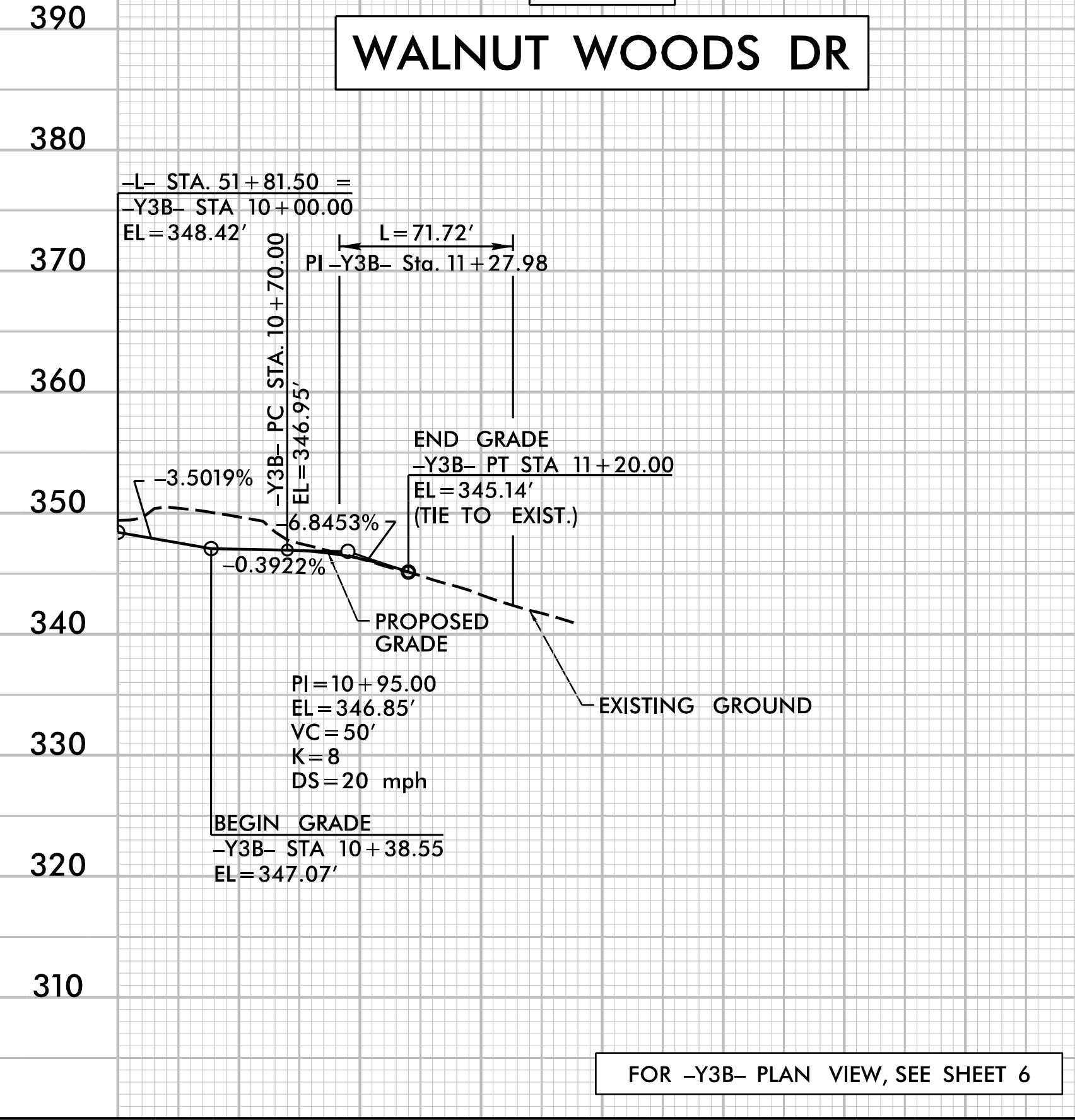
DOCUMENT NOT CONSIDERED FINAL UNLESS ALL SIGNATURES COMPLETED

10+00 11+00 12+00 13+00 14+00 15+00 16+00 17+00

10+00 11+00 12+00 13+00

-Y3B-

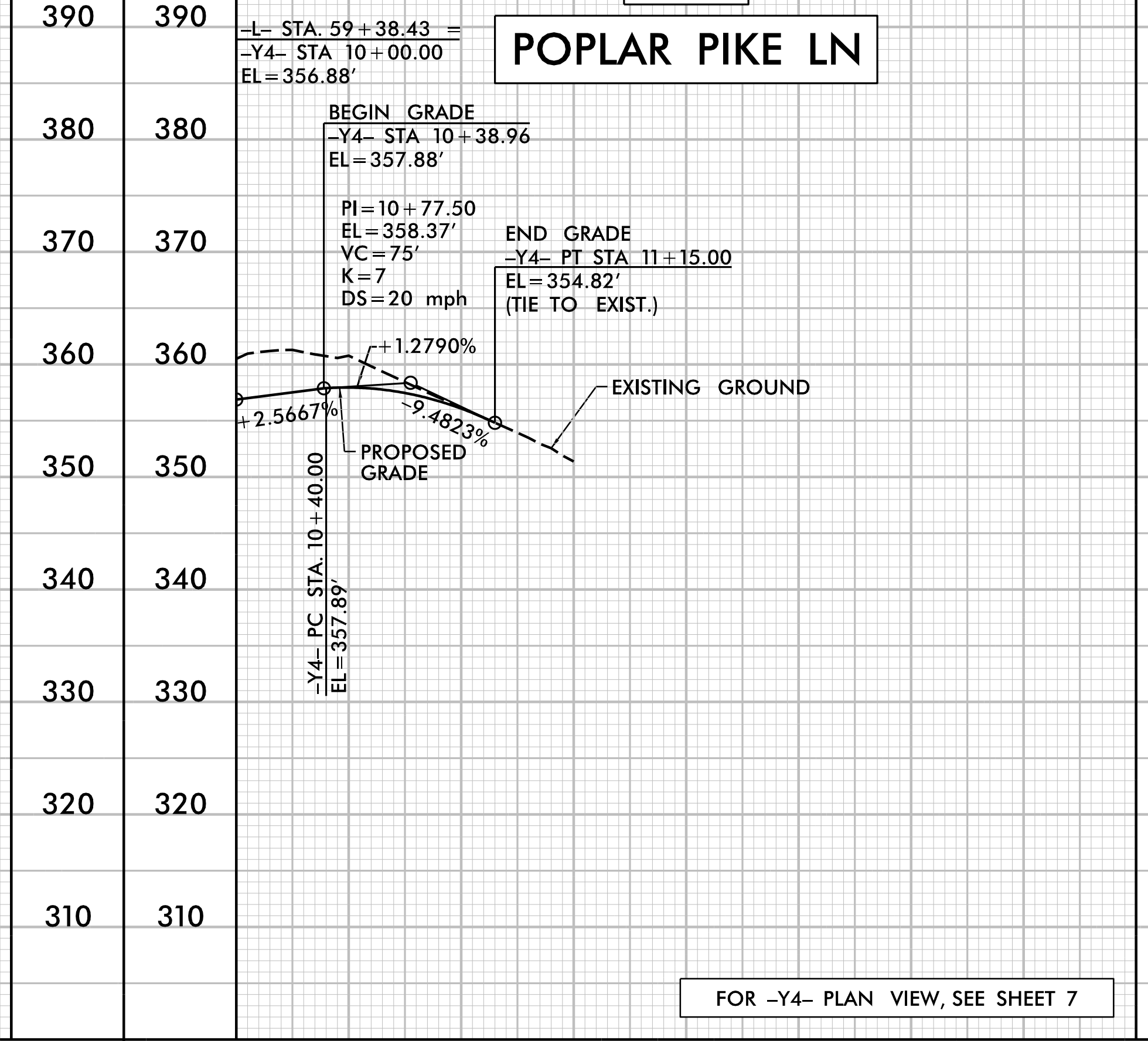
WALNUT WOODS DR



FOR -Y3B- PLAN VIEW, SEE SHEET 6

-Y4-

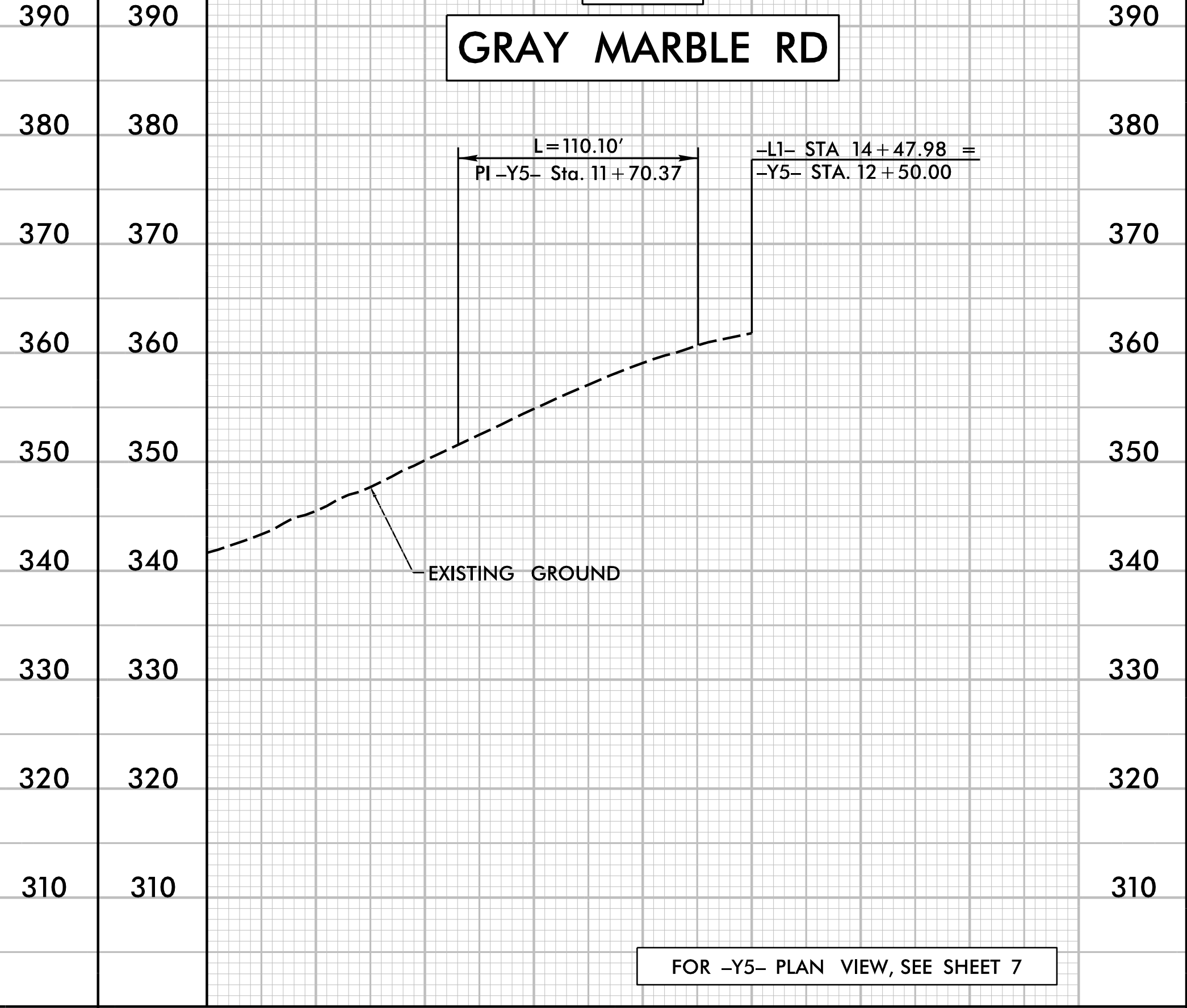
POPLAR PIKE LN



FOR -Y4- PLAN VIEW, SEE SHEET 7

-Y5-

GRAY MARBLE RD



FOR -Y5- PLAN VIEW, SEE SHEET 7

10+00 11+00

10+00 11+00

10+00 11+00 12+00

5/14/2019 U5827_Rdw_of111.dgn